

After a lengthy process, Georgia State University has a new science building. The new facility provides research laboratories as well as regular laboratories and support spaces for the biology, chemistry, and physics and astronomy departments.

When the plans were first drawn, the university lacked the funds to build the facility it desired. After many revisions and discussions, the Board of Regents allotted \$22.7 million to cover all costs, including architects, contractors, and any equipment needed. After paying the architects and submitting the plans to the contractors, payment to the contractors was \$20.2 million. Funds set aside for equipment were used to help complete the building's basic structure. Private donations were made by such organizations as the Woodruff Foundation, the Calloway Foundation, and the Georgia Research Alliance in order to complete construction.

Even with the private donations, there was still no money for equipment. The laboratories were equipped with built-in structures, such as work benches and sinks; however, there were no funds for necessities such as stools for students to sit on or refrigerators and centrifuges needed for experiments.

In spite of financial difficulties, professors remained enthusiastic about the new facility. Due to its age and construction, it was difficult to use Kell Hall for scientific purposes. Such apparatuses as fume hoods, for example, were difficult to set up. Architectural designs in the new building were easy to access as well as flexible.

This led to the question of what to do with Kell Hall. Relocating the three main science departments left excess space in Kell Hall. Discussions focused around the possibilities of renovation, as well as expanding other departments such as Geology, Anthropology, Psychology, and Health Sciences.

Completion date for the science building had been set for March 1993. The first classes are scheduled to occupy the building in the Fall quarter of the same year.<sup>x</sup>

Margaret Rutherford

# We Still Need Mo' Money



The organic chemistry lab appears ready for students but it is still in need of equipment.

Anthony Banks



# SOPHOMORE



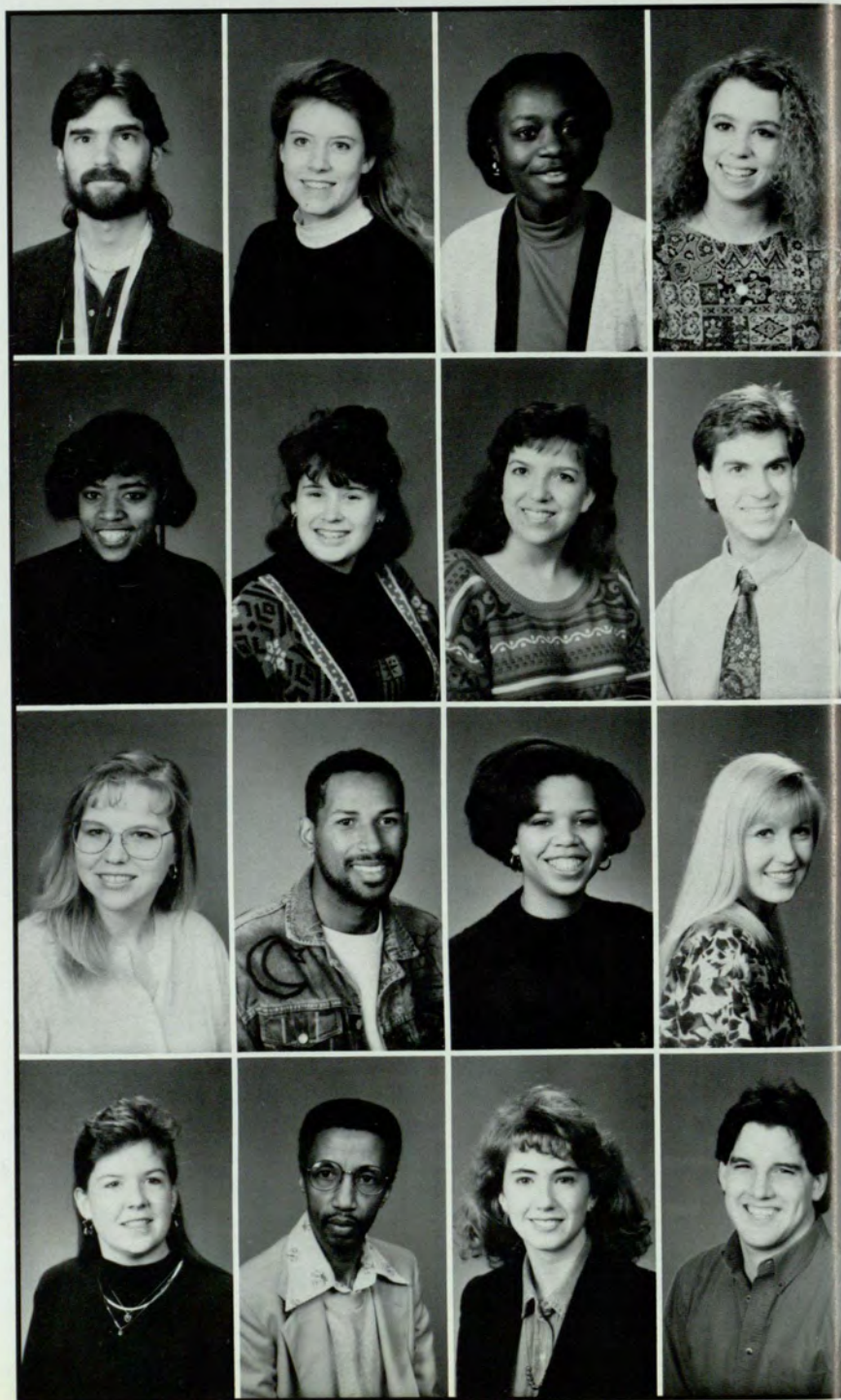
A bird's eye view of campus.  
Photo by Marc St.Pierre

Edward A. Randolph  
Tiffany A. Reinhold  
Michelle E. Ricketts  
Leigh Ridgway

Cheryl P. Robinson  
Debra A. Robinson  
Julie Rodriguez  
Brent G. Roman

Nancy M. Scott  
Talib A. Shabazz  
Monica Y. Shelton  
Ivy L. Sherrill

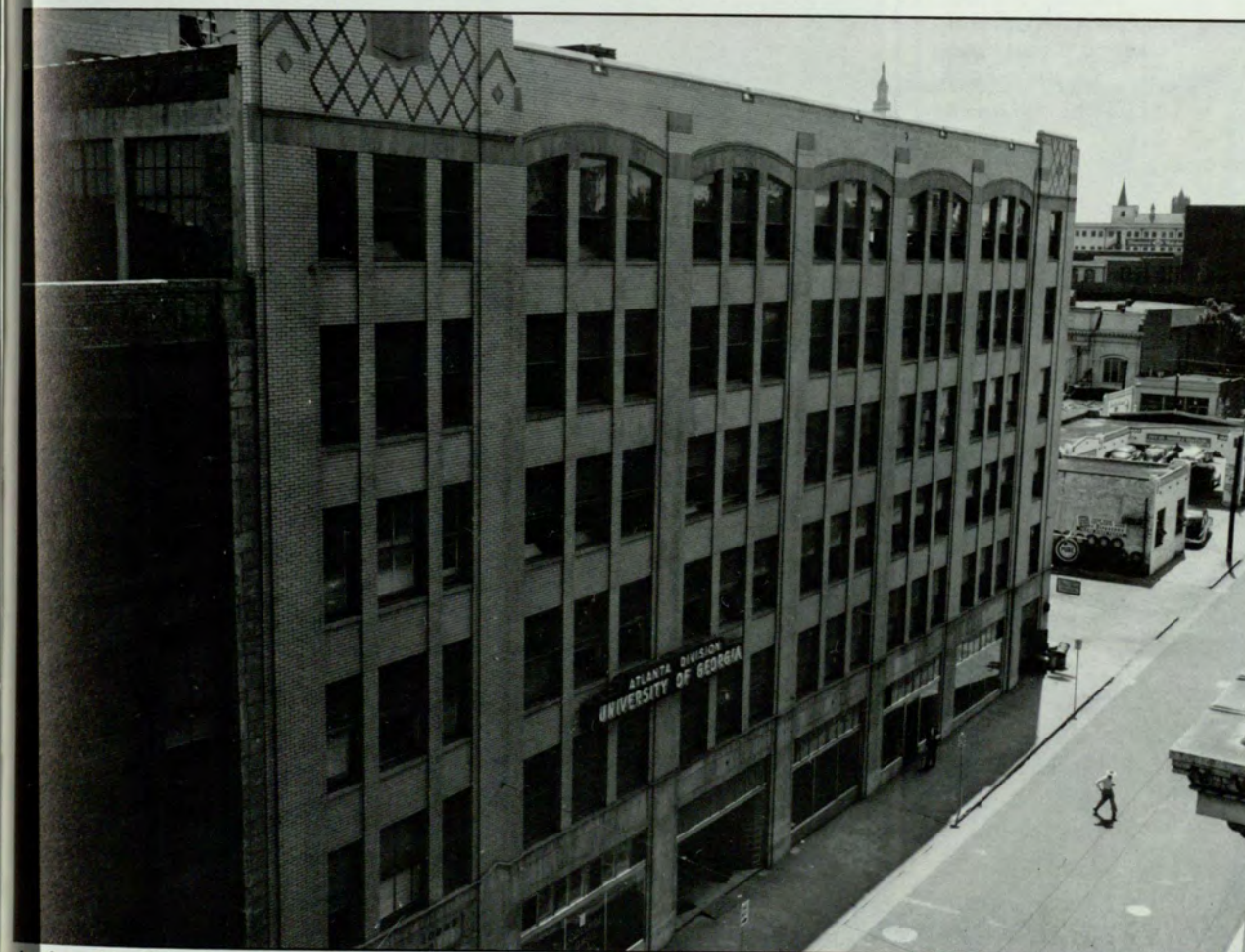
Stephanie D. Smith  
Musa Sowe  
Mary E. Steele  
Jason B. Stevens



Karen M. Stewart  
Melissa A. Stout  
Joyce M. Taylor  
Amy L. Thomas

Julie P. Tonner  
Michelle W. Torres  
Darryl R. Ward  
Heather Williamson

Nicole G. Wilson  
Heather Wyant  
Susan H. Xander



A view from the past. When Kell had windows along Peachtree Center Ave. and the General Classroom Building was an Amoco Station. Photo special.





SOMETHING'S

*Happening*

HERE

Above: Dean Baggett plans out another year for the students.  
Photo by: Katie Hensgen

Right: Walid Zohle and Ronnie Jarkas enjoy the sights on the plaza during spring quarter.  
Photo by: Rebecca Bounds



INDEX