

Georgia State Signal

Beacon Light of College Affairs



JIMMY BURTON, *Editor*



ALVIN RATTEREE, *Managing Editor*



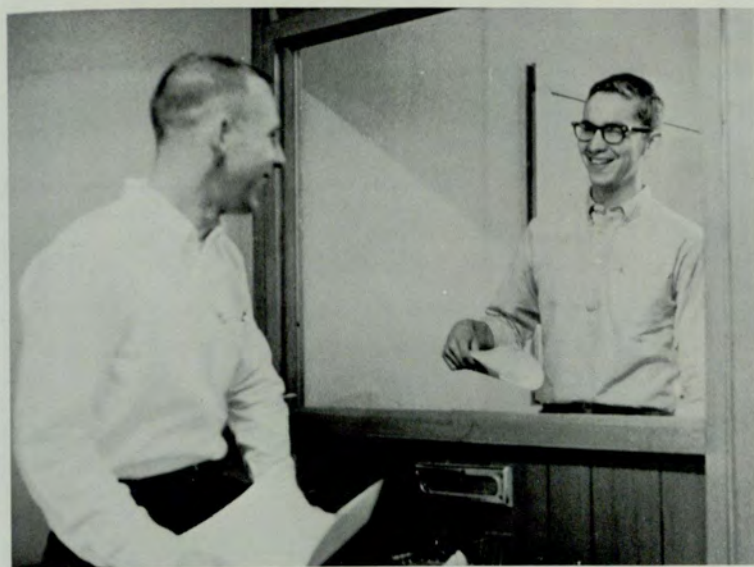
"Rat," Becky and Preston work late into the night to make up an issue of the SIGNAL before deadline.



Reporter Judy Nix interviews Dr. England for the SIGNAL.



MISS SANDY SUMMERVILLE



Reporters Don Clawson (left) and Ben Purcell (right) jovially turn in copy.

A usual argument occurs between Jimmy and Cary. Jim Fletcher and Preston listen attentively, refusing to take sides.



Marjory Borom, reporter, reads her latest story in the SIGNAL.



BECKY TUCKER, *News Editor*

The goal of the Georgia State Signal is to print news of the campus accurately and honestly, and to reflect the attitudes of the student body.

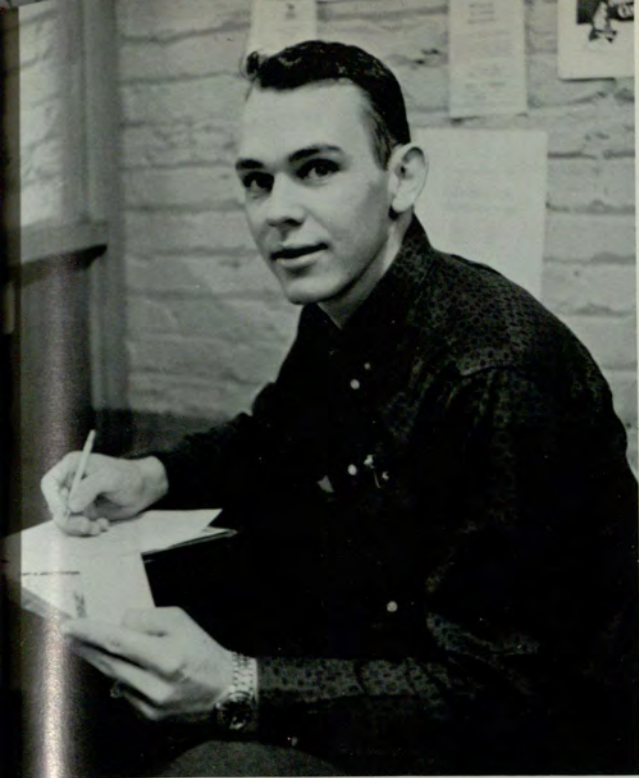
Each Signal staff member works in almost every capacity from copy-reader to janitor in order to produce a publication of high merit.



CARY HOWARD, *Feature Editor*



PRESTON CHARLES, *Make-up Editor*



JIMMY FLETCHER, *Business Manager*



DICK FIELD, *Sports Editor*



Howard Olson, *Art Editor*, and Carolyn Marrone, *Society Editor*



Jimmy Burton (right) discusses a problem in newspaper make-up with Preston Charles.



MARCIA STONE, *Fashion Editor*

Reporter Bob Knowles interviews Georgia State coed. What a job!



THE RAMPWAY



RICHARD McCRARY
Editor-in-Chief



CHRIS FLUEHR
Associate Editor



JANICE MATTOX
Assistant Editor



JERRY BAILEY
Business Manager



MEL BURTON
Sports Editor



PATTY WYNNE
Activity Editor



JERRY TYSON
Military Editor



BOB MASSEY
Fraternity Editor



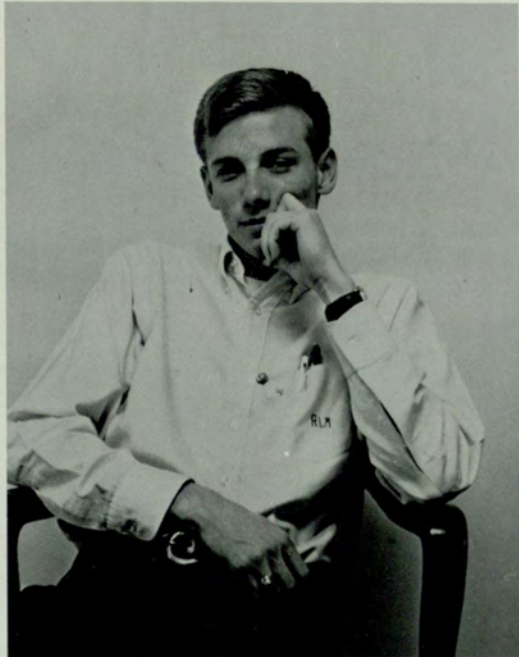
JOAN MCGAHEY
Sorority Editor



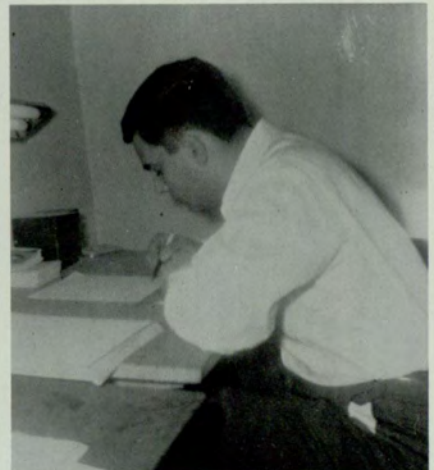
CATHY BERRY
Introduction



JEANNE COFIELD
Introduction



I'LL DO IT TOMORROW



I HOPE THE EDITOR IS LOOKING