

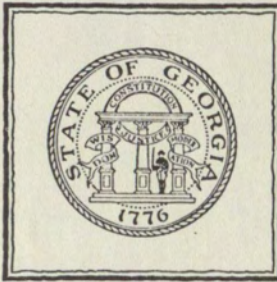
1940

# GATEWAY



LD 1965  
.G37  
1940  
c.2





University System  
of Georgia  
GEORGIA STATE COLLEGE  
LIBRARY

---





# 1940 Gateway

EVA ROB CHESHIRE  
Editor

JAMES BAGGOTT  
Business Manager

Published by the  
STUDENT BODY  
of the  
ATLANTA JUNIOR COLLEGE



# Foreword

The real aim of a college yearbook is to summarize, sublimize, and crystallize in the memories of her students the highlights and shadows of one short, happy year. The staff, with an eye to the future, has attempted to concentrate in an informal and comprehensive manner all the things which characterize our school life.

Gay and fleeting, these recorded seconds snatched from time are to recall the living pictures of the hurry-scurry to classes, frantic cramming, whispered jokes, vibrant conversation in the halls and lounge, best friends, and, dare it be said, even naps in the classroom.

In future years, as you thumb dreamily through these pages, there will be, we hope, stimulated cherished memories of life at Junior College in 1940.





LD 1961  
G85 G3  
1940  
C.2

LD 1965  
.G37  
1940  
C.2

## Dedication

To Dr. Merle Walker for her real understanding of students and their problems, for her helpfulness in social affairs and for her cheerfulness in classroom and in the reception line, and



To Dr. James Routh for his keen and helpful interest in school publications, for his subtle humor, and for his unceasing work to better our college, we, the GATEWAY Staff of 1940, dedicate this edition of the GATEWAY in behalf of the student body.

173507



# Faculty

GEORGE M. SPARKS, A.B., M.A., LL.D.  
 Mercer University; Oxford, England  
*Director of School*

T. M. McCLELLAN, B.S.C., M.S.C.  
 Georgia School of Technology; New York University  
*Registrar*

MADLINE HOSMER, A.B.  
 Washington University; St. Louis School of Fine Arts  
*Dean of Women*

CARL BROWN, B.S.E.E., B.C.S.  
 Georgia School of Technology; University System of Georgia Evening College

M. H. BRYAN, A.B., A.M.  
 University of Illinois

ELMER G. CAMPBELL, A.B., M.S., Ph.D.  
 Hiram College of Ohio; Purdue University; University of Chicago

CLAIRE CHRISTIAN, B.C.S.  
 University System of Georgia Evening College; Emory University

R. A. CHRISTOPHER, B.S.C.  
 University of Georgia





# Faculty



ERNEST HENRY EMORY, B.A., B.S.  
Mercer University; Georgia School of Technology



MRS. A. D. GREGORY, A.B., B.S.  
Centenary College



LUTHER R. HOGAN, A.B., M.A., LL.D.  
Mercer University; Ottawa University; Meridian College; University of Chicago; Columbia University



R. R. HOLLINGSWORTH, A.B., M.A., Ph.D.  
University of Washington; Columbia University; University of North Carolina



HAL HULSEY, A.B., M.A.  
University of Georgia; University System of Georgia Evening College; Emory University



ELEANOR JOHNSON



V. V. LAVROFF, B.S.C., M.A.  
Harbin, China; Georgia School of Technology; Emory University



WILLIAM P. LAYTON, B.Ph.  
Emory University





# Faculty

JOSEPH N. LeCONTE, A.B., M.S., Ph.D.  
Emory University; University of North Carolina

CARL MAULESHAGEN, A.B., M.A., Ph.D.  
University of Tennessee; University of Chicago;  
University of Minnesota

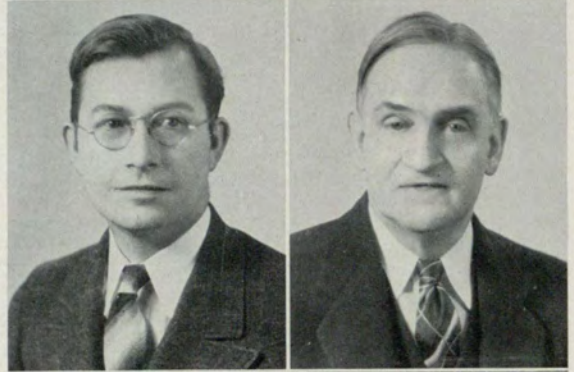
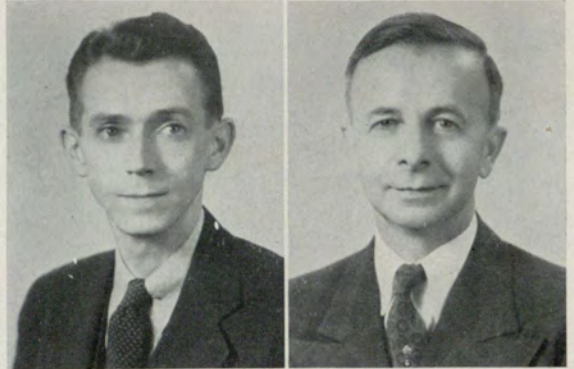
G. H. RICHTER, A.B., A.B.L.S.  
University of Georgia; Emory University

JAMES E. ROUTH, A.B., Ph.D.  
Johns Hopkins University

MRS. LINNIE TALLANT, R.N.

ANNIE TERRELL, B.S.H.E., M.S.H.E.  
University of Georgia

MRS. A. J. WALKER, A.B., M.A., Ph.D.  
Hollins Institute; Radcliffe College; Harvard  
University





S  
O  
P  
H  
O  
M  
O  
R  
E  
S



WILLIAM SUTTLES  
*President*

CHARLIE REYNOLDS  
*Vice-President*

JUDY SULLIVAN  
*Treasurer*

DORIS BROWN  
*Secretary*



## RUBY ADAMS

Gamma Kappa '38-'39 Secretary, '39-'40 Secretary;  
Junior Collegiate '38-'39; Sigma Pi Alpha '38-'39,  
'39-'40; Science Club '39-'40; Superlatives '39-'40.

## CORINNA AIKENS

Gamma Kappa '38-'39 Vice-President, '39-'40  
Pledge Captain; Home Economics Club '38-'40, '39-  
'40 Scrapbook Chairman.



ANN ASHBY  
Superlative '39-'40

## JAMES BAGGOTT

Tythenean Club '39-'40; Mental Telepathy Club  
'39-'40; *Flambo* Staff '39-'40; GATEWAY Staff '39-  
'40, Business Manager; Sigma Pi Alpha '39-'40;  
B. S. U. '39-'40.

# Sophomores





# Sophomores

LEILA BALDWIN

Delta Alpha Delta '38-'39, '39-'40 Vice-President;  
Sigma Pi Alpha '39-'40; B. S. U. '39-'40.



BEN BAKER



MYRA BARBER

Chi Rho Sigma '38-'39, '39-'40; Glee Club '38-'39,  
'39-'40; Arvian Club '37-'38; Stage Crafters  
'37-'38.

MARTHA ANNE BASS

Gamma Kappa '38-'39, '39-'40 Vice-President;  
Sigma Pi Alpha; Interfraternity Council '39-'40.





## DOROTHY BAUGH

Home Economics Club '38-'39, '39-'40 Vice-President; Interfraternity Council '39-'40.

## T. C. BAYMORE



## MAXINE BROCK

Gamma Kappa '38-'39, '39-'40 Scribe; GATEWAY Staff '38-'39, '39-'40; Stage Crafters '38-'39, '39-'40; Wesley Foundation '39-'40 Vice-President; *Junior Collegiate* Staff.

## DORIS BROWN

Secretary Sophomore Class; Sigma Pi Alpha '38-'39; Delta Alpha Delta '38-'39, '39-'40 Secretary; Stage Crafters '39-'40.

# Sophomores





# Sophomores

SARAH BROWNE

Chi Rho Sigma '38-'39, '39-'40 Secretary; Home Economics Club '38-'39 Secretary, '39-'40 President; Interfraternity Council '39-'40 Secretary.



W. E. BURKE

Debating Club '39-'40 President; Tythenean Club '39-'40; Wesley Foundation '39-'40.



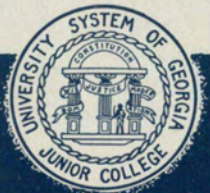
CHARLES BUTT

Tythenean Club '39-'40; Rabbit Runners '38-'39, '39-'40 Secretary; Phi Sigma Alpha; Mental Telepathy Club.



GERALDINE CAMP

Gamma Kappa '38-'39, '39-'40; B. S. U. '38-'39, '39-'40 Second Vice-President.





# 1940 Gateway

## W. E. CAMP

GATEWAY Staff '38-'39, '39-'40 Art Editor; Stage Crafters '38-'39 President, '39-'40 President; Art Club '38-'39; Tythenean Society '39-'40; Rabbit Runners '39-'40; Mental Telepathy Club '39-'40; Interfraternity Council '39-'40; Phi Sigma Alpha '39-'40.

## DOROTHY CARLTON

Gamma Kappa '38-'39, '39-'40; Home Economics Club '38-'39, '39-'40.



## GRIFFIN CARMICHAEL

Sigma Pi Alpha '38-'39, '39-'40 Secretary, Key; Stage Crafters '38-'39, '39-'40 Stage Manager; Tythenean Society '39-'40; Science Club '39-'40; Episcopal Club '39-'40.

## VIRGINIA CHASTAIN

B. S. U. '39-'40; Chi Rho Sigma '39-'40; Sigma Pi Alpha '39-'40.

# Sophomores





# Sophomores

## EVA ROB CHESHIRE

GATEWAY '39-'40 Editor; Chi Rho Sigma '38-'39, '39-'40 Vice-President; Mental Telepathy Club '39-'40; Stage Crafters '38-'39; Art Club '38-'39; Sigma Pi Alpha '38-'39, '39-'40 Key; Rabbit Runners '38-'39, '39-'40; Student Council '39-'40 Vice-President.

## MARTHA CRAWFORD

Flambo Staff '38-'40; Stage Crafters '39-'40; B. S. U. '39-'40.

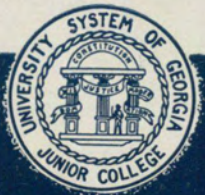
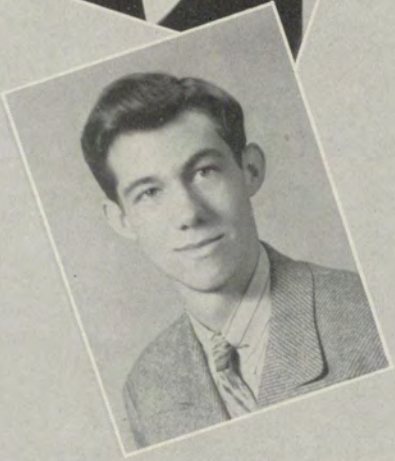


## MARIE CROFT

Chi Rho Sigma '38-'39, '39-'40 Scribe; GATEWAY Staff '38-'39; Student Council '39-'40.

## FLETCHER DALEY

GATEWAY Staff '39-'40; Sigma Pi Alpha '38-'39; Phi Sigma Alpha '38-'39, '39-'40 Treasurer; Basketball Varsity '38-'39; Tythenean Society '39-'40; Mental Telepathy Club '39-'40; Science Club '39-'40; Rabbit Runners '39-'40; B. S. U. '39-'40.





# 1940 Gateway

## DOLORES DOSTER

Gamma Kappa '38-'39, '39-'40 Sergeant-at-Arms;  
Interfraternity Council '38-'39; B. S. U. '38-'39,  
'39-'40.

## LILLIAN DURLING

Delta Alpha Delta '38-'39, '39-'40 Scribe; *Junior  
Collegiate Staff* '38-'39; *Flambe Staff* '38-'39, As-  
sistant Editor.



## SIDNEY FELDMAN

Basketball Varsity '38-'39.

## WALTER FREEMAN

Basketball Varsity Team '38-'39; Tythenean So-  
ciety '39-'40; Rabbit Runners '39-'40; Mental  
Telepathy Club '39-'40 Vice-President; Phi Sigma  
Alpha '39-'40 Secretary.

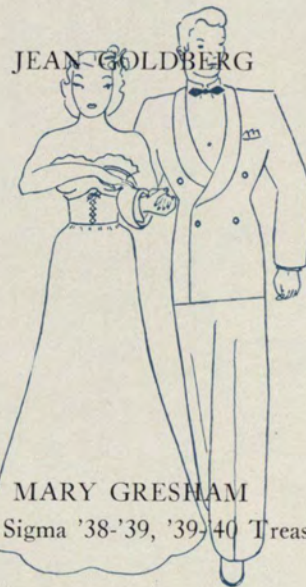


## Sophomores



# Sophomores

HOMER GIBBY  
B. S. U. '39-'40.



MARY GRESHAM  
Chi Rho Sigma '38-'39, '39-'40 Treasurer.

FRANCES GUNTER

Interfraternity Council '38-'39; Delta Alpha Delta  
'38-'39, '39-'40; *Junior Collegiate* Staff '38-'39,  
'39-'40; Riding Club '38-'40; B. S. U. '39-'40.





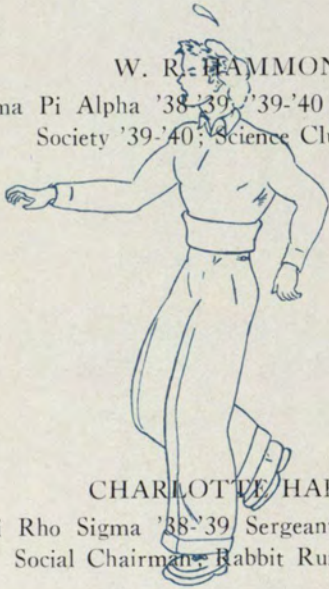
# 1940 Gateway

MILDRED HAMMOCK



W. R. HAMMOND

Sigma Pi Alpha '38-'39, '39-'40 Key; Tythenean Society '39-'40; Science Club '39-'40.



CHARLOTTE HARDIN

Chi Rho Sigma '38-'39, Sergeant-at-Arms, '39-'40  
Social Chairman; Rabbit Runners '39-'40.



ELIZABETH HARRIS

Chi Rho Sigma '39-'40; Rabbit Runners '39-'40;  
GATEWAY Staff '39-'40; Wesley Foundation '39-'40;  
Mental Telepathy Club '39-'40.



*Sophomores*



# Sophomores

## JERRY HASTINGS

Champion Bowler '38-'39; Second Place Bowler '39-'40; Phi Sigma Alpha '39-'40 Sergeant-at-Arms; Student Council '38-'39; Bowling Team '39-'40 Captain.



## PATRICIA HEAD

Sigma Pi Alpha '39-'40; Filee Club '38-'39, '39-'40.



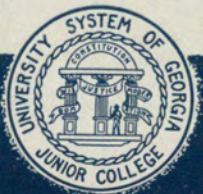
## ANNIE BELLE HENRY

Stage Crafters '38-'39; Sigma Pi Alpha '38-'39.



## BETH HERZOG

Sigma Pi Alpha '39-'40; *Flambo* Staff '39-'40; Stage Crafters '39-'40.





ROSE HUNTER

Delta Alpha Delta '38-'39, '39-'40.

KATE HYNES

Chi Rho Sigma '38-'39, '39-'40.



ALICE NELL KERN

Chi Rho Sigma '38-'39, '39-'40; Home Economics Club '39-'40; Riding Club '39-'40.

LEILA KILPATRICK

Delta Alpha Delta '38-'39 Pledge Captain, '39-'40 President; Sigma Pi Alpha '38-'39; Riding Club '39-'40; Interfraternity Council '39-'40; B. S. U. '39-'40 Publicity Chairman.

*Sophomores*





# Sophomores

BESSIE MAE KNIGHT  
Gamma Kappa '39-'40.



JOY LENNEY  
GATEWAY Staff '38-'39; Glee Club '38-'39; Art  
Club '38-'39 Vice-President; Sigma Pi Alpha  
'38-'39.



JACK LEVY  
Flambo Staff '39-'40.



HARVEY LIVINGSTON  
GATEWAY Staff '39-'40; Tythenean Society '39-'40;  
B. S. U. '39-'40.





## ANN MAGINSKY

Home Economics Club '38-'39, '39-'40 Publicity  
Chairman; Basketball Varsity Team '38-'39.



MARGARET MASON

## JANET McCRARY

Chi Rho Sigma '38-'39, '39-'40.

## MARION LOWE

Stage Crafters '39-'40; Sigma Pi Alpha '39-'40; B.  
S. U. '38-'39, '39-'40 Third Vice-President.

# Sophomores





# Sophomores

FRED MEYER



HELEN MORGAN

Delta Alpha Delta '38-'39, Social Chairman '39-'40; B. S. U. '38-'39; Sigma Pi Alpha '38-'39; Interfraternity Council '39-'40.



SARAH FARRISH

B. S. U. '38-'39, '39-'40; Home Economics Club '38-'39, '39-'40.



LAVINIA PARTEE

Delta Alpha Delta '38-'39, '39-'40 Sergeant-at-Arms; Riding Club '39-'40 Secretary and Treasurer; B. S. U. '38-'39, '39-'40.



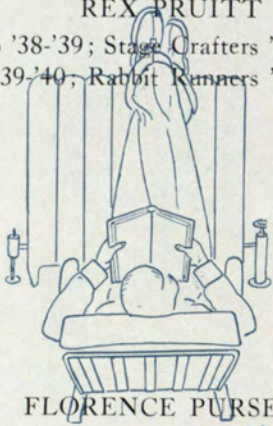


## NINETTE PAYNE

Riding Club '39-'40 President; Interfraternity Council '39-'40; Tennis Team '39-'40; Basketball Varsity '39-'40.

## REX FRUITT

Glee Club '38-'39; Stage Crafters '38-'39; B. S. U. '38-'39, '39-'40; Rabbit Runners '38-'39, '39-'40.



## FLORENCE PURSELL

Delta Alpha Delta '39-'40; Wesley Foundation '39-'40.

## LA LA RAWLS

# Sophomores





# Sophomores

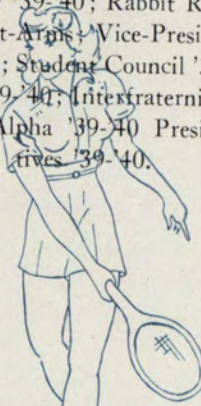
## EUGENIA REDFERN

Delta Alpha Delta '39-'40; *Flambo* Staff, Assistant Editor; Sigma Pi Alpha '39-'40.



## CHARLES REYNOLDS

Tythenean Society '39-'40; Rabbit Runners '38-'39, '39-'40 Sergeant-at-Arms; Vice-President of Sophomore Class '39-'40; Student Council '39-'40; Mental Telepathy Club '39-'40; Intexfraternity Council '39-'40; Phi Sigma Alpha '39-'40 President; Superlatives '39-'40.



## VIRGINIA ROBERTS

Stage Crafters '38-'39; Home Economics Club '39-'40; Gamma Kappa '39-'40; Mental Telepathy Club '39-'40.



## LOUISE ROGERS

Alvinian Club '38-'39 Secretary; Stage Crafters '38-'39; Art Club '38-'39; Delta Alpha Delta '39-'40; B. S. U. '38-'39.





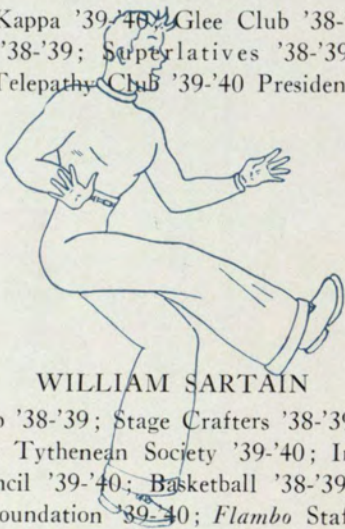
## CONRAD ROUTH

Phi Sigma Alpha '38-'39, '39-'40 Vice-President;  
Rabbit Runners '38-'39, '39-'40 Vice-President;  
Student Council '39-'40 Treasurer; Treasurer of  
Student Body; Interfraternity Council '39-'40;  
GATEWAY Staff; Science Club '39-'40.



## BERNEVA RUSH

Gamma Kappa '39-'40; Glee Club '38-'39; Stage  
Crafters '38-'39; Superlatives '38-'39; Mental  
Telepathy Club '39-'40 President.



## WILLIAM SARTAIN

Glee Club '38-'39; Stage Crafters '38-'39 Business  
Manager; Tythenean Society '39-'40; Interfrater-  
nity Council '39-'40; Basketball '38-'39, '39-'40;  
Wesley Foundation '39-'40; *Flambo* Staff '39-'40;  
Superlatives '39-'40.



## JOHN SIMPSON

President of Freshman Class '38-'39; Interfraternity  
Council '38-'39; Phi Sigma Alpha '38-'39 Treas-  
urer; Glee Club '38-'39 Vice-President; Tythenean  
Society '39-'40; Rabbit Runners '38-'39, '39-'40.



## Sophomores



# Sophomores

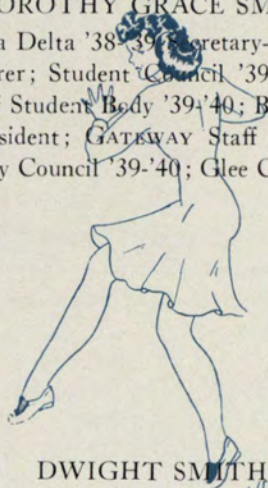
BOB SMITH

Boys' Bowling Champion '39-'40.



DOROTHY GRACE SMITH

Delta Alpha Delta '38-'39 Secretary-Treasurer, '39-'40 Treasurer; Student Council '39-'40 Secretary; Secretary of Student Body '39-'40; B. S. U. '38-'39, '39-'40 President; GATEWAY Staff '39-'40; Interfraternity Council '39-'40; Glee Club '38-'39.



DWIGHT SMITH

Rabbit Runners '38-'39, '39-'40; Phi Sigma Alpha '39-'40.

ROBERTA SPRATLIN

Gamma Kappa '38-'39 Treasurer, '39-'40 President; Interfraternity Council '39-'40.





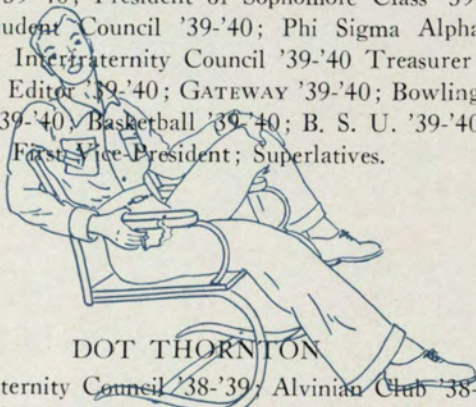
## BETTY SUTHERLAND

Stage Crafters '38-'39 Advertising Manager; Art Club '38-'39 Secretary-Treasurer; Rabbit Runners '38-'39, '39-'40; Mental Telepathy Club '39-'40 Secretary-Treasurer; Sigma Pi Alpha '39-'40; Chi Rho Sigma '39-'40; GATEWAY Staff.



## WILLIAM (BILL) SUTTLES

Tythenean Society '39-'40 President; Rabbit Runners '38-'39 President, '39-'40 President; Sigma Pi Alpha '39-'40; President of Sophomore Class '39-'40; Student Council '39-'40; Phi Sigma Alpha '39-'40; Interfraternity Council '39-'40 Treasurer; *Flambo* Editor '39-'40; GATEWAY '39-'40; Bowling Team '39-'40; Basketball '39-'40; B. S. U. '39-'40 First Vice-President; Superlatives.



## DOT THORNTON

Interfraternity Council '38-'39; Alvinian Club '38-'39; Delta Alpha Delta '38-'39, Second Vice-President '39-'40; GATEWAY Staff '38-'39; Stage Crafters '38-'39.



## BOYD UPCHURCH

Sigma Pi Alpha '38-'39; Tythenean Society '39-'40; *Flambo* Staff.





# Sophomores

JOHN VAN FLEET

Phi Sigma Alpha '39-'40; Superlatives.



DOROTHY MANN

MARGARET ANNE WARD

Gamma Kappa '39-'40; Wesley Foundation Treasurer '39-'40.

CLYDELLE WEBB

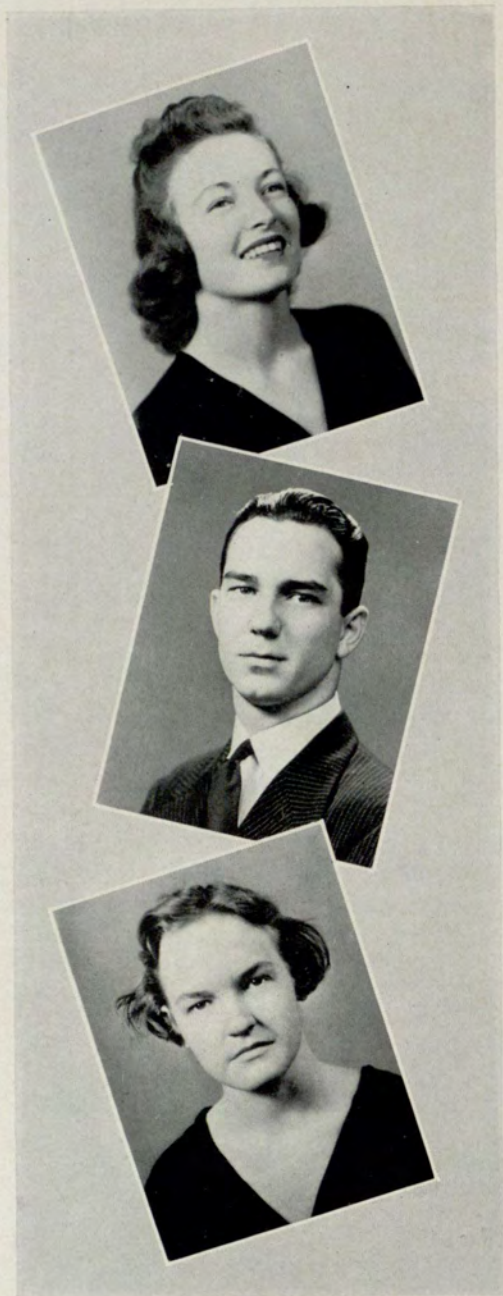
Gamma Kappa '39-'40; Home Economics Club '39-'40.





## HARRIETT WILKIE

Chi Rho Sigma '38-'39, '39-'40 President; Rabbit Runners '38-'39, '39-'40; Riding Club '39-'40; Student Council '39-'40 President; President of Student Body '39-'40; Interfraternity Council '39-'40 President; Superlatives; Sigma Pi Alpha '39-'40; Wesley Foundation '39-'40.





**F  
R  
E  
S  
H  
M  
E  
N**



PEGGY PAIR  
*Vice-President*

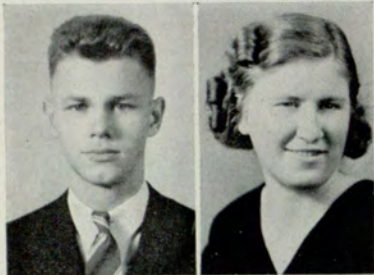
GRAHAM MOBLEY  
*President*

LOUISE ROACH  
*Secretary*

DOROTHY HALE  
*Treasurer*



# 1940 Gateway



EMORY ADAMS  
FRANCES MAE ARNOLD



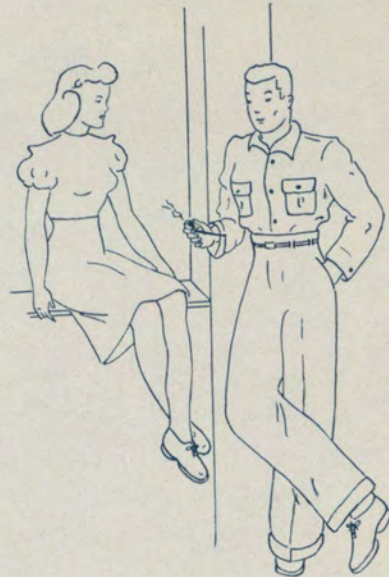
BILLIE ASTIN  
MARY BARBER



LAMAR BECKWITH  
BETTY BERRY



DORIS BERRY  
WILLIE PEARL BLACK



FRED BORING  
DOROTHY BRESEE



BETTYE BRISENDINE  
SHERWOOD BROOME



## Freshmen





NEWTON BURKE  
ODIEL BURNETT



JEANNE CHAFIN  
ANN CHANDLER



EARLINE CHESNEY  
HARRY COATS

THOMAS COFFEE  
MARY DOOM



RUTH DOUGHERTY  
MARTHA DOYLE



HENRY MERLE EASON  
PEGGY ECHOLS





# 1940 Gateway



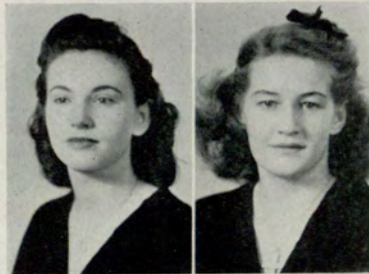
DOROTHY ENGE  
DOROTHY ESTES



IDELLE FERGUSON  
BEVERLY FRANKS



JUNE GINGRICH  
PAT GLACCUM



MARIE GODWIN  
LADY MARY GRIFFIN



DOROTHY HALE  
LOUISE HARPER

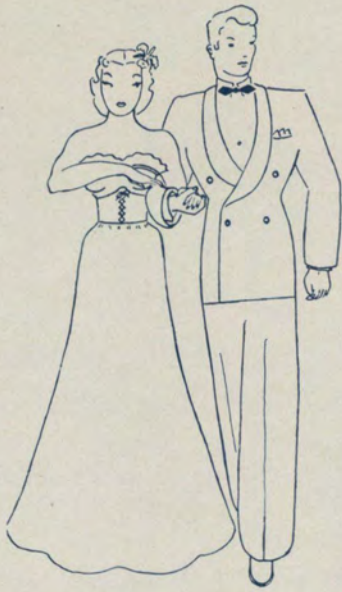


ELIZABETH HARRALSON  
MILDRED HARRIS



*Freshmen*





SALLY HOLDER  
MARY NELL HOLLAND



GUY HOPE  
JUNE HOPKINS

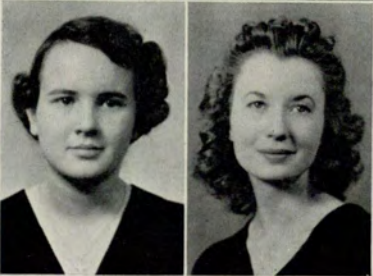


DOROTHY HUDDLESTON  
BEN HUIET

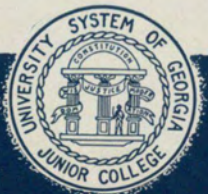
ORVILLE HUMBER  
CATHERINE IRWIN



JAMES IRWIN  
WILLIAM JEFFARES



NAN JONES  
MARY KENDRICK





# 1940 Gateway



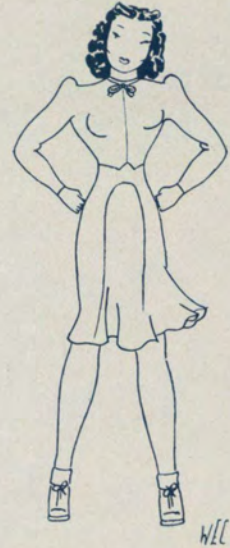
ANN KIDD

CLARENCE KING

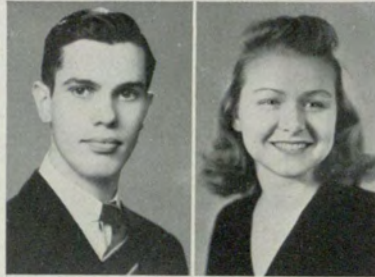


ROSA LANDAU

LOUISE LINDSEY



CLEMENTINE LIVINGSTON  
ELOISE LOVELACE



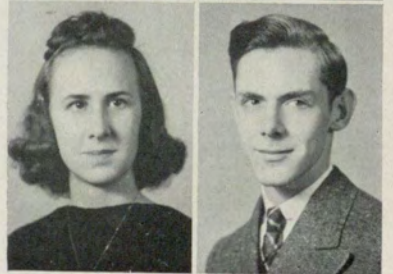
THURMAN MCCOY  
ELLENE McDONALD



LEONA McMICHAEL  
MARY LOUISE MERRIMAN



BETTYE MITCHELL  
GRAHAM MOBLEY



## Freshmen





RUSSELL MOORE  
WILHELMINA MOZELY



SARA MOSES  
RUTH MOULDER



JARVIS MURRAY  
ANN NEIDLINGER

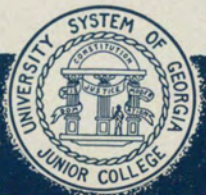
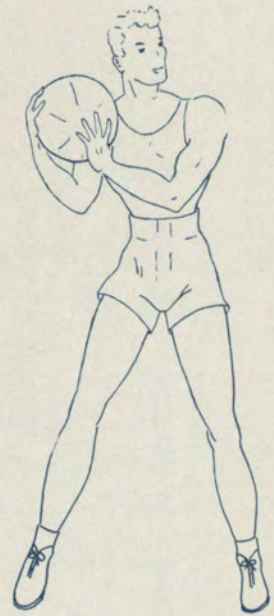
ELSIE NELMS  
HELEN O'BRIAN



ROSE O'QUINN  
ANNE OSBORNE



PEGGY PAIR  
DOROTHY PIERCE





# 1940 Gateway



JACK PLAMPIN  
VIRGINIA REEVES



LOUISE ROACH  
BARON ROBERTS



JOHN ROBERTS  
MARGUERITE ROGERS



HELEN SEAVER  
JACQUELYNN SISK

CHARLOTTE SMITH  
JULIET SMITH



BONNIE ROWE  
MILDRED SCOTT

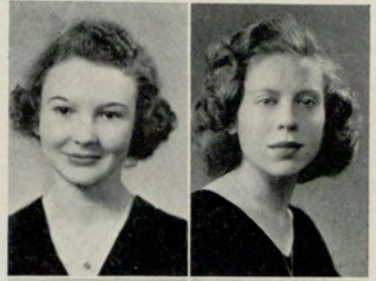


## Freshmen





NELLE SNOW  
DOROTHY STEPHENS



DOROTHY ANNE STEPHENS  
BETSY STOCKBRIDGE

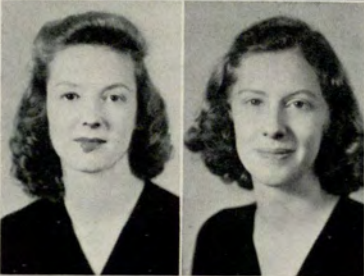


HELEN STOLLARD  
HOWARD STRICKLAND

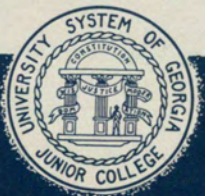
MARGUERITE THREADGILL  
JACK TIPTON



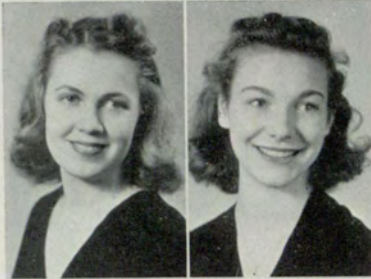
FRANCES TISDALE  
EVELYN WAGES



ANNE WALKER  
EVIE WARLICK



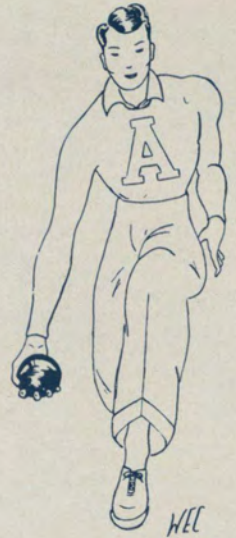




DOROTHY WARREN  
PEGGY WATKINS



ELEANOR WATSON  
T. J. WEATHERLY



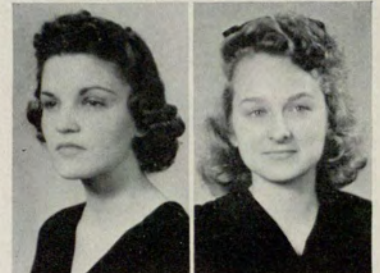
MARY HILL WELCH  
MARIE WHITE



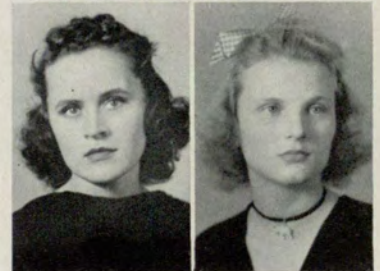
WALLACE WHITE  
MARTHA WILLIAMS



ROCHELLE WILLIAMS  
LILLIAN WILLOUGHBY



ROSEMARY WRIGLEY  
ELIZABETH YARBOROUGH



*Freshmen*



S  
P  
O  
R  
T  
S







### BASKETBALL

For the first time this year the Junior College had a fully equipped girls' varsity basketball team. New uniforms of bright gold and royal blue were furnished the players. Games were secured with West Georgia College (two games), Lithonia, Marsh Business College, Milstead, Goodyear Mills, Kirkwood, and Washington Seminary (two games). Mary Bumstead, one of the college's best players, was elected captain. Other members of the team were: Ninette Payne, Margaret Johnson, Betty Remseur, Mary Wilmot, Lil Holmes, Vivian Campbell, Sally Holder, Anne Ashurst, Leila Baldwin, and Martha Robinson.

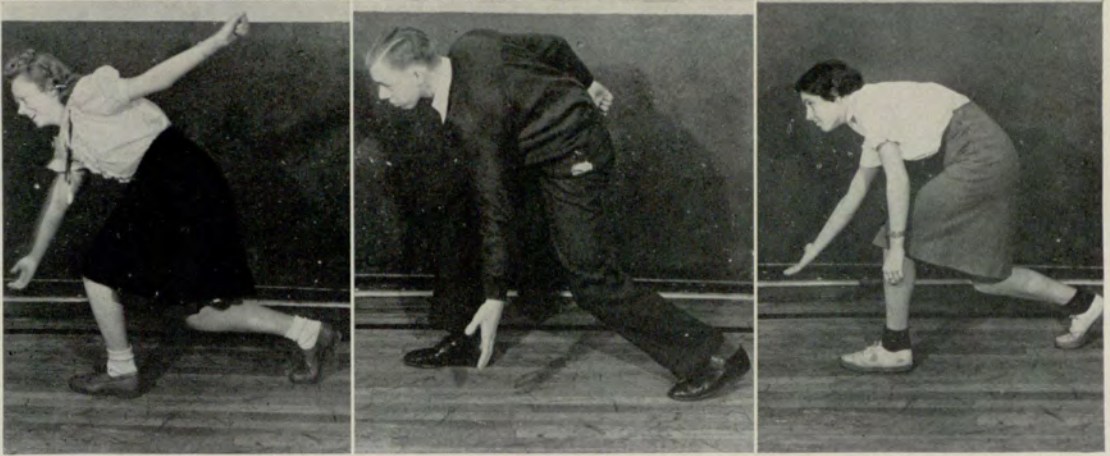
A lively series of class games between the Freshmen and Sophomores resulted in the Sophomores becoming champions of the college. Members of the Sophomore team were: Pat Head, Ninette Payne, Mary Bumstead, Leila Baldwin, Martha Robinson, and Billy Ramseur. Members of the varsity were given gold basketballs and members of the winning class team were given sterling silver basketballs. (If you want names of Freshman team, see Souvenir Sports Edition of *Junior Collegiate*.)

The Junior College boys combined with the Evening College boys to form a boys' varsity basketball team. This year three Junior College boys made the squad. They were Sidney Feldman, Fletcher Daly, and Walter Freeman.

The Sophomore boys won the intramural contests from the Freshmen. Members of the winning team were: Bill Suttles, W. C. Winfree, Sidney Feldman, Walter Freeman, Bill Sartaine, Fletcher Daly, and Dwight Smith. They were presented sterling silver basketballs.

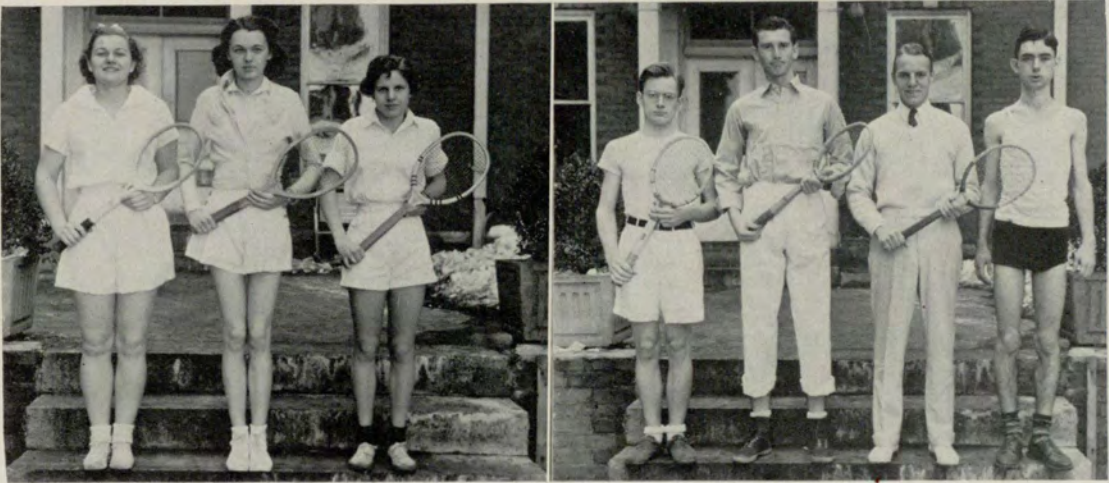


B  
O  
W  
L  
I  
N  
G



BOWLING

A very successful bowling season was enjoyed by the Junior College on some of the South's best bowling alleys. Silver cups were given the students making the highest number of points for the season. Anne Ashurst and Lena Wagnon tied for first place for the girls, both receiving cups. Robert Smith was first and Jerry Hastings second for the boys' honors. Luda McElroy's team composed of Fletcher Daly, Dot Beavers, Martha Anne Bass, Vivian Campbell, Frances Gunter, Arthur Harrington, Dot Huddleston, Dot Pierce, Charlotte Smith, Helen Stoddard, Bill Suttles, and Marguerite Threadgill won the medals for the best team score.



TENNIS TOURNAMENTS

Each year two tennis tournaments are held, in the fall and in the spring. Winners of the girls' fall tournament were Ninette Payne, in number one position, and Anne Ashurst, number two. Sidney Underwood won the boys' tournament over Claude Rainey; medals were presented the winners. The spring tournament was held too late for the results to be printed in the annual.

T  
E  
N  
N  
I  
S



R  
I  
D  
I  
N  
G  
  
V  
O  
L  
L  
E  
Y  
B  
A  
L



WINNERS OF SKATING

- Most Graceful Boy* (Cup) . . . . . GRAHAM MOBLEY  
*Most Graceful Girl* (Cup) . . . . . MARY VIRGINIA COUCH  
*Most Graceful Couple* (Medals) . { (1) W. C. WINFREE AND LOUISE LINDSEY  
 . { (2) FRED MEYER AND MARY VIRGINIA COUCH

VOLLEYBALL



<i>Team</i>	<i>Rating</i>
Skunks . . . . .	1
Wildcats . . . . .	2
Jitterbugs . . . . .	3
Red Wagons . . . . .	3
Yellow Jackets . . . . .	4
B. O.'s . . . . .	4
Polecats . . . . .	5
Killer Dillers . . . . .	6



**O  
R  
G  
A  
N  
I  
Z  
A  
T  
I  
O  
N  
S**



"Tuxedo Junction," "Stop, It's Wonderful," "You've Got To Be a Football Hero,"  
"In My Merry Oldsmobile," "Beer Barrel Polka," "I'm Fit To Be Tied," "Horses,  
Horses," "Hooray For Spinach."



## INTERFRATERNITY COUNCIL



HARRIETT WILKIE  
*President*

The Interfraternity Council is composed of representatives from each Junior College organization for the purpose of binding together all the clubs of the college into a closer and more co-operative relationship, and of regulating social functions given.



BILL SUTTLES  
*Treasurer*



FRANCES GUNTER  
*Vice-President*



MRS. HOSMER  
*Faculty Advisor*



SARAH BROWNE  
*Secretary*





PEGGY PAIR  
*Chi Rho Sigma*

HELEN MORGAN  
*Delta Alpha Delta*



LEILA KILPATRICK  
*Delta Alpha Delta*

ROBERTA SPRATLIN

MARTHA ANNE BASS  
*Gamma Kappa*



CHARLIE REYNOLDS

EMORY ADAMS  
*Phi Sigma Alpha*

DORIS BERRY  
*Glee Club*

DOT BAUGH  
*Home Economics  
Club*



HARVEY LIVINGSTON  
*Tythenan Club*

NINETTE PAYNE  
*Riding Club*

W. E. BURK  
*Debating Council*

W. E. CAMP  
*Stage Crafters*

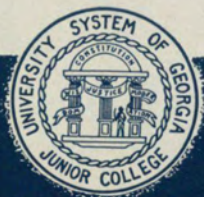


ELEANOR WATSON  
*Stage Crafters*

BETTIE BRISENDINE

BILL SARTAIN  
*Wesley Foundation*

DOROTHY G. SMITH  
*Baptist Student  
Union*





# 1940 Gateway

## STUDENT COUNCIL



HARRIETT WILKIE  
*President*

The purposes of the governing body are: to express the will of the majority of the student body in the guidance of student activities; to strive toward an even closer understanding between the faculty and students, and to work toward the betterment and growth of the Junior College and its students.



EVA ROB CHESHIRE  
*Vice-President*



CONRAD ROUTE  
*Treasurer*



DOROTHY GRACE SMITH  
*Secretary*

BILL SUTTLES  
*Sophomore President*

CHARLIE REYNOLDS  
*Sophomore Vice-President*

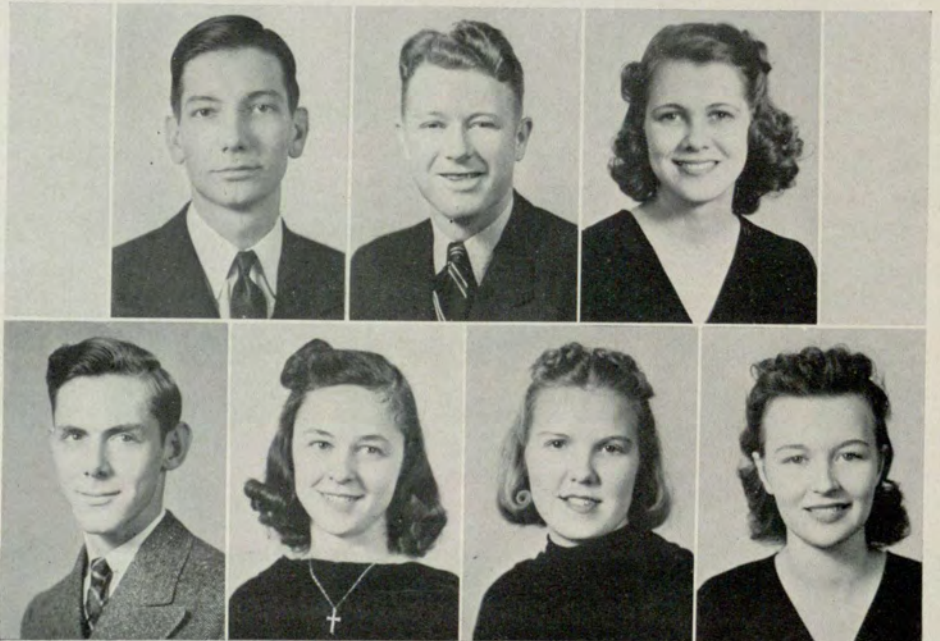
MARIE CROFT  
*Sophomore Representative*

GRAHAM MOBLEY  
*Freshman President*

PEGGY PAIR  
*Freshman Vice-President*

HELEN O'BRIAN  
*First Representative*

ELEANOR WATSON  
*Second Representative*





MARTHA ANNE BASS  
*Vice-President*

RUBY ADAMS  
*Secretary*

MAXINE BROCK  
*Scribe*



ROBERTA SPRATLIN  
*President*



CORINNA AIKENS  
*Pledge Captain*

DOLORES DOSTER  
*Sergeant-at-Arms*

MISS LINNIE TALENT  
*Faculty Advisor*

The purpose of this sorority shall be to promote sociability among its members and the students of the Atlanta Junior College.



D. BERRY  
B. M. KNIGHT

G. CAMP  
V. ROBERTS

D. CARLTON  
B. RUSH

I. FERGUSON  
H. STOLLARD

C. IRWIN  
M. A. WARD



C. WEBB



G  
A  
M  
M  
A  
  
K  
A  
P  
P  
A





**D  
E  
L  
T  
A  
  
A  
L  
P  
H  
A  
  
D  
E  
L  
T  
A**



LEILA KILPATRICK  
*President*

The purposes of this sorority are: to perfect, and in daily life, to carry out the meaning of sisterhood; to try ourselves to reach the highest standards possible, physically, mentally, and morally; and to be forgetful of self and mindful of others.



LEILA BALDWIN  
*Vice-President*



DORIS BROWN  
*Secretary*



DOROTHY GRACE SMITH  
*Treasurer*



LILLIAN DURLING  
*Scribe*



ELEANOR WATSON  
*Pledge Captain*



HELEN MORGAN  
*Social Chairman*



LAVINIA PARTEE  
*Sergeant-at-Arms*





J. CHAFIN  
R. L. DOUGHERTY  
P. ECHOLS  
D. ESTES

B. FRANKS  
F. GUNTER  
S. HOLDER  
R. HUNTER

L. McMICHAEL  
R. O'QUINN  
A. OSBORNE  
F. PURSELL

E. REDFERN  
L. ROGERS  
M. ROGERS  
J. SMITH

B. STOCKBRIDGE  
D. THORNTON  
M. H. WELCH  
M. WILLIAMS





C  
H  
I  
R  
H  
O  
S  
I  
G  
M  
A

The Chi Rho Sigma sorority was organized in order to establish a feeling of friendship among its members; to insure trust, faith, and sisterly relationship in one another; and to foster consciousness of school spirit.



EVA ROB CHESHIRE  
*Vice-President*



SARAH BROWNE  
*Secretary*



HARRIETT WILKIE  
*President*



MARY GRESHAM  
*Treasurer*





CHARLOTTE HARDIN  
*Pledge Captain*

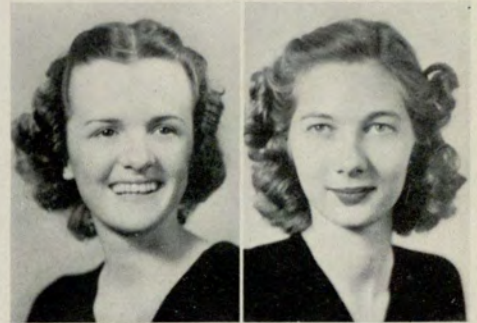
MARIE CROFT  
*Scribe*

DR. MERLE WALKER  
*Faculty Advisor*



M. BARBER

B. BRISENDINE



A. CHANDLER

V. CHASTAIN

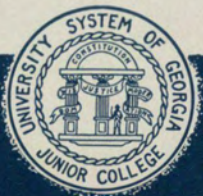
E. HARRALSON



E. HARRIS

M. HARRIS

K. HYNES





# 1940 Gateway



A. KERN

L. LINDSEY

E. LOVELACE

J. McCRARY



B. MITCHELL

S. MOSES

A. NEIDLINGER

E. NELMS



P. PAIR

L. ROACH

B. SUTHERLAND

E. WAGES



A. WALKER

D. WARREN

P. WATKINS



M. WHITE

L. WILLOUGHBY

R. WRIGLEY

*Chi Rho Sigma*



# The Rabbit Runners



BILL SUTTLES  
*President*



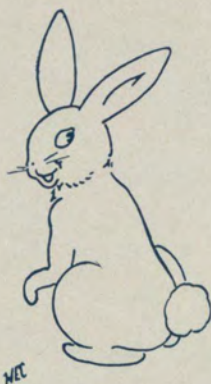
CONRAD ROUTH  
*Vice-President*



CHARLES BUTT  
*Secretary*



CHARLIE REYNOLDS  
*Sergeant-at-Arms*



The Rabbit Runners Club was organized in 1939 for the purpose of promoting fun and friendship among the students.

W. E. CAMP

E. R. CHESHIRE

F. DALEY

W. FREEMAN

C. HARDIN

E. HARRIS

J. HASTINGS

J. MURRAY

P. PAIR

R. PRUITT

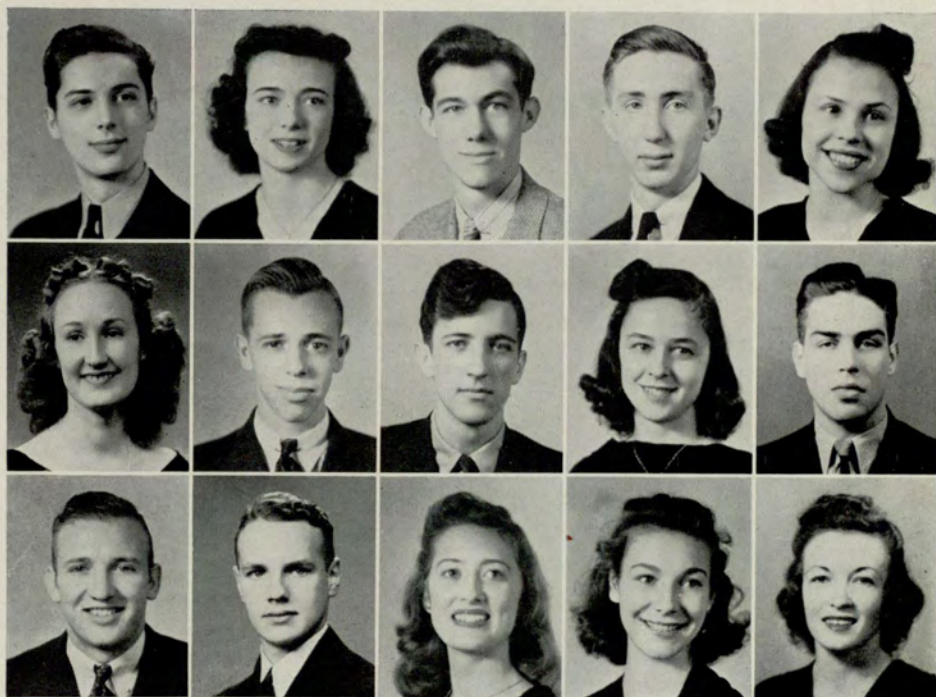
J. SIMPSON

D. SMITH

B. SUTHERLAND

P. WATKINS

H. WILKIE





**P  
H  
I  
  
S  
I  
G  
M  
A  
  
A  
L  
P  
H  
A**



CHARLES REYNOLDS  
*President*

The purpose of Phi Sigma Alpha is:

To promote ideals of intellectual achievement through the pursuit of truth.

To establish a perpetual fellowship.

To elect into our brotherhood men of good character and outstanding leadership who will work with the interests of our institution at heart, and who will promote in any way possible those things which will be to the advantage and advancement of our college.



FLETCHER DALEY  
*Treasurer*



CONRAD ROUTH  
*Vice-President*



DR. CARL MAULSHAGEN  
*Faculty Advisor*



WALTER FREEMAN  
*Secretary*





EVELYN MATHIS  
*Sponsor*

EMORY ADAMS  
LAMAR BECKWITH  
NEWTON BURKE



CHARLES BUTT  
W. E. CAMP  
HARRY COATS  
JERRY HASTINGS



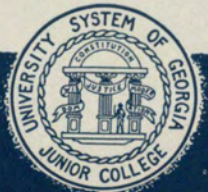
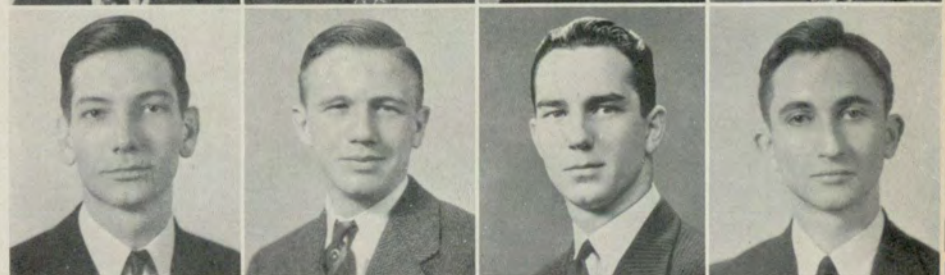
BEN HUIET  
GRAHAM MOBLEY  
JARVIS MURRAY  
BARON ROBERTS



JOHN ROBERTS  
JOHN SIMPSON  
DWIGHT SMITH  
JOHN VAN FLEET



BILL SUTTLES  
T. J. WEATHERLY  
W. C. WINFREE  
WALLACE WHITE





**G  
A  
T  
E  
W  
A  
Y  
S  
T  
A  
F  
F**



EVA ROB CHESHIRE  
*Editor*

In these pages the GATEWAY staff has striven to present the activities of the student body of 1939-40. The time and effort put into the book have but one objective, to publish an annual exemplifying the spirit of the college.

W. E. CAMP  
*Art Editor*



JAMES BAGGOTT  
*Business Manager*



ANN WALKER  
*Circulation Manager*



BETTYE BRISENDINE  
*Assistant Editor*





MR. ERNEST H. EMORY  
*Faculty Advisor*

ART STAFF

H. LIVINGSTON

BARON ROBERTS  
*Cover Designer*

W. WHITE



EDITORIAL STAFF

M. L. MERRIMAN

G. MOBLEY

C. ROUTH

D. G. SMITH

E. WAGES



BUSINESS STAFF

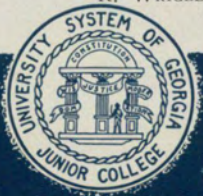
LOUISE LINDSEY  
*Advertising Manager*

F. DALEY

L. ROACH

B. SUTTLES

R. WRIGLEY





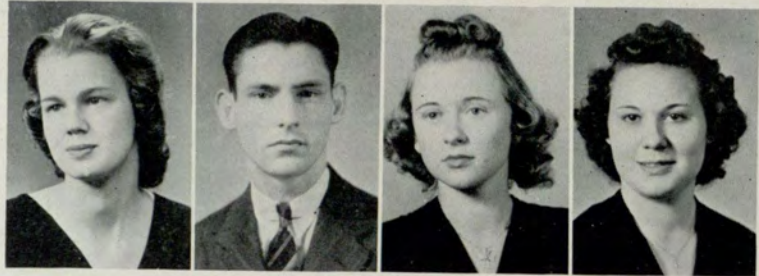


SHERWOOD BROOME  
*Editor*



DR. ROUTH  
DR. SPARKS  
*Faculty Advisors*

MAXINE BROCK    BOYD UPCHURCH    LOUISE LINDSEY    FRANCES GUNTER



*Assistant Business Managers*

MARTHA COWART    ROSE O'QUINN    PEGGY WATKINS

*Assistant Editors*

JAMES BAGGOTT    LILLIAN DURLING    BETH HERZOG  
JACK LEVY    JACK PLAMPIN    EUGENIA REDFERN    BILL SARTAIN



BILL SUTTLES  
*Editor*  
DR. ROUTH  
*Faculty Advisor*





SARAH BROWNE  
*President*

DOT BAUGH  
*Vice-President*

ANN MAGINSKY  
*Publicity Chairman*

CORINNA AIKENS  
*Scrap Book Chairman*

MISS ANNIE TERRELL  
*Faculty Advisor*

For the year 1939-1940 the Home Economics Club has undertaken to dress a little girl from the Sheltering Arms Nursery. The club has clothed her and fixed her Christmas and Easter things.

H  
O  
M  
E  
E  
C  
O  
N  
O  
M  
I  
C  
S



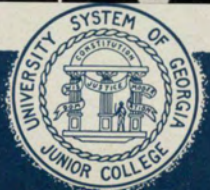
B. BRISENDINE  
D. CARLTON  
M. GODWIN  
N. JONES



A. KERN  
E. NELMS  
S. PARRISH  
D. PIERCE



V. ROBERTS  
L. RAWLS  
N. SNOW  
H. STOLLARD  
E. WATSON





# S T A G E C R A F T E R S



W. E. CAMP  
*President*

The Stage Crafters Club was organized in 1937. Its aims are, 1—To develop poise, 2—To encourage good diction, and 3—To promote the appreciation of dramatic art by the presentation of student plays.



BILL SARTAIN  
*Business Manager*



MARGARITE ROGERS  
*Secretary*



GRIFFIN CARMICHAEL  
*Stage Manager*



MRS. A. D. GREGORY  
*Faculty Advisor*







"Ladies Alone"



"The Trysting Place"



L. BECKWITH  
 D. BERRY  
 F. BORING  
 D. BROWN  
 M. COWART



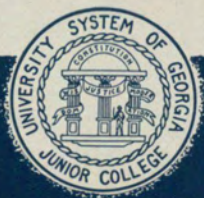
I. FERGUSON  
 B. FRANKS  
 B. HERZOG  
 C. KING  
 M. LOWE



L. McMICHAEL  
 R. O'QUINN  
 J. PLAMPIN  
 J. SISK  
 B. STOCKBRIDGE



A. WALKER  
 D. WARREN  
 P. WATKINS  
 E. WATSON  
 W. WHITE





## GLEE CLUB



DORIS BERRY  
*President*

EARLINE CHESNEY  
*Vice-President*

BILLIE ASTIN  
*Librarian*



I. FERGUSON

E. HARRALSON



P. HEAD

M. N. HOLLAND

H. SEAVER

E. WAGES

E. WARLICK



F. GUNTER  
D. PIERCE

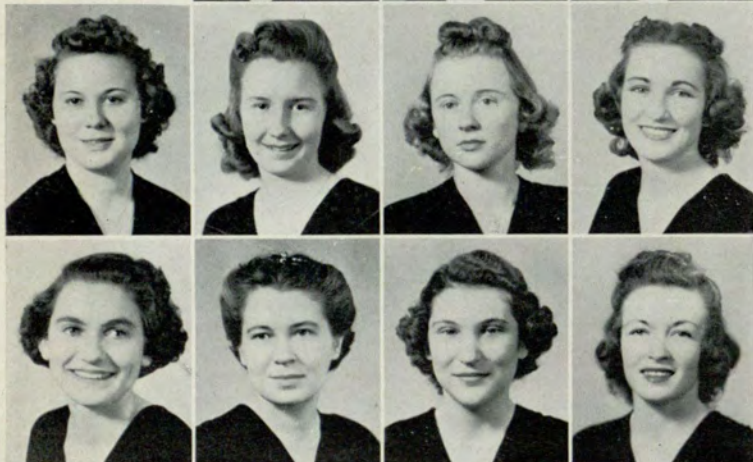
R. DOUGHERTY  
L. KILPATRICK  
J. SISK

B. FRANKS  
L. LINDSEY  
E. WAGES

P. GLACCUM  
H. MORGAN  
H. WILKIE



NINETTE PAYNE  
*President*



MARGUERITE ROGERS  
*Vice-President*

LAVINIA PARTEE  
*Secretary-Treasurer*

## RIDING CLUB



M  
E  
N  
T  
A  
L  
T  
E  
L  
E  
P  
A  
T  
H  
Y

A group of students interested in mental telepathy and in experiments concerning this subject, in the fall of 1939 formed the Junior College Mental Telepathy Club. The club members have attempted a number of experiments in mental telepathy in the college.



BERNEVA RUSH  
*President*



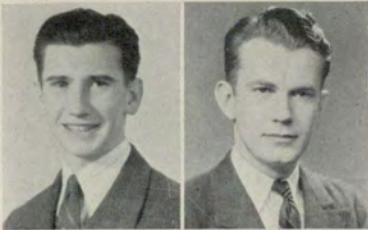
WALTER FREEMAN  
*Vice-President*



BETTY SUTHERLAND  
*Secretary*



ANN WALKER  
*Treasurer*



J. BAGGOTT  
C. BUTT



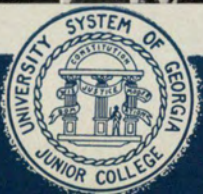
W. E. CAMP  
E. R. CHESHIRE  
F. DALEY  
E. HARRALSON



J. HASTINGS  
J. IRWIN  
L. LINDSEY  
G. MOBLEY  
J. MURRAY



C. REYNOLDS  
J. ROBERTS  
V. ROBERTS  
E. WAGES  
D. WARREN

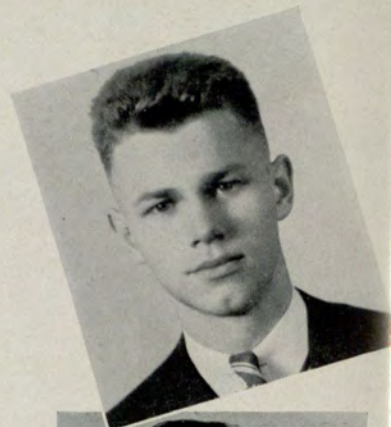




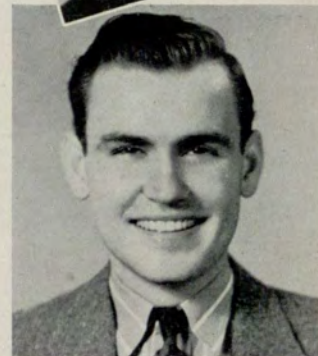
# TYTHENEAN SOCIETY



BILL SUTTLES  
*President*



V. E. ADAMS  
*Vice-President*



HARVEY LIVINGSTON  
*Secretary and Treasurer*

Tythenean Society (a telescopic arrangement of the words Tyro and Demosthenes which means "amateur speaker") has as its objectives: Improvement of speech, development of ideals, extension and dissemination of knowledge, and the formation of friendships. The society is in its first year. It was organized with thirty Junior College men students and four members of the faculty.

The program for this year included semi-monthly meetings, which have been extended to include one dinner meeting, one banquet with after-dinner speeches by all members, and one outing at Indian Creek Lodge.



*Faculty Advisors*

MR. BROWN

MR. EMORY

MR. MCCLELLAN

DR. ROUTH



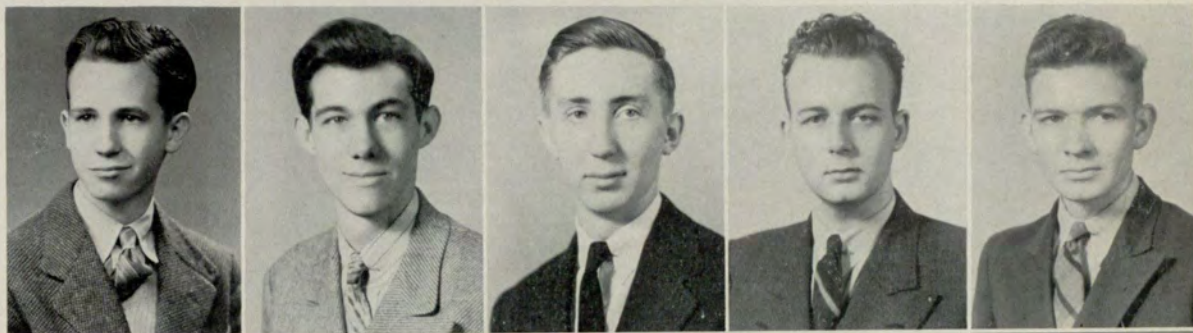


J. BAGGOTT  
 F. BORING  
 S. BROOME  
 W. E. BURKE

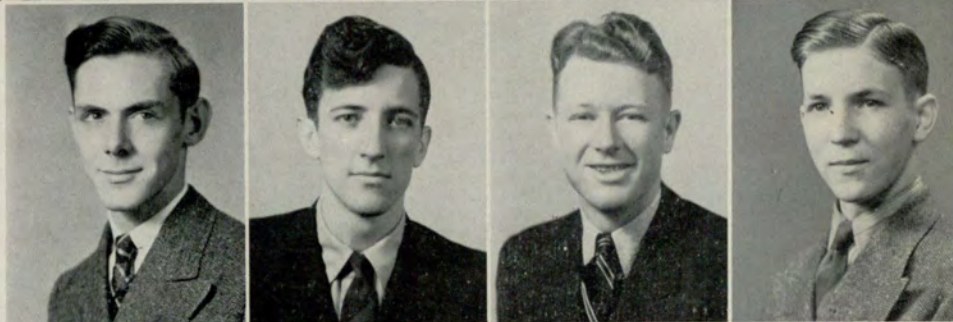


C. BUTT  
 W. E. CAMP  
 G. CARMICHAEL  
 H. COATS

T. COFFEE  
 F. DALEY  
 W. FREEMAN  
 W. R. HAMMOND  
 J. IRWIN



G. MOBLEY  
 J. MURRAY  
 C. REYNOLDS  
 B. ROWE



B. SARTAIN  
 J. SIMPSON  
 B. UPCHURCH  
 T. J. WEATHERLY





# S I G M A P I A L P H A

The Sigma Pi Alpha was organized in 1937. It is composed of the 15% of the student body who have the highest scholastic average. The scholastic requirements are: an average of B both for the current quarter, and for the grand average.

Keys are awarded to those members who are elected to Sigma Pi Alpha for four consecutive quarters, and who have been active in school affairs. Those receiving keys for the year 1940 are Ruby Adams, Griffin Carmichael, Eva Rob Cheshire, and W. R. Hammond.



BILL SUTTLES  
*President*



MARION LOWE  
*Vice-President*



GRIFFIN CARMICHAEL  
*Secretary*



DR. WALKER  
*Sponsor*





DR. ROUTH  
*Honorary Member*

E. ADAMS

R. ADAMS

J. BAGGOTT



M. A. BASS

O. BURNETT

V. CHASTAIN

E. R. CHESHIRE

I. FERGUSON



B. FRANKS

J. GINGRICH

W. R. HAMMOND

A. B. HENRY

B. HERZOG



E. LOVELACE

M. L. MERRIMAN

B. MITCHELL

S. MOSES

R. O'QUINN



J. PLAMPIN

L. RAWLS

E. REDFERN

L. ROACH

N. SNOW



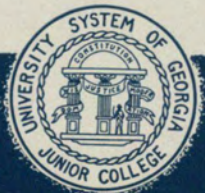
B. SUTHERLAND

E. WATSON

M. H. WELCH

R. WILLIAMS

L. WILLOUGHBY





## BAPTIST STUDENT UNION



DOROTHY GRACE SMITH  
*President*

The Baptist Student Union is the connecting link between the church and the school for the student. It serves to promote religious growth on the campus for Baptist students in the schools and colleges of the nation.



MARION LOWE  
*Third Vice-President*



BILL SUTTLES  
*First Vice-President*



ROBERTA SPRATLIN  
*Secretary and Treasurer*



GERALDINE CAMP  
*Second Vice-President*



LEILA KILPATRICK  
*Publicity*



F. M. ARNOLD

B. ASTIN

J. BAGGOTT

L. BALDWIN



S. BROOME

A. CHANDLER

V. CHASTAIN

M. COWART

F. DALEY



D. DOSTER

B. FRANKS

H. GIBBY

F. GUNTER

O. HUMBER



H. LIVINGSTON

G. MOBLEY

S. MOSES

R. O'QUINN

S. PARRISH



L. PARTEE

J. PLAMPIN

J. ROBERTS

M. ROGERS

L. ROGERS



R. PRUITT

J. SMITH

N. SNOW

B. STOCKBRIDGE

E. WAGES



E. WARLICK

D. WARREN

T. WEATHERLY

E. WATSON

M. H. WELCH





# W E S L E Y F O U N D A T I O N

The Wesley Foundation was organized to promote a closer union between the church, the home and the school, and to make the student feel that Christ is present in our every-day life and work.



BETTYE BRISENDINE  
*President*



MAXINE BROCK  
*Vice-President*

MARGARET A. WARD  
*Treasurer*

DR. WALKER  
*Faculty Advisor*

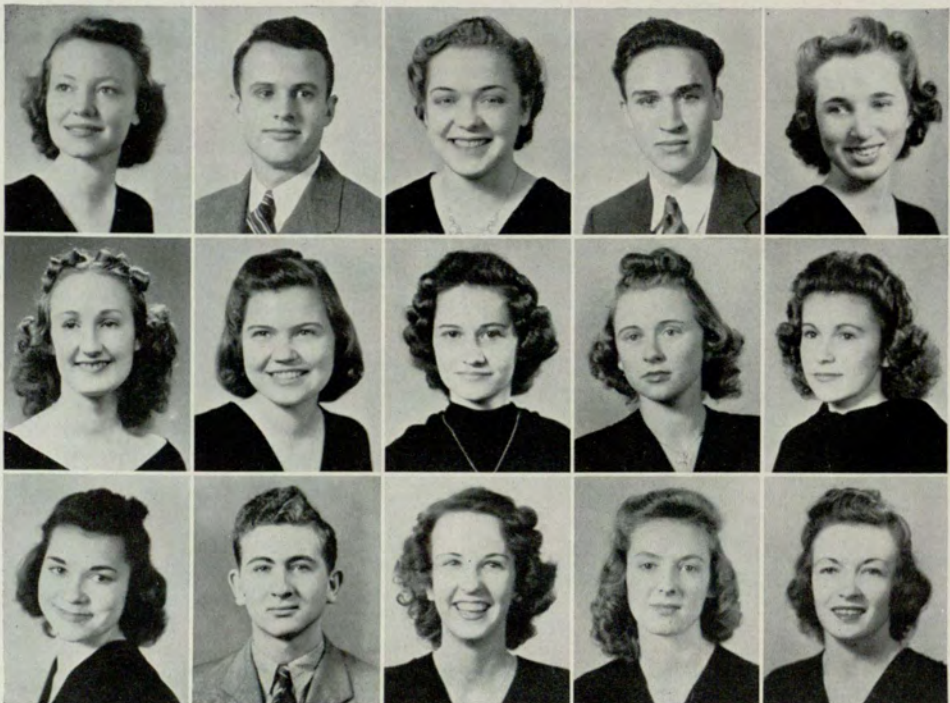
C. AIKENS  
E. HARRIS  
F. PURSELL

B. BAKER  
A. HENRY  
B. SARTAIN

D. BERRY  
M. HOLLAND  
M. THREADGILL

W. E. BURKE  
L. LINDSEY  
A. WALKER

I. FERGUSON  
E. McDONALD  
H. WILKIE





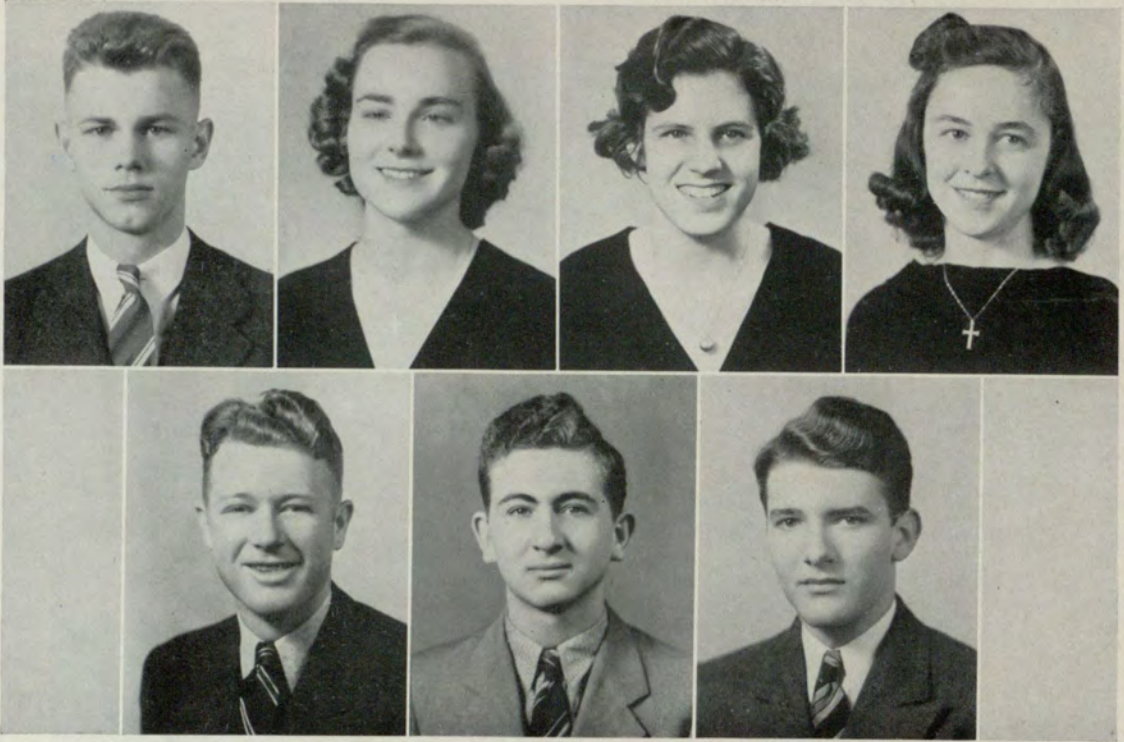
S  
U  
P  
E  
R  
L  
A  
T  
I  
V  
E  
S



HARRIETT WILKIE  
*Miss Junior College*  
*Most Popular Girl*  
*Most Representative Girl*

BILL SUTTLES  
*Mr. Junior College*  
*Wittiest*  
*Most Representative Boy*





EMORY ADAMS  
*Most Intellectual Boy*

RUBY ADAMS  
*Most Intellectual Girl*

ANN ASHURST  
*Most Athletic Girl*

PEGGY PAIR  
*Most Attractive Girl*

CHARLES REYNOLDS  
*Most Popular Boy*  
*Most Athletic Boy*

BILL SARTAIN  
*Best Sport*

JOHN VAN FLEET  
*Most Handsome Boy*





# LIFE



DURHAM: "I WANT GIVE UP!"

JUNE 1940



BOARD OF REGENTS

# UNIVERSITY SYSTEM OF GEORGIA

Has enlarged Atlanta's educational facilities  
for Atlanta Graduates

---

You may enter the Junior College for day classes  
or the  
Evening College for classes after business hours

---

## UNIVERSITY SYSTEM CENTER

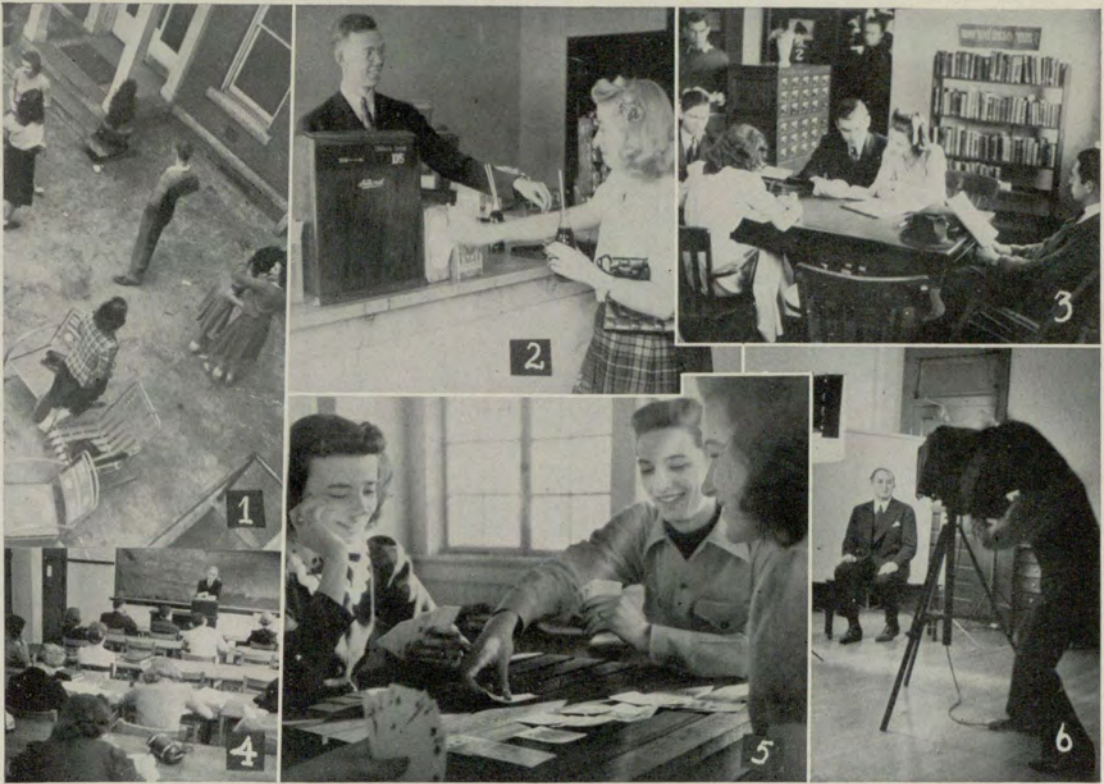
162 Luckie Street, N. W.

ATLANTA

GEORGIA

*50 College faculty members, 2100 students*





1. What'cher lookin' at Buster? . . . 2. Is Mildred fixing to wipe off that inevitable Broome grin? . . . 3. Marie, saving that chair for Ed? . . . 4. Dr. Routh and flock. . . 5. Girls, don't look so smug. W. E. just played the wrong card. . . 6. Tread easy, Doctor.

# BOOKSTORE

## ATLANTA JUNIOR COLLEGE

TEXT BOOKS  
SUPPLIES

FOUNTAIN PENS  
COLLEGE OUTLINES

PHOTO-ALBUMS  
CLIP-BOARDS  
STICKERS  
\* PENNANTS

PLACE YOUR ORDERS HERE FOR "BEST SELLERS" OR  
ANY OTHER BOOK IN PRINT.





1. King—prohibitionist. . . 2. Willie used to live here. . . 3. Hands across the table. . . 4. Careful Lindsey, horses don't like to be kicked either. . . 5. Why Doctor, don't point. It's impolite. . . 6. No, your photog didn't get run over.

B O W L . . .

The Right Way  
at

**BLICK'S**

4 CONVENIENT CENTERS

**BOWLING PALACE**

Briarcliff Plaza

**LUCKY STRIKE**

671 Peachtree Street

**KING PIN**

840 Gordon Street

**\*BOWLING CENTER**

Top Floor Belle Isle Garage

(\*Largest One-floor Alley in the World)

100 — SANCTIONED ALLEYS — 100

Now the favorite sport of Atlantians

. . . bowl regularly for competition,  
fun and health.

*The South's Largest  
Department  
Store*

of

HOME  
FURNISHINGS

**STERCHI'S**



1. And the snows came. . . 2. Now Harold, don't do anything rash. . . 3. Sorry, Martha, you missed. . . 4. What's McCoy got that gets 'em. . . 5. Jack, we're going to sing—not take setting-up exercises. . . 6. What! Another one. . . 7. Keep your feet dry Al, or you might get bit. . . 8. Now you know why Dr. Sparks was the last to leave (it was empty). . . 9. Cat Club. . . 10. Way back in 1939 A.D.—yes, it was cold. Ask Evelyn. . . 11. A hit—now who could Mobley ask mad at.



# RIALTO

Corner Forsyth and Luckie Sts.  
ATLANTA, GEORGIA

Home of . . .

# COLUMBIA

Smash-hit Pictures and Outstanding  
Productions from Other Major Producing  
Companies.

## KRISPY KREME

GLAZED DOUGHNUTS  
*Different - Tasty - Satisfying*

### Krispy Kreme Doughnut Shop

451 Ponce de Leon Ave. Phone VE. 9241  
ATLANTA, GA.



1. Boys, boys, not so rough. There are plenty to go round. . .  
2. Wilkie and date. . . 3. Marie, next time tell your boy friend to  
let us in on the joke. . . 4. Harriet seems to be having a swell time  
—that man of her dreams—maybe.



1. It's Lena, boys, she's about to make another "hit." . . 2. Girls  
will have their little fun. Would Dr. Campbell say they were reverting  
to form? . . 3. Say, don't let Dr. Hollingsworth see you on the wet  
ground barefooted—remember ground itch. . . 4. Woman suffrage—a  
woman can do anything a man can do. . . 5. Pretzel. . . 6. Oh, T. J.,  
your tie's undone. . . 7. Careful, Fletcher, don't hit the photog.

## Photography

by

THE COLLEGE ANNUAL DIVISION  
of  
THE WHITEHALL STUDIOS  
ATLANTA, GA.

*For Additional Portraits, Write Us Direct*

FOR EXTRA PEP AND ENERGY

Drink

**ARISTOCRAT MILK**

It's delicious and healthful  
for that between class snack

**ARISTOCRAT**

DAIRY PRODUCTS COMPANY

MAin 3453

165 Haynes St.





1. It really runs, kids. . . 2. We bet it doesn't look this clean in the morning. . . 3. Tch! Tch! Mrs. Trotter, wait your turn. . . 4. Dearest Miss Julia.

Drink  
**Coca-Cola**  
 Delicious and Refreshing



Pure refreshment





1. Gosh girls, don't be frightened—it's only a photographer. . . 2. Oh boy! Give me my boots and saddle. . . 3. Doesn't Ninette look cute. . . 4. Savannah, the morning after the night before. . . 5. Girls! Don't be selfish. If you must hold hands, we'll help. . . 6. Sigma Pi Alpha honorites (Rocheille, I'm really sorry I spilled that cocoa). . . 7. Anybody want to bet it isn't wet. . . 8. It was a hard fight but Lindsey won. . . 9. We wonder why Gertie is so happy. . . 10. Why Strickland! Didn't you have any breakfast?

*Compliments of . . .*

**JIMMY HOLMES**  
**THE FOX TROT STUDIOS**  
 of Popular Piano Music  
 WALnut 8257

**R. A. CHRISTOPHER**

King of Recorded  
**SWING**

*If you swing give Chris a ring*

WALnut 4289

*Compliments  
 of*

**JERSEY ICE CREAM COMPANY**  
 ATLANTA, GEORGIA





MAin 5036

PARAMOUNT SIGN CO.

SIGNS

151½ Nassau St., N. W.

GEO. H. SHAFFER

UNIVERSITY GRILL

"Across from the School"

5c

WIENERS - HAMBURGERS - COFFEE

*Compliments*

*of*

GORDON'S

Fresh

POTATO CHIPS

JOHN D. HOFFMAN

*Teacher of Singing*

Recording and Practice Studios  
*for Students*

305 Haynes Building

2½ Auburn Avenue — Corner Peachtree  
JACKSON 0674





## SUCCESSFUL ANNUALS

Require the services of experienced and expert craftsmen, trained in every detail of the processes of creating • planning layout and design • typesetting • printing lithographing and binding... Throughout half a century this company has pioneered in the production of the highest type of printing... Our services include a special college annual sales and service organization... Abundant equipment • modern and complete... Prices representing maximum in value



**FOOTE & DAVIES**

PRINTING • LITHOGRAPHING • ENGRAVING

ATLANTA



DATE DUE

XDEC 3 1999 XXXXX

XXX 3 1999 XXXXX

BRODART

Cat. No. 23-221



GEORGIA STATE UNIVERSITY



3 0785 00576 4600



