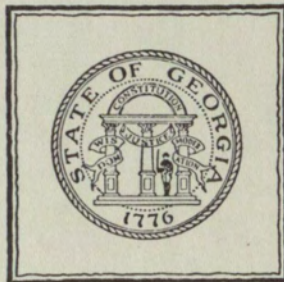


GATEWAY

1941



LD 1965
.G37
1941
c.2



University System
of Georgia
GEORGIA STATE COLLEGE
LIBRARY



MINOR
ATLANTA

THE 1941 GATEWAY

Published by the
STUDENT BODY
of the

ATLANTA JUNIOR COLLEGE

BETTIE BRISENDINE
Editor

MARJORIE STANFIEL
Business Manager



To Dr. Elmer Campbell whose friendly enthusiasm inspires his students, makes his science live for us, and arouses keen feelings of affection in everyone, this book is dedicated.



DEDICATION



A yearbook introduction—one of the hundreds ground from the pens of editors—labored and stilted—thin-worn with their phrases asking for appreciation of effort—hackneyed and stereotyped with hints for compliments. I dislike them thoroughly, and if you feel about them as I do, you'll ignore this completely.

There's little enough to say right here. The yearbook? Oh, yes—well, probably the most remarkable thing about a yearbook is that it ever comes out. Eight months, you'll say is a long time to do the job; all that the staff can answer is, you've probably never tried. Mr. McClellan's office is the only place I know of that has housed as many worried wrinkles per square inch of forehead as has the GATEWAY work room (art room to you). But here's the book in spite of our cares. If you have complaints to leave, the staff's address after the date of publication will be—Okefenokee Swamps—you can reach us there.

THE EDITOR.

173508

FOREWORD

FACULTY



GEORGE M. SPARKS, A.B., M.A., LL.D.
Mercer University; Oxford, England
DIRECTOR OF SCHOOL



T. M. McCLELLAN, B.S.C., M.S.C.
Georgia School of Technology; New York University
REGISTRAR



MRS. NELL HAMILTON TROTTER, A.B., M.A.
University of Arkansas; University of Wisconsin
DEAN OF WOMEN



CARL BROWN, B.S.E.E., B.C.S.
Georgia School of Technology; University System of
Georgia Evening College



M. H. BRYAN, A.B., A.M.
University of Illinois



ELMER G. CAMPBELL, A.B., M.S., Ph.D.
Hiram College of Ohio; Purdue University; University
of Chicago



CLAIRE CHRISTIAN, B.C.S.
University System of Georgia Evening College; Emory
University



R. A. CHRISTOPHER, B.S.C.
University of Georgia

FACULTY



ERNEST HENRY EMORY, B.A., B.S.
Mercer University; Georgia School of Technology



MADELINE HOSMER, A.B.
Washington University; St. Louis School of Fine Arts



MRS. HOLLINGSWORTH, B.S., M.S.
Washington University; Columbia



R. R. HOLLINGSWORTH, A.B., M.A., Ph.D.
University of Washington; Columbia University; University of North Carolina



HAL HULSEY, A.B., M.A.
University of Georgia; University System of Georgia
Evening College; Emory University



PICKETT HYNES, B.C.S.
Georgia Evening College; University of Georgia



V. V. LAVROFF, B.S.C., M.A.
Harbin, China; Georgia School of Technology; Emory
University



WILLIAM P. LAYTON, B.Ph.
Emory University

FACULTY



JOSEPH N. LeCONTE, A.B., M.S., Ph.D.
Emory University; University of North Carolina



CARL MAULESHAGEN, A.B., M.A., Ph.D.
University of Tennessee; University of Chicago; University of Minnesota



G. H. RICHTER, A.B., A.B.L.S.
University of Georgia; Emory University



JAMES E. ROUTH, A.B., Ph.D.
Johns Hopkins University



MRS. LINNIE TALLANT, R.N.

EUGENIA BRIDGE, A.B.
Agnes Scott



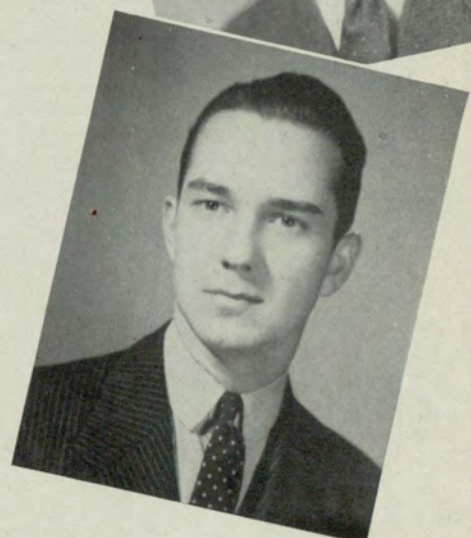
MRS. A. J. WALKER, A.B., M.A., Ph.D.
Hollins Institute; Radcliffe College; Harvard University





"A gateway leads in both directions,
And must be left as well as entered by."

- | | |
|-------------------------|----------------|
| JARVIS MURRAY | President |
| PEGGY PAIR | Vice-President |
| JOHN BEALL | Secretary |
| W. C. WINFREE | Treasurer |



SOPHOMORES



EMORY ADAMS

Interfraternity Council '39-'40, '40-'41; Phi Sigma Alpha '39-'40, '40-'41, President; Sigma Pi Alpha '39-'40, '40-'41, Key; Most Intellectual '39-'40, '40-'41, Superlatives; Tythenian '39-'40, '40-'41; Stagecrafters '40-'41.

ANN ASHURST

Winner Spring Tennis Tournament '38-'39; Basketball Varsity '39-'40; Winner Track Meet '39-'40; Most Athletic Girl '39-'40, Superlatives; Bowling Champion Cup '39-'40, '40-'41; **Junior Collegiate** '40-'41, Sports Editor.

CHARLOTTE BABB

Chi Rho Sigma '40-'41, Treasurer; Sigma Pi Alpha '41.

BRUCE BALDRIDGE



SOPHOMORES



KATHLEEN BAKER



MARY BARBER



JOHN BEALL

Junior Collegiate '40-'41, Editor; **Flambo** '40-'41; Stagecrafters '40-'41, President; Art Club '40-'41; Radio Guild '40-'41; Debating Council '40-'41; Interfraternity Council '40-'41; Student Council '40-'41; Phi Sigma Alpha '39-'40, '40-'41, Vice-President.



BILLIE BENNETT

Stagecrafters '40-'41; Delta Alpha Delta '40-'41.



DORIS BERRY

Interfraternity Council '39-'40, '40-'41; Gamma Kappa '39-'40, '40-'41, Vice-President; Stagecrafters '39-'40; Glee Club '39-'40, '40-'41, President; Wesley Foundation '39-'40.

BETTYE BRISENDINE

GATEWAY '39-'40 Assistant Editor, '40-'41 Editor; Interfraternity Council '39-'40, '40-'41; Chi Rho Sigma '39-'40, '40-'41; Most Dependable '40-'41, Superlatives; Wesley Foundation '39-'40, President; Home Economics '39-'40; Cat Club '40-'41.

FRED BORING

Phi Sigma Alpha '40-'41; Stagecrafters '39-'40; Tythenian Society '39-'40, '40-'41, Secretary and Treasurer.

MARIAN BROWNE

Stagecrafters '40-'41; Delta Alpha Delta '40-'41; Radio Guild '40-'41; Riding Club '41; Home Economics Club '40-'41; GATEWAY Staff '40-'41.



SOPHOMORES



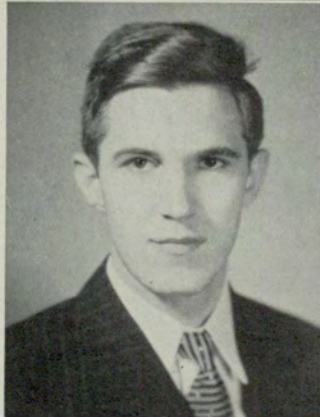
ODIEL BURNETT
Sigma Pi Alpha '39-'40.



NEWTON BURKE
Phi Sigma Alpha '40-'41.



GAIL CAIN
Cat Club '40-'41; Baptist Student Union '40-'41; Art Club '40-'41, Treasurer; GATEWAY Staff '40-'41; Chi Rho Sigma '40-'41; Interfraternity Council '40-'41; Wittiest '40-'41, Superlatives.



GUYTON CHRISTOPHER
Tythenian Society '40-'41.



MARGARET CLARY

Chi Rho Sigma '39-'40, '40-'41.

LUKE DARNELL

Phi Sigma Alpha '39-'40, '40-'41, Treasurer;
Tythenian Society '39-'40, '40-'41; Student
Council '40-'41.

THOMAS COFFEE

Tythenian Society '39-'40, '40-'41.

JANE DEMPSEY

Delta Alpha Delta '40-'41, Sergeant-at-Arms;
Debating Council '40-'41.





MARY DOZIER
Chi Rho Sigma '39-'40, '40-'41.



DOROTHY ENGE
Junior Collegiate '40-'41; Flambo '40-'41.



DOROTHY ESTES
Delta Alpha Delta '39-'40, '40-'41, Treasurer;
Home Economics Club '40-'41; Debating Council '40-'41.



IDELL FERGUSON
Gamma Kappa '39-'40, '40-'41, Secretary;
Stagecrafters '39-'40; Glee Club '39-'40, '40-'41;
Sigma Pi Alpha '39-'40; Wesley Foundation '39-'40.



A. P. FORD

Tythenian '39-'40, '40-'41.

WALTER FREEMAN

Basketball Varsity Team '39-'40; Phi Sigma Alpha, Secretary '39-'40, '40-'41; Tythenian '39-'40.

BEVERLY FRANKS

D. A. D. '39-'40, '40-'41; Stagecrafters '39-'40, '40-'41; Riding Club '39-'40; Sigma Pi Alpha '39-'40, '40-'41, Key; B. S. U. '39-'40, '40-'41; **Flambo** '40-'41.

PAT GLACCUM

Riding Club '39-'40.



SOPHOMORES



MARIE GODWIN

Home Economics Club '39-'40, President '40-'41; Gamma Kappa '40-'41; Interfraternity Council '40-'41.



LADY MARY GRIFFIN



JOHN B. GUERARD

Phi Sigma Alpha '40-'41; Tythenian.



MILDRED HARRIS

Interfraternity Council '40-'41; Chi Rho Sigma '39-'40, Scribe '40-'41; Most Attractive '40-'41, Superlatives; GATEWAY '40-'41; Cat Club '40-'41; B. S. U. '40-'41; Art Club, Vice-President '40-'41.



MARY HILL

Chi Rho Sigma '40-'41.

BEN T. HUIET, JR.

Phi Sigma Alpha '39-'40, '40-'41; Tythenian
'39-'40, '40-'41; Student Council '40-'41.

CECIL HUGHES

Phi Sigma Alpha '40-'41.

ORVILLE HUMBER

Baptist Student Union '39-'40, '40-'41; Tythenian
'39-'40, '40-'41; Debating Council '39-'40.





MARTHA JORDAN
Chi Rho Sigma, '40-'41.



JACK KRASNER
Debating Council '40-'41; Sigma Pi Alpha, '39-
'40; Basketball Varsity '39-'40; Stagecrafters
'39-'40.



ANN KIDD
Gamma Kappa '40-'41, Treasurer; Episcopal
Union '39-'40, President '40-'41; Interfrater-
nity Council '40-'41.



JOY LENNEY
Chi Rho Sigma, '40-'41; Glee Club, '38-'39.



LOUISE LINDSEY

Chi Rho Sigma '39-'40, '40-'41; **Junior Collegiate** '39-'40, '40-'41; Riding Club '39-'40; Wesley Foundation '39-'40; Cat Club '40-'41.

ANNA RUTH LYLE

Stagecrafters '40-'41; Sigma Pi Alpha '40-'41; Presbyterian Student Union '40-'41; Home Economics Club '39-'40, '40-'41.

HARVEY LIVINGSTON

President Student Body '40-'41; Interfraternity Council '39-'40; **Flambo** '39-'40, Assistant Editor, '40-'41, Editor; Tythenian '39-'40, Secretary and Treasurer '40-'41; Baptist Student Union '39-'40, '40-'41, Publicity Director; Most Representative '40-'41, Superlatives.

LEONA McMICHAEL

Delta Alpha Delta '39-'40, '40-'41; Stagecrafters '39-'40.



SOPHOMORES



MICKY MILLER

Chi Rho Sigma '40-'41.



SARAH MOSES

Chi Rho Sigma '39-'40, '40-'41; Baptist Student Union '39-'40, '40-'41, President; Most Intellectual '40-'41, Superlatives; Sigma Pi Alpha '39-'40, '40-'41, Key; Interfraternity Council '40-'41.



JARVIS MURRAY

Phi Sigma Alpha '39-'40, '40-'41, Secretary; President Sophomore Class '40-'41; Mr. Junior College '40-'41, Superlatives; Tythenian Society '39-'40.



ELSIE NELMS

Chi Rho Sigma '39-'40, '40-'41; Home Economics Club '39-'40.



HELEN O'BRIEN

Student Council '39-'40; Chi Rho Sigma '40-'41; GATEWAY Staff '40-'41; Presbyterian Student Union '40-'41; Interfraternity Council '40-'41.

PEGGY GAY PAIR

Vice-President Freshman Class '39-'40; Vice-President Sophomore Class '40-'41; Interfraternity Council '39-'40, '40-'41; Student Council '39-'40; Chi Rho Sigma '39-'40, '40-'41; Most Attractive '39-'40, Most Representative '40-'41, Superlatives; Cat Club '40-'41.

ROSE O'QUINN

Interfraternity Council '40-'41; Debating Council '39-'40, '40-'41; Radio Guild '40-'41; Delta Alpha Delta '39-'40, '40-'41, Scribe; **Flambo** '39-'40, '40-'41; Stagecrafters '39-'40, '40-'41, Secretary; Sigma Pi Alpha '39-'40; Baptist Student Union '39-'40, '40-'41; **Junior Collegiate** '40-'41.

RUTH PARKER

Baptist Student Union '40-'41; Home Economics Club '40-'41.



SOPHOMORES



SARA PATTERSON
Baptist Student Union '40-'41.



JACK PLAMPIN
Tythenian '39-'40, '40-'41; Art Club '40-'41;
Flambo '39-'40; Stagecrafters '39-'40, '40-'41,
Treasurer; Debating Council '39-'40, '40-'41;
Sigma Pi Alpha '39-'40, '40-'41, Key; Baptist
Student Union '39-'40; **Junior Collegiate** '40-
'41, Assistant Editor; Radio Guild '40-'41; In-
terfraternity Council '40-'41.



ELIZABETH POOLE
Delta Alpha Delta '40-'41; Radio Guild '40-
'41; Stagecrafters '39-'40, '40-'41; Riding Club
'41.



BETTY PRESCOTT
Junior Collegiate '40-'41.



BETTY RAMSEUR

Delta Alpha Delta, '39-'40, '40-'41.

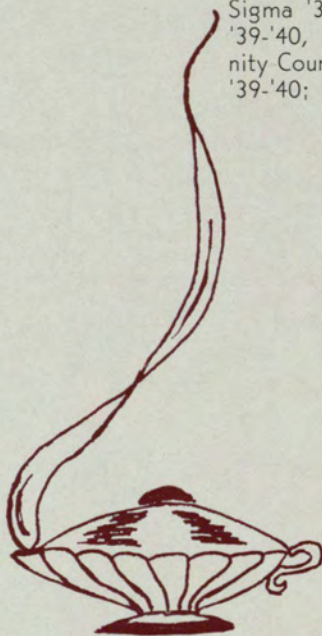
HENRY JENNINGS RAY, JR.

C. M. RAINEY

Tythenian Society '40-41; Debating Council
'40-'41; Stagecrafters '40-'41.

LOUISE ROACH

Secretary Freshman Class '39-'40; Chi Rho
Sigma '39-'40, '40-'41, President; GATEWAY
'39-'40, '40-'41, Assistant Editor; Interfrater-
nity Council '40-'41, President; Sigma Pi Alpha
'39-'40; Miss Junior College '40-'41, Superla-
tives; Cat Club '40-'41.





JOHN "BUSTER" ROBERTS

Vice-President Student Body '40-'41; Phi Sigma
Alpha '39-'40, '40-'41.



WILLIS W. SANDERS

GATEWAY Staff '40-'41.



MILDRED SCOTT

Chi Rho Sigma '40-'41.



HELEN STOLLARD

Interfraternity Council '40-'41; Home Economics Club '39-'40; Gamma Kappa '39-'40, '40-'41, President; Episcopal Union '39-'40, '40-'41, Vice-President.



JUNE STRICKLAND

HELEN SEAVER

Glee Club '39-'40, '40-'41, President; Interfraternity Council '40-'41; Gamma Kappa '40-'41.

ALICE STRICKLER

Home Economics Club '40-'41.

CHARLOTTE SMITH

Delta Alpha Delta '40-'41; Home Economics Club '40-'41.



SOPHOMORES



ELAINE SMITH



JULIET SMITH

Delta Alpha Delta '39-'40, '40-'41, Vice-President; Baptist Student Union '40-'41; May Queen '40-'41; Home Economics Club '40-'41; Interfraternity Council '40-'41.



NELLE SNOW

Sigma Pi Alpha '39-'40; Baptist Student Union '39-'40, '40-'41, Secretary and Treasurer; Home Economics Club '40-'41.



DORIS SULLIVAN

Chi Rho Sigma '39-'40, '40-'41.



BETTY TAYLOR

Junior Collegiate '40-'41; **Flambo** '40-'41, Assistant Editor; Stagecrafters, Vice-President; Delta Alpha Delta '40-'41; Debating Council, President; Sigma Pi Alpha, Key Member; Radio Guild.

JACK TIPTON

Stagecrafters '40-'41.

MARGUERITE THREADGILL

Wesley Foundation '39-'40.

EVELYN WAGES

Chi Rho Sigma '39-'40, '40-'41, Vice-President; GATEWAY '39-'40, '40-'41; Glee Club '39-'40; Riding Club '39-'40; Baptist Student Union '39-'40, '40-'41.



SOPHOMORES



LENA WAGNON

Bowling Champion '39-'40; Chi Rho Sigma '40-'41; Presbyterian Student Union '40-'41; Treasurer Student Body '40-'41; Interfraternity Council '40-'41; Skating Champion '40-'41; Best Sport '40-'41, Superlatives.



DOROTHY WILLARD WARREN

Chi Rho Sigma '39-'40, '40-'41; Stagecrafters '39-'40; Baptist Student Union '39-'40, '40-'41; **Flambo** '40-'41; **Junior Collegiate** '40-'41; Glee Club '40-'41; Art Club '40-'41, Secretary.



ANNE WALKER

Treasurer Sophomore Class '40-'41; Chi Rho Sigma '39-'40, '40-'41; GATEWAY '39-'40, Circulation Manager; Stagecrafters '39-'40; Wesley Foundation '39-'40.



ELEANOR WATSON

Delta Alpha Delta, President '40-'41; Sigma Pi Alpha '39-'40; Home Economics Club, Vice-President '41; B. S. U., First Vice-President '40-'41; Stagecrafters '39-'40, '40-'41; Interfraternity Council '39-'40, '40-'41; Student Council '39-'40.



MARY HILL WELCH

Delta Alpha Delta '39-'40, '40-'41, Pledge Captain; Sigma Pi Alpha '39-'40; Baptist Student Union '39-'40, '40-'41, Third Vice-President; Radio Guild '40-'41; Debating Council '40-'41; Interfraternity Council '40-'41; GATEWAY Staff '40-'41.

LILLIAN WILLOUGHBY

Interfraternity Council '40-'41, Secretary and Treasurer; Student Council '40-'41; Chi Rho Sigma '39-'40, '40-'41, Secretary; Sigma Pi Alpha '39-'40, '40-'41, Key; GATEWAY '40-'41, Art Editor; Cat Club '40-'41; Art Club '40-'41, President; Most Original '40-'41, Superlatives; Baptist Student Union '39-'40, '40-'41.

MARIE WHITE

Chi Rho Sigma '39-'40.

W. C. WINFREE

Phi Sigma Alpha '39-'40, '40-'41; Stagecrafters '40-'41.

WALLACE WHITE

Phi Sigma Alpha '39-'40, '40-'41; GATEWAY '39-'40; Stagecrafters '39-'40; Junior Collegiate '39-'40; Flambo '39-'40.

SADA NELL WILLIAMS

Chi Rho Sigma '39-'40, '40-'41.

EDNA MAE KEENER

Delta Alpha Delta '40-'41; Baptist Student Union '40-'41.

SOPHOMORES

High Points of the Year

Come, dear students, around me here,
 And I'll tell you the points of the J. C. Year.
 Bet'ye Brisendine, a girl of high aim,
 Has made this Yearbook one of fame.
 With undying patience and ever burning hope,
 She gave us this book with which no other could cope
 And Lillian Willoughby, with great knowledge of art,
 Has chipped right in and done her part.
 From brisk September through balmy May,
 Something has happened every day.
 Betty Ramseur, small and frail,
 Has written her third weird gangster tale;
 And Betty Taylor, to follow the rage,
 Dramatized gangsters on our stage.
 Dr. Campbell, hold that pose—
 Where did you get that Cherokee rose?
 Generals and Admirals was Dr. Sparks greeting,
 When in Washington he attended a defense meeting.
 Ads for cigarettes, gum, and snuff—
 Prof. Layton, did you get enough?
 Livingston makes all America look
 When he gives them the Bible as a puzzle book.
 Yes, Uncle Sam called and the boys said "Adieu,"
 For the army then they went to view.
 The belles do beam, and the dudes do prance,
 For they are doing the jitter-bug dance;
 So cock your ear and train your limb,
 It's knock-down season in the gym.
 "Six thousand dollars worth of Coca-Cola please,"
 That's our order—hot or freeze.
 Dr. LeConte to Milledgeville travelled,
 And for the girls some facts unravelled.
 The Junior Collegiate is going jazz;
 Let's hope it doesn't get the razz.
 The fire Marshal came, and he looked a lot,
 Then he said that we were enough red hot.
 The Junior College girls are scandalized,
 For the boys want them standardized.
 Maybe that's why engagements are few;
 Could be the girls are dissatisfied too.
 Like rivers without gaps,
 Are Junior College freshmen without rat caps.
 The regents have willed us the Georgia Junior College—
 Proof that they, too, possess great knowledge.
 The Federal Reserve Bank and Legislature too,
 There told by Tythenians just what they could do.
 The co-eds have gone in for peasant head-gear,
 Is it a case of art or nothing else to wear?
 The girls were caught; the boys did free them;
 If only the "Eye" had failed to see them!
 But faculty, too, looked on them anew,
 And the light of sight was through.
 Ethics and Journalism always conflict;
 And Dr. Routh's rules are pretty strict;
 We swipe an ad, we fake a story,
 And chalk it up to Journalistic glory—
 'Til Dr. Routh makes it look gory.
 Prof. Emory's smile and Prof. Brown's wink
 To many students did friendship link.
 The year was brief, and the days short,
 But each student has played his part.
 May the coming years bring as much fun,
 With a sigh of regret when each year is done.
 Let the halls hold their giggles and the class rooms their mirth;
 For such have they held since the day of their birth.
 And may the Yearbook keep the beauty Bettye has given it;
 And, if possible, may each year enliven it!

SADA NELL WILLIAMS.



WINDY KIMBALL
 President



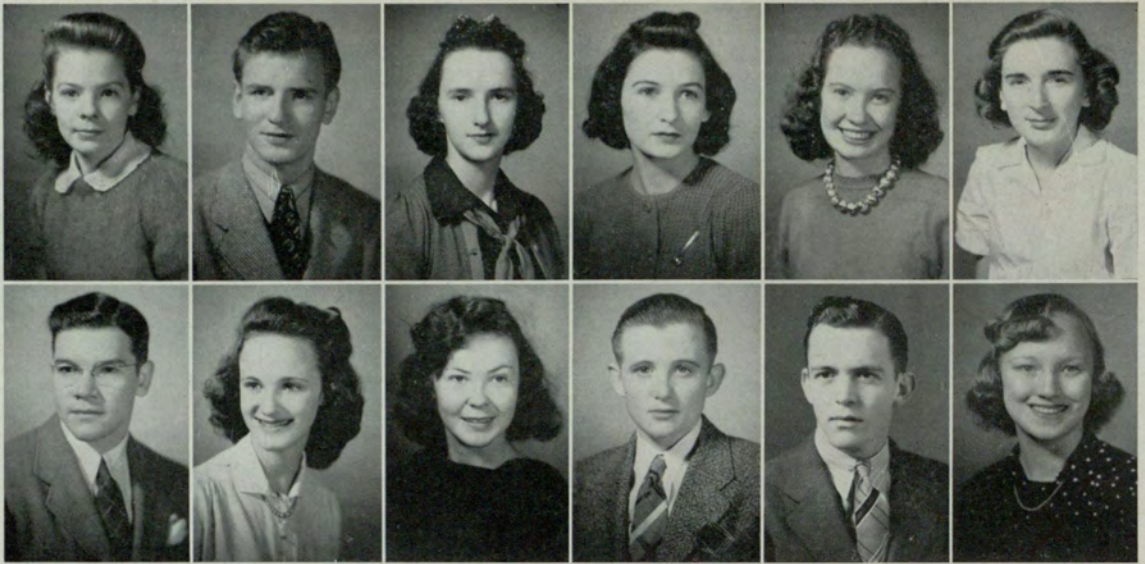
HOPE CHILDS
 Vice-President



BEVERLY ANN WEST
 Secretary



ANN DANIELS
 Treasurer



ELNORA ADAMSON

RAY ALMAND

GLORIA ALLGOOD

ANN ALLEN

LOUISE ALLEN

HENRIETTA BARNETT

GORDON BAILEY

NELL BALDWIN

BETTY BANG

MASON BARBER

FRANK BETTIS

LOU CARLISLE





HOPE CHILDS



BOB CLYATT



EMILIE COLE



FLORENCE COPPEDGE



WILMA COLQUITT



SARAH COTTEN



BYRON COUCH



CLAUDE CROOKS



LOUISE CRUSSELLE



SARAH CROSS



ANN DANIELS



MILTON DANIEL



FRANK DREW

DOT DURDEN

DOROTHY DURLING

MARGIE EATON

EDNA MONTFORD EDWARDS

MARY VIRGINIA EVERETT

BOB FIELDS

MARION FISK

SARA FLORENCE

ANN FRANKLIN

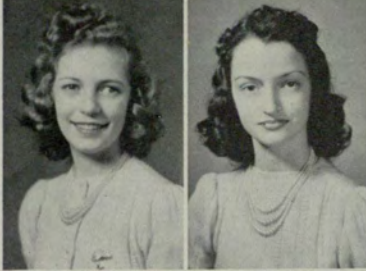
ANNETTE GODBEE

PEGGY GOINGS



GEORGE GRAHAM

BARBARA GRANT



IDA GRIZZELL

VIRGINIA GOODWIN



MARIE HAMMOND

MARY HARRINGTON



MILDRED EVELYN HARRIS

LUCY HICKMAN



NINA HILLSMAN

MARY E. HOLLINGSWORTH



ELEANOR HOSCH

MARJORIE HOVEY



MARTHA HOWELL

PEGGY HUDGINS

JUNE HUNT

FLOY HUTCHESON

MATILDA IVEY

LOIS JACKSON

JEANNE KELLY

CLYDE KIMBALL

MARGIE KINARD

ELEANOR REESE LEWIS

CAROLYN LAMOTTE

MARY LASSITER



BETTY LESTER

CAMILLE LITTON



JACK MARBUT

MILLICENT MATHEWS



FRANCES MAYO

FRANCES MEADERS



JULIA MOBLEY

JACQUELINE MORRIS



ANNA MARIE MOORE

RAY McCAY



MARY EDITH McCOLLUM

LA RUE McDUFFIE



ANN McGRAW

HARRIET McGUIRE

BETTY McINTOSH

MARY NIX

NOUR A. NOUR

BETTY O'KELLY

CALOMIRA PAPAGEORGE

MAXINE PHILLIPS

MARY ELIZABETH PINKARD

ELEANOR LOUISE PORTWOOD

CLAIRE RICHARDSON

FRANCES EARLINE ROBERTS

MILDRED ROBERTSON

PAT SANDERS





MILDRED SAULT

SARAH SCOTT



VIRGINIA SCOTT

FRANCES SCREVEN



HELEN SEARS

ETHEL SHIPP



GLORIA SMITH

FRANCES SPAIN



MARJORIE STANFIEL

MARY JANE THURMAN



ELIZABETH TOMPKINS

PEGGY TUCKER



BEATRICE VITNER

BARBARA WARREN



DOROTHY WATSON

WYNETTE WATTS

HELEN WEILL

BEVERLY ANN WEST

FLORENCE WHITAKER

MARGARET ANN WOMACK

NELL WOMACK

JAMES WOOD

ROBERT WOOD

EMILY WOODALL

BETTY WOOTAN

JEAN WILLBANKS

ANNE WILLIAMS

KATHRYN WITT



FRESHMEN

Gateway to Pleasure



ORGANIZATIONS

INTER-FRATERNITY COUNCIL

The Interfraternity Council is composed of representatives from each Junior College organization for the purpose of binding together all the clubs of the college into a closer and more co-operative relationship, and of regulating social functions given.



LOUISE ROACH
President

WINDY KIMBALL
Vice-President

LILLIAN WILLOUGHBY
Secretary and Treasurer



GAIL CAIN Art Club

MILDRED HARRIS Art Club

SARA MOSES B. S. U.

MARGIE KINARD B. S. U.

MARJORIE STANFIEL Chi Rho Sigma

ROSE O'QUINN Delta Alpha Delta

JULIET SMITH Delta Alpha Delta

BETTY TAYLOR Debating Council

JANE DEMPSEY Debating Council



IDELL FERGUSON Gamma Kappa
DORIS BERRY Gamma Kappa
BETTY BRISENDINE GATEWAY

EVELYN WAGES GATEWAY
HELEN SEAVER Glee Club
GLORIA SMITH Glee Club

HARVEY LIVINGSTON Flambo
MARIE GODWIN Home Economics
ELEANOR WATSON Home Economics

JOHN BEALL Junior Collegiate
EMORY ADAMS Phi Sigma Alpha
BETTY LESTER Radio Guild

GEORGE GRAHAM Radio Guild
HELEN O'BRIEN Presbyterian Union
LENA WAGNON Presbyterian Union

FLORENCE WHITAKER Riding Club
PEGGY GOINGS Riding Club
CHARLOTTE BABB Sigma Pi Alpha

ELANOR HOSCH Stagecrafters
JACK PLAMPIN Stagecrafters
FRED BORING Tythenian



SCHOOL OFFICERS



HARVEY LIVINGSTON
President



BUSTER ROBERTS
Vice-President



ANN WALKER
Secretary



LENA WAGNON
Treasurer

SOPHOMORE OFFICERS



JARVIS MURRAY
President



PEGGY GAY PAIR
Vice-President



JOHN BEALL
Secretary



W. C. WINFREE
Treasurer

FRESHMAN OFFICERS



WINDY KIMBALL
President



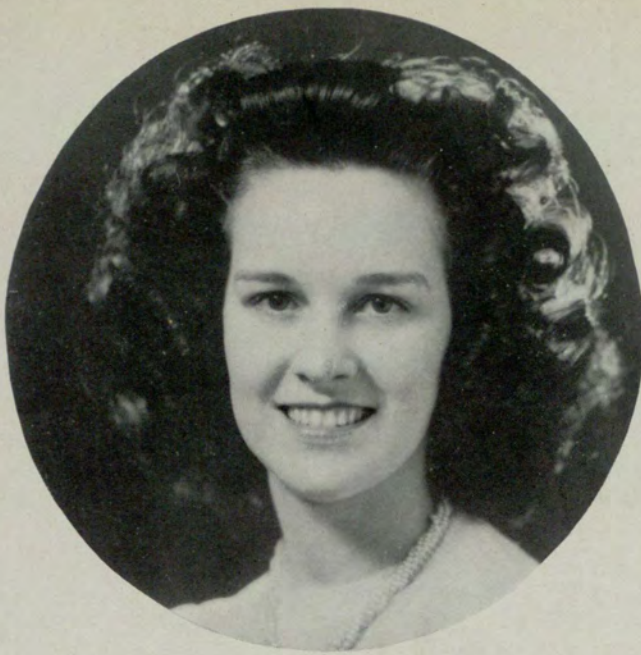
HOPE CHILDS
Vice-President



BEVERLY ANN WEST
Secretary



ANN DANIELS
Treasurer



LOUISE ROACH
President

CHI RHO SIGMA

The Chi Rho Sigma sorority was organized in order to establish a feeling of friendship among its members; to insure trust, faith, and sisterly relationship in one another; and to foster consciousness of school spirit.



DR. MERLE WALKER
Faculty Advisor



EVELYN WAGES
Vice-President



LILLIAN WILLOUGHBY
Secretary



CHARLOTTE BABB
Treasurer



MILDRED HARRIS
Scribe



BETTY BRISENDINE

MARY HILL

MARGIE KINARD

GAIL CAIN

MARY HARRINGTON

ANN KING

MARGARET CLARY

ELEANOR HOSCH

JOY LENNY

MARY DOZIER

MARJORIE HOVEY

BETTY LESTER

ANN FRANKLIN

MATILDA IVY

CAMILLE LITTON

IDA GRIZZELL

MARTHA JORDAN

LOUISE LINDSEY



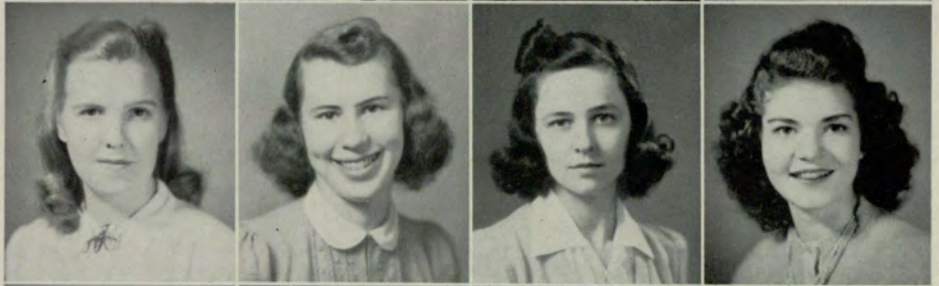
LARUE McDUFFIE
FRANCES MEADOWS
MICKEY MILLER



JACQUELINE MORRIS
SARA MOSES
ELSIE NELMS



HELEN O'BRIEN
BETTY O'KELLY
PEGGY GAY PAIR
CLAIRE RICHARDSON



MILDRED SAULT
MILDRED SCOTT
FRANCES SCREVEN
ETHEL SHIPP



GLORIA SMITH
MARJORIE STANFIEL
DORIS SULLIVAN
LENA WAGNON



ANN WALKER
DOT WARREN
FLORENCE WHITAKER
SADA NELL WILLIAMS



C
A
T

C
L
U
B



DEBATING CLUB

Weekly debates and public forums were conducted this year by Junior College debaters. Inter-Collegiate matches were held with North Georgia College, Auburn, and Oglethorpe. The debating council also sent four speakers to the state-wide tournament at G. S. C. W. in December. Great speakers were sent to the forum meetings by Miss Emily Woodward, director of the Georgia Public Forums.

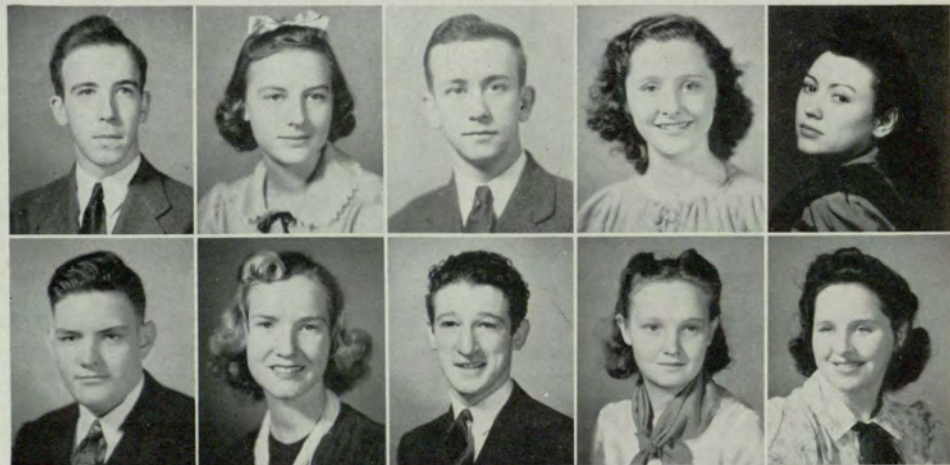


BETTY TAYLOR
President

JACK PLAMPIN
Vice-President
JANE DEMPSEY
Secretary

JOHN BEALL
Program Chairman
BILLIE BENNETT
DOT ESTES
GEORGE GRAHAM

PEGGY HUDGINS
JACK KRASNER
ROSE O'QUINN
MARY HILL WELCH





ELEANOR WATSON
President

DELTA ALPHA DELTA

The purposes of this sorority are: to perfect, and in daily life, to carry out the meaning of sisterhood; to try ourselves to reach the highest standards possible, physically, mentally, and morally; and to be forgetful of self and mindful of others.



JULIET SMITH
Vice-President



BETSY STOCKBRIDGE
Secretary

DOT ESTES
Treasurer

ROSE O'QUINN
Scribe

JANE DEMPSEY
Sergeant-at-Arms

MARY HILL WELCH
Pledge Captain

MARGARET ANNE WOMACK
Second Vice-President



DELTA ALPHA DELTA

LOUISE ALLEN

MARIAN BROWNE

EDNA EDWARDS

BETTY BANG

WILMA COLQUITT

MARY VIRGINIA EVERETT

NELL BALDWIN

ANNE DANIELS

SARA FLORENCE

BILLIE BENNETT

DOT DURLING

BEVERLY FRANKS





MARIE HAMMOND

PEGGY HUDGINS

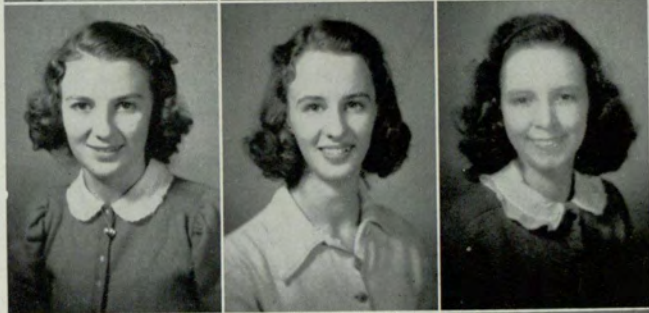
JUNE HUNT



EDNA MAE KEENER

ELEANOR LEWIS

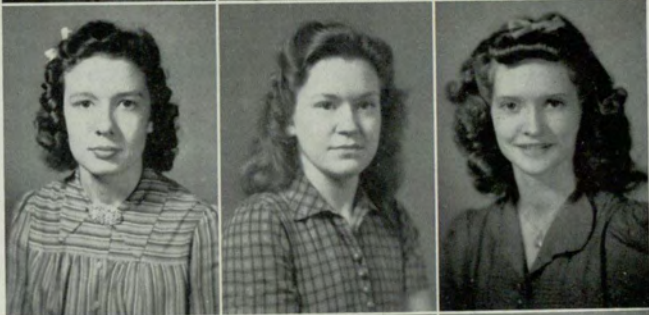
MILLICENT MATTHEWS



LEONA McMICHAEL

ELIZABETH POOLE

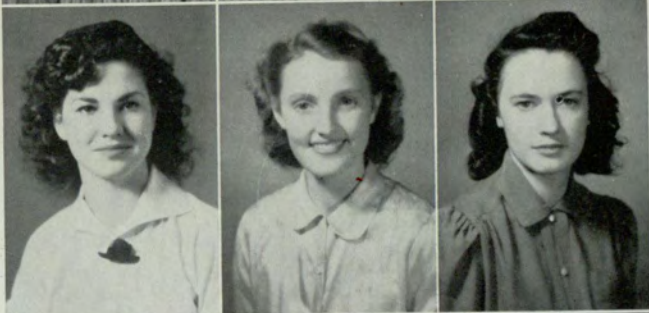
FRANCES ROBERTS



HELEN SEARS

CHARLOTTE SMITH

BETTY TAYLOR



ELIZABETH TOMPKINS

BARBARA WARREN

NELL WOMACK





HELEN STOLLARD
President

GAMMA KAPPA



The purpose of this sorority shall be to promote sociability among its members and the students of the Atlanta Junior College.



DORIS BERRY
Vice-President



IDELL FERGUSON
Secretary



ANN KIDD
Treasurer



SARAH COTTEN

SARAH CROSS

MARIE GODWIN

PEGGY GOINGS

MILDRED HARRIS

LUCY HICKMAN

MARGARET LAMBETH

FRANCES MAYO

ANNE McGRAW

MAXINE PHILLIPS

HELEN SEAVER

NELLE SNOW

WYNETTE WATTS

ANN WILLIAMS

PHI SIGMA ALPHA



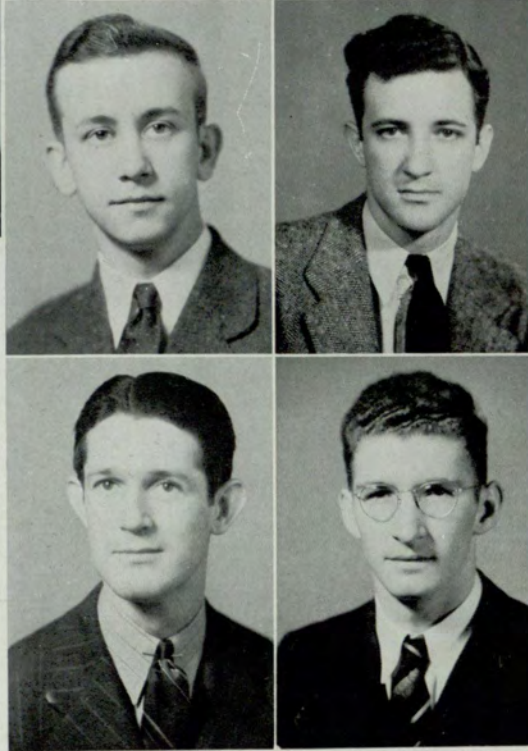
EMORY ADAMS
President

JOHN BEALL
Vice-President

JARVIS MURRAY
Secretary

LUKE DARNELL
Treasurer

JOHN GUERARD



CARL MAULESHAGEN
Faculty Advisor

The purpose of Phi Sigma Alpha is:

To promote ideals of intellectual achievement through the pursuit of truth.

To establish a perpetual fellowship.

To elect into our brotherhood men of good character and outstanding leadership who will work with the interest of our institution at heart, and who will promote in any way possible those things which will be to the advantage and advancement of our college.

PHI SIGMA ALPHA



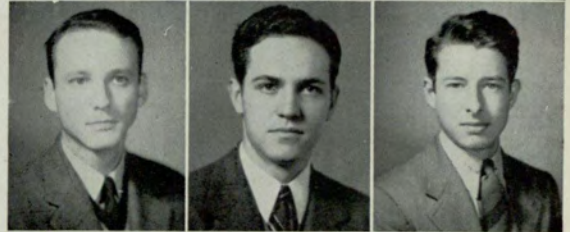
BEN HUIET



"BUSTER" ROBERTS

JAMES WOOD

FRED BORING



WALTER FREEMAN

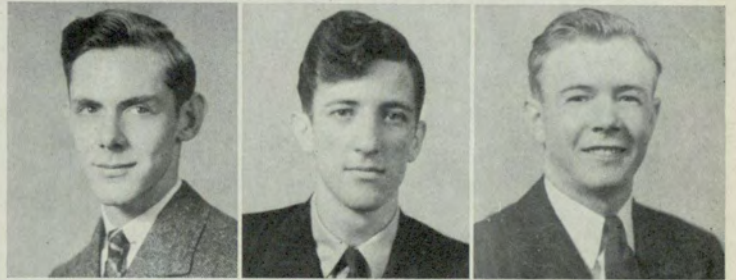
JIMMY GREEN

CECIL HUGHES

GRAHAM MOBLEY

JARVIS MURRAY

BARON ROBERTS

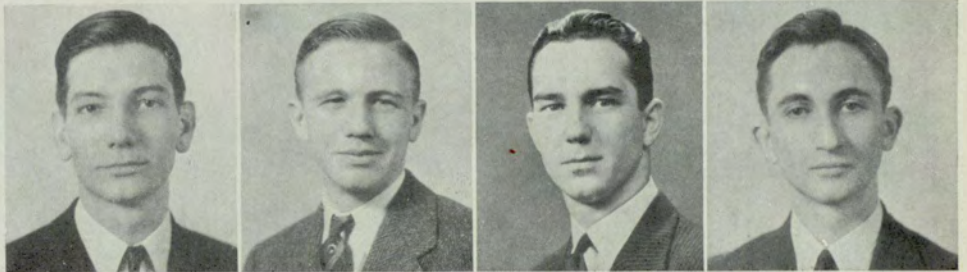


BILL SUTTLES

T. J. WEATHERLY

W. C. WINFREE

WALLACE WHITE



SIGMA PI ALPHA



BEVERLY FRANKS
(Key)
President



GLORIA ALLGOOD
Vice-President



SARAH MOSES
(Key)
Secretary and Treasurer



DR. JAMES ROUTH

The Sigma Pi Alpha was organized in 1937. It is composed of the 15% of the student body who have the highest scholastic average. The scholastic requirements are: an average of B+ both for the current quarter, and for the grand average.

Keys are awarded to those members who are elected to Sigma Pi Alpha for four consecutive quarters, and who have been active in school affairs.

KEY STUDENTS

EMORY ADAMS
(Key)

BETTY TAYLOR
(Key)

JACK PLAMPIN
(Key)

LILLIAN WILLOUGHBY
(Key)





MERELE WALKER
Faculty Adviser

CHARLOTTE BABB

JANE DEMPSEY

FRANK DREW

GUYTON CHRISTOPHER

BOB FIELDS

MARION FISK

ANNETTE GODBEE

BETTY McINTOSH

SARAH SCOTT

NELLE SNOW

MARY JEAN THURMAN

BEATRICE VITNER

BEVERLY ANN WEST

JEAN WILBANKS

MARGARET ANN WOMACK

FRANCES SPAIN
Interfraternity Council Representative



GATEWAY

STAFF



BETTYE BRISENDINE
Editor

In these pages the GATEWAY staff has striven to present the activities of the student body of 1940-41. The time and effort put into the book have but one objective, to publish an annual exemplifying the spirit of the college.



LOUISE ROACH
Assistant Editor



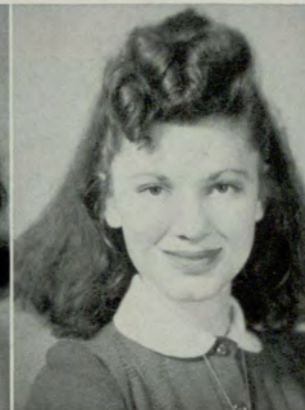
LILLIAN WILLOUGHBY
Art Editor



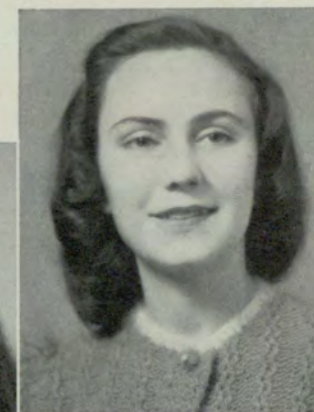
PROF. LAYTON
Faculty Adviser



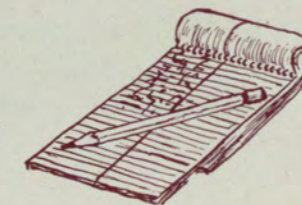
ETHEL SHIPP
Advertising Manager



FRANCES SCREVEN
Circulation Manager



MARJORIE STANFIEL
Business Manager



MARY HILL WELCH
Typist

ELEANOR HOSCH

EDITORIAL STAFF

WILLIS SANDERS
Staff Photographer

EVELYN WAGES

DOT WARREN

BUSINESS STAFF

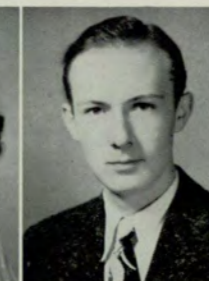
MARIAN BROWNE
Typist

GAIL CAIN

MILDRED HARRIS

GLORIA SMITH

FLORENCE WHITAKER



Flambo

"In the **Flambo** the students are to have a journalist medium somewhat apart from the usual college effort."

DR. GEORGE SPARKS.

The only joint publication of the Junior and Evening Colleges and the only publication devoted to literary interests, the **Flambo** has appeared three times a year since December, 1938. The magazine has been under the guidance of Dr. James Routh as faculty adviser since the first issue.



HARRY LIVINGSTON
Editor



MARJORIE STANFIELD
Business Manager



DR. ROUTH
Faculty Adviser

PEGGY HUDGINS
Associate Editor
BEVERLY FRANKS
Literary Staff

BETTY TAYLOR
Associate Editor
ROSE O'QUINN
Literary Staff

SARA SCOTT
Asst. Bus. Manager
ETHEL SHIPP
Literary Staff

HOPE CHILDS
Asst. Bus. Manager
BEVERLY ANN WEST
Literary Staff

JOHN BEALL
Literary Staff
DOT WARREN
Literary Staff



Junior Collegiate



JOHN BEALL
Editor



JACK PLAMPIN
Associate Editor



SARAH SCOTT
Advertising Manager



DR. ROUTH
Faculty Adviser

ANN ASHURST
Sports Editor

DOT ENGE

PEGGY HUDGINS

ROSE O'QUINN

BETTY PRESCOTT

BETTY TAYLOR

DOT WARREN

The **Junior Collegiate** appeared, as scheduled, in nine monthly issues. Several new features were added to the paper during the year. A consolidated issue of the **Junior Collegiate** and the **Evening Signal**, called the **Collegiate-Signal**, was published in May.



THE STAGE CRAFTERS

Two major productions were presented by the Stagecrafters this year, in addition to six one-act plays in chapel. A reception was held each quarter for friends and other dramatic groups, and a Mask and Wig show was produced in collaboration with the Radio Guild. The Stagecrafters participated in a tournament of one-act plays in April.



JOHN BEALL
President



BETTY TAYLOR
Vice-President

ROSE O'QUINN
Secretary

JACK PLAMPIN
Treasurer

W. C. WINFREE
Publicity



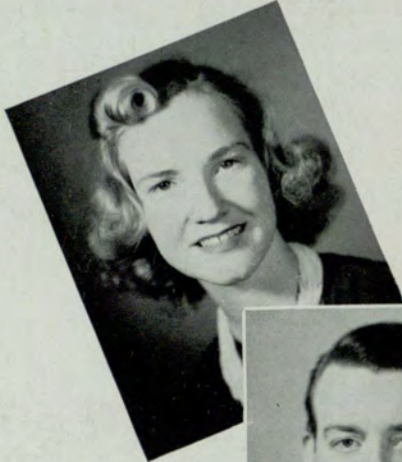
EMORY ADAMS
BILLIE BENNETT
MARIAN BROWNE
CLAUDE CROOKS
BEVERLY FRANKS
ELEANOR HOSCH
MARGARET HUDGINS
BETTY LESTER

MARY McCOLLUM
ELIZABETH POOLE
FRANCES ROBERTS
SARAH SCOTT
GLORIA SMITH
JACK TIPTON
ELEANOR WATSON
BEVERLY ANN WEST



Radio Guild

The Radio Guilders write and produce their plays under the direction of Miss Bridges. They have presented a series of original plays over WATL during the year.



PEGGY HUDGINS
President



WINDY KIMBALL
Vice-President



ROSE OQUINN
Secretary

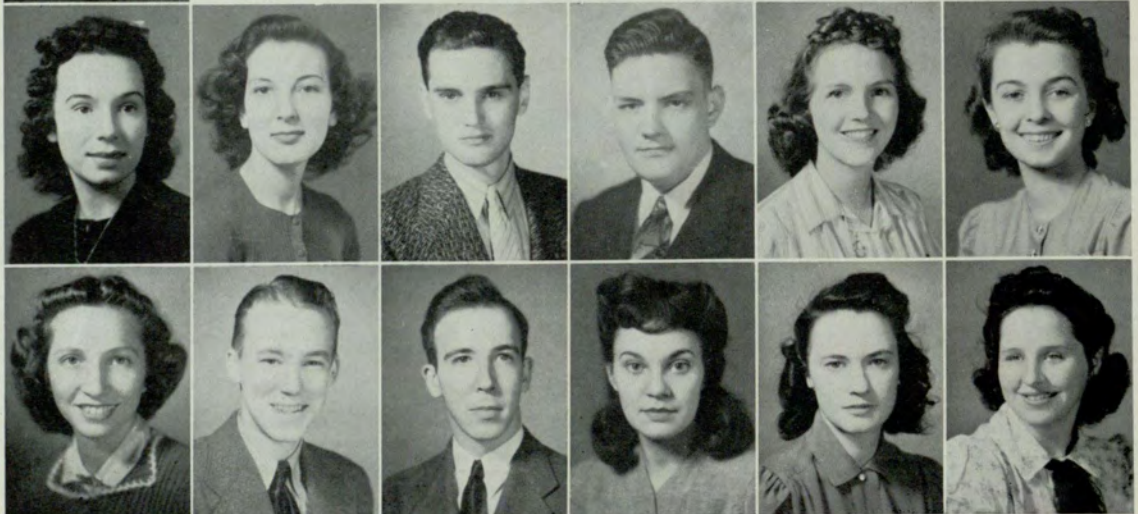


FRANCES ROBERTS
Treasurer



JOHN BEALL
MARIAN BROWNE
HOPE CHILDS
CLAUDE CROOKS
GEORGE GRAHAM
ELEANOR HOSCH
JUNE HUNT

BETTY LESTER
RAY McCAY
JACK PLAMPIN
SARAH SCOTT
BETTY TAYLOR
MARY HILL WELCH



Art Club



LILLIAN WILLOUGHBY
President



MRS. HOSMER
Faculty Adviser



MILDRED HARRIS
Vice-President



DOT WARREN
Secretary



GAIL CAIN
Treasurer

GLORIA ALLGOOD
CAROLYN LaMOTT

JOHN BEALL
VIRGINIA SCOTT

MARION FISK
ANNA MARIE MOORE

GEORGE GRAHAM
BETTY O'KELLY

MARIE HAMMOND
JACK PLAMPIN



Baptist Student Union



SARA MOSES
President

If this Baptist Student Union has brought any student closer to Christ and His church, it has fulfilled one of its main purposes. We know it has been a source of great joy and blessing to many.

"I thank my God on every remembrance of you."



EUGENIA BRIDGES
Faculty Adviser

MARY HILL WELCH
Third Vice-President

ELEANOR WATSON
First Vice-President

NELLE SNOW
Secretary-Treasurer

CLYDE KIMBALL
Second Vice-President

HARVEY LIVINGSTON
Publicity Director

ELNORA ADAMSON
 NELL BALDWIN
 HENRIETTA BARNETT
 GAIL CAIN



BOB CLYATT
 ANN DANIEL
 EDNA EDWARDS
 MARY VIRGINIA EVERETT



ANN FRANKLIN
 BEVERLY FRANKS
 BARBARA GRANT
 MILDRED HARRIS



MARIE HAMMOND
 ELEANOR HOSCH
 ORVILLE HUMBER
 EDNA MAE KEENER



MARGIE KINARD
 EDNA McNAIR
 FRANCES MEADERS
 ROSE O'QUINN



RUTH PARKER
 SARA PATERSON
 VIRGINIA SCOTT
 JULIET SMITH



EVELYN WAGES
 DOT WARREN
 LILLIAN WILLOUGHBY
 EMILY WOODALL
 NELL WOMACK



Glee Club



HELEN SEAVER
President



IDELLE FERGUSON
Vice-President



FRANCES MAYO
Secretary-Treasurer



BARBARA WARREN
Librarian

- GLORIA ALLGOOD
- DORIS BERRY
- FRANCES MEADERS
- PECK MOORE
- FRANCES ROBERTS
- GLORIA SMITH
- DOROTHY WARREN
- EMILY WOODALL



Home Economics

The Home Economics Club started the school year with a tea for the new members. At Christmas, we gave a party at the school and had a tree for a little six-year-old girl from the Seltering Arms in Atlanta. During the year, five members of the club attended the district rally at the University of Georgia. In March, we had a Dude Ranch Party and Dance at the school. A cowboy band furnished the music and the decorations carried out the plan.



HELYNE STOLLARD
Secretary



ELEANOR WATSON
Vice-President



MARIE GODWIN
President

DORIS BERRY
MARIAN BROWNE
DOT ESTES

IDELLE FERGUSON
ANNA RUTH LYLE
FRANCES MEADERS

RUTH PARKER
VIRGINIA SCOTT
CHARLOTTE SMITH

JULIET SMITH
NELLE SNOW
ALICE STRICKLER



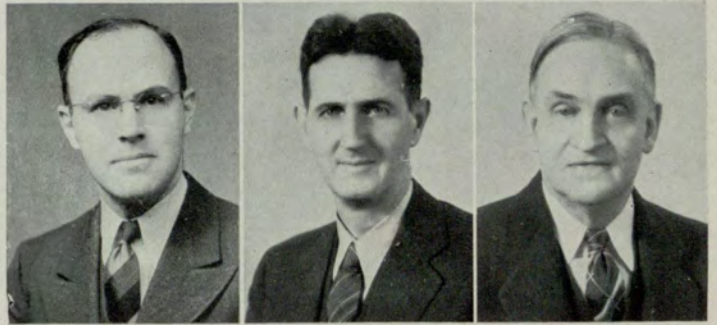
Tythenian



ELI WHITNEY
President

Tythenian Society (a telescopic arrangement of the words Tyro and Demosthenes which means "amateur speaker") has as its objectives: Improvement of speech, development of ideals, extension and dissemination of knowledge, and the formation of friendships. The society is in its second year. It was organized with thirty Junior College men students and four members of the faculty.

The program for this year included semi-monthly meetings, which have been extended to include one dinner meeting, one banquet with after-dinner speeches by all members, and one outing at Indian Creek Lodge.



PROF. E. H. EMORY
Faculty Adviser

MR. T. M. McCLELLAN
Faculty Adviser

DR. JAMES ROUTH
Faculty Adviser

FRED BORING
Sec'y-Treas.
JOHN GUERRARD

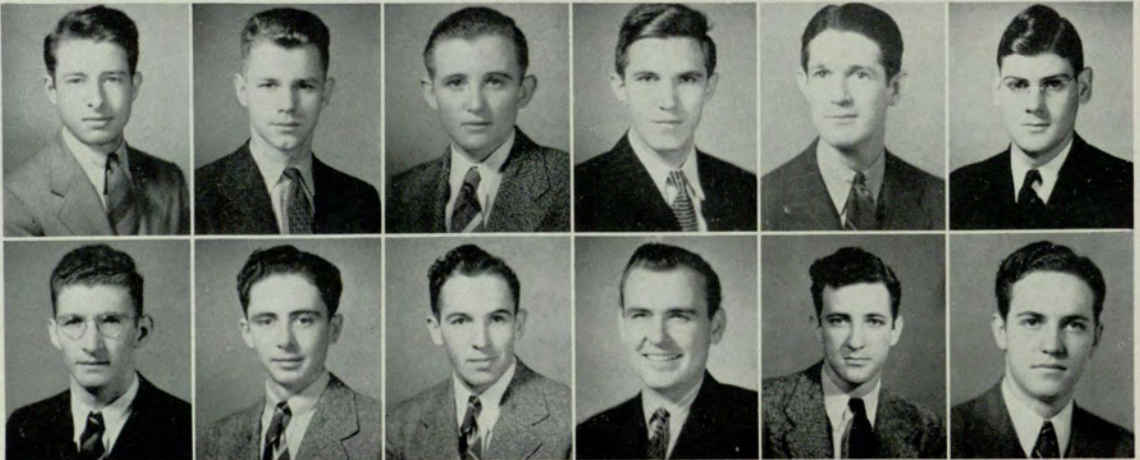
EMORY ADAMS
BEN T. HUIET

MASON BARBER
ORVILLE HUMBER

GUYTON CHRISTOPHER
HARVEY LIVINGSTON

LUKE DARNELL
JARVIS MURRAY

A. P. FORD
JAMES WOOD





Skating was found so popular last year that it was put on the sports program for the winter quarter. At the end of the quarter judges selected the outstanding skaters. Lena Wagnon and Fred Boring won first-place honors and trophies. For the couples Wagnon and Boring were judged best. Womack and Love placed second, while Daniel and Crites received third place. These couples won medals for their graceful skating.

A T H L E T I C S

Basketball



Mary Bumstead coached the girls' basketball team; although the team won only one game they played well throughout the season and were good sports. The team was composed of Bumstead, Ramsaur, Cotton, Allen, Nour, Bennett, Partee, Edwards, Womack, and Hortense Smith. Among the opponents were Sacred Heart, North Fulton (two games), West Georgia (two games), Lithonia, Naps, Decatur, Rockmart, and Washington Seminary (two games). Several of the team members are freshmen and will form a nucleus for a better and stronger team next year.

In the winter quarter medal winners were Higginbotham, Lemon, Christopher, Marbut, Wicks, Wagon, Durden, Ramsaur, Hutcheson, Duckett, Snow, and Elaine Smith, Ayers, Upshaw, O'Brien were girls given medals.

There were no cups given in the winter quarter, but Dot Durden, Betty Ramsaur, Darnell and Higginbotham had the highest scores. In the spring quarter the twenty highest girls and the twelve highest boys bowled for championship honors on May 9. The GATEWAY went to press before results could be given. John S. Blick sponsored a varsity bowling team in the National Duckpin Bowling Tournament April 19-26. Members of this varsity were chosen from the following: Ashurst, team captain; Moseley, Nour, Ramsaur, Durden, Wagon, White, Hutcheson and O'Brien. There was also a boys' team, captained by Darnell and composed of Levine and Higginbotham of the J. C. and Duncan, O'Callahan, Luck, and Cantrell from E. C.



Tennis

In the girls' spring tennis tournament Ann Ashurst lost a close decision to Ann Allen in the finals of the tournament. Sid Underwood was winner of the boys' tournament. There is no record of which boys signed up for the tournament, but the girls who played are Upshaw, Durden, Bennett, Ramsaur, O'Quinn, Edwards, Sane, Dempsey, Allen, and Ashurst. In the spring tournament Ann Allen was ceded number 1, Ann Ashurst number 2, Rose O'Quinn number 3, and Jane Dempsey number 4. Sid Underwood was ceded number 1 in the boys' tournament and Reid Brown number 2. There are no results for these tournaments. Each year there is a tennis varsity composed of both J. C. and E. C. players. Chosen for this spring's varsity were Camp (E. C.), number 1; Ashurst (J. C.), number 2; Allen (J. C.), number 3; Rose (J. C.) number 4; and Bumstead (J. C.), number 5. Sid Underwood and Reid Brown were J. C. students who made the boys' varsity.



Riding

Horseback riding has come up from the ranks in being one of the more popular sports at the J. C. President of this popular club is Peggy Goings. Other officers are Ann Allen, vice-president; Florence Whitaker, secretary; Camille Litton, treasurer; Barbara Warren and Frances Mayo, representatives. Other members are Coddington, Lester, Brown, Poole, Durden, Drummond, Goodwin, Hunt, Godbee, and Pat Sanders, who is the only boy member. The club rides every Monday morning at Pine Hill in North Fulton Park. They receive special prices and enjoy this sport very much. Meetings are held and plans made for various types of affairs, such as moonlight rides.



MOST REPRESENTATIVE



HARVEY LIVINGSTON
PEGGY PAIR

Superlatives

MISS JUNIOR COLLEGE



LOUISE ROACH



MOST INTELLECTUAL

SARAH MOSES
EMORY ADAMS

Superlatives

MOST ATTRACTIVE
MILDRED HARRIS



MR. JUNIOR COLLEGE



JARVIS MURRAY



MOST HANDSOME
JOHN CHENEY

WITTIEST
GAIL CAIN

MOST ORIGINAL
LILLIAN WILLOUGHBY



MOST DEPENDABLE

BEST FRESHMEN



Superlatives



BETTYE BRISENDINE

JOHN BEALL

WINDY KIMBALL

MARGIE STANFIELD



BEST SPORT

LUKE DARNELL

LENA WAGNON



THE BACKWAY

For Your
Pleasure and Convenience
We Sell

ICE COLD COCA-COLA
ARISTOCRAT MILK . . . GORDON'S POTATO CHIPS
DR. PEPPER . . . "7" UP
JONES' PURE FRUIT JUICE . . . KRISPY KREME DOUGHNUTS
CRISWELL'S PIES and CAKES . . . HILL'S SANDWICHES
CANADA DRY GINGER ALE . . . SUNSHINE FRUIT JUICES
HIRSCH'S CANDY . . . OLD'S ICE CREAM

. . . HOT FOODS . . .
"CAMPBELL'S" TOMATO SOUP and "BAILEY'S" SUPREME COFFEE

We Recommend These Products To Our Students

"THE REFECTORY"

GATEWAY DIARY

Dear Diary—

Sept. 23—New crop of freshmen. Sophs feel new importance, though startled by excess freshmen. Sorority invitations issued wholesale.

Sept. 24—Freshmen turn pale over exams while sophs look smug. Chi Rho Sigma's serve coffee and Mrs. Hosmer, aided by artistic females, entertained at tea.

BOOKSTORE

ATLANTA JUNIOR COLLEGE

TEXT BOOKS

SUPPLIES

FOUNTAIN PENS

COLLEGE OUTLINES

PHOTO-ALBUMS

CLIP-BOARDS

STICKERS

PENNANTS

PLACE YOUR ORDERS HERE FOR "BEST SELLERS" OR
ANY OTHER BOOK IN PRINT.

BOARD OF REGENTS

UNIVERSITY SYSTEM OF GEORGIA

Has enlarged Atlanta's educational facilities
for Atlanta Graduates

You may enter the Junior College for day classes
or the
Evening College for classes after business hours

UNIVERSITY SYSTEM CENTER

162 Luckie Street, N. W.

ATLANTA

GEORGIA

50 College faculty members, 2100 students

Photographs In This Book

Were Made By

Minor Studio

93½ Whitehall

Jackson 8316

1 1 1

*"For photographs that are finer,
look for the name Minor"*

Sept. 25—Delta Alpha Delta give tea party for freshmen.

Sept. 26—Sophs return to A. J. C. Students know they have been taken for a ride when they are honored by receipts and schedules from the school. Lavroff profiteers at the bookstore.

Sept. 27—Willoughby serves feast to Chi Rho Sigma and Deltas have knock-out blackout.

Sept. 28—A. J. C. goes rural with rail fences, corn, pigs, and farm tools as Chi Rhos entertain at annual barn dance. Little farmerette, Gail C., and farmer, Tommy B., awarded prize quacker.

WHITAKER'S CAFE

10 Forsyth St. Bldg.

MAin 4264

SKATING

for

PLEASURE — HEALTH — CREDIT

Every Tuesday Morning

10:30 - 12:00

At the

Rollerdrome

634 Penn Avenue

VERnon 8911

"Satisfied Customers Since 1908"

UNIVERSAL GARAGE CO. Incorporated

Supplies of All Kinds

REPAIR WORK OUR SPECIALTY

1104 Peachtree Street, N. E.

At 12th Street

Phones HEMlock 1378-1379

Drink
Coca-Cola
 Delicious and
 Refreshing



Pure refreshment

Sept. 29—Final rush teas and "balling." Freshmen gain weight but lose it again in anxiety.

Sept. 30—Classes today, and pros hold pupils until the bell. Pupils scornful—decide to take cuts but find they are non-existent. Livingston orates at assembly. Brisendine announces GATEWAY. Deltas give forth with the Red and White Flag. Lindsey decides to compete and unearths the "Yellow Rag."

Oct. 1—Pledging begins. Deltas confident, Gammas hopeful, Chi Rhos indifferent, and Phi Sigma Alphas don't care, but condescend to give a smoker for the new male students.

B O W L . . .

The Right Way
 at

BLICK'S

4 CONVENIENT CENTERS

BOWLING PALACE
 Briarcliff Plaza

LUCKY STRIKE
 671 Peachtree Street

KING PIN
 840 Gordon Street

***BOWLING CENTER**
 Top Floor Belle Isle Garage
 (*Largest One-floor Alley in the World)

100 — SANCTIONED ALLEYS — 100

Now the favorite sport of Atlantians
 . . . bowl regularly for competition,
 fun and health.

SINCE 1885

COAL - FURNACES - STOKERS
 LUMBER - MILLWORK

RANDALL BROS. Inc.

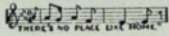
HAVERTY FURNITURE CO.

Atlanta's
Leading
Home
Furnishers
for
56 Years

"IT'S
EASY
TO PAY
THE
HAVERTY
WAY"

Completely
Air-Conditioned
For Your
Shopping
Comfort

COR. EDGEWOOD AVE. & PRYOR ST. WAL. 2906-7-8-9



For 56 Years the South's
Leading Home Furnishers

HARPER'S

COLONIAL FLOWER
SHOP

1094 Peachtree St., N. E.
HEMLOCK 1181

~~10~~
8.50

- Oct. 3—The fraternity fries steak at the lodge, while rest of the school studies?
- Oct. 9—Chi Rho Sigma's meet with "Mother Harris" for the first meeting.
- Oct. 10—Cain shows off her diamond ring. (Congratulations to Tommy.)
- Oct. 11—Chi Rho's feast at a noon spread.
- Oct. 15—Phi Sigma's and Chi Rho Sigma's battle over plans for an Xmas Dance.

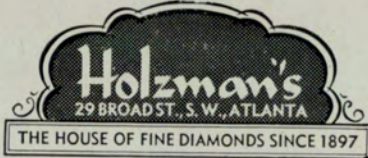
Ansley Hotel

Just around the corner from the Atlanta Junior College.
Ideally located for Fraternity, Sorority and
other organizations' banquets, dinners, etc.

L. S. TUCKER,
Manager

*Congratulations
Graduates*

from



29 Broad St., S. W.

**ATLANTA'S OLDEST
JEWELRY STORE**

*Operated
Continuously
Under One Name*

For Extra Pep and Energy Drink

ARISTOCRAT MILK

It's delicious and healthful
for that between class snack

ARISTOCRAT
DAIRY PRODUCTS COMPANY

MAin 3453

165 Haynes St.

F & W GRAND

5 & 10 Cent Store ⁵⁰⁰

97 Whitehall St.

Oct. 16—Registration for the draft at the J. C. Collegians watch all proceedings with interest.

Oct. 17—All-day outing at the lodge, every one eats and eats.

Oct. 18—Freshmen pose before camera in a silly sort of way, as Chi Rho's lead on to victory in GATEWAY contest.

Oct. 23—Charm school evidently charms Warren, Williams, Harris, and Brisendine as they fill the front row each day.

Willoughby learns the correct coiffure from Adolphe.

"Meet Your Friends"

at

STANDARD DRUG CO.

"Up the street from the college"

YOU ARE ALWAYS WELCOME

Compliments of . . .

**JIMMY HOLMES
THE FOX TROT STUDIOS
OF POPULAR PIANO MUSIC**
WAlnut 8257

Headquarters—All

MAKES OF PHONOGRAPH RECORDS

BAME'S INC.

60 North Broad St.

MAin 5776

In Business Since 1884

Building Material . . . Lumber
. . . Millwork . . . Electrical
Fixtures . . . Hardware . . .
Paint . . . Ready-Mixed Con-
crete . . . Furnaces and Heat-
ing Equipment.

CAMPBELL COAL CO.

For Action Call Jackson 5000

STUDENTS . . .

PATRONIZE

"Your Neighbor Across the Street"

BRITAIN'S

W. D. McDANIEL, JR., Mgr.

Seat Covers - Lubrication - Washing and
Waxing - Parking

STANDARD OIL PRODUCTS

Cor. Nassau and Luckie Jackson 8839

Congratulations . . .

To those who toil by day
And then while "their companions sleep"
Are studying "bravely in the night."

**BRYANT LITHOGRAPHING
COMPANY**

OFFICE SUPPLIES - PRINTING

Atlanta, Georgia

Oct. 31—Signs announcing The Eye cause apprehension among the faculty and students.

Nov. 1—The Eye appears!!! Interfraternity council overrun by the Chi Rho Sigma's, but it seems it's their time to say: "Every thing is legal." Mobley makes remarks.

Nov. 4—Hosch confesses her part on The Eye, but the editor still remains a mystery. Speculations rampant tho'.

Nov. 7—Freshman class "jives out" with a super script dance.

Nov. 11—Yellow Rag makes its debut.

Nov. 12—Super Snooper vies with The Eye, and The Yellow Rag, in a mild sort of way. What has become of The Eye?

Nov. 13—Frat and dates sleepy from the hay ride given by Evelyn Mathis, last year's sweetheart.

Nov. 15—Chi Rho's initiate at a very solemn(?) ceremony.

Nov. 18—The Glee Club makes its first appearance at Homecoming Banquet.

Nov. 21—School out for Thanksgiving! Hooray!

Nov. 22—"Thankful students" recuperate and shake off pounds, gained the day before, by dancing at the Chi Rho Sigma "Circus Dance."

Nov. 28—Extra "Eye" appears. Faculty threatens expressions.

Dec. 4—Phi Sigma Alpha's give one of their brawls in the refectory.

Dec. 8—The fraternity initiates—and how!!

Dec. 10—Crooks and Taylor play hosts at Dramatic Club reception.

Dec. 12—Chi Rho Sigma's are in their own as, orchids, formals, and the spirit of gaiety prevails at The Christmas Dance at the Mosque.



HOUSE OPTICAL COMPANY

Better glasses by oculist's prescriptions. We carry the latest styles in frames and the corrected-curve lens which gives you greater marginal vision. Ask your doctor about our service.

34 WALTON STREET, N. W. WA. 5227

GENERAL SPECIALTY COMPANY

Manufacturers and Distributors

Banners, Pennants, Flags, Felt Novelties, Plain and Fancy Embroidery Chenille and Felt Letters and Emblems, Celluloid Buttons and Badges, Gold and Silver Embossing, Art Work, Designers, Posters
COSTUMES FOR RENT FOR BALLS

72 Broad St., N. W. WALNUT 5127
ATLANTA, GEORGIA



**ANTHONY PERMANENT
WAVING SALON**

MASTER OF PERMANENT WAVING
519 MORTGAGE GUARANTEE BUILDING

**MILTON BRADLEY CO.
of GEORGIA, INC.**

384 FORREST AVE., N. E. WA. 7331
ATLANTA, GEORGIA
SCHOOL and ART SUPPLIES, TOYS and GAMES

JACKSON 7181 *Open All Night*

Davis Brothers Restaurant

SPECIAL SUNDAY DINNERS

Moderate Prices

104 Luckie St. Atlanta, Ga.

Dec. 15—Students grow pale and haggard as exams start.

Dec. 19—The J. C. goes on the air with an original play by one of the Broome boys, Sherwood this time.

Dec. 20—Chi Rho's award honors to Stanfiel, Shipp and Sullivan at a luncheon in the Spanish Room, while the rest of the school celebrates the end of the quarter and Christmas, with a party at the lodge.

**SPORTSMAN'S HEADQUARTERS
IN ATLANTA**

Bicycles and Supplies - Sporting Goods
Athletic Goods - Fishing Tackle and
Children's Vehicles and Radio

✓ ✓ ✓

Wholesale and Retail

✓ ✓ ✓

WALTHOUR & HOOD CO.

Pryor St. at Auburn Ave. Ma. 7137

WOCO PEP

King of Motor Fuel

W. T. WATKINS SERVICE STATION

1328 DeKalb Ave., N. E. DE. 9174
ATLANTA, GEORGIA

**L. C. SMITH & CORONA
TYPEWRITERS, INC.**

62 Marietta St. WA. 0741-42
ATLANTA, GEORGIA

Compliments of

Underwood-Elliott-Fisher Co.

TYPEWRITERS
ADDING MACHINES

159 Spring St., N. W. Wa. 0947-8-9

MASTER PRINTERS
HARRY BARFIELD CO.
*"South's Largest Producers of One-Time
Carbon Forms"*
ATLANTA, GEORGIA

*Compliments
of*
ALBERT EDMONDSON, JEWELER
ARCADE BUILDING

R. A. CHRISTOPHER

King of Recorded
S W I N G

IF YOU SWING GIVE CHRIS A RING

WAlnut 4289



Dec. 21—D. A. D.'s have a visit from St. Nick at their annual Xmas Party at the lodge.
Dec. 23—Phi Sigma Alpha's and sweethearts shine at the Xmas Dance. Thweat, amid a shower of orchids and other nice things, is chosen "sweetheart of the fraternity."
Yes, every one had a very merry Christmas.
Jan. 3—We register and find Santa has brought the old J. C. a shuffleboard court. Every one cuts class to try out the game.

UNIVERSITY GRILL

across street from school

Baked Ham 10c — Chopped Steak 10c
Cheeseburger on Toasted Buns 10c
Hamburgers and Hot Dogs 5c

Courteous Service at All Times

Compliments of

GORDON'S

Fresh

P O T A T O C H I P S

**MONTAG'S
BLUE HORSE**

Paper School Goods
and

Fashionable Writing Paper

Sold Exclusively in

THE BOOK STORE

Tonight . . . and Every Night
AN INVITATION

*to have a Delicious Chicken or Steak Dinner,
delightfully served in pleasant surroundings*

at

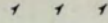
THE COLONNADE

2415 Piedmont Road

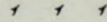
Cor. Lindbergh Drive Only 10 Minutes from Town



HARRY HEARN
and
ORCHESTRA



Better Music
for
Better Dances



BElmont 1675
3208 North Ave., N. E.



- Jan. 5—The school is overwhelmed by the Georgian Invasion, but misses many old faces.
 Jan. 18—D. A. D.'s open Club Zebra, complete with milk bar, for a function out at the lodge.
 Jan. 20—Flu takes about three-fourths of the school out. The other one-fourth cut, to go to the show.
 Jan. 23—Chi Rho's open mid-year rush season with a spinster party at C. Littion's.



GOLD SHIELD
Launderers and Cleaners

TRIO
AMERICAN
PIEDMONT

CAPITAL CITY
DECATUR
MAY'S

TROY
GUTHMAN
EXCELSIOR

Atlanta, Georgia



Jan. 24—Chi Rho Sigma does it again—another ultra luncheon. Gamma's go "Gay Ninetish" on us with a party at the lodge.

Jan. 25—The Art Club gives a benefit bridge, with a "portrait by Willoughby"—first prize.

Jan. 28—The Collegiate comes out. Every thing is dull, as the flu still has us in its clutches.

Feb. 1—Chi Rho Sigma's are entertained by the freshmen at an "Around the World" party. Every one is thrilled and we "hog" the society columns of the evening paper.

Feb. 6—Dr. Walker has the Chi Rho's over for coffee.

Feb. 10—Every one is studying and the rain keeps falling.

Feb. 23—The Chi Rho's form an alumni chapter.

Feb. 24—Coach Layton leaves for New York, to make contacts for the J. C. publications.

Mar. 1—D. A. D.'s model and play bridge in the Tea Room. The fraternity dances in the refectory.

Mar. 3—Honors day—at the J. C. Seven smarties' names are engraved on the loving cup.

Mar. 10—Every one has the pre-exam blues. They start today.

Mar. 15—Exams are over.

Mar. 19-20-21—The Student Prince, J. C. operetta, a huge success.

Mar. 23—Exams over and the sororities initiate—the lucky girls.

Mar. 27—The Gamma's rush again.

Mar. 28—The D. A. D.'s raffle cakes and Eli walks off with the biggest cake.

Mar. 29—X. P. E. has a benefit bridge. Ann Franklin won the orchid.

Mar. 31—The Radio Guild holds forth over WAGA.

Compliments of

ATLANTA CARBONATED
BOTTLERS' CLUB

Compliments of

J. C. DUGGAN
Optometrist



Apr. 2—Chi Rho Sigma's have a soft drink party and wade in the lake at East Lake.

Apr. 3—The D. A. D. knitting contest with the Tythenians ended today. Results: The J. C. contest has been syndicated, has been in all Atlanta papers, and the Junior Collegiate.

Apr. 4—The D. A. D.'s give an April Fool Dance in the refectory.

We wish to express our appreciation to the advertisers who have made this book possible and to Coach Layton.



Apr. 12—Phi Sigma Alpha Script Dance—small crowd but all stags, yippe!
 Apr. 18—Chi Rho Sigma Script Dance—dancing in the court—fun.
 Apr. 19—Worked from 10 to 7:30 on Annual.
 Apr. 21—Deadline for GATEWAY.

MARCUS'

62 Peachtree

61 North Broad

*"is where the best and most stylish Men's
 Wear is bought at the best price . . ."*

and is payable—1/3 in 30 days, 1/3 in 60 days, and
 1/3 in 90 days.

ESTABLISHED 1908

BOB ACKERLY

PHOTOGRAPHER

✓ ✓ ✓

VERnon 7673

SOUTHEASTERN PHOTO SERVICE

P. O. Box 88

Emory University Georgia



SUCCESSFUL ANNUALS

Require the services of experienced and expert craftsmen, trained in every detail of the processes of creating • planning layout and design • typesetting • printing lithographing and binding ... Throughout half a century this company has pioneered in the production of the highest type of printing ... Our services include a special college annual sales and service organization ... Abundant equipment • modern and complete ... Prices representing maximum in value



FOOTE & DAVIES

PRINTING • LITHOGRAPHING • ENGRAVING

ATLANTA



RESERVE
LIBRARY USE ONLY

GEORGIA STATE UNIVERSITY



3 0785 00576 4626

