

THE

1942

GATEWAY

DAY



University System
of Georgia

UNIVERSITY SYSTEM
CENTER LIBRARY
ATLANTA

~~R 378.73~~
~~Malenkov~~
~~1942~~

LIBRARY
UNIVERSITY EXHIBITION
1942

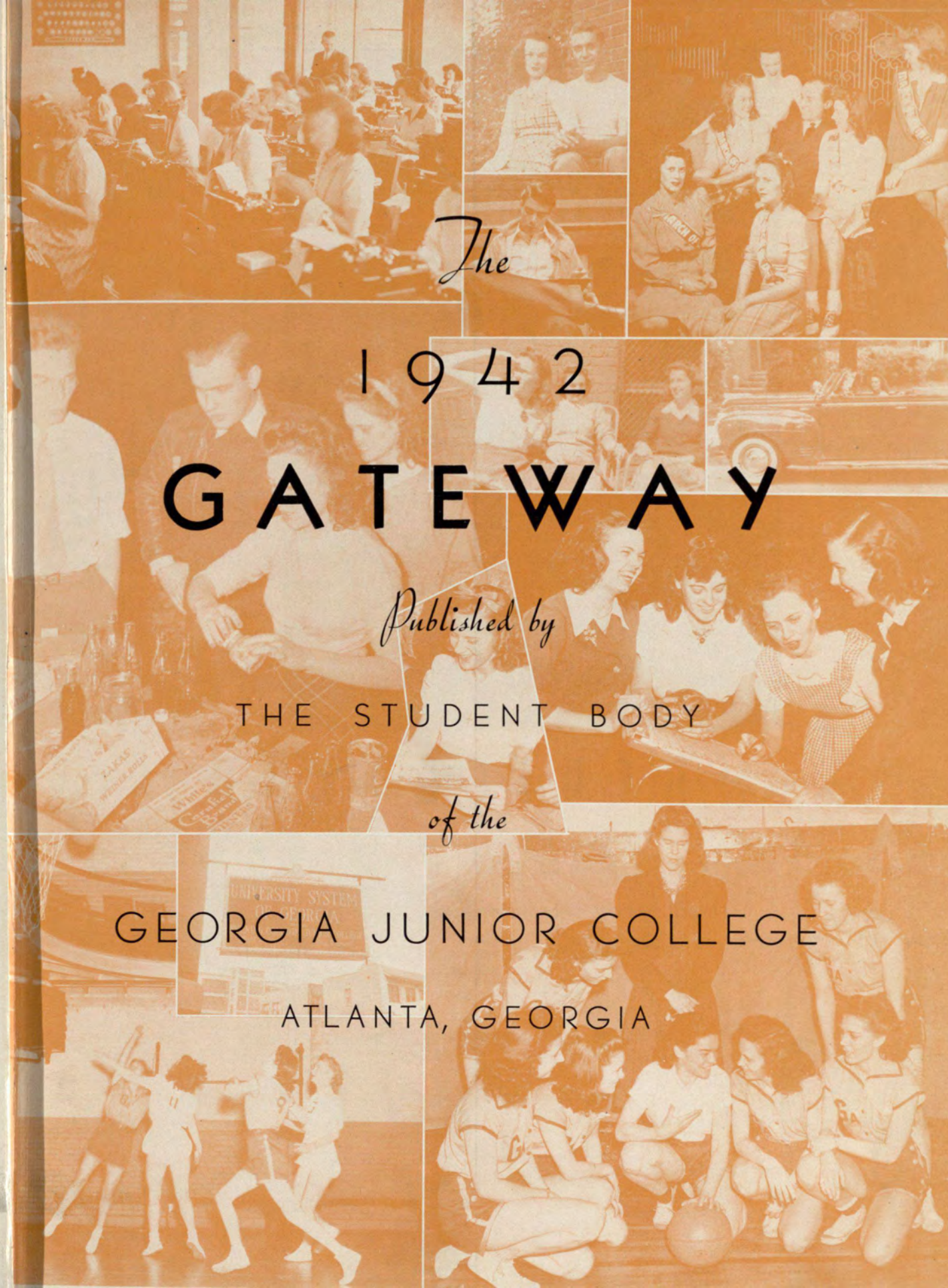
24476



The . . .

GEORGIA
JUNIOR
COLLEGE

Presents . . .



The

1942

GATEWAY

Published by

THE STUDENT BODY

of the

GEORGIA JUNIOR COLLEGE

ATLANTA, GEORGIA

MARJORIE STANFIEL
Editor

ETHEL SHIPP
Business Manager



DEDICATION

BECAUSE she is a true friend,

BECAUSE she encouraged us when the going was rough,

BECAUSE she extended a helping hand to aid us whenever we needed it,

BECAUSE she helped us wholeheartedly in social affairs,

BECAUSE of her unceasing work to better our college,

. . . we dedicate the 1942 GATEWAY to our Dean of Women,

Mrs. Nell H. Trotter

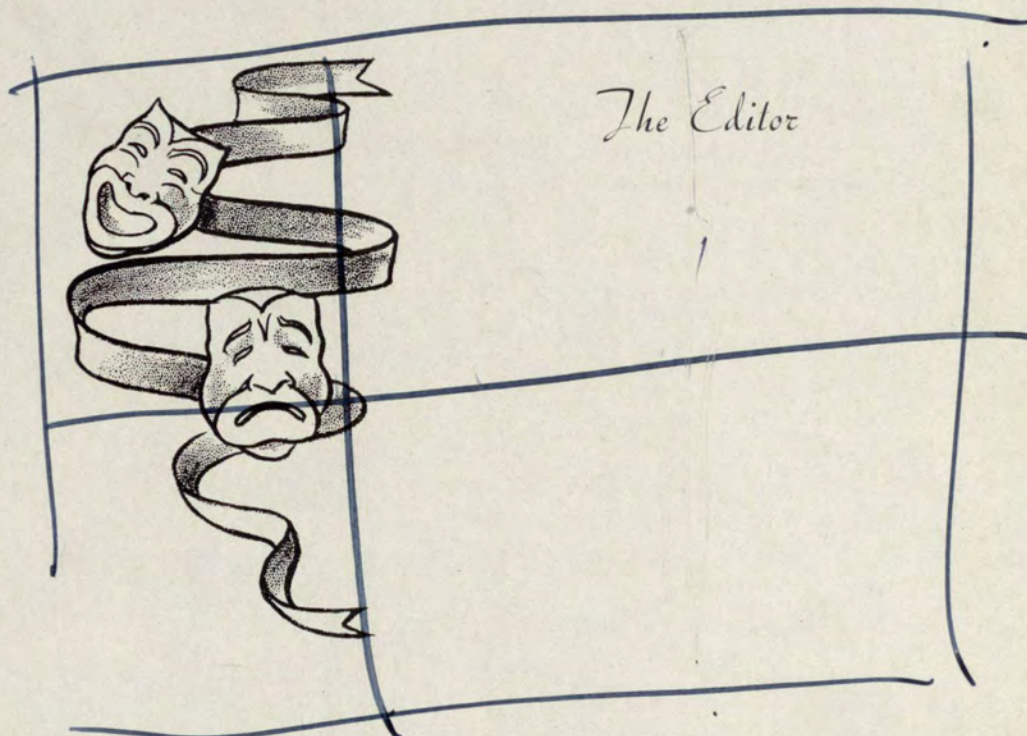
FOREWORD

LD 1961
G85 G3
1942
C.2
Univ. Archives
LD 1965
.G37
1942
C.2

"ALL THE WORLD'S A STAGE and all the men and women merely players"—With the Junior College as our setting and the students as players, we will try to present to you a true picture of Junior College life which is projected on our GATEWAY screen. Remember rush week with a million handshakes, registration perspiration in the afternoon, vibrant conversation in the halls, and the mad dash to beat the second bell. Remember vows to really study this quarter, but resulting only in frantic cramming for the exams. Remember early morning breakfasts at the lodge, and gay week-ends highlighted by numerous dances, hayrides, wiener roasts and what have you?

Thus is classroom life and activity life, the integral part of college life, the "special technicolor portion" of the movie in which every student has a part.

With these memories still fresh in mind, we begin our "Story of the Junior College."



Directed

GEORGE M. SPARKS, A.B., M.A., LL.D.
Mercer University; Oxford, England
Director of School



T. M. McCLELLAN, B.S.C., M.S.C.
Georgia School of Technology;
New York University
Registrar

MRS. NELL HAMILTON TROTTER, A.B., M.A.
University of Arkansas; University of
Wisconsin
Dean of Women



ELMER G. CAMPBELL, A.B., M.S., Ph.D.
Hiram College of Ohio; Purdue University;
University of Chicago

ERNEST HENRY EMORY, B.A., B.S.
Mercer University; Georgia School of
Technology



CARL BROWN, B.S.E.E., B.C.S.
Georgia School of Technology;
University System of Georgia Evening College

R. A. CHRISTOPHER, B.S.C.
University of Georgia



M. H. BRYAN, A.B., A.M.
University of Illinois

EUGENIA BRIDGES, A.B.
Agnes Scott



VIRGINIA DRAKE, A.B., A.B.L.S.
University of Georgia; Emory University



by



V. V. LAVROFF, B.S.C., M.A.
Harbin, China; Georgia School of Technology;
Emory University

CARL MAULESHAGEN, A.B., M.A., PH.D.
University of Tennessee; University of
Chicago; University of Minnesota



MRS. HOLLINGSWORTH, B.S., M.S.
Washington University; Columbia University

R. R. HOLLINGSWORTH, A.B., M.A., PH.D.
University of Washington; Columbia Univer-
sity; University of North Carolina

JOSEPH N. LeCONTE, A.B., M.S., PH.D.
Emory University; University of North
Carolina



PICKETT HYNES, B.C.S.
Georgia Evening School; University of
Georgia

JAMES E. ROUTH, A.B., PH.D.
Johns Hopkins University

HALL HULSEY, A.B., M.A.
University of Georgia; University System of
Georgia Evening College; Emory University



CAPTAIN WILLIAM P. LAYTON, B.PH.
Emory University

MRS. LINNIE TALLAN, R.N.

MRS. A. J. WALKER, A.B., M.A., PH.D.
Hollins Institute; Radcliffe College;
Harvard University



... FACULTY



Starring



MARJORIE STANFIEL as *Miss Junior College*
CLYDE KIMBALL as *Mr. Junior College*



ANNE FRANKLIN *Most Attractive*

GERALD MARTIN *Most Handsome*



ETHEL SHIPP *Most Versatile Girl*

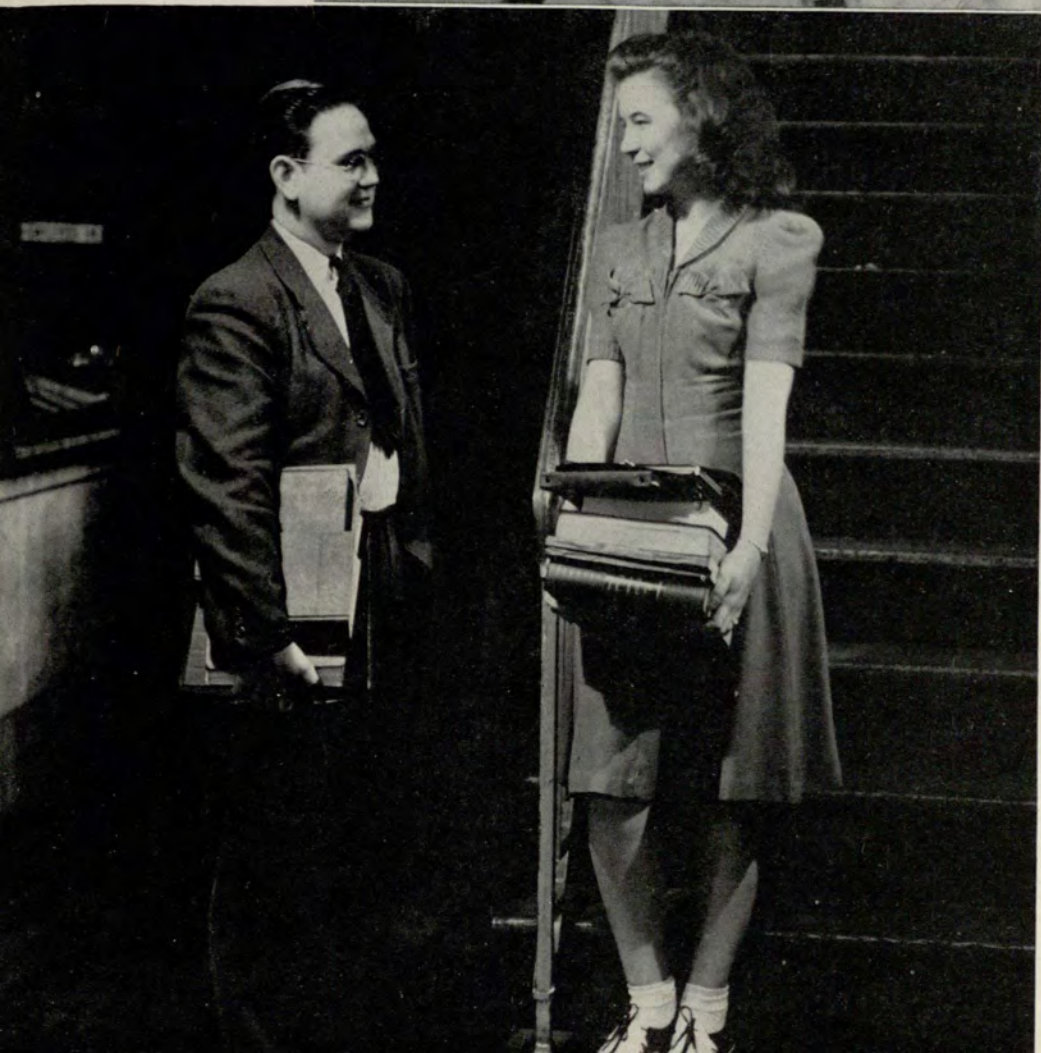
PAT SANDERS *Most Versatile Boy*

ELEANOR HOSCH

Friendliest

CAMILLE LITTON

Wittiest



BEVERLY ANN WEST
Most Scholastic Girl

FRANK DREW
Most Scholastic Boy





MARGERY HOVEY

*Most
Dependable Girl*

C. J. BROOME

*Most
Dependable Boy*



LILLIAN DANIEL

*Outstanding
Freshman Girl*

JACKIE RAGSDALE

*Outstanding
Freshman Boy*



Gateways' Selection of



OUTSTANDING PLAYERS



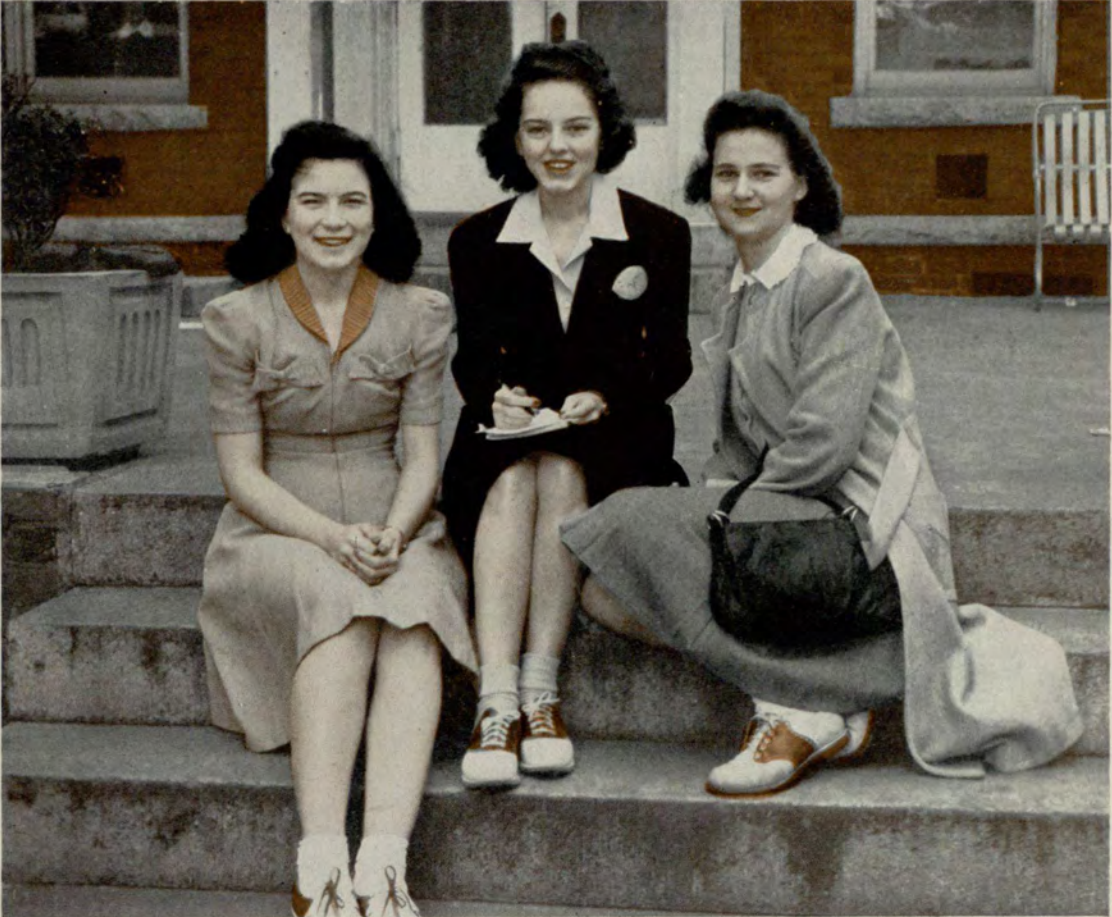


People



in THE NEWS

FEATURING



WEST, TOMPKINS, WOMACK

SOPHOMORE OFFICERS

ELIZABETH TOMPKINS	<i>President</i>
MARGARET ANN WOMACK	<i>Vice-President</i>
BEVERLY ANN WEST	<i>Secretary</i>
MARGERY HOVEY	<i>Treasurer</i>

Sophomores



ELNORA ADAMSON

GLORIA ELAINE ALLGOOD

Glee Club, 40-41, President, 41-42; Art Club, 40-41, Secretary-Treasurer, 41-42; Sigma Pi Alpha, Vice-President, 40-41, 41-42; Tri-Beta, Recording Secretary, 41-42; Interfraternity Council, 41-42.

LILLIAN BENNETT

CAROL ANNE BETTS

Chi Rho Sigma, 40-41, 41-42; Home Ec. Club, 41-42; Red Cross, 41-42.

C. J. BROOME

Tythenian, 40-41, Publicity Agent, 41-42; Interfraternity Council, 41-42; B. S. U., 40-41, 41-42; Dramatic Club, 40-41; Phi Sigma Alpha, 40-41; Junior Collegiate, 41-42; Superlatives, 41-42; Most Dependable Boy.



Going to School

... *Sophomores*

.. The 1942 Gateway

WILMA COLQUITT

FLORENCE COPPEDGE

Home Ec. Club, 41-42; Art Club, 41-42.

ROBERT DAVIS

Tythenian, 40-41, 41-42.

VIRGINIA DAVIS

JANE DEMPSEY

Delta Alpha Delta, 40-41, Sergeant-at-Arms, President, 41-42; Debate Club, 40-41, Secretary, 41-42, President; Student Body, 41-42; Vice-President Student Council, 40-41; Interfraternity Council, 40-41; Sigma Pi Alpha, 40-41; May Court, 40-41.

LIBRARY
UNIVERSITY EXTENSION
ENTER - ATTEND





LIBRARY
UNIVERSITY EXTENSION
ATHLETICS

FRANK ARMSTRONG DREW

Sigma Pi Alpha, 41-42; Debate Club, 41-42; *Flambo*, 41-42; Associate Editor; Junior Collegiate Staff, 41-42.

DOT DURLING

Glee Club, 40-41, 41-42.

EVELYN ELLINGTON

Chi Rho Sigma, 40-41, 41-42; Home Ec. Club, 40-41, 41-42, Vice-President; Red Cross, 41-42.

MARIAN ELAINE FISK

Sigma Pi Alpha, 40-41, President, 41-42; *Flambo* Proofreader, 41-42; Art Club, 40-41, Vice-President, 41-42; Interfraternity Council, 41-42; Beta Beta Beta, 41-42.

SARA FLORENCE

Delta Alpha Delta, 40-41, 41-42, Pledge Captain; Student Council, 41-42.



Registration

... Sophomores

.. *The 1942 Gateway*

ANNE FRANKLIN

Chi Rho Sigma, 40-41, Secretary, 41-42; B. S. U., 41-42; "Cat Club," 41-42; Superlatives, 41-42, Most Attractive; May Court, 41-42.

ANNETTE GODBEE

Sigma Pi Alpha, 41-42.

VIRGINIA GOODWIN

MARIE HAMMOND

Delta Alpha Delta, 40-41, 41-42; B. S. U., 40-41, 41-42; Art Club, 40-41, 41-42.

NINA WARREN HILSMAN

Beta Beta Beta, 41-42; President, May Court, 41-42, Maid of Honor.





ELEANOR STARK HOSCH

Chi Rho Sigma, 40-41, 41-42; Vice-President, Red Cross, 41-42, Vice-President; Interfraternity Council, 40-41, 41-42; Student Council, 41-42, Secretary; Dramatic Club, 40-41; Radio Guild, 40-41; May Court, 40-41; Maid of Honor; Sigma Pi Alpha, 41-42; B. S. U., 40-41, 41-42; Superlatives, 41-42, Friendliest.

MARGERY PARKS HOVEY

Chi Rho Sigma, 40-41, Scribe, 41-42; Treasurer, Sophomore Class, 41-42; Red Cross, 41-42, Secretary; Interfraternity Council, 41-42, President; Superlatives, 41-42; Most Dependable Girl.

PEGGY HUDGINS

Delta Alpha Delta, 40-41, 41-42; Junior Collegiate, 40-41, 41-42, Editor.

JUNE EVELYN HUNT

Delta Alpha Delta, 40-41; Dramatic Club, 40-41; Riding Club, 40-41; Radio Club, 40-41; Kappa Alpha Chi, 41-42, Honorary President; Young Democratic Club, 41-42.

FLOY HUTCHENSON



Planning Rush Week

.. *Sophomores*

.. The 1942 Gateway

PATRICIA ANNE ISBELL

Home Ec. Club, 41-42.

LYLA JONES

CLYDE WINBURN KIMBALL, JR.

President, Freshman Class, 40-41; Interfraternity Council, 40-41; Vice-President, 41-42; Stagecrafters, 40-41, 41-42; Baptist Student Union, 40-41; Second Vice-President, 41-42, President; Tythenian, 40-41, 41-42, President; Red Cross, 41-42, Treasurer; Student Council, 40-41, 41-42, President; Superlatives, 40-41, Best Freshman Boy, 41-42; Mr. Jr. College Debating Club, 41-42.

MARGIE NORLESE KINARD

Chi Rho Sigma, 40-41, 41-42; Interfraternity Council, 40-41, 41-42; B. S. U., 40-41; Secretary-Treasurer, 41-42.

BETTY LESTER

Chi Rho Sigma, 40-41, 41-42; Interfraternity Council, 40-41, 41-42; Dramatic Club, 40-41, 41-42, President; Student Council, 41-42, Treasurer; Red Cross, 41-42; Chairman, First Aid; GATEWAY, 41-42, Circulation Manager.





MARTHA ELIZABETH LITTLEFIELD

Beta Beta Beta, 41-42.

CAMILLE LITTON

Chi Rho Sigma, 40-41, 41-42, Social Chairman;
Interfraternity Council, 41-42, Treasurer; Riding
Club, 40-41, Vice President; Methodist Student
Union, 40-41, 41-42; Debate Club, 41-42; Superlatives,
41-42; Wittiest.

JACK MARBUT

BONNIE JEAN MARLER

Baptist Student Union, 41-42; Young Democratic
Club, 41-42.

GERALD E. MARTIN, JR.

Baptist Student Union, 41-42; Vice President, Ty-
thenian Society, 41-42; Dramatic Club, 41-42; Su-
perlatives, 41-42, Most Handsome.



"Rushin"

... Sophomores

.. *The 1942 Gateway*

CHARLOTTE VENABLE METHVIN

Glee Club, 41-42.

ALICE SVEA MILLER

JUDSON MOSES

LARUE McDUFFIE

Chi Rho Sigma, 40-41, 41-42.

ANNE MCGRAW

Home Ec. Club, 41-42; Gamma Kappa Sorority,
40-41; P. S. A., 41-42.





EDNA McNAIR

NOUR A. NOUR

BETTY O'KELLY

Chi Rho Sigma, 40-41, 41-42; Home Economics Club,
40-41, 41-42; Representative, Interfraternity Council,
41-42.

CALMIRA PAPAGEORGE

Home Ec. Club, P. S. A., 41-42.

ELEANOR PORTWOOD

Kappa Alpha Chi, 41-42; Interfraternity Council,
41-42.



Class begins

... Sophomores

.. The 1942 Gateway

ANNETTE RICHARDSON

Beta Beta Beta, 41-42, Vice-President.

PAT SANDERS

Superlatives, 41-42; Most Versatile Boy, Junior Collegiate, 41-42; Tythenian, 40-41, 41-42.

RUTH SANE

B. S. U., 40-41, 41-42; Delta Alpha Delta, 41-42; Home Ec. Club, 41-42; Art Club, 41-42.

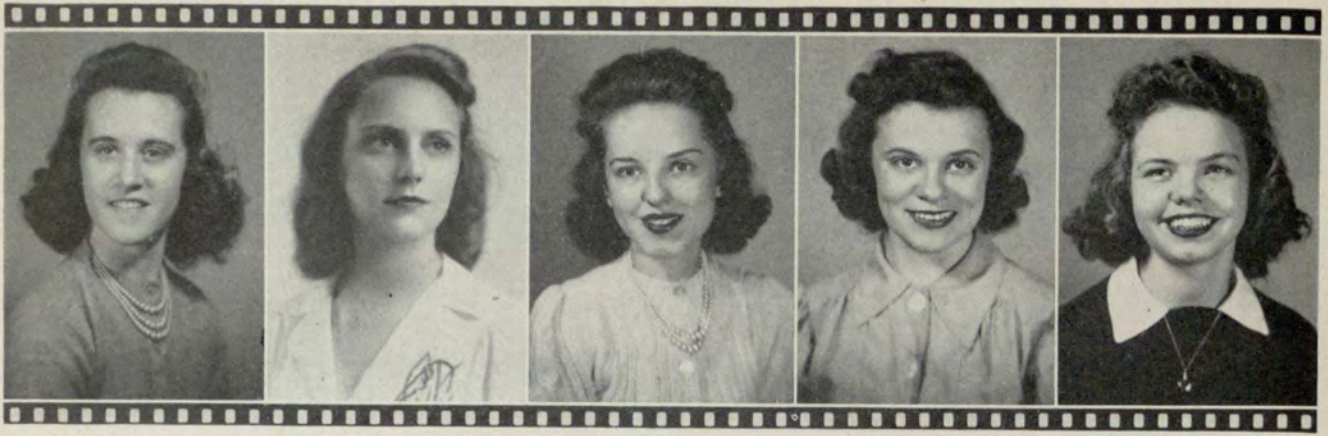
ETHEL SHIPP

Chi Rho Sigma, 40-41, 41-42, Treasurer; GATEWAY, 40-41, Advertising Manager, 41-42, Business Manager; *Flambo* staff, 40-41; First Homecoming Banquet, 41-42; Interfraternity Council, 41-42; Secretary; May Court, 40-41, 41-42; Superlatives, 41-42; Most Versatile Girl; Red Cross, 41-42; Cat Club, 41-42.

NATALIE NAY SHUMATE

Chi Rho Sigma 40-41, 41-42.





FRANCES CORNELIA SPAIN

Sigma Pi Alpha, 41-42, Treasurer; Swimming Club, 40-41; Red Cross, 41-42; Interfraternity Council, 41-42.

MARJORIE STANFIEL

Chi Rho Sigma, 40-41; Freshman President, 41-42, President; Interfraternity Council, 40-41, 41-42, Vice-President; Debate Club, 41-42; GATEWAY, 40-41, Business Manager, 41-42, Editor; *Flambo* 40-41, Business Manager; P. S. A. 40-41, 41-42; Superlatives, 40-41; Ideal Freshman Girl; 41-42, "Miss Junior College"; First Homecoming Banquet, 41-42, Chairman and Toastmaster; Red Cross, 41-42; President, May Day Court, 41-42; Cat Club, 41-42.

ELIZABETH TOMPKINS

Sophomore Class, President 41-42; Delta Alpha Delta, 40-41, Vice-President of Freshman; 41-42, Vice-President; Debate Club, 41-42; Student Council, 41-42; Junior Collegiate, 41-42, Society Editor; B. S. U., 40-41, 41-42; Interfraternity Council, 41-42.

MARY JEAN THURMAN

Delta Alpha Delta, 40-41, 41-42; Sigma Pi Alpha, 41-42; B. S. U. 40-41, 41-42.

MYRTLE LORRAINE WALDRIF

Beta Beta Beta, 41-42; P. S. A. 40-41, 41-42, President; Debate Club, 41-42; Art Club, 40-41, 41-42.



Food!

... *Sophomores*

... The 1942 Gateway

BILL WATSON

Chi Rho Sigma, 41-42; Home Ec. Club, 41-42.

DOT WATSON

Home Economics Club, 40-41, 41-42, President.

HELEN MARIE WEILL

Student Council, 41-42.

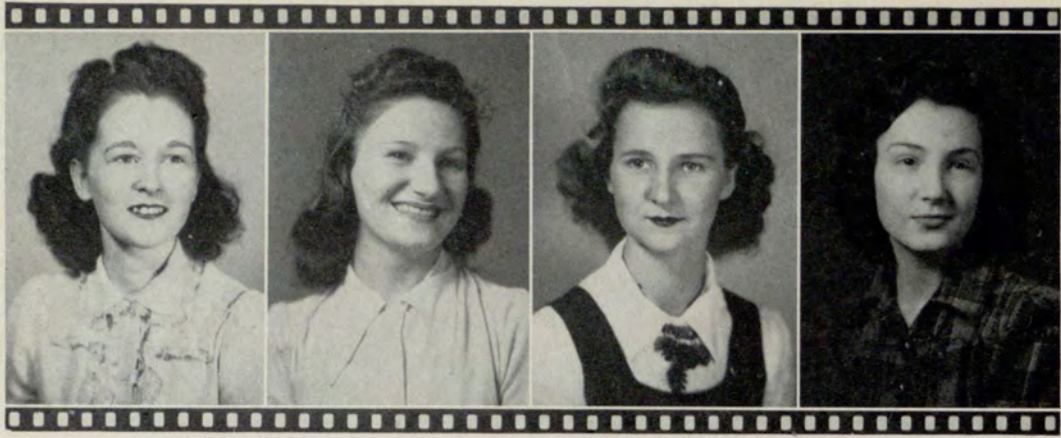
BEVERLY ANN WEST

Chi Rho Sigma, 41-42; Secretary Freshman Class, 40-41; Dramatic Club, 40-41; Sigma Pi Alpha, 40-41, Secretary Sophomore Class, 41-42; Methodist Student Group, 41-42, President; *Flambo*, 40-41.

FRANCES WILLIS

Delta Alpha Delta, 40-41, 41-42, Scribe; Home Ec. Club, 41-42; GATEWAY Staff, 41-42.





OUIDA WILLIS

Delta Alpha Delta, 40-41, 41-42.

MARTHA WINGATE

MARGARET ANNE WOMACK

Vice-President Sophomore Class, 41-42; Delta Alpha Delta, 40-41, Second Vice-President, 41-42, Treasurer; Debate Club, 41-42, Vice-President; Student Council, 41-42.

BETTY WOOTAN

Beta Beta Beta.



Chi Rho Sigma Dance

.. Sophomores

MINOR CHARACTERS



PUCKETT, RAGSDALE, HARPER

FRESHMAN OFFICERS

JACK RAGSDALE	<i>President</i>
MARY SUE HARPER	<i>Vice-President</i>
BESSIE SAYE	<i>Secretary</i>
ELIZABETH WEBSTER	<i>Treasurer</i>

Freshmen



EDNA ADLER	RAYMOND BROWN	BETTY CROWLEY
GENEVIEVE BARRETT	MARTHALYN BRUCE	ELSIE CRUTCHFIELD
ANN BEAUMONT	LAURENS CENTER	CAROLYN COX
DICK BELOTE	BETTY CHAMBERS	CAROLYN CULBERTSON
VIRGINIA BERRY	JANE CLEMENTS	LA VERNE CURTIS
JEANNE BATCHELLAR	ELAINE COLE	LILLIAN DANIEL
CAROLYN BROWNLEE	BILLIE COOGLER	EVELYN DAVIE

Freshmen

The 1942 Gateway

MARION DOOLEY

CAROLYN GAY

CARL HARDIN

JOANNA DOUGHERTY

ANN GARDNER

MARY SUE HARPER

TOM ESTES

MARTHA ANN GORMAN

MELBA HART

MARY FELL

MOZELLE GROSS

JEAN HEYDEN

BETTY FOOTINBERRY

HELEN HACKNEY

SYBIL JONES

JUNE FOWLER

MELBA HALE

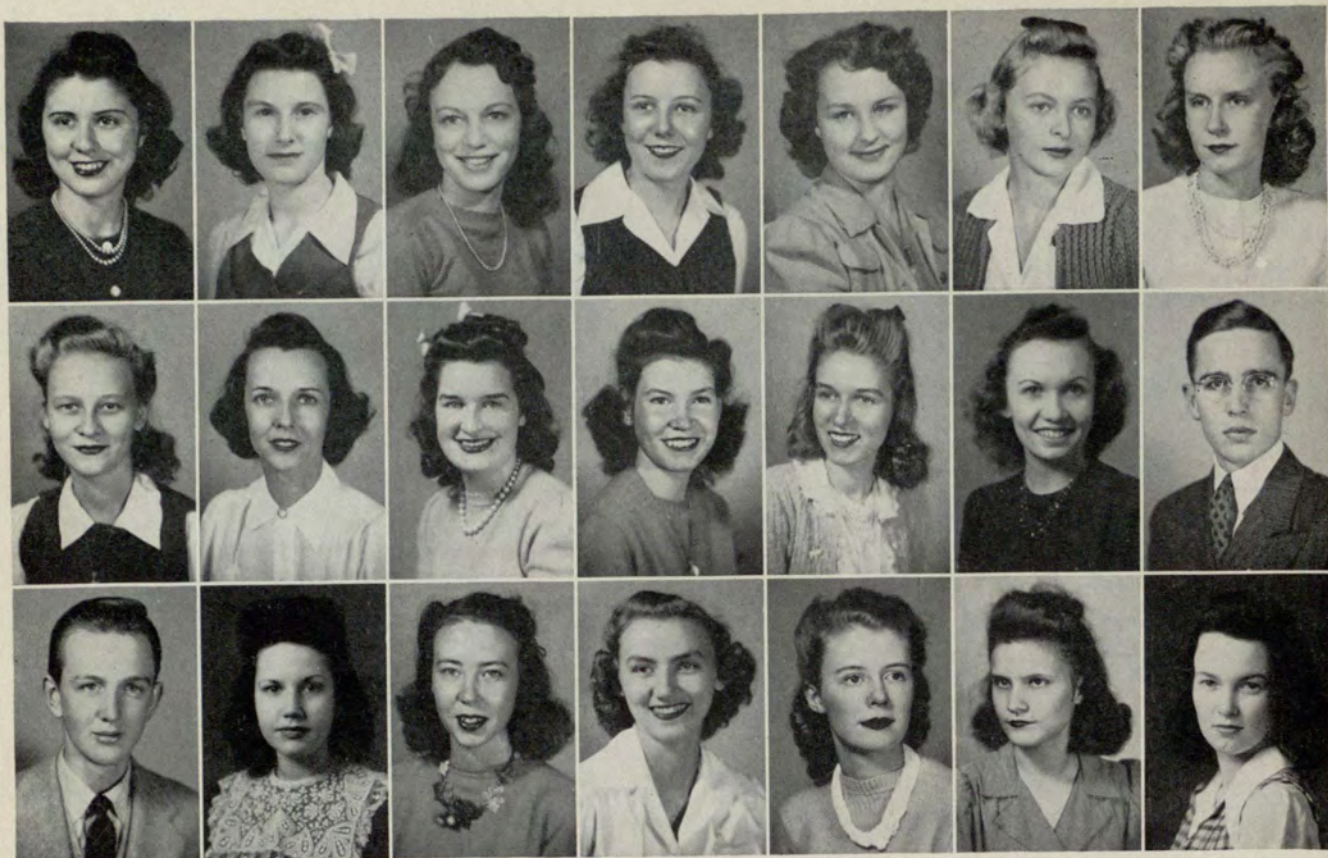
ELIZABETH KELLER

VERA FREEMAN

HARRIET HANNER

ANICE KILPATRICK





BETTY LAMONS	MARY NELL MURRELLE	IDWAL OWEN
PATRICIA LEVY	FLORENCE F. MCCOLLY	JANE PALMER
MARY ANN LINANE	MARGARET A. MCCOLSKY	MILDRED PALMER
ELIZABETH LINCH	COLLEEN MCCREA	ALICE LEE PENN
ANNIE MESLOSKI	JUNE MCCUMBER	DOROTHY PERRYMAN
MARGARET MORTON	JEAN MCKAMY	FRANCES PHILLIPS
BETTY MOUNTCASTLE	TRACY O'NEAL	MOLLY PUCKETT

Freshmen

The 1942 Gateway

JACK RAGSDALE

DOT SCOTT

CHARLES TURNER

HARRIET RICHARDSON

RUTH MARY SHADOW

JULIAN WALL

MADGE RIDDLE

MARJORIE SIMMONS

ELIZABETH WEBSTER

LOIS ROBERTS

PATRICIA SMITH

BETTY CHASE WHITMIRE

LYMAN ROGERS

MILDRED SPEARS

CHARLES WILSON

EDNA ROWLAND

WALTER STEARMAN

ELIZABETH WILLOUGHBY

BESSIE SAYE

DON STOUGHTON

BEVERLY ZERBST



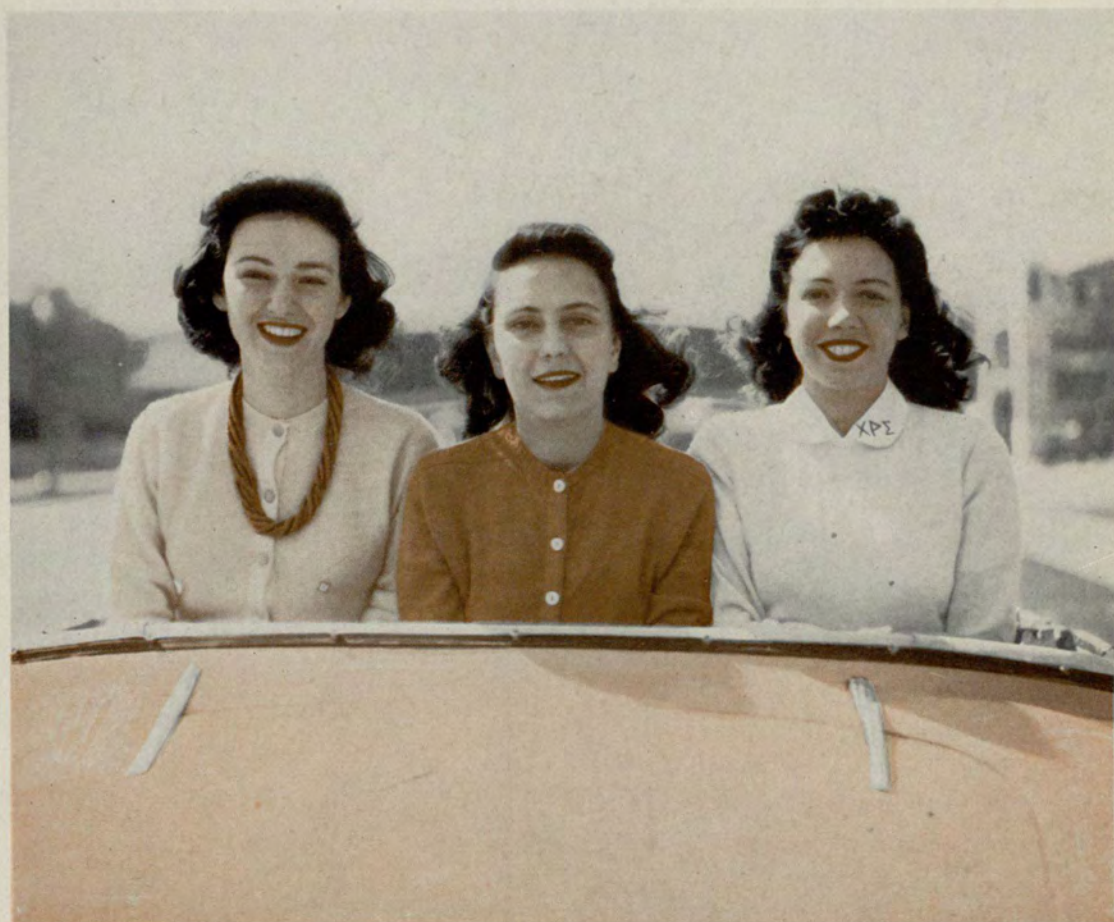
Here and There



D. A. D. Bridge
Singing
Basketball Huddle
Edgar
Joining up
Defense Supper



ADDED ATTRACTIONS



Shipp, Stanfiel, Litton

*Moments rich with pleasure and memory —
This is the Junior College in its lighter
moments*

Organizations

INTERFRATERNITY COUNCIL

THE INTERFRATERNITY COUNCIL is composed of representatives from each Junior College organization for the purpose of binding together all the clubs of the college into a closer and more cooperative relationship, and of regulating social functions given.



MARGERY HOVEY
President



MARJORIE STANFIEL
Vice-President



ETHEL SHIPP
Secretary



CAMILLE LITTON
Treasurer

GLORIA ALLGOOD
GENEVIEVE BARRETT
C. J. BROOME
ELSIE CRUTCHFIELD

JOANNA DOUGHERTY
FRANK DREW
NINA HILSMAN
ELEANOR HOSCH

CLYDE KIMBALL
MARGIE KINARD
BETTY LESTER
MARY ANN LINANE

TRACY O'NEAL
JACK RAGSDALE
FRANCES SPAIN
ELIZABETH TOMPKINS



STUDENT COUNCIL



JANE DEMPSEY
Vice-President

ELEANOR HOSCH
Secretary

BETTY LESTER
Treasurer

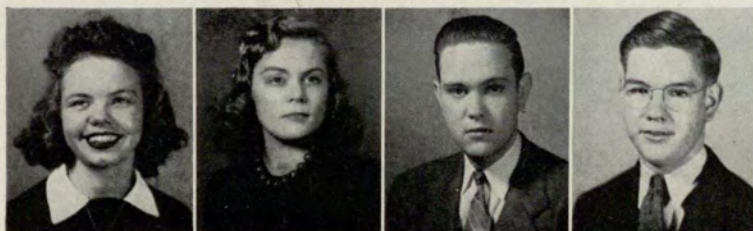
MRS. TROTTER
Faculty Advisor



CLYDE KIMBALL
President



ELIZABETH TOMPKINS
MARGARET ANN WOMACK
HELEN WEILL
SARA FLORENCE
JACK RAGSDALE
MARY SUE HARPER
HARRIET RICHARDSON
JANE PALMER



LORRAINE WALDRIP
NINA HILSMAN
FRANK DREW
WALTER STEARMAN

BETA BETA BETA



NINA HILSMAN
President



ANNETTE RICHARDSON
Vice-President



CAROLYN CULBERTSON
Treasurer



GLORIA ALLGOOD
Recording Secretary



MARGARET MORTON
Corresponding Secretary



MISS EUGENIA BRIDGES
Faculty Adviser

BETA BETA BETA

ANN BEAUMONT



MARIAN FISK



MARJORIE SIMMONS



MARY FELL



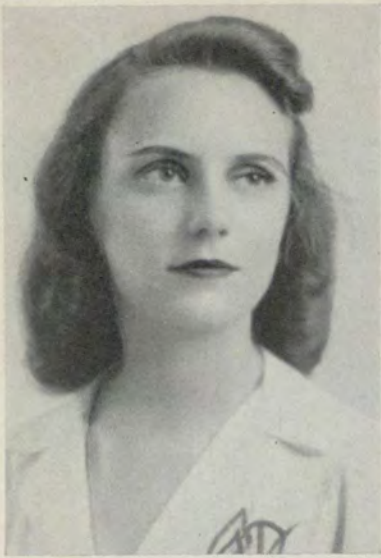
MARTHA LITTLEFIELD



LORRAINE WALDRIP



BETTY WOOTAN



MARJORIE STANFIEL
President

CHI RHO SIGMA

THE CHI RHO SIGMA SORORITY was organized in order to establish a feeling of friendship among its members; to insure trust, faith, and sisterly relationship in one another; and to foster consciousness of school spirit.



ELEANOR HOSCH
Vice-President



ANNE FRANKLIN
Secretary



ETHEL SHIPP
Treasurer



CAMILLE LITTON
Social Chairman



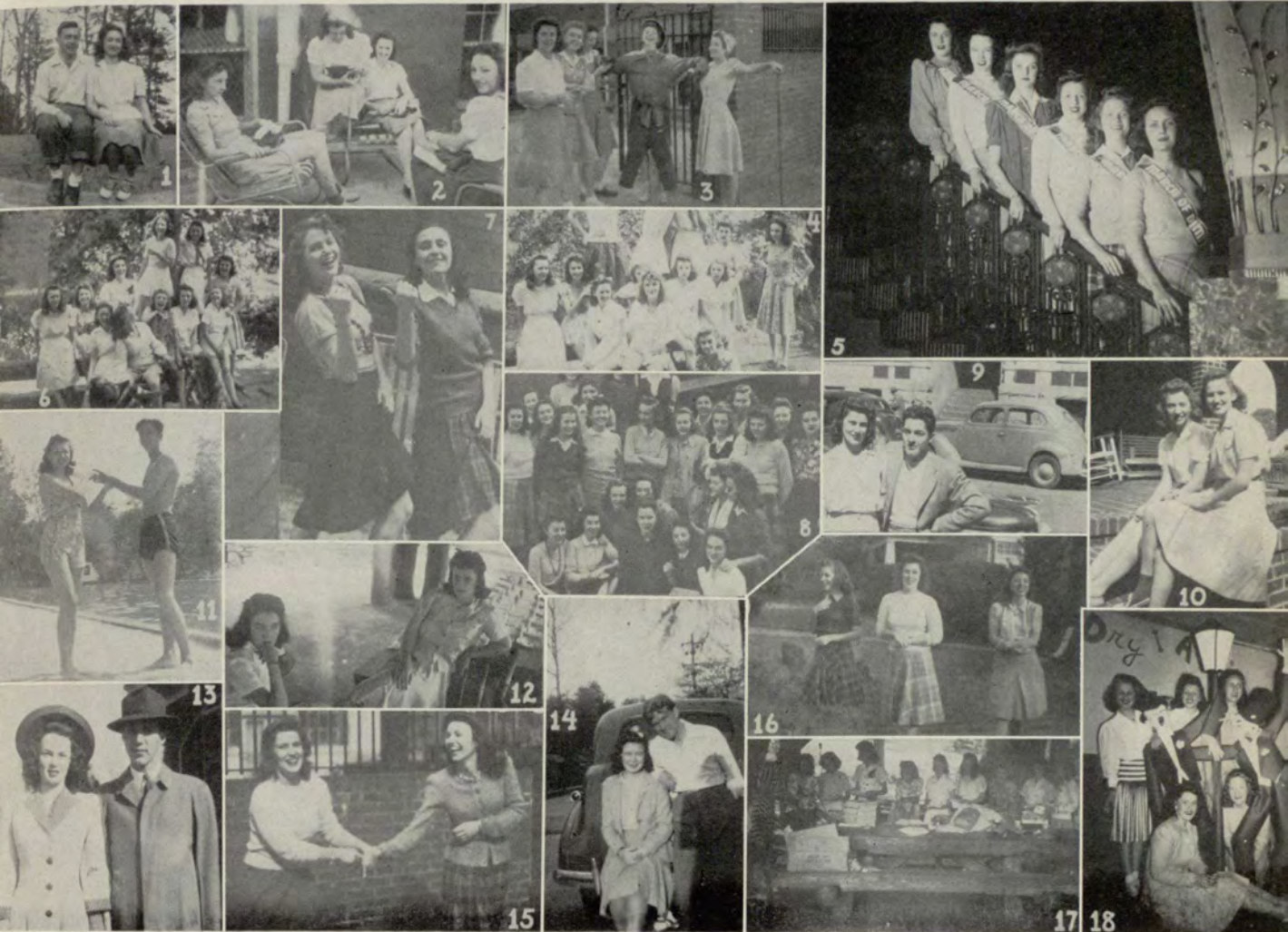
MARGERY HOVEY
Scribe



DR. WALKER
Faculty Adviser

CHI RHO SIGMA

Snapshots



1. Love
2. Cutting class
3. Playing with "Wilber"
4. Steak Fry
5. March of Dimes
6. Going nuts!

7. Going places?
8. Rushing
9. Anne and Pete=More Love
10. Betty and LaRue
11. Summer Fun
12. Hungry

13. Easter Parade
14. These gals with dates!
15. Spring Holidays!
16. Eleanor, Anne, and Camille
17. "Bread Line"
18. "Wild Life" Dance



EDNA ADLER
 BETTY CROWLEY
 EVELYN ELLINGTON
 GENEVIEVE BARRETT
 ELSIE CRUTCHFIELD

JUNE FOWLER
 ANN BETTS
 LA VERNE CURTIS
 ANN GARDNER
 ELAINE COLE

LILLIAN DANIEL
 TINY GRIZZELL
 BILLIE COOGLER
 EVELYN DAVIE
 MOZELLE GROSS



CHI RHO SIGMA

SYBIL JONES
MARGIE KINARD
BETTY LAMONS
BETTY LESTER



MARY ANN LINANE
ELIZABETH LINCH
LARUE McDUFFIE
BETTY O'KELLY



DOROTHY PERRYMAN
MOLLY PUCKETT
HARRIET RICHARDSON
LOIS ROBERTS



RUTH MARY SHADOW
NATALIE SHUMATE
MILDRED SPEARS
DON STOUGHTON



BILL WATSON
BEVERLY ANN WEST
BETTY CHASE WHITMIRE
ELIZABETH WILLOUGHBY



KAPPA ALPHA CHI



JOANNA DOUGHERTY
President



CAROLYN BROWNLEE
Vice-President



FRANCES PHILLIPS
Secretary



JANE CLEMENTS
Treasurer



COX
KELLER



CANTER
PORTWOOD



HUNT
SMITH



MC COLLEY
MRS. HARRY MCCOLLY
Sponsor

CAROLYN COX
LAURENS CENTER
JUNE HUNT
ELIZABETH KELLER
ELEANOR PORTWOOD
PATRICIA SMITH

DELTA ALPHA DELTA



JANE DEMPSEY
President

THE PURPOSES of this Sorority are: to perfect, and in daily life, to carry out the meaning of sisterhood; to try ourselves to reach the highest standards possible, physically, mentally, and morally; and to be forgetful of self and mindful of others.

ELIZABETH TOMPKINS
Vice-President

MARGARET ANN WOMACK
Treasurer

FRANCES WILLIS
Scribe

SARA FLORENCE
Pledge Captain



DELTA ALPHA DELTA



MARTHALYN BRUCE
BETTY FORTINBERRY
MELBA HALE

MARIE HAMMOND
HARRIET HANNER
MARY SUE HARPER
JEAN HEYDON

PEGGY HUDGINS
ANICE KILPATRICK
JUNE McCUMBER



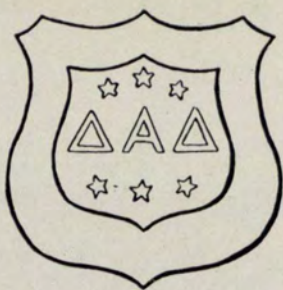
BRUCE
HARPER

FORTINBERRY
HEYDON

HALE
HUDGINS

HAMMOND
KILPATRICK

HANNER
MC CUMBER



BETTY MOUNTCASTLE
JANE PALMER

MILDRED PAYNE
ALICE LEE PENN

MADGE RIDDLE
RUTH SANE

BESSE SAYE
MARY JEAN THURMAN

OIDA WILLIS
BEVERLY ZERBST

JUNE MCKAMY



PHI SIGMA ALPHA



TRACY O'NEAL
President



THE PURPOSE OF PHI SIGMA ALPHA is:

To promote ideals of intellectual achievement through the pursuit of truth.

To establish a perpetual fellowship.

To elect into our brotherhood men of good character and outstanding leadership who will work with the interest of our institution at heart, and who will promote in any way possible those things which will be to the advantage and advancement of our College.

DICK BELOTE
Secretary



C. J. BROOM
Treasurer



MARJORIE STANFIELD
Sponsor



DR. LeCONTE
Faculty Adviser



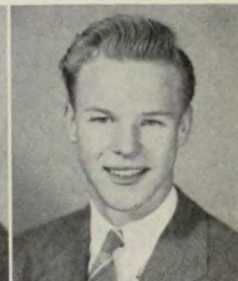
CARL HARDIN



LYMAN ROGERS



JULIAN WALL



CHARLES WILSON

SIGMA PI ALPHA



FRANCES SPAIN
*Secretary and
Treasurer*



FRANK DREW
*Interfraternity Council
Representative*



DR. WALKER
Faculty Adviser



MARION FISK
President

THE SIGMA PI ALPHA was organized in 1937. It is composed of the 15 per cent. of the student body who have the highest scholastic average. The scholastic requirements are: an average of B

plus both for the current quarter and for the grand average.

Keys are awarded to those members who are elected to Sigma Pi Alpha for four consecutive quarters, and who have been active in school affairs.

GLORIA ALLGOOD

ANNETTE GODBEE

ELEANOR HOSCH

ANICE KILPATRICK



PATRICIA LEVY

JANE PALMER

JACK RAGSDALE

MILDRED SPEARS



HARRIET HANNER
President



MARION FISK
Vice-President



GLORIA ALLGOOD
Secretary and Treasurer



MRS. HOSMER
Faculty Adviser



FLORENCE COPPEDGE
MARIE HAMMOND
FRANCES PHILLIPS
LORRAINE WALDRIP



DEBATE CLUB

BESSIE SAYE
ANICE KILPATRICK
WALTER STEARMAN
JUNE McCUMBER
MILDRED PAYNE

VERA FREEMAN
HARRIET HANNER
JEAN HEYDON
MARY SUE HARPER
WINDY KIMBALL

JEAN MCKAMY
JANE PALMER
ELIZABETH TOMPKINS
MARJORIE STANFIEL
OUIDA WILLIS

OFFICERS

JANE DEMPSEY . . . *President*
MARGARET ANN WOMACK, *V.-Pres.*
JACK RAGSDALE . . . *Secretary*
MELBA HALE . *Publicity Chairman*

Faculty Advisers
MRS. TROTTER
MR. BROWN



DRAMATIC CLUB



MISS BRIDGES
Faculty Adviser



BETTY LESTER
President



BETTY CROWLEY
CAROLYN CULBERSON
ANICE KILPATRICK
WINDY KIMBALL
GERALD MARTIN
LYMAN ROGERS
OUIDA WILLIS



CLYDE KIMBALL
President

BAPTIST STUDENT UNION

GERALD MARTIN
First Vice-President

LILLIAN DANIEL MOLLY PUCKETT
Second Vice-President

ANICE KILPATRICK MARGIE KINARD
Third Vice-President Secretary and Treasurer



ELIZABETH TOMPKINS
CAROLYN BROWNLEE
BESSIE SAYE
MELBA HALE
JANE PALMER



GLEE CLUB



GLORIA ALLGOOD
President



JANE PALMER
Vice-President



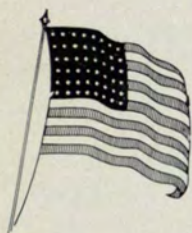
ANICE KILPATRICK
Secretary



ANNIE MESLOSKI
Librarian



ELSIE CRUTCHFIELD, MOZELLE GROSS, CHARLOTTE METHVIN, DOROTHY DURLING
JEAN MCKAMY



WILLIAM MANLY CHAPTER AMERICAN RED CROSS



OFFICERS

MARJORIE STANFIEL . . . *President*
ELEANOR HOSCH . . . *Vice-Pres.*
MARGERY HOVEY . . . *Secretary*
WINDY KIMBALL . . . *Treasurer*
BETTY LESTER . . . *Chairman*
MARY SUE HARPER . *Co-Chairman*

HOSCH, HOVEY, LESTER, STANFIEL, and HARPER

HOME ECONOMICS CLUB



EVELYN ELLINGTON
Vice-President



BILL WATSON
Secretary and Treasurer



BETTY O'KELLY
Representative



DOT WATSON
President



ELEANORA ADAMSON

ANN BETTS

FLORENCE COPPEDGE

VIRGINIA DAVIS

EDNA MCNAIR



CALOMINA PAPAGEORGE

FRANCES PHILLIPS

RUTH SANE

FRANCES WILLIS

OUIDA WILLIS



WINDY KIMBALL
President

DICK
BELOTE

ROBERT
DAVIS

TOM
ESTES

JACK
RAGSDALE

JULIAN
WALL

CHARLES
WILSON

TYTHENIAN

TYTHENIAN SOCIETY (a telescopic arrangement of the words Tyro and Demosthenes which means "amateur speaker") has as its objectives: Improvement of speech, development of ideals, extension and dissemination of knowledge, and the formation of friendships. The society is in its third year. It was organized with thirty Junior College men students and four members of the faculty.



WALTER STEARMAN
Secretary



CARL HARDIN
Treasurer



C. J. BROOM
Publicity



PROF. E. H. EMORY
Faculty Adviser



T. M. MCCLELLAN
Faculty Adviser



DR. JAMES ROUTH
Faculty Adviser



BELOTE



DAVIS



ESTES



RAGSDALE



WALL



WILSON

JUNIOR COLLEGIATE



ELSIE CRUTCHFIELD
Assistant Editor



JACK RAGDALE
Advertising Manager



ELIZABETH THOMPKIN
Society Editor



PEGGY HUDGINS
Editor



CAPTAIN LAYTON
Faculty Adviser



RUTH BARRON
Staff Photographer



DOT SCOTT



MOZELLE GROSS



C. J. BROOM



ANN BEAUMONT



MARJORIE STANFIEL
Editor

GATEWAY STAFF



ETHEL SHIPP
Business Manager



BETTY LESTER

DICK BELOTE

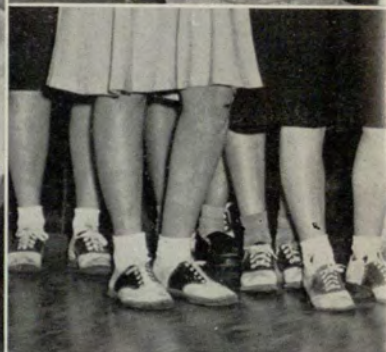
FRANCES WILLIS



CAPTAIN LAYTON
Faculty Adviser

All the GATEWAY can do is jolt your memory a bit with camera highlights and a bit of blithe copy.

Comedy



1. Farmer's Ball Scarecrows
2. Modest Chi Rho Sigma president
3. Snow fight
4. "Mama" Hosch
5. "Liz" Tompkins
6. Bottoms up!
7. The weaker sex
8. Saddle oxfords
9. "Meow!"



*set ad for @
for Atlanta*

*Save
body*

BOARD OF REGENTS
UNIVERSITY SYSTEM OF GEORGIA

Has enlarged Atlanta's educational facilities
for Atlanta Graduates

You may enter the Junior College for day classes
or the
Evening College for classes after business hours

UNIVERSITY SYSTEM CENTER

162 LUCKIE STREET, N. W.

ATLANTA

GEORGIA

~~500 College faculty members, 2100 students~~

For Your
Pleasure and Convenience
We Sell

ICE COLD COCA-COLA
ARISTOCRAT MILK . . . GORDON'S POTATO CHIPS
DR. PEPPER . . . "7" UP
JONES' PURE FRUIT JUICE . . . KRISPY KREME DOUGHNUTS
CRISWELL'S PIES and CAKES . . . HILL'S SANDWICHES
CANADA DRY GINGER ALE . . . SUNSHINE FRUIT JUICES
HIRSCH'S CANDY . . . OLD'S ICE CREAM

. . . HOT FOODS . . .
"CAMPBELL'S" TOMATO SOUP and "BAILEY'S" SUPREME COFFEE

We Recommend These Products To Our Students

"THE REFECTORY"

BOOKSTORE

ATLANTA JUNIOR COLLEGE

TEXT BOOKS

PHOTO-ALBUMS

SUPPLIES

CLIP-BOARDS

FOUNTAIN PENS

STICKERS

COLLEGE OUTLINES

PENNANTS

PLACE YOUR ORDERS HERE FOR "BEST SELLERS" OR
ANY OTHER BOOK IN PRINT.

In Business Since 1884

Building Material . . . Lumber
. . . Millwork . . . Electrical
Fixtures . . . Hardware . . .
Paint . . . Ready-Mixed Con-
crete . . . Furnaces and Heat-
ing Equipment.

CAMPBELL COAL CO.

For Action Call Jackson 5000

"Meet Your Friends"

at

STANDARD DRUG CO.

"Up the street from the college"

YOU ARE ALWAYS WELCOME

MRS. HILL'S SANDWICHES

FRESH, DELICIOUS, SATISFYING

Sold in
THE REFECTORY

Headquarters—ALL RADIOS

ALL MAKES OF PHONOGRAPH RECORDS

BAME'S INC.

60 North Broad St.

MAin 5776



**Sportsman's Headquarters
in Atlanta**

Bicycles and Supplies — Sporting Goods
Athletic Goods — Fishing Tackle
and Children's Vehicles

TOYS

WHOLESALE and RETAIL

WALTHOUR & HOOD CO.

Pryor St. at Auburn Ave.

Ma. 7137

B O W L . . .

The Right Way
at

BLICK'S

4 CONVENIENT CENTERS

BOWLING PALACE

Briarcliff Plaza

LUCKY STRIKE

671 Peachtree Street

KING PIN

840 Gordon Street

***BOWLING CENTER**

Top Floor Belle Isle Garage

(*Largest One-floor Alley in the World)

100 — SANCTIONED ALLEYS — 100

Now the favorite sport of Atlantans
. . . bowl regularly for competition,
fun and health.



GOLD SHIELD

Launderers and Cleaners

TRIO

AMERICAN

PIEDMONT

CAPITAL CITY

DECATUR

MAY'S

TROY

GUTHMAN

EXCELSIOR

Atlanta, Georgia

Compliments

of

J. C. DUGGAN

OPTOMETRIST

R. A. CHRISTOPHER

King of Recorded Swing

If You Swing Give Chris a Ring

WAlnut 4289

Congratulations

Graduates

from



29 BROAD ST., S. W.

ATLANTA'S OLDEST
JEWELRY STORE

Operated

Continuously

Under One Name

*"This is the way
to feel refreshed"*



Pause at the familiar red cooler for ice-cold Coca-Cola. Its life, sparkle and delicious taste will give you the real meaning of *refreshment*.

Atlanta home of Metro-Goldwyn-Mayer
and United Artists Pictures.

LOEW'S



MARCUS'

62 PEACHTREE

61 N. BROAD

*"is where the best and most stylish Men's
Wear is bought at the best price . . ."*

and is payable—1/3 in 30 days, 1/3 in 60 days,
and 1/3 in 90 days.

ESTABLISHED 1908



MASTER PRINTERS

HARRY BARFIELD CO.

*"South's Largest Producers of One-Time
Carbon Forms"*

ATLANTA

GEORGIA

HARPER'S

COLONIAL

FLOWER

SHOP

1094 PEACHTREE ST., N. E.

HEMLOCK 1181

SINCE 1885

COAL - FURNACES - STOKERS

LUMBER - MILLWORK

RANDALL BROS. Inc.

GENERAL SPECIALTY COMPANY

Manufacturers and Distributors

Banners, Pennants, Flags, Felt Novelties, Plain
and Fancy Embroidery Chenille and Felt
Letters and Emblems, Celluloid Buttons and
Badges, Gold and Silver Embossing, Art Work,
Designers, Posters.

72 Broad St., N. W.

WAlnut 5127

ATLANTA, GEORGIA

ARISTOCRAT

DAIRY PRODUCTS COMPANY

MAin 3453

165 Haynes St.

Compliments of

DR. L. N. HUFF

"It's All in the Examination"

Ansley Hotel

Just around the corner from the Georgia Junior College.

Ideally located for Fraternity, Sorority and
other organizations' banquets, dinners, etc.

L. S. TUCKER, Manager

~~Wherever~~ *Ride*
~~Whenever~~ *Our Buses*
Monday thru Thursday
and save
the weekends for
Our Boys in the Service.
—there is a motor bus ready to take
you there . . . with comfort
and economy

For Information Call WALNUT 6300

GREYHOUND

BUS DEPOT of Atlanta

HOUSE OPTICAL COMPANY

Better glasses by oculist's prescriptions.
We carry the latest styles in frames
and the corrected-curve lens which
gives you greater marginal vision. Ask
your doctor about our service.

34 WALTON STREET, N. W.

WALNUT 5227

JACKSON 7181

Open All Night

Davis Brothers Restaurant

SPECIAL SUNDAY DINNERS

Moderate Prices

104 LUCKIE ST.

ATLANTA, GA.

UNIVERSITY GRILL

Across street from school

Baked Ham 15c—Chopped Steak 12c
Cheeseburger on Toasted Buns 12c
Hamburgers and Hot Dogs 6c

Courteous Service at All Times

Compliments of



A Red Truck on Every Package

LOOK FOR IT





We wish to express our appreciation to the advertisers who have helped to make this book possible. Please give them your patronage.



Ah! At last we can relax.





SUCCESSFUL ANNUALS

Require the services of experienced and expert craftsmen, trained in every detail of the processes of creating • planning layout and design • typesetting • printing lithographing and binding ... Throughout half a century this company has pioneered in the production of the highest type of printing ... Our services include a special college annual sales and service organization ... Abundant equipment • modern and complete ... Prices representing maximum in value



FOOTE & DAVIES

PRINTING • LITHOGRAPHING • ENGRAVING

ATLANTA

Wa 4636 -

LIBRARY USE ONLY

DATE DUE

XXXXXX
JUN 19 1939
XXXXXX

12.50

12.50

35.00

Grady Powell

Lane - Adm.

12.50 - ?

Harper

12.50

Banks - San Gordon C.S.

Airtacat

3.50

Trust Co of Ga - ^{Bot.} Shuckland

Gordon

4.00

12.50

Atlanta Gas Co - Carl Walfe

Greyhound

Campbell Wal #1102 12.50

School Ads

Blair

8.50

Montag

Gordon
Hells

3.50

25.00
 35.00
25.00
 85.00

M
 20
20
 40

M
 35
20
 55

35 - 32.50 = 32.50
10 17.50 12.50
 45 50.00 47.50
 35.00
12.50
 47.50

\$ 55.00

