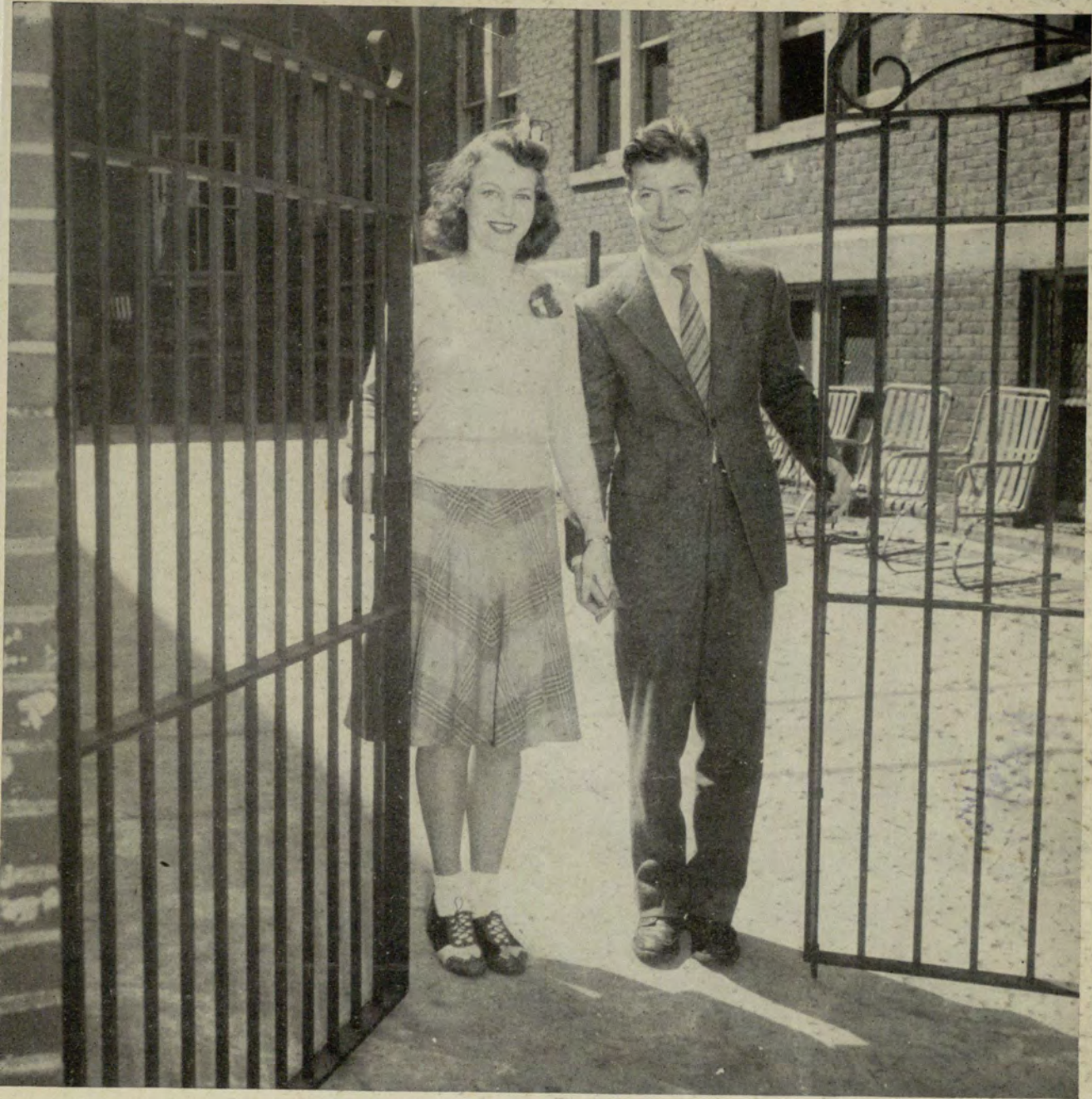


The
GATEWAY
1943





THE 1943 GATEWAY

Published by

THE STUDENT BODY

of the

ATLANTA JUNIOR COLLEGE

ANNIE PERRY NOWELL
Editor

JEAN MCKAMY
Associate Editor

SUE ROBINSON
Business Manager

ELSA O'CALLAGHAN
Picture Editor

DEDICATION



Prof. R. A. Christopher

To "Chris" the "King of the Refectory," and the King of the heart of every Junior College student, we dedicate the 1943 edition of the Gateway.

Your understanding and your ever present desire to help, your eager smile and quick humor have endeared you to all students, and, wherever you go, may you carry with you the thought that the spirit you have injected into this institution will live for years to come.

Kenneth England

F O R E W O R D

Another great war is upon us, another trying era of rehabilitation will follow, and our wish is that this book may, through its stimulation of cherished memories, bring a much-needed spark of happiness into the lives of its owners.

The purpose of a college annual is to commemorate in the minds and hearts of its readers the spirit of by-gone days. This year even more than in the past, the staff's aim has been centered on the more serious, more lasting aspects of our school life.

This year book is to be forwarded to all those former Junior College students who are now serving in the armed forces, and it is the staff's desire that it will keep fresh the memories of home.

FACULTY

GEORGE M. SPARKS, A.B., M.A., LL.D.
Director

Mercer University; Graduate summer
work, Oxford, England

T. M. McCLELLAN, B.S.C., M.S.C.
Secretary and Registrar
Georgia School of Technology;
Graduate work, New York University

NELL HAMILTON TROTTER, A.B., M.A.
University of Arkansas;
University of Wisconsin
Dean of Women

RABUN L. BRANTLEY, A.B., M.A., Ph.D.
Mercer University;
George Peabody College for Teachers
Dean of Men

ROBERT L. BELL, A.B.
Emory University Graduate School;
Emory University Medical School

JESSE CARLTON BROWN, B.S.E.E., B.C.S.
Georgia School of Technology;
University System of Georgia
Evening College

NAN BRYAN, A.B., M.A.
University of Illinois

ELMER G. CAMPBELL, A.B., M.S., Ph.D.
Hiram College of Ohio; Purdue
University; University of Chicago

R. A. CHRISTOPHER, B.S.C.
University of Georgia

JENNIE S. HOLLINGSWORTH, B.S.M.A.
Kansas State College; Teachers' College,
Columbia University; University of
Wisconsin; University of California;
University of Chicago



FACULTY



R. R. HOLLINGSWORTH, B.A., M.A., Ph.D.
University of Washington; Teachers College of Columbia University; University of North Carolina Graduate Work; University of Chicago, and University of Southern California.



MADELINE HOSMER, A.B.
Fine Arts Certificate,
Washington University;
St. Louis School of Fine Arts



HAL HULSEY, A.B., M.A.
University of Georgia; Graduate work,
University of Georgia; Emory University



PICKETT HYNES, B.C.S.
Emory University; University of Georgia;
Georgia-Evening College



V. V. LAVROFF
Junior College, Harbin, China;
B.S.C., M.A., Georgia School of
Technology; Emory University

MJR. WILLIAM P. LAYTON, B.Ph.
Emory University



CARL MAUELSHAGEN, A.B., M.A., Ph.D.
University of Tennessee; University of
Chicago; University of Minnesota

JAMES E. ROUTH, A.B., Ph.D.
Johns Hopkins University

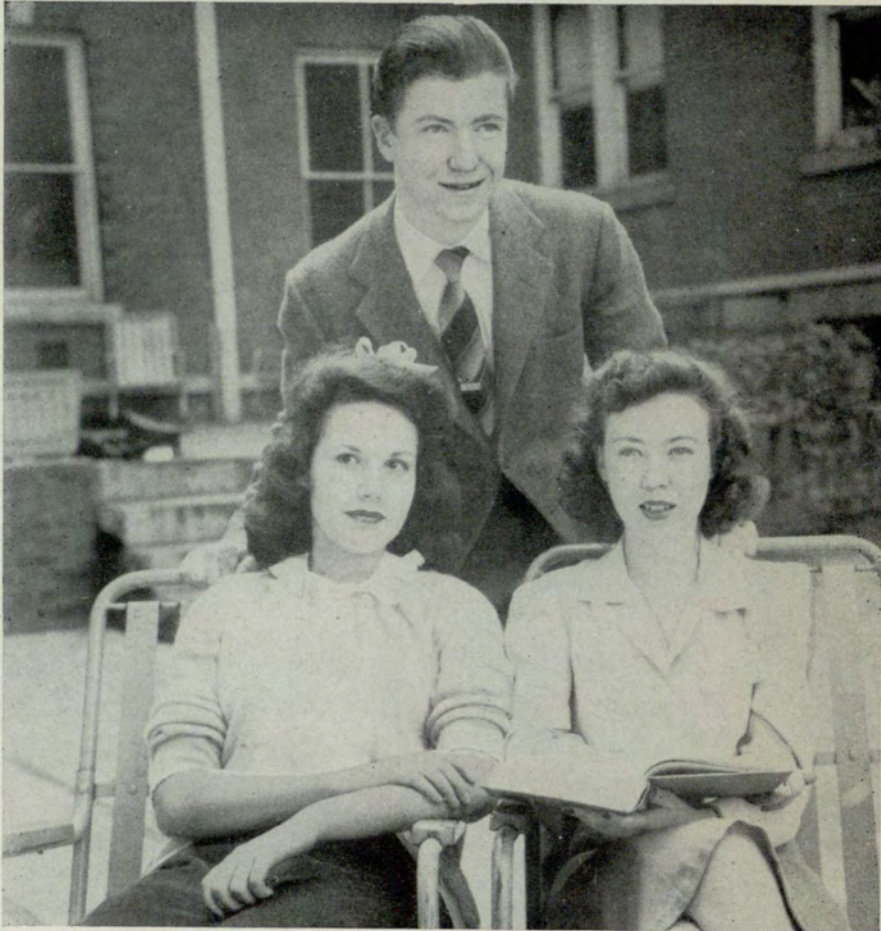
LINNIE TALLANT, R.N.



MERLE WALKER, A.B., M.A., Ph.D.
Hollins Institute; Radcliffe College;
Harvard University

HELEN BEAM, A.B., A.B.L.S.
University of Georgia; Emory University

SCHOOL OFFICERS



PALMER, RAGSDALE, PAYNE

JACK RAGSDALE	<i>President</i>
JANE PALMER	<i>Vice-President</i>
MARY SUE HARPER	<i>Secretary</i>
MILDRED PAYNE	<i>Treasurer</i>

Sophomores



RICHARDSON, STEARMAN, KILPATRICK, SPEERS

WALTER STEARMAN	<i>President</i>
ANICE KILPATRICK	<i>Vice-President</i>
ANNETTE RICHARDSON	<i>Secretary</i>
MILDRED SPEERS	<i>Treasurer</i>

Sophomores



BILL BARNWELL
Superlative, 42-43.

MARGUERITE BARTON

MARGIE BLAIR
Assistant Physical Education Instructor.
Superlative '43.

BILLIE COOGLER
Chi Rho Sigma, 41-42, 42-43, Dramatic Club, 41-42.

CAROLYN COX
Kappa Alpha Chi, 41-42; Dramatic Club 42-43.

MALISSA COX

MARIAM CRAWFORD
Chi Rho Sigma, 42-43.

ELSIE CRUTCHFIELD
Religious groups, 41-43; Glee Club, 41-43; Assistant editor, Junior Collegiate, 41-43; Editor, Junior Collegiate, 42-43; Chi Rho Sigma, Vice-President, 42-43; Inter-fraternity Council, 42-43; May Court, 42-43.

CAROLYN CULBERTSON
Art Club, Tri Beta, B.S.U., Inter-fraternity Council, 42-43.

TOM ESTES
Tythenian, Debate Club, 42-43, B.S.U.

Sophomores

VERA FREEMAN

Chi Rho Sigma 41-42, 42-43 Secretary; Debate Club Publicity Chairman; Glee Club, 41-42; Inter-Fraternity Council President 42-43; Dramatic Club 42-43; May Court 43; Superlatives 42-43.

JANE GANN

Chi Rho Sigma

MARTHA GORMAN

Art Club, 41-42.

MARY SUE HARPER

Red Cross Chairman, 41-42; B. S. U. 41-42, 42-43; Glee Club, 41-42; Debate Club, 41-42, 42-43; Vice-Pres. Freshman Class 41-42; Secretary Sophomore Class 42-43; Delta Alpha Delta 41-42; President 42-43; Inter-fraternity Counsel, 42-43.

MELBA HART

B. S. U., 41-42, 42-43; Debate Club, 41-42.

ANICE KILPATRICK

Delta Alpha Delta, 41-42; Secretary, 42-43; Debate Club, 41-42; Treasurer, 42-43; Vice-President; Glee Club Secretary 41-42; President, 42-43; B. S. U., 41-42; Vice-Pres. 42-43; Vice-Pres. Dramatic Club, 41-42; Vice-Pres. Sophomore Class, 42-43; Inter-fraternity Council, 42-43; May Queen, 43.

SARA LANCE

Delta Alpha Delta, 42-43; B. S. U., 41-42, 42-43.

MARY ANN LINANE

Chi Rho Sigma, 41-42; President 42-43; Inter-Fraternity Council, 41-42, 42-43, Dramatic Club, 42-43; Superlatives, 42-43; May Court, 43.

ELIZABETH LINCH

Chi Rho Sigma, 41-42; Treasurer, 42-43; Home Economic Club, 42-43; Debate Club Corresponding Secretary, 42-43; Dramatic Club, 42-43; Student Council, 42-43; Superlatives, 42-43; May Court, 43.

EDWARD LORD

Tythenian Club, 42-43; Superlatives, 42-43.



Sophomores



MARGARET MCCOLSKY

Debate Club, 41-42; B.S.U., 41-42, 42-43

JEAN MCKAMY

Debate Club, 41-42, 42-43 President; Glee Club, 41-42, 42-43; Secretary-Treasurer; B.S.U., 41-42, 42-43, Vice-President; Dramatic Club, 42-43; Delta Alpha Delta, 41-42, 42-43, Treasurer; Gateway, 42-43, Associate Editor; May Court; Student Council, 42-43; Interfraternity Council, 42-43.

CAROLYN MURPHY

Sigma Pi Alpha; Home Economics Club, 42-43.

JANE PALMER

Debate Club, 41-42, 42-43, Program Chairman; B.S.U., 41-42, 42-43, President; Glee Club, 41-42, Vice-President, 42-43, Librarian; Delta Alpha Delta, 41-42, 42-43, Vice-President; Sigma Pi Alpha, Key member; Vice-President of Sophomore; Student Council, 41-42, 42-43.

LARKIN PARRIS

Tythenian, 42-43.

MILDRED PAYNE

Debate Club, 41-42, 42-43, Treasurer; B.S.U., 41-42, 42-43; Council member; Delta Alpha Delta, 41-42, 42-43, Pledge captain, scribe; Home Economics Club, 41-42, 42-43, Secretary; Treasurer of school; Student Council, 42-43.

FRANCES PHILLIPS

Art Club, 41-42; Home Economics Club, 41-42, 42-43; Kappa Alpha Chi, 41-42, Secretary.

JACK RAGSDALE

Tythenian, 41-42, 42-43; President Freshman class; President Sophomore class; Student Council, 41-42, 42-43; Sigma Pi Alpha, Key member; Debate Club, 41-42, 42-43, Secretary; B.S.U., 41-42, 42-43; Junior Collegiate, Advertising Manager, Staff photographer; Gateway, 42-43, Photographer.

ANNETTE RICHARDSON

Tri Beta, 41-42, Vice-President, 42-43, Secretary; Secretary of Sophomore Class; B.S.U., 41-42.

CHARLES RIGHINI

Superlative, Most Athletic, 42-43; Sports Editor of Junior Collegiate, 42-43.

Sophomores

PHILLIP SHAEFFER

HARRIETTE SPEER

Delta Alpha Delta, 42-43; B.S.U., 42-43; Debate Club, 42-43;
Sigma Pi Alpha, 42-43.

MILDRED SPEERS

Chi Rho Sigma, 41-42, 42-43, Vice President; Treasurer of
Sophomores; Superlative, 42-43, Most Scholastic

WALTER STEARMAN

President of Sophomores; Treasurer of Freshmen; Student Council, 41-42, 42-43; Tythenian, 41-42, 42-43, President; Debate Club, 41-42, 42-43, Sergeant at Arms; B.S.U., 41-42, 42-43.

BESS STRICKLAND
B.S.U., 42-43.

ANN TRIBBLE
Chi Rho Sigma, 41-42, 42-43.

MYRTLE VINCENT
B.S.U., 41-42, 42-43; Dramatic Club, 41-42.

BETTY WHITMIRE
Chi Rho Sigma, 41-42, 42-43, Social Chairman;
Student Council, 42-43.

ALICE MAY WING
Chi Rho Sigma, 42-43; Dramatic Club, 42-43.



We Have Chosen These



Miss Junior College
MARY ANNE LINANE



Mr. Junior College
JACK RAGSDALE



Handsomest Boy
BILL BARNWELL

Most Beautiful Girl
VERA FREEMAN

Most Dependable Boy
TOM ESTES



Most Dependable Girl
ELIZABETH LINCH



Most Studious Boy
EDWARD LORD



Most Studious Girl
MILDRED SPEERS



Most Versatile Girl
KATHARINE O'CALLAGHAN



Most Versatile Boy
WALTER STEARMAN

As Our Best Freshmen



Outstanding Freshman Boy
BILL MALONE
Outstanding Freshman Girl
SUE ROBINSON



Most Athletic Girl
MARGIE BLAIR

Most Athletic Boy
CHARLES RIGHINI



Wittiest Girl
SARA RICHARDSON



Wittiest Boy
JIMMY SHACKLEFORD



FREEMAN, McNELLEY, RICHARDSON, TATE

And Their Officers

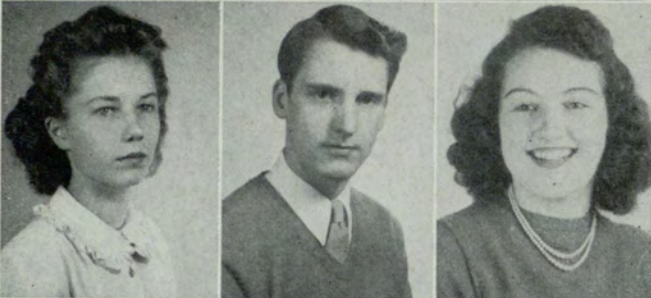
SARA RICHARDSON	<i>President</i>
LOURENE TATE	<i>Vice-President</i>
REBECCA FREEMAN	<i>Secretary</i>
EMILY McNELLEY	<i>Treasurer</i>

Freshmen



JAMES DONNIS ADERHOLD

MARY ELIZABETH ANDERSON



DOROTHY AYERS

GRAY BAKER

BILL BARGREN

DOROTHY BICKFORD



A. J. BOHN

BILLIE SUE BROWN

MARTHA BROWN



JUNE BOUGHTON

HESTER CAFFEY

JANE CHEEVES



EMILY CODINGTON

NICK DEMETRI COLEVINS

Freshmen

WALTER CRAWLEY

ELEANOR COX

BILL CROWLEY

DORIS DAVIS

LINDA DE BARDELABEN

RUTH EVERETTE

REBECCA FREEMAN

MARGIE FUSSELL

DOROTHY GAMBREL

MARY LOUISE HUGHES

BETTY IRVINE

ELIZABETH JAMES

HAROLD JOHNSON

CAROL JONES



Freshmen



HOWARD KILLINGSWORTH

BETTY KING

MARTHA LEE KING

NORMA KRAFT

GUY LONGSHORE

BILL MALONE

HENRY MALONE

JOYCE MAYFIELD

LETA VEN MCCORMICK

EMILY MCNELLEY

JAMES MOLLESON

JEAN MYERS

DAVID NELSON

ANNIE PERRY NOWELL

ELSA O'CALLAGHAN

Freshmen

KATHARINE O'CALLAGHAN

JOY OLSON

MARTHA PITTMAN

JIM POOLE

TINY QUINN

SARA RICHARDSON

SUE ROBINSON

JIMMY SHACKLEFORD

JOYCE SMITH

BETTY GRACE SPINKS

BERTHA NELL STROTHER

LOURENE TATE

BARBARA YARN

BILL WADDY

MURIEL VAN NOSTBAND





1. Dr. Patterson speaks at assembly on his trip to Africa.
2. You figure it out! We can't!
3. Weary feet! After a hike at the lodge.
4. Margie Blair, gym instructor, gives

- Myrtle Vincent her clothes for class.
5. "The healing touch." Mrs. Tallant, our R. N., doctors a wound.
6. Look for the birdie.
7. Crutch, alias "Paderewski."

Organizations



HARPER, PALMER, ROBINSON, OLSON, RICHARDSON, MCKAMY

Through these organizations the social and scholastic aspects of the school are bound together.

STUDENT COUNCIL



Composed of the student body officers and class officers, the Student Council is the connecting link between students and faculty at the Junior College. All school activities and student junctions are sponsored by the Council in cooperation with the faculty.

A few of the events under the direction of the Council this year were, a Lodge party, a Christmas party, and Freshman Orientation Week.

JACK RAGSDALE, *President*

JANE PALMER, *Vice-Pres.*

MARY SUE HARPER, *Secretary*

MILDRED PAYNE, *Treasurer*

WALTER STEARMAN

ANICE KILPATRICK

SARA RICHARDSON

JOY OLSON

LOURENE TATE

ELIZABETH LINCH

DOT BICKFORD

JEAN MCKAMY



SIGMA PI ALPHA

JACK RAGSDALE, *Key Member*

ANICE KILPATRICK, *Key Member*

JANE PALMER, *Key Member*

MILDRED SPEERS, *Key Member*

MARGIE FUSSELL

DOT GAMBRELL

JEANNETTE JORDON

HARRIETTE SPEERS

The Sigma Pi Alpha was organized in 1937. It is composed of the 15 per cent of the student body who have the highest scholastic averages. The scholastic requirements are: an average of B plus both for the current quarter and for the grand average.

Keys are awarded to those members who are elected to Sigma Pi Alpha for four consecutive quarters, and who have been active in school affairs.



DELTA ALPHA DELTA



Organized as a woman's fraternity to promote understanding, to enjoy the fellowship of one another, and to stand for the right, the decent, and the lawful.

Our purpose is to perfect, and in our daily lives carry out, the meaning of sisterhood. To try, ourselves, to reach the highest standards possible physically, mentally, and morally. To be forgetful of ourselves and mindful of others.

MARY SUE HARPER, *President*

JANE PALMER, *Vice President*

ANICE KILPATRICK, *Secretary*

JEAN MCKAMY, *Treasurer*

MILDRED PAYNE, *Pledge Captain*

DELTA ALPHA DELTA

DOT BICKFORD	MARGIE FUSSELL	MARTHA DRU MITCHELL
BILLY SUE BROWN	DOT GAMBRELL	JOYCE SMITH
DOT BRYANT	JEANETTE JORDON	HARRIETTE SPEER
HESTER CAFFEY	BETTY KING	BETTY SPINKS
JANE CHEEVES	MARTHA LEE KING	BERTHA BELL STROTHER
EMILY CODINGTON	SARA LANCE	

NOT PICTURED

HOPE BAYNES	HARRIETTE EARNEST
CHARLOTTE ELROD	BERNICE JONES
SHIRLEY KINMAN	



D . A . D .



1. "Hot Dogs" on Parade—Corley, McKamy, McColsky, Harper, Lance, Palmer.
2. Treasurer's chat with new members—Kinman, and Jones.
3. A sure cure for Home Sickness—D.A.D.

- Christmas party.
4. Just decorating for Ol' Saint Nick.
5. Three good reasons for attending the Bad Luck Dance Friday 13th.
6. Mary Sue says sunshine is a sure cure for all your ailments.

CHI RHO SIGMA

"We the members of Chi Rho Sigma pledge ourselves to a noble and kind sisterhood. We again pledge ourselves to constantly strive to ever be helpful, active, and ready to aid one another and mankind."—
The pledge and purpose of this organization, which also endeavors to attain higher ideals and promote achievement in the school life of Junior College students.

MARY ANN LINANE, *President*

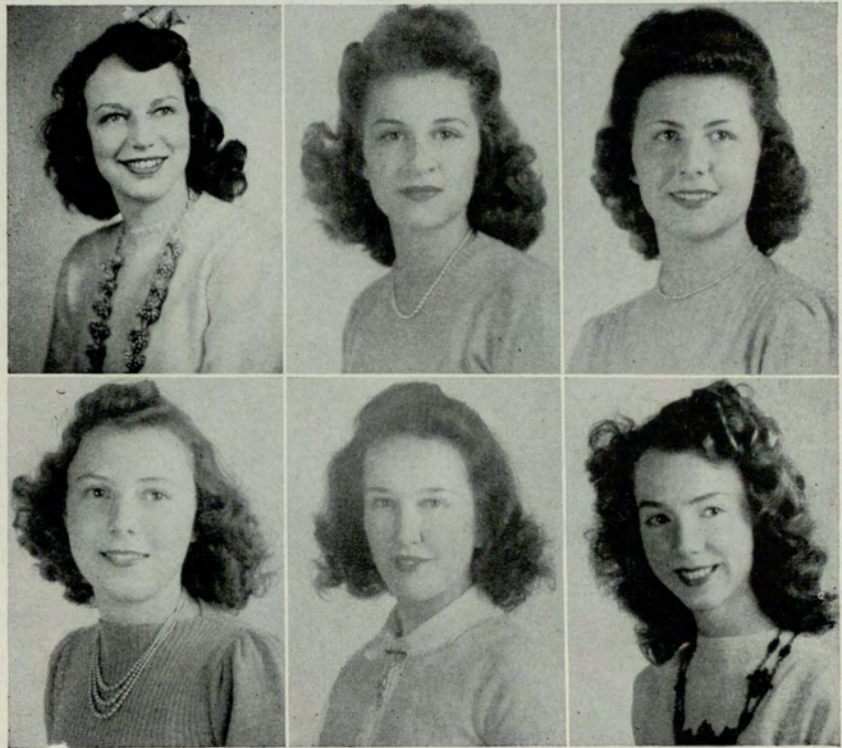
ELSIE CRUTCHFIELD, *Vice President*

VERA FREEMAN, *Secretary*

ELIZABETH LINCH, *Treasurer*

EMILY MCNELLEY, *Scribe*

BETTY WHITMIRE, *Social Chairman*



CHI RHO SIGMA



GRAY BAKER
 JUNE BOUGHTON
 MARGARET BROWN
 MARIAM CRAWFORD
 REBECCA FREEMAN

JANE GANN
 BETTY IRVING
 ELIZABETH JAMES
 CAROL JONES
 JOYCE MAYFIELD
 ANNIE PERRY NOWELL

ELSA O'CALLAGHAN
 KATHARINE O'CALLAGHAN
 JOY OLSON
 SARA RICHARDSON
 SUE ROBINSON
 MILDRED SPEARS

LOURENE TATE
 MARTHA PITTMAN
 ANN TRIBBLE
 BARBARA YARN
 MARTHA YOUNG

CHI RHO SIGMA



1. "Crutch" and Judson dream through a slow one!
2. Becky, "Crutch", and Emily beat the deadline.
3. Filling up the rushees.
4. Al and Mary Anne break through the

- lead-out wreath at the Chi Rho Sigma Christmas Formal.
5. Chi Rho Sigma president, Mary Anne Linane, congratulate the 3 outstanding freshmen, Lourene Tate, Sara Richardson, and Sue Robinson.
6. Chi Rho Sigma's play Santa Claus.

TYTHENIAN SOCIETY



WALTER STEARMAN, *President*

BILL WADDY, *Vice-President*

WALTER CORLEY, *Secretary*

JIMMY SHACKLEFORD, *Treasurer*

Tythenian Society (a telescopic arrangement of the words Tyro and Demosthenes which means "amateur speaker") has as its objectives: Improvement of ideals, extension and dissemination of knowledge and the formation of friendships. The society is in its fourth year. It was organized with thirty Junior College men students and four members of the faculty.

BILL CRAWLEY

TOM ESTES

LARKIN PARRIS

HAROLD JOHNSON

HOWARD KILLINGSWORTH

EDWARD LORD

BILL MALONE

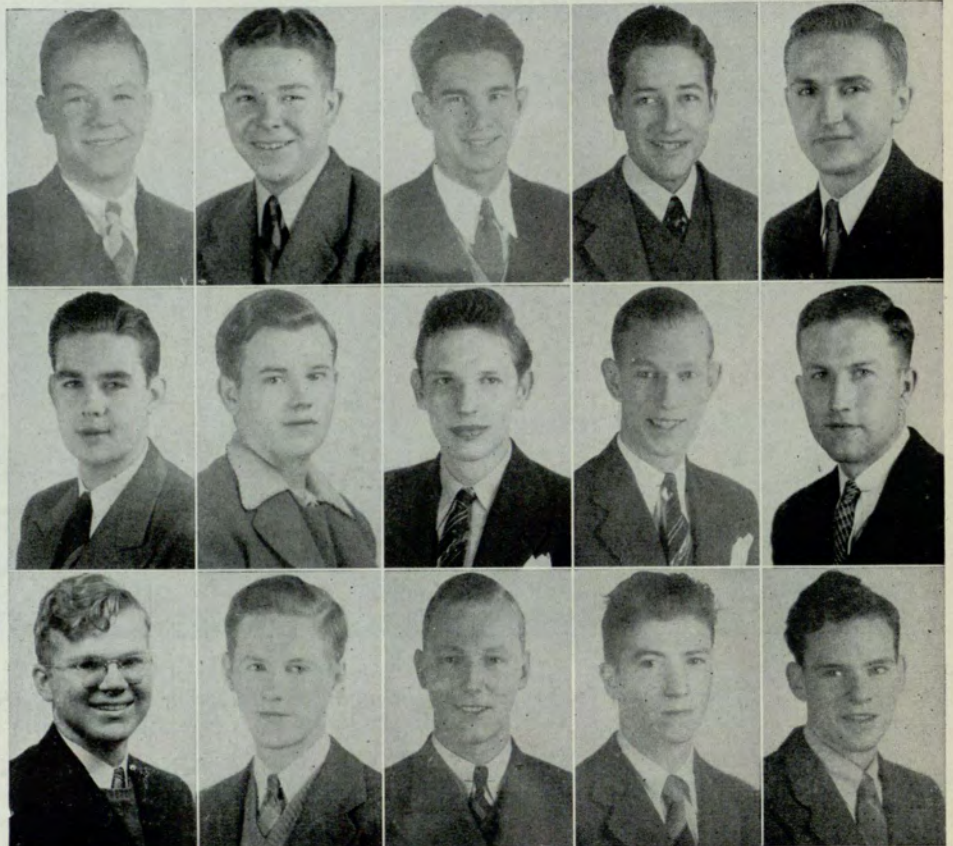
HENRY MALONE

JAMES MOLLESON

DAVID NELSON

JACK RAGSDALE

JIM POOLE



THE JUNIOR COLLEGIATE

ELSIE CRUTCHFIELD, *Editor*

EMILY MCNELLEY, *Assistant Editor*

JACK RAGSDALE, *Photographer*

CHARLES RIGHINI, *Sports Editor*

ANNETTE RICHARDSON, *Business Manager*

The Junior Collegiate is the school newspaper, published monthly and edited by a staff chosen from the student body.

The Collegiate, like most other publications of this type, strives to inform, analyze, and entertain—on a small scale.



MAJOR WILLIAM P. LAYTON

SARA RICHARDSON

JEANNETTE JORDAN

REBECCA FREEMAN

WALTER STEARMAN

LOURENE TATE



CROTCHFIELD
TATE

MCNELLEY
RICHARDSON

RAGSDALE
JORDAN

RICHARDSON
FREEMAN

RIGHINI
STEARMAN

Baptist Student Union



The affiliated religious group, under the leadership of the Baptist Student Union, is an organization which strives to co-ordinate Christianity with the college career through contact with interested religious leaders and alert young people.



JANE PALMER, *President*
 ANICE KILPATRICK, *First Vice-President*
 JEAN MCKAMY, *Second Vice-President*
 MARY SUE HARPER, *Secretary*
 BILL MALONE, *Chorister*
 DOROTHY GAMBRELL
 HESTER CAFFEY
 MELBRA HART

Dramatic Club

ELSA O'CALLAGHAN, *President*
 ANNIE PERRY NOWELL, *Vice-President*
 BILL BARGREN, *Secretary*



HESTER CAFFEY	BETTY IRVING	KATHARINE O'CALLAGHAN	LOURENE TATE
CAROLYN COX	MARY ANN LINANE	JOY OLSON	MURIEL VAN NOSTRAND
ELEANOR COX	JEAN MCKAMY	SARA RICHARDSON	BARBARA YARN
ELIZABETH LINCH	EMILY MCNELLEY	SUE ROBINSON	

Home Economics Club

The Home Economics Club was organized to foster and broaden the interests of Home Economics students. In this club we enjoy the fellowship of our co-workers, learn to express ourselves and to gain confidence in ourselves.



REBECCA FREEMAN, *President*

DOT BICKFORD, *Vice-President*

MILDRED PAYNE, *Secretary*

MARY SUE HARPER, *Treasurer*

MARGIE FUSSEL

ELIZABETH JAMES

ELIZABETH LINCH

CAROLYN MURPHY

MARY JO RAINEY (Not pictured)

Debate Club

In the Debate Club, the student's mind is quickened by the practice of the clear thinking that is required for participation in activities of the group and the development of his personality and self-assurance is furthered.

JEAN MCKAMY, *President*

ANICE KILPATRICK, *Vice-President*

JACK RAGSDALE, *Secretary*

ELIZABETH LINCH, *Corresponding Secretary*

VERA FREEMAN, *Publicity Chairman*

JANE PALMER, *Program Chairman*



STEARMAN

PAYNE

O'CALLAGHAN

HARPER

O'CALLAGHAN

RICHARDSON

GATEWAY OF 1943



ANNIE PERRY NOWELL

STAFF

ANNIE PERRY NOWELL.....*Editor*
 JEAN MCKAMY*Associate Editor*
 SUE ROBINSON*Business Manager*
 KATHARINE O'CALLAGHAN *Asst. Bus. Mgr.*
 ELSA O'CALLAGHAN*Picture Editor*

The aim and purpose of the annual of the Georgia Junior College, The Gateway, is to preserve for the student memories of his school activities at the Junior College. Every member of the faculty, student body, and every school organization is represented in this publication. The staff that edits the Gateway is composed of a representative group of the student body.

EMILLY MCNELLEY.....*Literary Editor*
 JEANNETTE JORDEN.....*Asst. Lit. Editor*
 JACK RAGSDALE*Staff Photographer*
 MAJOR WM. P. LAYTON...*Faculty Advisor*



MCKAMY



ROBINSON



K. O'CALLAGHAN



E. O'CALLAGHAN



MCNELLEY



JORDEN



RAGSDALE



LAYTON

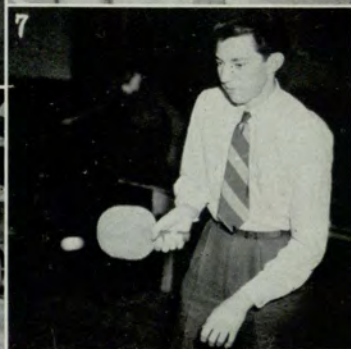
Athletics 1942 - 1943



1. Jack Ragsdale—Boys' Bowling champ and Boys' Physical Director.
2. Major Layton, Director of Athletics, presents the trophy to the winning

girls' rifle team.

3. Marjorie Blair, winner of girls' bowling tournament and Girls' Physical Director, throws one down the alley.



1. Winning boys' bowling team—Ragsdale, Stearman, Lord, and Poole.
2. Carolyn Murphy, Marjorie Blair, Jeannette Jordan, and Myrtle Vincent demonstrate their shooting ability.
3. Girls' basketball team of the Junior College.
4. Girls' champion bowling team—Blair,

Linch, Everett, Brown, Ayers, and McKamy.

5. Off to the races!—In the boys' gym class.
6. Walter Stearman teaches the art of riflery to David Nelson.
7. Charlie Righini—winner of the boys' ping-pong singles.



1. "Cutie" and "Crutch" give a little moral support to Billie Coogler.
 2. Bird's eye view of the Chi Rho Sigma formal.
 3. Sara and Lourene enjoy lunch time at the lodge party.

4. Betty Whitmire takes time out at the lodge to play with the cat.
 5. Chi Rho Sigma officers and their dates at the spring rush week dance.
 6. "Tex" and Molly get in a little "jive" at the lodge party.



Glee Club

The Junior College Glee Club was organized in 1935 for the benefit of those students who appreciate and love beautiful music. Once a week the members, under the direction of Mr. John D. Hoffman, enjoy an hour of singing the songs they love.

- ANICE KILPATRICK, *President*
- ELSA O'CALLAGHAN, *Vice-President*
- JEAN MCKAMY, *Secretary*
- JANE PALMER, *Librarian*
- HESTER CAFFEY
- MARGIE FUSELL
- MURIEL VAN NOSTRAND
- MARTHA YOUNG



Tythenian Society Presents Gay '90's Review



1. *Victim*—Harold Johnson, Mad Maniac Bill Waddy.
2. Larkin "Kruper" beats it out while chorus "girls" Johnson, Waddy, and Poole turn on the personality.
3. "The Andrews Sisters Cousins"—David Nelson and Jimmy Shackelford.
4. "Daisy Bell" Waddy being taken for a ride by "City Slicker" Crawley.
5. Brother Stearman lecturing about "Women" with the aid of Joe Miller Joke Book No. 23.
6. Propaganda!
7. Could this be "Rancid Rupert"?



1. Gossip and stuff.

2. New members "basking" in the sun.

3. Not "Tea for Two", tea for rushees.

4. More court yard chatter.

5. Kinman and Jones talking over the "manpower" situation.

6. "Dancer and Prancer" flying through the air.

7. Food and more food at the rush luncheon.

School Christmas Party



1. "Bread-line" in the Refectory. Note happy smiles.

2. Santa delivering presents to the janitors.

3. Mr. Hoffman leads the carols while Morgan Blake, Dr. Sparks and Rev. Cliett harmonize

4. Guest speaker Morgan Blake "makes a point."

5. Bill, Al, Walter, Shack, and Carol look over

the "Junior Collegiate" before the buffet supper.

6. Other end of the "bread-line." Food!!

7. Junior College girls get together for supper.

8. Sue and "Shack" work up an appetite before the party starts—to "Chris's" recorded swing.

9. "'Twas the night before Christmas"—

History of the Junior College

Although the University System of Georgia Junior College is quite young—to be exact, eight years old—up until the time of the present war, it was recognized as one of the fastest growing schools in the system. The year of its birth, 1935, there were approximately thirty-two students—in 1941 four hundred and fifty were enrolled.

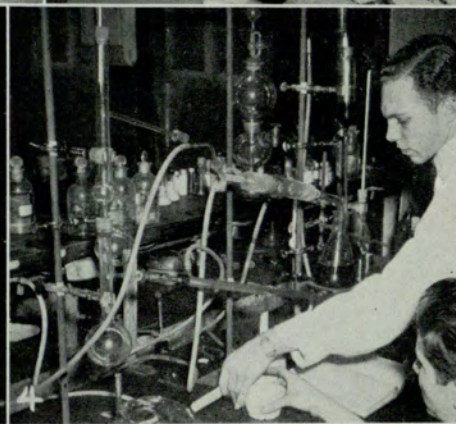
Dr. George M. Sparks has been the director of the Junior College since its beginning. Some of the faculty members who were engaged in 1935 are: Doctors Carl Mauleshagen, Elmer G. Cambell, James E. Routh, Merle Walker, and Joseph N. LeConte. Dr. R. R. Hollingsworth was added to the staff two years later. At the present there are some twenty-two full time teachers on the faculty of the Junior College.

1943 Graduation Day Schedule, May 26

DR. CARL MAULESHAGEN.....*Invocation*
DR. GEORGE M. SPARKS.....*Presentation of Diplomas*
DR. RABUN L. BRANTLEY.....*Literary Address*

Mr. John D. Hoffman will have charge of the music, and the academic processional will be played by Mrs. Charles Blanchard. The ushers for graduation will be the freshmen members of Sigma Pi Alpha.

Following the graduation exercises, a reception for the families and students will be held in the court.

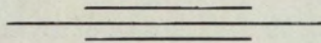


1. Members of the Junior Collegiate staff look over a new issue.
2. Robert, the janitor, gets the building ready for a cold winter.
3. Mr. Bell takes over in the office.

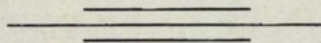
4. Chemistry lab—home of the "Skunk Juice."
5. Mrs. Bryant conducts a humanities class.
6. Home Economics students in the sewing room.

BOARD OF REGENTS
UNIVERSITY SYSTEM CENTER

Has enlarged Atlanta's educational facilities
for Atlanta Graduates



You may enter the Junior College for day classes
or the
Evening College for classes after business hours



UNIVERSITY SYSTEM OF GEORGIA

162 LUCKIE STREET, N. W.

ATLANTA

GEORGIA

BOOKSTORE

ATLANTA JUNIOR COLLEGE

Text Books
Stickers

College Outlines
Supplies

Place your orders here for "Best Sellers" or any other book in print.

For Your
Pleasure and Convenience
We Sell

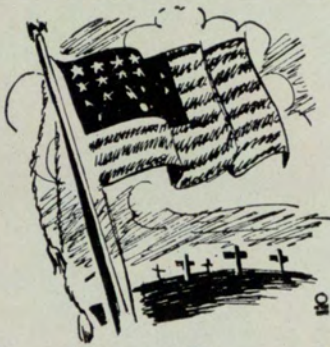
ARISTOCRAT MILK
JONES' PURE FRUIT JUICE
CRISWELL'S PIES AND CAKES
CANADA DRY GINGER ALE

ICE COLD COCA-COLA
DR. PEPPER - "7" UP
KRISPY KREME DOUGHNUTS
HILL'S SANWICHES
OLD'S ICE CREAM
HIRSCH'S CANDY

... HOT FOODS ...
"NESTLE'S" HOT CHOCOLATE
"BAILEY'S" SUPREME COFFEE

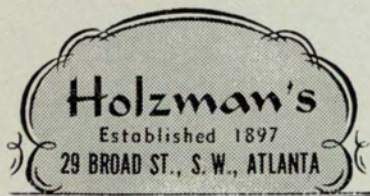
We recommend these products to our students

"THE REFECTORY"



The Star Spangled Banner

*Long may it wave
O'er the land of the free
And the home of the brave*



ARISTOCRAT

DAIRY PRODUCTS COMPANY

MAIN 3453

165 HAYNES ST.

MRS. HILL'S SANDWICHES

FRESH, DELICIOUS, SATISFYING

Sold in

THE REFECTORY....

STUDENTS - - - -

Patronize

McDANIEL'S

"Your Neighbor Across the Street"

Seat Covers—Lubrication—Washing—
Parking—Standard Oil Products

HARPER'S

Colonial
Flower
Shop

1094 PEACHTREE ST., N. E.

HEMLOCK 1181

SINCE 1885

COAL - FURNACES - STOKERS

LUMBER - MILLWORK

RANDALL BROS., INC.

35 MARIETTA STREET, N. W.

ATLANTA, GEORGIA



1. Tythenian luncheon. Lucky McKamy!
 2. Mary Sue Harper and Dr. Sparks at the Pearl Harbor day memorial service for William H. Manley.
 3. "Look this way, please." Taking pictures at the lodge.

4. The Tythenians present "The Operation."
 5. "Oh, if I had the wings of an angel."
 6. "Swing it babe!"
 7. "May I break?" The boys' dancing class.

J. P. STEVENS
Engraving Company

Established 1874

Wedding, Reception, Visiting
Cards

Monogrammed Stationery

*Artistic Creations With Fine
Material*

110 Peachtree St. — ATLANTA

**ROBERT FULTON
HOTEL**



WELCOME, STUDENTS
AND PARENTS

SAM T. DUKE JNO. F. CLEGG
Mgr. Mgr.-Dr.

RIDE OUR BUSES
MONDAY THRU THURSDAY
AND SAVE
THE WEEKENDS
FOR
OUR BOYS IN THE SERVICE

—there is a motor bus ready to take
you there . . . with comfort
and economy

For Information Call WALNUT 6300

GREYHOUND
BUS DEPOT of Atlanta

Sportsman's Headquarters
in Atlanta

Bicycles and Supplies — Sporting Goods
Athletic Goods — Fishing Tackle
and Toys

WHOLESALE and RETAIL

WALTHOUR & HOOD CO.
Pryor St. at Auburn Ave. Ma. 7137

ANSLEY HOTEL

Just around the corner from the Georgia Junior College. Ideally located for Fraternity, Sorority and other organizations' banquets, dinners, etc.

L. L. TUCKER, JR.,
MANAGER

B O W L . . .

The Right Way
at

BLICK'S

4 CONVENIENT CENTERS

BOWLING PALACE
Briarcliff Plaza

LUCKY STRIKE
671 Peachtree Street

KING PIN
840 Gordon Street

***BOWLING CENTER**
Top Floor Belle Isle Garage
(*Largest One-floor Alley in the World)

100 - SANCTIONED ALLEYS - 100

Now the favorite sport of Atlantans
. . . bowl regularly for competition,
fun and health.

In Business Since 1884

Building Material . . . Lumber . . .
Millwork . . . Electrical Fixtures . . .
Hardware . . . Paint . . . Ready-
Mixed Concrete . . . Furnaces and
Heating Equipment

CAMPBELL COAL CO.

For Action Call Jackson 5000



1. Mr. McClellan, former registrar, and Dr. Sparks.
 2. Art, where art thou?
 3. Chris, king of recorded swing, and company.

4. Chi Rho Sigma officers at the Christmas formal.
 5. "Typical" scene at the Junior College (Posed).
 6. Becky, Walter, and Sara cast their votes at the fall election.

BUS. PHONE 3595

FRED C. BLAIR

Florist

"INDIVIDUALITY IN FLOWERS"

1580 PIEDMONT ROAD, NORTH EAST

ATLANTA, GEORGIA

*Compliments
of*

Davis Brothers
Restaurant

LUCY WOOD
CAFETERIA

*Now Open in
New Location*

62 MARIETTA STREET

(OLD BECK & GREGG BLDG.
OPP. GEORGIA POWER CO.)

DR. J. C. DUGGAN

OPTOMETRIST AND OPTICIAN

211 MITCHELL STREET, S. W.

PHONE: WA. 9985

ATLANTA, GA.

50

YEARS OF SERVICE TO ATLANTA

THIS was a small town when Gold Shield first began handling the laundry and the dry cleaning of Atlanta folks. We must have done a good job — and kept on doing it — because, like Atlanta, we have grown pretty big. Nine modern and well-equipped plants are ready to serve you. Call the nearest of them for full details for service that is better, but costs no more.

AMERICAN LAUNDRY
CAPITAL CITY LAUNDRY
DECATUR LAUNDRY
EXCELSIOR LAUNDRY
GUTHMAN LAUNDRY
MAY'S LAUNDRY
PIEDMONT LAUNDRY
TRIO LAUNDRY
TROY LAUNDRY

MA in 1016
VErnon 4711
DEarborn 1606
WAInut 2454
WAInut 8661
HEmlock 5300
WAInut 7651
VErnon 4721
HEmlock 2766

... Ask Your
Route Salesman

Gold Shield Laundries



AIR CONDITIONED

In a Hurry? On a Budget? Real Hungry
Fast Service Reasonable Price Delicious Foods

WOODINGS CAFETERIA

39 Marietta St.

Breakfast	Lunch	Supper
6:30 to 9:15	11:00 to 2:15	5:00 to 7:45



THOMPSON-BOLAND-LEE

Long have we been friends of the members of the Georgia Junior College — always our best wishes for their future.

Our Service Is Not Rationed

We Have Plenty of Shoes

Compliments of



A Red Truck on Every Package
LOOK FOR IT

"Meet Your Friends"

at

STANDARD DRUG CO.

"Up the street from the college"

YOU ARE ALWAYS WELCOME

GENERAL SPECIALTY COMPANY

Manufacturers and Distributors

Banners, Pennants, Flags, Felt Novelties, Plain and Fancy Embroidery Chenille and Felt Letters and Emblems, Celluloid Buttons and Badges, Gold and Silver Embossing, Art Work, Designers, Posters.

Costumes for Rent or Sale

72 Broad St., N. W. Walnut 5127
ATLANTA, GEORGIA

MARCUS

Is Where the Most Stylish, Most Durable Men's Wear Is Bopfiht Most Advantageously

62 PEACHTREE THRN TO BROAD

That Extra Something!

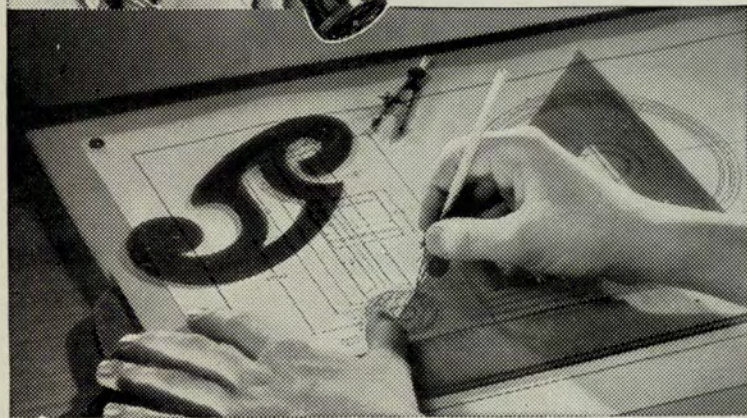
...You can
spot it every time

COCA-COLA has that extra something that rates with youth. That's why Coca-Cola—a long-established product—belongs to the younger set year after year. Choicest, special ingredients and special care in its making, give Coca-Cola a special refreshing taste and quality.

This unique taste comes from a finished art in its making... a blend of flavor-essences merging the ingredients of Coca-Cola into a taste all its own. It leaves an after-sense of refreshment that everybody recognizes.

* * *

It's natural for popular names to acquire friendly abbreviations. That's why you hear Coca-Cola called Coke. Coca-Cola and Coke mean the same thing... the real thing... "coming from a single source, and well known to the community".



YOU TASTE ITS QUALITY

*"Oh, Darling,
It's Lovely!"*



Bridal pair — platinum, complete \$210.00.



Beautiful but modestly priced, yellow or white gold, complete \$125.00



Platinum — 11-diamond engagement ring, plain band, \$175.00.



In yellow gold only, diamond solitaire and five-diamond wedding band, complete \$75.00.



MYRON € FREEMAN & BRO.

103 PEACHTREE STREET
"WATCH AND DIAMOND MERCHANTS"

WALTER R. THOMAS, President

ATLANTA

ROME

*In peace and in war
Freeman diamonds are the traditional symbol of love.*



*With firm faith in the future—
Unshaken, staunch and true;
They pledge their troth together,
For love and country, too.*

*His hand will be the stronger for her confiding touch;
her heart will be the lighter for love that means so much.*

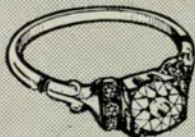
Federal Tax Included



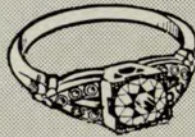
Yellow gold, diamond studded bridal ensemble \$25.00.



Platinum set with 16 Freeman quality diamonds \$300.00.



Exclusive Freeman creation, platinum \$500.00.



See this ring in our windows, in yellow or white gold, \$175.00.



This pair a triumph of our designers, platinum \$450.00.

"The Largest Diamond House South"



Every Freeman diamond, regardless of price, is individually selected by our diamond buyers who are nationally known authorities. Buy your diamond from a store who for over 50 years has maintained the highest standards of merchandising. Convenient terms can be easily arranged.

.....

Compliments

of

RIALTO
Theatre
ATLANTA, GA.

.....



The Best Dressed Men Wear . . .



ALBANY

ATHENS

ATLANTA

COLUMBUS

LaGRANGE

MACON

SAVANNAH



Engravings for the
1943 Gateway

By

WRIGLEY CO.
ATLANTA

AUTOGRAPHS

