

The 1944

Kenneth England

GATEWAY



Published by

THE STUDENT BODY

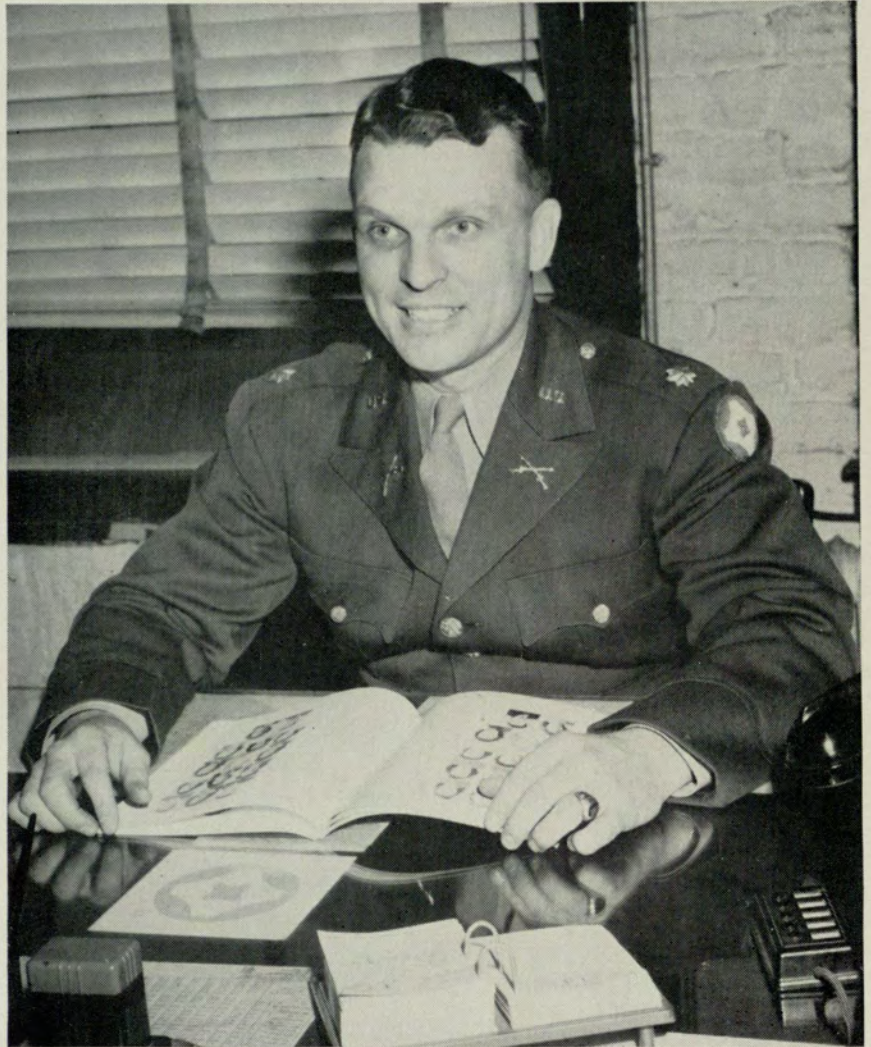
of

THE ATLANTA JUNIOR COLLEGE

JEAN McKAMY
ELSA O'CALLAGHAN
Co-Editors

MARY ANN LINANE
Business Manager

DEDICATION



MAJOR W. P. LAYTON

To Major Layton, the guiding hand in all student publications, we, the staff of 1944, dedicate this war issue of the GATEWAY. You're a man of "ways and means," and without you the publications could not exist.

May the thought always go with you that you have been a vital influence in the molding of the lives of many Junior College students.

FOREWORD

We give you the 1944 war issue of the GATEWAY. As you glance through its pages and notice the things that are missing, remember that many of our would-be and former students are engaged in some form of program for victory; also, many materials are not available during this emergency period.

However, the high spirit, enthusiasm, and good fellowship remain among the student body and faculty, and the staff's aim is to perpetuate happy school days in anticipation of a better world to come.

Faculty



GEORGE M. SPARKS
A.B., M.A., LL.D.
Director
Mercer University; Graduate
summer work, Oxford, England



ELMER G. CAMPBELL
A.B., M.S., Ph.D.
Dean
Hiram College of Ohio; Purdue
University; University of Chicago



NELL HAMILTON TROTTER
A.B., M.A.
University of Arkansas;
University of Wisconsin
Dean of Women



ROBERT L. BELL
A.B.
Emory University Graduate
School;
Emory University Medical School



NAN BRYAN
A.B., M.A.
University of Illinois



R. A. CHRISTOPHER
B.S.C.
University of Georgia



JENNIE S. HOLLINGSWORTH
B.S.M.A.
Kansas State College; Teachers'
College, Columbia University;
University of Wisconsin;
University of California;
University of Chicago



R. R. HOLLINGSWORTH
B.A., M.A., Ph.D.
University of Washington;
Teachers' College of Columbia
University; University of North
Carolina Graduate Work; Univer-
sity of Chicago, and University of
Southern California

Faculty



HAL HULSEY
A.B., M.A.
University of Georgia; Graduate
Work, University of Georgia;
Emory University



PICKETT HYNES
B.C.S.
Emory University; University of
Georgia; Georgia Evening College



V. V. LAVROFF
Junior College, Harbin, China;
B.S.C., M.A., Georgia School of
Technology; Emory University



MJR. WILLIAM P. LAYTON
B.Ph.
Emory University



CARL MAUELSHAGEN
A.B., M.A., Ph.D.
University of Tennessee; Univer-
sity of Chicago; University of
Minnesota



JAMES E. ROUTH
A.B., Ph.D.
Johns Hopkins University



LINNIE TALLANT
R.N.



MERLE WALKER
A.B., M.A., Ph.D.
Hollins Institute; Radcliffe
College; Harvard University

School Officers



EVERETT

SPINKS

JORDAN

BETTY GRACE SPINKS *President*

CADET SUE CUTTS *Vice-President*

JEANETTE JORDAN *Secretary*

RUTH EVERETT *Treasurer*

Sophomore Officers



CHEVES

CAFFEY

ELROD

LE FEVRE

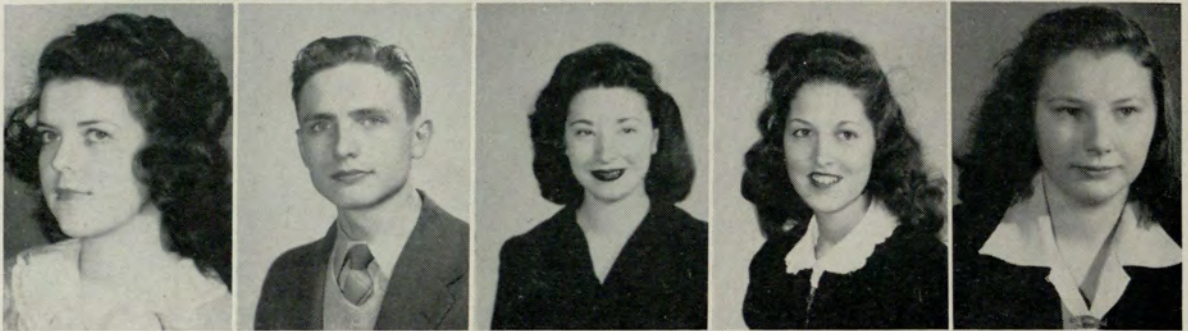
JEAN LE FEVRE *President*

HESTER CAFFEY *Vice-President*

CHARLOTTE ELROD *Secretary*

JANE CHEVES *Treasurer*

SOPHOMORES



BILL BARGREN—Pi Sigma Alpha '43-'44, Vice-President; Junior Collegiate '42-'43; Signal '43-'44; Dramatic Club '42-'44, Secretary; Debate Club '43-'44, Secretary; Inter-Fraternity Council '42-'43; Superlatives '43-'44, Mr. Junior College, Most Handsome, Most Versatile, Most Likely to Succeed.

HOPE BAYNES—Delta Alpha Delta '43-'44; Dramatic Club '43-'44; Debate Club '43-'44.

DOT BICKFORD—Delta Alpha Delta '42-'44, Sgt.-at-Arms '43-'44; Glee Club '42-'44; Home Economics Club '42-'43, Vice-President; Student Council '42-'43.

RUTH BILES—Chi Rho Sigma '43-'44.

HESTER CAFFEY—Delta Alpha Delta '42-'43, Secretary '43-'44; Dramatic Club '42-'43; Glee Club '42-'44; University Signal '43-'44; May Court '42-'43; Vice-President Sophomore Class.

RALPH CHAPMAN—Pi Sigma Alpha '43-'44.

JANE CHEVES—Delta Alpha Delta '42-'44, Pledge Captain; Debate Club '42-'43; Glee Club '43-'44; Treasurer Sophomore Class.

ELEANOR COX—Delta Alpha Delta '43-'44; Dramatic Club '42-'44; Inter-Fraternity Council '42-'43.

SARAH CRANE—Delta Alpha Delta '43-'44; University Signal '43-'44; Junior Collegiate '42-'43; Flambo '43-'44.

SOPHOMORES



CHARLOTTE ELROD—Delta Alpha Delta '42-'43, Treasurer '43-'44; Sigma Pi Alpha '42-'43; Baptist Student Union '42-'43; Secretary Sophomore Class '43-'44; Wit-tiest '43-'44.

RUTH EVERETT—Treasurer of school, May Court '43-'44; Student Council '43-'44.

MARGIE FUSSELL—Delta Alpha Delta '42-'43, Vice-Pres. '43-'44. Home Economics Club '42-'44; Glee Club '42-'43, President '43-'44; Interfraternity Council '42-'43, Secretary '43-'44; Student Council '43-'44; May Court '44.

JUDY FLYNT—Sigma Pi Alpha '43-'44.

DOROTHY GAMBRELL—Delta Alpha Delta '42-'44, Chaplain; Sigma Pi Alpha Key Member; Debate Club '42-'44; B. S. U. '42-'43; May Court '44.

MARILYN GINN—Delta Alpha Delta '43-'44; Home Economics Club '43-'44.

BETTY GRAHAM—Chi Rho Sigma '43-'44, Social Chairman; University Signal '43-'44; Dramatic Club '43-'44; Maid of Honor, May Court '44.

MELBA HART—B. S. U. '42-'43; Christian Student Union '43-'44; Debate Club '42-'43; Student Council '43-'44.

ROTELLE HIGHTOWER—Chi Rho Sigma '43-'44.

BETTY IRVINE—Chi Rho Sigma '42-'43, President '43-'44; Inter-fraternity Council '43-'44; Student Council '43-'44; Dramatic Club '42-'44; Junior Collegiate '42-'43; University Signal '43-'44; Gateway Staff '43-'44; May Queen '44.

SOPHOMORES



MARY LOUISE JONES

SARA LANCE—Delta Alpha Delta '42-'44; B. S. U. '42-'43; Christian Student Union '43-'44.

JEAN LE FEVRE—Delta Alpha Delta '43-'44; Home Economics Club President '43-'44; Student Council '43-'44; President Sophomore Class; Most Attractive '43-'44.

MARY ANN LINANE—Chi Rho Sigma '41-'42, President '42-'43; Inter-Fraternity Council '41-'43; Dramatic Club '42-'43; Miss Jr. College '42-'43; Maid of Honor, May Court '43; Business Manager Gateway '43-'44.

JEAN McKAMY—Delta Alpha Delta '41-'42; Treasurer '42-'43; Sgt.-at-Arms '43-'44; Debate Club '41-'43, President '43-'44; Glee Club '41-'44; Secretary-Treasurer '42-'43; B. S. U. '41-'43, Vice-President; Dramatic Club '42-'44; Gateway Staff

'42-'43; Co-Editor Gateway '43-'44; May Court '43; Student Council '42-'44; Inter-Fraternity Council '42-'43; Most Versatile '43-'44.

EMILY McNELLEY—Chi Rho Sigma '42-'44 Scribe; Junior Collegiate Ass't Editor '42-'43; Dramatic Club '42-'44; Gateway Staff '42-'44; University Signal '43-'44; Treasurer Freshman Class '42-'43.

ESTHER MICKLEY—Sigma Pi Alpha Key Member; Honorary Member Delta Alpha Delta.

CAROLYN MURPHY—Sigma Pi Alpha '43-'44; Glee Club '43-'44; B. S. U. '42-'43; Christian Student Union '43-'44; Home Economics Club '42-'43; Secretary-Treasurer '43-'44.

MARY ELIZABETH NEELY—Delta Alpha Delta '43-'44.

SOPHOMORES



ELSA O'CALLAGHAN—Chi Rho Sigma '42-'43, Secretary-Treasurer '43-'44; Dramatic Club President '42-'44; Glee Club Vice-President '42-'43, Secretary-Treasurer '43-'44; Inter-Fraternity Council Vice-President '42-'44; Debate Club '42-'44; Gateway Staff Picture Editor '42-'43, Co-Editor '43-'44.

MARY NEAL OWEN—Delta Alpha Delta '43-'44; Christian Student Union '43-'44; Student Council '43-'44; Chairman of Bulletin Board.

MILDRED PARKER—Sigma Pi Alpha '43-'44.

EVELYN ROBERTSON—Student Council '43-'44; Chi Rho Sigma '43-'44.

JAMES SMITH—Phi Sigma Alpha '43-'44; Dramatic Club '43-'44.

BETTY GRACE SPINKS—Delta Alpha Delta '42-'43, President '43-'44; President Student Body; B. S. U. '42-'43; Christian

Student Union '43-'44, Vice President; Dramatic Club '42-'44; Debate Club '43-'44; Inter-Fraternity Council '43-'44; Student Council '43-'44; May Court '42-'44; Superlatives '43-'44, Miss Junior College and Most Likely to Succeed.

ASHFORD WATSON STALNAKER—Inter-Fraternity Council '43-'44, President; Phi Sigma Alpha '43-'44, Treasurer; Flambo Staff '43-'44, Business Manager; Dramatic Club '43-'44; Superlative, Most Dependable.

LOURENE TATE—Vice-President Freshman Class '42-'43; Junior Collegiate Staff '42-'43; Dramatic Club '42-'44; Chi Rho Sigma '42-'44, Vice-President; Student Council '42-'43; Inter-Fraternity Council '42-'43, Treasurer.

MURIEL VAN NOSTRAND—Delta Alpha Delta '43-'44; Flambo '42-'43, '43-'44 Editor; Signal Staff '42-'44; Glee Club '42-'44; Dramatic Club '42-'44.

Freshman Officers



ALTMAN

NASH

BLAIR

WOODMAN

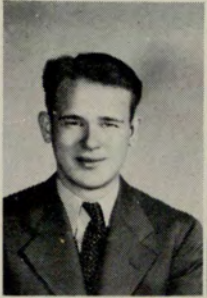
MARGARET ALTMAN *President*

KAY WOODMAN *Vice-President*

GLORIA NASH *Secretary*

ELIZABETH BLAIR *Treasurer*

. . . FRESHMEN



BOB ALDEN

MARGARET ALTMAN



ZANE AYRES

EVELYN BAILEY

PAUL BAKER



DOROTHY BELL

ELIZABETH BLAIR

MARIE BROWN



MARY CAHILL

EDITH CHEEK

BARBARA ANN COLLIER



DAVID COOK

LE VERNE COOPER

OWEN COOPER

. . . FRESHMEN



ROBERTA COWARD

HELEN COX



VIRGINIA COX

WILLA CRAWFORD

SARA CRANE



CAROL CULPEPPER

NANCY DOBBINS

LAURA EASTERLING



EDNA EVERETT

WILLEM ETHREDGE

ANNE FOSTER



MARY GARNER

ELEANOR GOLDEN

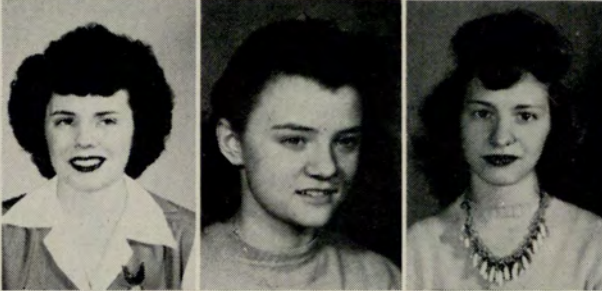
MADGE GREEN

. . . F R E S H M E N



MARTHA GRIGGS

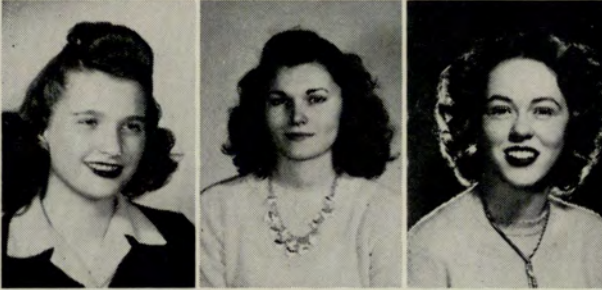
IRMA HATHCOCK



JANE HOLBROOK

ELIZABETH HAYNE

MARY ANNA JACKSON



WILHELMINA JOHNSON

JANE JONES

MARY FRANCES JONES



COLEY KELLAM

ALICE LANHAM

ROGER LORRAINE



JEAN LUTTRELL

JIMMIE MAGILL

EVELYN MASON

. . . F R E S H M E N



ELAINE MAYER



BEA McCORMICK



SUSAN McCOY



FRANCES McWHIRTER



GLADYS MEEKS



ALICE MILLER



MARTHA MORGAN



BARBARA NOBLEN



SARAH OLDHAM



CHARLOTTE OSLIN



CAROLYN PADGETT



PATTI POWELL



QUINELLE PETRY

. . . FRESHMEN



ELLA PEPPARD

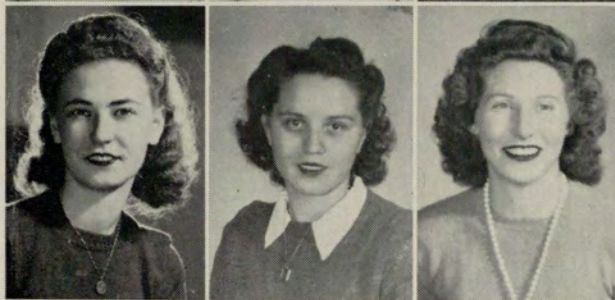
JUNE ANN RADER



NORMA JANE RADER

JANET ROGERS

ELLEN RUSSELL



DORIS SHEEL

NELLIE SHELNUTT

BURMA SHINALL



SHIRLEY SHULMAN

BARBARA SIKES

FRANCES SPEARS

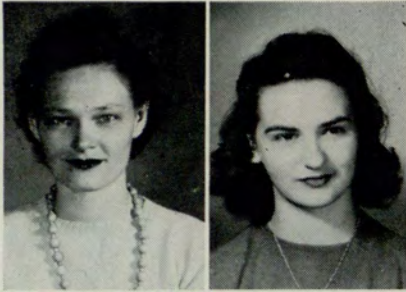


EDNA STAFFORD

MARGARET STRINGER

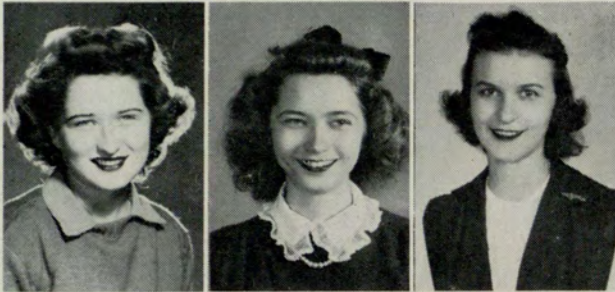
BONNIE TANNER

. . . FRESHMEN



ALICE TERRELL

SUE TIDWELL



FRANCES TURNER

JUNE VAN SICKLE

JANE WAITE



GLADYS WALSH

BETTY WARD

MARIE WELCH



JEAN WELLS

ELLINOR WHITEFORD

CATHERINE WILLIAMSON

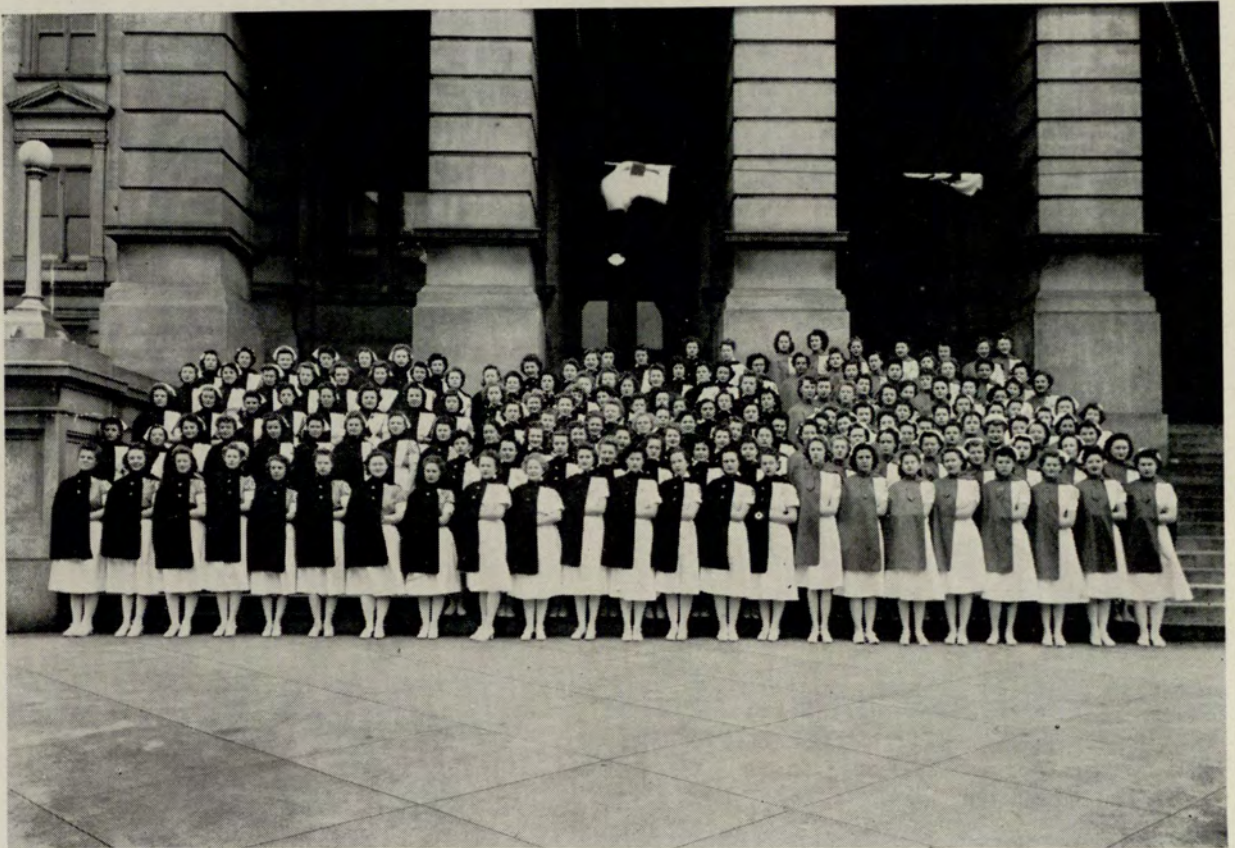


ISABELLE WILLIAMSON

KAY WOODMAN

MARTHA WYCHE

Cadet Nurse Corps



C A D E T N U R S E C O R P S

With the opening of the 1943 Fall term, approximately 150 pre-cadet nurses began their academic program in the Junior College. At the opening of each succeeding term, sixty or seventy more joined the first group for courses here in Chemistry, Micro-biology, Physiology, Anatomy, Sociology, Psychology.

The nursing program, of which they are a part, is centralized at the University at Athens. The three participating hospitals in the program in Atlanta are Crawford Long, Piedmont, and Georgia Baptist.

The program in cooperation with the Junior College is known as the Collegiate Program for the Atlanta Schools of Nursing.

ORGANIZATIONS



Through these organizations the social and scholastic aspects of the school are bound together.

Student Council

This governing body is organized to express the will of the majority of the student body in the guidance of student activities, to strive toward an even closer understanding between the faculty and students, and to work toward the betterment and growth of the Junior College and its students.

BETTY GRACE SPINKS, *President*

SUE CUTTS, *Vice-President* (not pictured)

JEANETTE JORDAN, *Secretary*

RUTH EVERETT, *Treasurer*



First Row: Margaret Altman, Hester Caffey, Owen Cooper, Eleanor Cox, Margie Fussell. *Second Row:* Melba Hart, Mary Anna Jackson, Jean Le Fevre, Jean McKamy, Frances McWhirter. *Third Row:* Norma Jane Rader, Evelyn Robertson, Sue Tidwell, Ellinor Whiteford, Kay Woodman.

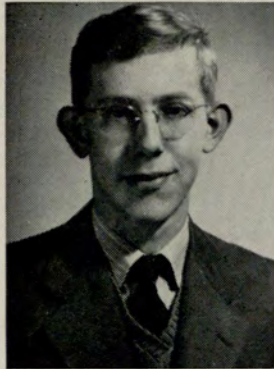
INTER-FRATERNITY *Council*

The purpose of the Inter-Fraternity Council is to promote fellowship and cooperation between the various fraternal organizations of the Atlanta Junior College.

ASHFORD STALNAKER
President

ELSA O'CALLAGHAN
Vice-President

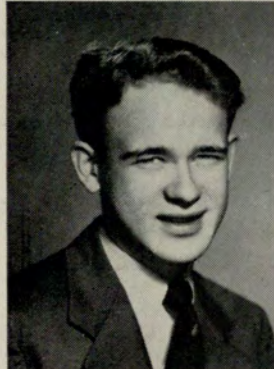
MARGIE FUSSELL
Secretary-Treasurer



BOB ALDEN

DAVID COOK

MARY ANNA JACKSON



BETTY IRVINE

BETTY GRACE SPINKS

ELLINOR WHITEFORD



SIGMA PI ALPHA

The Sigma Pi Alpha is composed of the members of the student body who have a scholastic average of B plus for the current quarter and for a grand average. Keys are awarded to those members who are elected to Sigma Pi Alpha for four consecutive quarters, and who have been active in school affairs.

First Row: Dot Gambrell, Key Member; Jeanette Jordan, Key Member; Esther Mickley, Key Member; Marjorie Blair (not pictured), Key Member.

Second Row: Margaret Altman, Dorothy Bell, Elizabeth Blair.

Third Row: Helen Cox, Charlotte Elrod, Irma Hathcock.

Fourth Row: Coley Kellam, Jean Luttrell, Le Verne Cooper.

Fifth Row: Charlotte Oslin, Mildred Parker, Barbara Sikes.

Sixth Row: Sue Tidwell, June Van Sickle, Kay Woodman, Judy Flynt (not pictured).



CHI RHO SIGMA



Daily session in Refectory



"Among those attending" the Valentine party



Entertaining V-12s at Wiley Moore's



"Ruky" and "Tuky" do one of their specialties



Three dopes sharing a "dope"



"Flabby" Tidwell, "Fertilizer" Whiteford and "Gabby" Jones before the microphone at the Chi Rho Sigma assembly

. . . CHI RHO SIGMA

"We, the members of Chi Rho Sigma, pledge ourselves to a noble and kind sisterhood. We again pledge ourselves to constantly strive to ever be helpful, active, and ready to aid one another and mankind."—The pledge and purpose of this organization, which also endeavors to attain higher ideals and promote achievement in the school life of Junior College students.



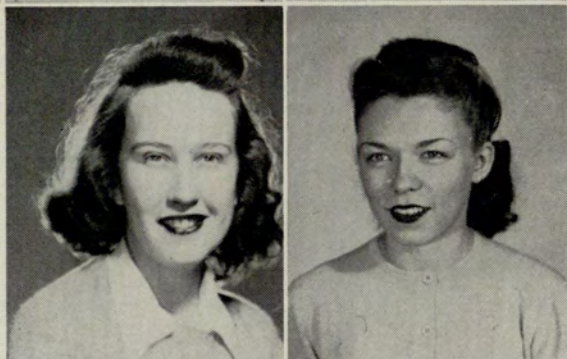
BETTY IRVINE, *President*

LOURENE TATE, *Vice-President*

ELSA O'CALLAGHAN, *Secretary-Treasurer*

EMILY McNELLEY, *Scribe*

BETTY GRAHAM, *Social Chairman*



Snapshots



Boo! Lourene, Betty, Isabelle and Betty Betty Irvine and Sara Richardson lead the "leadout" at the winter formal

Officers and their dates look over the dance from the balcony

Sue, Mr. Bryant, Isabelle and Dot at their favorite pastime

Spring again! Getting a bit of sun . . .

"Birds-eye view" of the winter formal

CHI RHO SIGMA

EVELYN BAILEY

DOROTHY BELL

RUTH BILES

BETTY CHAMBLEE

NANCY DOBBINS

ROTELE HIGHTOWER

JANE HOLBROOK

JANE JONES

MARY FRANCES JONES

BETTY JORDAN

COLEY KELLAM

EVELYN ROBERTSON

MAGGIE STRINGER

SUE TIDWELL

ELLINOR WHITEFORD

ISABELLE WILLIAMSON

JUNE BOUGHTON

REBECCA FREEMAN

PAT NOWELL

KATHARINE O'CALLAGHAN

BARBARA YARN

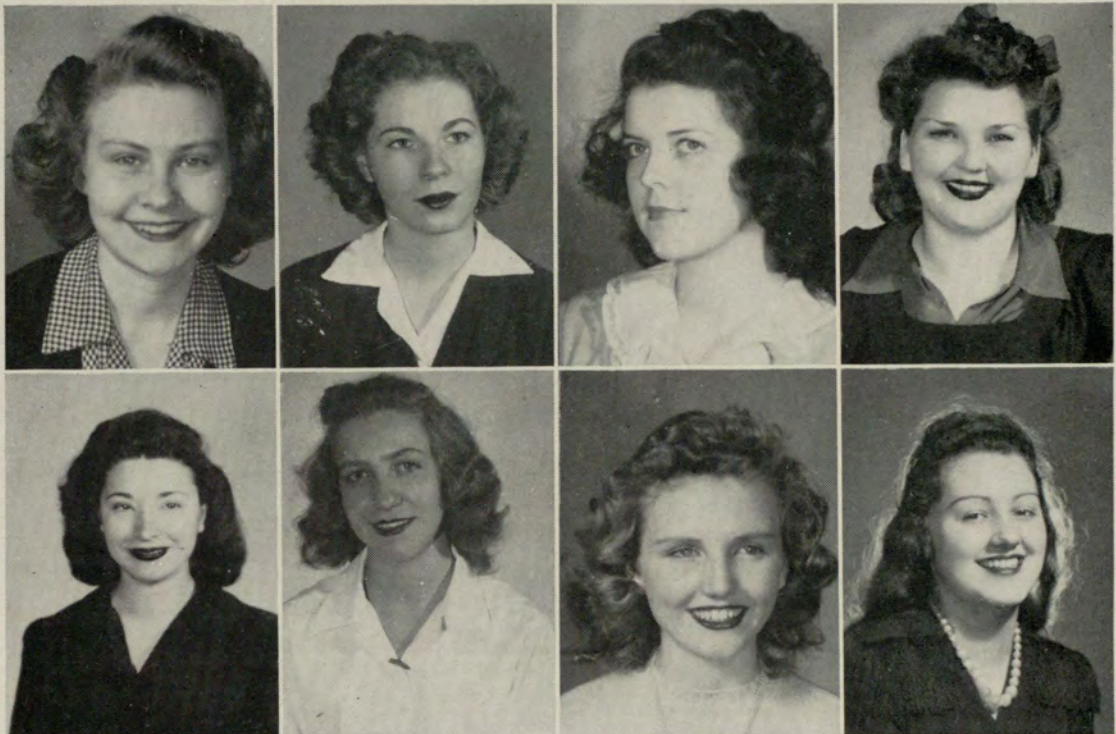
MARTHA YOUNG



Delta Alpha Delta

The Delta Alpha Delta Sorority was organized as a woman's fraternity to promote understanding, to enjoy the fellowship of one another, and to stand for the right, the decent, and the lawful.

Our purpose is to perfect, and in our daily lives carry out, the meaning of sisterhood. To try, ourselves, to reach the highest standards possible physically, mentally, and morally. To be forgetful of ourselves and mindful of others.



First Row: Betty Grace Spinks, President; Margie Fussell, Vice-President; Hester Caffey, Secretary; Charlotte Elrod, Treasurer.

Second Row: Jane Cheves, Pledge Captain; Jeanette Jordan, Scribe; Dorothy Gambrell, Chaplain; Dorothy Bickford, Sergeant-at-Arms.

DELTA ALPHA DELTA

MARGARET ALTMAN

ZANE AYRES

HOPE BAYNES



ELIZABETH BLAIR

BARBARA ANN COLLIER

ELEANOR COX



VIRGINIA COX

SARAH CRANE

CAROL CULPEPPER



ANN FOSTER

MARILYN GINN

IRMA HATHCOCK



JOYCE HOLSENBECK

MARY ANNA JACKSON

WILHELMINA JOHNSON



SARA LANCE

ANN LARGEN

JEAN LE FEVRE



DELTA ALPHA DELTA



JEAN LUTTRELL

BEA McCORMICK

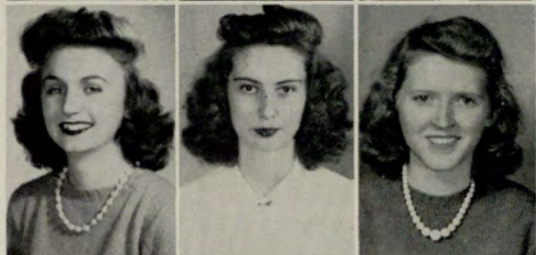
JEAN McKAMY



FRANCES McWHIRTER

MARTHA MORGAN

ESTHER MICKLEY



GLORIA NASH

MARY ELIZABETH NEELY

CHARLOTTE OSLIN



MARY NEAL OWEN

JUNE ANN RADER

NORMA JANE RADER



BARBARA SIKES

FRANCES TURNER

MURIEL VAN NOSTRAND



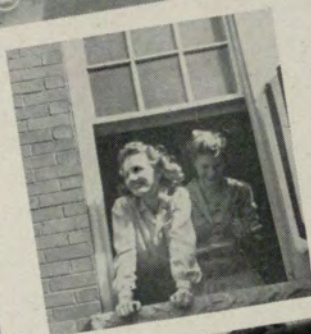
BETTE WARD

CATHERINE WILLIAMSON

KAY WOODMAN

Not pictured: Betty Atwood, Jean Smith

DELTA ALPHA DELTA



1. No "males," but plenty of mail

2. Picnicking

3. Betty and beau steppin' out to Thanksgiving football game

(Center) Gambrell and Fussell looking over or overlooking things!

4. Bathing beauties?

5. A "hot foot"?

6. Thanksgiving Day—"Thanks for men"

PHI SIGMA ALPHA

The purpose of Phi Sigma Alpha is:

To promote ideals of intellectual achievement.

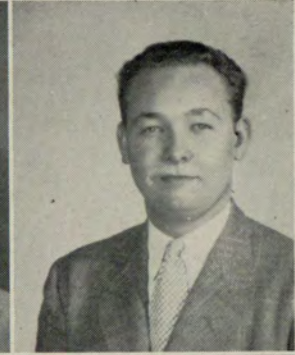
To establish a perpetual fellowship.

To elect into our brotherhood men of good character and outstanding leadership who will work with the interest of our institution at heart, and who will be to the advantage and advancement of our college.

DAVID COOK
President

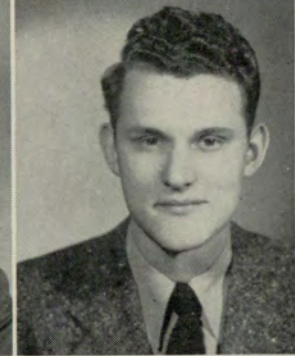
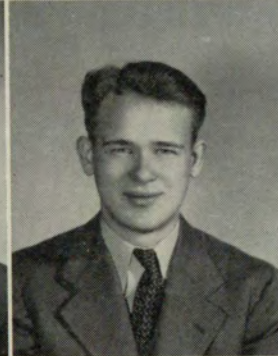


BILL BARGREN
Vice-President



PAUL BAKER
Secretary

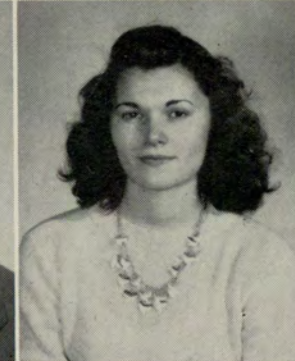
ASHFORD STALNAKER
Treasurer



BOB ALDEN

JAMES SMITH

BOB WHITEFORD



RALPH CHAPMAN

JANE JONES
Sponsor

The University Signal

The University Signal, college newspaper published monthly by Evening and Junior College students, contains the news, features, and pictures concerning both schools.



JEANETTE JORDAN *Editor*

HELEN COX, BARBARA SIKES..... *Assistant Editors*

MARGARET ALTMAN *Business Editor*

BETTY IRVINE *Feature Editor*

REPORTERS: Kay Woodman, Norma Jane Rader, Bill Bargren, Hester Caffey, Lourene Tate, Emily McNelley, Patti Powell, Bob Alden, Lucy Smith, Elizabeth Blair, Betty Graham, Susan Daugherty, Muriel Van Nostrand.

Christian Student Union

The Christian Student Union was organized to promote better Christian fellowship among the Junior College students of all denominations and among the organizations.

OWEN COOPER
President

BETTY GRACE SPINKS
Vice-President

LE VERNE COOPER
Secretary Treasurer



MARGARET ALTMAN

IRMA HATHCOCK

BEA McCORMICK



CAROLYN MURPHY

ANN FOSTER

KAY WOODMAN



Debate Club

In the Debate Club, the student's mind is quickened by the practice of the clear thinking that is required for participation in activities of the group and the development of his personality and self-assurance is furthered.



JEAN MCKAMY *President*



BILL BARGREN *Vice-President*



KAY WOODMAN *Secretary-Treasurer*



First Row:
MARGARET ALTMAN
HOPE BAYNES
HELEN COX

Second Row:
DOT GAMBRELL
ANN LARGEN
BEA McCORMICK

Third Row:
ELSA O'CALLAGHAN
BARBARA SIKES
Not pictured: COLEY KELLAM

Glee Club



MARGIE FUSSELL
President

CAROLYN MURPHY
Vice-President

ELSA O'CALLAGHAN
Secretary

HESTER CAFFEY

JANE CHEVES

NORMA RADER

JUNE RADER

JEAN MCKAMY

MURIEL VAN NOSTRAND

CATHERINE WILLIAMSON



Home Economics Club

The aim and purpose of the Home Economics Club is to foster and broaden the interests of Home Economics students. In this Club we enjoy the fellowship of co-workers, learn to express ourselves and to gain confidence.

MARGIE FUSSELL

MARILYN GINN

BEA McCORMICK

MARTHA MORGAN

CHARLOTTE OSLIN

JEAN LE FEVRE
President

DOROTHY BELL
Vice-President

CAROLYN MURPHY
Secretary-Treasurer



GATEWAY STAFF

OF 1944



MARY ANN LINANE
Business Manager



KAY WOODMAN
Assistant Editor



MARGARET ALTMAN
Picture Editor



Co-Editors: JEAN MCKAMY, ELSA O'CALLAGHAN

The aim and purpose of the Annual of the Georgia Junior College, THE GATEWAY, is to preserve for the student memories of his school activities. Every member of the faculty, student body, and every school organization is represented in this publication. The staff that edits THE GATEWAY is composed of a representative group of the student body.

LITERARY STAFF



EMILY McNELLY



NORMA JANE RADER



BETTY IRVINE

FINANCIAL STAFF



FACULTY ADVISOR

MAJOR W. P. LAYTON



JUNE ANN RADER



SUE TIDWELL



ELSA O'CALLAGHAN *President*
 ELLINOR WHITEFORD *Vice-President*
 BILL BARGREN *Secretary-Treasurer*

Dramatic Club

Students desiring the glow of footlights, hearty applause, laughs, and the satisfaction derived from self-expression on the theatrical stage, may find these diversified, wholesome experiences through the Dramatic Club of the Junior College.



MARGARET ALTMAN
 HOPE BAYNES
 HESTER CAFFEY
 BETTY CHAMBLEE
 ELEANOR COX
 MARGIE FUSSELL

BETTY IRVINE
 MARY FRANCES JONES
 BETTY JORDAN
 ROGER LORRAINE
 EMILY McNELLEY
 JIMMY SMITH

ASHFORD STALNAKER
 MAGGIE STRINGER
 LOURENE TATE
 SUE TIDWELL
 MURIEL VAN NOSTRAND
 KAY WOODMAN

Superlatives . . .

MR. & MISS JUNIOR COLLEGE

Most Likely to Succeed

BETTY GRACE SPINKS

BILL BARGREN



MOST OUTSTANDING

FRESHMEN

Friendliest

MARGARET ALTMAN

DAVID COOK

MOST REPRESENTATIVE CADET

SUE CUTTS



Superlatives



MOST ATTRACTIVE

JEAN LE FEVRE

MOST HANDSOME

BILL BARGREN



MOST STUDIOUS

JEANETTE JORDAN BOB ALDEN



MOST VERSATILE GIRL

JEAN McKAMY



MOST VERSATILE BOY

BILL BARGREN

Superlatives

MOST DEPENDABLE

MARGIE FUSSELL
ASHFORD STALNAKER



WITTIEST

DAVID COOK
CHARLOTTE ELROD

MOST ATHLETIC

PATTI POWELL
DAVID COOK



May Court



Seated, left to right: Lourene Tate, May Queen Betty Irvine, Maid of Honor Betty Graham, Sue Tidwell.

Standing: Judy Flynt, Dot Gambrell, Margaret Altman, Margie Fussell, Betty Grace Spinks, Ruth Everett.

The crowning of the May Queen took place May first, and was the highlight of an all-day party at the school lodge. Amid singing, dancing, and good food, the students paused to observe the presentation of Sigma Pi Alpha Ribbons and Keys and the Cup to the social group (Delta Alpha Delta) having the highest scholastic standing.

Prophecy

What a town to be stuck in! Two hotels, four cafes, a shoe repair shop and five gas stations. WHY did my helicopter have to smash its propeller on the courthouse steeple of this town. Why couldn't I have "rammed" into Rockefeller Center or the Union Station. No, I have to be dumped in Katasquash, Georgia.

Come to think about it, though, I have met a few old friends. You know, I never would have guessed that Bill Bargren would own a small hotel in a town like this. I bet he could give me the low-down on a lot of people from the Junior College of '44. He's probably down at the river fishing. Think I'll run down and see him.

This town is a clean little place. Well, guess it should be, with Jane Cheves head of the Sanitary Department, so I see by the sign over there. What is that on the billboard over there? Hester "Sarong" Caffey and "Buck" Stalnaker in "South of the Borderline." Well, what do you know about that! There's a lot of noise over on that corner. Sounds like a sideshow—and it is, with Betty Grace Spinks as the barker. Wonder what she is selling . . . Oh, it's a hair remedy. Ho, here comes the law, represented by none other than Mr. Ralph O. Chapman. Always knew that boy would make good. Oh, dear, no! He's the prisoner, and they're going to lynch him with a new nylon rope. Look! It's a female deputy! What is this world coming to? It's Jean "Get Her Man" Le Fevre. There is Jeanette Jordan with a "nose for news" right on her trail. Here come Ruth Biles and camera. Busy little town!

Wonder what is on at the show. Well, the A, B, C Girls. Mary Elizabeth Anderson, Hope Baynes, and Eleanor Cox, the World's Most Beautiful Bubble Dancers! There is Linda De Bardeleden, proprietor of the cafe next door. Looking good, too! What's this? The Susan Daugherty School for Lottery Ticket Printing. She always did make good marks in journalism! Who's this coming, the mayor? Why, it's a woman mayor, and it's Betty Irvine. That must be the treasurer with her, and she is Elsa O'Callaghan.

"Fashionable Dresses, by Tate, with Hats by Graham." That must be Lourene's and Betty's Shop. Gosh! what a lot of noise. Must be a parade. Will you look who is leading it! Emily McNelley. She certainly can twist that baton! Look at Carolyn Murphy blow that saxophone!

Now, if I go down this street I should be at the pier. There is Bargren, fast asleep. "Hey, Bill, wake up!"

"Huh! What's the matter? The church on fire?"

"No, it's not. I just wanted to talk to you for a minute."

"O K. What do you want to know?"

"What has happened to the people from the class of '44?"

"\$64 question, huh?" Well, let me think a moment. I recall that they sent Van Nostrand to Congress just the other day from our fair city. Then there's the Parker-White Drive-In out the highway a piece. You remember Mildred and Dot? Mighty fine girls! Then, there's Judy Flynt, the champion checker-player over at the hotel. And Dot Gambrell has a little drug store and soda fountain over on Bickford Street. That street was named for Dot Bickford for gallantry in war. Yes, sir, she was made a captain of the WACs! There's Jean McKamy; you know she's running for governor. And Louise Jones has one of the most modern beauty shops in the state up on Main Street. Then, there's the young singer, Margie Fussell, at the Opera House; and Margie Blair plays the chimes at the church. She runs a Reducing Shop on the side. Ruth Everett and Marilyn Ginn married millionaires and moved to Havana. Then, you know that Dot Bloshtein and Sara Crane are at the Embassy in London. Sarah Lance is teaching Advanced Cigar Rolling at the Nicotine School for Reefers. And Sylvia Noveck is the cover girl on this month's "Take It Off or Leave It On."

I believe I heard that Charlotte Elrod has smashed another atom in organic chemistry, and Harriette Speer has written a book on the Mating Instincts of the White Ant.

Well, that's about all I can think of—except Esther Mickley is teaching English and tamale cooking technique to the Spaniards in Barcelona.

If this keeps up much longer there will be more complaints than compliments; and, anyway, it's only a little old prophecy. But if you stop and think about it, maybe—well, why not?—worse things have happened, haven't they?

BOARD OF REGENTS

UNIVERSITY SYSTEM CENTER

HAS ENLARGED ATLANTA'S EDUCATIONAL FACILITIES

FOR ATLANTA GRADUATES



YOU MAY ENTER THE JUNIOR COLLEGE FOR DAY CLASSES

OR THE

EVENING COLLEGE FOR CLASSES AFTER BUSINESS HOURS



UNIVERSITY SYSTEM OF GEORGIA

162 Luckie Street, N. W.

ATLANTA

GEORGIA

BOOKSTORE

ATLANTA JUNIOR COLLEGE

TEXT BOOKS

STICKERS

COLLEGE OUTLINES

SUPPLIES

Place your orders here for "Best Sellers" or any other book in print.

For Your
PLEASURE AND CONVENIENCE

We Sell

ICE COLD COCA-COLA

ARISTOCRAT MILK

DR. PEPPER

JONES' PURE FRUIT JUICE

CRISWELL'S PIES AND CAKES

CANADA DRY GINGER ALE

HERSHEY'S CANDY

GORDON'S POTATO CHIPS

"7" UP

KRISPY KREME DOUGHNUTS

HILL'S SANDWICHES

OLDS' ICE CREAM

... HOT FOODS ...

"NESTLE'S" HOT CHOCOLATE

"BAILEY'S" SUPREME COFFEE

We recommend these products to our students

"THE REFECTORY"

Courtesy is Never Rationed

at

Holzman's

CHRIS WING, FORMER EVENING COLLEGE
GRADUATE, WELCOMES AGAIN YOU
STUDENTS AND GRADUATES TO

The Gift Headquarters of
Atlanta and the South

Holzman's

One of America's FINER Jewelers



*Southern Belles from "My Maryland" cast:
Rader, Bickford, Caffey, Fussell, McKamy,
Van Nostrand, O'Callaghan*



*Chris, "King of the Refectory," during the
5 o'clock rush*

JOHN D. HOFFMAN

Teacher of Singing

Five Recording and Practice Studios
for Students, Without Extra Charge

2½ Auburn Ave. (Corner Peachtree)

Jackson 0674



**“It’s
right on
the
beam”**

“Hi. Recognize me? I’m one of your crowd. You see, I speak for Coca-Cola, and its abbreviation, ‘Coke.’ I speak for both. They mean the same thing. The gang say I look just like ‘Coke’ tastes. And you won’t get that *delicious and refreshing* taste this side of Coca-Cola. There’s no comparison.”

5¢

Drink
Coca-Cola
TRADE-MARK
Delicious and
Refreshing

Bus. Phone VE. 3595

FRED C. BLAIR
FLORIST

—
"INDIVIDUALITY IN FLOWERS"
—

1580 Piedmont Road, N. E.

ATLANTA

Compliments

of

DAVIS BROTHERS
RESTAURANT

"MEET YOUR FRIENDS"

AT

STANDARD DRUG CO.

"Up the Street from the College"

YOU ARE ALWAYS WELCOME

J. F. THOMPSON ENGRAVING CO.

WEDDING INVITATIONS
CALLING CARDS, STATIONERY
SPECIAL TO GRADUATES

226 Peachtree St.

Phone JA. 1646

MRS. HILL'S SANDWICHES
FRESH, DELICIOUS, SATISFYING
Sold in THE REFECTORY

Compliments of



RCA-VICTOR, PHILCO and ZENITH RADIOS
NORGE HOUSEHOLD APPLIANCES
PHONOGRAPH RECORDS

BAME'S, INC.

60 Broad St., N.W. WA. 5776 ATLANTA

RIDE OUR BUSES
MONDAY THRU THURSDAY
AND SAVE
THE WEEK-ENDS
FOR
OUR BOYS IN THE SERVICE

—there is a motor bus ready to take
you there . . . with comfort
and economy

For information, call WALnut 6300

GREYHOUND

BUS DEPOT of Atlanta

50 YEARS OF SERVICE TO ATLANTA

THIS was a small town when Gold Shield first began handling the laundry and the dry cleaning of Atlanta folks. We must have done a good job — and kept on doing it — because, like Atlanta, we have grown pretty big. Nine modern and well-equipped plants are ready to serve you. Call the nearest of them for full details for service that is better, but costs no more.

AMERICAN LAUNDRY	MA in 1016
CAPITAL CITY LAUNDRY	VE rnon 4711
DECATUR LAUNDRY	DE arborn 1606
EXCELSIOR LAUNDRY	WA lnut 2454
GUTHMAN LAUNDRY	WA lnut 8661
MAY'S LAUNDRY	HE mlock 5300
PIEDMONT LAUNDRY	WA lnut 7651
TRIO LAUNDRY	VE rnon 4721
TROY LAUNDRY	HE mlock 2766

... Ask Your
Route Salesman

Gold Shield Laundries



ANSLEY HOTEL

•

Just around the corner from the Georgia Junior College. Ideally located for Fraternity, Sorority and other organizations' banquets, dinners, etc.

•

A. J. CROCY
MANAGER

A Dinkler Hotel

WE congratulate the young ladies of the Atlanta Junior College who are members of the Delta Alpha Delta Sorority for their generosity in giving much of their time in collecting money for different drives.

They are untiring in their efforts in doing this work, and it was only through them that the collection in the March of Dimes Drive at the Rialto Theater was such a success. We congratulate these fine young ladies.

THE RIALTO THEATER

WHERE YOU SEE THE BETTER PICTURES

*"Oh, Darling,
It's Lovely!"*



Bridal pair — platinum,
complete \$210.00.



Beautiful but modestly
priced, yellow or white
gold, complete \$125.00



Platinum — 11 - diamond
engagement ring, plain
band, \$175.00.



In yellow gold only, dia-
mond solitaire and five-
diamond wedding band,
complete \$75.00.

MYRON € FREEMAN & BRO.

103 PEACHTREE STREET

" WATCH AND DIAMOND MERCHANTS "

WALTER R. THOMAS, President

ATLANTA

ROME

*In peace
and in war
Freeman
diamonds
are the
traditional
symbol of
love.*



*With firm
faith in the
future—
Unshaken, staunch
and true;
They pledge their
troth together,
For love and coun-
try, too.*

*His hand will be
the stronger
for her confiding
touch;
her heart will be the
lighter
for love that means
so much.*

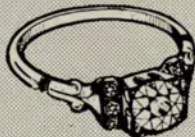
Federal Tax
Included



Yellow gold, diamond
studded bridal ensemble
\$25.00.



Platinum set with 16
Freeman quality dia-
monds \$300.00.



Exclusive Freeman
creation, platinum
\$500.00.



See this ring in
our windows, in
yellow or white
gold, \$175.00.



This pair a triumph of our
designers, platinum
\$450.00.

*"The
Largest
Diamond
House
South"*



Every Free-
man dia-
mond, regard-
less of price, is
individually se-
lected by our dia-
mond buyers who
are nationally known
authorities. Buy your
diamond from a store
who for over 50 years has
maintained the highest
standards of merchandising.
Convenient terms can be
easily arranged.

HARPER'S

Colonial Flower Shop



1094 PEACHTREE ST., N.E.

HEMLOCK 1181

B O W L . . .

The Right Way
at

BLICK'S

4 CONVENIENT CENTERS

BOWLING PALACE

Briarcliff Plaza

LUCKY STRIKE

671 Peachtree Street

KING PIN

840 Gordon Street

***BOWLING CENTER**

Top Floor Belle Isle Garage

(*Largest one-floor alley in the world)

100 — SANCTIONED ALLEYS — 100

Now the favorite sport of Atlantans
. . . bowl regularly for competition,
fun and health.

Sportsman's Headquarters in Atlanta

Bicycles and Supplies—Sporting Goods
Athletic Goods—Fishing Tackle
and Toys

WHOLESALE and RETAIL

WALTHOUR & HOOD CO.

Pryor St. at Auburn Ave.

MA. 7137

J. P. STEVENS Engraving Company

ESTABLISHED 1874



Wedding, Reception, Visiting Cards
Monogrammed Stationery



*Artistic Creations With
Fine Material*



110 Peachtree Street
ATLANTA

HUNGRY? IN A HURRY?
ON A BUDGET?

Delicious foods! Fast service!

•
Reasonable prices!
•

WOODINGS CAFETERIA

PALMER BLDG. — 39 MARIETTA ST.

Breakfast	Lunch	Dinner
6.45-9.15	11.00-2.15	5.00-7.30

If you would have Better Style, Better Quality, and probably an even Better Price . . . then you'd better see

•

MARCUS'

MEN'S WEAR SPECIALISTS

•
62 Peachtree St.

61 N. Broad St.

GENERAL SPECIALTY COMPANY

Manufacturers and Distributors

BANNERS, BADGES

CELLULOID BUTTONS, FLAGS

FELT NOVELTIES, ETC.

WAlnut 5127 — 72 Broad Street, N.W.

IDA LEE KIRK

ATLANTA, GA.

★
THE
BEST DRESSED MEN
WEAR



ALBANY ATHENS
ATLANTA COLUMBUS
LA GRANGE MACON
SAVANNAH

★

Autographs

