

# The GATEWAY



1945

LD 1965  
.G37  
1945  
c.2





University System  
of Georgia  
GEORGIA STATE COLLEGE  
LIBRARY

---



J. Colson



1 9 4 5  
G A T E W A Y



ELSA O'CALLAGHAN  
*Editor*

COLEY KELLAM  
*Business Manager*

*Published by*  
**THE STUDENT BODY**  
*of the*  
**ATLANTA JUNIOR COLLEGE**



# DEDICATION



MRS. P. M. TERRELL

We affectionately dedicate this issue of THE GATEWAY to Mrs. P. M. Terrell, who is constantly ready to assist with our problems. Her cheerful smile, willingness, and helpfulness with which we are greeted when visiting "Hob-Nob Inn" will be long remembered by the students of the Junior College.



~~LD 1961  
G85 G3  
1945  
C.2~~

LD 1965  
.G37  
1945  
C.2

# Foreword

In these pages you'll find some of the highlights of the 1944-45 school year of the Junior College. It has been a year that will long be remembered as the deciding year of the great global war.

Along with our school work many of us found time to contribute to the war effort by working at part-time jobs and contributing to and taking part in many and various war activities. A part of our enrollment was composed of students studying in the Cadet Nurse Corps. The rest of us have tried hard to do our part cheerfully and enthusiastically, and to follow the high ideals set up by our leaders.

If these pages serve to bring back the happier moments of this eventful year then the efforts of its staff will not have been in vain.



# FACULTY



GEORGE M. SPARKS  
A.B., M.A., LL.D.  
*Director*  
Mercer University; Graduate  
summer work  
Oxford, England



V. V. LAVROFF  
B.S.C., M.A.  
*Secretary and Treasurer*  
Junior College, Harbin, China  
Georgia School of Technol-  
ogy; Emory University



NELL HAMILTON TROTTER  
A.B., M.A.  
*Dean*  
University of Arkansas;  
University of Wisconsin



R. LUCIAN BELL  
A.B.  
University of Georgia; Emory  
University Graduate School;  
University of Tennessee Med-  
ical School



NAN BRYAN  
A.B., M.A.  
University of Illinois



ELMER G. CAMPBELL  
A.B., M.S., Ph.D.  
Hiram College of Ohio; Per-  
due; University of Chicago



R. A. CHRISTOPHER  
B.S.C.  
University of Georgia



WILLIAM HARTSFIELD



# FACULTY



R. R. HOLLINGSWORTH  
A.B., M.A., Ph.D.  
University of Washington;  
Teachers' College of Columbia  
University; University of  
North Carolina Graduate  
Work; University of Chicago;  
University of Southern  
California



HAL HULSEY  
A.B., M.A.  
University of Georgia; Grad-  
uate Work, University of  
Georgia; Emory  
University



PICKETT HYNES  
B.S.C., M.A.  
Georgia Evening College;  
Emory University; University  
of Georgia



WILLIAM P. LAYTON  
B.Ph.  
Emory University



W. C. MADDOX  
A.B., A.M.  
University of Oglethorpe;  
University of Madrid;  
National University of Mexico



CARL MAUELSHAGEN  
A.B., M.A., Ph.D.  
University of Tennessee;  
University of Chicago;  
University of Minnesota



HAZEL POSS  
B.S.  
University of Georgia School  
of Fine Arts, Chautauqua,  
New York



JAMES A. ROUTH  
A.B., Ph.D.  
Johns Hopkins University



LINNIE TALLANT  
Registered Nurse



# SCHOOL OFFICERS



MARGARET ALTMAN  
*President*



IRMA HATHCOCK  
*Vice-President*



KAY WOODMAN  
*Secretary*



HELEN COX  
*Treasurer*



# Sophomore Officers



OSLIN

AYERS

RADER

MORGAN

*President* . . . . . JUNE ANN RADER

*Vice-President* . . . . . ZANE AYERS

*Secretary* . . . . . CHARLOTTE OSLIN

*Treasurer* . . . . . MARTHA MORGAN



# Sophomores



BOB ALDEN—Student Council '44-'45; Inter-Fraternity Council '43-'45; Phi Sigma Alpha '43-'45, President '44-'45; University Signal '43-'45, Co-Feature Editor '44-'45; Debate Club '44-'45, President '44-'45; Superlatives '44-'45.



RUTH BILES—Chi Rho Sigma '43-'45, Social Chairman '44-'45; Glee Club '44-'45; Gateway Picture Editor '44-'45; Assistant Athletic Director '44-'45; Dramatic Club '43-'44; Masque and Wig '44-'45; International Relations Club '44-'45; Superlatives '44-'45.



MARGARET LOVE ALTMAN—Student Council '43-'45, School President '44-'45; Inter-Fraternity Council '43-'45; Sigma Pi Alpha '43-'45; Delta Alpha Delta '43-'45, Scribe '44-'45; International Relations Club '44-'45; Baptist Student Union '43-'45; Debate Club '43-'44; Dramatic Club '43-'44; Gateway Picture Editor '43-'44; University Signal Business Editor '43-'44; Freshman President; May Court '43-'44; Superlatives '43-'44.



ELIZABETH BLAIR—Sigma Pi Alpha '43-'45; Delta Alpha Delta '43-'45; Wesleyan Foundation Union '44-'45; Student Council '43-'44; International Relations Club '44-'45; Phi Sigma Alpha Sponsor '44-'45; Freshman Treasurer.



ZANE AYERS—Delta Alpha Delta '43-'45, Pledge Captain '44-'45; Baptist Student Union '43-'45; President '44-'45; Sophomore Vice-President; Superlatives '44-'45.

ANN BURNS—Wesleyan Foundation Union '44-'45.

EVELYN BAILEY—Chi Rho Sigma '43-'45.

HESTER CAFFEY—Delta Alpha Delta '42-'43, Secretary '43-'44; Dramatic Club '42-'43; Glee Club '42-'44; University Signal '43-'44; May Court '42-'43; Vice-President Sophomore Class.

DOROTHY BELL—Inter-Fraternity Council '44-'45; Chi Rho Sigma '43-'45, President '44-'45; Masque and Wig '44-'45; Sigma Pi Alpha '43-'44; Home Economics Club, Vice-President '43-'44; Gateway Staff '44-'45.

THOMAS CAGLE—Phi Sigma Alpha '43-'45.





# Sophomores



MARY CAHILL—Delta Alpha Delta '43-'45;  
Dramatic Club '43-'44.



VIRGINIA COX—International Relations Club  
'44-'45; Delta Alpha Delta '43-'45.



FRANCES CHAMBERS—Chi Rho Sigma '43-  
'45; Secretary '44-'45; Gateway '44-'45.



NAN DAVENPORT—Delta Alpha Delta '44-  
'45; Debate Club '44-'45.



JUNE COLEMAN—Delta Alpha Delta '44-'45.



PATTY DIVINE—Baptist Student Club '44-'45;  
Masque and Wig '44-'45.



BARBARA ANN COLLIER—Delta Alpha Del-  
ta '43-'45.



DOT DONALDSON—Delta Alpha Delta '44-  
'45; International Relations Club '44-'45.



HELEN COX—Student Council '44-'45, Treas-  
urer '44-'45; Sigma Pi Alpha '43-'45; Internation-  
al Relations Club '44-'45; University Signal, Co-  
Associate Editor '43-'45; Debate Club '43-'44.



ANNE FOSTER—Delta Alpha Delta '43-'45,  
Sergeant of Arms '44-'45; Baptist Student Union  
'43-'44.



# Sophomores



MARY ELIZABETH GARNER—Delta Alpha  
Delta '44-'45.

COLEY KELLAM—Chi Rho Sigma '43-'45;  
International Relations Club, President '44-'45;  
Masque and Wig, President '44-'45; Sigma Pi  
Alpha '43-'44; Debate Club '43-'44; Gateway  
Business Manager '44-'45.



MARTHA GRIGGS—Home Economics Club '43-  
'44.

JANE JONES—Chi Rho Sigma '43-'45, Treas-  
urer '44-'45; Athletic Director '44-'45; Phi Sigma  
Alpha Sponsor '43-'44; "Miss Chi Rho Sigma"  
'43-'44.



IRMA HATHCOCK—Student Council, Vice  
President '44-'45; Inter-Fraternity Council '44-  
'45; Sigma Pi Alpha '43-'45; Delta Alpha Delta  
'43-'45, Vice-President '44-'45; Wesleyan Founda-  
tion Union '43-'45, President '44-'45.

JO ANN LEWIS—Chi Rho Sigma 44-'45; Glee  
Club '44-'45.



MARIAN HINE—Sigma Pi Alpha '44-'45;  
Masque and Wig '44-'45, Business Manager '44-  
'45; Delta Alpha Delta '44-'45.

ROGER A. LORRAIN—Dramatic Club '43-  
'44; International Relations Club '44-'45.




JOYCE HOLSENBECK—Inter-Fraternity Coun-  
cil '44-'45; Delta Alpha Delta '43-'45.

JEAN LUTTRELL—Student Council '44-'45;  
Delta Alpha Delta '43-'45; Wesleyan Foundation  
Union '44-'45.







# Sophomores





JACK McLEAN—Phi Sigma Alpha '44-'45;  
Masque and Wig '44-'45.

MARY ELIZABETH NEELY—Delta Alpha  
Delta '43-'45.





FRANCES McWHIRTER—Student Council  
'43-'45; Delta Alpha Delta '43-'45.

ELSA O'CALLAGHAN—Student Council '44-  
'45; Inter-Fraternity Council '42-'45, Vice-Presi-  
dent '42-'44, Chairman '44-'45; Chi Rho Sigma  
'42-'45, Secretary-Treasurer '43-'44; Glee Club  
'42-'45, Vice-President '42-'43, Secretary-Treasurer  
'43-'44; Gateway '42-'45, Picture Editor '42-'43,  
Co-Editor '43-'44, Editor '44-'45; Debate Club  
'42-'44; Dramatic Club '42-'44, President '42-'44;  
Wesleyan Foundation Union '44-'45; Superlatives  
'44-'45.





FAYE MABRY—Athletic Director '44-'45.

JOY OLSEN—Chi Rho Sigma '42-'43, '44-'45.




CLAIRE MAFFETT—Sigma Pi Alpha '44-'45;  
Delta Alpha Delta '43-'45; Baptist Student Union  
'44-'45.

CHARLOTTE OSLIN—Sigma Pi Alpha '43-  
'45; Delta Alpha Delta '43-'45, Chaplain '44-'45;  
Wesleyan Foundation Union '44-'45; Home Eco-  
nomics Club '43-'44; Sophomore Secretary.



MARTHA MORGAN—Student Council '44-'45;  
Sigma Pi Alpha '43-'45; Delta Alpha Delta '43-  
'45; Home Economics Club '43-'44; Sophomore  
Treasurer.

CAROLINE MURPHY PERRY—Sigma Pi Al-  
pha 44-'45.





# Sophomores



MARY CATHERINE PINDAR—Transfer from GSCW.



JUNE VAN SICKLE—Sigma Pi Alpha '43-'45.



BETTY JANE POWERS—Chi Rho Sigma '44-'45.



BARBARA SIKES—Student Council '43-'44; Sigma Pi Alpha '43-'45; Delta Alpha Delta '43-'44; International Relations Club, Secretary and Treasurer '44-'45; University Signal, Co-Associate Editor '43-'44; Co-Editor '44-'45; Debate Club '43-'44.



JUNE ANN RADER—Student Council '44-'45; Delta Alpha Delta '43-'45; Glee Club '43-'45; Flambo '43-'44; Gateway '43-'44; Sophomore President.



JEAN SMITH—Delta Alpha Delta '43-'45.



NORMA JANE RADER — Inter-Fraternity Council '44-'45; Delta Alpha Delta '43-'45, President '44-'45; Glee Club '43-'45; Masque and Wig '44-'45; Student Council 43-'44; Gateway '43-'44; Superlative '44-'45.



MARGARET WEHLING—Delta Alpha Delta '44-'45; Masque and Wig '44-'45.



DORIS SHEEL—



ELLINOR WHITEFORD—Student Council '43-'45; Chi Rho Sigma '43-'45 Masque and Wig '44-'45; Gateway, Assistant Editor '44-'45; Inter-Fraternity Council '43-'44; Dramatic Club, Vice-President 43-'44.



# Sophomores



ROBERT WHITEFORD—Phi Sigma Alpha '43-'45. Laboratory instructor in Physical and Biological Sciences.

KAY WOODMAN—Student Council '43-'45, Secretary '44-'45; Sigma Pi Alpha '43-'45; Delta Alpha Delta '43-'45, Treasurer '44-'45; Debate Club, Secretary and Treasurer '43-'44; Freshman Vice-President, Baptist Student Union '43-'44; Signal '43-'44; Dramatic Club '43-'44; Gateway '43-'44, Assistant Editor.



CATHERINE WILLIAMSON — Delta Alpha Delta '43-'45, Secretary '44-'45; Baptist Student Union '44-'45, Second Vice-President; Glee Club '43-'45; Superlatives '44-'45.

DARLENE YARBROUGH—International Relations Club '44-'45.



ISABELLE WILLIAMSON — Inter-Fraternity Council '44-'45; Chi Rho Sigma '43-'45, Vice-President '44-'45; International Relations Club Publicity Chairman '44-'45; Debate Club '44-'45; Masque and Wig Secretary and Treasurer '44-'45; Gateway '44-'45; Dramatic Club '43-'44; Superlative '44-'45.

BARBARA YARN—Chi Rho Sigma '42-'43, '44-'45.



## SOPHOMORES NOT PICTURED

- |                 |                   |                    |
|-----------------|-------------------|--------------------|
| BILL BARGREN    | MARION FRANKLIN   | LILLIAN SAPPINGTON |
| DAN BERRY       | MARY HEETH        | LUCILLE SHIPPEN    |
| LAVERNE COOPER  | ROTELLE HIGHTOWER | BEATRICE SIROTA    |
| OWEN COOPER     | ANNE JOYNER       | DENNIS STILL       |
| GRACE CROSSWELL | CHARLES McDERMON  | FRANCES TURNER     |
|                 | LONETTE O'QUINN   |                    |



# FRESHMAN OFFICERS



LARMORE      TATE      YARBOROUGH

*President* . . . . . BILLIE LARMORE

*Vice-President* . . . . . HELEN YARBOROUGH

*Secretary* . . . . . POLLY TATE

*Treasurer* . . . . . KATHERINE KENNEDY



# Freshmen . . .

BARBARA ALLEN  
North Fulton High

FRANCES BELL  
Messick High, Memphis, Tennessee

BETTY BENNETT  
Decatur Girls High

IVAN BORN  
Jonesboro High

MARY LOUISE BOWMAN  
Smyrna-Fitzhugh High

BARBARA BREWTON  
College Park High

PEGGIE BURPITT  
College Park High

FRANCES CARSON  
Minot High, North Dakota

MARY FRANCES CLARKE  
North Fulton High

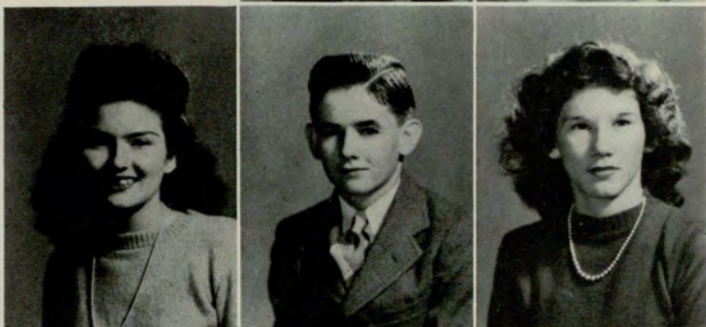
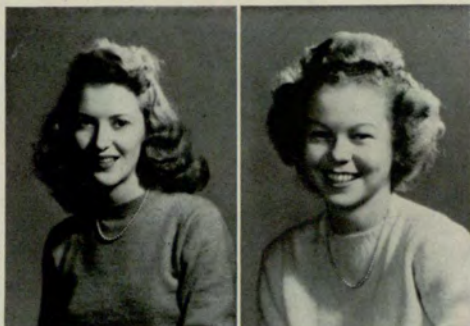
HELEN COLWELL  
Sacred Heart Academy—Alabama

JUNE JOAN CROCKER  
Napsonian School

DOROTHY DANIEL  
Atlanta Girls High

ETHEL DAVIS  
Fulton High

ANNE DALE  
North Fulton High





# Freshmen . . .

EDWARD DOLAN  
West Fulton High

SUSANNE DONALDSON  
Atlanta Girls High

BARNEY EBERHART  
McDonough High

JERRY BOYKIN ETHERIDGE  
Fulton High

ROSE FAULKNER  
Decatur Girls High

HELEN MARIE FISK  
North Fulton High

ROBERT FORGAY  
Russell High

DOROTHY JEANETTE FOWLER  
Russell High

HOPE GIBSON  
Mt. Zion High

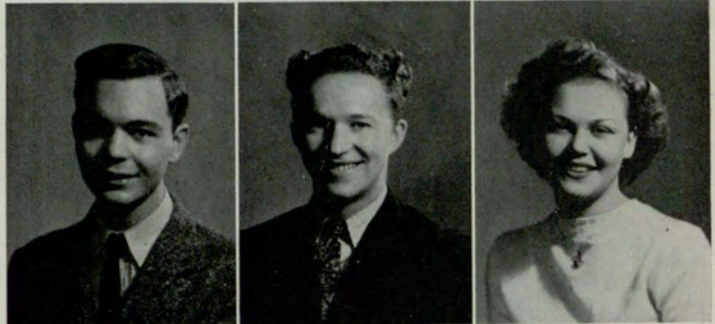
RUTH GILLESPIE  
Atlanta Girls High

JACKIE GRACE  
Druid Hills High

BETTY JANE GRIFFITH  
Atlanta Girls High

PAUL HANNA  
Decatur Boys High

HILDA HARRIS  
Fulton High





# Freshmen . . .

RHETA HELBLE  
Decatur Girls High

ANNETTE HENRY  
College Park High

MARY JOAN HILLS  
College Park High

JACQUELINE HOLLEY  
Atlanta Girls High

VIRGINIA RUTH HOLLEY  
Atlanta Girls High

GWEN JOHNSON  
Atlanta Girls High

VIRGINIA JONES  
Decatur Girls High

SARAH KENT  
Decatur Girls High

BILLIE LOUISE LARMORE  
Atlanta Girls High

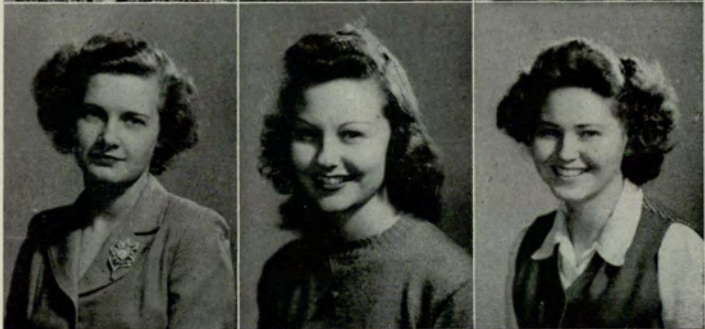
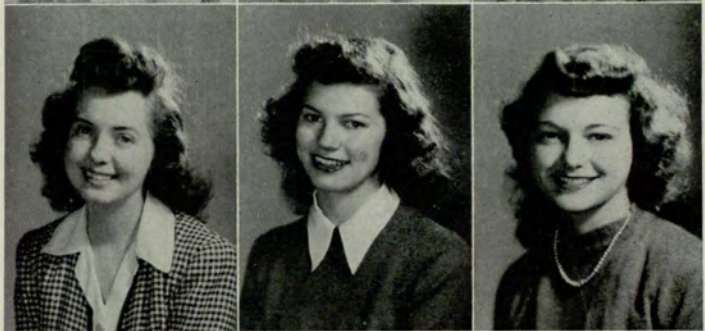
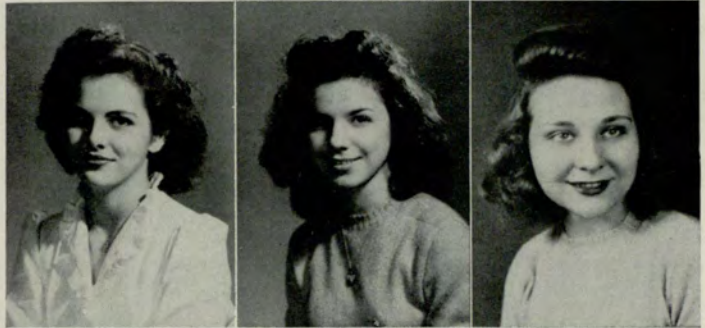
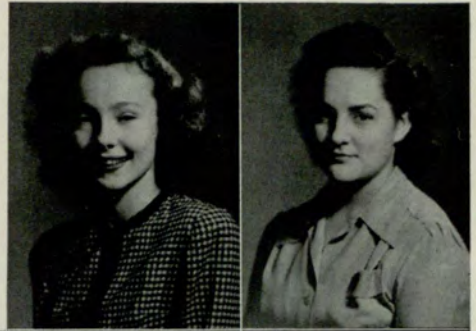
SHIRLEY LAWSON  
Decatur Girls High

SHIRLEE LINGERICH  
Decatur Girls High

AUTRIE VIRGINIA LITTLE  
Atlanta Girls High

LOUISE LOCKHART  
Atlanta Girls High

BETTY McCORD  
Hapeville High





# Freshmen . . .

MARGARET MALONE  
Druid Hills High

JULIANNE MANSTON  
Atlanta Girls High

GLORIA MASON  
Decatur Girls High

CAROLYN McENTIRE  
Atlanta Girls High

LOIS A. MIXSON  
Ensley High—Birmingham, Ala.

DOROTHY MOCK  
West Fulton High

BETTY MONDAY  
Fulton High

KATHERINE MOORE  
Decatur Girls High

ROY DONALD MORRIS  
West Fulton High

DARRELL MURRAY  
Douglasville High

M. CHRISTINE PARKER  
Millen, Georgia

MARY GRACE PITTS  
College Park High

BARBARA PLAATJE  
Avondale High

HERSCHEL L. PLESS  
Russell High





# Freshmen . . .

CAROLYN REID  
Decatur Girls High

MARIE ROGERS  
Fulton High

SADIE SCOTT  
North Fulton High

JOYCE SELLERS  
Russell High

MARTHA SETTLE  
Atlanta Girls High

JANE SEVERIN  
Decatur Girls High

SARA SHIELDS  
Decatur Girls High

DORIS VAN SICKLE  
Atlanta Girls High

MARY ELIZABETH SHANNON  
North Fulton High

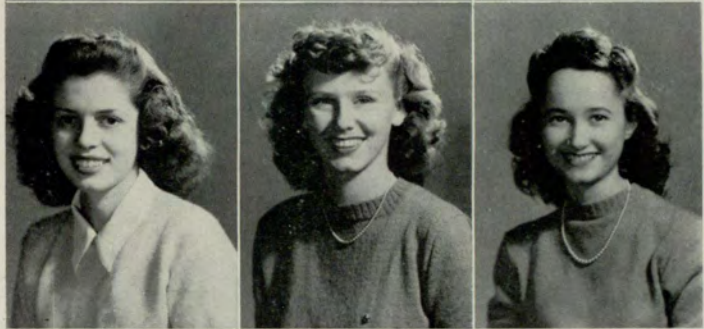
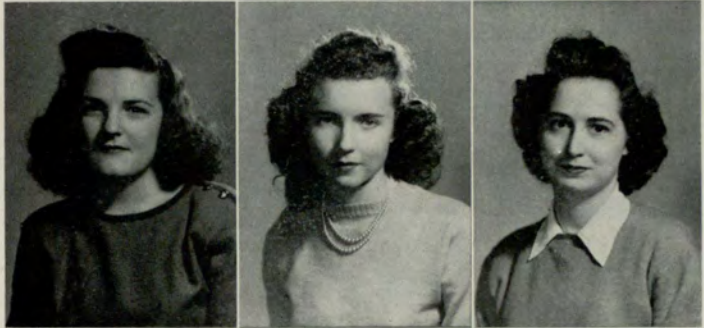
DAISY WELLER SMITH  
Semple High, New York

LOUISE SMITH  
North Fulton High

POLLY TATE  
Napsonian School

CAROLYN WALDEN  
Clarkston High

RICHARD WALLER  
Newnan High





# Freshmen . . .

BOB WATSON  
Atlanta Boys High

BETTY WHITE  
South West DeKalb High

ROBERT WHITE  
Druid Hills High

BETTE WHITING  
Decatur Girls High

MARY WHITT  
Atlanta Girls High

DORIS WILLIS  
Fulton High

THEODORE WILDER  
Griffin—Spaulding High

MARTHA WILEY  
Atlanta Girls High

ELBERT "JOE" WOODS  
North Clayton High

HELEN WRIGHT  
Atlanta Girls High

ELSIE ZIMMERMAN  
Atlanta Girls High

MARY ZAKHEIM  
Commercial High





# *Freshmen not Pictured*

WILLIAM BASSETT  
MARGARET BLINCOE  
JOHN BUCKAM  
MARTHA BONNER  
BETTIE BOWEN  
BRYANT BRADY  
GRACE BRANNON  
HELEN CARPENTER  
EILEEN CASON  
JANE CHEVES  
KATHRYN EDWARDS  
GLADYS EVANS  
SYLVIA FELDMAN  
ROSA LEE FREEMAN  
VIRGINIA GREGORY

BETTY GRANT  
WILLIAM HAMMOCK  
JESSIE HARRIS  
LOUISE HARRIS  
JAMES HAWK  
ADELE HENNING  
HOWARD JOHNSON  
LOUISE MANSFIELD  
PRENTICE McCONNELL  
SARAH McGARITY  
MARYWILL MURPHY  
MARGARET MYERS  
MARY OUTTEN  
ADA O'QUINN

NEWTIE POTTS  
BILL RICHARDSON  
FLORENCE RICHARDSON  
BARBARA SCOTT  
ROBERT SESSIONS  
DOROTHEA SMITH  
NEOMA SMITH  
SARA SOUTHARD  
MARY TIMMONS  
JIMMIE VERNER  
DOROTHY WALFORD  
BETTE WARD  
LUBA WERBIN  
ELIZABETH YOUNG



*Winners of "Cutest Freshmen" contest Paul Hanna and Jackie Holley are congratulated by Freshmen President Billie Larmore.*



# *Cadet Nurse Corps*

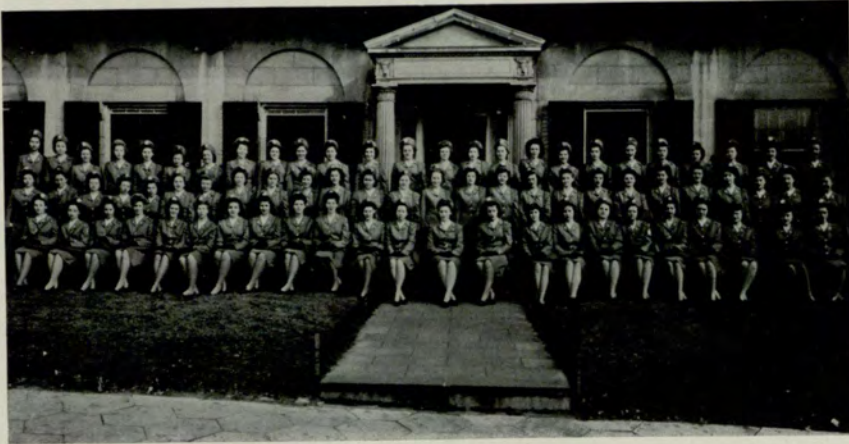
With the opening of the 1943 Fall term, approximately 150 pre-cadet nurses began their academic program in the Junior College. This year more than twice that number enrolled and each succeeding term, sixty or seventy more joined the first group for courses here in Chemistry, Micro-biology, Physiology, Anatomy, Sociology, Psychology.

The nursing program, of which they are a part, is centralized at the University in Athens. The three participating hospitals in the program in Atlanta are Crawford Long, Piedmont, and Georgia Baptist.

The program in cooperation with the Junior College is known as the Collegiate Program for the Atlanta Schools of Nursing.



# CADET NURSE CORPS



*Crawford Long Hospital Cadet Nurses*



*Georgia Baptist Hospital Cadet Nurses*



*Piedmont Hospital Cadet Nurses*



# *Around* THE SCHOOL





# Organizations



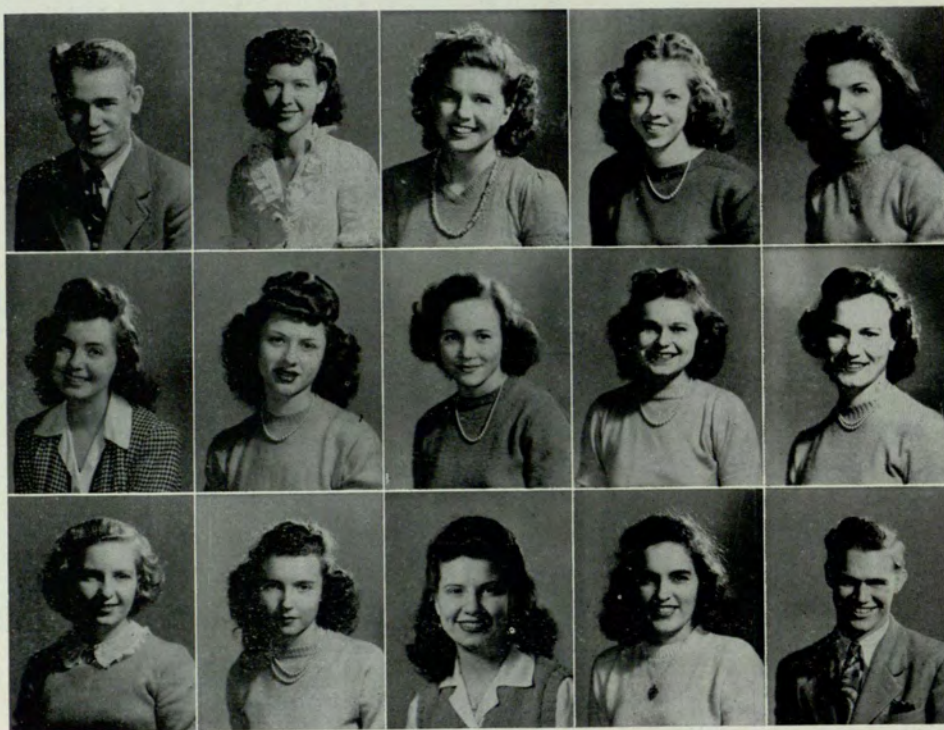
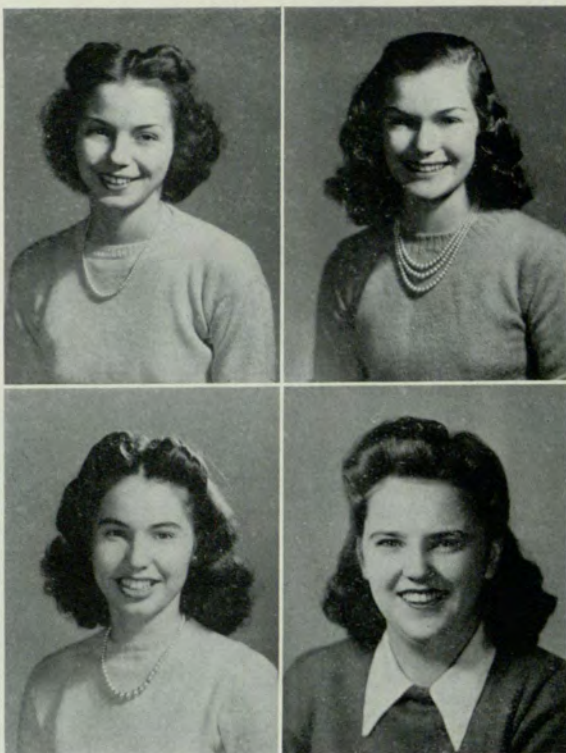
Through these organizations the social and scholastic aspects of the school are bound together.



# STUDENT COUNCIL

This governing body is organized to express the will of the majority of the student body in the guidance of student activities, to strive toward an even closer understanding between the faculty and students, and to work toward the betterment and growth of the Junior College and its students.

- President* . . . . . MARGARET ALTMAN  
*Vice-President* . . . . . IRMA HATHCOCK  
*Secretary* . . . . . KAY WOODMAN  
*Treasurer* . . . . . HELEN COX



*Top Row:* Bob Alden, Elizabeth Blair, Peggie Burpitt, Betty Jane Griffith, Jackie Holley. *Center Row:* Billie Larmore, Jean Luttrell, Frances McWhirter, Martha Morgan, Elsa O'Callaghan. *Bottom Row:* June Ann Rader, Joyce Sellers, Barbara Sikes, Ellinor Whiteford, Elbert Woods



# SIGMA PI ALPHA

The Sigma Pi Alpha is composed of the members of the student body who have a scholastic average of B plus for the current quarter and for a grand average. Keys are awarded to those members who are elected to Sigma Pi Alpha for four consecutive quarters, and who have been active in school affairs.



*First Row:* Margaret Altman—*Key member*, Elizabeth Blair—*Key member*, Helen Cox—*Key Member*

*Second Row:* Charlotte Oslin—*Key Member*, Barbara Sikes—*Key Member*, June Van Sickle—*Key Member*, Kay Woodman—*Key Member*

*Third Row:* Claire Maffett—*Key Member*, Peggie Burpitt, Helen Colwell, June Joan Crocker

*Fourth Row:* Dorothy Daniel, Pat Divine, Mary Jo Hills, Marian Hine

*Fifth Row:* Sarah Kent, Billie Larmore, Martha Morgan, Caroline Perry

*Sixth Row:* Barbara Plaatje, Jane Severin, Mary Elizabeth Shannon, Doris Van Sickle, Mary Zakheim, Martha Wiley

*Not pictured:* Katherine Edwards, Sylvia Feldman



# INTER-FRATERNITY COUNCIL

The purpose of the Inter-Fraternity Council is to promote fellowship and cooperation between the various fraternal organizations of the Atlanta Junior College.



ELSA O'CALLAGHAN—*Chairman*

*Chi Rho Sigma*



BOB ALDEN

*Phi Sigma Alpha*



MARGARET ALTMAN

*Delta Alpha Delta*



DOROTHY BELL

*Chi Rho Sigma*



DOROTHY DANIEL

*Chi Rho Sigma*



IRMA HATHCOCK

*Delta Alpha Delta*



MARY JO HILLS

*Delta Alpha Delta*



JOYCE HOLSENBECK

*Delta Alpha Delta*



NORMA JANE RADER

*Delta Alpha Delta*



JOE WOODS

*Phi Sigma Alpha*



ISABELE WILLIAMSON

*Chi Rho Sigma*



# . . . . DELTA ALPHA DELTA

The Delta Alpha Delta Sorority was organized as a woman's fraternity to promote understanding, to enjoy the fellowship of one another, and to stand for the right, the decent, and the lawful.

Our purpose is to perfect, and in our daily lives carry out, the meaning of sisterhood. To try, ourselves, to reach the highest standards possible physically, mentally, and morally. To be forgetful of ourselves and mindful of others.



NORMA-JANE RADER  
*President*



IRMA HATHCOCK  
*Vice-President*



CATHERINE WILLIAMSON  
*Secretary*



KAY WOODMAN  
*Treasurer*



ZANE AYERS  
*Pledge Captain*



MARGARET ALTMAN  
*Scribe*



CHARLOTTE OSLIN  
*Chaplain*



ANNE FOSTER  
*Sergeant-at-Arms*



# DELTA ALPHA DELTA



BARBARA ALLEN

BETTY BENNETT

ELIZABETH BLAIR

MARY LOUISE BOWMAN



BARBARA ANNE BREWTON

PEGGIE BURPITT

MARY CAHILL

MARY FRANCES CLARKE



JUNE COLEMAN

BARBARA ANNE COLLIER

JUNE JOAN CROCKER

ETHEL DAVIS



NAN DAVENPORT

DOT DONALDSON

MARY GARNER

RUTH GILLESPIE



JACKIE GRACE

BETTY JANE GRIFFITH

HILDA HARRIS

MARY JO HILLS



MARIAN HINE

JACKIE HOLLEY

VIRGINIA HOLLEY

JOYCE HOLSENBECK

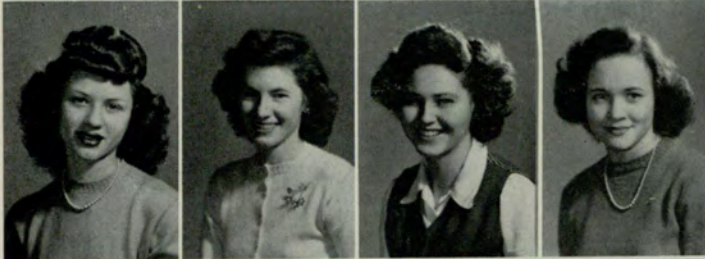


# DELTA ALPHA DELTA



VIRGINIA JONES

BILLIE LARMORE



JEAN LUTTRELL

CLAIRE MAFFETT

BETTY MCCORD

FRANCES MCWHIRTER



MARGARET MALONE

BETTY MONDAY

MARTHA MORGAN

MARY ELIZABETH NEELY



BARBARA PLAATZJE

JUNE ANN RADER

MARIE ROGERS

JOYCE SELLERS



MARTHA SETTLE

MARY ELIZABETH SHANNON

DAISY WELLER SMITH

JEAN SMITH



LOUISE SMITH

MARGARET WEHLING

DORIS VAN SICKLE

HELEN WRIGHT

*Not pictured*—LOUISE HARRIS, ADELE HENNING, NEWTIE POTTS, JIMMIE VERNER,  
BETTY WARD



D. A. D.

# Snapshots



- 1—Smile please! at Christmas formal. . . . .
- 2—May I cut in? Ah, please!
- 3—Rush tea at "Pres." Rader's igloo.
- 4—Caught at Tavern party. Is that a Coca-Cola bottle with a candle in it?
- 5—Down dat lonesom' road! Oh, boy!

- 6—"Pres." Rader and date; notice jujitsu grip.
- 7—Two men and one gal. . . . Notice Morgan's two handed grip on one lonely pretzel.
- 8—Helen can't smile, busy eating pretzels.
- 9—Feet hurt, Martha? Make him apologize!



# CHI RHO SIGMA

"We, the members of Chi Rho Sigma, pledge ourselves to a noble and kind sisterhood. We again pledge ourselves to constantly strive to ever be helpful, active, and ready to aid one another and mankind."

—The pledge and purpose of this organization, which also endeavors to attain higher ideals and promote achievement in the school life of Junior College students.



DOROTHY BELL . . . . . *President*

ISABELLE WILLIAMSON . . . . . *Vice-President*

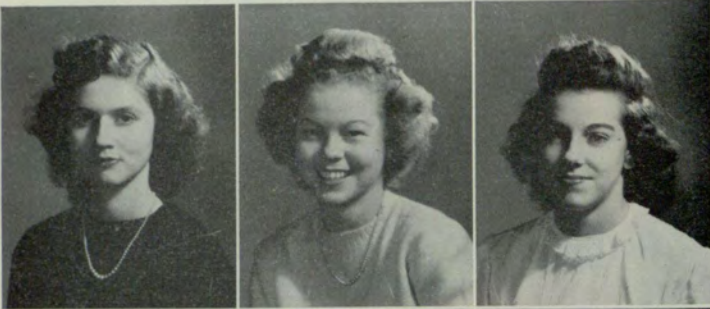
FRANCES CHAMBERS . . . . . *Secretary*

JANE JONES . . . . . *Treasurer*

RUTH BILES . . . . . *Social Chairman*



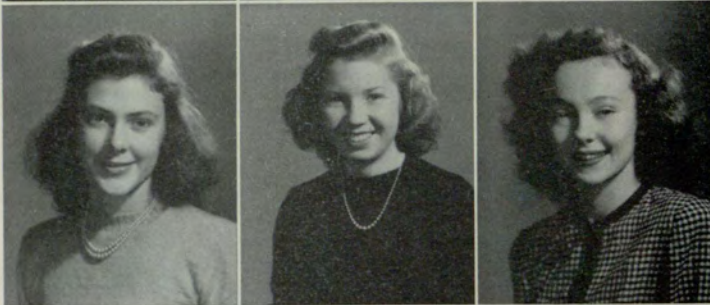
# CHI RHO SIGMA



EVELYN BAILEY

FRANCES BELL

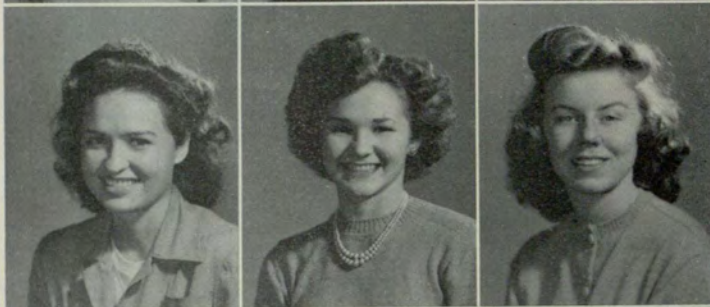
HELEN COLWELL



ANNE DALE

DOROTHY DANIEL

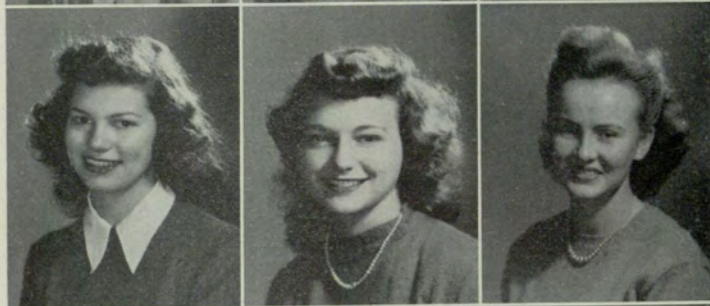
RHETA HELBLE



GWEN JOHNSON

COLEY KELLAM

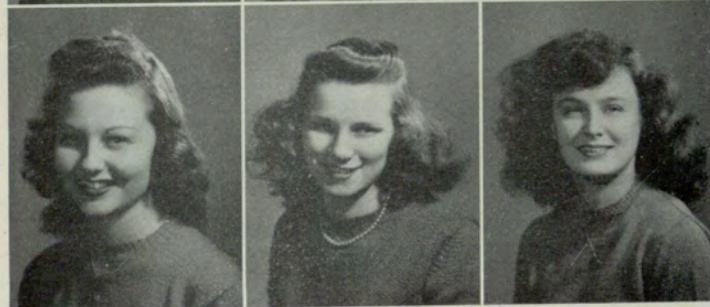
SARAH KENT



SHIRLEY LAWSON

SHIRLEE LENCHERICH

JO ANN LEWIS



LOUISE LOCKHART

CAROLYN McENTIRE

JULIANNE MANSTON



# CHI RHO SIGMA



GLORIA MASON

DOROTHY MOCK

KATHERINE MOORE

ELSA O'CALLAGHAN

JOY OLSON

BETTY JANE POWERS

JANE SEVERIN

SARA SHIELDS

POLLY TATE

CAROLYN WALDEN

BETTY WHITE

BETTE WHITING

ELLINOR WHITEFORD

BABARA YARN

*Not Pictured  
Betty Bowen, Virginia Gregory, Florence Richardson,  
Lucille Shippen*





1—All out for the freshmen  
 2—Dot and Charlie  
 3—Time out from trotting  
 4—House party members entertain pledges  
 5—Chicks for the chicks  
 6—Doughnuts, coffee, eggs—Let's eat

7—XP's pride and joy—MEN!  
 8—Ruth and Marcus, strictly corn  
 9—Techwood dorm steak fry  
 10—Dresses for a change—Tea at Jane's  
 11—Loafing as usual



# UNIVERSITY SIGNAL

The University Signal, combined publication of the Junior College and Evening College contains news, features, and pictures of both schools.

The stories, columns, and editorials are written by the students and reflect their view of school activities. The Signal endeavors to bring to its readers a clear picture of school happenings.



BARBARA SIKES, HELEN COX . . . . . *Co-Editors*

BOB ALDEN, BOB WATSON . . . . . *Co-Feature Editors*

JACKIE GRACE . . . . . *Advertising Manager*



*The editors hard at work . . . . .*



# GLEE CLUB



JOHN D. HOFFMAN  
*Director*

*First Row:*

- President* . . . . . PEGGIE BURPITT  
*Vice-President* . . . . . HELEN FISK  
*Secretary-Treasurer* . . HELEN WRIGHT  
*Librarian* . . . . . MARY JO HILLS

*Second Row:* Ruth Biles, Barbara Brew-  
ton, Mary Frances Clarke, Helen Col-  
well

*Third Row:* Ethel Davis, Rose Faulkner,  
Annette Henry, Virginia Holley

*Fourth Row:* Louise Lockhart, Elsa  
O'Callaghan, Mary Grace Pitts, June  
Ann Rader.

*Fifth Row:* Norma Jane Rader, Marie  
Rogers, Martha Settle, Catherine Wil-  
liamson, Claire Maffett.







HAZEL POSS  
*Director*

COLEY KELLAM—*President*

PEGGIE BURPITT—*Vice-President*

ISABELLE WILLIAMSON—*Secretary-Treasurer*

MARIAN HINE—*Business Manager*

DOROTHY BELL

RUTH BILES

PAT DIVINE

JACK McLEAN

JULIANNE MANSTON

NORMA-JANE RADER

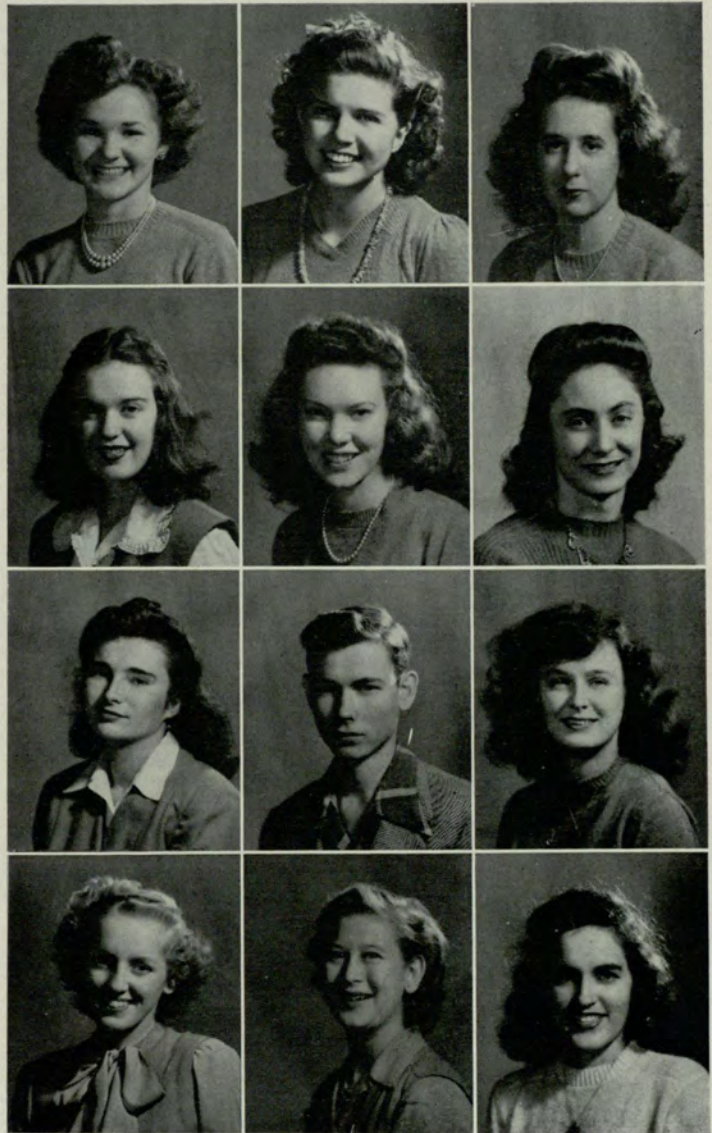
MARGARET WEHLING

ELLINOR WHITEFORD

*Not pictured*—Margaret Blincoe,  
Louise Mansfield

# MASQUE *and* WIG

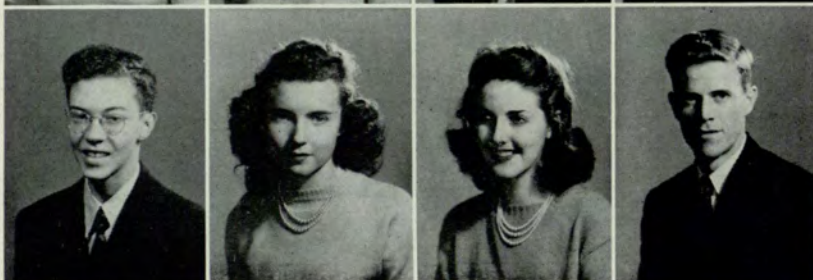
The Masque and Wig, Dramatic Club of the Junior College has as its purpose the discovering and development of dramatic talent in Junior College students. This year under the able direction of Miss Poss, the enthusiastic club members presented "Nine Girls" and "Little Women" in addition to several one-act plays for school assemblies.





# Wesleyan Foundation Union

The Wesleyan Foundation Union, composed of the Methodists on the campus, was organized to provide for the spiritual, moral, and social needs of the Junior College students.



*First Row:* Irma Hathcock, President; Barbara Brewton, Vice-President; Dorothy Mock, Secretary

*Second Row:* Mary Grace Pitts, Treasurer; Elizabeth Blair, Ann Burns

*Third Row:* Mary Frances Clarke, Billie Larmore, Jean Luttrell

*Fourth Row:* Betty McCord, Jack McLean, Frances McWhirter, Katherine Moore

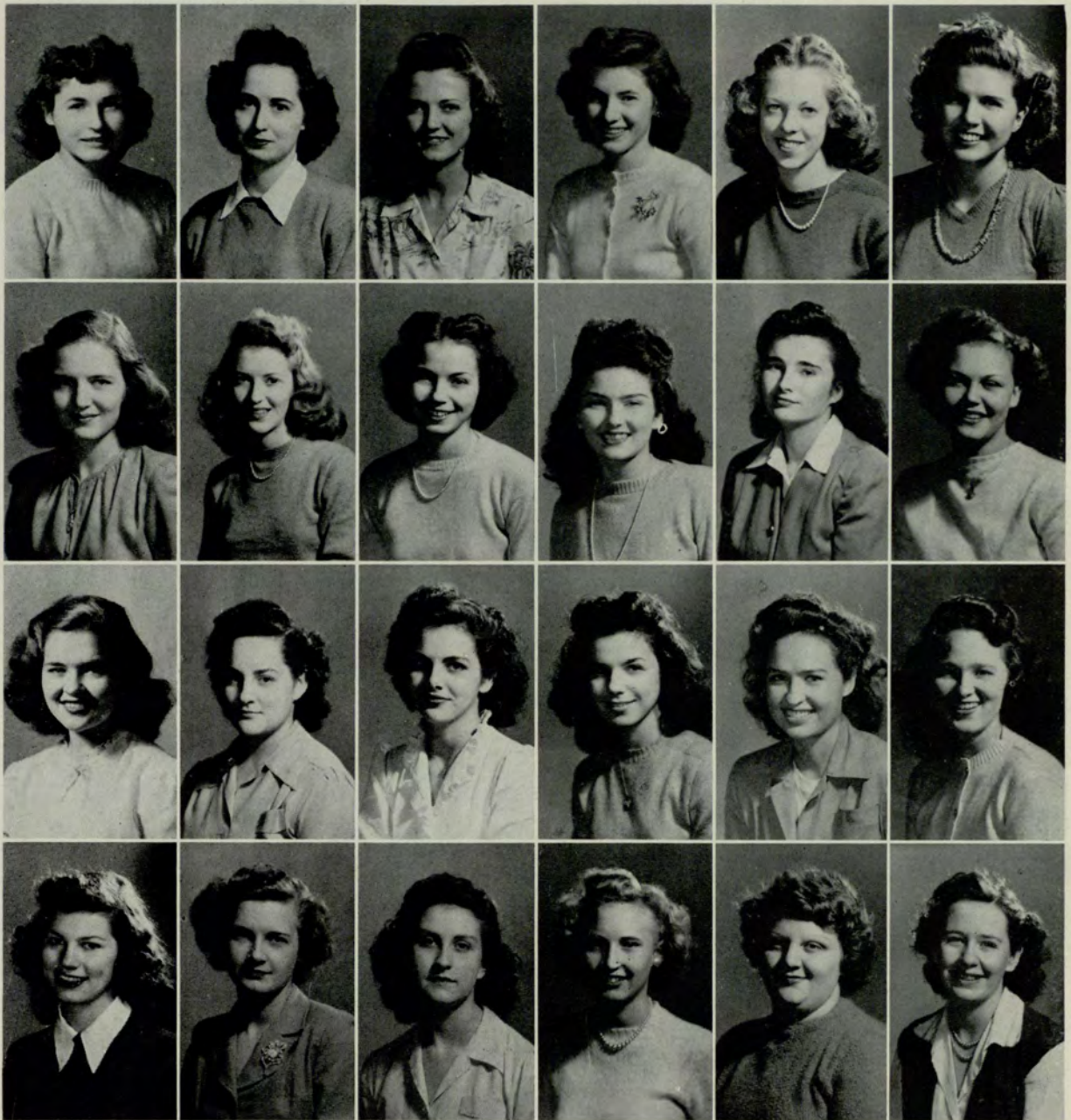
*Fifth Row:* Martha Morgan, Elsa O'Callaghan, Charlotte Oslin, Mary Pindar

*Sixth Row:* Hershel Pless, Joyce Sellers, Louise Smith, Theodore Wilder



# BAPTIST STUDENT UNION

The Baptist Student Union is the connecting link between the church and the school for the student and promotes religious growth and fellowship on the campus.



*First Row:*

- President* . . . . . ZANE AYERS
- First Vice-President* . . . MARTHE SETTLE
- Second Vice-President*  
CATHERINE WILLIAMSON
- Third Vice-President* . . CLAIRE MAFFETT
- Publicity Chairman* . BETTY JANE GRIFFITH
- Secretary* . . . . . PEGGIE BURPITT

*Second Row:*

- Treasurer* . . . . . HILDA HARRIS
- BARBARA ALLEN
- MARGARET ALTMAN
- BETTY BENNETT
- PAT DIVINE
- ROSE FAULKNER
- Third Row:*
- RUTH GILLESPIE
- ANNETTE HENRY

- MARY JO HILLS
- JACKIE HOLLEY
- GWEN JOHNSON
- VIRGINIA JONES

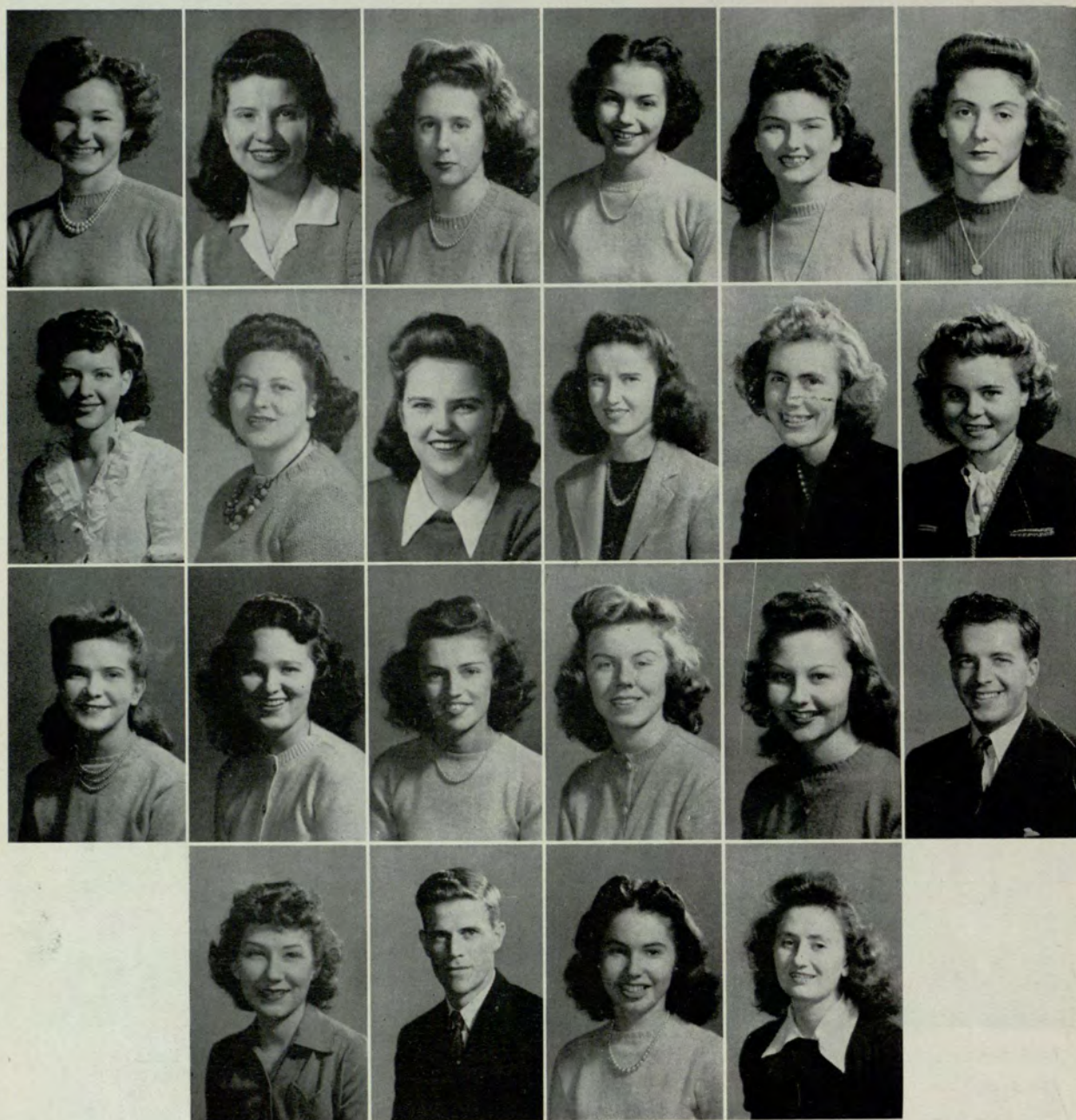
*Fourth Row:*

- SHIRLEY LAWSON
- VIRGINIA LITTLE
- MARGARET MALONE
- BARBARA PLAATJI
- CAROLYN REID
- MARIE ROGERS



# International Relations Club

The International Relations Club is a group of students meeting twice a month to discuss international relations. This group is sponsored by the Carnegie Endowment on condition that the members study and discuss world affairs from an unprejudiced and objective point of view.



*First Row:*  
 COLEY KELLAM—*President*  
 BARBARA SIKES—*Secretary-Treasurer*  
 ISABELLE WILLIAMSON—*Publicity Chairman*  
 MARGARET ALTMAN  
 BETTY BENNETT  
 RUTH BILES

*Second Row:*  
 ELIZABETH BLAIR  
 FRANCES CARSON  
 HELEN COX  
 VIRGINIA COX  
 JUNE CROCKER  
 ETHEL DAVIS

*Third Row:*  
 DOT DONALDSON  
 VIRGINIA JONES  
 JOYCE HOLSENBECK  
 SARAH KENT  
 LOUISE LOCKHART  
 ROGER LORRAIN

*Fourth Row:*  
 CHRISTINE PARKER  
 THEODORE WILDER  
 KAY WOODMAN  
 DARLENE YARBROUGH



# SUPERLATIVES

The GATEWAY takes pride in presenting the 1944-45 superlatives elected by the student body in assembly.

*Mr. Junior College*  
BOB ALDEN

*Miss Junior College*  
NORMA JANE RADER



*Most Outstanding Freshman Boy*  
ELBERT WOODS

*Most Outstanding Freshman Girl*  
SARAH KENT





# SUPERLATIVES



*Most Handsome Boy*

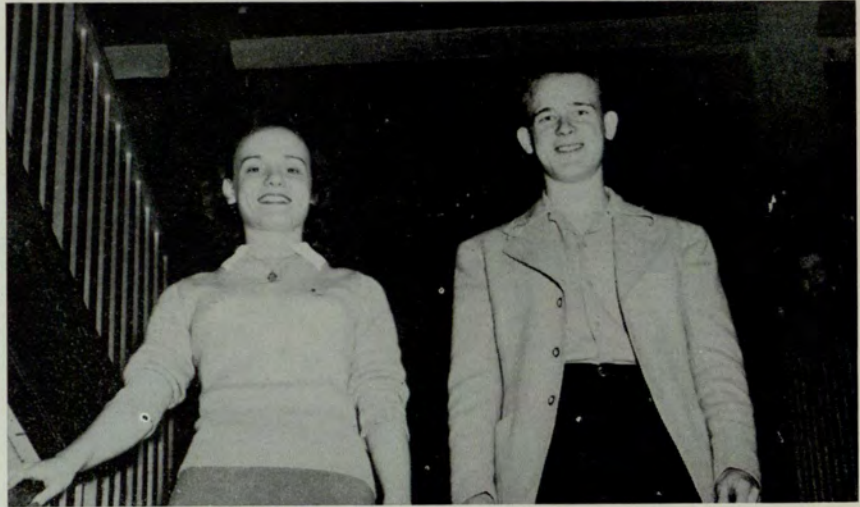
BOB WATSON

*Most Attractive Girl*

ZANE AYERS

*Most Dependable Girl*  
ELSA O'CALLAGHAN

*Most Dependable Boy*  
BOB ALDEN



*Most Athletic Girl*  
CATHERINE WILLIAMSON

*Most Athletic Boy*  
CHARLES McDERMON





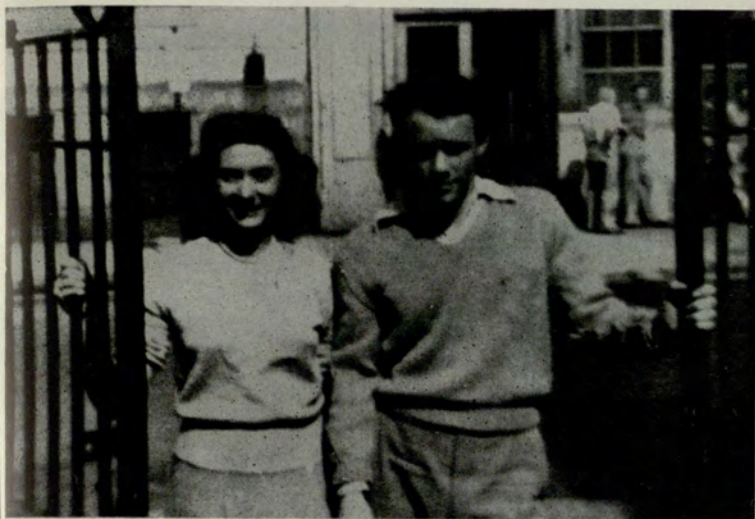
# SUPERLATIVES



*Most Versatile Boy*  
JOE WOODS



*Most Versatile Girl*  
ISABELLE WILLIAMSON



*Friendliest Girl* RUTH BILES  
*Friendliest Boy* CHUCK McDERMON



*Most Representative Cadet Nurse*  
GRACE BRANNON



# GATEWAY STAFF



COLEY KELLAM  
*Business Manager*



ELSA O'CALLAGHAN  
*Editor*



ELLINOR WHITEFORD  
*Assistant Editor*



RUTH BILES  
*Picture Editor*



LOUISE LOCKHART  
*Assistant Picture Editor*

1945



# GATEWAY *Staff*

The aim and purpose of the Annual of the Junior College, THE GATEWAY, is to preserve for the student memories of his school activities. Every member of the faculty, student body, and every school organization is represented in this publication which is compiled by a representative group of the student body.

## LITERARY STAFF



ROSE FAULKNER

JUNE JOAN CROCKER

CAROLYN REID

MARY SHANNON

TOMMY VAN HOUTEN



DOROTHY BELL

## FINANCIAL STAFF



ISABELLE WILLIAMSON



MAJOR W. P. LAYTON



# PROPHCY

While glancing through the pages of the newspaper for today, June 1, 1955, I notice on the front page that Robert M. Alden is running for Sanitary Commissioner in Cornelia, Ga., and in his campaign he is advocating "Germ-Free Lollipops" for children. Across the page is the story telling that Coley Kellam has just been sentenced to life-imprisonment for murder. I see that Isabelle Williamson is running for President on the Socialist ticket—must be a hold-over from her "Nine Girls" days.

In the entertainment section I see an advertisement about the opening of the "Hot and Lowdown Night Club" whose floor-show stars Margaret Altman West as singer, with Zane Ayers and Evelyn Bailey as strip-tease artists. The orchestra will include that talented trio, June Van Sickle, Margaret Wehling, and Barbara Yarn. June will play bass fiddle, Margaret will swing out on the tuba, and Barbara will beat it out on the snare drums. I have heard that Ann Burns will be there as cigarette girl.

The great Hocus Pocus Circus will be in town next week with Olson and Oslin as the Girls on the Flying Trapeze. Virginia Cox and Nan Davenport can be heard long and loud as hawkers.

Listed on the radio page we find that Thomas "Happy" Cagle is cheering up early morning audiences with the Sunshine Hour. Pat Divine is becoming famous as the voice behind the Erpy Slerpy Baby Food commercials.

On the sports page is a picture of Anne Foster attired in her tights as a lady-wrestler after her victorious battle with Tugging Tessie the Terrible Tyrant. There is a note that Charles "Muscles" McDermon is giving up the fight ring at the insistence of his wife. Poor Chuck is just a henpecked husband. In a story by-lined by Faye Mabry I learn that Darlene Yarbrough is teaching calisthenics at a school for boys and that Ruth Biles is instructing the residents at the Old Ladies' Home in how to keep their figures trim.

"Bowery Honky-Tonky Raided by the Police" is the headline on the story which mentions that the employees of the ill-fated joint were Elizabeth Blair, pianist, and Bob and Ellinor Whiteford, a brother and sister song and dance team. Dot Bell was waiting on tables when the law arrived.

She did it at last—meaning Jo Ann Lewis. The society page displays a write-up of the marriage of Miss Jo Ann Lewis to Van Johnson, former screen idol and now night watchman at the MGM studio. In an announcement by the Eta Beta Pie fraternity I find that Frances Turner is now the housemother for this outstanding organization. Another marriage

notice is that of Martha Griggs. I believe this is her fifth time. Snazzy Snoopins gossip column tells that Irma Hathcock is getting a reputation as being fresh by winking at sailors.

The Education section reveals that Joyce Holsenbeck is now teaching History at the Junior College, and that Jane Jones is teaching ABC's to kiddies at the Sunny Side kindergarten. Miss Catherine Williamson's School for Wayward Girls has a picture of the graduating class. Mary Elizabeth Neely is a bowling instructor at the "You Knock 'Em Down We Pick 'Em Up" bowling alley. For tips on grammar, contact Doris Sheel. She's teaching English at the one-room school house in Ipswitch Hollow.

The second news section shows that Betty Jane Powers and Mary Catherine Pindar have just won a contest for being the best log-rollers in the northwest. There is a small item at the bottom of the page which states that Marian Hine is now president of the WCTU. Mary Cahill is serving as a Nurses Aid at the State Reformatory.

From the movie ads I learn that the coming attractions are "Tinkling Tootsies" starring that remarkable dancer, Roger Lorrain and the "Murderous Monster" with Jack McLean in the title role and with Jean Luttrell as his leading lady. Frances McWhirter is now being advertised as the "Second Garbo".

In the advertisements throughout the paper I find that Frances Chambers is modeling bathing suits in the Sears-Roebuck ad. The "Knitty-Knatty-Knutty Shop" operated by Barbara Ann Collier and Dot Donaldson is advertising fine knitted articles. The blond beauties in the "This Can Happen to You" peroxide ad are Mary Garner, Norma Jane Rader, and June Ann Rader. Barbara Sikes and Helen Cox would like the world to know that they are the best seamstresses for making those RIP—Rip In Pieces—shrouds. Under the picture of Kay Woodman's beaming face I find that she is demonstrating shoe cleaner in a ten cent store. Martha Morgan is advertising her liquor store as the one with the most spirited spirits. The ad put in by the Claire Moffett Flying School invites each and everyone to learn to fly the easy way—by going up alone.

The Want-ads show that Lucille Shippen would like to become companion to some old lady. Frances Franklin needs a good electric range for use in her boarding house for coal miners.

Looking through a copy of this year's Gateway I see that the book is dedicated to Elsa O'Callaghan, the school's hostess.

By Helen Cox and Barbara Sikes.



*"Oh, Darling,  
It's Lovely!"*



Bridal pair — platinum, complete \$210.00.



Beautiful but modestly priced, yellow or white gold, complete \$125.00



Platinum — 11-diamond engagement ring, plain band, \$175.00.



In yellow gold only, diamond solitaire and five-diamond wedding band, complete \$75.00.

# MYRON € FREEMAN & BRO.

103 PEACHTREE STREET

"WATCH AND DIAMOND MERCHANTS"

WALTER R. THOMAS, President

ATLANTA

ROME

*In peace and in war  
Freeman diamonds  
are the traditional  
symbol of love.*



*With firm  
faith in the  
future—  
Unshaken, staunch  
and true;  
They pledge their  
troth together,  
For love and coun-  
try, too.*

*His hand will be  
the stronger  
for her confiding  
touch;  
her heart will be the  
lighter  
for love that means  
so much.*

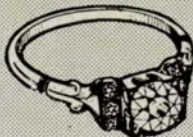
Federal Tax  
Included



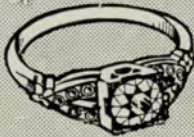
Yellow gold, diamond studded bridal ensemble \$25.00.



Platinum set with 16 Freeman quality diamonds \$300.00.



Exclusive Freeman creation, platinum \$500.00.



See this ring in our windows, in yellow or white gold, \$175.00.



This pair a triumph of our designers, platinum \$450.00.

*"The  
Largest  
Diamond  
House  
South"*



Every Freeman diamond, regardless of price, is individually selected by our diamond buyers who are nationally known authorities. Buy your diamond from a store who for over 50 years has maintained the highest standards of merchandising. Convenient terms can be easily arranged.



BOARD OF REGENTS

# UNIVERSITY SYSTEM CENTER

HAS ENLARGED ATLANTA'S EDUCATION FACILITIES

FOR ATLANTA GRADUATES

•

YOU MAY ENTER THE JUNIOR COLLEGE FOR DAY CLASSES

OR THE

EVENING COLLEGE FOR CLASSES AFTER BUSINESS HOURS

•

# UNIVERSITY SYSTEM OF GEORGIA

162 Luckie Street, N. W.

ATLANTA

GEORGIA



# BOOKSTORE

ATLANTA JUNIOR COLLEGE

TEXT BOOKS

COLLEGE OUTLINES

STICKERS

SUPPLIES

Place your orders here for "Best Sellers" or any other book in print.

For Your  
PLEASURE AND CONVENIENCE

We Sell

ICE COLD COCA-COLA	
CLOVER DALE DAIRY, INC.	GORDON'S POTATO CHIPS
DR. PEPPER	"7" UP
JONES' PURE FRUIT JUICE	KRISPY KREME DOUGHNUTS
CRISWELL'S PIES AND CAKES	HILL'S SANDWICHES
CANADA DRY GINGER ALE	OLDS' ICE CREAM
CANDY DISTRIBUTING CO.	DORTCH'S CAKES

"THE REFECTORY"

*We recommend these products to our students*



*For Fine Photographs*

CALL MAIN 6438 FOR APPOINTMENT

## DUNN STUDIOS

*(Photographers for Gateway)*

120 SPRING STREET, N. W.

---

You may still order photos  
from your annual negatives.

B O W L . . .

The Right Way  
at

## BLICK'S

4 CONVENIENT CENTERS

BOWLING PALACE  
Briarcliff Plaza

LUCKY STRIKE  
671 Peachtree Street

BUCKHEAD BOWLING CENTER  
3145 Peachtree Rd.

BOWLING CENTER  
Blick Building  
111 Ivy Street, N. E.

*The Best in Bowling Equipment*  
Now the favorite sport of Atlantans  
. . . bowl regularly for competition  
fun and health.

*In Business Since 1884*

---

Building Material . . . Lumber . . .  
Millwork . . . Electrical Fixtures . . .  
Hardware . . . Paint . . . Ready-  
Mixed Concrete . . . Furnaces and  
Heating Equipment

---

## CAMPBELL COAL CO.

For Action Call JAcKson 5000

*The Best is none too good  
for our customers.*

## MARCUS'

*"Men's Wear Specialists"*

62 Peachtree St.  
Thru to Broad St.





**“It’s  
right on  
the  
beam”**

“Hi. Recognize me? I’m one of your crowd. You see, I speak for Coca-Cola, and its abbreviation, ‘Coke.’ I speak for both. They mean the same thing. The gang say I look just like ‘Coke’ tastes. And you won’t get that delicious and refreshing taste this side of Coca-Cola. There’s no comparison.”

Drink  
**Coca-Cola**  
TRADE-MARK  
Delicious and  
Refreshing  
**5¢**

BOTTLED UNDER AUTHORITY OF THE COCA-COLA COMPANY BY

**THE ATLANTA COCA-COLA BOTTLING CO.**



J. L. BELL, *Manager*

HIGHLAND LUMBER CO.

WA 6614      614 Highland Ave., N. E.

Building Material of All Kinds

**MINOR STUDIO**

PORTRAIT  
PHOTOGRAPHERS

Rush Orders a Specialty

WEDDINGS  
HOME PORTRAITS

COMMERCIAL

PASSPORTS

CIVIL SERVICE

Call WA. 3351

Nights & Sunday AM herst 1252

38½ WHITEHALL ST., S. W.



*Cox, Grace and Sikes . . . the belles of the bookstore, try their hands at a new trade.*

*Compliments of*

LOVABLE  
BRASSIERE  
CO.

NORA SMITH SHOP

122 Peachtree Street

DRESSES — SPORTSWEAR

SMART ACCESSORIES

*Compliments of*

ATLANTIC ICE & COAL COMPANY

Ice — Coal — Cold Storage

MA. 1900



# HARPER'S

## *Colonial Flower Shop*

1094 PEACHTREE ST., N. E.

HEMLOCK 1181

Courtesy is Never Rationed

at

## *Holzman's*

MISS CHRISTINE WING, FORMER  
EVENING COLLEGE GRADUATE,  
WILL BE GLAD TO WELCOME YOU  
AND HELP YOU WITH YOUR  
SELECTIONS . . .

The Gift Headquarters of  
Atlanta and the South

## *Holzman's*

One of America's *FINER* Jewelers

# JOHN D. HOFFMAN

*Teacher of Singing*

Five Recording and Practice Studios  
for Students, Without Extra Charge

2½ Auburn Ave. (Corner Peachtree)

JACKSON 0674

*Compliments of a*

## FRIEND

FLORSHEIM SHOES—ARROW SHIRTS

## WALTER A. GUEST

Phone WA. 0523 237 Mitchell St., S.W.

ATLANTA, GA.



# 50 YEARS OF SERVICE TO ATLANTA

THIS was a small town when Gold Shield first began handling the laundry and the dry cleaning of Atlanta folks. We must have done a good job — and kept on doing it — because, like Atlanta, we have grown pretty big. Nine modern and well-equipped plants are ready to serve you. Call the nearest of them for full details for service that is better, but costs no more.

- |                      |               |
|----------------------|---------------|
| AMERICAN LAUNDRY     | MA in 1016    |
| CAPITAL CITY LAUNDRY | VErnon 4711   |
| DECATUR LAUNDRY      | DEarborn 1606 |
| EXCELSIOR LAUNDRY    | WAInut 2454   |
| GUTHMAN LAUNDRY      | WAInut 8661   |
| MAY'S LAUNDRY        | HEmlock 5300  |
| PIEDMONT LAUNDRY     | WAInut 7651   |
| TRIO LAUNDRY         | VErnon 4721   |
| TROY LAUNDRY         | HEmlock 2766  |

... Ask Your  
Route Salesman

## Gold Shield Laundries





**J. P. STEVENS**  
**Engraving Company**

ESTABLISHED 1874



Wedding, Reception, Visiting Cards  
Monogrammed Stationery



*Artistic Creations With  
Fine Material*



110 Peachtree Street  
ATLANTA

**GENERAL SPECIALTY  
COMPANY**

*Manufacturers and Distributors*

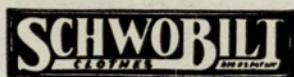
BANNERS, BADGES  
CELLULOID BUTTONS, FLAGS  
FELT NOVELTIES, ETC.

Walnut 5127 — 72 Broad St., N. W.

IDA LEE KIRK                      ATLANTA, GA.



THE  
BEST DRESSED MEN  
WEAR . . . . .



"SCHWOBI LT SUITS THE SOUTH"

ALBANY                      COLUMBUS  
LA GRANGE                SAVANNAH  
ATLANTA                    MACON



SPORTING GOODS

HEADQUARTERS

IN

ATLANTA

**WALCO SPORTING  
GOODS CO.**

Pryor St. at Auburn Ave.



"MEET YOUR FRIENDS"  
AT  
**STANDARD DRUG CO.**  
*"Up the Street from the College"*  
YOU ARE ALWAYS WELCOME

Compliments of  
**DAVIS BROTHERS**  
**RESTAURANT**

RIDE OUR BUSES  
MONDAY THRU THURSDAY  
AND SAVE  
THE WEEK-ENDS  
FOR  
OUR BOYS IN THE SERVICE

—there is a motor bus ready to take  
you there . . . with comfort  
and economy

For information, call WALnut 6300

**GREYHOUND**  
BUS DEPOT of Atlanta

**RIALTO THEATRE**

COR. FORSYTH AND LUCKIE STS.  
ATLANTA, GEORGIA

*The Theatre That Shows the Better  
Pictures First*

*You Always See A Good Picture  
At the Rialto*

Bus. Phone VE. 3595

**FRED C. BLAIR**  
FLORIST

—  
"INDIVIDUALITY IN FLOWERS"  
—

1580 Piedmont Road, N. E.  
ATLANTA





Two coming right up from Luckie Street's Hamburger Heaven.

Compliments of

**ZIMMERMAN'S**

108 Peachtree St.

PHONOGRAPH RECORDS

**BAME'S INC.**

60 Broad St., N. W.  
WA. 5776

RADIO SERVICE

*Superior*

**PRINTING  
COMPANY**

MILLINERY ACCESSORIES BAGS

**NEAL'S MILLINERY**

171 Peachtree Street  
Atlanta, Ga.

**UNIVERSITY GRILL**

ACROSS THE STREET FROM  
SCHOOL

*Courteous Service At All Times*

**J. F. Thompson Engraving Co.**

WEDDING INVITATIONS  
CALLING CARDS, STATIONERY  
SPECIAL TO GRADUATES

226 Peachtree St. Phone JA. 1646

**MRS. HILL'S SANDWICHES**

*Fresh, Delicious, Satisfying*

Sold in the Refectory

Compliments of



Willie, Walt and Mr. Bryant, the big three of the Junior College pose for the camera.





*Cold-blooded Kellam makes a killing at Rader's expense.*



*McDermon the Great and crew.*

# DUGGAN OPTICAL COMPANY

OPTOMETRISTS AND OPTICIANS

221 MITCHELL STREET, S. W.

PHONE WA. 9985

ATLANTA, GA.







GEORGIA STATE UNIVERSITY



3 0785 00576 4675



