

LD 1965
.N63
1935

55
S
A
F
E
R
E
C
O
N
S
I
S
T
E
R
S

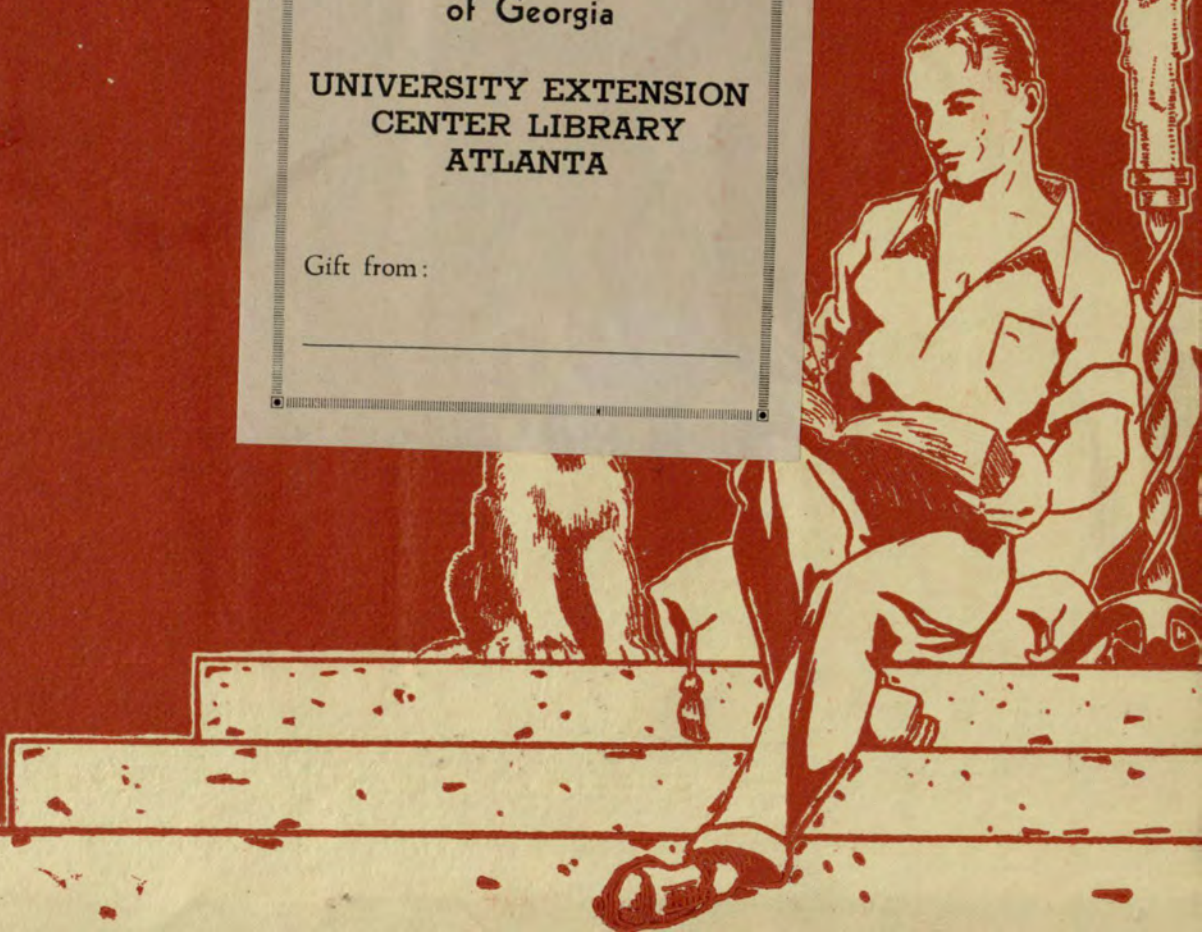




University System
of Georgia

UNIVERSITY EXTENSION
CENTER LIBRARY
ATLANTA

Gift from:



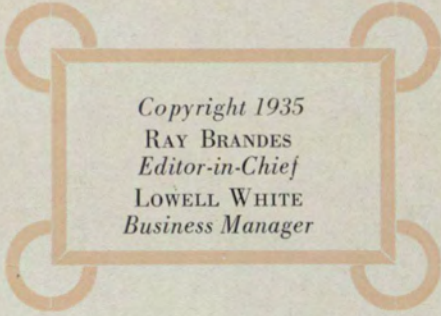
EX LIBRIS





The
NOCTURNE

1935



Copyright 1935
RAY BRANDES
Editor-in-Chief
LOWELL WHITE
Business Manager

R 378.73
~~Nocturne~~
1935

~~LD 1961
G85 .N6
1935~~

LD 1965
.N63
1935



The 1935 Nocturne

Volume Two

Yearbook of

The Evening School

of the

UNIVERSITY SYSTEM OF GEORGIA

Atlanta, Ga.

LIBRARY
UNIVERSITY EXTENSION
ATLANTA, GA.

3627

D E D I C A T I O N

To Doctor George McIntosh Sparks,
director of the Evening School, whose
friendly counsel and advice, whose
understanding sympathy, and whose
loyalty and love for the Evening
School have endeared him to the hearts
of all Evening School students, we
dedicate this, the second volume
of THE NOCTURNE.

LIBRARY
UNIVERSITY EXTENSION
TRUST - 1911



DR. GEORGE McINTOSH SPARKS

F O R E W O R D

In medieval days there was developed, among those who had to work in order to live, a system known as that of apprenticeship. A young person, coming to that age at which he was able to assume a certain amount of responsibility, and feeling the need of preparation for his life work, became apprenticed to some master workman for a definite length of time. During this time he daily worked at the trade he had chosen and was instructed in the intricacies of the art by the master.

We, who are students of the University System of Georgia Evening School, wisely profiting by the system of apprenticeship developed so many years ago, have gone a step further and have found a basis for the development of well-rounded personalities by adding recreation to our combination of working and learning.

Our Nocturne for 1935 has as its ideal the presentation of each of these stages of our apprenticeship. If, upon reviewing these pages in years to come, we again catch the spirit that has motivated our school life here, our efforts in attaining this ideal have not been in vain.



C O N T E N T S

C O L L E G E

C L A S S E S

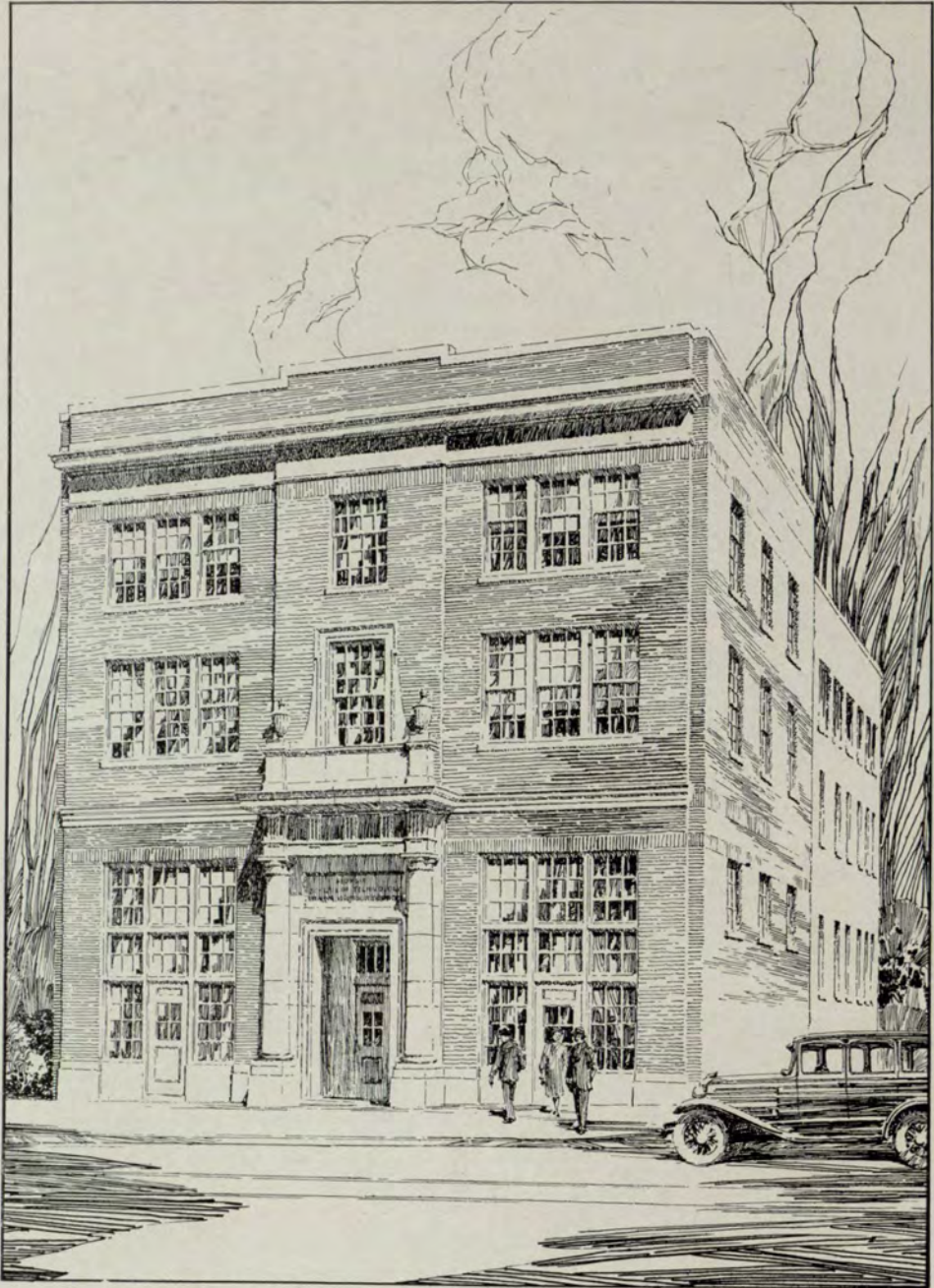
A C T I V I T I E S

F E A T U R E S

A D V E R T I S E M E N T S



C O L L E G E



UNIVERSITY SYSTEM OF GEORGIA EVENING SCHOOL



Dr. Snelling

Dr. Sparks

Mr. McClellan

Administration

CHARLES MERCER SNELLING, A.M., Sc.D.
"Chancellor Emeritus"
University System of Georgia

GEORGE MCINTOSH SPARKS, A.B., M.A., LL.D.
"Director"
University System of Georgia Evening Schools

THEODORE M. MCCLELLAN, B.S., M.S.
"Secretary and Registrar"
University System of Georgia Evening School

The Nocturne '35



LOUIS T. BATES, A.B.
A.B. Emory University
Professor of English

NELL CHILDS BOOTH, A.B., B.D.A.
A.B. Brenau College and LaGrange College
B.D.A. Bush Conservatory
Professor of Dramatic Art



HARLEE BRANCH, JR., A.B., LL.B.
A.B. Davidson College
LL.B. Emory University
Professor of Public Speaking

The Nocturne '35

ELMER G. CAMPBELL, A.B., M.S., PH.D.

A.B. Hiram Ohio College
M.S. Purdue University
Ph.D. University of Chicago

Professor of Botany, Genetics



LLOYD W. CHAPIN, A.B., M.A.

A.B. Emory University
M.A. Harvard University

Professor of English

W. C. CANTRELL, A.B., M.A., LL.B.

A.B. University of Wyoming
M.A. Columbia University
LL.B. Atlanta Law School

Professor of Law and Government

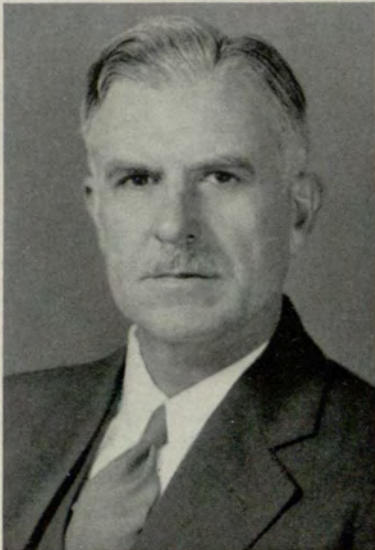


The Nocturne '35



WALTER G. COOPER, JR., A.B., LL.B.
A.B. University of Georgia
LL.B. Emory University
Professor of Law

D. MITCHELL COX, A.B.
A.B. Emory University
Professor of English



HUBERT E. DENNISON, A.B., LL.B.
A.B. University of Tennessee
LL.B. University of South Carolina
Professor of Law

The Nocturne '35

HORACE B. ELLIOTT, B.S.C., C.P.A.

B.S. Georgia School of Technology

C.P.A. State of Georgia

Professor of Accounting



RALPH O. ELLIOTT, B.S.C.

B.S.C. Georgia School of Technology

Professor of Mathematics



EDWIN H. FOLK, JR., A.B., M.A.

A.B. University of South Carolina

M.A. Princeton University

Professor of History

The Nocturne '35



WILLIAM L. FULGHUM, A.B.
A.B. University of Georgia
Professor of Economics

RALPH A. HEFNER, A.B., M.A., PH.D.
A.B. University of West Virginia
M.A. University of West Virginia
Ph.D. University of Chicago
Professor of Mathematics and Statistics



NEWTON S. HEROD, B.S., M.S., PH.D.
B.S. University of Texas
M.S. University of Texas
Ph.D. University of California
Professor of Physics

The Nocturne '35

THOMAS E. HILL, A.B.
A.B. Davidson College
Professor of Languages



LUTHER R. HOGAN, A.B., M.A., LL.D.
A.B. Mercer University
M.A. University of Chicago
LL.D. Columbia University
Professor of Psychology

REUBEN W. HOLLAND, A.B., M.A.
A.B. Emory University
M.A. Emory University
Professor of Languages



The Nocturne '35



HAL HULSEY, A.B., M.A.
A.B. University of Georgia
M.A. University of Georgia
Professor of Languages



H. REID HUNTER, A.B., M.A.
A.B. Duke University
M.A. Columbia University
Professor of Psychology



CHARLTON D. KEEN, B.S.C.
B.S.C. Georgia School of Technology
Professor of Advertising

The Nocturne '35

V. V. LAVROFF, B.S.C.
B.S.C. Georgia School of Technology
Professor of Mathematics



EMBERT M. LUSINK, B.C.S.
B.S.C. Georgia School of Technology
Graduate Rochester Atheneum Institute,
Student of Edwin S. Siebert
Professor of Commercial Art

GEORGE H. MCKEE, A.B., M.A., Docteur es Lettres
A.B. Washington & Lee University
M.A. University of Pittsburgh
Docteur'es Lettres University of Grenoble, England
Professor of Languages





JAMES E. MAYO, A.B., M.A., C.P.A.

A.B. Mercer University

M.A. Mercer University

C.P.A. State of Georgia

Professor of Accounting

WINSLOW PORTER, M.B.A.

M.B.A. Harvard University

Professor of Finance and Banking



JAMES L. RAILEY, A.B., M.A.

A.B. Baylor University

M.A. Brown University

Professor of Sociology and Economics

The Nocturne '35

JAMES C. SHELOR, B.S.C., LL.B.

B.S.C. University of Georgia

LL.B. Columbia University

Professor of Law



ROBERT E. SHEPPARD, A.B., M.A.

A.B. Vanderbilt University

M.A. Columbia University

Professor of Sociology



LENNORD R. SIEBERT, B.S.C., LL.B.

B.S.C. University of Georgia

LL.B. University of Georgia

Professor of Law

The Nocturne '35



H. O. SMITH, A.B., M.A.
A.B. Harvard University
M.A. Emory University
Professor of English



NELL H. TROTTER, A.B., M.A.
A.B. University of Arkansas
M.A. University of Wisconsin
Professor of Social Ethics

JOE L. STRADLEY
Student Instructor



The Nocturne '35

A. J. WALKER, A.B., M.A., Ph.D.

A.B. Emory University
M.A. Emory University
Ph.D. Harvard University
Professor of English



MARY WALKER
Assistant Registrar

NOAH WARREN, B.S., M.A., C.P.A.

B.S. Georgia School of Technology
M.A. Emory University
C.P.A. State of Georgia
Professor of Accounting



The Nocturne '35

FRED W. AJAX, A.B., M.A.

A.B. Emory University
M.A. Emory University
Professor of English

ROBERT PRESTON BROOKS, A.B., B.A., PH.D.

A.B. University of Georgia
B.A. Oxford University, England
Ph.D. University of Wisconsin
Professor of Economics

JOHN D. HOFFMAN, B.M.

B.M. Atlanta Conservatory of Music
Professor of Music

MADLINE B. HOSMER, A.B.

A.B. University of Missouri
Professor of Public School Art

HELEN RUSK

Student Instructor

DAVID M. SMITH, A.B., M.A., PH.D.

A.B. Vanderbilt University
M.A. University of Chicago
Ph.D. University of Chicago
Professor of Mathematics and Statistics

EMMA WESLEY, B.PH.


B.Ph. Emory University
Professor of Education

HUGH A. WYCOFF, B.S., M.A.

B.S. Missouri Wesleyan
M.A. University of Chicago
Professor of Biology



C L A S S E S



Graduate School

The Nocturne '35



MARGARET ACREE, A.B., LL.B.

Α Γ Δ

Atlanta Opportunity School

M.S. Commerce

A.B. University of Georgia

LL.B. Atlanta Law School



WILLIAM PAUL CLARK, JR., B.C.S.

Δ Σ Π

Lane Drug Stores, Inc.

M.S. Commerce

B.C.S. University System of Georgia

Evening School



R. O. ELLIOTT, B.S.C.

Remington-Rand, Inc.

M.S. Commerce

B.S.C. Georgia School of Technology

The Nocturne '35

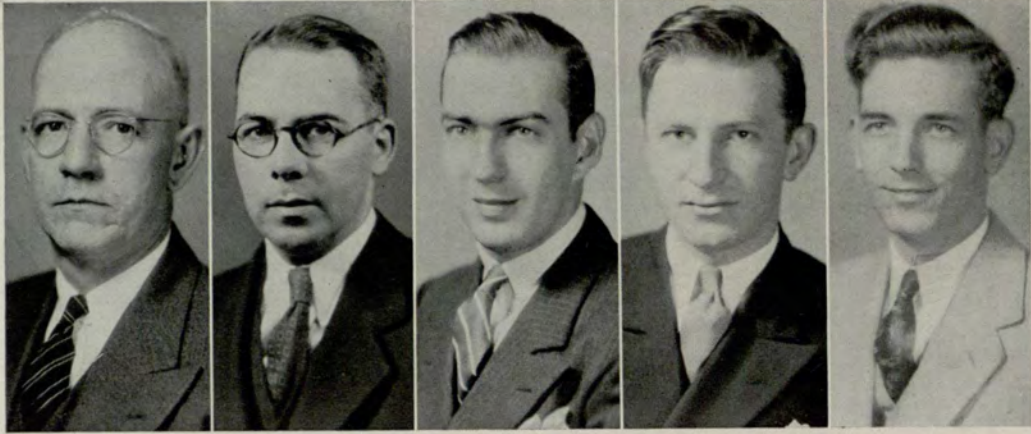
ROBERT DUDLEY HAYES, B.S.C.E.
Georgia State Highway Department
M.S. Commerce
B.S.C.E. Georgia School of Technology



HENRY E. KING, JR., B.C.S.
C. A. Rauschenberg, Inc.
M.S. Commerce
B.C.S. University System of Georgia
Evening School

RUTH ELIZABETH ROGERS, B.C.S.
Δ M Δ
Atlanta Public Schools
M.S. Commerce
B.C.S. University System of Georgia
Evening School





Chalmers

Elliott

Gottesman

Johnson

Lindholm

CHARLES CHALMERS, B.C.S.

Δ Κ Ψ

New York Life Insurance Company
B.C.S. Georgia School of Technology

HORACE B. ELLIOTT, B.C.S.

Western Union Telegraph Company
B.C.S. Georgia School of Technology

WILLIAM GOLDSMITH, B.C.S.

Δ Σ Π

A. H. Turner Agency
B.C.S. Georgia School of Technology

ARTHUR GOTTESMAN, B.A.

Gottesman & Company, Inc.
B.A. Oglethorpe University

M. D. HARPER, JR., B.C.S.

Δ Σ Π

Atlanta Public Schools
B.C.S. Georgia School of Technology

HOWARD B. JOHNSON, B.C.S.

Δ Σ Π

Atlantic Steel Company
B.C.S. Georgia School of Technology

A. CHARLES KEISER, B.S.M.E.

Atlanta Public Schools
B.S.M.E. Georgia School of Technology

ALEX LINDHOLM, B.C.S.

Δ Σ Π

Fulton National Bank
B.C.S. Georgia School of Technology

EMBERT M. LUSINK, B.C.S.

Θ Ξ Ζ

Groves Keen, Inc.
B.C.S. Georgia School of Technology



Seniors

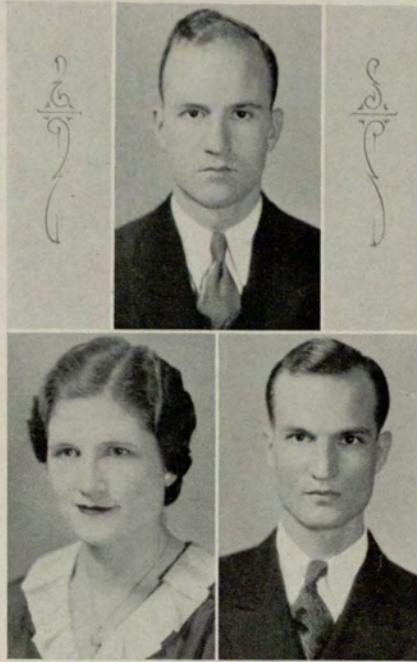


The Nocturne '35



JULIAN PRICE
President of Senior Class

The Nocturne '35



Mulkey R. Strickland M. Strickland

Senior Class Officers

ROBERT H. STRICKLAND
Vice-President

ANTHA NETTIEFAE MULKEY
Secretary

MAURICE A. STRICKLAND
Treasurer

The Nocturne '35



MILTON FRANK ALLEN

Lang & Fritz, Interior Furnishers

B.S. Commerce

Midos Debating Society, '35; President

Midos Debating Society, '35; Inter-Fraternity Council, '35.

RAYMOND LEROY BRANDES

Δ Σ Π

General Electric Company

B.S. Commerce

Delta Sigma Pi, '33-'35; Theta Xi Zeta, '33-'35; Editor *Kappa Life* '34, Delta Sigma Pi; Secretary '34, Treasurer '35, Theta Xi Zeta; Student Council, '34-'35; Editor-in-Chief *Evening Signal*, '34; Feature Editor *Evening Signal*, '35; Editorial Assistant *Nocturne*, '34; Editor-in-Chief *Nocturne*, '35; Inter-Fraternity Council, '35.



The Nocturne '35

BEN PALMER CARTER

Advertising Agent

B.S. Commerce

Kappa Alpha Fraternity, University of
Virginia.



LOY WARWICK CASTLEBERRY

Georgia Power Company

B.S. Commerce

The Nocturne '35



CHRISTAIN H. CLARKE, JR.
United States Army
B.S. Commerce

RUTH VAIL CRAWLEY
War Department United States Government
B.S. Education



The Nocturne '35

REUBEN G. CRIMM
Georgia Public Service Commission
B.S. Commerce



SIMON N. COURIE
Piedmont Cotton Mills
B.S. Commerce

The Nocturne '35



SEYMOUR SLADE DOZIER
Coca-Cola Company
B.S. Commerce

DOROTHY GUY
Δ Δ Σ
Atlanta Public Schools
A.B. Education

Comet Club, '33-'35; Hilarian Club, '35;
Playcrafters, '34-'35; Intra-Mural Key, '35;
Delta Lambda Sigma, '35; Senior Class
Editor *Nocturne*, '35; *Evening Signal*, '34-
'35; Literary Guild, '35.



The Nocturne '35

JOHN T. HANCOCK, JR.
The Clark Thread Company of Georgia
B.S. Commerce
Chi Phi Fraternity Emory
University



GROVER CICERO HARVARD
Δ Σ Π
Sinclair Refining Company
B.S. Commerce
Delta Sigma Pi, '34-'35; *Nocturne* Staff, '34.

The Nocturne '35



MAJOR C. W. HERMAN
Georgia Military Academy
B.S. Commerce

RALPH HILLMAN
Hill Manufacturing Company
B.S. Commerce



The Nocturne '35

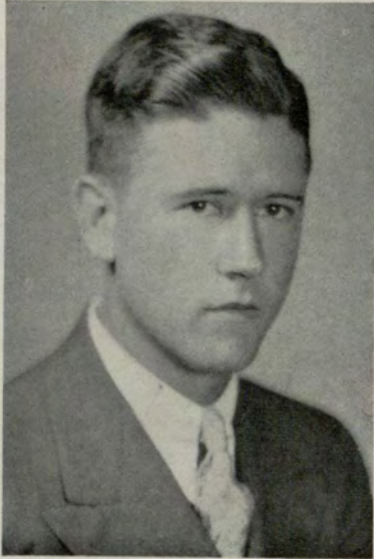
J. R. LUNSFORD
Nunnally & McCrea Company
B.S. Commerce



GEORGE EMANUEL MANNERS
Δ Σ Π
Chevrolet Motor Company
B.S. Commerce

Delta Sigma Pi, '33-'35; Delta Mu Delta, '34-'35; Speakers' Club, '32-'35; Intra-Mural Key, '35; Advertising Manager, '34 *Evening Signal*; Alpha Kappa Psi Medallion, '34; President, '35 Delta Mu Delta; President, '34 Speakers' Club.

The Nocturne '35



JOHN WESLEY MARTIN

Δ Σ Π

C. A. Adair & Company

B.S. Commerce

Delta Sigma Pi, '33-'35; Sigma Chi Fraternity, University of Georgia.

MARY PAULINE MARTIN

Atlanta Public Schools

A.B.

Comet Club, '33-'35; Playcrafters, '35;
Historian, '35 Senior Class.



The Nocturne '35

MARION B. MASON, JR.

Δ Σ Π

George Muse Clothing Company

B.S. Commerce

Venetian Society, '31-'35; Delta Sigma Pi, '31-'35; Speakers Club, '32-'35; Theta Xi Zeta, '34-'35; Secretary - Treasurer, '33 Speakers Club; Treasurer, '34-'35 Delta Sigma Pi; Vice-President, '35 Venetian Society; Vice-President, '35 Theta Xi Zeta; Inter-Fraternity Council, '34-'35.



THOMAS COLON MASON

Δ Σ Π

George Muse Clothing Company

B.S. Commerce

Delta Sigma Pi, '31-'35; Venetian Society, '31-'35; Speakers Club, '32-'35; Theta Xi Zeta, '34-'35; Student Council, '34-'35; Inter-Fraternity Council, '34-'35; Editor-in-Chief *Kappa Life* '34, Master of Ceremonies '34, Senior Warden '35, Delta Sigma Pi; Treasurer '35, Venetian Society; Treasurer '35, Student Council.



CHARLES S. MCKAGEN, JR.

Δ Σ Π

Young Men's Christian Association

B.S. Commerce

Delta Sigma Pi, '28-'35; Theta Xi Zeta, '34-'35; Speakers Club, '34-'35; Playcrafters, '34-'35; Literary Guild, '35; Student Council, '29 and '35; Inter-Fraternity Council, '30 and '35; Intra-Mural Key, '35; Phi Kappa Tau, Georgia Tech; Senior Warden '31, Head Master '32, Delta Sigma Pi, President '35, Intra-Mural Key; Vice-President '34, Junior Class; President '35, Student Body.

LEON L. MOYE

Δ Σ Π

Atlanta Gas Light Company

B.S. Commerce

Delta Sigma Pi, '33-'35; Master of Festivities '33, Delta Sigma Pi.



The Nocturne '35

ANTHA NETTIEFAE MULKEY

Δ Λ Σ

Spalding, MacDougald, Sibley, & Brock

B.S. Commerce

Delta Lambda Sigma, '34-'35; Delta Mu Delta, '34-'35; Comet Club, '31-'35; Playcrafters, '33-'35; Secretary '35, Playcrafters; Senior Class Director '35, Comet Club; Secretary '35, Delta Mu Delta; *Evening Signal* Staff, '35; Secretary Senior Class, '35; Retail Credit Company Scholarship Award, '31; Phi Chi Theta National Key Award, '34.



JOSIAH ELAM NUNNALLY

Nunnally & McCrea Company

B.S. Commerce

The Nocturne '35



JULIAN PRICE

Α Κ Ψ

Southern Spring Bed Company

B.S. Commerce

Alpha Kappa Psi, '32-'35; Venetian Society, '33-'35; Theta Xi Zeta, '33-'35; Secretary '34, Master of Ritual '35, Alpha Kappa Psi; First Vice-President '34, President '35, Venetian Society; President '33, Pre-Junior Class; Student Council Representative '34, Junior Class; President '35, Senior Class; President '34, Vice-President '35, Inter-Fraternity Council; Associate Business Manager '34, *Nocturne*.



SAM SEITZ

B.S. Commerce

Sigma Zeta Fraternity, Georgia School of
Technology

The Nocturne '35

MAURICE A. STRICKLAND

Δ Σ Π

B.S. Commerce

Theta Xi Zeta '35; Playcrafters '34-'35;
Delta Sigma Pi '34-'35; Speakers' Club
'34-'35; Venetian Society '34-'35; *Evening
Signal* '34; Art Editor '35; *Nocturne*; Pub-
licity Director '34, Business Manager '35,
Treasurer '35, Playcrafters; Treasurer '35,
Senior Class.



R. H. STRICKLAND

Retail Credit Company

B.S. Commerce

Intra-Mural Key '35; Associate Editor '35,
Nocturne; Vice-President '35, Senior Class.



RAYMOND A. STYLES

A K Ψ

Chevrolet Motor Company

B.S. Commerce

University of Alabama '30-'32; Alpha Kappa Psi '33-'35; Intra-Mural Key '35; Playcrafters '33-'35; Speakers' Club '33-'35; *Evening Signal* '34; Inter-Fraternity Council '34; Treasurer '33, President '34, Stage Manager '35, Playcrafters; Executive Committee '33, Speakers' Club; Business Manager '34, *Nocturne*.

ROBERT J. TUGGLE
General Elevator Company
B.S. Commerce



The Nocturne '35

LEWIS M. WHITE

Δ Σ Π

American Stove Company

B.S. Commerce

Delta Sigma Pi '34-'35; Theta Xi Zeta '35.



TED WHITEHEAD

The Texas Company

B.S. Commerce

The Nocturne '35



JEROME S. WING

Α K Ψ

Wyatt, Neal & Waggoner

B.S. Commerce

Alpha Kappa Psi '30-'35; Venetian Society '30-'35; Theta Xi Zeta '32-'35; Playcrafters '32-'34; Treasurer '32, Secretary '33, Master of Ritual '34, President '35, Alpha Kappa Psi; Treasurer '32, Venetian Society; Vice-President '34, President '35, Theta Xi Zeta; Vice-President '33, Playcrafters; Inter-Fraternity Council '32-'35; Vice-President Inter-Fraternity Council '35; Student Council '34; Treasurer '33, Pre-Junior Class; President '34, Junior Class.

FOSTER V. YANCEY
Atlanta Gas Light Company
B.S. Commerce



The Nocturne '35

LAMAR G. BAKER

Southern Bell Telephone Company

B.S. Commerce

THOMAS J. OLIVER

Avondale Estates School System

B.S. Commerce

FRED M. DUNAPHANT

National Realty Management Co., Inc.

A.B.

VESTA CATHERINE OSBORN

Avondale Estates School System

B.S. Education

RILLIE STEVENSON DUNAPHANT

Fulton County Relief Administration

B.S. Commerce

CLARENCE AVERILL PAINE

B.S. Commerce

McDOUGALD EVANS

Φ X Θ

Hood Rubber Co., Inc.

B.S. Commerce

GEORGE PITTMAN

Fulton County School System

B.S. Commerce

TOM DAVIES EVE

Fenner & Beane, Brokers

B.S. Commerce

JOHN RANDOLPH RICHARDSON

Δ Σ Π

Campbell Coal Company

B.S. Commerce

DALE J. FRAKES

Ivan-Allen-Marshall Company

B.S. Commerce

EUGENE C. SMITH

B.S. Commerce

JANE SUTHERLAND

Atlanta Public Schools

A.B.

R. HUTCHINS HODGSON

Atlanta Stove Works

A.B.

JEANNETTE OLIVIA TOPHAM

Atlanta Public Schools

B.S. Education

MAUDE PENDARDIS MASON

A.B. Education

Senior Class History

Nineteen Hundred Thirty Five

THE good ship "Class '35" of the Evening School Fleet, with her crew of fifty-two Seniors has just about completed her voyage, and according to the latest dispatches she will land at Port Athens, Georgia, U. S. A., on schedule time—June 10, 1935.

The older generation may remember the bit of legend that has grown up around this sturdy craft "Class '35." In 1927 she started out on her grand cruise into the Sea of Knowledge with not a crew, but with Charlie McKagen alone at the helm. How long Charlie sailed a solitary man upon so doubtful a voyage no one knows. Some say he picked up a crew of sailors who had been left behind by another vessel; some say that he sailed alone for three long years; while others claim that when he reached the Tropics, he left the boat for a season because he could not resist the dates. Be that as it may, in the Spring of 1930, a certain young man's fancy turned, not lightly, to thoughts of learning, and so he plunged into the sea. When he came alongside the "Class '35," he was found to be none other than our persevering and versatile George Manners.

In the Fall of that same year, thirteen first class seamen shipped on and were retained for the remainder of the voyage. They were Lamar Baker, Ray Brandeis (whose maiden name was Brandes), Palmer Carter, J. R. Lunsford, Marion Mason, Tom Mason, Leon Moye, Julian Price, Chicken Richardson, Bob Strickland, Jeanette Topham, Jerry Wing, and Ted Whitehead. In December of that year, Castleberry, most "Loy-al" of them all, was added to the crew, and the old "Class '35" began to be a properly manned vessel.

But the Sea of Knowledge was difficult to navigate: If the crew kept to the shore they ran upon the rocks and shoals; if they got into deep water there was always a squall. The maelstrom of "Credits and Collections" was almost impassible, and it was only by masterly seamanship and a bit of good luck that Marion Mason got by, while at "Statistics" Leon Moye suffered many graphic pangs of anxiety.

Because there still lay ahead of them a number of treacherous courses, the crew felt that they would do well to organize; and because they had unparalleled wisdom, they called themselves Sophomores. About this time Milton Allen came aboard, and while he was debating with Lamar Baker on the subject of Love, two stowaways, Ruth

The Nocturne '35

Vail Crawley and Antha Mulkey, were discovered in the hold. The crew was all at sea when the girls were found, but Charlie McKaken promised to keep a personal surveillance over them, a plan to which the others acceded. The girls proved to be good sailors, however, and both were instated as regular members of the ship's crew. Antha was awarded a year's pay by the Retail Credit Company for her superior seamanship.

The Pre-Junior Year saw yet other "seekers after knowledge" who managed to ship on, among whom were Tom Eve, Ralph Hillman, Raymond Styles, Clarence Herman, and Pauline Martin. Diversion was found in the following deck sports: Dramatics, in which Raymond Styles was the moving spirit; debating; and the varied activities of Fraternities, Sororities, and Clubs. With Julian Price as Skipper, this year was delightful and profitable.


It was during the following summer that the Board of Regents decided that the Evening School Fleet should go under the command of the University of Georgia, and that in the future instead of landing at the beloved port, Georgia Tech, all vessels should land at Port Athens, Ga. This came as a blow to some of the older members of the crew who had been with the ship so long; but, like the truly great who know how to meet disappointments, they displayed a courage that marked them all as superior seamen, loyal to the highest principles.

Then came the Junior Year with these recruits: Dale Frakes, John Hancock, Tom Oliver, Seymour Dozier, Cicero Harvard, Dorothy Guy, Wesley Martin, Mrs. F. R. Mason, Maurice Strickland, and Lewis White. With Jerry Wing as Skipper the crew enjoyed many noteworthy diversions. Ray Brandes, as Editor-in-chief, put out some fine issues of *The Evening Signal*; Raymond Styles was the successful keeper of the ship's first log, "*The Nocturne*"; a memorable day when the debating team went on board a near-by cruiser, "The Brenau," with Milton Allen acting as guardian for one certain young man; the Popularity Contest Dance; the Tea Dance given for the sailors of the "S.S. Class '34," who were just ahead; and Honor Day, when awards were given to the outstanding members of the crew. Antha Mulkey was elected to Delta Mu Delta, and won the Phi Chi Theta key. George Manners was elected to Delta Mu Delta, and won the Alpha Kappa Psi medallion.

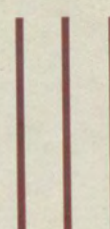
1934-35 marked the last lap of the voyage. The crew elected Julian Price as Skipper and Charlie McKagen was elected Admiral over the entire Evening School Fleet. In spite of the new "B Average" rule, a number of master seamen were added: Simon Courie, James Crawford, Reuben Crimm, Mary Dunaphant, McDougald Evans, Reginald Hodgson, Mrs. Grace Joiner, Joe Nunnally, Becky Orsborn, Clarence Payne, Lura May Manning, George Pittman, Sam Seitz, Ike Shelton, Gene Smith, James Southerland, Bob Tuggle, and Foster Yancey. The all-student banquet in the Fall was the first social event, and marked the debut of the Glee Club, which was to add much to other ship activities. Plans for the "*Nocturne*" were whipped into shape by Ray Brandes; the photographers were on hand "positively for the last time" eleven more times. At the end of the first quarter all the Seniors had made the "B" average, and thus encouraged, they began to order their rings. Perhaps the most spectacular event in the history of the Evening School was the Great Home Coming Banquet held in the Shrine Mosque during the Winter Quarter. Nearly a thousand attended; and the beauty of the setting, the perfect serving of a perfect dinner, the good humor of everybody there, and the dance that followed—all made it a memorable occasion. The rest of the quarter passed rather quietly, for everybody had to buckle down to work in order to maintain the "B" average. Labor was again rewarded and fifty-two seniors could see land ahead!

The Spring Quarter with the early Senior examinations could not be ignored; but when the major part of the work had been completed, there followed such a round of festivities as Seniors dream about. The dinners, the teas, the dances, Honor Day exercises, and the Senior Banquet—all came in such quick succession, and were so thrilling, that the crew was almost dazed. They somehow managed to drop the anchor of the old "Class '35" on time—all hands were called to the quarter deck, lined up fore and aft, and given their honorable discharges.

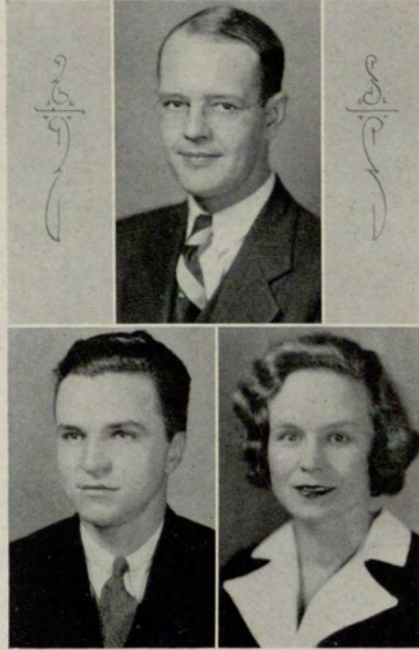
Port Athens was reached; the Grand Cruise was over. The crew held tightly to the degrees in Seamanship as they hurried into Life with memories bringing lumps in their throats as a Future of Prowess and Challenge loomed ahead.

A decorative graphic consisting of three vertical lines of varying heights. The central line is the tallest, flanked by two shorter lines of equal height. These lines are positioned above the word 'Juniors'.

Juniors

A decorative graphic consisting of three vertical lines of equal height, positioned below the word 'Juniors'.

The Nocturne '35



Moss Shuttleworth Isakson

Junior Class Officers

PHILLIP SHUTTLEWORTH
President

KENNETH MOSS
Vice-President

HILDA ISAKSON
Secretary and Treasurer

The Nocturne '35

W. B. BRANON

BARTELL BALDWIN



CULVER CARAWAY

DONALD B. CLEGG



ELIZABETH CURTIS

VIRGINIA DANCE



ELEANOR DAVIS

DEAN DREYER



J. THORNTON FLANIGAN



The Nocturne '35



LLOYD C. GINN
LUCIAN GRAVITT



A. D. GREGORY
MILLARD JENKINS



NORMAN JOHNSON
MARION MAYS



W. C. MIZELLE
TOM NORTH



H. G. PIERCE, JR.

The Nocturne '35

FRANCIS M. OSTEEEN

GORDON OWENS



C. V. RAY

EARL SAVILLE



LOUISE SIMMONS

SUSSIE SUDDETH



CHARLES SWINFORD

LOWELL WHITE



GEORGE WING



Juniors

BALDWIN, BARTELL
BOST, J. B.
BRANON, W. B.

CAMPBELL, GRANT
CARAWAY, CULVER
CHAMBERS, ROBERT MARSHALL
CHRISTOPHER, R. A.
CLEGG, DONALD B.
COX, WILLIS
CRAWFORD, JAMES M.
CREW, MRS. HAZEL LEE
CURTIS, ELIZABETH

DANCE, VIRGINIA
DAVIS, ELEANOR
DAVIS, MILDRED
DRYER, DEAN E.
DUNLAP, JOE VERCLIER

EMBRY, FRIEDA

FAY, HOLMES AMODEN
FLANIGAN, J. THORNTON
FRESHOUR, MRS. RUTH

GINN, LLOYD C.
GRAVITT, LUCIAN
GREGORY, ARNOLD DIKE, JR.
GUNBY, AGNES

HASKINS, FRANCES
HENRY, RUBEN CURTIS
HOWELL, WILLIAM FRANKLIN
HUGHES, JULIA PENELOPE

ISAKSON, HILDA

JENKINS, MILLARD
JOHANN, ROBERT
JOHNSON, MRS. NORMA M.
JOHNSON, WILLIAM S.

KINGSTON, THOS. E.
KNIGHT, FLORENCE E.

LANE, ANNIE

MATHEWS, BERNICE ELIZABETH
MAYS, MARION J.
MIZELLE, WILLIAM C.
MOODY, ROBERT, JR.
MOSELY, J. G.
MOSS, KENNETH J.
MOYE, EMMA CAROLYN
MUNFORD, GEORGE AUBREY

NORTH, THOMAS M.

OSTEEN, FRANCIS M.
OWENS, GORDON WILLCOX

PHILLIPS, JAMES LELAND
PHILLIPS, MRS. SUSIE OWENS
PIERCE, H. G., JR.


RANKIN, ROSELLA HENDERSON
RAY, CLIFTON
RIDDICK, ROSELLA HENDERSON
RIDDICK, CALLIE JEANETTE
RUSK, HELEN BROOKE

SAVILLE, EARL D.
SHARP, BESSIE C.
SHELTON, CHARLES A.
SHUTTLEWORTH, PHIL J.
SIMMONS, LOUISE
STALLINGS, EVELYNE
STEPHENS, MRS. MABEL
STEPHENS, THEODORE
STRADLEY, JOE
SUDDERTH, SUSIE
SUTTON, SARA F.
SWINFORD, CHARLES


TARPLEY, M. ELIZABETH

UPSHAW, LYNTON A.

WEEN, MORRIS
WELLS, GEORGIE ANNE
WHITE, LOWELL M.
WING, GEORGE



Pre-Juniors



LIBRARY
UNIVERSITY EXTENSION
CENTER - ATLANTA



Kennedy
Norman

Trulove
Avera

Pre-Junior Class Officers

LEWIS F. KENNEDY
President

ELMER E. TRULOVE
Vice-President

ANNE NORMAN
Secretary

DOUGALD AVERA
Treasurer

The Nocturne '35

ELWOOD AMOS

GEORGE AMOS



WARREN BAGGETT

MARCIA BAKER



WALTER BENSON

OSCAR CORNELIUS



R. H. CLARK

LOUIS CORRIGAN

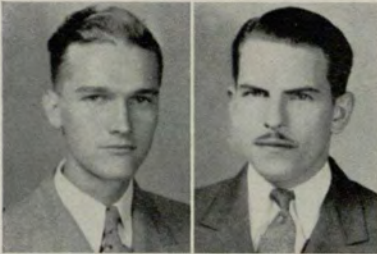


BETTY DE SHONG

DOROTHY FLOYD

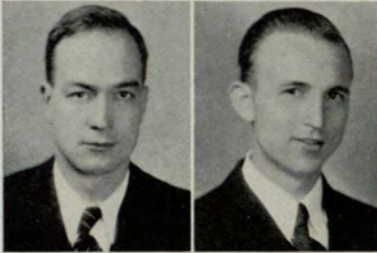


The Nocturne '35



WILLIS HAWKINS

CARL A. HERBIG



JAMES HERREN

EWELL JACKSON



MINTA JACKSON

ELIZABETH JOINER



ROBERT KIMSEY

LENNARD KUYPER



JAMES LACHER

The Nocturne '35

DAVID LANDERS

RALPH McCOY



ESTELLE McKIBBEN

RALPH MOOR



F. L. MOORE

WILSON SPENCE



LYNDA WEBB

DURRIN WHITE



JAMES WITHERSPOON



Pre-Juniors

AMOS, GEORGE LEWIS
AMOS, W. ELMWOOD
ANDERSON, MRS. MARIE COLE
AVERA, DOUGLAND McDONALD
AYERS, WILLIAM MARION

BAGGETT, WARREN CANDLER
BAKER, MARCIA
BARBER, EARNEST J.
BARTON, WALTER FRANKLIN, JR.
BENSON, W. R.
BRADSHAW, HERBERT CARTER
BRANNAN, JACK CARL

CARROLL, MABEL ESTELLE
CATES, WILLIAM E.
CLARK, R. H.
CORNELIUS, O. B.
CORRIGAN, L. W.
COUCH, DURANT

DAVIDSON, JO GRAHAM
DAVIS, TALLULAH
DE SHONG, BETTY
DOBBS, H. TALMAGE, JR.

FLOYD, DOROTHY
FOWLER, JOHN
FRANKLIN, WILLIAM LINCOLN

GABRIEL, T. W.
GADLIN, LOUIS
GILBER, HOWARD H.
GIBSON, J. RALPH
GREENE, MRS. IRMA HOOPER
GUNBY, HAROLD

HAWKINS, TOY WILLIS
HERBIG, CARL A.
HERREN, J. C.
HUDDLESTON, HERBERT C.

JACKSON, EWELL Y.
JACKSON, MINTO P.
JOHNSON, BEN F.

JOHNSTON, JOS. A.
JOINER, ELIZABETH

KENNEDY, LEWIS
KENNEDY, HARTWELL
KIMSEY, ROBERT B.
KNIGHT, ELWIN T.
KUYPER, LENNARD J.

LACHER, JAMES L.
LANDERS, DAVID Y.
LEWIS, EMILE

McCLELLAN, JAMES C.
McCOY, RALPH
McKIBBEN, ESTELLE
MOORE, FRANK L.
MOOR, RALPH C.
MYERS, D. L.

NORMAN, ANNE

OLSSON, MRS. BESSIE D.

PETKAS, JAMES P.
PETTWAY, LUTHER ROY
PORTOR, BRADLEY THOMAS

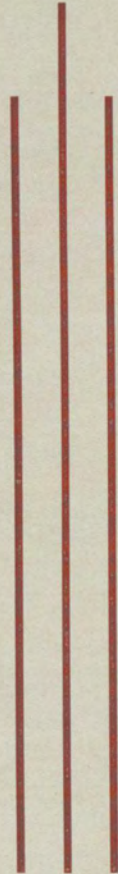
ROBERTS, JAMES REID

SHELTON, WILLIAM E.
SPENCE, WILTON G.

TRULOVE, E. E.
TYRE, NEDRA

VAN HUSS, MRS. MARIE

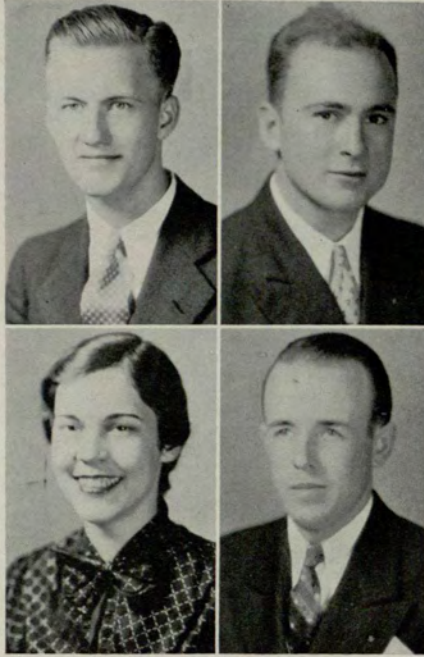
WADDELL, CALVIN D.
WALLACE, JAMES H.
WARD, GUY T., JR.
WARD, WILLIAM A.
WEBB, LYNDA
WHELLER, GRANT
WHITE, DURRIN
WILLINGHAM, FRANK DOTY
WITHERSPOON, JAMES



Sophomores



The Nocturne '35



Brooks
Fitzpatrick

Powell
Hubbard

Sophomore Class Officers

TILDEN BROOKS
President

BILL POWELL
Vice-President

SARAH FITZPATRICK
Secretary

SAM HUBBARD
Treasurer

The Nocturne '35

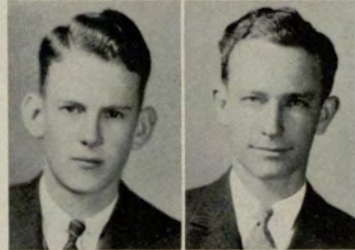
ANGEL ALLEN

BESSIE BEAVERS



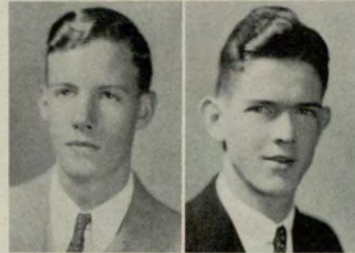
SCOTT BLACKSTOCK

JACK CHAPMAN



ALBERT CLARK

O'CONNELL DOUGHERTY



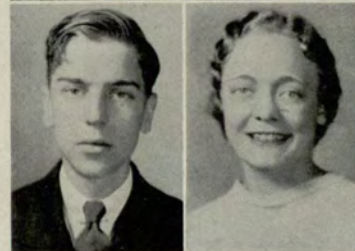
CHARLES DICKSON

KAY DUNCAN



ARCH FITZPATRICK

MILDRED FLURY



The Nocturne '35



MILDRED HANSELL
JAMES HENDERSON



VIRGINIA HIATT
EUGENE HICKMAN



CLARENCE HILL
NANCY HUDSON



WILLIAM JACKSON
JULIA JOHNSON



S. K. JOHNSON
HUGH JORDAN

The Nocturne '35

JOE KALISH

JULIUS LENNARD



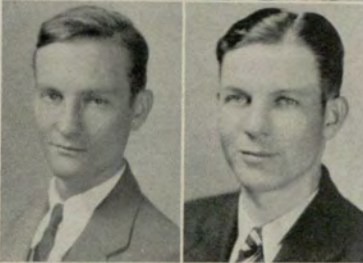
R. C. LOWE

RUTH MCGEE



ED MARTIN

WARD MATTHEWS



DORIS MAYO

W. L. O'CALLAGHAN

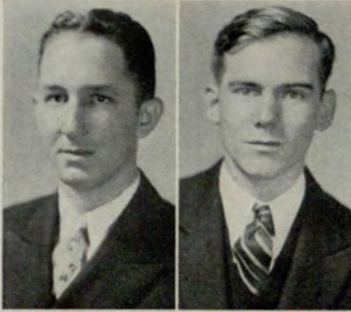


WINNIE PARIS

FRED PHILLIPS



The Nocturne '35



JOHN REID

GARNETT, RHINEHART



TOM SEALS

HELEN TUCKER



NETTIE WEBSTER

HARRY WHITE



CHARLTON WIMBERLY

The Nocturne '35

Sophomores

ALLEN, ALICE ANGEL	FITZPATRICK, SARA ETTA
ALLEN, WILLIAM HEATH	FITZPATRICK, ARCH W.
ARNOVITZ, SAM JACOB	FLURY, MILDRED
BASKIN, W. H.	GARDNER, EMMETT FORREST
BEAVERS, BESSIE RAE	GILNER, ROSE
BEGGS, DOUGLAS WILLIAMS	GORDAN, DAVID HARRIS, JR.
BELL, J. D.	GREGORY, JOHN MARTIN
BLACKSTOCK, WINFIELD SCOTT	HALL, ADELINA M.
BOOTH, SARA P.	HAMMOND, MARY
BOWEN, CLYDE T.	HANEY, MARY JIM
BROOKS, TILDEN LOUIE	HANSELL, MILDRED
CHAPMAN, JACK L.	HARRISON, ELEANOR KATHERINE
CLARK, ALBERT PIERCE	HENDERSON, JAMES ROSS
COLEMAN, LEE	HIATT, VIRGINIA
COLLINS, T. H.	HICKMAN, OLLIE EUGENE, JR.
COOK, R. B.	HILL, C. H.
COOK, SALLIE	HOFFMAN, JOHN LEON
COOPER, MRS. EDNA PAYNE	HOGUE, CAROLYN
COWAN, HIRAM DAVID	HOLDITCH, CHARLES
DAVIS, MARION THOMAS	HOLLEY, ALEEN
DELAY, A. W.	HOPKINS, LEONARD COLUMBUS
DELAY, THURMOND O.	HUBBARD, SAM B.
DE SHONG, IRENE	HUDSON, NANCY
DICKSON, CHARLES BORN	HURT, DOROTHY LOUISE
DOUGHERTY, DANIEL O'CONNELL	JACKSON, EVANDER J.
DOWNING, ALICE S.	JACKSON, MILDRED E.
DUNCAN, MARY KATHLEEN	JACKSON, WILLIAM B.
ELROD, CHARLES ELLISON	JOHNSON, JULIA L.
ENGLAND, ED PRESTON	JOHNSON, SYDNEY K.
FARR, HARRETTE EULALIA	JOINER, DUDLEY D.

The Nocturne '35

JONES, WILLIAM T.

JORDAN, HUGH

JOYNER, JOHN F.

JUSTUS, LUTHER C.

KALISH, JOE N.

KELL, MRS. W. S.

LENNARD, JULIUS M.

LOVELACE, HAZEL

LOWE, ROBERT CHARLES, JR.

MCCLURE, MRS. J. A.

MCGEE, RUTH

MCLAIN, MRS. NAOMI WELLS

MARBUT, CLARENCE H.

MARQUES, ERNESTO DONIELE

MARTIN, CHARLES EDWIN

MARTIN, MRS. ROSELLE

MATTHEWS, W. WARD

MAYO, DORIS ELIZABETH

MEIERE, PAUL LUMPKIN

MONTGOMERY, HAROLD ARCHER

MOODY, THOMAS LEE

MOORE, JOHN WILLIAM

NICHOLSON, JAMES EVERETT

NORMAN, HODGE WILLIAM

O'CALLAGHAN, WILLIAM LAWRENCE

OWENS, SAM REID

PARIS, WINNIE

PATTERSON, ANNE AGNES

PAYNE, NELL

PERRYMAN, WILLIAM M.

PHILLIPS, FRED FOWLER

PITTMAN, MARY LOUISE

PITTS, LILLIAN MAE

POWELL, WILLIAM ALEXANDER

PRICE, LUCILE

QUIGLEY, HOWARD PARMELY

REID, JOHN EDWIN

REINHARDT, GARNETT GLENN

ROBERTSON, A. F.

ROBINSON, AL

ROLLESTON, JAMES A., JR.

ROSE, EVELYN

ROSENBALM, RALPH, JR.

SEALS, THOMAS A.

SELIGMAN, MRS. JULIA

SIMPSON, MRS. LUCILE D.

STARR, FRANCES

STARR, HENRY B.

STEED, C. C.

STREET, JULIUS G., JR.

TROBAUGH, HUGH P.

TUCKER, HELEN

WAVEL, W. J.

WEBSTER, NETTIE

WEEKS, ROBERT WALDEN

WHITE, CORNELIUS


WHITE, HARRY L.

WILKERSON, FRANK CHORN

WILSON, CHARLES EDGAR, JR.

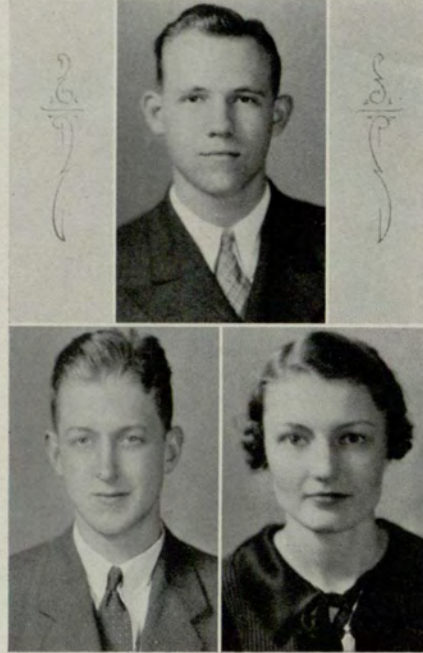
WIMBERLY, HENRY CHARLTON

WOODS, GEORGE NEWTON, JR.



Freshmen

The Nocturne '35



Lee

Cash

Caraway

Freshman Class Officers

WILSON CASH
President

W. A. LEE
Vice-President

MILDRED CARAWAY
Secretary and Treasurer

The Nocturne '35

W. J. ANDERSON
ANNA AVERY



EMORY BELL
MAX BIPS



LUCILE BRADBURY
ROBERT BRANNON



RICHARD H. BRIARD
JAMES BROOCH



GLYNN CAPPS
ALMOND CARROLL



D. M. COURSEY
PAT CEARLEY



The Nocturne '35



FRANCES DAVIDSON

THROBEN ELROD



EMBRY EVE

WILLIAM FIFE



CHARLES FREE

EDITH GREER



ELEANOR HARRISON

ETHEL LEE HARVEY



IRENE HARVEY

FIDLES KLOECKLER



NATALJA MAYO

GERTRUDE MCDOWELL

The Nocturne '35

JAMES MCGUIRE
SHERWOOD MCKAY



CARL PRUETT
GEORGE QUARLES



LOUISE RAINEY
THOMAS REILLY



PAUL ROSENZWEIG
LEWIS RIDEN



HANNAH SCHELL
BILL SCOGGINS



CHARLES SHOCKLEY
LILLIAN SIMPSON



The Nocturne '35



LELAND SMITH

JULIA SWINEY



JEWELL TROUT

ALICE VARLEA



TOMMIE WELLS

R. S. WHIGHAM



ANDREW WURST

CHRISTINE WING



GARNETT WOOD

Freshmen

ADAMS, JOHN QUINCY
AKINS, FLOYD JOHNSON
ALTERMAN, DAVE
ANDERSON, WILLIAM JESSE
ARMSTRONG, J. HAL
ARNOVITZ, MORRIS
AUSTIN, ANNE
AVERY, ANNA
BARNES, HARRY WADE
BARNETT, PAUL GUERRY
BEASLEY, BEN TAYLOR
BEAUDRY, WILLOUGHBY ERNEST
BEAVERS, ELLINGTON MCHENRY
BELL, EMORY BOONE
BELLOWS, LUCY JANE
BENSON, MUIR
BENTLEY, IRMA ADAIR
BIPS, MAX WILLIAM
BRANCH, EDWIN BROUGHTON
BRANON, ROBERT CAMP
BRADBERRY, LUCILLE
BRIARD, RICHARD HAMILTON
BRICE, JAMES HARRY
BRIDGES, THOMAS EUGENE
BROACH, JAMES ALEXANDER
BROWN, JAMES H.
BUCHANAN, WALTER ANDREWS
BURLEIGH, BRUCE D.
BURNS, PAUL BRUNER
CADORA, JAMES LINHART
CALLAWAY, ROY EVERETT
CAMPBELL, HAROLD J.
CANTOR, ESTHER LANE
CAPPS, COMER GLYNN
CARAWAY, MILDRED KATHRYN
CARROLL, ALMAND
CARTER, GLADYS BARTON
CARTER, TOM HARRY
CASH, JOHN WILSON
CEARLEY, PAT
CHANDLER, CLYDE W.
CHAPMAN, RUBY M.
CHRISTIAN, PAUL MARVIN
CLARKE, DAVID MEREDITH
CLEGG, HOMER HARRINGTON
CLONTS, SARA JAYN
COBB, THOMAS ELTON
COFER, JOSEPHINE ANN
COHEN, BERNARD WESLEY
COKER, DARBY TRIMBLE
COLE, JOHN CLIFTON
COLEMAN, KENNETH
CONNELL, HAMILTON WILLIAMSON
CONRAD, OWEN MCINTIRE

COOPER, JAMES MARION
COOPER, MORTON JEP
CORNELIUS, EMILY LOUISE
COURSEY, DANIEL MARSHALL
COX, HELEN JEAN
CRAVEN, VERNE JACKSON
CRAVENS, D. C.
CREECH, WINSTON E.
CURRAN, LOUISE
CURTIS, OLYVE BELLE
DAILEY, ALFRED BERNHARD
DANFORTH, HARRY PORTER
DAVENPORT, JOHN LOUIS
DAVIDSON, RUBY FRANCES
DAVIDSON, WILLIAM MURRAY
DAVIS, JAMES HIXON
DAVIS, MARY RUTH
DEAN, WILLARD ALBERT
DICKSON, ROBERT M.
DODGE, SALLIE WITHERSPOON
DONALD, GEORGE ELLIS
DONEHOOD, FRANCES
DOYAL, RONALD EUGENE
DRISKELL, JACK ROLAND
DURHAM, MARY LOU
EASON, O. DURELL
EDENS, N. LOUISE
ELLISON, HAROLD STRECKFUSS
ELROD, THOBEN FRANK
EVE, EMBRY PITMAN, JR.
EVERITT, CHAS. MELVIN
FARRIS, FRANK FERNANDO
FERRIS, HAROLD AARON, JR.
FESSENDEN, FRANKLIN THOMAS
FIFE, WILLIAM MILLER
FOKES, WILLIAM BURNAM
FREE, CHARLES ROSS
FRITCHMAN, MARY MARGUERITE
FURCHGOTT, MELVIN, JR.
GADDIS, EDWARD CHARLES
GIBSON, CLAIRE
GILBERT, WARREN CANDLER
GILES, JAMES MARVIN, JR.
GILLOOLY, WILLIAM FRANCIS
GLASSMAN, ANNE
GLENN, MARGARET LORENA
GORDON, LOUIS NATHAN
GREER, EDITH VIRGINIA
GRIFFITH, JAMES MARVIN
GRIGGS, MARY ELIZABETH
GRIMES, DOWDY WILHITE
GUNTER, MELVIN HOWARD
HALL, CAROLINE ELIZABETH
HALL, EMOGENE

HARLLEE, WILLIAM JOHNSON	MALPASSE, MARY CRESWELL	SIMPSON, HAROLD L.
HARRIS, JESSIE GINN	MANN, JAMES MORGAN	SIMPSON, LILLIAN
HARRISON, ELEANOR	MAYO, NATALJA	SMITH, DORIS
HARVEY, ETHEL LEE	MITCHELLE, KYLE BEN	SMITH, GEORGE EDWIN
HARVEY, IRENE	MITCHELLE, NEDRA VIRGINIA	SMITH, LELAND W.
HAZELTON, JAMES A.	MORRIS, WILLIAM DAVID	SOCKWELL, ROY W.
HEAD, MARY VIRGINIA	MURPHEY, GEORGE LUTHER	SOLLAR, JAMES J.
HERZBERG, ISABELL	NESBIT, GRACE	SOWER, OTHO G.
HEWES, JAMES MILTON	NEWBERRY, PATTERSON	STEPHENS, MARY E.
HOLDEN, LOWRY S.	NICHOLSON, MARIAN CRAWFORD	STEVENS, ELISE
HOOD, SUE	NOVECK, HAROLD	STILLMAN, LEO, JR.
HOWARD, JOSEPH HUGH	OLIVER, JESSIE RUTH	STONE, JAMES B.
HUBBARD, JOE	OVERBAY, PAUL L.	STOVALL, DAVID L.
HUFFMAN, HILL ROBERT	PALMER, ORDRY	STRICKLAND, IRENE
HULL, MARY LOUISE	PALMER, ROBERT LEWIS	STUDDARD, JIMMIE L.
HUNTER, PERRY G.	PAYNE, GEORGE	SUTHERLAND, C. JANE
JARRARD, R. A.	PHILLIPS, J. LEWIS	SUTTON, ALICE M.
JARRELL, CHAS. S., JR.	POUNDS, EDNA K.	SWINEY, JULIA
JETTERS, SARAH F.	PRUETT, CARL E.	TOMLINSON, ROLLAND A.
JOHNS, KATHARINE R.	PRUITT, GEORGIA BARBARA	TROUTT, JEWELL
JOHNSON, CHAS. B.	QUARLES, GEORGE LITTELL	VARELA, ALICE
JOHNSON, MARY ELIZABETH	RAINES, THOMAS HARRISON	VARNEDOE, THOMAS V.
JOHNSON, RUTH	RAINEY, LOUISE LEILA	VOLBERG, FREDERICK L.
KENDRICK, MARTHA	REILLY, THOMAS LEE	WARLICK, ALICE MAY
KITCHENS, CYRUS M.	RESPESS, MARION GILBERT	WEEKS, KATHLEEN P.
KLOECKLER, MARY F.	RHYNE, JOE S.	WELLS, TOMMIE LANE
KNIGHT, JOHN S.	RIDEN, LEWIS A.	WENN, JOHN
LANE, THOS. L.	RILEY, ELLEN ARLINGTON	WHIGHAM, ROBERT
LEE, ROBERT E.	ROBERTSON, JAMES J.	WHITWORTH, RANSE H.
LEE, WILLIAM A.	RODBELL, LEONARD	WILLIAMS, CHARLIE E., JR.
LEFERRE, NELDA L.	ROSENZWEIG, PAUL	WILLIAMS, JONATHAN EDWARD
LICHLYTER, GUY J.	ROZIER, WILLIAM SIDNEY	WILLIAMSON, MAE
LINDSEY, B. E.	RUDISILL, FANNIE AMANDA	WILSON, RUBY GENEVA
LONG, MARY FRANCES	SANDS, FRANK THOMAS	WING, MARTHA CHRISTINE
LOVETTE, DAVID ALLEN	SASSER, ROY C.	WOLBE, MANUEL
MCCRARY, CHARLES EDWARD	SCHARTLE, RONALD N.	WOOD, GARNETT OTTO
MCDOWELL, MARY GERTRUDE	SHELL, HANNAH M.	WURST, ANDREW
MCGUIRE, JAMES HODGES	SCOGGINS, BILL	YANCY, JOHN ELLIS
MCKAY, SHERWOOD CAMPBELL	SHOCKLEY, CHARLES WILLIAM	ZIPPERMAN, LOUIS A.
MACDONALD, JAMES M.	SHROPSHIRE, NELL	

Special Students

ADERHOLD, RICHARD TASWELL
ALEXANDER, JAMES WILLIAM
ANDERSON, EUGENE ALFRED
ANDERSON, MRS. FLORENCE NIGHTI
ANDREWS, CARLTON L.
ANDREWS, WILLIAM E.
ARDINGER, BERNARD DYER
ARNOLD, GEORGE VESTAL
ARTOPE, RAYMOND LIDDELL
ASKEW, H. H.
ASKEW, JAMES HARDY
ATKINSON, ALONZO MORRIS
AUSTIN, DORRIS WINN
AVRETT, MRS. W. L.

BABIN, RUTH AGNES
BAKER, CHARLES HASELDER
BAKER, FRANCES PATRICK
BARNETT, MRS. OLIVE L.
BARNETT, WALTER E.
BATEMAN, MRS. W. MAE
BATES, MRS. CLARA MAI
BEALL, CHARLES R. F.
BEAN, MRS. KATE RUTH
BECK, WILLIAM FORREST
BELL, LUCY KATE
BELLE ISLE, KATHERINE GERALDINE
BELLOWS, ALLENE
BENSHUSHAN, RAYMOND MAURICE
BERGER, ALEXANDER ALLPORT
BERGER, LEON JACK
BLACK, WILLIAM RIDDICK
BLACKMARR, T. R.
BLACKMON, FLORA FRANCES
BLACKSTOCK, CHARLES WILSON
BLANTON, ORIN WILLARD
BLOODWORTH, NORA
BOONE, MARY ELIZABETH
BOWDEN, HANNA POMELA
BOYD, MRS. O. B.
BRADSHAW, SARAH
BRISTOW, EUGENE BREMOND
BROZDON, GEORGE L.
BROOKS, MARGARET FRANCES
BROWN, PETER CLIFF
BRYAN, CALVIN CONNER
BUCKMAN, DOROTHY D.
BULLARD, TIMOTHY CLIFFORD
BURCH, RICHARD E.

BURKE, JAMES CLAYTON
BURNEY, GEORGE W., JR.
BURT, PAUL
BUTLER, HARRY THOMAS
BYRD, ALLEN M.
CAMPBELL, WILLIAM P.
CARY, JESSIE HENDERSON
CONKLIN, CHARLES
COOK, FRED P.
CRUMP, WILLIAM LEE

DAVIS, DOROTHY
DAVIS, TEMP S.
DEACON, JACK McMULLIN
DICKERSON, DURICE
DICKINSON, JOHN KERMIT
DICKSON, JAMES HILL, JR.
DOBSON, PHILLIP DAVID
DORSETT, IMOGENE
DUNN, ELLA ELIZABETH
DUVALL, BLANCHE KINSEY
DUVALL, WARD BEECHER

EDENS, CHARLES ROGERS
ELLIS, CHARLES
EMBRY, JACK HENDERSON
EVANS, W. TERRY

FARLINGER, ELEANOR LOUISE
FARLOWE, CORA
FIELDMAN, LOUISE MICHELLE
FELLERS, SARA ELIZABETH
FLOWERS, CHARLES EMMITT
FRIZZELL, WALTER RAGEN
FUNDERBURK, DARRELL FUNDY
FUNKHOUSER, MORTON LETTELL
GANTT, LILIA LOUISE
GEICERMAN, HERMAN SOMMER
GIBSON, JOHN LINDLEY
GOLDSTEIN, CECIL
GRAHAM, LUCY EDITH
GERR, SARA MYRTLE
GROGAN, W. H.
GUERRY, CARROLL DEAN, JR.
GUNN, MARY LOUISE
GUTHMAN, SIEGFRIED
GUY, ROBERT JEFFERSON
HALL, MRS. MARIETTA

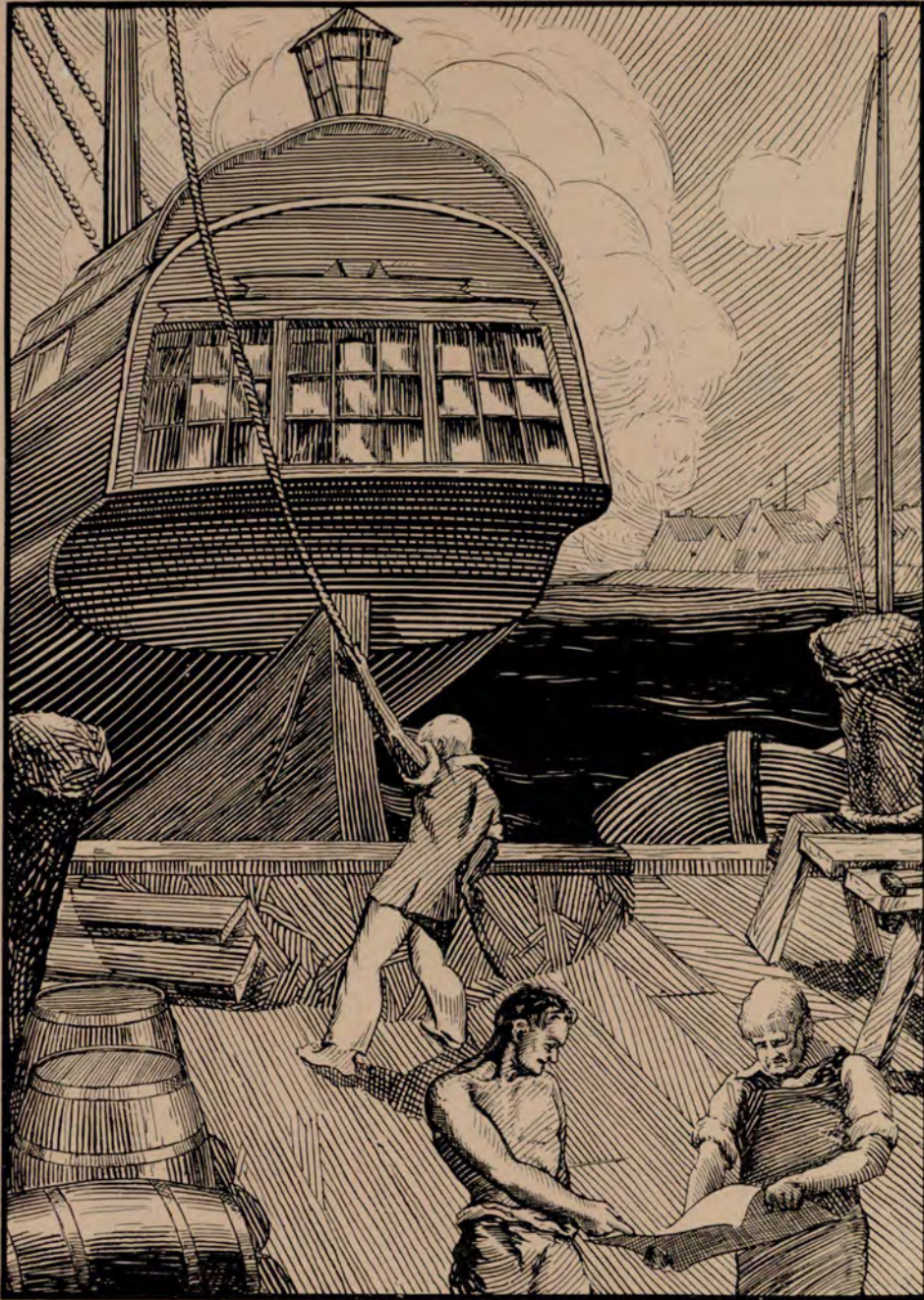
HARRELL, INA CATHERINE
HARRELL, MINNIE ELIZABETH
HARRIS, MARY ALTA
HARRIS, CLIFFORD LEON
HAWTHORNE, NOEL
HAYES, LOUISE
HAYNES, LOUISE FRANCES
HAYNIE, J. BRANDON
HAYS, RUSSELL M.
HOLLINGSWORTH, CHARLES G.
HOLMES, JOE MELL
HORD, JEWEL CAROLYN
HUNTER, JANIE BENETTA
HUTCHESON, MILDRED BEACH
HUTCHINS, PAUL
HYDE, MARVIN CLAY
HYNES, PICKETT

JEFFERIES, HENRIETTA R.
JOHNSON, CHARLOTTE V.
JOHNSON, EMOY S.
JOHNSON, NERIN C.
JOHNSON, WALDEMAR C.
JOINER, MRS. GRACE K.
JONES, CHAS. E.
JONES, CLIFF N.
JONES, HOWELL M.
JONES, PAUL
JONES, THOMAS R.

KARST, POOL
KELLOGG, HARRY R.
KETCHEM, WOODROW
KILDRUFF, JEANNE N.
KIMBRO, JAMES R.
KING, LEONARD A.
KIRK, JACK C.
KNOTT, LEONARD
KRICK, IRWIN

LANDIS, NICHOLAS E.
LANE, JANETTE
LAWERENCE, FRED R.
LAYFIELD, ZACK T.
LEFFLER, EDWIN
LEWIS, MAY
LIPSINS, HOWARD SAMUEL
LOGAN, ROBERT BOYNTON
McADAMS, J. W.
McDANIEL, EVANGELINE

MCDONALD, MRS. ROSALIE	PENN, ERIN C.	TALIAFERRO, J. W.
MCDOWELL, MRS. MARY CRADDOCK	PERKINS, GRACE	TATUM, HUBERT R.
McFARLAND, MARGARET LOUISE	PERKINS, ROBERT HOLBROOK	TAYLOR, MRS. ESTHER K.
MCGANGHEY, CLIFF HOLMES	PETTY, MARY WILLENE	THOMPSON, RALPH W.
McGINTY, PHILLIP LEON	PHILIPS, EDITH ORR	THRAN, UDO OSCAR
McGROW, ERLINE	PITTMAN, GEORGE EMMETT	TIMMERMAN, RANDOLPH
McKINNEY, VIRGIL WEYMAN, JR.	POST, MRS. MARY TYLER	TIMMS, HARVEY W.
MACAROV, RUBY	POWELL, GEORGE, JR.	TINGLE, LOIS
MAKAVER, SYLVAN A.	POWELL, WILLIAM MCKELDEN	TIPTON, J. H., JR.
MALCOM, MAURICE EDWARD	PRIEST, JOHN L.	TOUARD, HENRY C.
MALPASSE, JULIA BELLE	PRITCHARD, ROWLAND	TRIPPE, ALBERT R.
MALPASSE, WILLIAM H.		TUTTLE, MRS. MONTAGUE H.
MANDLE, BERNARD SCHWARTZ	RAINWATER, JAMES STRATON	UPSHAW, LUCILLE A.
MANNING, WILLIAM HENRY	RANSBOTHAM, SAM BEN	USSERY, JAMES T.
MARSH, LOUIE FRANKLIN, JR.	RAYFIELD, JACOBS HOWARD	
MARX, DAVID, JR.	REESE, CLARENCE ERNEST	VANDIGRIFFT, WALTER
MATHEWS, MYRTLE MARY	RESPESS, OCIE	
MATHIEU, JUSTIN	RESPESS, RICHARD WILLIAM	WAINWRIGHT, MRS. MARIE
MAY, JOSEPH RALPH	REVES, STEPHEN RAY	WAITT, MALCOLM G
MAYER, JAMES ROBERT	RODGERS, FLETCHER GRAY	WALKER, THOMAS B.
MAYNARD, WILLIAM S.	RUDOLPH, EDWIN LAWRENCE	WALKER, T. C.
MERRELL, MABEL		WALKLEY, BOLAND M.
MILLER, FIDELLE JOHN	SAPERSTEIN, MIRIAM J.	WALL, VICTOR S., JR.
MILLER, FRED LEE	SARRATT, HARRY M.	WARD, F. BAXTER
MILLIANS, CLEM ARDIS	SCOGGINS, TOM S., JR.	WATKINS, WAYNE ATLEE
MILLSAP, EDWARD MALDIN	SCOTT, SARAH	WATSON, JOE LEROY
MILLSAP, ROBERT M.	SETTLE, ELWYN M.	WAYNE, CLIFFORD DUNBAR
MITCHELL, CHARLES THOMAS	SELZE, J. A.	WELLS, JAMES EDWARD
MOBLEY, J. B.	SEYDEL, PAUL V.	WESLEY, ALLEN O.
MORGAN, JAMES BARTOW	SHEFFIELD, WALTER	WESLEY, ROBERT HAMMOND
MORRISS, IRENE LEONE	SHEPPARD, ROBERT V.	WHATLEY, ALICE SILVEY
MURRAH, CARROLL	SHEWMAKE, ELIZABETH	WILCOX, MYRTIS HAMILTON
MURRAY, GEORGIA	SHULMISTER, MORRIS	WILLIAMS, MARION E.
MUSE, JOHN DUNCAN	SHUMAN, JULIUS B., JR.	WILLIAMS, PHILLIP EDWIN
	SIKES, CLARENCE A.	WILLIAMS, WOODROW MARBUT
NICHOLS, WILLIAM	SILVEY, ELIZABETH	WILLIAMSON, GABRIEL G.
O'DONNELL, CHARLES JOSEPH	SISSON, ELSA R.	WILLINGHAM, EUGENE DUPONT
O'NEAL, ROBERT EMMETT	SIVILLS, WILLIAM H.	WILSON, ALFRED STEWART
OSBORNE, JEANETT MYRA	SMITH, LLOYD C.	WILSON, FRANCES
OUZTS, ROBERT B.	SMITH, MATTIE I.	WILSON, STEVEN WOODROW
OVERSTREET, BENJAMIN, JR.	SMITH, THEODORE R.	WING, HENRY CLIFFORD
OZMENT, PEARL DOROTHY	SOWELL, MARGARET	WINN, FRED A.
	STALKER, MRS. HARRIET	WOMACK, TAYLOR SCOTT
PARKER, JAMES OSCAR	STANFIELD, ANDREW L.	WOODBURY, RAYMOND A.
PASCHAL, FRANCIS MARION	STANTON, ARTHUR P.	WOODCOCK, JOHN FRANK
PATE, GEORGE TODD	STARNES, IVEY GREEN	WOODS, FERRIS WHITNEY
PATTERSON, ELOISE G.	STEINHAUER, EUGENE R.	WOOLF, HENRY ASHBY
PEEPLES, BERTHA VERA	STEPHENSON, JOHN W.	WREN, CARLTON LUTHER
PEITZ, LAWRENCE A.	STILL, WATSON	WRIGHT, MARY EVERETT
PENDLEY, MRS. ETHEL G.	SUTTENFIELD, PAULINE A.	WRIGHT, THELMA OBRA



A C T I V I T I E S

The Student Council

"The Student Council was organized to coordinate class activities and to encourage a close understanding between students and faculty."

CHARLES S. MCKAGEN, JR.
President

LLOYD C. GINN
Vice-President

JAMES L. LACHER
Secretary

THOMAS C. MASON
Treasurer

Representatives

Seniors

RAYMOND BRANDES
THOMAS MASON
JULIAN PRICE

Freshmen

WILSON CASH
D. M. COURSEY
CARL PRUETT
TOM SANDS*

Sophomores

ANGEL ALLEN
TILDEN BROOKS
CHARLES ELROD*
JULIUS LENNARD
WILLIAM POWELL*

Pre-Juniors

LOUIS KENNEDY
ROBERT KIMSEY*
JAMES LACHER
ESTELLE MCKIBBEN

Juniors

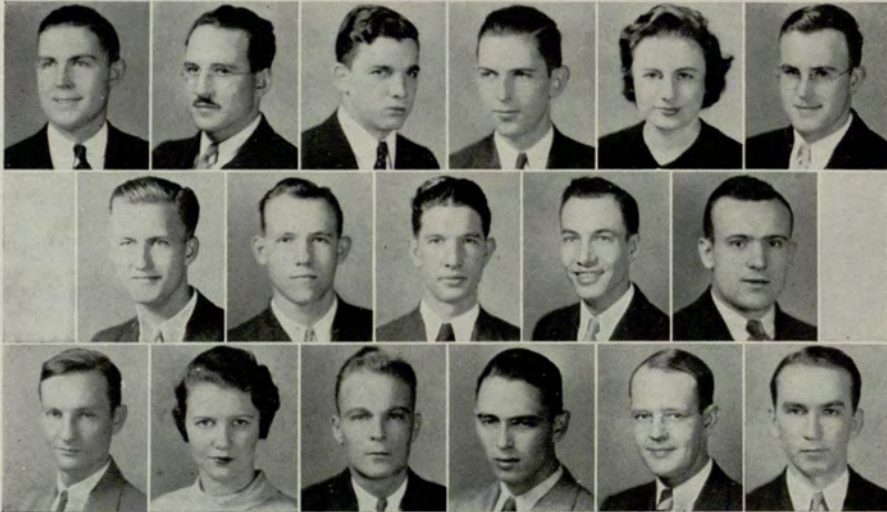
THORNTON FLANIGAN*
LLOYD GINN
JOE STRADLEY
PHILIP SHUTTLEWORTH

Publications

RAYMOND BRANDES†
Nocturne
CHARLES ED. MARTIN
Evening Signal

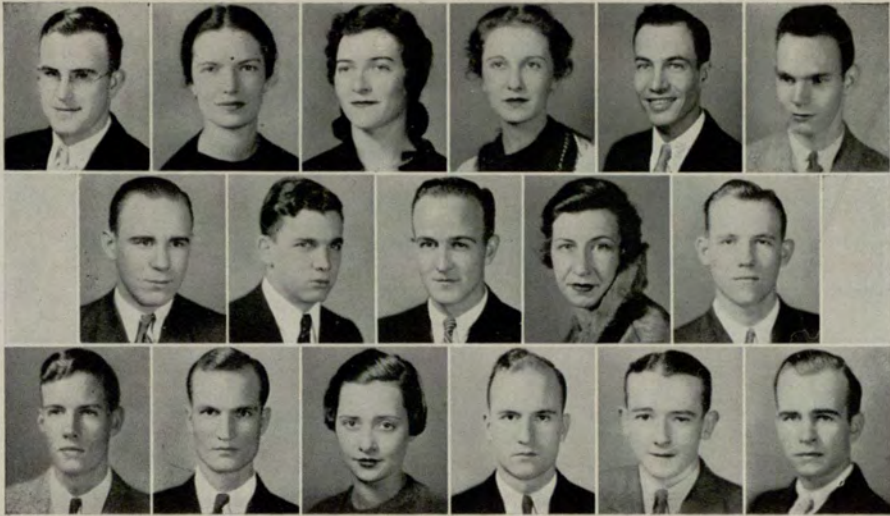
*Elected in February.

†Represents Senior Class and NOCTURNE.



McKagen Brooks Ginn Cash Lacher Coursey Mason Kennedy Allen Lennard Brandes
Martin McKibben Price Pruett Shuttlesworth Stradley

The Nocturne '35



Brandes Wing Davis Lacher Guy Swinford Paris Dance Kennedy Cash White
 Clark M. Strickland Duncan R. Strickland Clegg Eve

The Nocturne

RAYMOND BRANDES
Editor-in-Chief

ELEANOR DAVIS
 JAMES L. LACHER
 R. H. STRICKLAND
Associate Editors

MAURICE STRICKLAND
 KAY DUNCAN
Art Editors

DONALD CLEGG
Feature Editor

DOROTHY GUY
 GEORGE WING
 ALBERT CLARK
 WILSON CASH
Editorial Assistants



CHARLTON D. KEEN
Faculty Advisor

LOWELL M. WHITE
Business Manager

LEWIS KENNEDY
 R. C. LOWE, JR.
Associate Business Managers

VIRGINIA DANCE
 R. C. LOWE, JR.
Assistant to Business Manager

CHARLES SWINFORD
 WINNIE PARIS
 EMBRY P. EVE
 ANGEL ALLEN
Business Assistants

Inter-Fraternity Council

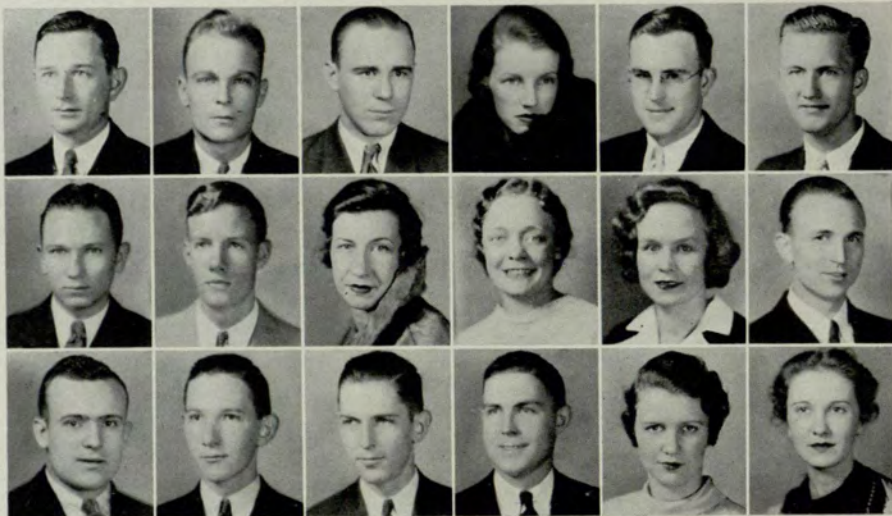
"The purpose of the Inter-Fraternity Council is to guide the various organization activities of the school, particularly with reference to dates for functions and to promote a close and harmonious affiliation among the clubs, societies, fraternities, and sororities of the University System of Georgia Evening School."

Officers

FRANCIS OSTEEN.....President
 JULIAN PRICE.....Vice-President
 GEORGE WING.....Secretary-Treasurer

Representatives

Alpha Kappa Psi.....Keneth Moss, Julian Price
 Comet Club.....Hilda Isakson, Mildred Flury
 Delta Lambda Sigma.....Winnie Paris, Anne Norman
 Delta Sigma Pi.....Francis Osteen, George Wing
 Faculty.....Dr. George M. Sparks, T. M. McClellan
 Hilarian Club.....Estelle McKibben, Virginia Dance
 Literary Guild.....Robert Lowe, Ed. Martin
 Phi Chi Theta.....Marcia Baker, Elizabeth Curtis
 Playcrafters.....Ewell Jackson, Tilden Brooks
 Speakers Club.....Tom Mason, Marion Mason
 Student Council.....Charles McKagen, Julius Lennard
 Theta Xi Zeta.....Raymond Brandes, Ernest Barber
 Venetian Society.....Albert Clark, Culver Caraway



Osteen
Caraway
Lennard

Price
Clark
M. Mason

Wing
Dance
T. Mason

Baker
Flury
McKagen

Brandes
Isakson
McKibben

Brooks
Jackson
Paris

The Nocturne '35



Martin Gregory Flanigan Guy Moor Hubbard Brandes McGuire Clark Dickson Flury
Powell Ray Reinhardt Strickland White Mulkey Wing Paris Wimberly

The Evening Signal

C. ED. MARTIN
Editor-in-Chief

RALPH MOOR
JOHN TALIAFERRO
LOWELL WHITE
MILDRED FLURY
Associate Editors

GEORGE WING
DOROTHY GUY
WINNIE PARIS
RAYMOND BRANDES
Feature Editors

CHARLTON WIMBERLY
ALBERT CLARK
ROBERT CHAMBERS
A. D. GREGORY, JR.
CHARLES DICKSON, JR.
MAURICE STRICKLAND
BEN T. BEASLEY
JAMES MCGUIRE
BILL POWELL
JOE STRADLEY
Editorial Assistants



CHARLTON D. KEEN
Faculty Advisor

J. THORNTON FLANIGAN
Business Manager

R. C. LOWE, JR.
Associate Business Manager

C. V. RAY
LLOYD C. GINN
PHIL J. SHUTTLEWORTH
ANTHA MULKEY
MILDRED HANSELL
GARNETT G. REINHARDT
ROBERT CHAMBERS
Business Assistants

Delta Mu Delta

Founded New York University, November, 1913

Theta Chapter

Installed June 9, 1931



"The object of Delta Mu Delta is to promote higher scholarship in the training for business and to recognize and reward scholastic attainment in commercial studies."

Officers

GEORGE MANNERS, *President*
HOWARD JOHNSON, *Vice President*
ANTHA MULKEY, *Assistant Secretary*
WILLIAM GOLDSMITH, *Assistant Treasurer*
PROF. FRED B. WENN, *Faculty Secretary-Treasurer*

Delta Mu Delta

Members

1934

MILDRED CHESTNUTT
FRANCIS DUGGAN
J. W. GOLDSMITH

M. D. HARPER
GEORGE MANNERS
ANTHA MULKEY

E. L. RIVERS

1933

JOHN BOSWELL
F. C. BRANDES

HOWARD B. JOHNSON
CATHERINE MARTIN

FRANK WELLS

1932

T. W. DUNCAN
HARRY GAULT

MARGARET LLOYD
RUTH ROGERS

1931

FAY ALLEN
W. W. AYCOCK
E. H. BISHOP
MARY CHEATHAM BUCHHOLZ
R. G. CARLSEN
L. C. EVANS
RICHARD HILLS
JOHN JANOULIS
H. C. KITCHENS
C. ROY MCCORMACK

GEO. E. PARKER
NORMAN E. PETTIS
JOHN M. REED, JR.
H. L. ROBINSON
C. S. SPINKS
BERNARD SUTTLE, JR.
M. GUY SWANSON
M. W. SWINT
C. T. ZELLNER
J. W. ZUBER, JR.



Manners



Mulkey



Johnson

Theta XI Zeta

(Owls Club)

Founded Evening School November 20, 1924



“The purpose is to honor those men who have taken an active interest in the welfare and activities of the Evening School; to honor those men who have attained a scholastic average of eighty or above at the completion of at least two years of degree work at the Evening School; to promote better fellowship by taking an active part in making new men acquainted; to encourage and promote any objective whereby the Evening School may be benefited.”

Officers

JEROME WING, *President*
MARION MASON, *Vice-President*
ERNEST BARBER, *Secretary*
RAYMOND BRANDES, *Treasurer*

The Nocturne '35

Theta XI Zeta

Members

ERNEST BARBER
RAYMOND BRANDES
W. P. CLARK, JR.
DONALD CLEGG
M. D. HARPER, JR.
RICHARD HILLS
EWELL JACKSON
H. B. JOHNSON
ALEX LINDHOLM
EMBERT LUSINK

MARION MASON
THOMAS C. MASON
CHARLES MCKAGEN
F. M. OSTEEN
JULIAN PRICE
MAURICE STRICKLAND
ELMER TRULOVE
LEWIS M. WHITE
LOWELL M. WHITE
JEROME WING



Wing M. Mason Brandes Clark Clegg Jackson
McKagen Johnson Price Lindholm Strickland T. Mason Trulove White
Osteen

Alpha Kappa Psi

Founded New York University, October 5, 1904

Pi Chapter

Installed November 27, 1917



COLORS *Navy Blue and Gold*

FLOWERS *Yellow Rose*

PUBLICATION *The Alpha Kappa Psi Diary*

“The object of this Fraternity shall be to further the individual welfare of its members; to foster scientific research in the fields of commerce, accounts and finance; to educate the public to appreciate and demand higher ideals therein; and to promote and advance in institutions of collegiate rank courses leading to degrees in Business Administration.”

Officers

JEROME S. WING, President

CULVER CARAWAY, Vice-President

RALPH C. MOOR, Secretary

SIDNEY K. JOHNSON, Treasurer

JULIAN PRICE, Master of Rituals

DOUGALD AVERA, Diary Correspondent

Alpha Kappa Psi

Members

DOUGALD AVERA
ERNEST BARBER
WALTER BENSON
CULVER CARAWAY
EUGENE HICKMAN, JR.
RICHARD A. HILLS
JOHN HOFFMAN
SAMUEL HUBBARD

HUB HUDDLESTON
E. J. JACKSON
E. Y. JACKSON
MILLARD JENKINS
SIDNEY K. JOHNSON
JOSEPH A. JOHNSTON
ALBERT LEE
JULIUS LENNARD
KENNETH MOSS

WILLIAM O'CALLAGHAN
H. G. PIERCE, JR.
WILLIAM POWELL
LEWIS RIDEN
EARL SAVILLE
RAYMOND A. STYLES
GUY WARD, JR.
JEROME S. WING

Pledges

WILSON CASH
BOBBY CLARK
LOUIS CORRIGAN
JAMES DICKSON
JOHN DRISKELL
HOLMES FAY
ROY FRICKS

CLARENCE HILL
LEWIS KENNEDY
GUY LICHLYTER
TOM REILLY
TOM SEALS
RANDOLPH TIMMERMAN
JACK B. TUCKER



Wing
Lennard

Caraway
Corrigan
Moss

Moor
Hickman
O'Callaghan

Johnson
Hubbard
Pierce

Avera
Jenkins
Price

Benson
Kennedy
Seals

Chalmers
Lee
Saville

Clark
Styles

International Fraternity of Delta Sigma Pi

Founded New York University November 7, 1907

Kappa Chapter

Installed March 12, 1921



COLORS	<i>Old Gold and Royal Purple</i>
FLOWERS	<i>Red Rose</i>
INTERNATIONAL PUBLICATION	<i>The Deltasig</i>
LOCAL PUBLICATION	<i>Kappa Life</i>

“A fraternity organized to foster the study of business in universities; to encourage scholarship and the association of students for their mutual advancement by research and practice; to promote closer affiliation between the commercial world and students of commerce and to further a higher standard of commercial ethics and culture and the civic and commercial welfare of the community.”

Officers

FRANCIS M. OSTEEN, *Head Master*
THOMAS C. MASON, *Senior Warden*
ELMER TRULOVE, *Junior Warden*
MARION B. MASON, *Treasurer*
W. ELWOOD AMOS, *Scribe*
HOWARD B. JOHNSON, *Chancellor*
CHARLES A. SHELTON, *Historian*
WILLIAM B. JACKSON, *Senior Guide*
GEORGE L. AMOS, *Junior Guide*
OLIN McEWEN, *Chapter Adviser*
GEORGE WING, *Master of Ceremonies*
LOWELL M. WHITE, *Master of Festivities*
ROBERT B. KIMSEY, *Deltasig Correspondent*

The Nocturne '35

International Fraternity of Delta Sigma Pi

Members

ELWOOD AMOS
 GEORGE L. AMOS
 W. SCOTT BLACKSTOCK
 RAYMOND L. BRANDES
 JAMES H. BROWN
 JACK L. CHAPMAN
 ALBERT P. CLARK
 PAUL W. CLARK
 DONALD B. CLEGG
 OSCAR B. CORNELIUS
 CHARLES E. EIROD
 LLOYD C. GINN
 J. WILLIAM GOLDSMITH
 A. D. GREGORY, JR.
 JAMES GRIFFITH
 M. D. HARPER, JR.

GROVER C. HAVARD
 JIMMY HENDERSON
 JAMES HERREN
 WILLIAM B. JACKSON
 HOWARD B. JOHNSON
 ROBERT B. KIMSEY
 LEONARD J. KUYPER
 JAMES L. LACHER
 DAVID LANDERS
 ALEX LINDHOLM
 GEORGE E. MANNERS
 JOHN WESLEY MARTIN
 MARION B. MASON
 TOM C. MASON
 LEON L. MOYE
 CHARLIE S. MCKAGEN

THOMAS M. NORTH
 FRANCIS M. OSTEEN
 JOSIAH B. PATTERSON
 W. FRED PHILLIPS
 J. R. RICHARDSON
 ROY C. SASSER
 CHARLES A. SHELTON
 MAURICE A. STRICKLAND
 CHARLES SWINFORD
 ELMER TRULOVE
 HARRY T. WELLS
 LEWIS M. WHITE
 LOWELL M. WHITE
 CHARLTON WIMBERLY
 GEORGE WING
 GARNETT O. WOOD

Faculty Members

H. E. DENNISON

C. D. KEEN

Pledges

GORDON W. OWENS
 J. LEWIS PHILLIPS

RICHARD W. RESPESS
 THOMAS W. SWAFFORD



Osteen	T. Mason	Trulove	M. Mason	E. Amos	G. Amos	Brandes	Blackstock	Chapman
Henderson	A. Clark	W. P. Clark	Clegg	Cornelius	Ginn	Gregory	Havard	Lindholm
Owens	Herren	Jackson	Johnson	Kimsey	Kuyper	Lacher	Landers	
	Manners	E. Martin	J. Martin	McEwen	McKagen	Moye	North	
	Phillips	Strickland	Swinford	Le. White	Lo. White	Wimberly	Wing	Wood

Delta Lambda Sigma Fraternity

Founded Washington, D. C.

Iota Chapter

Installed January 28, 1934

COLORS *Red and White*
FLOWER *American Beauty Rose*

“Development of mind, and attainment of individual and social excellence.”

Officers

ANNE NORMAN, *President*
MILDRED HANSELL, *Vice-President*
WINNIE PARIS, *Secretary*
KATHLEEN DUNCAN, *Treasurer*
MARY PITTMAN, *Sergeant-at-Arms*

Delta Lambda Sigma Fraternity

Members

RAY BEAVERS
ELIZABETH BRIDGES
EDNA PAYNE COOPER
KATHLEEN DUNCAN
SARA FITZPATRICK
NELL GILBERT
DOROTHY GUY
MILDRED HANSELL
CAROLYN HOGUE
NANCY HUDSON
MINTA JACKSON
ELIZABETH JOINER

LOIS LATTY
HAZEL LOVELACE
ESTELLE MCKIBBEN
DORIS MAYO
ANTHA MULKEY
ANNE NORMAN
WINNIE PARIS
MARY PITTMAN
SALLIE REESE
SUE SUTTLES
NETTIE WEBSTER
SARA WOOD

Faculty Advisor

MRS. RICHARD TROTTER

Patronesses

MRS. ELMER G. CAMPBELL
MRS. LLOYD W. CHAPIN
MRS. LUTHER R. HOGAN



Norman
Hudson

Hansell
Joiner

Paris
Mayo

Duncan
Mulkey

Baker
Webster

Phi Chi Theta Sorority

Founded Chicago, Illinois, June 16, 1924

Upsilon Chapter

Installed April 9, 1929



COLORS	<i>Lavender and Gold</i>
FLOWERS	<i>Lavender Iris</i>
PUBLICATION	<i>"The Iris"</i>

"To promote the cause of higher business education and training for all women, to foster high ideals for women in business careers, and to encourage fraternity and cooperation among women preparing for such careers."

Officers

- ELIZABETH CURTIS, *President*
- VIRGINIA DANCE, *Vice-President*
- HILDA ISAKSON, *Treasurer*
- AGNES GUMBY, *Recording Secretary*
- MARCIA BAKER, *Corresponding Secretary*
- ELIZABETH JOINER, *Iris Correspondent*
- MINNIE TOPHAM, *Grand Councillor*
- BERNICE MOSELEY, *Chapter Hostess*

The Nocturne '35

Phi Chi Theta Sorority

Members

MARCIA BAKER
ELIZABETH CURTIS
VIRGINIA DANCE
AGNES GUNBY
FRANCES HASKINS
HILDA ISAKSON
ELIZABETH JOINER

JOE KLOECKLER
ESTELLE MCKIBBEN
MATTIE MERIWETHER
BERNICE MOSELEY
AVRILLA SHERIDAN
MARGARET TIRRELL
MINNIE TOPHAM
LYNDA WEBB

Pledges

EDNA PAYNE COOPER

MCDUGALD EVANS



Curtis

Joiner

Dance

McKibben

Isakson

Webb

Baker

Hilarian Club

Founded Evening School April, 1931



COLORS *Green and White*
FLOWER *Gardenia*

“The purposes of the club are: To give, throughout the school year, such social activities as the majority of the members shall consider advisable; to promote a better understanding among the members of the club and to encourage a better relationship between them; to encourage scholastic attainment among its members in their work toward a degree; and to work toward an ever-growing Evening School, with an ever-increasing girls’ student body.”

Officers

ESTELLE MCKIBBEN, *President*
ELIZABETH JOINER, *Vice-President*
MARY FRANCES COLL, *Secretary-Treasurer*

The Nocturne '35

Hilarian Club

Members

MARCIA BAKER

ELIZABETH CURTIS

VIRGINIA DANCE

DORIS GIBBS

DOROTHY GUY

MILDRED FLURY

NANCY HUDSON

HARGARET JACKSON

MILDRED JACKSON

ELIZABETH JOINER

RUTH MCGEE

ESTELLE MCKIBBEN

ELISE OELSNER

WINNIE PARIS

MARY PITTMAN

LYNDA WEBB

EVELYN WHEAT

SARA WOODS



McKibben

Flury

Joiner

Guy

Coll

Hudson

Baker

McGee

Curtis

Paris

Dance

Webb

Floyd

Midos Debating Society

Founded Evening School November 5, 1934

"The purpose of this society shall be the general improvement of speech of its members with the concentration on debating in order to furnish a possible source for inter-collegiate debates."

Officers

MILTON F. ALLEN, *President*

SAM HUBBARD, *Vice-President*

FRANCES DAVIDSON, *Secretary-Treasurer*

The Nocturne '35

Midos Debating Society

Members

MILTON F. ALLEN

TILDEN BROOKS

FRANCES DAVIDSON

MARY LOU DURHAM

ARTHUR GOTTESMAN

CARL A. HERBIG

CLARENCE H. HILL

SAM B. HUBBARD

BEN F. JOHNSON

JOE N. KALISH

JAMES L. LACHER

B. S. MANDLE

ED. MARTIN

BILL POWELL

BILL SCOGGINS

CHRISTINE WING

LOUIS ZIPPERMAN



Allen

Kalish

Davidson

Lacher

Gottesman

Powell

Herbig

Scoggins

Hill

Comet Club

Founded Evening School, 1926

COLORS..... *Red and White*
FLOWER..... *Carnation*

“This club was organized as a women’s organization for the promotion of social and academic activities in the student body.”

Officers

HILDA ISAKSON, *President*
NANCY HUDSON, *Vice-President*
ELEANOR DAVIS, *Secretary*
CHRISTINE WING, *Treasurer*
ANTHA MULKEY, *Senior Director*
ELIZABETH CURTIS, *Junior Director*
PATRICIA HOGUE, *Pre-Junior Director*
FIDELIS KLOECKLER, *Sophomore Director*
IRENE HARVEY, *Freshman Director*

The Nocturne '35

Comet Club

Members

ANGEL ALLEN
FRANCES BAKER
WILLIE MAE BATEMAN
MARGARET BROOKS
ELIZABETH CURTIS
VIRGINIA DANCE
FRANCES DAVIDSON
ELEANOR DAVIS
ALICE DOWNING
McDOUGALD EVANS
MILDRED FLURY
EDITH GREER
DOROTHY GUY
MARY HAMMOND
MILDRED HANSELL
ELEANOR HARRISON
ETHEL HARVEY
IRENE HARVEY
PATRICIA HOGUE
NANCY HUDSON

HILDA ISAKSON
MINTA JACKSON
JULIA JOHNSON
FIDELIS KLOECKLER
MARY MALPASSE
PAULINE MARTIN
BERNICE MATHEWS
DORIS MAYO
GERTRUDE McDOWELL
ESTELLE MCKIBBEN
ANTHA MULKEY
LOUISE RAINEY
MARION RESPESS
MARY STEPHENS
JEWELL TROUT
ALICE VARELA
NETTIE WEBSTER
EVELYN WHEAT
FRANCES WILSON
CHRISTINE WING

MARY EVERETT WRIGHT



Isakson
Flury
Mayo

Hudson
Guy
McDowell

Davis
Hansell
McKibben

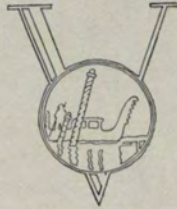
Wing
Johnson
Mulkey

Curtis
Kloeckler
Swiney

Davidson
Martin
Varela

Venetian Society

Founded Evening School, 1926



COLORS *Royal Purple and Old Gold*

“The purpose of the Venetian Society is to endeavor to create a better social, educational, and civil relationship among Evening School students.”

Officers

JULIAN PRICE, *President*
MARION MASON, *First Vice-President*
CULVER CARAWAY, *Second Vice-President*
MILLARD JENKINS, *Secretary*
THOMAS MASON, *Treasurer*
ELMER TRULOVE, *Historian*

Sponsors



Miss Jacqueline Howard



Miss Myrth McCracken

The Nocturne '35

Venetian Society

Members

CULVER CARAWAY
ALBERT CLARK
PAUL CLARK
ARCH FITZPATRICK
LUCIAN GRAVITT
JAMES HENDERSON
GENE HICKMAN
EWEEL JACKSON
MILLARD JENKINS
BEN JOHNSON
SYDNEY JOHNSON
TOM KINGSTON
EMORY KINARD
JULIUS LENNARD

ROBERT LOWE
MARION MASON
THOMAS MASON
JOE MOBLEY
GWINN MOSELEY
BILL O'CALLAGHAN
JULIAN PRICE
CLIFF RAY
GARNETT REINHARDT
MAURICE STRICKLAND
ELMER TRULOVE
JACK TURNER
JAMES WALLACE
JEROME WING

Faculty Members

DR. GEORGE M. SPARKS
T. M. McCLELLAN

H. E. DENNISON
HARLEE BRANCH, JR.



Price
Fitzpatrick
Lowe

M. Mason
Gravitt
O'Callaghan

Caraway
Hickman
Ray

Jenkins
Jackson
Reinhardt

T. Mason
Johnson
Strickland

A. Clark
Lennard
Trulove

P. Clark
Lindholm
Wing

Speakers Club

Founded Evening School January 26, 1932



"The Speakers Club was founded at the University System of Georgia Evening School for the purpose of serving the school and better fitting the Speakers Club members for successful life work; by promoting interest in public speaking among its members; by affording to those already interested in public speaking an opportunity to improve their abilities; by encouraging participation in inter-collegiate debating; and, as a result, furthering the development of a high standard of education."

Officers

ELMER E. TRULOVE, *President*
GEORGE WING, *Vice-President*
GARNETT REINHARDT, *Secretary*
HARRY WHITE, *Treasurer*

Executive Committee

A. D. GREGORY, JR.
ROBERT C. LOWE, JR.
CLYDE S. MINGLEDORFF

Speakers Club

Members

W. ELWOOD AMOS
 ROBERT M. CHAMBERS
 JACK L. CHAPMAN
 ALBERT P. CLARK
 OSCAR B. CORNELIUS
 LOUIS W. CORRIGAN
 CHARLES DICKSON, JR.
 J. THORNTON FLANIGAN
 LLOYD C. GINN
 A. D. GREGORY, JR.
 JAMES R. HENDERSON
 J. HUGH HOWARD
 HOWARD B. JOHNSON
 ALEX LINDHOLM
 ROBERT C. LOWE, JR.

CHARLES S. MCKAGEN, JR.
 GEORGE E. MANNERS
 MARION B. MASON, JR.
 THOMAS C. MASON
 T. E. MATTHEWS, JR.
 CLYDE S. MINGLEDORFF
 RALPH C. MOOR
 CLIFTON V. RAY
 GARNETT G. REINHARDT
 JOE L. STRADLEY
 MAURICE STRICKLAND
 E. E. TRULOVE
 B. FRANK WELLS, JR.
 HARRY L. WHITE
 GEORGE WING

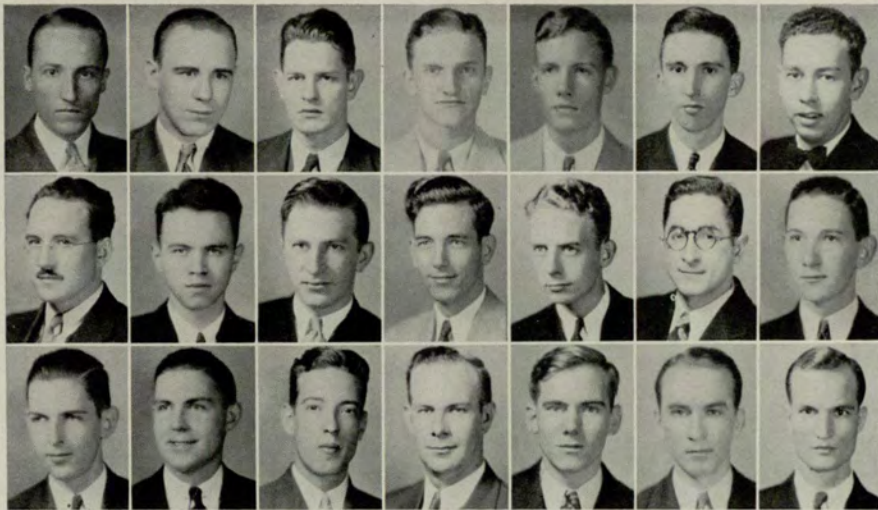
Pledges

M. M. WEEN

Faculty Members

DR. GEORGE M. SPARKS
 T. M. MCCLELLAN
 HARLEE BRANCH, JR.

HUBERT E. DENNISON
 NOAH WARREN
 W. C. CANTRELL



Trulove
Ginn
T. Mason

Wing
Gregory
McKagen

White
Johnson
Moor

Amos
Lindholm
Ray

Clark
Lowe
Reinhardt

Corrigan
Manners
Stradley

Flanigan
M. Mason
Strickland

Playcrafters

Founded Evening School September 25, 1932



"The Playcrafters is an organization formed to further the study of dramatic art through research, study, and the sponsoring and presentation of plays."

Officers

EWELL Y. JACKSON, *President*
MILDRED HANSELL, *Vice-President*
ANTHA MULKEY, *Secretary*
MAURICE STRICKLAND, *Treasurer and Business Manager*
RAYMOND STYLES, *Stage Manager*
D. FITZGERALD, JR., *Property Manager*
TILDEN BROOKS, *Publicity Manager*

The Nocturne '35

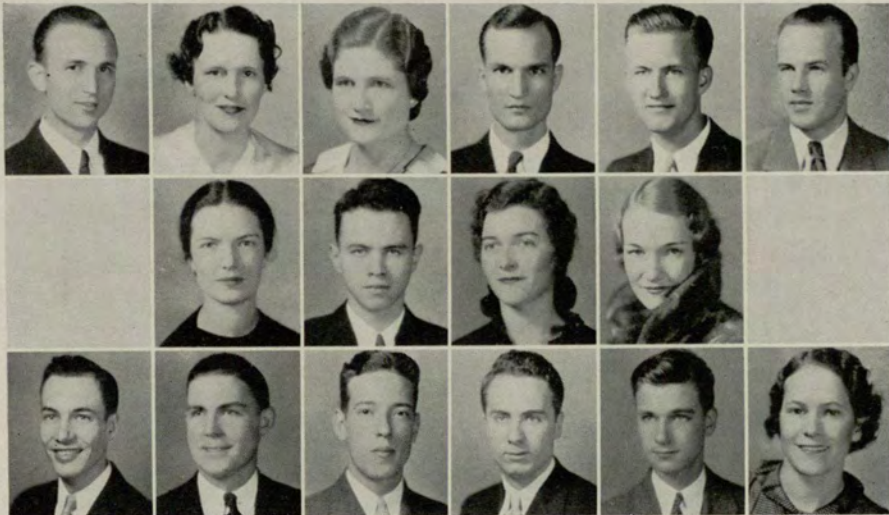
Playcrafters

Members

TILDEN BROOKS
PAUL CLARK
VIRGINIA DANCE
ELEANOR DAVIS
DEAN DREYER
MCDUGALD EVANS
BILL FIFE
D. FITZGERALD
RALPH GIBSON
A. D. GREGORY
JOHN M. GREGORY
DOROTHY GUY
MILDRED HANSELL
CAROLYN HOGUE
NANCY HUDSON
EWELL JACKSON
JULIA JOHNSON
ELIZABETH JOINER

LEWIS KENNEDY
PAULINE MARTIN
CHARLES MCKAGEN
ESTELLE MCKIBBEN
RALPH MOOR
J. GORDON MOORE, JR.
ANTHA MULKEY
BOBBIE PRUITT
LOUISE RAINEY
CLIFF RAY
CHARLES SHOCKLEY
MAURICE STRICKLAND
RAYMOND STYLES
JULIA SWINEY
JOHN TALIAFERRO
EVELYN WHEAT
CHARLTON WIMBERLY
JEROME WING

WILLIE WOODALL



Jackson
Kennedy

Hansell
Davis
McKagen

Mulkey
Gregory
Moore

Strickland
Guy
Styles

Brooks
Hudson
Wimberly

Clark
Rainey

Intra-Mural Key

"A fraternity organized to promote: A closer understanding and cooperative spirit among the students, and between the student body and school administration; an aspiration for greater intellectual achievement; a study of student problems to the end that all student life may be enriched, and the progress and the best interest of the University System of Georgia Evening School, in which this organization is founded, may be stimulated and promoted."

Officers

CHARLES S. MCKAGEN, JR., *President*
BEN OVERSTREET, JR., *Vice-President*
RALPH MOOR, *Secretary*
J. THORNTON FLANIGAN, *Treasurer*

Members

CHARLES CHALMERS
J. THORNTON FLANIGAN
LLOYD GINN
HOWARD JOHNSON
GEORGE MANNERS
CHARLES MCKAGEN
RALPH MOOR

BEN OVERSTREET
PHILIP SHUTTLEWORTH
JOE STRADLEY
ROBERT STRICKLAND
RAYMOND STYLES
ELMER TRULOVE
GUY WARD

Faculty Member

DR. GEORGE M. SPARKS



McKagen
Manners

Overstreet
Shuttleworth

Flanigan
Stradley

Chalmers
Strickland

Ginn
Styles

Johnson
Trulove

Glee Club

"The purpose of the Glee Club is to furnish entertainment for school functions and to act as an ambassador of good will by offering its services to other schools and civic organizations."

Officers

PAUL L. OVERBAY, *President*
 ROBERT J. GUY, *Vice-President*
 FRED L. VOLBERG, *Secretary-Treasurer*
 JOHN D. HOFFMAN, *Director*
 HERBERT GOODE, *Accompanist*
 CHARLES SNOW, *Librarian*

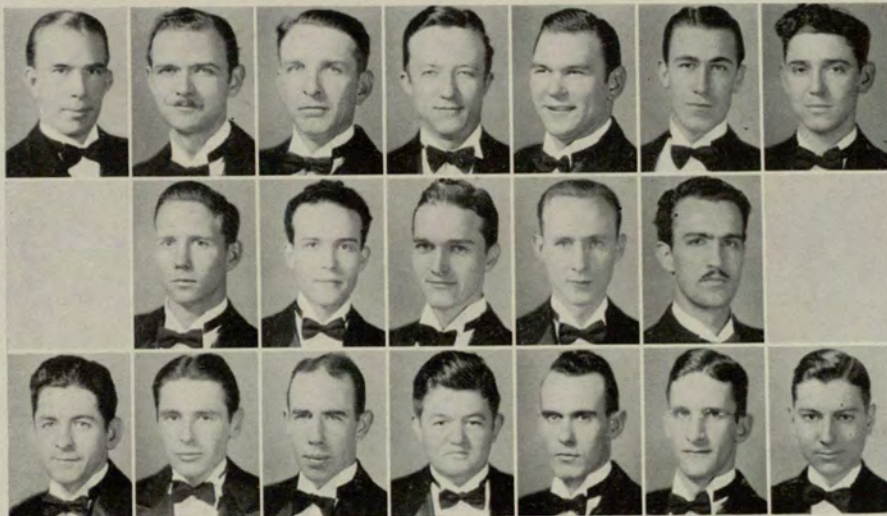
Members

EMORY B. BELL
 EUGENE B. BRISTOW
 RONALD E. DOYAL
 WARD B. DUVALL
 CHARLES R. EDENS
 E. P. ENGLAND
 TERRY EVANS
 A. M. EVERITT
 ROY T. FRICKS
 JOHN L. GIBSON
 HERBERT GOODE
 JACK GRANADE
 ROBERT J. GUY

NOEL HAWTHORNE
 WILLIS T. HAWKINS
 CHARLES G. HOLLINGSWORTH
 ERNESTO MARQUES
 WILLIAM V. NICHOLS
 PAUL L. OVERBAY
 CLARENCE A. PAINE
 M. W. PIERSON
 CHARLES SNOW
 WESLEY TIMMS
 FRED L. VOLBERG
 RANSE H. WHITWORTH
 JAMES WILEY

Faculty Advisor

JOHN D. HOFFMAN



Hoffman	Bell	Bristow	Doyal	DuVall	Edens	Everitt
Nichols	Gibson	Guy	Hawkins	Hollingsworth	Marques	Whitworth
	Overbay	Snow	Paine	Timms	Volberg	



F E A T U R E S



The Nocturne '35

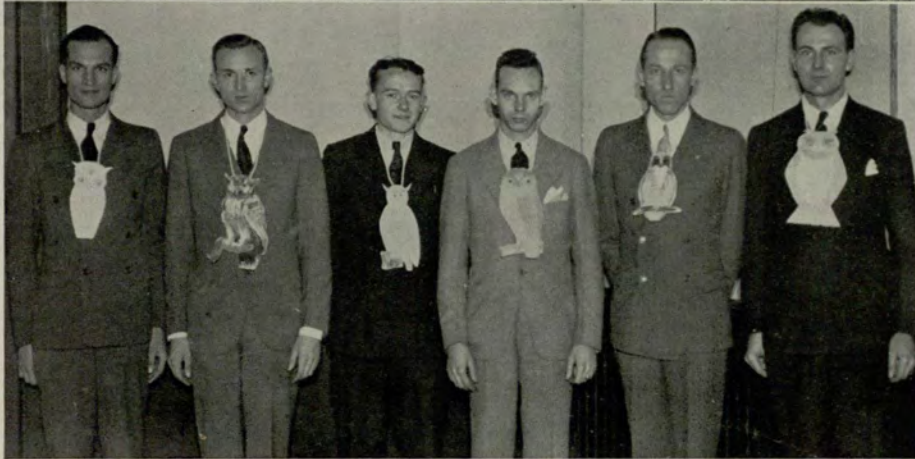


UNIVERSITY SYSTEM OF GEORGIA EVENING SCHOOL

The Nocturne '35



The Nocturne '35



The Nocturne '35



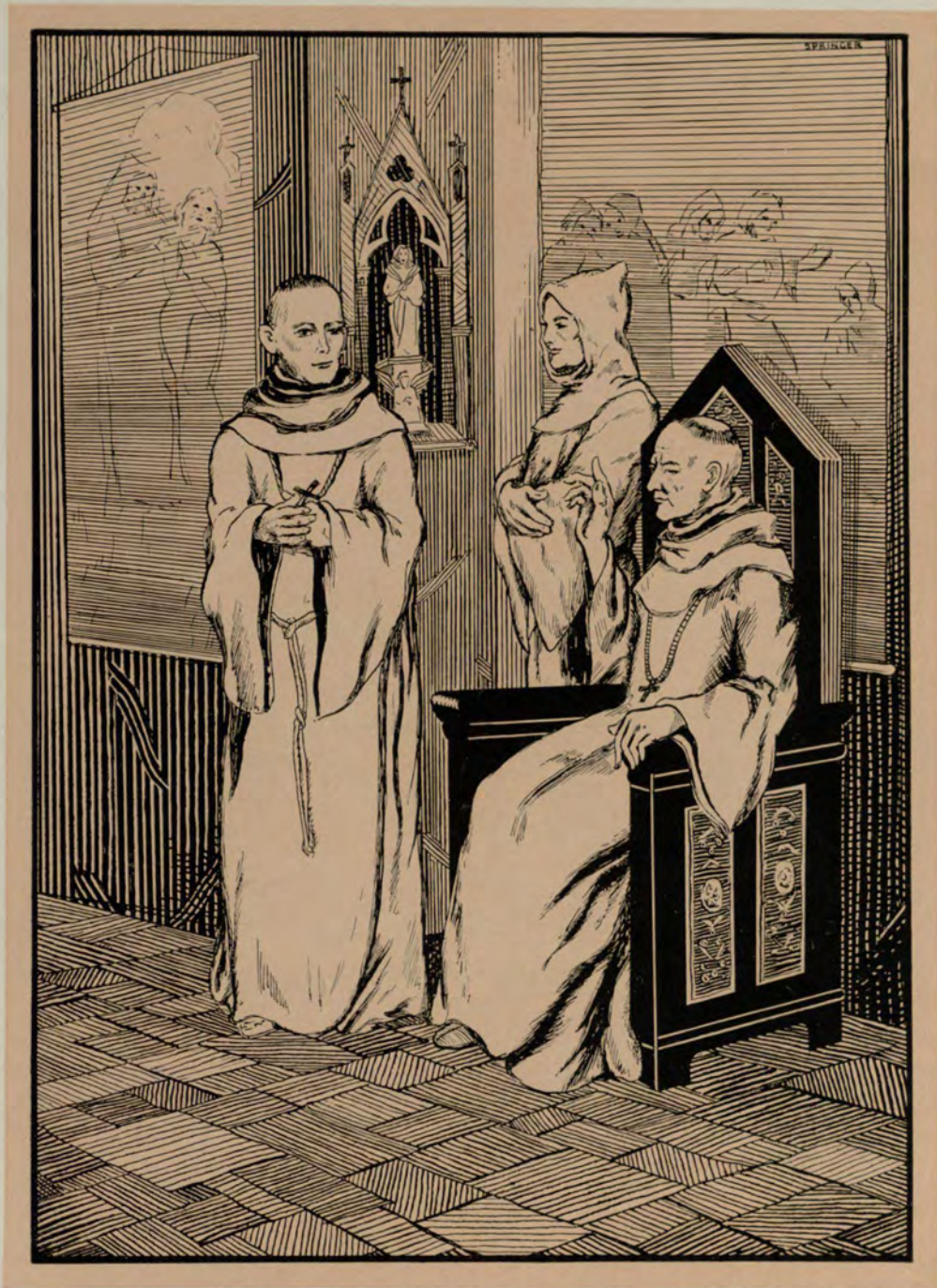
Photographs made at Noel pines, Lodge of Alpha Kappa Psi Fraternity, and phi Chi Theta Sorority and a group of Phi Chi Theta Sorority members attending a National Convention in Chicago.

The Nocturne '35



Photographs made at *Kappa Lake* and *Deltasig Lodge* on country estate of Kappa Chapter of Delta Sigma Pi Fraternity, near Tucker, Ga.





ADVERTISEMENTS



UNIVERSITY SYSTEM OF GEORGIA

EVENING DIVISION

ATLANTA, GEORGIA

CO-EDUCATIONAL

Offers work leading to degrees: Bachelor of Arts, Bachelor of Science, Bachelor of Science in Commerce, A.B. in Education, B.S. in Education, Master of Science in Commerce.

Special courses are offered for certificates of school teachers, as well as Certified Public Accountants, and the coveted Chartered Life Underwriter degree.

More than forty college teachers selected from the leading faculties of Atlanta colleges and universities, who teach several hundred college subjects to more than twelve hundred young men and young women of Atlanta.

Learn while you earn.

Earn while you learn.



Compliments of

ARCADE RESTAURANT

110 Forsyth Street

Next to Carnegie Library

STEAKS

CHOPS

SEA FOODS

Compliments of

LUCY WOOD CAFETERIA

73 Walton Street

Breakfasts, Luncheons and Evening Meals Served and Prepared
By LUCY HOOD, B.S.H.E.

Compliments of

Hartman's Cafe

"Famous for Fine Foods"

105 Luckie Street

OPEN ALL NIGHT

Compliments of

MEDCROFT'S

27 Cain Street, N. W.

Opposite Henry Grady Bldg.

LUNCHES

Hunter's Buffet

72 Forsyth Street

BEER - SANDWICHES

York's Coffee Shop

87 Poplar Street, N. W.

"A Good Place to Eat"

Compliments of

STANDARD DRUG CO.

Standard Building

J. T. YOUNG, *Manager*

LUNCHES

Across from Retail Credit Co.

Carithers-Wallace-Courtenay

CONSULT US ON FILING YOUR
RECORDS—BOTH CURRENT
AND OLD

We Carry a Complete Line of
Filing Cabinets, Desks, Chairs, Storage
Cabinets, Lockers, Transfer Cases, Filing
Systems, Folders, Guides, Cards, Binders,
Ledger Sheets, Blank Books, Office
Supplies of Every Description

*The Most Complete Office Equipment
and Supply Service in the Southeast*



ATLANTA

WA. 9200

THE EVENING SIGNAL

*is proud of the opportunity
to contribute to the
publication of*

THE NOCTURNE

(This is a paid advertisement)

"Everything Musical"

Warren Music Store

62 Broad St., N. W.

Headquarters for

BAND and ORCHESTRA
INSTRUMENTS

Sheet Music, Musical Accessories
All Makes String Instruments

McCREARY PRINTING COMPANY

PRINTING - ADVERTISING

CARDS, STATIONERY,
OFFICE FORMS, FOLDERS,
BOOKLETS, CIRCULARS

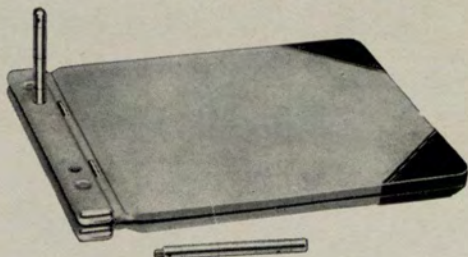
Phone WALnut 6770

117 Edgewood Ave., S. E.

ATLANTA, GA.

Binders of Every Description Made to Order

Old Binders Made Like New
Re-binding Bound Volumes



Wyco "Dixie Made" Binders

J. E. Dickerson, Jr.
Commercial Printing
WALnut 7030
156 Piedmont Ave., at Ellis St.
ATLANTA, GEORGIA

Owen Drug Company

SANDWICHES MADE
TO ORDER

Candies, Drinks, Cigarettes

*"Meet Your Friends Across
the Street"*

Accurate Prescriptions

CAPS AND GOWNS *for the* 1935 SENIOR CLASS

Furnished by
SOUTHERN CAP & GOWN
COMPANY

Represented by
FRED PAGE
GEO. MUSE CLOTHING CO.

KIRK de VORE

and

His ORCHESTRA

—○—

BILL CLARKE
Manager

—○—

VERnon 2672

—○—

ATLANTA, GEORGIA

UNIVERSITY
COFFEE
SHOP

Lunches

Drinks

Candies

"Where Evening School Students Meet"

223 Walton Street

Make This Your Permanent Eating Place

Phone Wal. 5000

Convenient Terms



Official Jewelers to
The Evening School

5 Edgewood Avenue

At Five Points

*"You Tried the Rest—
Now Try the Best"*

CALL J. R. SIMS AT

Lee Cleaners and Dyers

Plant and Office: 847-849 Lee St., S. W.

RAYmond 9263

Men's Wool Suits, Plain Street Dresses

3 for \$1.00

SUITS PRESSED 25c

FREE DELIVERY

Elliott's
Peachtree Studio

PHOTOGRAPHERS

Senior Photographers

Compliments of
Senior Class
1935

PAUL BURT

Offers . . .

Life Insurance
Retirement Incomes
Accident Insurance
Health Insurance
Disability Income,
which may be added to
Life Insurance and
Retirement Incomes.

1317 1st National Bank Bldg.
WALNUT 3220

Compliments
of
The
INTRA-MURAL
KEY

Pure as
Sunlight



9
MILLION
a day

The proof of its *purity* is in the testing. Twenty-two scientific tests for *purity*, covering every step in its preparation, safeguard this drink of natural flavors.

Coca-Cola Co., Atlanta, Ga.

Essolube Motor Oil

KEEPS ITS BODY
HAS LOW CONSUMPTION
RESISTS CONDENSATION
HAS LOW CARBON CONTENT

*An Extremely Economical
and Satisfactory Motor Oil*

STANDARD OIL COMPANY

INCORPORATED IN KENTUCKY

The Best Dressed Men Wear

SCHWOBILT
ESTABLISHED 1912 REG. U.S. PAT. OFF.
CLOTHES

The SCHWOB Company

91 Peachtree St., N. E. 177 Mitchell St., S. W.

Atlanta

Glover Soda Company

Sandwiches Drinks Candies
Cigars Cigarettes Tobaccos

Delicious Meals

Red Rock Building

Cor. Spring and Cain Sts.

Mason-Kominers Tire Co.

Independent Dealers

Fisk Tires

Exide Batteries

Walnut 6645 Spring and Harris Sts.

ATLANTA, GA.

The Tavern

The South's Most Unique
and
Charming Tea Room

625 Peachtree St., N. E.

ATLANTA, GA.

Compliments of

William C. Cantrell

ATTORNEY AT LAW

ATLANTA

Atlanta's Most Popular Place to Eat . . .

You'll Like Our Complete Chicken Dinner for Fifty Cents

*For Excellent Food, Prompt, Dignified Service,
Quiet, Pleasant Surroundings*

THE DAFFODIL TEA ROOM

MRS. MCREE

65½ Broad Street

ATLANTAN HOTEL

Compliments of

TED YON

ATLANTAN COFFEE SHOP

Mr. O. C. Hubert

Representing

GEORGIA POWER CO.

INMAN PARK BRANCH

Compliments of

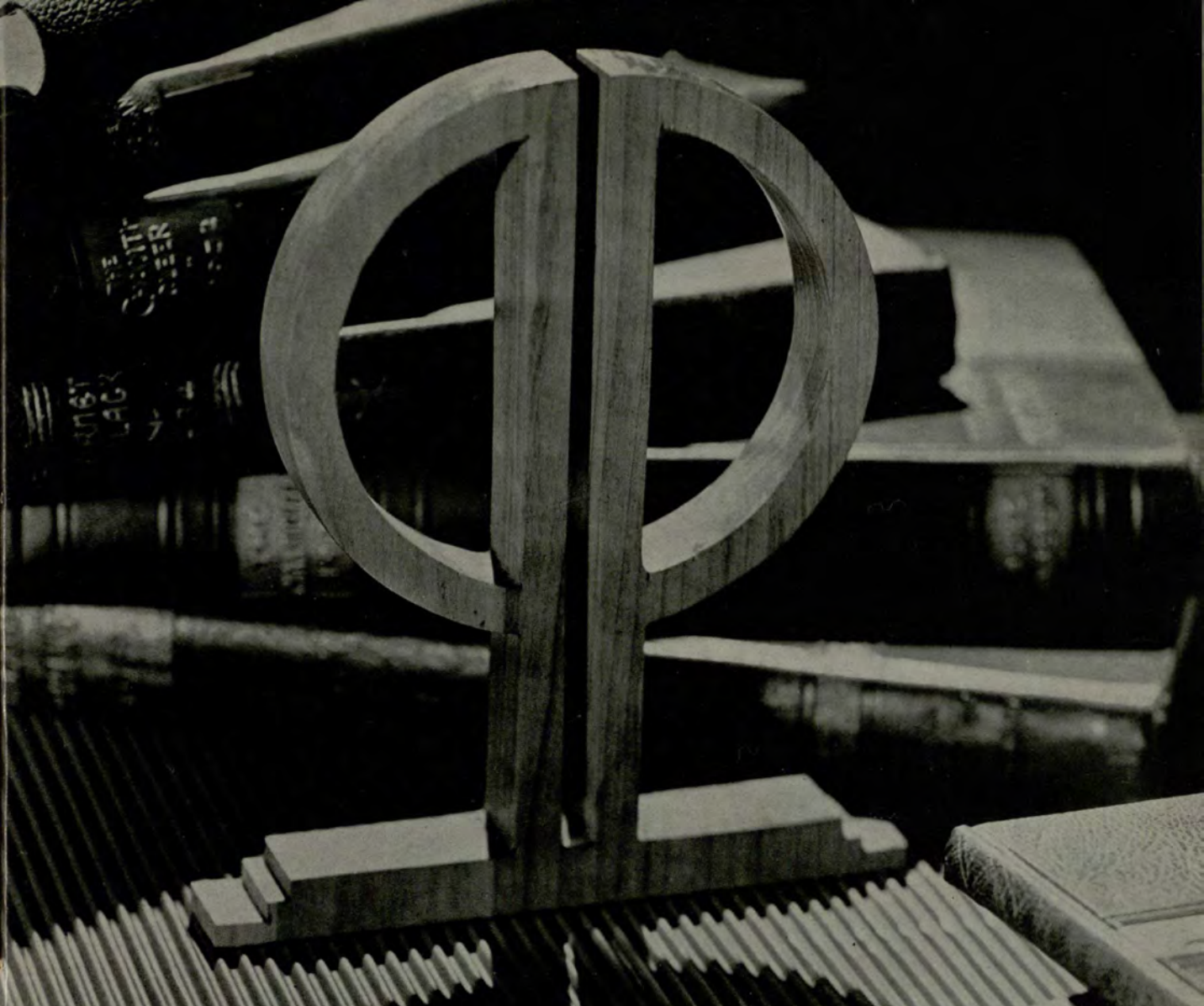
THE TEXAS COMPANY

FACULTY AND STUDENT LEADERS



F. M. Osteen
Lloyd C. Ginn
Bob Kimsey
H. R. Scrivener
Cliff Ray
Earl Styring
Gordon W. Owens
Charlie McKagen
A Friend
Eleanor Davis
Garnett Reinhardt
Chas. Dickson
Jack Turner
Sara Fitzpatrick
J. Thornton Flanigan
Joe L. Stradley
W. Scott Blackstock
Louis W. Corrigan
Jimmie Lacher
Bubba Hill
Kenneth Moss
Alvin Robertson
Elwood Amos
Tom North
Hilda Isakson
Maurice Strickland
Bob Lowe, Jr.
Carl A. Herbig
Guy Ward
Culver Caraway
Julian Price
Dean Dreyer
Jimmie Henderson
Phil Shuttleworth
Carl Pruitt
Elmer Trulove
Jack L. Chapman
Mildred Flurry
Louise Gunn

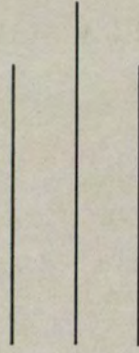
O. B. Cornelius
Estelle McKibben
Leon Moye
Emory Kinard
R. O. Elliott
Wilson Cash
Bill Powell
Millard Jenkins
T. M. McClellan
Winslow Porter
Ray Brandes
Ernest Barber
A Friend
Ed. Martin
Albert Clark
Charlie Elrod
Jerry Wing
Billy Johnson
Marion Mason
O'Connell Dougherty
Ewell Jackson
McDougall Evans
Embry P. Eve
"Cholly" Swinford
Winnie Paris
George Wing
Donald Clegg
Elizabeth Joiner
Tom Mason
Dot Guy
Jimmie Griffith
Tom Seals
Tilden Brooks
A Friend
Noah Warren
Miriam Saperstein
Lowell M. White
Dr. McIntosh Sparks
George Manners



★ THE MARK THAT
IDENTIFIES THE SOUTH'S
FINEST YEARBOOKS

PHOTO-PROCESS ENGRAVING CO.

115 - 119 LUCKIE STREET ★ ATLANTA GEORGIA



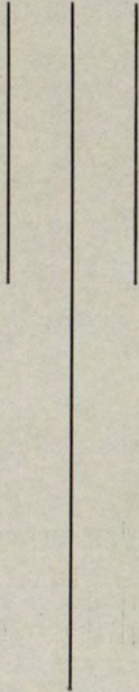
Printed By



Webb & Martin Inc.



Atlanta



AUTOGRAPHS

AUTOGRAPHS

