

11/10/1940



University System  
of Georgia

UNIVERSITY SYSTEM  
CENTER LIBRARY  
ATLANTA



~~398.7B  
N. 2010  
1940  
4.2~~

LIBRARY  
UNIVERSITY EXTENSION  
FULTON - ATLANTA

*The*  
NOCTURNE  
1940



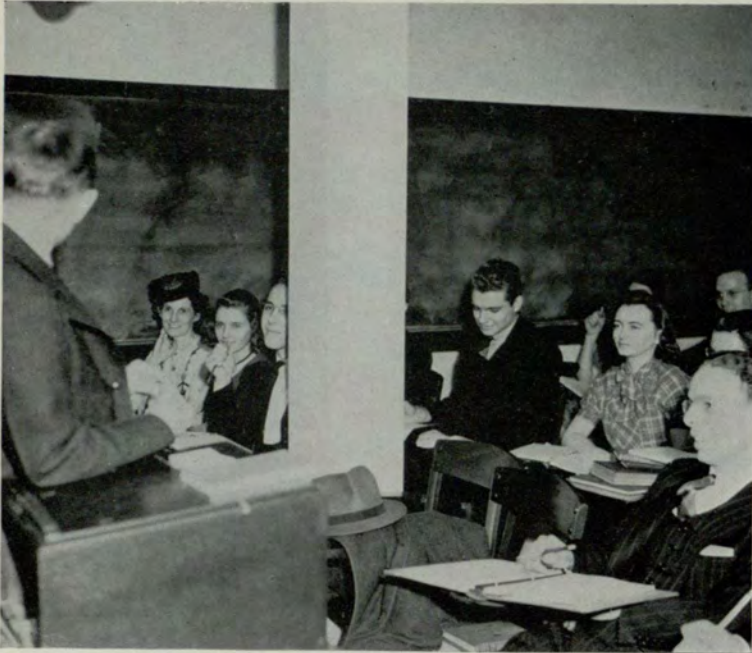
874 n n r e

YEARLY  
SOCIETY  
OF  
THE NINETEEN  
HUNDRED  
AND FORTY

# N O C T U R N E

Copyrighted By  
JOHN E. CASH . . . . . Editor  
CHARLES COTTON . . . . . Business Manager  
  
PUBLISHED BY STUDENTS OF GEORGIA EVENING COLLEGE





## FOREWORD *and* THEME

Twenty-six years ago, a few teachers and students met in three rooms of a down-town office building to mark the beginning of our GEORGIA EVENING COLLEGE. Since that time, our ALMA MATER has come far; from three rooms to our large and modern building; from a few students to nearly two thousand enrollment; from a school, small and unknown, to an institution that has gained national recognition. Many students have passed through our halls and classes going forth to meet the world better equipped to overcome its trials and hardships. These students have gone far and made names for themselves, as the students now in our midst will do.

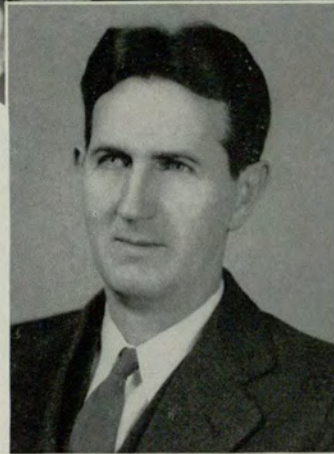
As we begin the Second Quarter of a Century for the GEORGIA EVENING COLLEGE, the staff thinks it fitting that the seventh edition of the NOCTURNE have as its theme—THE PROGRESS OF THE GEORGIA EVENING COLLEGE.

# DEDICATION

~~LD 1961  
G85-N6  
1940  
9.2~~

LD 1965  
N63  
1940  
C.2

To the men whose untiring efforts have made the GROWTH and PROGRESS of the EVENING COLLEGE possible, we respectfully dedicate this issue of the NOCTURNE—Our own Dr. Sparks and Mr. McClellan.



# *Contents*



THE COLLEGE



CLASSES



ACTIVITIES



FEATURES





S C H O O L

# ADMINISTRATION *and* FACULTY



DR. GEORGE M. SPARKS  
Director



THEODORE M. McCLELLAN  
Registrar and Business Manager

FRED W. AJAX

RICHARD C. BREWER

HUBERT E. DENNISON

H. B. ELLIOTT

E. H. EMORY

ELMER R. ENLOW

EDWIN H. FOLK

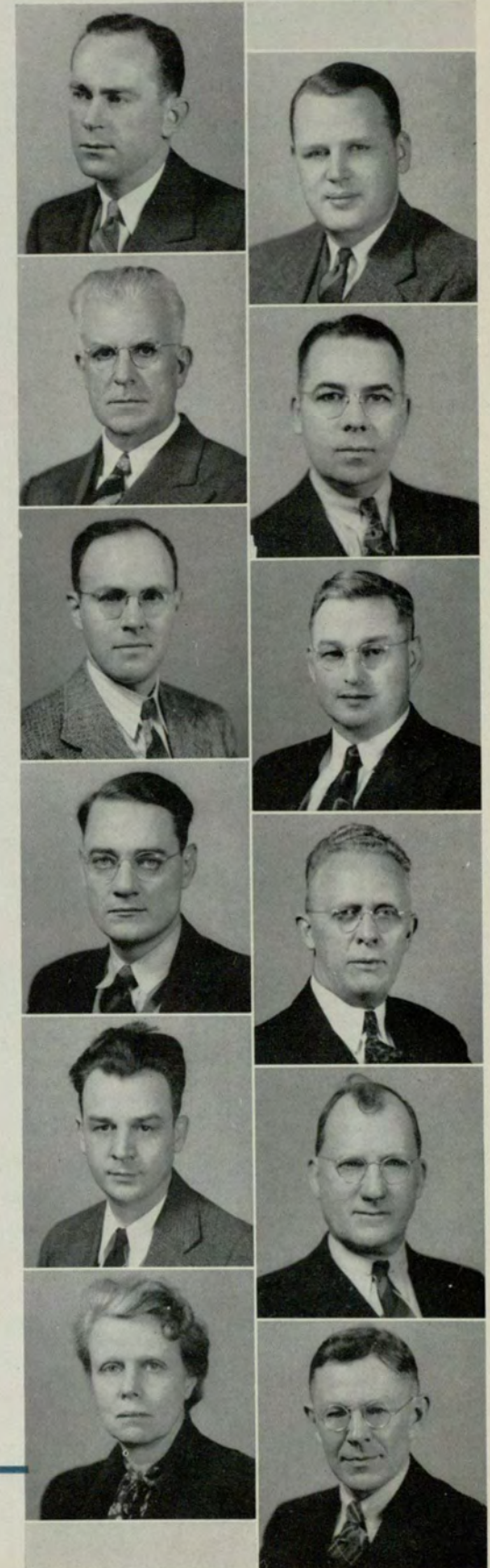
E. L. FLOYD

RALPH A. HEFNER

R. R. HOLLINGWORTH

MADELINE HOSMER

HAL HUSLEY





H. Reid Hunter      V. V. Lavroff      George Manners      J. E. Mayo      Mrs. Nell H. Trotter  
 Theo Vaughan      A. J. Walker      Noah Warren      W. S. Smith

## FACULTY ROLL

- F. W. AJAX, A.B., M.A., Emory University, University of Chicago.
- L. T. BATES, A.B., M.A., Emory University.
- C. R. F. BEALL, M.D., Vanderbilt University.
- R. C. BREWER, A.B., University of Kentucky, University of Wisconsin.
- J. C. BROWN, B.S.E.E., B.C.S., Georgia School of Technology, Georgia Evening College.
- E. G. CAMPBELL, A.B., M.S., Ph.D., Hiram College of Ohio, Perdue University, University of Chicago.
- W. C. CANTRELL, A.B., M.A., LL.B., University of Wyoming, Atlanta Law School.
- L. W. CHAPIN, A.B., M.A., Emory University, Harvard University, University of Chicago, University of North Carolina.
- R. A. CHRISTOPHER, B.S.C., University of Georgia.
- H. E. DENNISON, A.B., University of Tennessee, Graduate Work, University of South Carolina.
- H. B. ELLIOTT, B.C.S., M.S.C., C.P.A., Georgia School of Technology, University of Georgia.
- E. H. EMORY, A.B., B.S., Mercer University, Georgia School of Technology.
- E. R. ENLOW, A.B., M.A., Ph.D., Wheaton College, Emory University, Peabody College.
- E. L. FLOYD, A.B., M.A., LL.B., University of Georgia.
- E. H. FOLK, JR., A.B., M.A., University of South Carolina, Princeton University.
- MRS. A. G. GREGORY, A.B., B.M., Centenary College, Graduate Work, Centenary College.
- R. A. HEFNER, B.S., S.M., Ph.D., Roanoke College, University of Chicago.
- J. D. HOFFMAN, Music Director, Atlanta Conservatory of Music, Musical College of Chicago; Franc Prochovski, New York; Robert Clarke, St. Louis; Will-Ford Watters, Atlanta; William Claire Hall, Chicago.
- L. R. HOGAN, A.B., M.A., LL.D., Mercer University, University of Chicago, Columbia University.
- R. R. HOLLINGSWORTH, A.B., M.A., Ph.D., Emory University, University of California.
- MRS. J. B. HOSMER, A.B., Fine Arts Certificate, Washington University, St. Louis School of Fine Arts.
- HAL HULSEY, A.B., M.A., University of Georgia, Graduate Work, University of Georgia, Emory University.
- H. R. HUNTER, A.B., M.A., Ph.D., Duke University, Columbia University, Emory University, George Peabody College.
- V. V. LAVROFF, Junior College, Harbin, China, B.S.C., M.A., Georgia School of Technology, Emory University.
- W. P. LAYTON, Director of Physical Education, B.Ph., Emory University.
- J. N. LeCONTE, A.B., M.S., Ph.D., Emory University, University of North Carolina.
- B. E. LINDSEY, A.B., M.S.C., University of Kentucky, University of Georgia.
- HAMILTON LOKEY, A.B., LL.B., University of Georgia.
- W. F. LOZIER, A.B., LL.B., Columbia University.
- E. M. LUSINK, B.C.S., Georgia School of Technology, Graduate of Rochester Athenaeum Institute, Pupil of Edwin S. Siebert.
- GEORGE MANNERS, B.S.C., C.P.A., University of Georgia.
- T. M. McCLELLAN, B.S.C., M.S.C., Georgia School of Technology, Graduate Work, New York University.
- J. E. MAYO, A.B., M.A., C.P.A., Mercer University.
- CARL MAUELSHAGAN, A.B., M.A., Ph.D., University of Tennessee, University of Chicago, University of Minnesota.
- R. C. MOOR, B.C.S., University System of Georgia Evening College.
- J. E. ROUTH, A.B., Ph.D., Johns Hopkins University.
- H. O. SMITH, A.B., M.A., Harvard University, Emory University, Graduate Work, University of Georgia Evening College.
- WILLIAM SMITH, B.C.S., Georgia School of Technology.
- G. M. SPARKS, A.B., M.A., LL.D., Mercer University, England, Oxford.
- MRS. LINNIE TALLANT, R.N.
- NELL HAMILTON TROTTER, A.B., M.A., University of Arkansas, University of Wisconsin, Dean of Women.
- T. L. VAUGHAN, B.S., M.A., Clemson College, Graduate Work, Columbia University.
- A. J. WALKER, A.B., M.A., Ph.D., Emory University, Harvard University.
- KNOX WALKER, A.B., M.A., Mercer University, Columbia University.
- NOAH WARREN, B.S.C., M.A., C.P.A., Georgia School of Technology, Emory University.



# C L A S S E S



*The*  
**SENIOR  
CLASS**

OFFICERS

HENRY T. SMITH . . . . . President

LEONARD KUYPER . . . . . Vice-President

PICKETT HYNES . . . . . Secretary

EDWARD A. PIERCE . . . . . Treasurer





KATHARINE BAYNES

B.C.S

Rich's

MAMIE G. BOOTH

Sears, Roebuck and Company

B.C.S.

CALVIN WEEMS BOYD

$\Delta \Sigma \Pi$

Sears, Roebuck and Company

B.C.S.

Delta Sigma Pi, 1939-'40.

*Seniors*



JAMES L. BRANDES  
Δ Σ Π  
General Electric Company  
B.C.S.

Delta Sigma Pi, 1936-'40; Student Council, 1940; Inter-Fraternity Council, 1937.

TILDEN L. BROOKS  
Α Κ Ψ  
Atlanta Judicial Circuit  
B.C.S.

Alpha Kappa Psi, 1937-'40; Delta Kappa, 1935-'40; Governor Delta Kappa, 1937-'38; Venetian, 1934-'40; Intramural Key, 1937-'40; Theta Xi Zeta, 1937-'40; President Junior Class, 1938-'39; President Sophomore Class, 1934-'35; Representative Freshman Class, 1933-'34; Student Council, 1933-'35-'38-'39; Inter-Fraternity Council, 1934-'35-'37; Playcrafters, 1933-'35.

MRS. BARBARA COMBS BALL  
J. Allen Couch School  
B.C.S.



*Seniors*

# Seniors

PAULINE BURKS  
B.C.S.

LAURA MAE CAMPBELL  
B.C.S.  
Hilarian Club, 1939-'40.

JOHN EVERETT CASH  
A K Ψ  
The B. F. Goodrich Company  
B.C.S.

Alpha Kappa Psi, 1937-'40; Delta Kappa, 1938-'40; Venetian Society, 1938-'40;  
Speakers Club, 1938-'40; Student Council, 1938-'40; Nocturne Staff, 1938-'40,  
Editor-in-Chief, 1939-'40.







RUBIE CHAPMAN

Φ X Θ

Fulton County Board of Education  
B.C.S.

Phi Chi Theta, 1939-'40 — Crimson Key, 1939-'40.

JOHN BOND CLARK

Δ Σ Π

Parke-Davis and Company  
B.C.S.

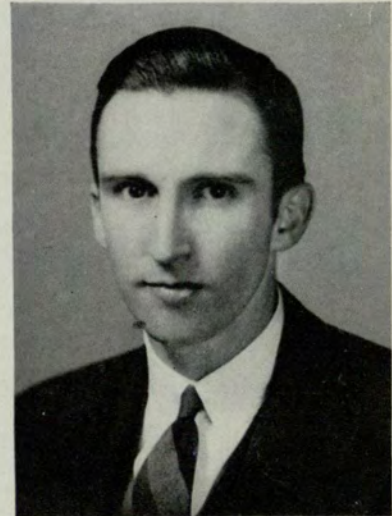
Delta Sigma Pi, 1936-'40, Historian, 1937-'38, Treasurer, 1939; Theta Xi Zeta, 1939-'40, Secretary, 1940; Intramural Key, 1939-'40, Secretary, 1940; Speakers Club, 1937-'40; Inter-Fraternity Council, 1938; Student Council, 1939; Credit Union, 1939-'40.

LOUIS CORRIGAN

Α Κ Ψ

American Express Travel Service  
B.C.S.

Alpha Kappa Psi, 1937-'40.



*Seniors*

# Seniors

JAMES HIXON DAVIS

Δ Σ Π

First National Bank

B.C.S.

Delta Sigma Pi, 1937-'40; Scribe, 1940; Speakers Club, 1938-'40, Vice-President, 1940; Delta Mu Delta, 1939-'40, President, 1940; Student Council, 1939-'40; Intramural Key, 1939-'40; Theta Xi Zeta, 1939-'40; Winner of Retail Credit Company Award, 1934-'35; Delta Mu Delta Scholarship Key, 1937-'38; Alpha Kappa Psi Medallion, 1938-'39; Most Intellectual Boy, 1938.

JOHN ROLAND DRISKELL

Α Κ Ψ

Yancey, Inc.

B.C.S.

Alpha Kappa Psi, 1935-'40; Student Council, 1938-'39; Evening Signal, 1939; Nocturne Staff, 1939-'40; Advertising Manager, 1939-'40.

JOHN B. ELLIS, JR.

Civil Aeronautics Authority

B.C.S.





AVALON THURXTON FLOWERS

Δ Σ Π

Commercial Union Assurance Company

B.C.S.

Delta Sigma Pi, 1939-'40; Glee Club, 1938-'40; Historian, 1939; Librarian, 1940;  
Intramural Key, 1939-'40; Student Council, 1939.

MARY MYRTICE FORD

DeKalb County Board of Education

B.C.S.

HOWARD H. GILBERT, JR.

Standard Oil Company

B.C.S.

Glee Club, 1936-'40; President, 1939-'40.



*Seniors*



HENRIETTA FITZPATRICK GREEN

Claude S. Bennett

B.C.S.

Signal Staff, 1938-'39, Editor-in-Chief, 1939; Student Council, 1938-'39; Debating Team, 1938-'39.

JAMES M. GRIFFITH

$\Delta \Sigma \Pi$

Ford Motor Company

B.C.S.

Delta Sigma Pi, 1935-'40; Venetian Society, 1935-'40; Basketball Team, 1935-'37; Tennis Team, 1939; Inter-Fraternity Council, 1935-'36; Student Council, 1935-'37, 1937-'40; Representative Sophomore Class, 1935-'36; President of Pre-Junior Class, 1936-'37; President of Student Body, 1939-'40.

J. WENDELL HARDWICK

Atlanta Paper Company

B.C.S.

*Seniors*



HAROLD S. HEMRICK

Δ Σ Π

Retail Credit Company

B.C.S.

Delta Sigma Pi, 1938-'40, Headmaster, 1939-'40; Speakers Club, 1938-'40; Intramural Key, 1938-'40, Student Council, 1939; Evening Signal Staff, 1938-'39, Associate Editor, 1939.

WALTER HENDERSON

Federal Reserve Bank

B.C.S.

BONNIE HUGHEY

University System of Georgia

B.C.S.

Playcrafters, 1938-'40.



*Seniors*

PICKETT HYNES

Φ X Θ

B.C.S.

Kappa Theta, 1937-'40, Corresponding Secretary, 1938-'39, Vice-President, 1939; Crimson Key, 1938-'40, Vice-President, 1938-'39; Hilarian Club, 1938-'40, Treasurer, 1939-'40; Phi Chi Theta, 1939-'40; Delta Mu Delta, 1939-'40, Secretary, 1939-'40; Student Council, 1937-'39; Inter-Fraternity Council, 1937-'40, President, 1938-'39; Nocturne Staff, 1939-'40, Associate Editor, 1939-'40; Secretary of Senior Class, 1939-'40.

MONA CAROLINE JACKSON

DeKalb County School System

B.C.S.

Student Council, 1940.

WILLATHEA JACKSON

Φ X Θ

University System of Georgia

B.C.S.

Phi Chi Theta, 1939-'40; Crimson Key, 1939-'40.





SYDNEY KITTRELL JOHNSON

A K Ψ

Western Electric Company

B.C.S.

Alpha Kappa Psi, 1934-'40, Treasurer, 1934, Secretary, 1935, President, 1936, Master of Rituals, 1937; Venetian Society, 1934-'37; Theta Xi Zeta, 1936-'37, Secretary, 1937; Intramural Key, 1936-'37, Vice-President, 1936, President, 1937; Speakers Club, 1936-'37; Business Club, 1937, Vice-President, 1937; Inter-Fraternity Council, 1936-'37; Student Council, 1936-'37, Vice-President, 1937; Vice-President Student Body, 1937; President Junior Class, 1937; Evening Signal Staff, 1935-'37; Nocturne Staff, 1937; Awarded Richard A. Hills Scholarship Trophy, 1935; Alpha Kappa Psi National Service Award, 1936; Delta Mu Delta Scholarship Key, 1936.

WILLIAM T. JORDAN, JR.

A K Ψ

Sinclair Refining Company

B.C.S.

Alpha Kappa Psi, 1937-'40; Chaplain, 1937-'38; Student Council, 1939-'40.

EDGAR G. KILPATRICK, JR.

Δ K

Dodson Printers Supply Company

B.C.S.

Delta Kappa, 1935-'40, Lieutenant Governor, 1937-'38, Master of Rituals, 1936-'37-'39-'40; Inter-Fraternity Council, 1938.



FIDELES KLOECKLER

Φ X Θ

General Food Sales Corp.

B.C.S.

Phi Chi Theta, 1938-'40, Vice-President, 1939-'40, Treasurer, 1938-'39; Crimson Key, 1938-'40.

LEONARD JACOB KUYPER

Δ Σ Π

Southern Railroad Company

B.C.S.

Delta Sigma Pi, 1934-'40, Headmaster, 1938-'39, Master of Ceremonies, 1938; Theta Xi Zeta, 1939-'40; Intramural Key, 1938-'40, President, 1939; Speakers Club, 1938-'40; Inter-Fraternity Council, 1938-'40; Student Council, 1937-'40, Treasurer, 1939-'40; Vice-President of Senior Class, 1939-'40.

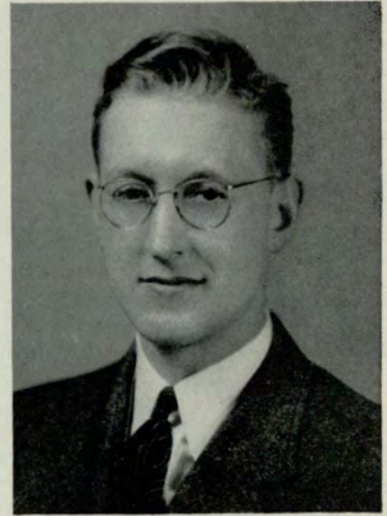
W. A. LEE

Α Κ Ψ

Morris Plan Bank

B.C.S.

Alpha Kappa Psi, 1934-'40, Master of Rituals, 1938-'39, Treasurer, 1937-'38; Vice-President of Freshman Class, 1934-'35; Student Council, 1935-'37, Treasurer, 1935-'36; Inter-Fraternity Council, 1937-'38; Speakers Club, 1934-'36; Nocturne Staff, 1935-'36.







BESSIE KATE McDONALD  
Fulton County School System  
B.C.S.

PRENTISS McINTYRE  
K Θ  
American Telephone and Telegraph Company  
B.C.S.

Kappa Theta, 1938-'40, Vice-President, 1939-'40, Treasurer, 1938-'39; Crimson Key, 1938-'40; Playcrafters, 1936-'37; Farmartia, 1939-'40.

LUTA DEKLE MITCHELL  
Δ Λ Σ  
White Electrical Construction Company  
B.C.S.  
Delta Lambda Sigma, 1938-'40, Sergeant-at-Arms, 1939, Vice-President, 1940; Student Council, 1940; Crimson Key, 1939-'40, Vice-President, 1939-'40; Hilarian Club, 1939-'40.



*Seniors*

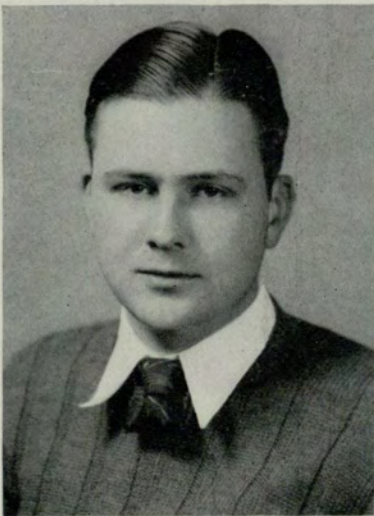
# Seniors

WILLIAM DAVID MORRIS  
G. N. Morris Furniture Company  
B.C.S.

THOMAS LAWTON NALLEY  
A K  $\Psi$   
White Provision Company  
B.C.S.

Alpha Kappa Psi, 1938-'40; Delta Kappa, 1936-'40, Lieutenant Governor, 1939-'40,  
Master of Festivities, 1938-'39, Secretary, 1937-'38; Student Council, 1938; Inter-  
Fraternity Council, 1940.

ROBERT MOORE PENLAND, JR.  
State Highway Board of Georgia  
B.C.S.





EDWARD A. PIERCE  
A K  $\Psi$   
DeVoe and Reynolds Company  
B.C.S.

Alpha Kappa Psi, 1937-'40; Venetian Society, 1937-'40; Intramural Key, 1938-'40, Treasurer, 1939-'40; Theta Xi Zeta, 1939-'40, Treasurer, 1939-'40; Evening Signal Staff, 1937-'39; Treasurer Senior Class, 1938-'40; Inter-Fraternity Council, 1938-'40.

FRANCES D. PIERCE  
 $\Delta \Lambda \Sigma$   
J. P. Allen and Company  
B.C.S.

Delta Lambda Sigma, 1935-'40, Sergeant-at-Arms, 1936-'37, President, 1938-'39; Hilarian Club, 1935-'40, Vice-President, 1939-'40; Inter-Fraternity Council, 1938-'40, President, 1939-'40; Playcrafters, 1935-'37; Evening Signal, 1935-'39; Nocturne Staff, 1936-'37.

THOMAS HOWELL PORTER  
Federal Prison Industries, Inc.  
B.C.S.



# Seniors

LEWIS ANDERSON RIDEN

A K  $\Psi$

Gulf Oil Corporation

B.C.S.

Alpha Kappa Psi, 1935-40, Treasurer, 1937-'38, Vice-President, 1938-'39, President, 1939-'40; Venetian Society, 1936-'40; Student Council, 1938-'39; Inter-Fraternity Council, 1939-'40, Vice-President, 1939-'40; Nocturne Staff, 1937-'40, Business Manager, 1938-'39.

MRS. BESSIE WALKER SCOTT

Atlanta School System

B.C.S.

EDGAR T. SCOTT

The Texas Company

B.C.S.





NELL SHROPSHIRE

Φ X Θ

Carithers-Wallace-Courtenay

B.C.S.

Phi Chi Theta, 1935-'40, President, 1939-'40, Recording Secretary, 1938-'39, Treasurer, 1937-'38; Hilarian Club, 1935-'40, Secretary, 1937-'38; Kappa Theta, 1938-'40; Inter-Fraternity Council, 1940; Secretary Sophomore Class, 1935-'36; Nocturne Staff, 1935-'36.

HENRY TURNER SMITH

A K Ψ

Southern Bell Telephone and Telegraph Company

B.C.S.

Alpha Kappa Psi, 1937-'40, Master of Ritual, 1939-'40; Theta Xi Zeta, 1938-'40, Treasurer, 1938-'39, President, 1939-'40; Intramural Key, 1938-'40, Secretary, 1938-'39; Speakers Club, 1935-'40, Secretary, 1936-'37, President, 1937-'38; Inter-Fraternity Council, 1937-'38; Student Council, 1938-'40, Vice-President, 1938-'39; Vice-President Junior Class, 1938-'39; President Senior Class, 1939-'40; Evening Signal Staff, 1936; Debating Team, 1936-'38, Manager, 1937; Secretary Alpha Kappa Psi Building Corporation, 1940.

ALEXANDER MARTIN STERLING

Johnson Manufacturing Company

B.C.S.



*Seniors*

D. LEE STOVALL  
Home Owner's Loan Corporation  
B.C.S.

IRENE STRICKLAND  
General Foods Sales Company, Inc.  
B.C.S.  
Awarded Delta Mu Delta Pre-Junior Scholarship Award, 1938.

KAY TABOR  
 $\Delta \Lambda \Sigma$   
Walker Electrical Company  
B.C.S.  
Delta Lambda Sigma, 1938-'40, President, 1939-'40, Secretary, 1939; Crimson Key, 1939-'40; Hilarian Club, 1938-'40, Treasurer, 1938-'39; Inter-Fraternity Council, 1939-'40.





JOEL TURNER

Δ K

Sears Roebuck and Company

B.C.S.

Delta Kappa, 1937-'40.

LEON ROSCOE WALKER

Δ Σ Π

Dinkins-Davidson

B.C.S.

Delta Sigma Pi, 1936-'40, Master of Festivities, 1938-'39; Junior Warden, 1939-'40; Speakers Club, 1938-'40; Student Council, 1938-'39; Chairman of Debates, 1938-'39; Chairman of Annual Banquet, 1938-'39.

DONALD KNOX WHITE

Α K Ψ

University System of Georgia

B.C.S.

Alpha Kappa Psi, 1936-'40; Venetian Society, 1936-'40, Historian, 1938, President, 1939-'40; Student Council, 1937-'39; President of Sophomore Class, 1937; Inter-Fraternity Council, 1939-'40; Intramural Key, 1939-'40; Theta Xi Zeta, 1939-'40; Glee Club, 1935-'37.

*Seniors*



WINIFRED WINGO  
B.C.S.

JAMES ZAMBOUNIS  
B.C.S.

## SENIOR CLASS ROLL

ALLING, MISS K. WILLIS  
BARBER, MR. W. E., JR.  
BARNETT, MRS. AGNES B.  
BAYNES, MISS KATHARINE  
BEAN, MRS. KATE RUTH  
BOOTH, MISS MAMIE GRACE  
BOYD, MR. WEEMS  
BRANDES, MR. JAMES L.  
BROOKS, MR. TILDEN L.  
BURKS, MISS WILLIAM P.  
BUSSEY, MISS VIRGINIA L.  
CASH, MR. JOHN E.  
CHANCE, MRS. MATTIE LEE M.  
CHAPMAN, MISS RUBY  
CHRISTIAN, MISS J. CLAIRE  
CLARK, MR. JOHN B.  
CLARKE, MISS ETHEL LEE  
CLARKE, MISS MIRIAM J.  
COHEN, MR. BERNARD W.  
CORBITT, MR. HUBERT W.  
CORRIGAN, MR. LOUIS W.  
CUNNINGHAM, MISS A. MAY  
DAVIS, MR. JAMES H.  
De VORE, MRS. RUBY B.  
DRISKELL, MR. JACK R.  
ELLIS, MR. J. B., JR.

FLOWERS, MR. A. T.  
FORD, MISS MARY M.  
FOURANCE, MISS L. Y.  
FREEMAN, MRS. MARY H.  
GILBERT, MR. H. H., JR.  
GREEN, MISS HENRIETTA F.  
GRIFFITH, MR. JAMES M., JR.  
HARDWICK, MR. JAMES W.  
HORD, MISS JEWEL C.  
HUNT, MISS ELIZABETH  
HYNES, MISS PICKETT  
JORDAN, MR. W. T., JR.  
JORDAN, MR. CARL M.  
KILPATRICK, MR. E. G., JR.  
KLOECKLER, MISS FIDELES  
KUYPER, MR. LEONARD J.  
McCLUNG, MR. K. AUSTIN  
McCLURE, MRS. ALFRED  
McDANIEL, MISS BESSIE  
McINTYRE, MISS PRENTISS  
MITCHELL, MISS LUTA D.  
MITCHELL, MISS NEDRA V.  
MORRIS, MR. WILLIAM D.  
NALLEY, MR. T. L.  
PENLAND, MR. ROBERT, JR.  
PIERCE, MR. ED. A.

PIERCE, MRS. FRANCES D.  
PORTER, MR. THOMAS H.  
PURDIE, MR. D. H.  
RIDEN, MR. LEWIS A.  
ROGERS, MISS ADDIE M.  
SANDIFER, MR. MORGAN A.  
SCOTT, MRS. BESSIE W.  
SCOTT, MR. E. T.  
SHROPSHIRE, MISS NELL  
SIEGEL, MR. ABRAM  
SMITH, MR. HENRY T.  
STERLING, MR. A. MARTIN  
STOVALL, MR. DAVID L., JR.  
STRADLEY, MR. JOSEPH L.  
STRICKLAND, MISS IRENE  
STROOP, MR. DONALD J.  
TABOR, MISS KAY  
TROUTMAN, MR. JOHN F.  
WHITE, MR. DONALD K.  
WILLIAMS, MR. ROBERT G.  
WILLIAMSON, MR. GROVER C., JR.  
WINGO, MISS WINIFRED EDNA  
WORD, MRS. MYRTIS D.  
WRIGHT, MR. ERNEST ELWOOD, JR.





The  
JUNIOR  
CLASS

OFFICERS

- JOE RHYNE . . . . . President
- CHARLES COTTON . . . . . Vice-President
- HOMER T. BREWER . . . . . Secretary
- LOIS DOZIER . . . . . Treasurer



*Juniors*

*Juniors*

REINALDO ABIEU



WILLIAM H. ALLEN

EMMA SUE BAIRD



P. STANLEY BOWBEN

HOMER T. BREWER



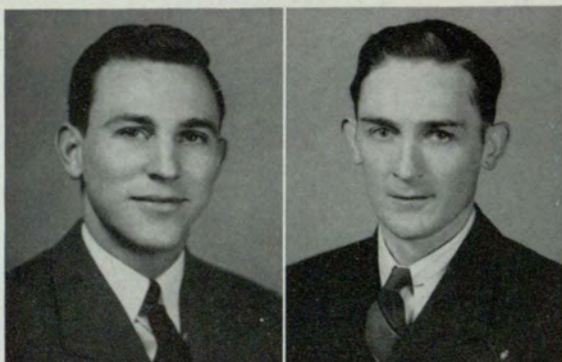
DEAN BROOME

WALTER A. BUCHANAN



OTIS L. CHILDS

# Juniors



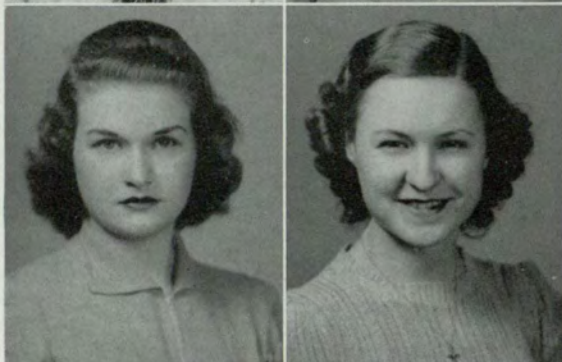
CHARLES COTTON

CHARLES DARNELL



LOIS DOZIER

FRANCES GORMAN



MARY GORMAN

VIOLA HARRIS



ELIZABETH HARRISON

VIRGINIA HEMRICK

# *Juniors*

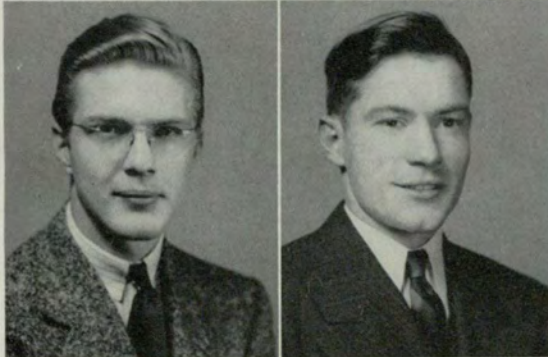
LENA RUTH LAWRENCE

CHARLES LESLIE



TOM LUCK

CHARLES MARTIN



FLORENCE MILLAR

ROY B. MILLER



RAYMOND MITCHELL

EUGENIA O'BRYAN



# Juniors



LONNIE OLIVER

POLLY RAMSEY



JOE REDWINE

JOE RHYNE



BERNICE E. SMITH

GILBERT STOCKTON



HAROLD TABOR

JULIETTE TODD

TOM TURNER

HELEN VEAL



FRED WILKINSON

FRED WINDHAM



W. C. WOMBLE



## JUNIOR CLASS ROLL

Abreu, Mr. Reinaldo  
 Adams, Mr. C. Ross  
 Adams, Mr. Jack M.  
 Allen, Mr. W. Heath  
 Arnold, Mrs. Elizabeth J.  
 Baird, Miss Emma Sue  
 Barnes, Miss Frances B.  
 Beasley, Miss Shirley K.  
 Berry, Miss Pauline S.  
 Bowden, Mr. P. Stanley  
 Brewer, Mr. Homer T.  
 Brown, Mr. Stephen R.  
 Buchanan, Mr. Walter A.  
 Butzon, Mr. Hans H.  
 Campbell, Miss Laura M.  
 Cates, Mr. W. E.  
 Childs, Mr. Otis L., Jr.  
 Cotton, Mr. Charles E.  
 Darden, Mrs. L. White  
 Darnell, Mr. Charles T., Jr.  
 Givens, Miss Mary Eugenia  
 Gorman, Miss Frances N.

Gorman, Miss Mary  
 Gregory, Mr. F. S.  
 Hamilton, Miss Nancy E.  
 Hughey, Miss Bonnie M.  
 Kent, Mr. Harry W.  
 Lee, Mr. William A.  
 Leslie, Mr. Charles H.  
 Logue, Miss Mary  
 Longino, Mr. Dick R.  
 McCurdy, Miss Myrtice  
 Luck, Mr. Thomas R.  
 Mathews, Miss Bernice  
 Merlin, Miss Libbie  
 Miller, Mr. Roy B.  
 Nicholson, Mr. Julian  
 Oliver, Mr. Lonnie  
 Osborn, Miss Nelle M.  
 Perry, Mr. Cecil C.  
 Phillips, Mrs. Annia  
 Pierce, Mrs. Frances  
 Pittman, Miss Mary L.  
 Ramsden, Miss Elizabeth

Ramsey, Miss Sara F.  
 Ratterree, Mr. C. L.  
 Redwine, Mr. Joseph, Jr.  
 Rhyne, Mr. Joseph S.  
 Riddick, Miss Callie J.  
 Shelnett, Mr. Dumas B.  
 Smith, Mr. Bernice E.  
 Stinchcomb, Mr. Wilbur  
 Streyer, Mr. William E.  
 Tabor, Mr. Harold  
 Taylor, Mrs. Kate W.  
 Thornton, Mr. H. E.  
 Luck, Mr. Tom R.  
 West, Miss Sarah D.  
 Wheelchel, Miss Dorothy  
 White, Mr. Wilbur J.  
 Wiley, Mr. James T.  
 Wootan, Mr. Luther T.  
 Wright, Mr. Jack K.  
 Zambounis, Mr. James A.

*The*  
**PRE-JUNIOR  
CLASS**

OFFICERS

- \*FRANK CARTER . . . . . President  
\*WALTER CRUMBIE . . . . . Vice-President  
JAMES WELCH . . . . . Secretary  
MARTHA WHIGHAM . . . . . Treasurer



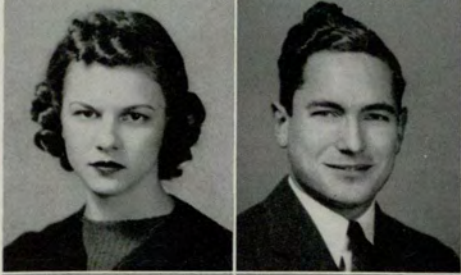
\*PHOTOS NOT AVAILABLE

*Pre-Juniors*



HOWARD ALLISON

BUFORD DEAN BATTLE



FRANCES BLACKSTONE

ERNEST BOLEN



W. LEWIS BOST

JOAN BRIGGS

ELEANOR CHESNUT

EDWIN M. CLARK



HELEN DAVIDSON

HAROLD DUNCAN







ARTHUR G. FRENCH

MRS. ARTHUR G. FRENCH



CLAIRE HAMMOND

RUBY HARPER



BOOTS HOAGE

ESSIE MAE HOUSE

C. G. HUEY

SUE HUTCHESON



JEANNE JOHNSON

CHARLES JOHNSON



*Pre-Juniors*

C. BURT JORDAN

ED. KEEN, JR.



VERA KILLINGSWORTH

FRANCES MANLEY



MRS. CLAIRE G. MANNERS

LOUISE MARCHMAN



EVELYN MATHIS

JAMES C. MOORE



GENEVIEVE MURRELLE

NELLE OSBORN

*Pre-Juniors*



ELIZABETH RAMSDEN

FORD RIVES



EMILY ROBERTS

JAMES B. SANDERS



RICHARD C. SEIGNIOUS

MARIE LOUISE SHERAM

LEO STILLMAN

BILL THOMAS



MARTHA TUCKER

JERRY E. UPCHURCH



*Pre-Juniors*



Clarence Watkins

James Welch  
Bob Winfree

Martha Whigham  
Macon Worthen

Hazel Wilder

## PRE-JUNIOR CLASS ROLL

Amato, Mr. Morris  
Ball, Mr. Jack T.  
Battle, Mr. Buford Dean  
Benefield, Mr. J. G., Jr.  
Binford, Miss Ydoine  
Black, Mr. James N.  
Black, Miss Melrose  
Bolen, Mr. Ernest  
Bost, Mr. W. Lewis  
Bowen, Mr. Clyde T.  
Bowman, Miss L. Lavan  
Brandon, Miss Ethel V.  
Briggs, Miss Joan  
Bromberg, Mr. William  
Brooks, Miss Nelia B.  
Burroughs, Mr. Luther P.  
Carlton, Miss Elizabeth  
Carswell, Mr. J. H.  
Chesnut, Miss M. Eleanor  
Clark, Mr. Edwin M.  
Cocke, Mr. Isaac P.  
Coddling, Mr. Jack L.  
Crawford, Miss Frances C.  
Dozier, Miss Lois  
Dozier, Mr. Roger B.  
Dreger, Mr. John S.  
Duncan, Mr. Harold O.  
Elrod, Mr. Roy O.  
Garner, Mr. Robert A.  
Gratlin, Mr. Eugene O.  
Freeman, Miss Eva Vance  
Hanna, Mr. Jeff  
Hardin, Mr. George D.  
Harper, Miss Ruby May  
Harris, Miss Frances V.  
Higgs, Mr. Owen Jackson  
Hoage, Miss Lucie R.  
Holcombe, Miss Merle E.  
Hopkins, Mr. J. Neil

Howse, Miss Essie Mae  
Huey, Mr. C. G.  
Hutcheson, Miss V. Sue  
Inman, Mr. Frank S.  
Jacobs, Mr. William C.  
Jobson, Mr. Fred H.  
Johns, Mr. Will F.  
Johnson, Miss Jeanne  
Johnston, Mr. C. A.  
Johnston, Mr. Charles  
Kennedy, Mr. Louis K.  
Killingsworth, Miss Verona  
Kirtley, Mr. J. M.  
Lawrence, Miss Lena Ruth  
Lumms, Mr. Robert H.  
Lycett, Mr. Henry H.  
McClam, Mr. Warren D.  
McColl, Mr. Frederick R.  
McDonald, Miss Rosalie  
McDade, Miss Dorothy L.  
MacMillan, Miss Jerry  
Malcolm, Mr. Owen Hurst  
Manley, Miss Frances O.  
Mann, Mr. Joseph Louie  
Manners, Mrs. Claire G.  
Marchman, Miss Louise F.  
Martin, Mr. Charles T.  
Mathis, Miss Evelyn  
Merrill, Mrs. Homer S.  
Miles, Mr. Ewing  
Moore, Mr. James Coley  
Moore, Mrs. James Coley  
Murrelle, Miss Genevieve  
Niblack, Mr. Tom M.  
O'Shea, Mr. Nicholas A.  
Pitts, Mr. Marshall Conley  
Purdie, Miss Hazel  
Ranta, Miss Ilma  
Reilly, Mr. Raymond Leon

Rives, Mr. Glenn Ford  
Roberts, Miss Emily L.  
Roberts, Miss Mary E.  
Roberts, Mr. William E.  
Rogers, Mr. Arthur Louis  
Rogers, Miss Beth F.  
Sanders, Mr. H. Gartrell  
Sanders, Mr. James B.  
Saye, Mr. Ralph A.  
Seignious, Mr. Richard C.  
Sheram, Miss Marie Louise  
Shutze, Mr. Edward B.  
Smith, Mr. Bartow Wynn  
Smith, Mr. Earle P.  
Sowell, Miss G. Louise  
Spivery, Mr. Albert Guy, Jr.  
Sticha, Miss Anne M.  
Stillman, Mr. Leo, Jr.  
Stockton, Mr. Gilbert M.  
Turner, Mr. Leslie Peyton  
Turner, Mr. Thomas A.  
Upshaw, Miss Bertha Dean  
Venev, Miss Helen Frances  
Warren, Mr. Kermit G.  
Watson, Miss Lureese Ann  
Watta, Mr. Victor H.  
Welch, Mr. James P.  
Whatley, Mr. Jerome S.  
Wheeler, Miss Erlene  
Whigham, Miss Sara Martha  
Wilder, Miss Hazel  
Wiley, Mr. James T.  
Windham, Mr. Fred  
Winfree, Robert W.  
Womble, Mr. William C.  
Zink, Mr. Virgil Davis



*The*  
**SOPHOMORE  
CLASS**

OFFICERS

JIM FREEMAN . . . . . President

\*CLIFFORD ZIMMERMAN . . . . . Vice-President

RUTH ISAKSON . . . . . Secretary

GEORGE BECKHAM . . . . . Treasurer



\* PHOTO NOT AVAILABLE

BETTY BEAVERS

GEORGE S. BECKHAM



ARTHUR DUDLEY BELL

LILLIAN BLACK



MELROSE BLACK

FRED H. BRANAN



MAY F. CASH

JOHN A. CASON



EDNA CAWTHON

L. A. DAVIS, JR.

*Sophomores*

# Sophomores

MARGARET L. DODGE

GEORGE R. EDWARDS



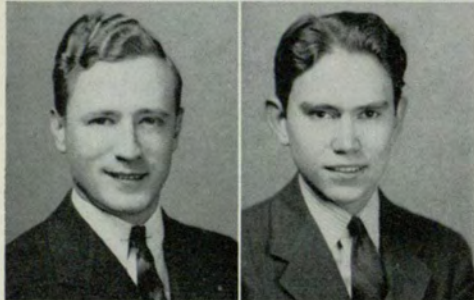
DOROTHY ESCOTT

SARA NELL FAGAN



MARY FARMER

HENRY SIDNEY FARRAR



SAM FRANKLIN

WILLIAM FREDERICK



JIM FREEMAN

ALDO GARONI

# Sophomores



ADA M. GRANT

BOB GRIFFITH



BILL GUERIN

DOROTHY HARRISON

RUTH ISAKSON

FRANCES HENDRICK



RUTH JACKSON

CHARLES M. JOHNSTON



ALBERT JONES

INEZ KITCHENS

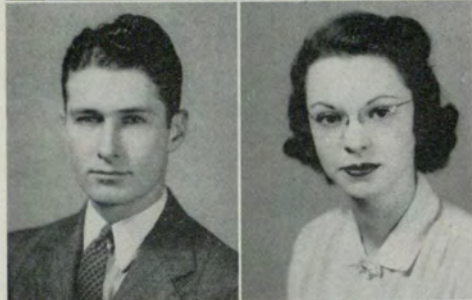






RICHARD E. LANDIS

MANSFIELD LATIMER



LANSING MURPHY

VERA MURRAY



RAYMOND O'KELLEY

CAROLINE REID

O. C. ROBBINS

ROBERT K. SIMS

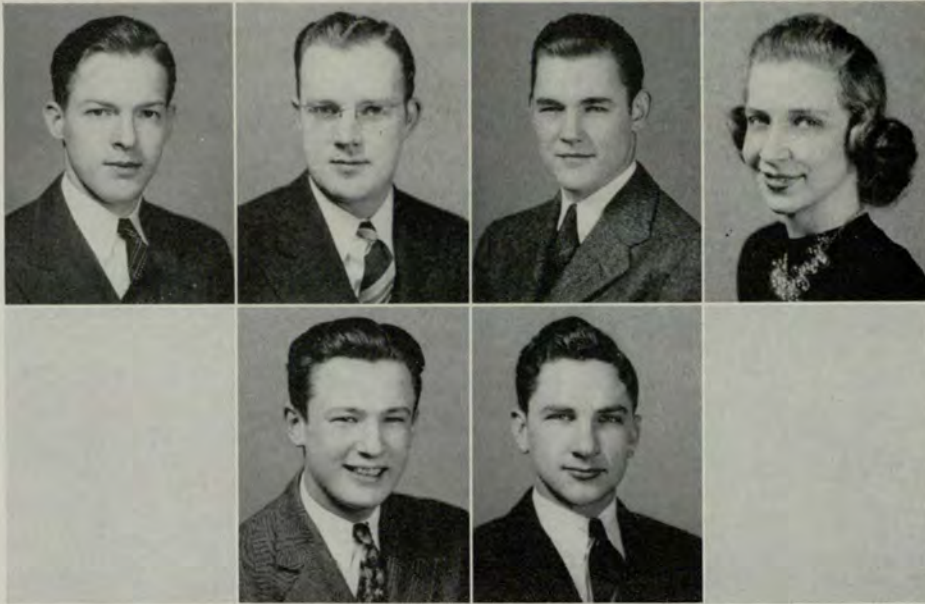


MARY KATHERINE SMITH

SUSAN SMITH



*Sophomores*



Waldo Starr

Harold Still  
Ed Withorn

Roy C. Wicker  
Kenneth Zimmerman

Virginia Wise

## SOPHOMORE CLASS ROLL

Allen, Mr. W. F.  
Allison, Mr. J. H., Jr.  
Askew, Miss Mabel E.  
Bailey, Mr. I. J.  
Banks, Mr. Marshall M.  
Beall, Mr. S. Dick  
Bell, Mr. Arthur Dudley  
Bickford, Mr. Bob  
Bledsoe, Mrs. Edith H.  
Bramblett, Mr. R. E.  
Branan, Mr. Fred H.  
Branch, Mr. Henry R.  
Brandes, Mr. Robert O.  
Brooks, Mr. Thomas W.  
Brown, Mr. Isaac C.  
Brown, Mr. Jack T.  
Burge, Mr. W. Lee  
Brooks, Mr. Thomas W.  
Byrd, Mr. Marvin O.  
Carter, Mr. Frank L.  
Cash, Miss May F.  
Cason, Mr. John A.  
Cason, Miss Martha Guard  
Cawthon, Miss Edna Hulette  
Cole, Mr. Robert Maurice  
Connelly, Mr. Harrell M.  
Cumbie, Mr. Walter P.  
Dale, Mr. Robert Merritt  
Dalton, Mr. Bob T.  
Davidson, Miss Helen C.  
De Loach, Mr. William M.  
Dodge, Miss Margaret L.  
Eaves, Mr. John W.  
Elliott, Mr. Joseph N.

Ellis, Miss Augusta  
Embry, Mrs. Martha Young  
Enlow, Mr. David Roland  
Fagan, Miss Sara Nell  
Farmer, Miss Mary Evelyn  
Farrar, Mr. Henry Sidney  
Ferrell, Mr. Robert Bennett  
Franklin, Mr. Sam Owen  
Frederick, Mr. Wilbur W.  
Freeman, Mr. James L.  
Futrelle, Miss Alice  
Garoni, Mr. Aldo E.  
Grant, Miss Ada M.  
Griffith, Mr. Robert W.  
Guerin, Mr. William R.  
Hamilton, Mr. Frank E.  
Hammond, Miss Claire E.  
Hamric, Mr. Manly D.  
Harrison, Miss Dorothy  
Henderson, Mr. H. C.  
Hendrick, Miss M. Frances  
Hill, Miss Rebecca  
Hoffman, Miss Anne  
Hartwell, Mr. Roy V., Jr.  
Hunt, Mr. Charles M.  
Hurt, Miss Mary R.  
Isakson, Miss Ruth E.  
Jackson, Mr. Clyde Howard  
Johnson, Miss Susie B.  
Jones, Mr. Albert Lee  
Keen, Mr. Edward F., Jr.  
Key, Mrs. Carolyn C.  
Kinney, Mr. Alfred  
Latimer, Mr. Mansfield

Levy, Mr. Jack Ellis  
Long, Mrs. Ernestine B.  
Longino, Mrs. James H.  
McAllister, Mr. John M.  
Mallory, Mr. Samson L.  
Montgomery, Mr. Harold A.  
Moore, Mr. Bill Frantz  
Murphy, Mr. Elbert Lansing  
Murray, Miss Vera Mae  
O'Dell, Mr. Worth P.  
Penick, Mr. Clay W., Jr.  
Perex, Mr. Joseph J.  
Prendergast, Mr. John Joe  
Reynolds, Mr. Charles N.  
Richards, Mrs. Evelyn H.  
Robbins, Mr. Oscar C.  
Rodgers, Mr. Fletcher G.  
Rodgers, Miss Mary G.  
Rodgers, Miss Ruth Ann  
Schwartz, Mr. Leonard  
Schwartz, Mr. Raymond M.  
Shelnutt, Mr. Dumas B.  
Shelton, Miss Mary Elizabeth  
Sims, Mr. Robert K.  
Smith, Miss Mary Katherine  
Smith, Mr. Robert Taylor  
Smith, Miss Susan  
Spurgeon, Mr. Forest C.  
Starr, Mr. Waldo B.  
Steele, Miss Kathleen  
Stewart, Miss Frances N.  
Still, Mr. Edward Harold  
Suggs, Mr. Rufus L.

Summers, Mr. Chester Howard, Jr.  
Tanner, Mr. S. D., Jr.  
Tarpley, Miss Mabel Claire  
Thomas, Mr. William Jay  
Thompson, Mr. J. Carl  
Thornton, Mr. H. E.  
Tomberlin, Mr. George E.  
Tucker, Mrs. Charles J.  
Tucker, Miss Martha Virginia  
Tucker, Miss Mary Agnes  
Turner, Mr. Morris  
Upchurch, Mr. Jerry E.  
Vaughan, Mr. Morgan Dixon  
Wells, Mrs. Cathleen S.  
West, Miss Tillie Virginia  
White, Mr. C. L.  
Whited, Miss Henrietta  
Whitlock, Miss Joel Carlyle  
Wicker, Mr. Roy Cason  
Williams, Miss Sarah Elizabeth  
Williamson, Miss Nell  
Wills, Mr. Lewis Clayton  
Wingfield, Mr. Alvin, Jr.  
Winter, Mr. Rogers, Jr.  
Wise, Miss Virginia  
Withorn, Mr. Edward William  
Young, Mr. John Charlton  
Zimmerman, Mr. Clifford B.  
Zimmerman, Mr. Kenneth R.



*The*  
**FRESHMAN  
CLASS**

OFFICERS

- LEE BURGE . . . . . President  
WALLACE NORRIS . . . . . Vice-President  
ELSIE SMITH . . . . . Secretary  
FRANK DiCHRISTINA . . . . . Treasurer

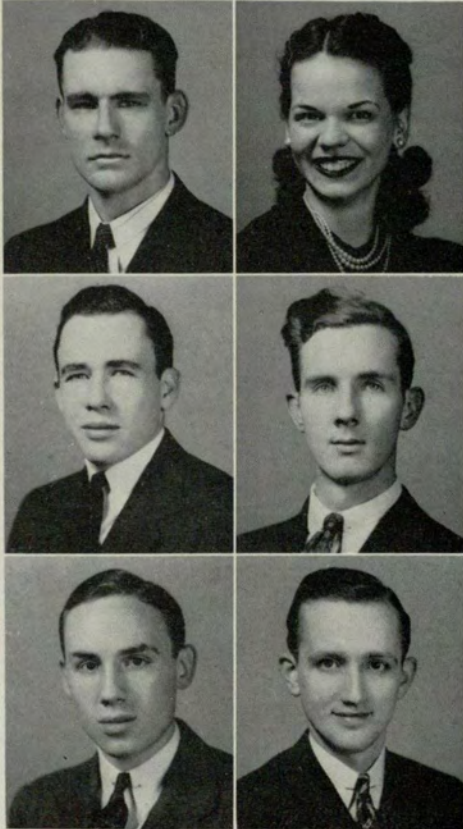
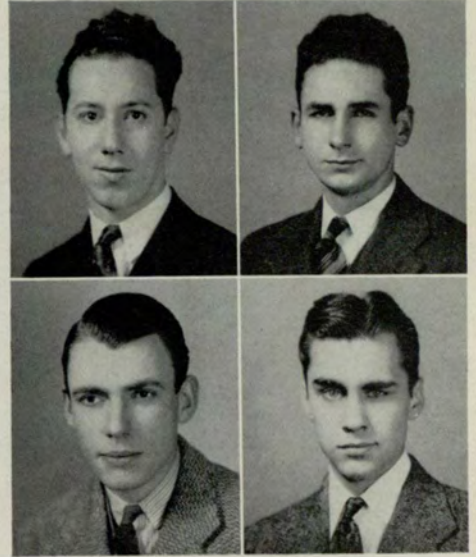


JAKE ALHODEFF

HERMAN L. ALLEY

G. M. ALSPAUGH

DON BARBER



RICHARD BENNETT

MARGARET BARNAL

BILL BORDEN

CHARLES BOWLING, JR.

W. HAROLD BRYAN

HOGAN F. BUFORD

*Freshmen*

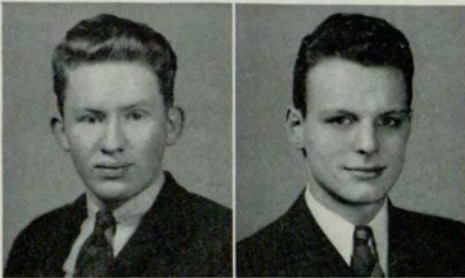
# Freshmen

LEE BURGE

MARY CALLAWAY

MARTHA G. CASON

S. D. CHERRY, JR.



FRANK W. CLOUDT

JOHN H. COX



KATHLEEN COX

ELIZABETH CRAIG



SARA MAE CROCKETT

SARA CRUMLEY

# Freshmen



ANNA CURTIS

MARJORIE DEAN



FRANK De CHRISTINA

JAMES EDWARDS

LIBRARY  
UNIVERSITY EXTENSION  
TRIPPER - ATLANTA

JACK EWING

JACK FENDER



HARRY T. FENN

VADIE FLEMING



DON FLOYD

BILL FOREMAN





BETTY GODWIN

FRANCES GRIER



JEAN HENSLEE

MARIAN KESSLER

AL KUETTNER

JOHN McCOLLUM



MARY McDONALD

JAMES McNADD



WALLACE MATTIESON

GEORGE MEDCALF



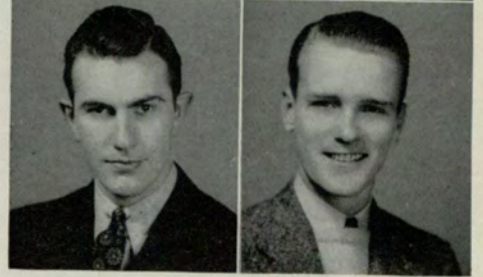
*Freshmen*

JEAN MILLARD

EDWARD C. MILLIGAN

WALLACE NORRIS

H. KENNETH PECKHAM



BEN F. PERRY

SARAH PICKETT



RUTH PITTARD

CECIL POOL



O. C. PUCKETT

MARY SHELTON

*Freshmen*





GEORGE W. SIMMONS

DOROTHY E. SIMPKINS



CARL SIMPKINS

ELSIE SMITH



HENRY M. SMITH

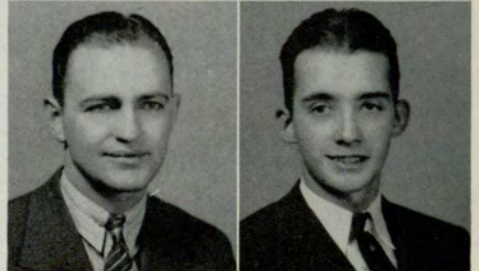
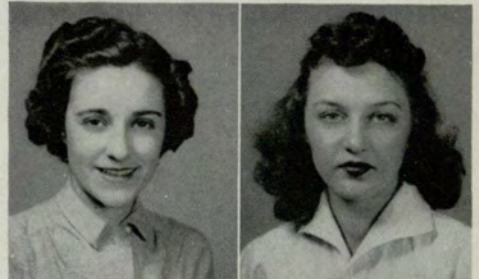
EDWARD J. SPEIR

DOROTHY STRANGE

DOROTHY TOWNSEND

McCOY WHITE

CECIL WILLIAMS



*Freshmen*



Harriett Williams



Robert Williams



Y. E. Wright

## FRESHMAN CLASS ROLL

Abraham, Mr. Thomas J.  
 Adams, Miss Drusilla R.  
 Adams, Mrs. Miriam T.  
 Alhadeff, Mr. Jake  
 Allen, Miss Elizabeth  
 Alley, Mr. Herman L.  
 Alspaugh, Mr. G. M., Jr.  
 Ashmore, Mr. Hicks H.  
 Baer, Mr. Howard L.  
 Baker, Mrs. Jane D.  
 Banks, Mr. Marshall M.  
 Barlow, Miss Jean  
 Barnes, Mrs. Louise R.  
 Barron, Miss Mary H.  
 Ball, Mr. John S.  
 Batchelor, Mr. Hugh T.  
 Beavers, Miss Betty A.  
 Beckham, Mr. George Shieden  
 Benator, Mr. Morris V.  
 Bennett, Mr. Richard  
 Black, Miss Lillian L.  
 Bledsoe, Mr. L. Jack  
 Bowling, Mr. Charles C., Jr.  
 Brice, Mr. James H.  
 Brooks, Miss Mary C.  
 Broome, Mr. Sherwood M.  
 Brown, Mr. Clarence R.  
 Brown, Mr. E. M.  
 Brundage, Mr. Don J.  
 Bryan, Mr. W. Harold  
 Buchanan, Mr. Leslie C.  
 Buford, Mr. Hogan F.  
 Buckley, Mr. Phillip G.  
 Bullock, Mr. Gerald D.  
 Camp, Miss Florence E.  
 Cannon, Miss Ellen H.  
 Cantrell, Miss Frances E.  
 Cantrell, Mr. Harry A.  
 Casteel, Mr. Barney P., Sr.  
 Cherry, Mr. S. D., Jr.  
 Cloudt, Mr. Frank Winfield  
 Cone, Mr. Louis H.  
 Cooper, Mrs. Curtis N.  
 Cotton, Mr. James A.  
 Couch, Miss Claudia Marie  
 Coursey, Mr. Hugh Winston  
 Cox, Mr. John Henderson  
 Cox, Miss Kathleen  
 Craig, Miss Helen Elizabeth

Crockett, Miss Sara Mae  
 Curtis, Miss Anna Clark  
 Daniel, Mr. James Atlas  
 Daughtery, Mr. William H.  
 Davis, Mr. Malcolm Mc.  
 Davis, Mr. Victor L.  
 Davis, Mr. William C.  
 Dean, Miss Marjorie E.  
 Dewberry, Mr. James W.  
 DiChristina, Mr. Frank H.  
 Diercks, Mr. John P.  
 Dodd, Miss Amy  
 Dozier, Miss Dot Lois  
 Edwards, Mr. George R.  
 Edwards, Mr. James Mc.  
 Escott, Miss Dorothy L.  
 Evans, Mr. Turner A.  
 Fenn, Mr. Harry T.  
 Fleming, Miss Vadie K.  
 Fountain, Miss Charlotte A.  
 Fountain, Miss Sarah E.  
 Freeman, Mr. Clyde C.  
 Gaston, Mr. James G.  
 Gillis, Mr. Walker  
 Groover, Mr. France C., Jr.  
 Hall, Mr. Jack E.  
 Habit, Mr. Isacc Nace  
 Hames, Mr. Robert L.  
 Hammond, Mr. Olin Bert  
 Harding, Miss Helen  
 Harrell, Mr. Joe, Jr.  
 Harriss, Miss Frances V.  
 Harris, Mr. Harold T.  
 Harris, Mr. Louis B.  
 Harris, Mr. William Henry III  
 Headrick, Mr. Robert Elbur  
 Henderson, Mr. DeMoyno  
 Henslee, Miss Jean  
 Henson, Mrs. Audrey Clemts  
 Herrick, Mr. George W.  
 Herrick, Mr. Jess Bradford  
 Holbrook, Mr. Carl Corley  
 Hill, Miss Evelyn Louise  
 Holder, Mr. Robert Burge  
 Holt, Miss Novelle Anita  
 Holtz, Mr. Harry Joseph  
 Houston, Mr. Sam Edwin, Jr.  
 Howell, Mr. Jean Bonner  
 Jackson, Mr. Clyde Howard

Jeter, Mr. Lewis Xavier, Jr.  
 Johnson, Mr. John Sidney  
 Johnston, Mr. Emory A.  
 Kessler, Miss Marian C.  
 Kimble, Mrs. Mary Kelly  
 Knudson, Mr. Everett  
 Kuettner, Mr. Alfred  
 Landis, Mr. Richard Earle  
 Lasseter, Mr. Chandler Percy  
 Laxon, Mr. James Clinton  
 Lewis, Mr. Jube A. H.  
 Lewis, Mr. Charles Turner  
 Longino, Miss M. Elsie  
 McBride, Mr. James Elliott  
 McClure, Mr. James Russell  
 McCollum, Mr. John Baylis  
 McCormick, Miss Laura Frances  
 McDaniel, Miss Lura Jean  
 McDaniel, Miss Sara Annette  
 McDonald, Miss Mary  
 McElwaney, Mr. James Lucious  
 McGraw, Miss Clarice  
 McMullen, Mr. Arvy Hugh  
 McNabb, Mr. James Harris  
 Mahnks, Miss Elsie A.  
 Markowitz, Miss Mabel Ruth  
 Mattison, Mr. Mahlon Wallace  
 Miles, Miss Erma Mason  
 Millard, Miss Jean F.  
 Milligan, Mr. Edward C.  
 Mitchell, Mr. Elbert Harold  
 Mitchell, Miss Jean  
 Mitchell, Miss Sara Virginia  
 Moore, Miss Ida Madge  
 Morris, Mr. Charles Eugene  
 Morris, Mr. Frank Anthony  
 Morris, Mr. Jack Emerson  
 Newton, Capt. Percy W.  
 Norris, Mr. Wallace Ewing  
 Noveck, Mr. Sidney  
 O'Kelly, Mr. Fred  
 Ostein, Mr. Carl Edward  
 Otwell, Mr. Paul L.  
 Overbay, Mr. Joe G.  
 Patterson, Miss Charlotte  
 Payton, Mr. Ernest  
 Peckham, Mr. Herbert Kenneth  
 Perry, Mr. Ben Franklin

Pickett, Miss Sarah Alice  
 Pittman, Miss Lucy Darden  
 Pittman, Miss Nellie Florence  
 Pool, Mr. Cecil Aubrey  
 Puckett, Mr. O. C.  
 Raven, Miss Bessie Clynn  
 Reed, Miss Lottie Christian  
 Reeves, Mr. Eugene Bob  
 Reid, Miss Caroline Howard  
 Roper, Mr. Robert Harold  
 Rogers, Mr. Virgil Odell  
 Rouse, Miss Eugenia Marcelle  
 Ross, Miss Dorothy Imogene  
 Schief, Miss Mary Louise  
 Seibert, Mr. Allen K.  
 Sewell, Mr. Nathan R.  
 Shelton, Miss Mary Elizabeth  
 Shell, Mr. George W.  
 Simmons, Mr. William S.  
 Simpkins, Miss Dorothy E.  
 Simpkins, Mr. Carl Newton  
 Slicer, Mr. Harry Louis  
 Smith, Miss Elsie Louise  
 Snow, Mr. Charles Carden  
 Speir, Mr. Edward Jennings  
 Spurlock, Mr. James Pagett  
 Stearman, Miss Ida Lee  
 Steinhauer, Mr. Roy Eugene  
 Still, Mr. Henry James  
 Stow, Miss Margaret Louise  
 Strange, Miss Dorothy Jeynelle  
 Strickland, Mr. Lee Howard  
 Thebaut, Miss Estelle  
 Thompson, Mr. George F.  
 Ward, Mr. Frank Bertran  
 Warren, Mrs. LaNelle W.  
 Wellborn, Miss Virginia J.  
 West, Mr. Ernest Harvey  
 Westbrook, Miss Evelyn  
 White, Mr. Newton McCoy  
 Willard, Miss M. Grace  
 Williams, Mr. Cecil Perry  
 Williams, Miss Harriet Frances  
 Williams, Mr. Robert Wesley  
 Wimbish, Mr. Bill  
 Womble, Mr. James David  
 Worley, Mr. James Douglas  
 Youngblood, Miss Mary Adele



IRA R. ABERNATHY

J. N. BLACK



MARJORIE CASH

JAMES CASTON

# GRADUATE AND SPECIAL STUDENTS

ALICE FUTRELL

DOROTHY GARSHAW



CHARLES A. JOHNSTON

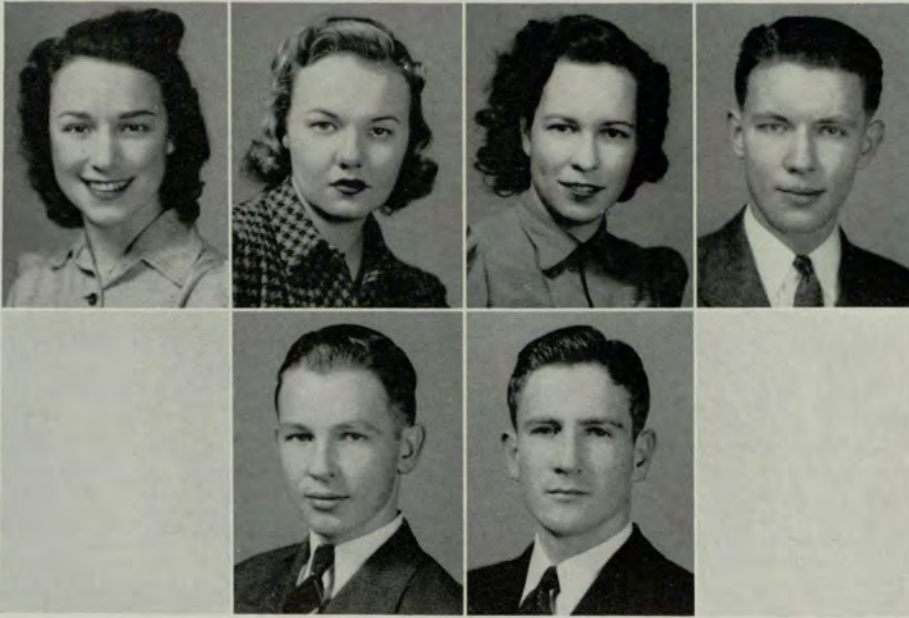
HARRY JONES



DOROTHY MALCOLM

WILLIAM MATHIAS KUHNER





Mary Mays

Mrs. James Moore  
Martin Cooper

Emma Lou Moss  
Robert S. Thompson

William Ramsden

## SPECIAL CLASS ROLL

Abernathy, Mr. Ira R.  
Abraham, Mr. W. J.  
Adams, Mr. C. Lee  
Amos, Miss L. Dora  
Anderson, Mr. J. M., Jr.  
Anderson, Miss J. Mae  
Andrews, Mrs. S. Hall  
Angier, Miss C. Brooks  
Archer, Mr. L. H.  
Arnold, Mr. H. A.  
Asher, Mr. J. Alvin  
Astin, Miss Ruth W.  
Austin, Mr. Jack P.  
Axelrod, Miss Gloria L.  
Bandy, Mr. John James  
Barber, Mr. Don P.  
Barker, Mr. Charles F.  
Barnes, Miss Jennie M.  
Barrett, Mr. Robert T.  
Belyeu, Mr. Frank L., Jr.  
Bentley, Mr. Robert E.  
Biggers, Miss Mary E.  
Bishop, Mr. George H.  
Black, Mr. William  
Blackmon, Mr. Warren L.  
Booker, Mr. Clifford M.  
Bosshardt, Mr. Charles J.  
Bowdon, Mr. Joe Martin  
Bowen, Mr. James Albert  
Bradfield, Miss Florence  
Broome, Mr. Dean C.  
Brown, Mr. Alfred E.  
Brown, Mr. Thomas E., Jr.  
Buford, Mr. Gerald B.  
Bunnell, Mr. Elmer R.  
Burriss, Mr. Thomas N.

Burtchaell, Mr. L. Edward  
Burton, Mr. William K., Jr.  
Callaway, Miss Mary E.  
Cannon, Miss Clara L.  
Carter, Miss Catherine L.  
Carter, Mr. Charles Ray  
Cash, Miss Marjorie E.  
Casteel, Mr. Barney P., Sr.  
Caudle, Miss Charley Will  
Centorbe, Mr. Joseph K.  
Chambers, Miss Catherine P.  
Chambers, Mr. Lewis A.  
Cheves, Mr. Samuel Alison  
Clark, Mr. W. Homer  
Clementz, Miss Mary E.  
Cole, Miss Christine  
Collins, Mr. Commodore V.  
Connally, Mr. Louis D.  
Connell, Mr. James Berry  
Conner, Miss Frances E.  
Cook, Mr. John Vernon  
Copeland, Mr. Lewis Leo  
Cornwell, Miss Emma G.  
Cottongim, Mr. Bill, Jr.  
Crawford, Mr. Arthur A.  
Crowe, Mr. Loyd  
Crowe, Mr. Richard H.  
Crowe, Mr. William F.  
Crumbley, Miss Sara E.  
Cunningham, Miss Ruth Virginia  
Curbow, Mr. Whit Stein, Jr.  
Davidson, Miss V. Bernice  
Davis, Mr. Ernest B.  
Davis, Mr. Louis Amzie  
Dean, Mr. Thomas Claude  
Dekle, Mrs. Virginia S.

De Lay, Miss Doris Marie  
Delony, Mr. J. Cecil, Jr.  
Dennis, Mr. George Harry  
Dewberry, Mr. Lawrence G.  
Dickinson, Mr. Werner L.  
Dillard, Mr. James A.  
Dixon, Mr. Bill C., Jr.  
Dixon, Mr. Joseph St. John  
Dobner, Mr. Charles Adam  
Dodys, Mr. Pedro N.  
Duffy, Mr. James John  
Dunaway, Mr. William S.  
Duncan, Miss Ada M.  
Dunning, Mr. Hugh R.  
Dupuy, Miss Constance  
Edmondson, Miss Frances E.  
Elsner, Mr. Ernest L.  
Emery, Mr. Joseph Hill, Jr.  
Egart, Miss Ernestine E.  
Enloe, Miss Evelyn  
Ennis, Miss Louise  
Epsten, Miss Elizabeth  
Estes, Mrs. Edna Wingo  
Estes, Mrs. Joe H.  
Evans, Mr. Julian Earl  
Ewing, Mr. Jack (Jake)  
Fender, Mr. Jack Norton  
Ferguson, Mr. Robert Howell, Jr.  
Fetzer, Mr. Jacob F.  
Finch, Mr. Robert Foster  
Fisher, Mr. Jack Everitt  
Floyd, Mr. Donald  
Flynt, Mr. Max Sidney  
Foreman, Mr. William Grey  
Foster, Mr. Ernest O.  
Fowler, Miss Janie Tennent

Fraser, Mr. Frank A., Jr.  
 Gaissert, Mr. Thomas Lee  
 Gay, Mrs. Flora Wiley  
 Gibson, Mr. C. Bill  
 Gifford, Mr. John Purser  
 Godwin, Miss Betty  
 Goodyear, Mr. James Dickey  
 Gordon, Mr. Alexander Stott  
 Gottenstrater, Mr. William J.  
 Grier, Miss Bobbie Elaine  
 Grier, Miss Frances  
 Griffin, Mr. Max Clyde  
 Griffith, Miss H. Jeanne  
 Griffith, Mr. Ralph Devoe  
 Gionnone, Miss Marie Frances  
 Gibson, Miss Frances Maldo  
 Groover, Mr. Wiley Simpson  
 Haines, Miss Carrie A.  
 Hall, Mr. Forrest A.  
 Hamilton, Mr. George B.  
 Hamilton, Mr. William Jackson  
 Hammett, Mr. Marion  
 Hardeman, Mr. Theodore Ulla  
 Harding, Miss Helen  
 Hardy, Mr. Jack Cecil  
 Hargrett, Mr. Haines Hilsman  
 Harrell, Mrs. Joe M.  
 Harris, Mr. Ralph A.  
 Harris, Miss Thelma E.  
 Harrison, Mr. Curtis H.  
 Hearn, Mr. William Monroe  
 Hickman, Mr. Paul Roland  
 Hicks, Miss Annie Mae  
 Hicks, Mr. James H.  
 Hightower, Mr. John R.  
 Hodges, Mr. LeRoy  
 Holmes, Miss Lounette W.  
 Holt, Mr. Klata  
 Homburger, Mr. Kurt  
 Hooks, Mr. George B.  
 Hosford, Mr. Bowen I.  
 Howard, Mr. Floyd Webb  
 Howard, Mr. Samuel Celinton, Jr.  
 Huckaby, Miss Helen Elizabeth  
 Hughes, Mr. Curtis A.  
 Hughes, Miss Evelyn Louise  
 Hughes, Mr. James Cecil  
 Hunter, Mr. Allen Key  
 Hunter, Miss Eloise E.  
 Ingram, Mr. Ason O.  
 Ingram, Miss Dorothy  
 Ireland, Mr. Charles Robert  
 Jackson, Mrs. Madaline  
 James, Mr. Lewis Mills, Jr.  
 Jenkins, Miss Doris Lucile  
 John, Mr. Franklyn Harold  
 Johnson, Mr. C. E.  
 Johnson, Mr. James O'Neal  
 Johnson, Mr. James S.  
 Johnson, Mr. Robert Henry  
 Johnson, Miss Vesta C.  
 Jones, Mr. Albert Sidney  
 Jones, Mr. Harry  
 Jones, Mr. John Paul  
 Kamack, Miss Anne  
 Karwisch, Mr. Jim Thurman  
 Keene, Mr. Kassel Monford  
 Kelly, Miss Nannie Ella  
 Kimble, Mr. Edward L., Jr.  
 Kitchens, Miss Inez  
 Kiser, Mr. Gordon P., Jr.  
 Kirven, Miss Martha  
 Kown, Miss Aileen Merriss  
 Kuhnien, Mr. William Matthias, Jr.  
 Lamb, Mr. George T.  
 Leake, Mr. Paul Edmund  
 Levy, Mr. Ted J.  
 Light, Mr. James G.  
 Lindsay, Mr. E. R.  
 Loweinsohn, Mr. Ben  
 Long, Mr. John R.  
 Love, Mr. Robert F.  
 Loveless, Mr. Joe E.  
 Loven, Mr. Grady L.  
 Lunsford, Miss Betty  
 Lunsford, Miss Clifford  
 McClatchey, Miss Grace D.  
 McClure, Miss Charlotte  
 McClure, Mr. Francis Marcelle  
 McCurdy, Mr. George T., Jr.  
 MacDonald, Mr. Harron Martin  
 McHan, Miss Margaret Josephine  
 McDade, Miss Dorothy L.  
 McNair, Mr. Walter Edward  
 McPherson, Mr. Ahaz  
 Maddux, Mr. Theodore, Jr.  
 Mahaffey, Miss Muriel Esther  
 Malcolm, Miss Dorothy E.  
 Malone, Mr. John F.  
 Maloney, Mr. W. Harwell  
 Martin, Mr. Ernest J., Jr.  
 Massey, Miss Edith Allene  
 Mathews, Miss Myrtle Mary  
 Mathis, Miss Etta Walker  
 Medcal, Mr. George A.  
 Mitchell, Mr. R. Claude  
 Mock, Mr. William Gross  
 Morgan, Mr. Newton  
 Morris, Miss Anne Pauline  
 Morris, Mr. Marion Floyd  
 Moseley, Mr. George William  
 Moss, Miss Emma Lou  
 Moss, Mrs. Margaret Shaw  
 Newlin, Mr. Robert S.  
 Oakes, Mrs. Sadie Evelyn  
 O'Donnell, Mr. Paul Eugene  
 O'Kelley, Mr. Raymond H.  
 Osborn, Miss Patricia Janet  
 Owen, Miss Inez  
 Paden, Miss Martha Louise  
 Palmer, Mr. Clarence E.  
 Palmer, Mrs. Florrie E.  
 Parker, Mr. Arnold Bostwick  
 Parnell, Mr. Bill Kemp  
 Paschal, Miss Lora  
 Patterson, Miss Imaal E.  
 Peck, Mr. Alvan Warner  
 Pendley, Mr. Theorn G.  
 Pickard, Miss Cynthia Mae  
 Pierce, Mr. Ernest  
 Pike, Mr. Irwin Hunter  
 Pitts, Miss Lucille  
 Pitts, Mr. Robert L.  
 Puckett, Mr. Billie M.  
 Purdie, Mr. Alec H.  
 Quigley, Mr. Clyde  
 Reid, Mr. J. Hal  
 Reilley, Mr. John Francis  
 Risner, Mr. Herndon Eldred  
 Robertson, Mrs. Ruby Matthews  
 Roberts, Mr. Charles T.  
 Roberts, Miss Donna Louise  
 Roberts, Mr. S. Jack  
 Robinson, Miss Harriet  
 Rogers, Mr. Lyman Earlson  
 Roton, Miss Vera Mildred  
 Saggus, Mr. Lawrence Darden  
 Sansing, Mr. Max  
 Scruggs, Mr. John F.  
 Setze, Miss Elizabeth  
 Shafe, Mr. George D.  
 Shaw, Mr. Moody Hamilton  
 Shaw, Mr. William Jermaine, Jr.  
 Sherrer, Mr. Orrien  
 Shivers, Mr. Benjamin Guy  
 Shockley, Mr. Seaborn H.  
 Shropshire, Mr. Monroe Nixon  
 Sinclair, Miss Jean Winburn  
 Sitton, Mr. James M.  
 Smith, Mrs. A. P.  
 Smith, Miss Happy Doris  
 Smith, Mr. Henry McCord  
 Smith, Mr. Martin Cooper  
 Smith, Mr. Thomas F.  
 Smythe, Mr. Robert S.  
 Solomon, Mr. Harry  
 Spratt, Mr. Henry Guerard  
 Stainback, Mr. James Frank, Jr.  
 Stell, Mr. John Elwin  
 Stewart, Mr. Buster  
 Stockard, Mr. Roy Barnes  
 Stokes, Mr. C. G.  
 Stone, Mr. Frank C., Jr.  
 Story, Mr. Kenneth Vashti  
 Stoughton, Mr. Fred Jack  
 Strain, Mr. Arthur Taylor  
 Strother, Mr. Glenn H.  
 Taylor, Miss Erin Dale  
 Thompson, Mr. Charles D.  
 Thompson, Mr. Robert Spencer  
 Thorne, Mr. Denton  
 Thornton, Mr. S. Norman  
 Tillman, Miss Garland Louise  
 Townsend, Miss Dorothy  
 Turner, Mr. Harry  
 Turner, Mr. Joel Olds  
 Turner, Miss Mary Jane  
 Tyson, Mr. Richard H.  
 Upchurch, Miss Mary India  
 Upshaw, Mr. McAllister C.  
 Wagnon, Mr. Alvin  
 Walden, Miss Mary G.  
 Walker, Miss Heloise Marie  
 Wall, Miss Mayodel  
 Wallace, Mr. Pau Derwood  
 Waton, Miss Laura E.  
 Warr, Mrs. Florine (A. D.)  
 Watkins, Mr. Clarence Avery, Jr.  
 Wheeler, Mr. Thomas Warren  
 White, Miss Grace  
 Wicker, Miss Kathryn  
 Wilkerson, Miss Martha Angela  
 Wilkenson, Mr. Fred T.  
 Williams, Miss Ruth Plunkett  
 Willis, Miss Vera Mae  
 Woodruff, Mrs. Bessie L.  
 Worley, Mr. Edwin  
 Wright, Mr. Young Edward  
 Yarbrough, Mr. Richard Wadham  
 Young, Miss Elizabeth  
 Zimmerman, Mr. Edgar Alexander



# ACTIVITIES

# The STUDENT COUNCIL



JAMES GRIFFITH  
President

- JAMES GRIFFITH . . . . . President
- JOE RHYNE . . . . . Vice-President
- LEE BURGE . . . . . Secretary
- LEONARD KUYPER . . . . . Treasurer

The Student Council was organized to coordinate class activities and to encourage a class understanding between students and faculty. It is the purpose of the Student Council to express the will of the majority of the Student Body through the guidance of Student Activities; to strive toward an ever closer understanding between Faculty and Students, and to work toward the betterment and growth of the Evening College and its students.

- B. Allen  
J. N. Black  
J. Brandes  
H. Brewer  
L. Burge
- J. Cash  
J. Cason  
O. Childs  
E. Clark  
C. Cotton
- J. Davis  
F. DiChristina  
J. Driskell  
T. Flowers  
D. Floyd
- J. Freeman  
B. Griffith  
C. Hammond  
C. G. Huey



## EXECUTIVE COUNCIL

- |  |                             |                               |
|--|-----------------------------|-------------------------------|
| SENIORS                                    | JUNIORS                     | PRE-JUNIORS                   |
| Henry T. Smith<br>Leonard Kuyper           | Joe Rhyne<br>Charles Cotton | Frank Carter<br>Walter Cumbie |
| SOPHOMORES                                 |                             | FRESHMEN                      |
| James Freeman<br>Clifford Zimmerman        |                             | Lee Burge<br>Wallace Norris   |
| EVENING SIGNAL—Deane Broome—George Beckham |                             |                               |
| NOCTURNE—John Cash—Charles Cotton          |                             |                               |

## CLASSROOM REPRESENTATIVES

- |                   |                  |                  |                   |
|-------------------|------------------|------------------|-------------------|
| Bill Allen        | Gus Evans        | Al Kuettner      | Lewis Riden       |
| J. N. Black       | Robert Ferrell   | Tom Luck         | Emily Roberts     |
| William Black     | Vadie Fleming    | Mary McDonald    | Cooper Smith      |
| James Brandes     | Thurxton Flowers | Bruce McDougall  | Aubrey Strickland |
| Homer Brewer      | Don Floyd        | Luta Mitchell    | Tom Turner        |
| Leslie Buchanan   | Cecil Griffin    | Raymond Mitchell | James Welch       |
| Jack Cason        | Bob Griffith     | James Moore      | G. S. Whatley     |
| Otis Childs       | W. K. Hall       | Pauline Morris   | Don White         |
| Ed Clark          | Claire Hammond   | Vera Murray      | McCoy White       |
| Q. S. Black       | C. G. Huey       | Fred O'Kelley    | Roy Wicker        |
| James Davis       | Dot Ingram       | Nelle Osburn     | Bob Williams      |
| Frank DiChristina | Caroline Jackson | Joe Pendergrast  | Fred Windham      |
| Jack Driskell     | Al Jones         | Cecil Poole      |                   |
| David Enlow       | Bill Jordan      | Lottie Reid      |                   |

First Row—C. Jackson, A. Jones, B. Jordan, A. Kuettner, L. Kuyper, T. Luck, M. McDonald. Second Row—L. Mitchell, R. Mitchell, J. Moore, V. Murray, W. Norris, N. Osborn, C. Poole. Third Row—J. Rhyne, L. Riden, E. Roberts, C. Smith, H. T. Smith, T. Turner, J. P. Welch. Fourth Row—D. White, M. White, R. Wicker, F. Windham.



# The NOCTURNE of 1940



JOHN CASH  
Editor

## EDITORIAL STAFF

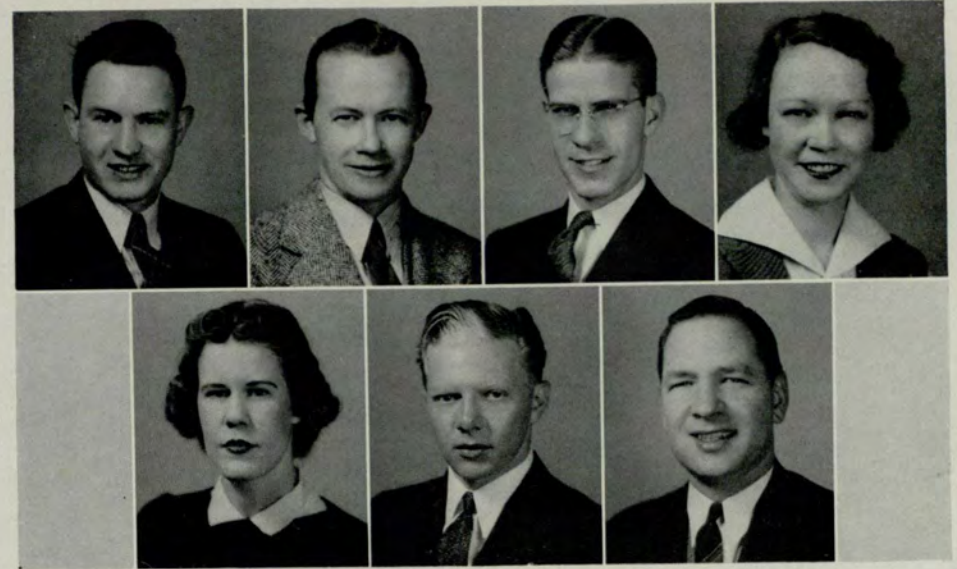
- JOHN E. CASH . . . . . Editor-in-Chief  
 PICKETT HYNES . . . . . Associate Editor  
 BILL ALLEN . . . . . Associate Editor  
 AL KUETTNER . . . . . Picture Editor  
 MARTHA KIRVEN . . . . . Assistant Picture Editor  
 HOWARD ALLISON . . . . . Art Editor



CHARLES COTTON  
Business Manager

## BUSINESS STAFF

- CHARLES E. COTTON . . . . . Business Manager  
 LEWIS RIDEN . . . . . Assistant Business Manager  
 JACK DRISKELL . . . . . Advertising Manager  
 CLAIRE HAMMOND . . . . . Circulation Manager



Bill Allen—Howard Allison—Jack Driskell—Claire Hammond  
 Pickett Hynes—Al Kuettner—Lewis Riden

The purpose of the NOCTURNE is to record in permanent form the activities of the Georgia Evening College. To accomplish this the staff has worked all year with your enjoyment and appreciation as its inspiration. If you should, in the years to come, be reminded of the hours of work and play spent with your classmates, and relive for a short time the events of your college days—our efforts shall be justified.

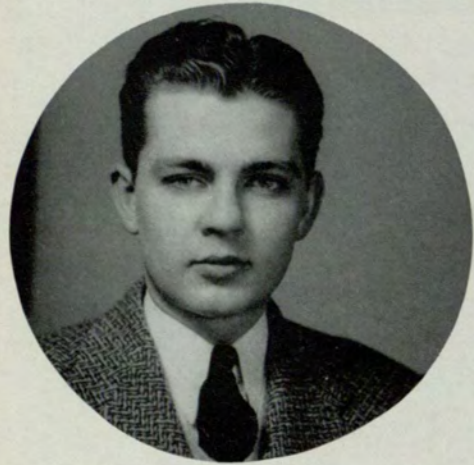




# The EVENING SIGNAL



DEAN BROOME  
Editor-in-Chief



GEORGE BECKHAM  
Business Manager

DEAN BROOME . . . . . Editor

### ASSOCIATE EDITORS

WALTER BUCHANAN	BOOTS HOAGE
FORD RIVES	HAROLD DUNCAN
HENRIETTA GREEN	

### BUSINESS STAFF

GEORGE S. BECKHAM . . . . .	Business Manager
NELLE OSBORN . . . . .	Assistant Business Manager

### FACULTY ADVISORS

DR. GEO. M. SPARKS	DR. JAS. ROUTH
--------------------	----------------

The aim of the Evening Signal during 1939-1940 has been to reflect the spirit of the Evening College and its work, to serve as a means of articulate student leadership, with the interests of the school and its students always primary. Journalistic innovations during the year were: condensation of news, and a wider coverage of student activities; up-to-date make-up; and a brighter, more concise style in both news and editorial matter.



H. Duncan  
H. Green  
B. Hoage

N. Osborn  
F. Rives

# INTER-FRATERNITY COUNCIL



FRANCES PIERCE  
President

## OFFICERS

- FRANCES D. PIERCE . . . . . President  
 LEWIS RIDEN . . . . . Vice-President  
 VIRGINIA WISE . . . . . Secretary-Treasurer

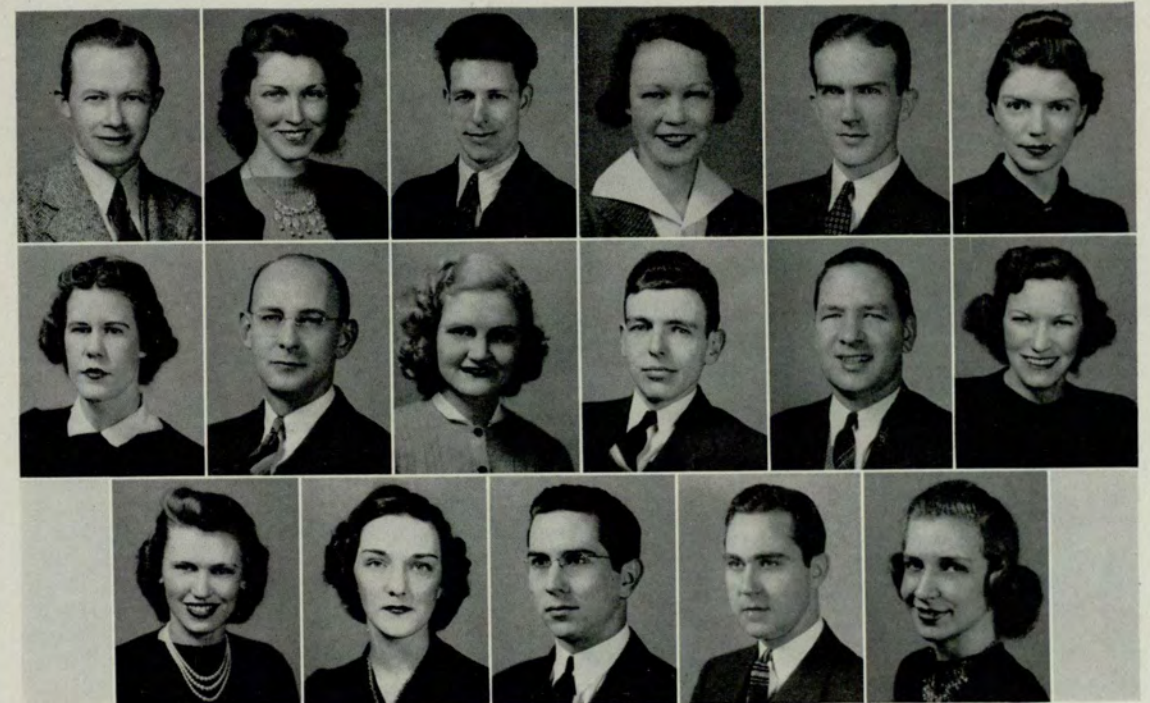
It is the purpose of Interfraternity Council to promote a close and harmonious affiliation among the clubs, societies, and fraternities of the Evening College, and to render full assistance to the school administration in promoting the interest and welfare of the Evening College

Interfraternity Council this year is sponsoring an Honors Banquet. At this time the following organizations present awards : Delta Lambda Sigma, Hilarian Club, Kappa Theta, and Phi Chi Theta. The banquet affords the opportunity for deserved recognition in the presence of the most outstanding members of the student body.

## REPRESENTATIVES

- |                    |                 |                  |
|--------------------|-----------------|------------------|
| ALPHA KAPPA PSI    | LEWIS RIDEN     | EDWARD A. PIERCE |
| DELTA KAPPA        | ROBERT WINFREE  | HOWARD ALLISON   |
| DELTA LAMBDA SIGMA | KAY TABOR       | MARTHA TUCKER    |
| DELTA SIGMA PI     | HAROLD HEMRICK  | LEONARD KUYPER   |
| HILARIAN CLUB      | CLAIRE HAMMOND  | BOOTS HOAGE      |
| KAPPA THETA        | NELLE OSBORN    | ELIZABETH CRAIG  |
| PHI CHI THETA      | NELL SHROPSHIRE | PICKETT HYNES    |
| VENETIAN SOCIETY   | DON WHITE       | HAROLD DUNCAN    |

First Row : H. Allison, E. Craig, H. Duncan, C. Hammond, H. Hemrick, B. Hoage. Second Row : P. Hynes, L. Kuyper, N. Osborn, E. Pierce, L. Riden, N. Shropshire. Third Row : K. Tabor, M. Tucker, D. White, B. Winfree, V. Wise.



# DELTA MU DELTA



JAMES DAVIS  
President

## OFFICERS

- JAMES DAVIS . . . . . President  
 EWELL Y. JACKSON . . . . . Vice-President  
 PICKETT HYNES . . . . . Secretary  
 ORDRY PALMER . . . . . Treasurer

## DELTA MU DELTA

### THETA CHAPTER

Since the installation of Theta Chapter, June 9, 1931, Delta Mu Delta has done much to promote a higher standard of scholarship in the Evening College. This fraternity is to promote "higher scholarship in subjects set forth in the curriculum of the Evening College; to stimulate interest in the advancement of scholarly ideals; and to recognize and reward scholastic attainment in the studies as set forth above."

Through the Delta Mu Delta Honor Roll, published each quarter, the records of students of outstanding scholastic rating are acknowledged.

The election of members, selected from the Graduating Seniors, together with two undergraduates, honors those students who have successfully passed the rigid requirements for this, the only national scholarship fraternity in the Evening College.

## MEMBERS

1939

Catherine Baker  
 Timothy Bullard  
 Maymi Walker Chandler  
 James Davis

H. Talmadge Dobbs  
 Pickett Hynes  
 James H. McGuire  
 Ordry Palmer

H. Mae Tankersley  
 D. Rebecca Williams  
 Harold Willingham

1938

Elizabeth Adams  
 E. W. Aldredge  
 Albert P. Clark

Alice S. Downing  
 Mary Hammond  
 Robert C. Lowe, Jr.

Thomas A. Seals  
 H. Earl Strying  
 M. Christine Wing

1937

Marcia Baker  
 Clarence H. Hill  
 Ewell Y. Jackson

Robert Kimsey  
 T. M. McClellan  
 C. Ed Martin

Ben Overstreet, Jr.  
 Helen Tucker Thompson  
 R. Durwin White

1936

E. J. Barber  
 Tallulah Davis  
 Lloyd C. Ginn

A. D. Gregory, Jr.  
 Hilda Isakson Jackson  
 Robert Johann

Susie Sudderth  
 George Wing

1935

Lamar G. Baker  
 Reuben G. Crimm  
 Elizabeth Curtis Dexter

Francis M. Osteen  
 Maurice Strickland

Robert Strickland  
 Ted J. Whitehead

1934

Mildred Chesnut Brown  
 Francis Duggan

J. W. Goldsmith  
 M. D. Harper, Jr.

George Manners  
 Antha Mulkey

1933

F. C. Brandes  
 N. E. Boswell

Catherine Martin Duggan

B. F. Wells, Jr.

1932

T. W. Duncan  
 Margaret Lloyd

J. Harry Gault  
 Ruth Rogers

1931

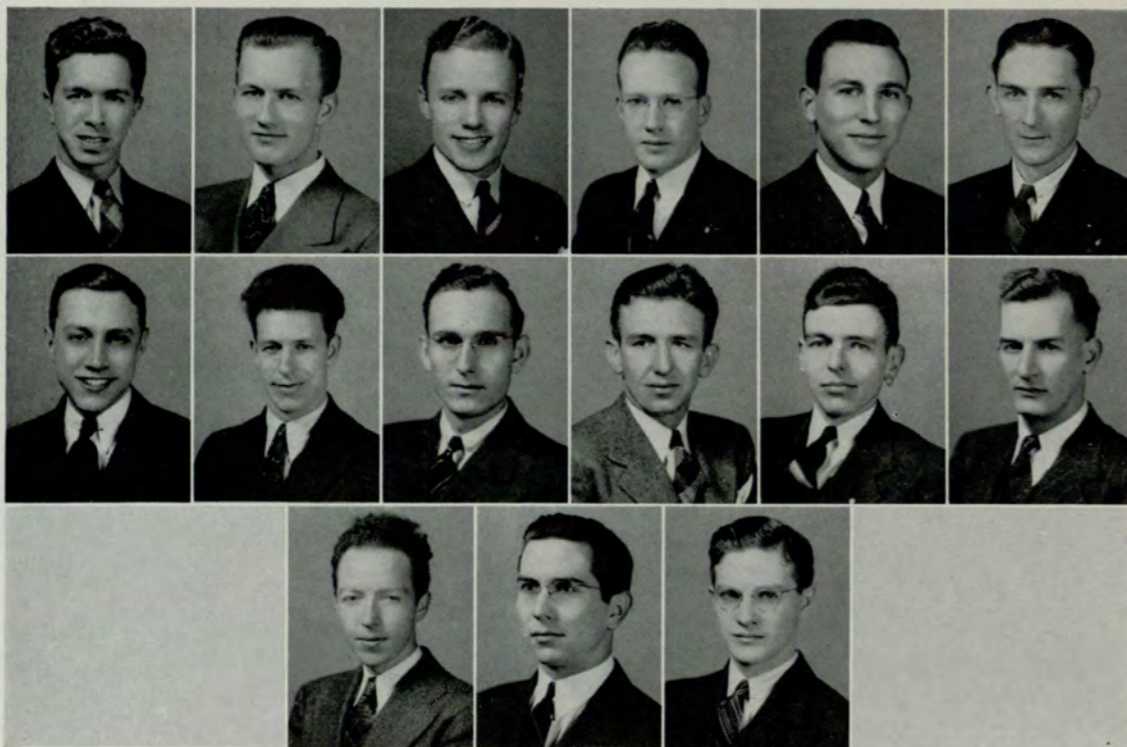
Fae Allen  
 W. W. Aycock  
 E. H. Bishop  
 Mary Cheatam Buccholz  
 L. C. Evans  
 Richard A. Hills  
 John Janoulis  
 C. Roy McCormack  
 H. C. Kitchens  
 George E. Parker

Norman E. Pettis  
 John M. Reed, Jr.  
 H. L. Robinson  
 C. S. Spinks  
 Bernard Suttles, Jr.  
 M. Guy Swanson  
 M. W. Swint  
 C. Z. Zellar  
 J. W. Zuber, Jr.



PICKETT HYNES  
Secretary

# INTRAMURAL KEY



First Row : H. Brewer, T. Brooks, E. Clark, J. Clark, C. Cotton, C. Darnell.  
 Second Row : J. Davis, H. Duncan, T. Flowers, L. Oliver, E. Pierce, F. Rives.  
 Third Row : H. Smith, D. White, F. Windham.

HOMER T. BREWER	JAMES H. DAVIS	HENRY T. SMITH
TILDEN BROOKS	HAROLD DUNCAN	JOSEPH STRADLEY
EDWIN M. CLARK	LEONARD J. KUYPER	DON WHITE
JOHN B. CLARK	LONNIE OLIVER	WILBUR WHITE
CHARLES E. COTTON	EDWARD A. PIERCE	FRED WINDHAM
CHARLES DARNELL	G. FORD RIVES	

## FACULTY MEMBERS

DR. GEO. M. SPARKS      T. M. McCLELLAN

## OFFICERS

LEONARD J. KUYPER . . . . . President  
 LONNIE OLIVER . . . . . Vice-President  
 JOHN B. CLARK . . . . . Secretary  
 EDWARD A. PIERCE . . . . . Treasurer



LEONARD KUYPER  
 President

Intramural Key was founded in 1934 with the following purposes, found in the preamble to its Constitution :

1. A closer understanding and cooperative spirit among students, and between the student body and school administration;
2. An aspiration for greater intellectual achievement;
3. A study of student problems to the end that all student life may be enriched, and the progress and best interest of the Georgia Evening College, in which this organization is founded, may be stimulated and promoted.

This year Intramural Key again sponsored Get-Acquainted Week, designed to acquaint the students of the Evening College with each other and with the faculty. This year, too, the members assisted the administration in registering new students and in helping them plan their schedules.

Shortly after the opening of the first quarter, Intramural Key entertained the men students who were registered at the school for the first time that quarter. Short talks were given by Dr. Sparks, Mr. McClellan, and several members of the society, telling the new men of the opportunities open to them at the College, and of the many honorary and activity organizations for which they were eligible.

One of the most brilliant affairs, from the standpoint of good will and publicity for the school was "Visiting Faculty Night" when, in November, sixteen outstanding business and professional men of Atlanta and vicinity took over six o'clock classes, and administered them in admirable fashion. Later the visitors, faculty members, and Intramural Key members met for a buffet supper. The aim of the society is to have a similar occasion every year in order to better acquaint the business men of Atlanta with the opportunities open to young business men and women at the Evening College.

Intramural Key also took the initiative in making fire escape plans and educating the students in how to leave the building safely in case of emergency.

At Thanksgiving, Intramural Key continued its plan of distributing baskets to needy families, and at Christmas cooperated with Crimson Key in providing a Santa Claus party for many underprivileged children.

Intramural Key has proven itself to be an excellent intermediary acting between the student body and the administration on all matters which concern the welfare and advancement of Georgia Evening College.

# The CRIMSON KEY



ELIZABETH RAMSDEN  
President

## OFFICERS

- ELIZABETH RAMSDEN . . . . . President  
 LUTA MITCHELL . . . . . Vice-President  
 VIRGINIA HIATT . . . . . Secretary  
 CLAIRE CHRISTIAN . . . . . Treasurer

FOUNDED GEORGIA EVENING COLLEGE, JANUARY, 1935

To promote a closer understanding between the Administration and the students of the Evening College, and to cooperate with the faculty and other organizations of the school to the end that there may be fostered and maintained the highest standards of scholarship, social activities, and moral ideals among the women students.



E. Baird F. Kloeckler	R. Chapman C. Manners N. Osborn	B. Hoage L. Marchman E. Roberts	P. Hynes P. McIntyre K. Tabor	W. Jackson L. Mitchell
--------------------------	---------------------------------------	---------------------------------------	-------------------------------------	---------------------------

## MEMBERS

- |                   |                   |
|-------------------|-------------------|
| EMMA BAIRD        | CLAIRE MANNERS    |
| RUBY CHAPMAN      | LOUISE MARCHMAN   |
| CLAIRE CHRISTIAN  | PRENTISS MCINTYRE |
| VIRGINIA HIATT    | LUTA MITCHELL     |
| BOOTS HOAGE       | NELL OSBORN       |
| JEWELL HORD       | ELIZABETH RAMSDEN |
| PICKETT HYNES     | EMILY ROBERTS     |
| WILLATHEA JACKSON | KAY TABOR         |
| FIDELES KLOECKLER |                   |

# THETA XI ZETA



HENRY T. SMITH  
President

## OFFICERS

- HENRY T. SMITH . . . . . President  
 G. CLIFTON DARBY . . . . . Vice-President  
 JOHN B. CLARK . . . . . Secretary  
 EDWARD A. PIERCE . . . . . Treasurer

## THETA XI ZETA

(Owls Club)

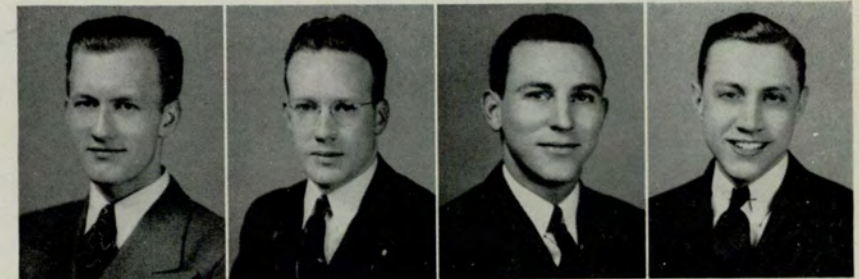
FOUNDED EVENING COLLEGE NOVEMBER 20, 1924

The purpose is to honor those men who have taken an active interest in the welfare and activities of the Evening College; to honor those men who have attained a scholastic average of eighty or above; to promote better fellowship by taking an active part in making new men acquainted; to encourage and promote any objective whereby the Evening College may be benefited.

## MEMBERS

- |                   |                   |
|-------------------|-------------------|
| TILDEN L. BROOKS  | LEONARD J. KUYPER |
| JOHN B. CLARK     | LONNIE OLIVER     |
| CHARLES E. COTTON | EDWARD A. PIERCE  |
| G. CLIFTON DARBY  | G. FORD RIVES     |
| JAMES H. DAVIS    | HENRY T. SMITH    |
| JAMES L. FREEMAN  | DON WHITE         |
| ALBERT L. JONES   | FRED WINDHAM      |

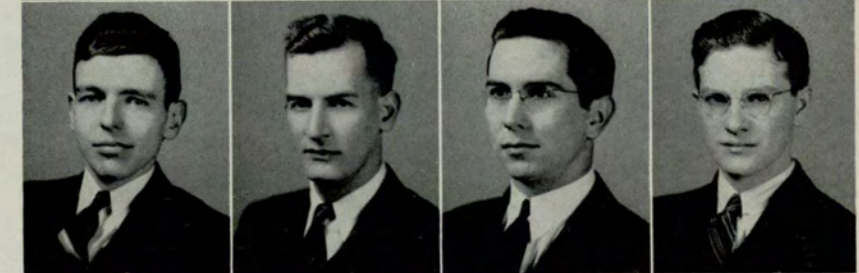
T. Brooks  
J. Clark  
C. Cotton  
J. Davis



J. Freeman  
A. Jones  
L. Kuyper  
L. Oliver



E. Pierce  
F. Rives  
D. White  
F. Windham



# ALPHA KAPPA PSI FRATERNITY



Bill Allen  
Tilden Brooks  
John Cash



Jack Cason  
Otis Childs  
Louis Corrigan



Charles Cotton  
Charles Darnell  
Jack Driskell



George Edwards  
Sam Franklin  
C. G. Huey



Bill Jordan  
Burt Jordan  
Al Kuettner

## PI CHAPTER

Installed November 27, 1917

Professional Fraternity in Commerce

Founded New York University,

October 5, 1904

The objects of this fraternity shall be to further the individual welfare of its members, to foster scientific research in the fields of commerce, accounts and finance; to educate the public to appreciate and demand higher ideals therein; and to promote and advance in institutions of collegiate rank courses leading to degrees in business administration.



LEWIS RIDEN  
President

Dick Landis  
W. A. Lee  
Tom Nalley

Lonnie Oliver  
Ed Pierce  
Cecil Poole

Joe Redwine  
Carl Simpkins  
Bill Simmons

## OFFICERS

LEWIS RIDEN . . . . . President

CHARLES COTTON . . . . . Vice-President

BILL ALLEN . . . . . Secretary

LONNIE OLIVER . . . . . Treasurer

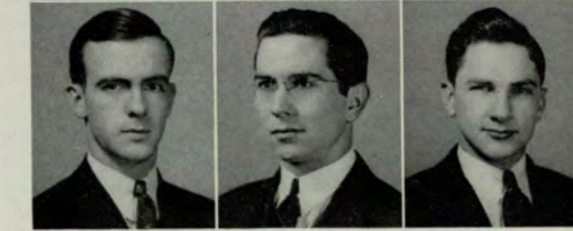
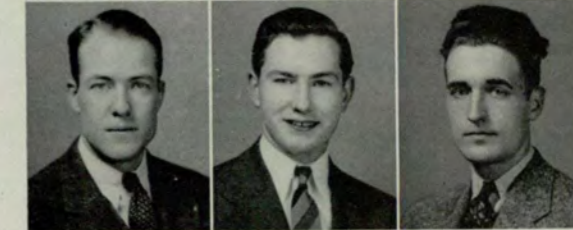
HENRY T. SMITH . . . . . Master of Rituals

ROBERT LOWE . . . . . District Councilor

JACK TURNER . . . . . Deputy Councilor

Henry T. Smith  
Gilbert Stockton  
Harold Tabor

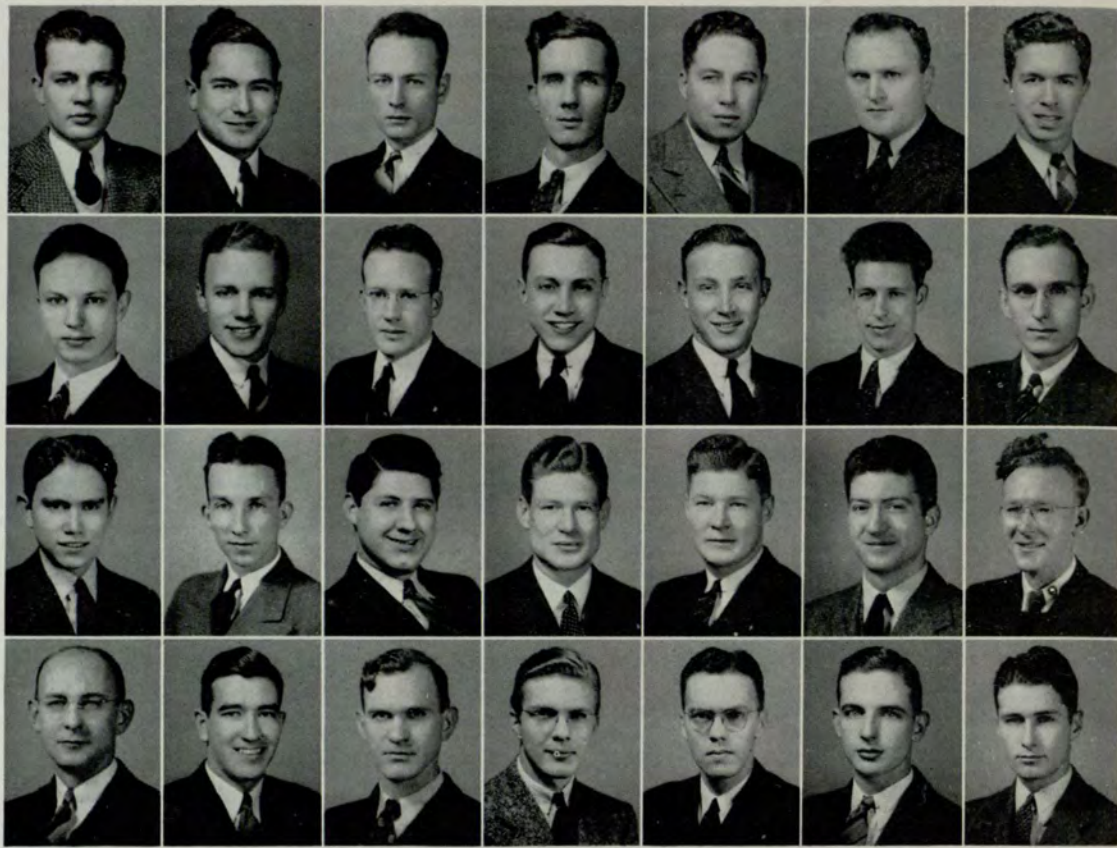
Bill Thomas  
Don White  
Kenneth Zimmerman



Other Members: C. Cooper, B. Dunlap, F. O'Kelley, R. Sayne, D. Thomason, B. Wehunt, C. Zimmerman, V. Zink.



# INTERNATIONAL FRATERNITY of DELTA SIGMA PI



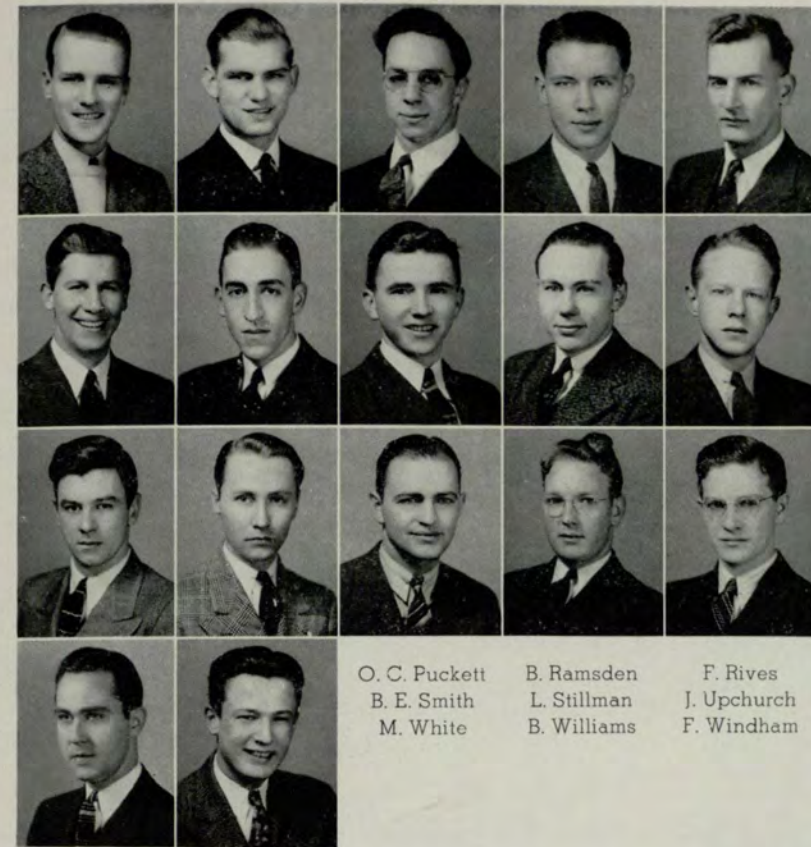
G. Beckham	E. Bolen	B. Bost	C. Bowling	W. Boyd	J. Brandes	H. Brewer
W. Buchanan	E. Clark	J. Clark	J. Davis	F. DiChristina	H. Duncan	T. Flowers
W. Frederick	J. Freeman	A. Garoni	J. Griffith	R. Griffith	C. Johnston	A. Jones
L. Kuyper	M. Latimer	C. Leslie	T. Luck	J. McCollum	J. McNabb	L. Murphy

Other Members: T. Bridges, F. Carter, C. Dobbins, P. Dobbins, R. Dozier, R. Ferrell, F. Gregory, R. McGill, D. Wiley, L. Burroughs, K. Peckham, F. Coley, E. M. Brown.



## OFFICERS

HAROLD HEMRICK	Headmaster
ED. CLARK	Senior Warden
ROSCOE WALKER	Junior Warden
FORD RIVES	Treasurer
JAMES FREEMAN	Master of Festivities
JAMES DAVIS	Scribe
FRED WINDHAM	Historian
WILLIAM BOST	Master of Ceremonies



O. C. Puckett	B. Ramsden	F. Rives
B. E. Smith	L. Stillman	J. Upchurch
M. White	B. Williams	F. Windham

K. Peckham	B. Perry
J. Rhyne	B. Sanders
R. Walker	J. Welch
B. Winfree	E. Withorn

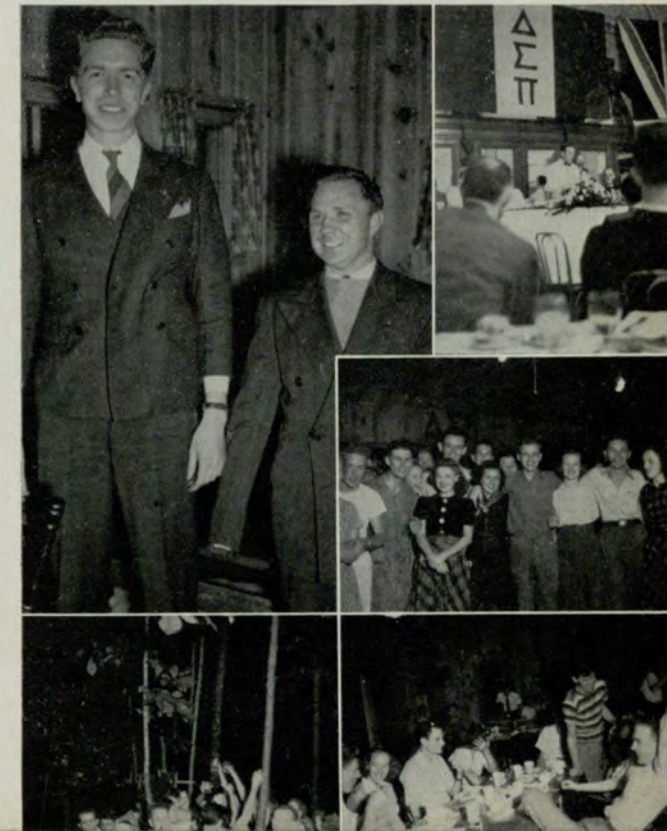


HAROLD HEMRICK  
Headmaster

## KAPPA CHAPTER

INSTALLED MARCH 12, 1921  
FOUNDED NEW YORK UNIVERSITY  
NOVEMBER 7, 1907

A fraternity organized to foster the study of business in universities; to encourage scholarship and the association of students for their mutual advancement by research and practice; to promote closer affiliation between the commercial world and students of commerce and to further a higher standard of commercial ethics and the civic and commercial welfare of the community.





# DELTA KAPPA FRATERNITY



FOUNDED MARCH 13, 1935

Colors . . . . . BLUE AND GOLD

Flower . . . . . ROSE



The purpose of the Delta Kappa Fraternity is to promote a close relationship among men, a better understanding between them as gentlemen and particularly brothers; to encourage a high code of moral conduct, constructive and ambitious activity, and to fulfill the ideals as set forth for each member of the Delta Kappa Fraternity.



## OFFICERS

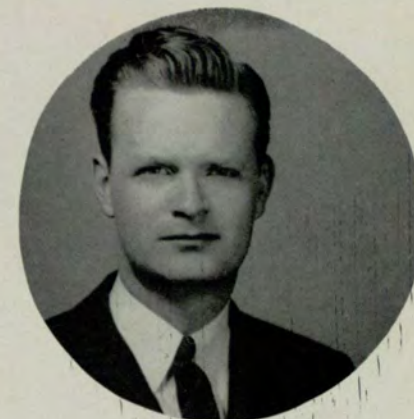
OTIS CHILDS . . . . . Governor

TOM NALLEY . . . . . Lieutenant Governor

ARTHUR FRENCH . . . . . Secretary

STANLEY BOWDEN . . . . . Treasurer

HOWARD ALLISON . . . . . Master of Rituals

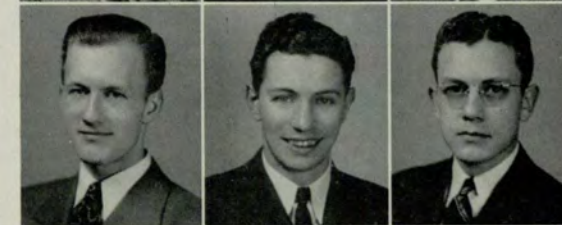


OTIS CHILDS  
Governor

Howard Allison  
Bill Borden  
Stanley Bowden



Tilden Brooks  
John Cash  
Arthur French



Ed Kilpatrick  
Tom Nalley  
O. C. Puckett



Joel Turner  
James Welch  
Bob Winfree

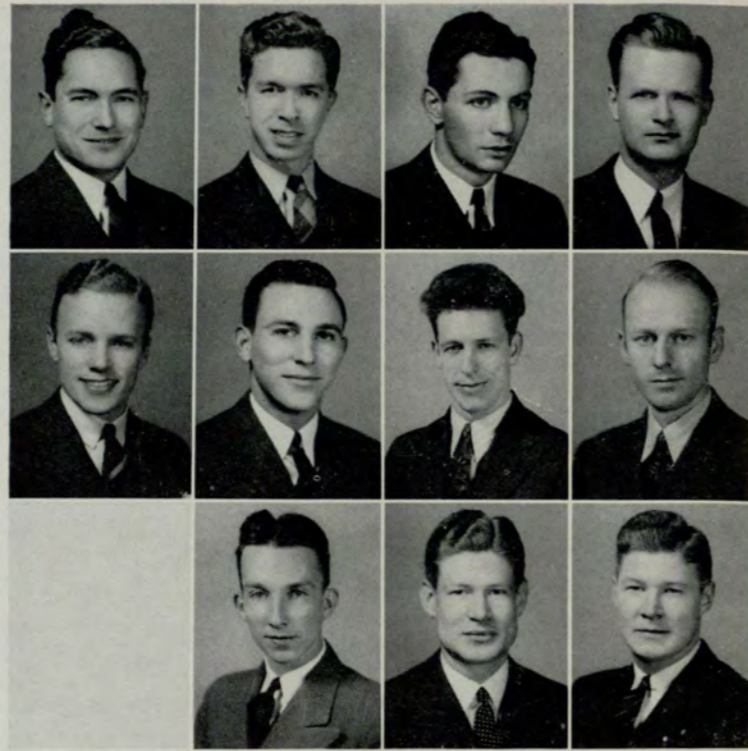


Macon Worthen



Other Members : B. Beine, B. Cloud, F. Scarborough, B. Wehunt, B. McKinley, C. Darby, K. Peckham, B. Guerin, J. Welch, M. Alspaugh.

# VENETIAN SOCIETY



E. Bolen      H. Brewer      J. Cash      O. Childs  
 E. Clark      C. Cotten      H. Duncan      H. Fenn  
                     J. Freeman      J. Griffith      B. Griffith

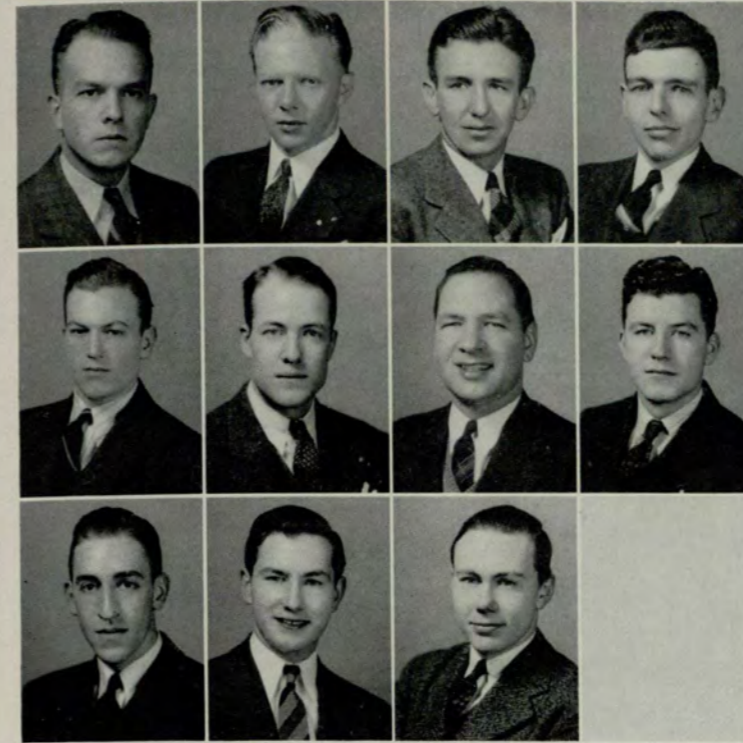
Other Members: H. Butzohn, F. Carter, T. Pierce, R. Saye,

### OFFICERS

DON WHITE . . . . . President  
 HAROLD DUNCAN . . . . . First Vice-President  
 ERNEST BOLEN . . . . . Second Vice-President  
 TOM PIERCE . . . . . Secretary  
 HOMER BREWER . . . . . Treasurer  
 AL KUETTNER . . . . . Historian



DON WHITE  
 President



B. Jordan      A. Kuettner      L. Oliver      E. Pierce  
 C. Poole      J. Redwine      L. Riden      O. C. Robbins  
 B. Sanders      C. Simpkins      L. Stillman

P. Dobbins, F. Gregory, L. Milligan, P. Otwell, C. Zimmermann.

FOUNDED AT THE EVENING COLLEGE IN 1926

The purpose of the Venetian Society is to foster in every possible way an unwavering bond of fellowship among its members and the student body of the Georgia Evening College. It shall endeavor to create a better social, educational, and civic relationship among members and students.

### SPONSORS

ELSIE SMITH  
 EUGENIA O'BRYAN



# PHI CHI THETA SORORITY



Emma Baird      Betty Beavers      Edna Cawthon      Ruby Chapman      Elizabeth Craig  
 Claire Hammond      Pickett Hynes      Willathea Jackson      Fidelis Kloeckler      Lena R. Lawrence  
 Louise Marchman      Genevieve Murrelle      Nelle Osborn      Elizabeth Ramsden      Virginia Wise  
 Other Members: Claire Christian, Margaret George, Ruth Isakson.

## OFFICERS

NELL SHROPSHIRE . . . . . President  
 FIDELIS KLOECKLER . . . . . Vice-President  
 ELIZABETH RAMSDEN . . . . . Corresponding Secretary  
 CLAIRE HAMMOND . . . . . Recording Secretary  
 LOUISE MARCHMAN . . . . . Treasurer  
 ELIZABETH RAMSDEN . . . . . Grand Councilor  
 PICKETT HYNES . . . . . "Iris" Correspondent

UPSILON CHAPTER

INSTALLED APRIL 9, 1929

FOUNDED CHICAGO, ILLINOIS, JUNE 16, 1924

Colors . . . . . LAVENDER AND GOLD  
 Flower . . . . . LAVENDER IRIS  
 Publication . . . . . "THE IRIS"

To promote the cause of higher business education and training for all women, to foster high ideals for women in business careers, and to encourage fraternity and cooperation among women preparing for such careers.

NELLE SHROPSHIRE  
President



# The HILARIAN CLUB



CLAIRE HAMMOND  
President

## OFFICERS

- CLAIRE HAMMOND . . . . . President  
 FRANCES D. PIERCE . . . . . Vice-President  
 BETTY BEAVERS . . . . . Corresponding Secretary  
 ADA GRANT . . . . . Recording Secretary  
 PICKETT HYNES . . . . . Treasurer

## HILARIAN CLUB

FOUNDED GEORGIA EVENING COLLEGE

APRIL, 1931

The purpose of the Hilarian Club is to bring together those girls who are interested in social activities at the Evening College, as well as scholastic activities; to aid these girls in forming friendships that will continue to be a pleasure to them after their graduation, and most of all to enjoy school activities together; to have dances, parties, picnics, and get-togethers outside of school; to make our college days not only a memory of scholastic deeds well done, but of good times enjoyed in the company of congenial friends.



- Betty Beavers  
 Laura Campbell  
 Edna Cawthon  
 Elizabeth Craig



- Helen Davidson  
 Dorothy Escott  
 Mable French  
 Ada Grant



- Elizabeth Harrison  
 Boots Hoage  
 Pickett Hynes  
 Ruth Isakson



- Marian Kessler  
 Louise Marchman  
 Vera Murray  
 Frances Pierce



- Nell Shropshire  
 Kay Tabor  
 Virginia Wise



Other Members : E. Ramsden, L. Mitchell, V. Turner, M. Shelton, M. Kirven  
 M. Callaway.

# DELTA LAMDA SIGMA SORORITY



FOUNDED WASHINGTON, D. C.  
IOTA CHAPTER  
INSTALLED JANUARY 28, 1934

Colors . . . . . RED AND WHITE  
Flower . . . . . AMERICAN BEAUTY ROSE

### PURPOSE

For the development of the nobler qualities of the mind and the attainment of individual and social excellence among its members.

### OFFICERS

KAY TABOR . . . . . President  
LUTA MITCHELL . . . . . Vice-President  
NELLE RUSTIN . . . . . Recording Secretary  
LOTTIE REID . . . . . Corresponding Secretary  
LOIS DOZIER . . . . . Treasurer  
VERA MURRAY . . . . . Assistant Treasurer  
HELEN DAVIDSON . . . . . Sergeant-at-Arms

KAY TABOR  
President



Frances Blackstone  
Joan Briggs  
Helen Davidson  
Jeanne Johnson



Lois Dozier  
Vadie Fleming  
Virginia Hemrick  
Marjorie Dean



Claire Manners  
Mary McDonald  
Luta Mitchell  
Vera Murray



Genevieve Murrelle  
Frances Pierce  
Caroline Reid  
Mary Shelton



Susan Smith  
Dorothy Strange  
Martha Tucker  
Helen Veal



Other Members: Frances Hunt, Clarice McGraw, Elsie Mahnks, Lottie Reid, Nelle Rustin.

# KAPPA THETA SORORITY



NELLE OSBORN  
President

## OFFICERS

- NELLE OSBORN . . . . . President  
 MARION KESSLER . . . . . Vice-President  
 MARGARET DODGE . . . . . Recording Secretary  
 KAY ALLING . . . . . Corresponding Secretary  
 PRENTISS MCINTYRE . . . . . Treasurer  
 ELIZABETH RAMSDEN . . . . . Hostess

FOUNDED GEORGIA EVENING COLLEGE JANUARY 24, 1937

Colors . . . . . GREEN AND GOLD

Emblem . . . . . CRESCENT

To aim as a sisterhood and as individuals to strengthen social ideals in their highest level, to secure the fullest in understanding, and to enjoy the finest in fellowship.

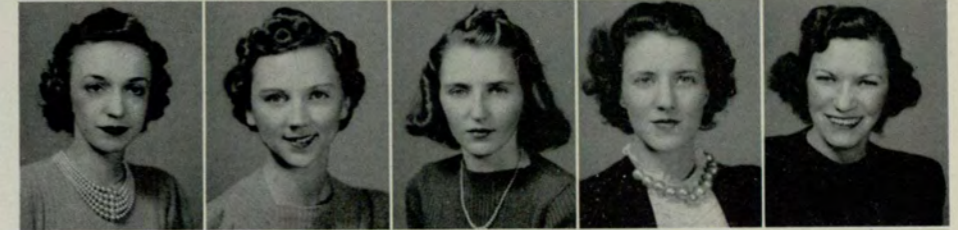
- Betty Beavers  
 Melrose Black  
 Elizabeth Craig  
 Margaret Dodge  
 Dorothy Escott



- Mary Farmer  
 Claire Hammond  
 Ruby Harper  
 Pickett Hynes  
 Ruth Jackson



- Marian Kessler  
 Louise Marchman  
 Prentiss McIntyre  
 Nelle Shropshire



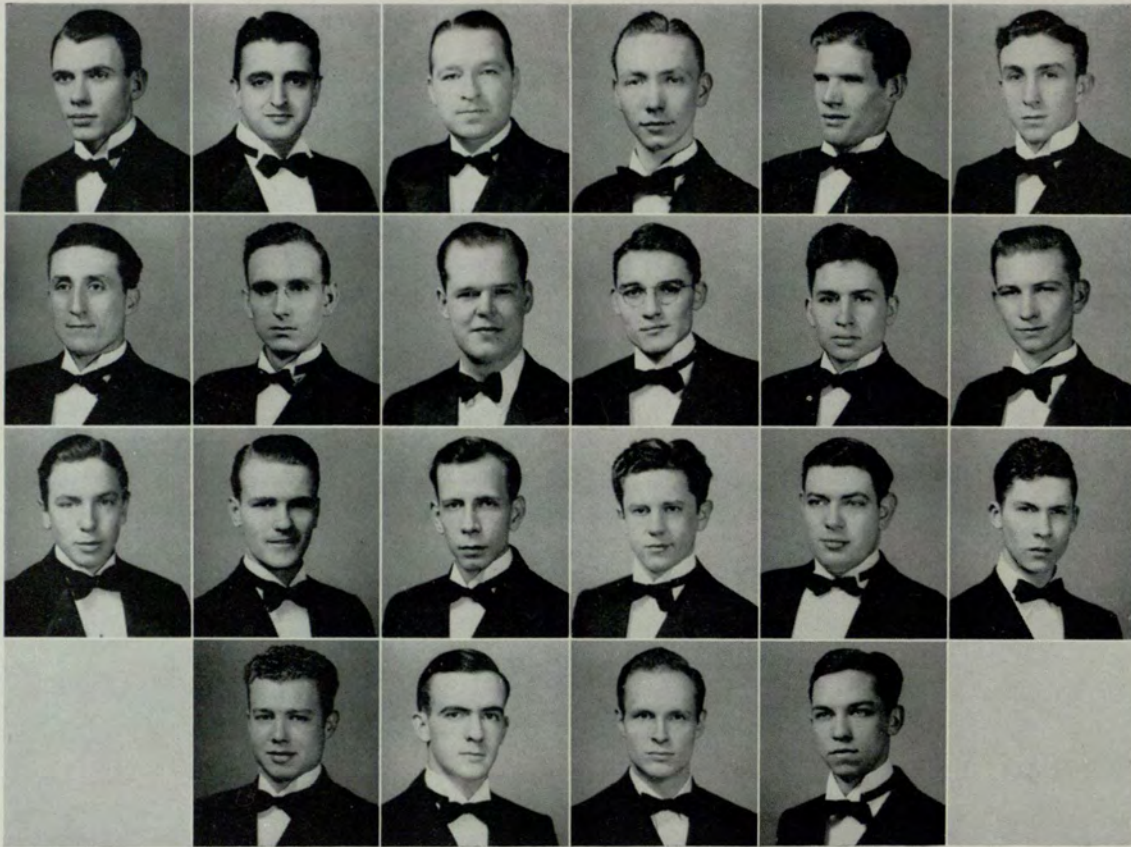
- Elsie Smith  
 Harriet Williams



Other Members: Kay Alling, Nelia Brooks, Dorothy Ganskow, Jewel Hord, Theowe Norris, Amy Dodd, Mabel Tarpley.



# GLEE CLUB



M. Alspough	M. Amato	H. Austin	R. H. Boker	H. N. Conaly	L. Davis
V. Davis	T. Flowers	J. Heath	B. Guerin	J. Howell	R. Oliver
J. Overbay	K. Peckham	J. Pittman	J. Raling	C. Sandiford	J. Singleton
	B. Smith	B. Thomas	R. H. Tyson	D. Wilder	

JOHN HOFFMAN  
Director



HOWARD GILBERT  
President

## OFFICERS

HOWARD GILBERT . . . . . President  
 MORRIS AMATO . . . . . Vice-President  
 CARL SANDIFORD . . . . . Secretary-Treasurer  
 THURXTON FLOWERS . . . . . Librarian

## FIRST TENOR

MEDFORD CONNELLY	JOE OVERBY
VICTOR DAVIS	KENNETH PECKHAM
ROBERT OLIVER	JOHN SINGLETON

## SECOND TENOR

HAROLD DUNCAN	JULIAN RAWLINGS
HOWARD GILBERT	CHARLES SNOW
JEAN HOWELL	DONALD WILDER

## BARITONE

MORRIS AMATO	BILL GUERIN
DURANT COUCH	BILL THOMAS
BOB FINCH	R. H. TYSON

## BASS

MACK ALSPOUGH	THURXTON FLOWERS
HERRIN AUSTIN	JULIAN HEATH
R. H. BAKER	CARL SANDIFORD
EMORY BELL	TOM TURNER



# SPEAKERS' CLUB



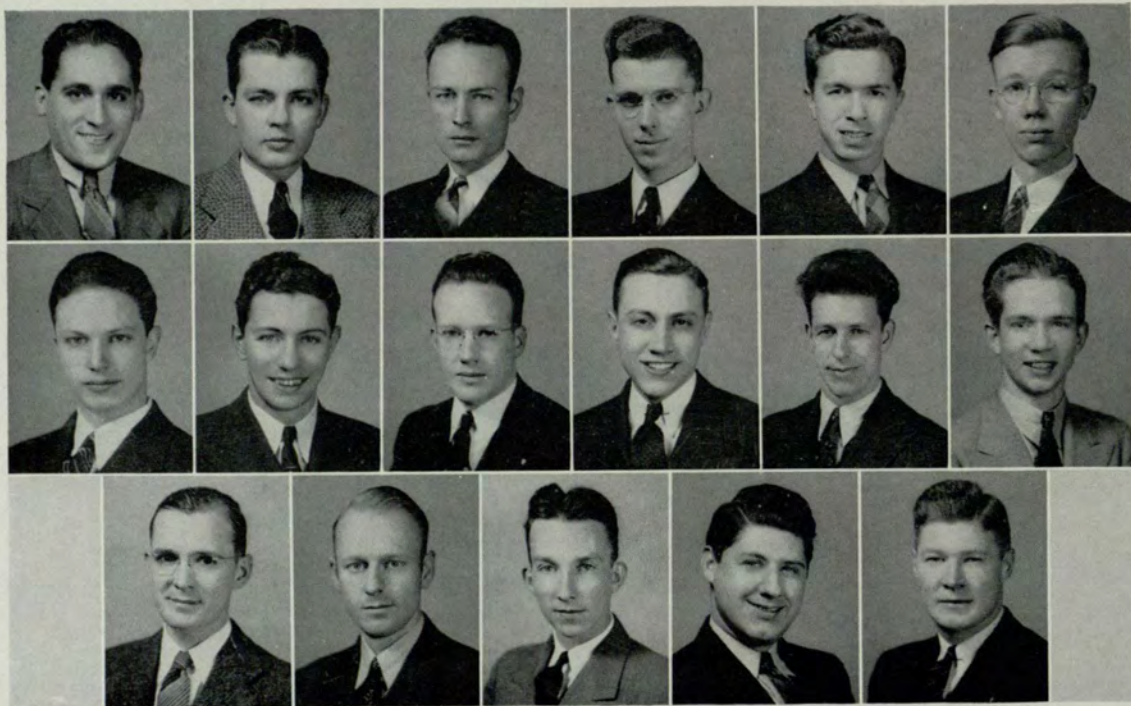
ERNEST BOLEN  
President

## OFFICERS

- ERNEST BOLEN . . . . . President  
 JAMES DAVIS . . . . . Vice-President  
 WALTER BUCHANAN . . . . . Secretary  
 BILL BOST . . . . . Treasurer  
 AL JONES . . . . . Historian

FOUNDED GEORGIA EVENING COLLEGE, JANUARY 26, 1932

The Speakers' Club was founded at the University System of Georgia Evening College for the purpose of serving the school and better fitting the Speakers' Club members for successful life work; by promoting interest in public speaking among its members; by affording to those already interested in public speaking an opportunity to improve their abilities; by encouraging participation in inter-collegiate debating; and, as a result, furthering the development of a high standard of education.



R. Abrev      G. Beckham      B. Bost      F. Brannan      H. Brewer      D. Broome  
 W. Buchanan      J. Cash      J. Clark      J. Davis      H. Duncan      G. Edwards  
 J. Ellis      H. Fenn      J. Freeman      A. Goronia      B. Griffith

Other Members: L. Burroughs, I. J. Bailey, E. Clark, T. Clark, B. Dalton.



J. Griffith      A. Jones      A. Kuettner      L. Kuyper      T. Luck      J. McNabb  
 E. Milligan      R. O'Kelley      O. C. Puckett      B. Ramsden      J. Rhyne      F. Rives  
 R. Walker      J. Welch      F. Windham      E. Withorn      B. Womble      M. Worthen

Other Members: B. Ferrell, C. Jackson, H. Merrill, M. Byrd.



# SPUR CLUB



## OFFICERS

- AL JONES . . . . . President
- HAROLD DUNCAN . . . . . Vice-President
- GEORGE BECKHAM . . . . . Treasurer
- VIRGINIA TURNER . . . . . Secretary



## FACULTY MEMBERS

- GEORGE MANNERS
- V. V. LAVROFF



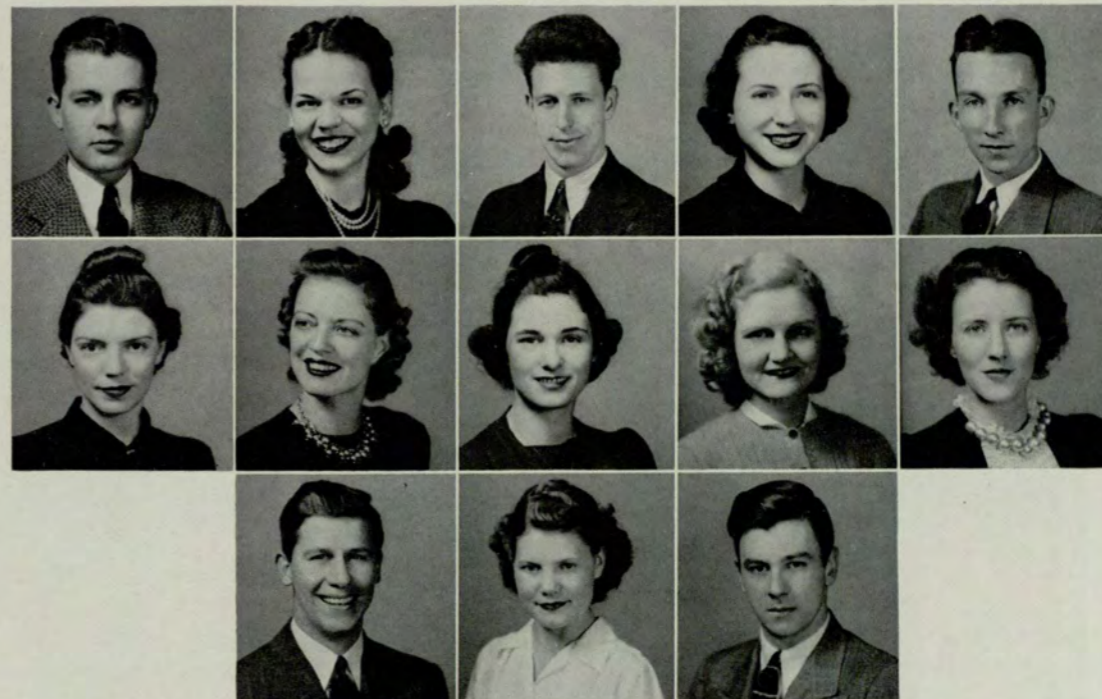
AL JONES  
President

The Spur Club, founded in 1936, has continued to fill its unique spot in the spectrum of Evening College organizations.

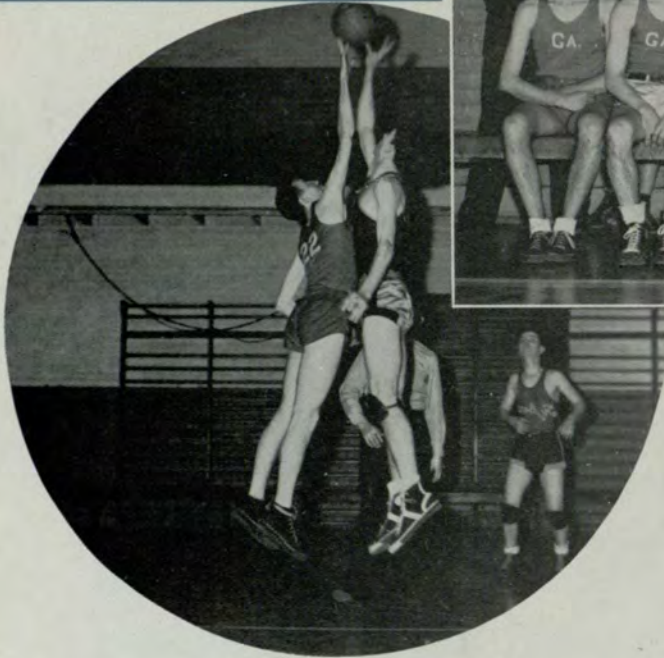
Two rides each month—one a moonlight ride—has been our goal this year. Although the weather has caused several postponements, we have had many pleasant and exhilarating rides. Some of these have been followed by a steak fry or some other form of entertainment.

The Halloween Carnival in the Little Theatre, sponsored by the Spur Club for the fourth year, was an enjoyable success, through the co-operation of other school organizations, students, and faculty.

Other Members: Nell Rustin, Virginia Turner, Britt Sanders, Fred Scarborough, Bud Wehunt, Bob Ferrell, Bob McGill, Pedro Dodys, India Upchurch.



George Beckham Boots Hoage	Margaret Bernal Verona Killingworth Joe Rhyne	Harold Duncan Claire Manners Elsie Smith	Vadie Fleming Nell Osborn Roscoe Walker	Jim Freeman Elizabeth Ramsden
-------------------------------	---	--	---	----------------------------------



## BASKETBALL

For the fifth year the Evening College has produced a varsity basketball team. Although the team this year did not win any championships, they won nine games of a 17-game schedule. They held victories over Central Presbyterian, Blackwell & Davis, Calvary, The Cavaliers, Hapeville Aces, Southern Dental College, Gasco, and the Pep Class. Gold basketballs were awarded to Paul Hickman, James Dillard, Robert Barrett, Sidney Feldman, Wallace Norris, J. H. Carswell, Lansing Murphy,

Jack Brown, Roy Elrod, and Renaldo Abreu, Manager. Coach Layton has been in charge of the team for five years.

## BOWLING

Four bowling teams competed for the honors in the Winter Bowling League which were led by Harry Cantrell, Boots Hoage, Nell Shropshire, and John Cox. Gold and silver medals were given members of the winning team; members were Cawthon, Abernathy, Cox, Hames, Lycett, Alley and Clark. In the Fall Bowling League Jack Ewing won the loving cup for the boys, and Edna Cawthon won the cup for the girls.



# S P O R T S

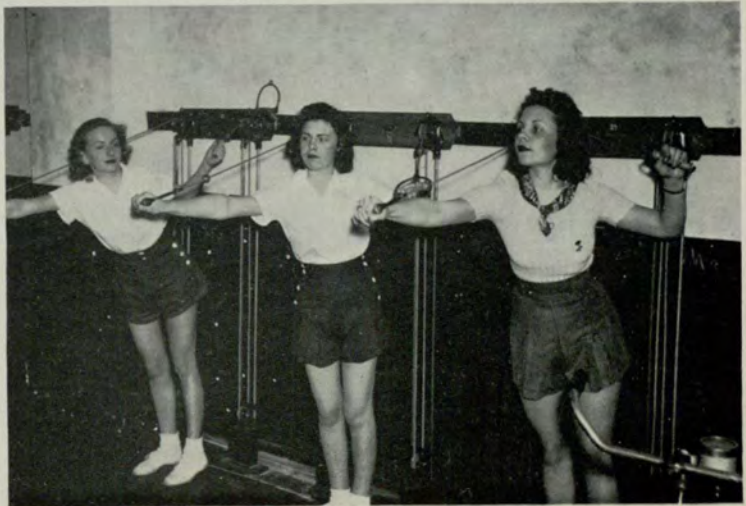


## TENNIS

The Evening College is sponsoring for the second year a tennis varsity for both boys and girls. Members of the boys' team are Fred Wilkerson, Don Floyd, Jack Bledsoe, Pugh Smith, Spencer Thompson, Malcolm Manley and Sid Underwood. To date the team is undefeated.

### TENNIS SCHEDULE

- March 28—Furman—Boys and Girls  
30—Howard—Boys  
30—Birmingham-Southern—Boys
- April 6—Emory Junior College—Boys  
13—University of Alabama—Boys  
18—Southern Dental College—Boys  
24—University of Alabama—Boys  
25—Furman—Boys and Girls  
26—University of S. C.—Boys and Girls  
27—Clemson—Boys
- May 2—Birmingham-Southern—Boys  
4—Mercer—Boys and Girls  
9—West End Tennis Club—Boys  
9—LaGrange Women's College—Girls  
10—G. S. C. W.—Girls  
11—Mercer University—Boys and Girls  
16—Emory at Oxford—Boys  
18—University of Georgia—Boys  
23—West Georgia—Boys and Girls  
25—Emory—Boys  
25—North Georgia College—Girls  
30—W. Georgia—Boys and Girls





## JUNIOR POPULARITY CONTEST

Mr. Evening College . . . James Griffith

Miss Evening College . . . Pickett Hynes

Most Intellectual Boy . . . Lee Burge

Most Intellectual Girl . . . Pickett Hynes

Mr. Adonis . . . Charlie Cotton

Miss Venus . . . Betty Beavers

School Snake . . Harold Duncan and  
Lewis Riden

School Flirt . . . Betty Beavers

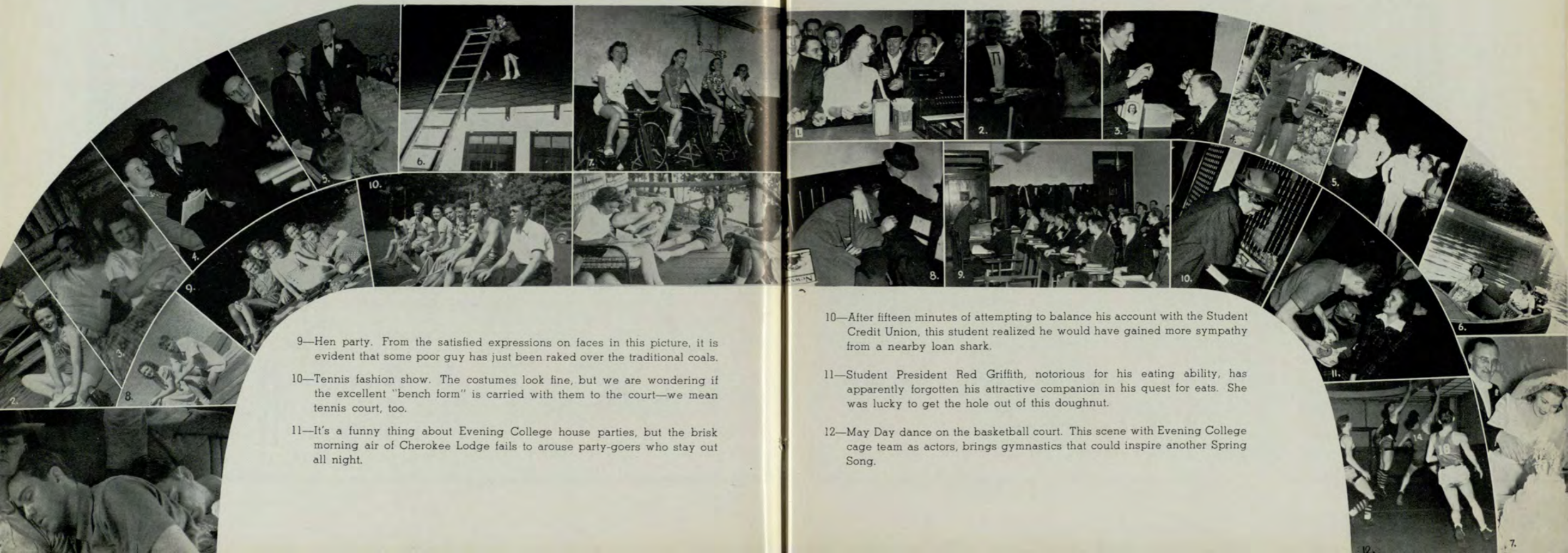


FEATURES

# HERE AND THERE

- 1—Exhausted after campaign into Yankeeland, this trio appears at last reconciled to results of the Civil War. Women of the north won a decisive victory over the Georgia Crackers.
- 2—A boat ride that evidently didn't turn out so well brought wet feet to this young lady. Accustomed to carrying car fare at home, she should have thought of water wings here.
- 3—Playboy Driskell and Glamour Girl Kay Tabor obligingly pose for Nocturne photographer. Does Jack's pocket hold check book or date book?
- 4—Between-class thought reflections: Ramsden in dreamland; Sanders: "What's the use—Life's just a joke"; Buchanan, dubiously attentive.
- 5—"What's going on up there?" A. K. Psi's diminutive Charlie Kent uses a chair to investigate reported bird's nest in Al Lee's hair.
- 6—Elopement in reverse. This evening school couple may be trying to get away from it all, but climbing to the top of a house and then pulling the ladder up behind them is a funny way to start.
- 7—Here are coeds in training after a report was circulated that "Sadie Hawkins" day would be on the Leap Year calendar.
- 8—Boy, girl, boat, lake—waiting for moon to come up. From peaceful expressions, patience must really be its own reward.

- 1—Is this the secret of Martha Whigham's popularity? Attracted by greenback, boys crowd to refectory counter, happy over prospects of free between-class dopes.
- 2—Pay day for A. K. Psi. End of annual football classic with Delta Sig finds Bill O'Callaghan (left) and Dub Thomason (center) reaping cash benefits from Jim Freeman.
- 3—Nocturne staff beauty treatment. Editor John Cash (left) holds mirror for Business Manager Charlie Cotton's periodic hair combing before evening's activities.
- 4—Women and sun won't mix. McGuire failed to heed warning of friends that he should confine activities to moonlight and submitted gracefully to this oil treatment.
- 5—Framed in dark background, these Delta Sigs and their dates make merry at one of year's outdoor social functions.
- 6—Fishing for dates was a profitable pastime on many summer house parties. These two appear confident others are around the corner, despite appearances that recent dates have decided to walk home. All seems well if boat doesn't sink.
- 7—Evening College education is the stuff, and we don't mean Mathematics. Here are results of co-operation between teacher and pupil.
- 8—The night after the night before. One too many chocolate milks (or something) sent these two heads reeling into a drunken stupor in one corner of the refectory.
- 9—From apparent interest of this group of students, professor must have substituted copy of Esquire for textbook.



- 9—Hen party. From the satisfied expressions on faces in this picture, it is evident that some poor guy has just been raked over the traditional coals.
- 10—Tennis fashion show. The costumes look fine, but we are wondering if the excellent "bench form" is carried with them to the court—we mean tennis court, too.
- 11—It's a funny thing about Evening College house parties, but the brisk morning air of Cherokee Lodge fails to arouse party-goers who stay out all night.

- 10—After fifteen minutes of attempting to balance his account with the Student Credit Union, this student realized he would have gained more sympathy from a nearby loan shark.
- 11—Student President Red Griffith, notorious for his eating ability, has apparently forgotten his attractive companion in his quest for eats. She was lucky to get the hole out of this doughnut.
- 12—May Day dance on the basketball court. This scene with Evening College cage team as actors, brings gymnastics that could inspire another Spring Song.

# Beauties



MARTHA WHIGHAM



GENE HENSLEE



EVELYN MATHIS

MARTHA KIRVEN



EUGENIA O'BRYAN



ELSIE SMITH

LUTA MITCHELL



The pictures in our Personality Section were arranged and suggested by the following friends of the Evening College :

Miss Louise Mackay, Society Editor, Atlanta Journal

Miss Yolande Gwin, Feature Writer, Atlanta Constitution

W. M. Hines, City Editor, Atlanta Constitution

Fred D. Moon, City Editor, Atlanta Journal and another Friendly Reporter



GENE MILLARD

KAY TABOR

BETTY BEAVERS







A D S

---



189-191 PEACHTREE ST.

ATLANTA

---

An Organization Specializing EXCLUSIVELY in the  
Production and Serving of Wholesome Food

STEEL  
BY  
CALVERT

RA. 5121 :: ATLANTA, GA.

---

The Real Pick-up Until After School...

ARISTOCRAT CHOCOLATE

Served at the Refectory

**Aristocrat Dairy Products**

165 Haynes St., S. W.

Home Deliveries

MAin 3453

THE BEST DRESSED MEN WEAR



THE SCHWOB CO.

TWO STORES

91-93 Peachtree Street, N. E.

Mitchell & Broad

ATLANTA

GEORGIA



# **MONTAG'S**

Fashionable

Writing

Papers

**School and College Stationery**



**MONTAG BROTHERS, Inc.**

ATLANTA



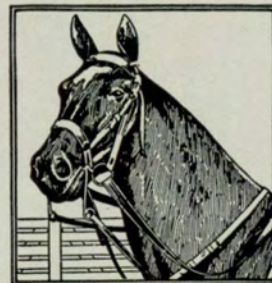
**Students Supplies**

Featuring

The Famous

**BLUE HORSE**

Brand



THE KIND YOUR MOTHER AND DAD USED

BUY YOUR  
HOME FURNISHINGS

*from*

NO  
INTEREST!  
NO  
CARRYING  
CHARGES



OUR  
TERMS  
EASIEST  
IN  
ATLANTA

WHITEHALL AT MITCHELL

*Happy Birthday in March  
Birthstone is Bloodstone*



**T**HE QUALITY of Holzman diamonds has become a tradition with people who appreciate the splendor of fine stones. Our complete selection of diamond rings range in price from \$25 to \$1,000.

*Miss Christine Wing, former Evening College student, will be pleased to help you with your selection.*

It's Easy to Own Fine Rings On Holzman's Monthly Budget Plan.



*Enjoy a Delicious  
Luncheon at—*

*Ellen Rice  
Tea Room*

63½ POPLAR ST. AT FORSYTH  
JA. 4181



We Are Glad to Serve Evening  
Parties, Dinners, etc.



## GOLD SHIELD Launderers and Cleaners

TRIO  
AMERICAN  
PIEDMONT

CAPITAL CITY  
DECATUR  
MAY'S

TROY  
GUTHMAN  
EXCELSIOR

Atlanta, Georgia

*The South's Largest Department  
Store of Homefurnishings.*





## RCA Victor Radios

Goodrich Tires, Batteries, and over 2000 items  
for the automobile and home . . . Bicycles, Toys,  
Sporting Goods, Oils, Seat Covers, Horns, etc.

## ECONOMY AUTO STORES

WHITEHALL STREET AT MITCHELL

and

741 MARIETTA STREET ( <sup>Near</sup> Ponders Ave. )

## HOLSUM FOOD

## IS GOOD FOOD

*You can save \$80 to \$100 a year*

*by eating at*

## HOLSUM CAFETERIA

181 PEACHTREE STREET





# ALBERT L. JONES

*RADIO SERVICE*

Expert Service on All Makes Radios

ESTIMATES      WORK GUARANTEED

221 MARIETTA ST.

## Baxter Maddox Agency

LIFE INSURANCE AND  
ANNUITIES

*The Connecticut Mutual Life Ins. Co.*

1001-6 C. & S. Bldg.      WA. 1855-6

*Eat at*

Atlanta's newest and most  
Beautiful Cafeteria

## WOODINGS

39 MARIETTA

Three Meals Daily

Free Parking after 5 P.M.

*We cater to special parties and banquets*



Pure  
refreshment

Compliments

of

J.P. ALLEN & CO.  
*Atlanta*

Make BRYANT Headquarters for  
your ENTIRE office needs . . . .

COMPLETE LINE  
of  
OFFICE SUPPLIES

PRINTING  
LOOSE LEAF SYSTEMS  
STEEL FILING EQUIPMENT  
POSTURE CHAIRS

Exclusive factory distributor for  
Old Town High Grade Ribbon  
and Carbon Papers.

BRYANT LITHOGRAPHING  
COMPANY

MA. 2800      136½ Marietta Street  
ATLANTA, GA.

# Melba Cafeteria

ONE OF ATLANTA'S FINEST EATING PLACES

*Specializes in Best Quality Food Obtainable*

Located Conveniently for Evening College Students

Volunteer Bldg., Cor. Luckie and Forsyth Streets

*Look for the RED truck  
then BUY*

**GORDON'S**

*fresh*

Potato Chips

Salted Peanuts

Peanut Butter Sandwiches

Cakes and Cookies

**SCHNEIDER & SON**

JEWELERS

109 Peachtree St., N. E.

ATLANTA, GA.

FASHION PARK CLOTHIERS

**DeFOOR, INC.**

121 Peachtree Street

ATLANTA

SUITS

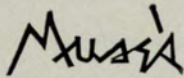
FURNISHINGS

HATS

SHOES

DRESS THE PART  
YOU WANT TO  
PLAY . . . IN A  
NEW MUSE SUIT!

*Visit Cliff Ray  
3rd floor  
Our Evening  
School Representative*

The logo for MUSE, featuring the word "MUSE" in a stylized, handwritten font with a small figure of a person running or jumping above the letter 'S'.

*The Style Center of the South*

*It's Smart  
to Dine at*

## Peacock Alley

where the food and  
service is always good.

—::—

PLANKED STEAKS  
With all the good things that  
go with it . . . 75¢

*Prices Reasonable*

BOWL . . .  
*The Right Way*

AT  
**BLICK'S**  
(4 convenient centers of activity)

King Pin, 8 alleys . . . . . 840 Gordon Street, S. W.  
Lucky Strike, 28 alleys . . . . . 671 Peachtree Street  
Bowling Palace, 12 alleys . . . . . Briarcliff Plaza

BOWLING CENTER  
52 Alleys, 20 Houston St.

(Largest one-floor bowling center in the world)  
100—N.D.P.B.C. Sanctioned Alleys—100

*Compliments of*

LOUIS BATES, Mgr.

**The Volunteer  
State Life  
Insurance  
Company**

516 Volunteer Bldg.  
MA. 4801

*Compliments*  
*of*  
**Goodyear Service**

222 Spring St., N. W.

---

**Bill Clarke**  
**and**  
**His Orchestra**

VE. 2672

Good Food Well Prepared  
**Lucy Wood Cafeteria**

PEACHTREE AT CARNEGIE WAY

Under the Personal Supervision  
**LUCY WOOD, B.S.H.E.**  
University of Georgia

---

**Binder's**

74 N. Broad St.

*Special prices on framing  
Diplomas, or Pictures for  
Evening College Students.*

**Ansley Hotel**

Just around the corner from the Evening College.  
Ideally located for Fraternity, Sorority and  
other organizations' banquets, dinners, etc.

**L. S. TUCKER,**  
Manager

WE wish to take this opportunity to thank our friends and patrons — the Advertisers — for their cooperation and loyalty to the Georgia Evening College. Their friendship and generosity is shown on these pages of advertising.

A student body, with a buying power of approximately \$50,000.00 a month, will show its appreciation to you through their business with you each day of the year. May your thoughtfulness build business and prosperity for you in the days and years to come.

The Nocturne Staff.



# RICH'S

*Headquarters*

*for*

## ***RCA VICTOR RECORDS***

***. . . and Record Instruments***

The great orchestras and artists record for RCA Victor, and music lovers know that Rich's is the place to find a most complete selection. The RCA repertory includes everything from Bach to syncopated rhythm, and we are prepared to help the musically perplexed, whether in search of a prized and rare classic or the latest modern, popular and swing records.

RCA Victor Bluebird Records  
35¢, 3 for \$1

RCA Victor Records, 75¢ and  
up

RCA Victor Record Players,  
\$9.95

*RCA Victor Records  
Rich's Sixth Floor*



# RICH'S



RICH'S . . . a pioneer institution in a growing Atlanta since 1867, congratulates the Georgia Evening College as a fellow pioneer whose field is education. Your success is based upon a firm foundation of service to this great community, and your continued growth will be insured by a broad vision of educational developments. Your opportunity is unequalled, and we wish you well as you turn with us to an even greater tomorrow!

**RICH'S**



# COX'S PRESCRIPTION SHOP

Next to Paramount Theatre

QUALITY DRUGS—SODA FOUNTAIN, LUNCHEONS

*Go to Cox's Record Department for the latest hit tunes on  
Victor and Bluebird Records*

Evening College Students

*recommend*

Original Waffle Shop

"MEET THE GANG"

After Dances, Shows, and Even Get a  
Delicious Steak After Studying

*Excellent Food      Reasonable Prices*

62 PRYOR STREET

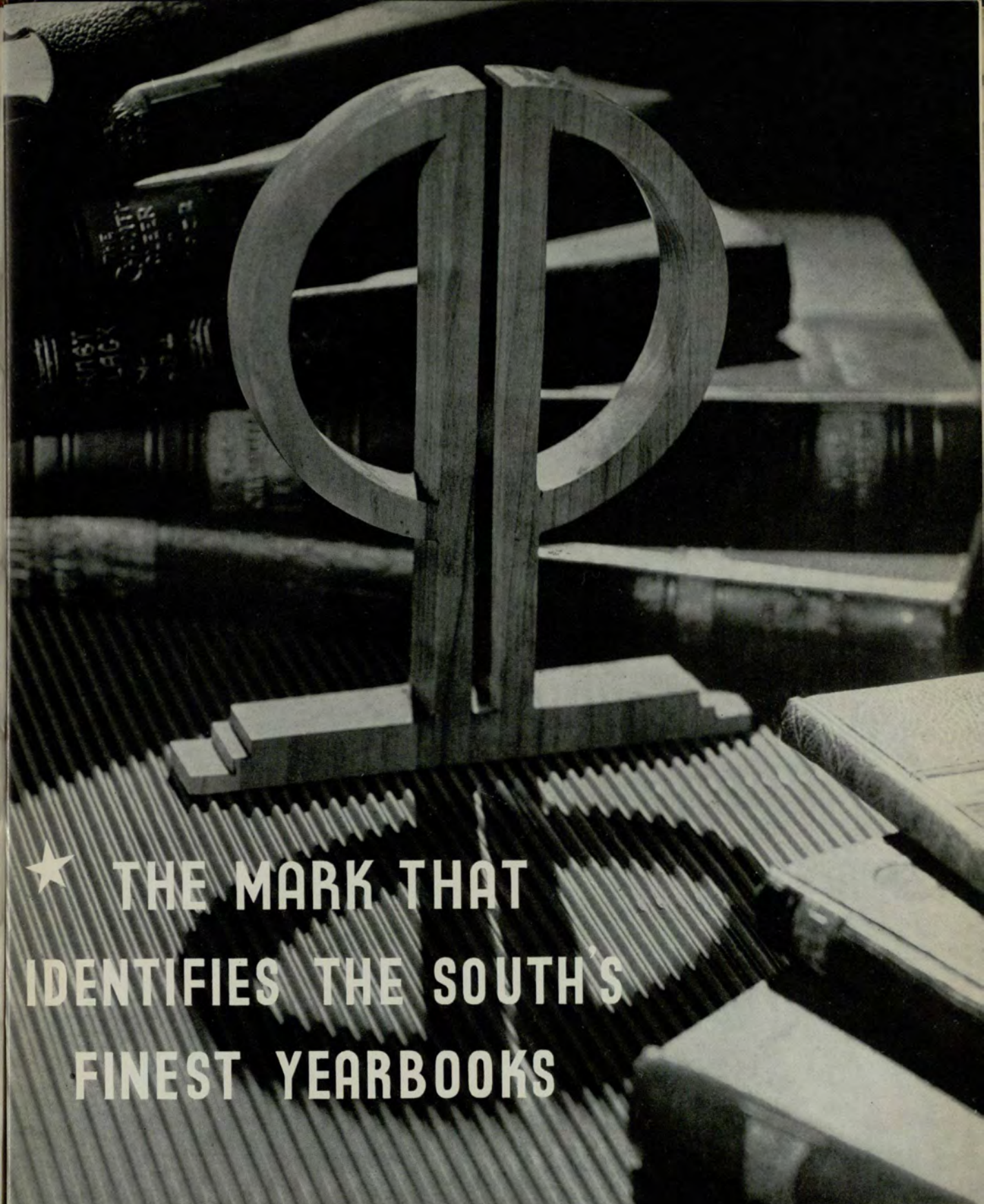
Johnny Chotas, *Manager*

Phone MAin 1010

EARL G. DOWDA  
OPTICAL CO.

132½ Whitehall St., S. W.

ATLANTA, GA.



★ THE MARK THAT  
IDENTIFIES THE SOUTH'S  
FINEST YEARBOOKS

PHOTO-PROCESS ENGRAVING CO.

115 - 119 LUCKIE STREET ★ ATLANTA GEORGIA

*All portraits in this book  
made by*

**GASPAR-WARE  
STUDIOS**

30-32 FIFTH STREET, N. W.

Atlanta, Georgia

*Official Photographers For*

**THE NOCTURNE**

All Nocturne negatives are held in our files for several years and personal photographs can be obtained at any time.

Write us for information and special price list.

# University System of Georgia

University System of Georgia Center, in Atlanta

## EVENING COLLEGE

and

## JUNIOR COLLEGE DAY CLASSES

### CO-EDUCATIONAL

Day and evening classes are given to meet the needs of students as follows:

1. Those who wish to take work for University credit toward the degrees of Bachelor of Arts, Bachelor of Science in Commerce, Bachelor of Arts in Education, and Bachelor of Science in Education.
2. Students who wish to receive the degree of Bachelor of Commercial Science, through the Evening College, for work done entirely in the University Center in Atlanta.
3. Students who wish to complete work for a Junior College Diploma of graduation from the University System of Georgia in the fields of Bachelor of Arts, Bachelor of Science, Bachelor of Arts in Education, Bachelor of Science in Commerce, and Bachelor of Science in Education.
4. Students who wish to complete work for a Certificate in Business Administration or for a Certificate in Secretarial Training.
5. Special students taking selected courses and not having in view an extensive program of study.

*Earn While You Learn . . . Learn While You Earn*

*Success . . .*

is an important factor in the life of every student, regardless of the field of occupation he may choose to enter.

We made our choice . . . *The Printing Industry* . . . Many years of concentrated efforts to succeed have accounted for our modern equipped plant with capable workmen to fulfill the requirements necessary for annual production.

Complete service coupled with the experience and cooperation of competent, expertly trained men is the formula for successful annuals.



*The Stein Printing Company*

161 LUCKIE STREET, N. W.

ATLANTA, GA.



