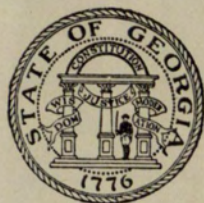


*The
Nocturne
1941*





University System
of Georgia

UNIVERSITY SYSTEM
CENTER LIBRARY
ATLANTA

~~378.73
Neduma
1941
C. 2~~



The Student Council
of
GEORGIA
EVENING COLLEGE



LIBRARY
UNIVERSITY EXTENSION
FILER - ATTEND

Presents . . .

24447




YB
DIREKT
STADT



Six o'clock . . . Bells . . . Rush,
rush, rush . . . Mobs . . . Get
out of my way . . . Dates . . .
Meet me in the Refec . . .
Work, work, slave, exams . . .
Dances . . . Buy a ticket . . .
Elections . . . I'm sleepy . . .
Politics . . . Swell bunch of
students . . . Nocturne.

T H E



Nocturne

F O R 1 9 4 1

AL KUETTNER
EDITOR

CHARLES T. DARNELL
BUSINESS MANAGER



Close Friends . . .

Attracted to Georgia Evening College through their desire for a wider knowledge, students are invariably drawn into the closely-knit bonds of a possession even more priceless than culture—Friendship—and with it Understanding. In many cases, devotion which time cannot erase has come to life in the Mazda-lit hallways of our college. No feeling is more secure than the handclasp of a true companion, no theme more warm and alive than Friendship.

LD/1961
G83-N6
1941
C2

LD 1965
.N63
1941
C.2

In Dedication . . .

There was a man, young, stalwart and clear of vision. In his veins coursed the rich blood of American forebears; in his heart beat the love of friends, the devotion to school, the optimism of youth; in his mind burned a desire to make a better man of himself, a better school for his culture, a better community for his home.

In that spirit he worked and studied and dreamed. And his dreams were beginning to precipitate into deeds. And the world was a good place.

But into his life came the sound of trumpets—his country's call to defend his native shores against an enemy who sought to destroy the principles by which he lived. The call was answered, and for books he took a gun, for tuxedo a uniform, for freedom of action the discipline of army and navy.

To this man and these men of Georgia Evening College, this book is doubly dedicated: as a tribute and as a magnet which will draw them back into these halls of learning when the day of evil is at an end.

Wallace Norris, the Nocturne's Associate Editor, a combination of all the lines of character which make this school the warm, friendly place it is, deserves a special mention.

Although his body is cloaked in the uniform of the United States Navy, his heart and soul are in this book. Without his faithful and valuable assistance, its publication would not have been possible.

—The EDITOR.

—R. LIVINGSTON



Teachers . . . Where's his class
. . . He's pretty good - and easy
. . . Dull course . . . Tonight's
the night . . . Lodge . . . Class
party . . . Dance . . . Dance
. . . Cute date . . . Oh, my head
. . . Buzz . . . Buzz . . . Blooie
. . . Who turned out the lights!



O U R C O L L E G E

INTIMATE GLIMPSES OF SCHOOL AND FACULTY



THE POWERS POSED AND AT EASE



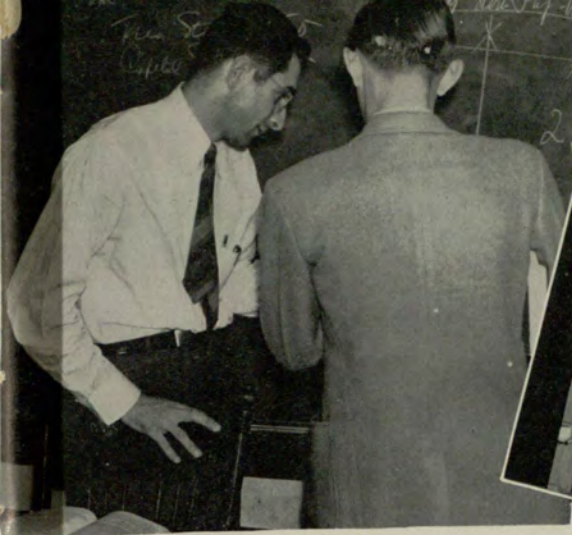


The Powers

DR. GEORGE M. SPARKS
*Director and Guiding Force
of Georgia Evening College.*



T. M. McCLELLAN, Registrar
*He is right-hand man of director
and first to whom students turn
for advice and encouragement.*



Camera Snaps on Faculty Row



READING FROM TOP: Manners helps a student over difficult problem; Ajax calls for the evening mail and class roll at faculty pigeon holes; Campbell and favorite pupil, who never talks back, is always on time; Dennison on a walkout—it's nine o'clock; Nurse Tallant swabs a pupil's throat.



AJAX

BREWER

BRIDGES

BROWN



CHAPIN

DENNISON

ELLIOTT

EMERY



ENLOW

FLOYD

FOLK

HEFNER



Faculty Roll

F. W. AJAX, A.B., M.A., Emory University, University of Chicago.

L. T. BATES, A.B., M.A., Emory University.

C. R. F. BEALL, M.D., Vanderbilt University.

MISS MINNA BECK, B.S., Fine Arts, Columbia University; M.A., Fine Arts, Columbia University.

PROF. K. WADE BENNETT, A.B., Southern Methodist University; M.A., Northwestern University.

DR. J. E. BOYD, A.B., University of Georgia; M.A., University of Georgia; Ph.D., Yale University.

R. C. BREWER, A.B., University of Kentucky, University of Wisconsin.

MISS EUGENIA BRIDGES, A.B., Agnes Scott College.

J. C. BROWN, B.S.E.E., B.C.S., Georgia School of Technology, Georgia Evening College.

PROF. H. O. BURGESS, B.S., Alabama Polytechnic Institute; A.M., Emory University; Ph.D., George Peabody College for Teachers.

E. G. CAMPBELL, A.B., M.S., Ph.D., Hiram College of Ohio, Perdue University, University of Chicago.

W. C. CANTRELL, A.B., M.A., LL.B., University of Wyoming, Atlanta Law School.

L. W. CHAPIN, A.B., M.A., Emory University, Harvard University, University of Chicago, University of North Carolina.

R. A. CHRISTOPHER, B.S.C., University of Georgia.

H. E. DENNISON, A.B., University of Tennessee, Graduate Work, University of South Carolina.

H. B. ELLIOTT, B.C.S., M.S.C., C.P.A., Georgia School of Technology, University of Georgia.

E. H. EMORY, A.B., B.S., Mercer University, Georgia School of Technology.

E. R. ENLOW, A.B., M.A., Ph.D., Wheaton College, Emory University, Peabody College.

E. L. FLOYD, A.B., M.A., LL.B., University of Georgia.

E. H. FOLK, JR., A.B., M.A., University of South Carolina, Princeton University.

MRS. A. G. GREGORY, A.B., B.M., Centenary College, Graduate Work, Centenary College.

R. A. HEFNER, B.S., S.M., Ph.D., Roanoke College, University of Chicago.

J. D. HOFFMAN, Music Director, Atlanta Conservatory of Music, Musical College of Chicago; Franc Prochovski, New York; Robert Clarke, St. Louis; Will-Ford Watters, Atlanta; William Claire Hall, Chicago.

L. R. HOGAN, A.B., M.A., LL.D., Mercer University, University of Chicago, Columbia University.

R. R. HOLLINGSWORTH, A.B., M.A., Ph.D., Emory University, University of California.

MRS. J. B. HOSMER, A.B., Fine Arts Certificate, Washing on University, St. Louis School of Fine Arts.

HAL HULSEY, A.B., M.A., University of Georgia, Graduate Work, University of Georgia, Emory University.

H. R. HUNTER, A.B., M.A., Ph.D., Duke University, Columbia University, Emory University, Georgia Peabody College.

MISS PICKETT HYNES, B.C.S., University System of Georgia Evening College.

V. V. LAVROFF, Junior College, Harbin, China, B.S.C., M.A., Georgia School of Technology, Emory University.

W. P. LAYTON, Director of Physical Education, B.Ph., Emory University.

J. N. LeCONTE, A.B., M.S., Ph.D., Emory University, University of North Carolina.

B. E. LINDSEY, A.B., M.S.C., University of Kentucky, University of Georgia.

W. F. LOZIER, A.B., LL.B., Columbia University.

E. M. LUSINK, B.C.S., Georgia School of Technology, Graduate of Rochester Atheneum Institute, Pupil of Edwin S. Siebert.

GEORGE MANNERS, B.S.C., C.P.A., University of Georgia.

T. M. McCLELLAN, B.S.C., M.S.C., Georgia School of Technology, Graduate Work, New York University.

J. E. MAYO, A.B., M.A., C.P.A., Mercer University.

CARL MAUELSHAGAN, A.B., M.A., Ph.D., University of Tennessee, University of Chicago, University of Minnesota.

R. C. MÖOR, B.C.S., University System of Georgia Evening College.

MRS. R. T. MORENUS, B.A., Westhampton; M.A., Columbia; Graduate Work, Emory University; Graduate Work, University of Puerto Rico.

PROF. WADE PERRY, A.B., Clemson College.

GEO. H. RICHTER, JR., A.B., University of Georgia; A.B.L.S., Emory University.

J. E. ROUTH, A.B., Ph.D., Johns Hopkins University.

H. O. SMITH, A.B., M.A., Harvard University, Emory University, Graduate Work, University of Georgia Evening College.

WILLIAM SMITH, B.C.S., Georgia School of Technology.

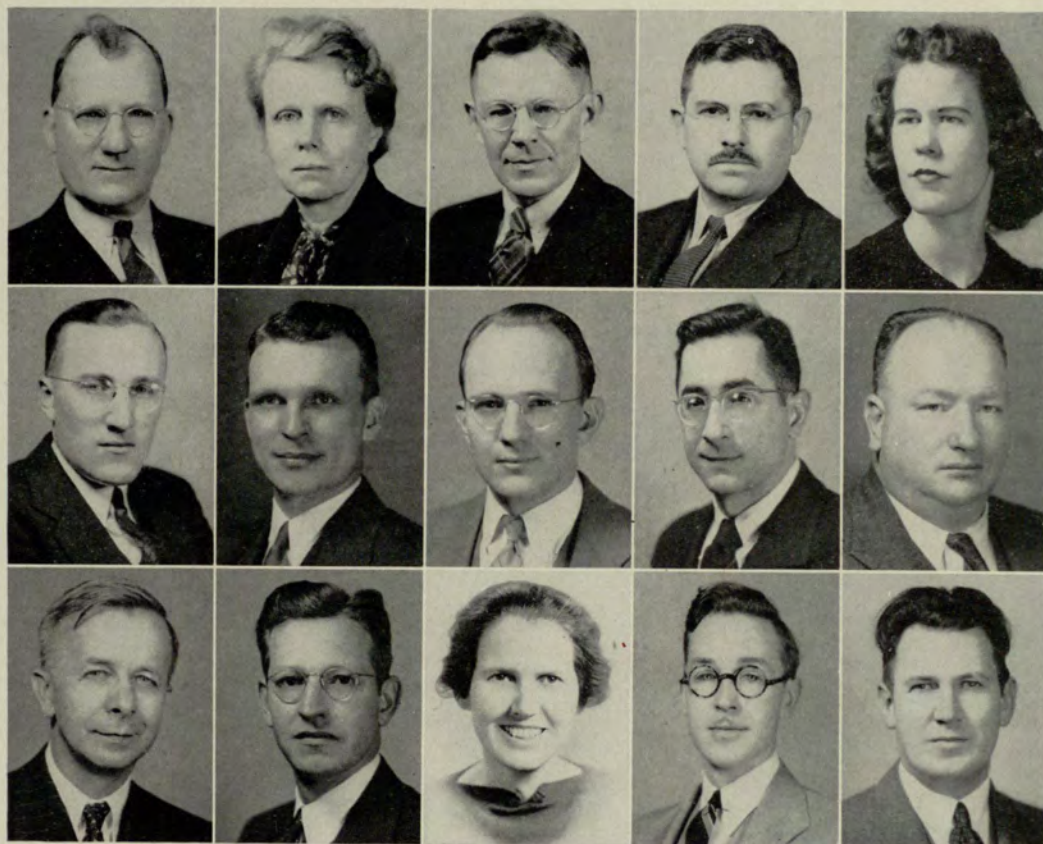
G. M. SPARKS, A.B., M.A., LL.D., Mercer University, England, Oxford.

MRS. LINNIE TALLANT, R.N.

NELL HAMILTON TROTTER, A.B., M.A., University of Arkansas, University of Wisconsin, Dean of Women.

A. J. WALKER, A.B., M.A., Ph.D., Emory University, Harvard University.

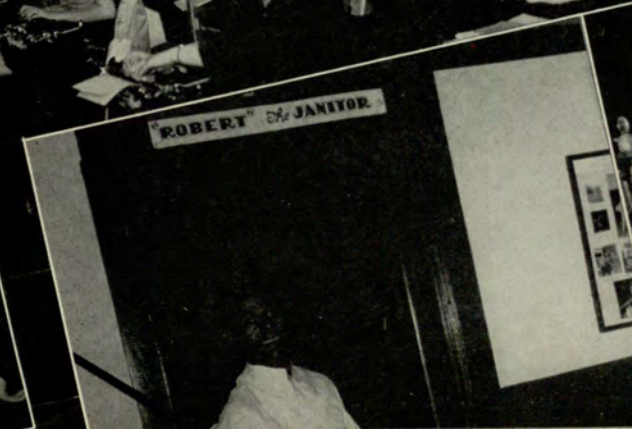
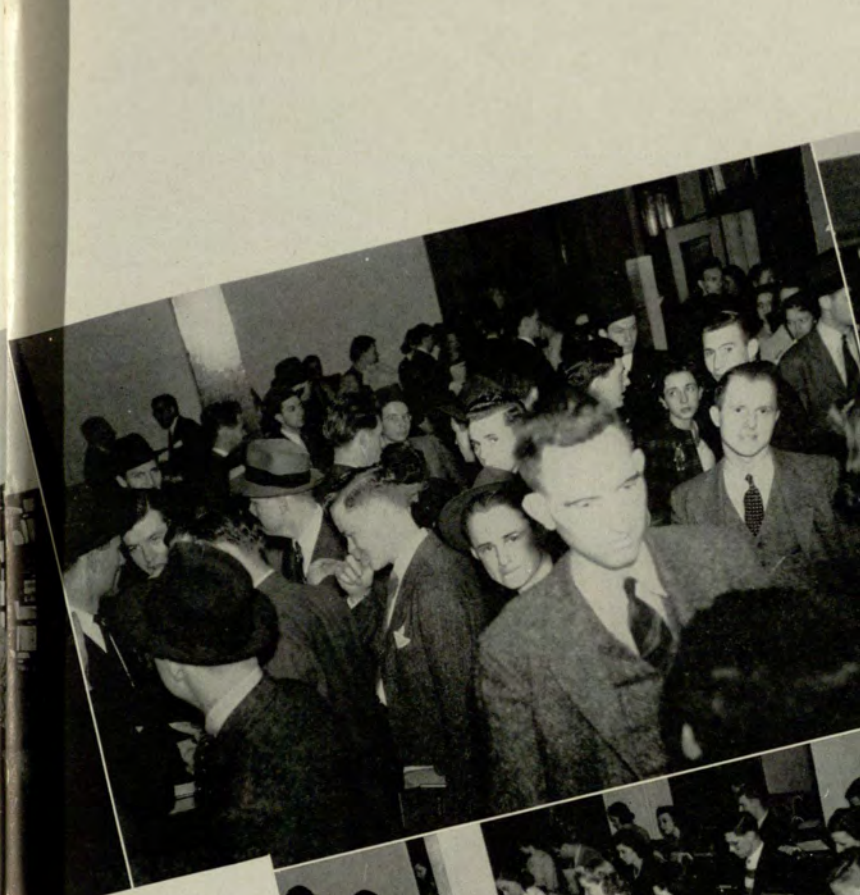
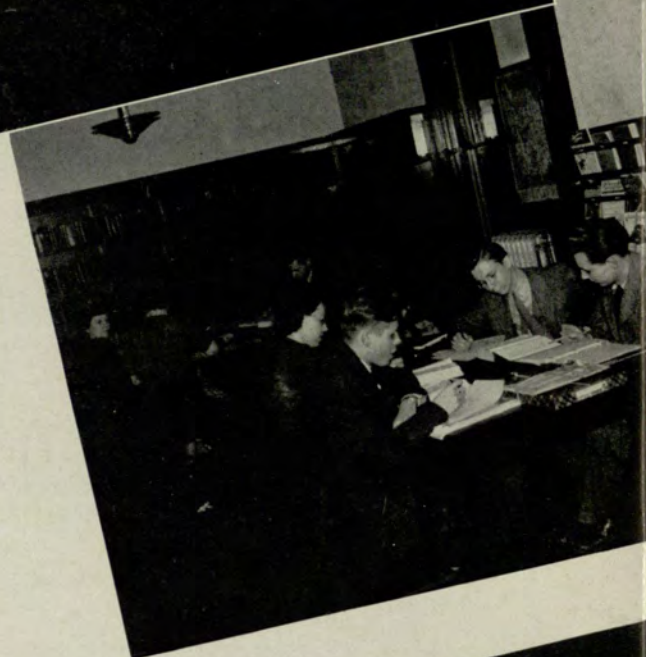
NOAH WARREN, B.S.C., M.A., C.P.A., Georgia School of Technology, Emory University.



Reading from top left: Hollingsworth, Hosmer, Hulsey, Hunter, Hynes, Lavroff, Layton, Lozier, Manners, Mayo, Mauelshagen, Will Smith, Trotter, A. J. Walker, Warren.



With the most familiar of all scenes to GEC students in dominant place, here are tri-weekly experiences as the camera sees them . . . NOCTURNE flash bulbs kept dark corners lighted, interrupted many classes during Spring quarter.



Top row: GEC students catch up on extra reading in third floor library, new addition to school . . . hallway jam—between classes lobby of school is bedlam . . . Bolen stands first in Credit Union line. Below: Chris serves customers at refectory counter . . . typing class and the cleanup squad . . . “Bunny” Rogers mixes smelly concoction in Chemistry lab . . . LaConte watches.

The Lodge

Down from top shot of piano jam session at lodge . . . McDaniel, Moore and Johnson distressed over after-party dishes . . . Norris surrounded by—well, you can see, can't you . . . Jimmie Moore, Henry Lycett and Smitty turn the steaks on lodge stove . . . Down from the halls of learning: McWaters, Hoffman, Ivey, Tabor, McDaniel, Norris . . . Shall we eat—lodge party converges on serving table.



"The Lodge is Reserved" became a pass word for good times at Evening College this year. Most classes plus numerous organizations held affairs at Indian Creek Lodge, remodeled and enlarged to increase benefits to students. The tiny mascot for this page is charming daughter of Professor Will Smith. She symbolizes here memories and fun at the lodge.

They Pass Before The Nocturne Lens . . .

Spur Club, worn out after a long ride . . . GEC Owls—things are looking up . . . Mayes and Escott talk things over . . . Down from the tower shot of houseparty takeoff . . . Clark, Smitty and Whatzit . . . Millard stranded . . . Are these woodland nymphs? . . .

Ramsden and Jones . . . Phi Chi Theta officers leave meeting . . . Black, Mayes and Escott look out over the city . . . Venetian neophytes pour buttermilk for Robbins, member . . . Sorority either looking for ants or engaging in game of chance . . . Landis, Ripley and Jordan . . . GEC basketeers spell the jinx for opposition in pre-whistle handshake . . . Amato strums out a tune for Vagabond King.





Books, books, books . . . Got a quiz . . . Classes, exams . . . Can't cut tonight . . . Where's your class card . . . Nod, snore, snore . . . Meet me after class . . . Study . . . Study . . . Aw, what's the use . . . Do it tomorrow.



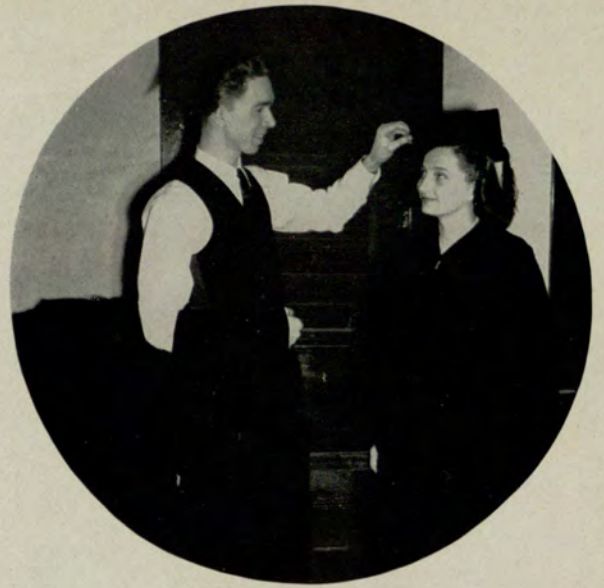
LIBRARY
UNIVERSITY EXTENSION
1120 - ATLANTA



O U R C L A S S E S

THE STUDENTS — ACCORDING TO THE DEGREE OF THEIR SEARCH FOR KNOWLEDGE





The Fitting Room: Two seniors caught in a pre-graduation try-on of vestments.



Class officers inspect their class ring, appear proud of this recognition which will tell the world they have graduated.

OFFICERS

- HOMER T. BREWER *President*
- CHARLES T. DARNELL *Vice-President*
- KAY TABOR *Secretary*
- ELIZABETH RAMSDEN *Treasurer*

BREWER

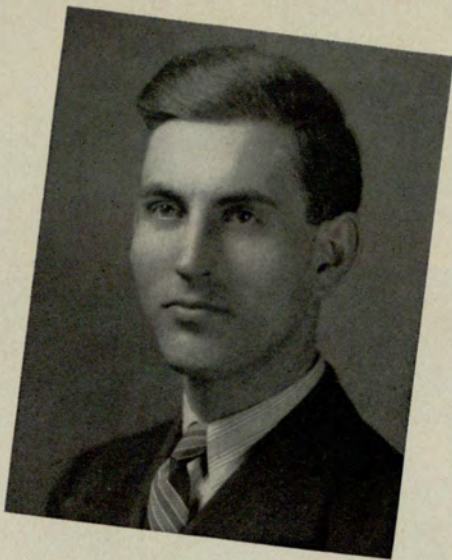
DARNELL

TABOR

RAMSDEN



Seniors



JACK ADAMS



EMMA SUE BAIRD

JACK M. ADAMS, B. C. S., Atlanta Chemical Company, Delta Mu Delta, President 1940-41 . . .
EMMA SUE BAIRD, B. C. S., Fifth U. S. Civil Service District, Hilarian Club 1939-40, Crim-
son Key 1939-41, Phi Chi Theta 1939-41, Corresponding Secretary 1940-41; Bowling 1939-
41 . . . KATE RUTH BEAN, B. C. S., Atlanta Public School System . . . PAULINE BERRY, B. C. S.,
Austell Public Schools.



KATE RUTH BEAN



PAULINE BERRY

Seniors

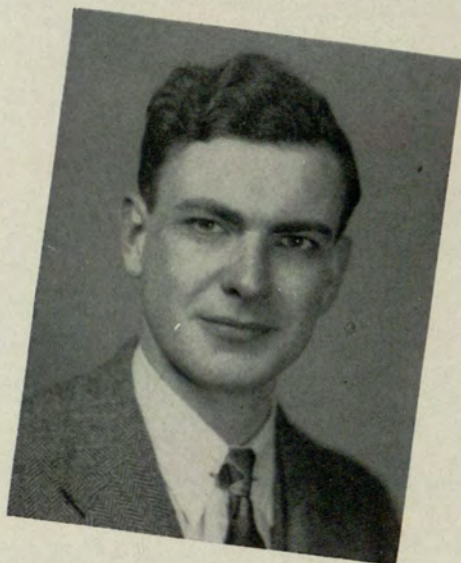


HOMER T. BREWER



WALTER BUCHANAN

HOMER THOMPSON BREWER, B. C. S., Southern Railway System, President Senior Class 1941, Student Council 1940-41, Secretary 1941; Delta Sigma Pi 1938-41, Scribe 1939, Senior Warden 1941; Venetian Society 1938-41, Treasurer 1939; Speakers Club 1938-41, Intramural Key 1939-41, President 1940; Owls Club 1940-41... WALTER ANDREWS BUCHANAN, B. C. S., Chevrolet Motor Company, Delta Sigma Pi 1935-41; Speakers Club 1938-41, Secretary 1939-40; Vice President 1940-41; Student Council... HANS H. BUTZON, B. C. S., General Electric Contracts Corp., Venetian Society, Delta Mu Delta 1940-41, Intramural Key 1940-41... RUBY CHAPMAN, B. C. S., Crimson Key, 1939-41, Phi Chi Theta 1939-41.



HANS H. BUTZON



RUBY CHAPMAN

Seniors



OTIS CHILDS



BERNARD COHEN

OTIS LEE CHILDS, JR., B. C. S., Dodson Printers Supply Company, Delta Kappa 1936-41, Treasurer 1938-39, Lieutenant Governor 1939-40, Governor 1940-41; Alpha Kappa Psi 1937-41; Venetian Society 1938-41; Student Council 1939-40; Inter-Fraternity Council 1940-41. . . . BERNARD W. COHEN, B. C. S., Central Hide Company. . . . CHARLES T. DARNELL, JR., B. C. S., D. B. Thornton Company, Alpha Kappa Psi 1939-41, Historian 1940, Chairman Publicity 1939-40, Director Publicity 1940-41; Intramural Key 1939-41; NOCTURNE Staff 1940-41, Business Manager 1941; Vice President Senior Class 1940-41; Student Council 1940-41. . . . HOMER T. GIBBY, B. C. S., U. S. Post Office.



CHARLES DARNELL



HOMER GIBBY

Seniors



FRANCES GORMAN

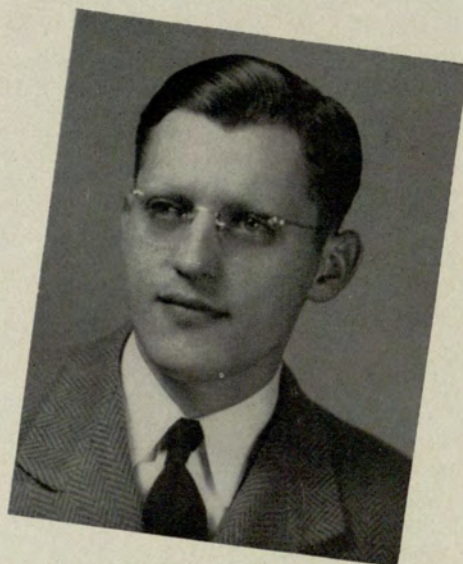


MARY GORMAN

FRANCES NAOMI GORMAN, B. C. S. . . . MARY E. GORMAN, B. C. S. . . .
FRANCIS GREGORY, B. C. S., Atlantic Steel Company, Delta Sigma Pi
1936-41, Venetian Society 1937-41 . . . JAMES WENDELL HARDWICK, B.
C. S., General Electric Company.



FRANCIS GREGORY



JAMES W. HARDWICK

Seniors



VIRGINIA HEMRICK



FRED HILL

VIRGINIA HEMRICK, B. C. S., Sears Roebuck and Company, Delta Lambda Sigma 1939-41, Assistant Treasurer 1940-41; Spur Club 1940-41... FRED S. HILL, JR., B. C. S., Trust Company of Georgia... WILLATHEA JACKSON, B. C. S., Phi Chi Theta, Delta Mu Delta, W. S. Kell Award 1941... WILLIAM T. JORDAN, JR., B. C. S., City of Atlanta, Alpha Kappa Psi 1937-41, Chaplain 1937-38, Secretary 1940, President 1940-41, Trustee Alpha Kappa Psi Building Corporation 1941; Student Council 1939-41; Inter-Fraternity Council 1940-41; NOCTURNE Staff 1940-41; Newman Club 1941; Associate Editor AKPsi PILOT 1940-41.



WILLATHEA JACKSON



WILLIAM T. JORDAN

Seniors

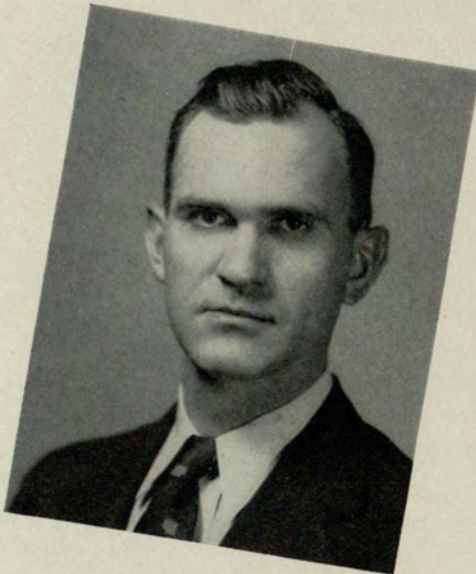


HARRY KENT



FIDELES KLOECKLER

HARRY W. KENT, B. C. S., War Department, Quartermaster Depot, Venetian Society 1940-41... MARY FIDELES KLOECKLER, B. C. S., The Coca-Cola Company, Phi Chi Theta 1937-41, Treasurer 1938-39, Vice President 1939-40, President 1940-41; Crimson Key 1938-41; Inter-Fraternity Council 1940-41... CHARLES H. LESLIE, B. C. S., Federal Prison Industries, Inc., Delta Sigma Pi 1939-41... CARRIE MAUDE LLEWELLYN, B. C. S., Atlanta Public School System.



CHARLES LESLIE



CARRIE MAUDE LLEWELLYN

Seniors



MRS. ALFRED McCLURE



MRS. BERNICE MATTHEWS

MRS. ALFRED McCLURE, B. C. S. . . . MRS. BERNICE E. MATTHEWS, B. C. S.,
Atlanta Public School System. . . FLORENCE EDITH MILLER, B. C. S.,
Femartia Club, President 1940-41. . . CECIL C. PERRY, B. C. S., L. M.
Deans Company.



FLORENCE EDITH MILLER



CECIL PERRY

Seniors



RED PRUITT



DOUGLAS PURDIE

E. REX PRUITT, B. C. S., Federal Reserve Bank . . . DOUGLAS H. PURDIE, B. C. S. . . ELIZABETH RAMSDEN, B. C. S., Southern Freight Association, Phi Chi Theta, 1939-41, Recording Secretary Grand Council, Kappa Theta, 1937-41, President 1938-39, Crimson Key 1939-41, President 1939-40, Spur Club 1936-41, President 1940-41, Student Council, Inter-Fraternity Council 1938-40, Playcrafters, Treasurer Senior Class, Winner Phi Chi Theta Scholarship Key 1940, Winner Kappa Theta Undergraduate Leadership Trophy 1940 . . . SARAH FRANCES RAMSEY, B. C. S., Creomulsion Company.



ELIZABETH RAMSDEN



SARAH FRANCES RAMSEY

Seniors



CHARLES RATTEREE



JOSEPH RHYNE

CHARLES LAWRENCE RATTEREE, B. C. S., Georgia Power Company, Playcrafters 1936-41, Vice-President 1938-39, President 1939-40 . . . JOSEPH SPRATT RHYNE, B. C. S., Bigelow-Sanford Carpet Company, Delta Sigma Pi, 1937-41, Scribe 1941; Student Council 1938-41, President of Student Council and Student Body 1941, Speakers Club 1938-41, Business Manager Signal 1938 . . . IDA LEE STEARMAN, B. C. S., Chevrolet Motors Division . . . HAROLD TABOR, B. C. S., Federal Reserve Bank, Alpha Kappa Psi, Venetian Society, Historian 1940; Feature Editor Nocturne 1940-41, Alpha Kappa Psi PI-LOT staff 1940-41.



IDA LEE STEARMAN



HAROLD TABOR

Seniors



KAY TABOR

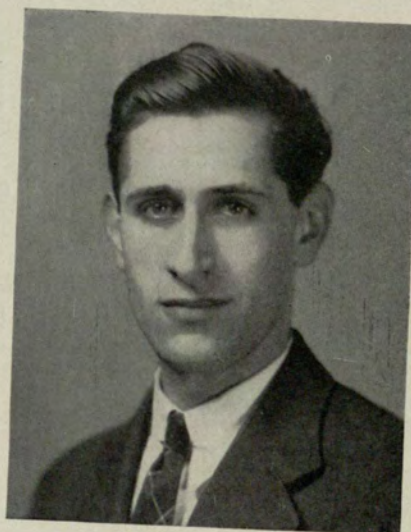


CALVIN WATERS

KAY TABOR, B. C. S., Walker Electrical Co., Delta Lambda Sigma 1938-41, Secretary 1939, President 1939-40; Hilarian Club 1938-41, Treasurer 1938-39; Crimson Key 1939-41, Inter-Fraternity Council 1939-40, Student Council 1940, Secretary Senior Class, Delta Mu Delta 1941 . . . CALVIN WATERS, B. C. S., Retail Credit Company . . . LUTHER T. WOOTAN, B. C. S., Norris and Hirshberg . . . JAMES A. ZAMBOUNIS, B. C. S., Home Owners Loan Corporation.



LUTHER T. WOOTAN



JAMES ZAMBOUNIS

Senior Class Roll

JACK M. ADAMS
WILLIAM HEATH ALLEN
MRS. ELIZABETH JETTON ARNOLD
EMMA SUE BAIRD
KATE RUTH BEAN
PAULINE BERRY
HELEN ESTHER BLEVINS
P. STANLEY BOWDEN
HOMER T. BREWER
WALTER ANDREWS BUCHANAN
EDWARD H. BURKHALTER
HANS H. BUTSON
MARTHA EUGENIA CALLAWAY
RUBY CHAPMAN
OTIS L. CHILDS, JR.
MIRIAM JOSEPHINE CLARKE
BERNARD W. COHEN
HUBERT W. CORBITT
LOUIS W. CORRIGAN
CHAS. E. COTTON
DURANT COUCH
CHARLES TATE DARNELL, JR.
JULIET DOWLING
JAMES H. DAVIS
WILLIAM WAY EDWARDS, JR.
PHIL LAZEAR EPSTEIN
JOSEPH ALEXANDER FLEWELLYN, JR.
SUSAN GARDNER
HOMER T. GIBBY
FRANCES NAOMI GORMAN
MARY E. GORMAN
FRANCIS S. GREGORY
ELLA HANSEN
JAMES WENDELL HARDWICK
JULIAN M. HEETH, JR.
VIRGINIA HEMRICK
FRED S. HILL, JR.
BONNIE HUGHEY
BILL T. JORDAN, JR.
HARRY W. KENT
MARY FIDELES KLOECKLER

CHARLES H. LESLIE
CARRIE MAUDE LLEWELLYN
MARY LOGUE
EDGAR ALLEN McCOA
MRS. ALFRED McCLURE
MRS. BERNICE E. MATHEWS
FLORENCE EDITH MILLAR
ROY B. MILLER
ROBERT EARLE MOODY, JR.
MRS. W. F. NASH
JULIAN OSBORN NICHOLSON
CECIL CLAUDE PERRY
MARY LOUISE PITTMAN
VIRGINIA W. POTTS
E. REX PRUITT
DOUGLAS H. PURDIE
ELIZABETH RAMSDEN
SARAH FRANCES RAMSEY
CHARLES LAWRENCE RATTEREE
JOSEPH REDWINE, JR.
JOSEPH SPRATT RHYNE
GAY SHELNUTT
MRS. A. P. SMITH
ELLA GRETCHEN SMITH
HENRY CARSON SMITH, JR.
IDA LEE STEARMAN
BRUNO F. STEIN
MRS. BLANCHE W. STRICKLAND
DON J. STROOP
RUTH SUMMERLIN
HAROLD L. TABOR
KAY TABOR
MRS. KATE W. TAYLOR
GEORGE J. VANDIVER
GEORGE C. WATERS
DOROTHY M. WHELCHER
JAMES T. WILEY
LUTHER T. WOOTAN
E. ELWOOD WRIGHT, JR.
JACK K. WRIGHT
JAMES A. ZAMBOUNIS



Junior Class



Candid shot of officers directing class meeting. Confidentially, they were discussing plans for raising funds to meet NOCTURNE assessment.



SANDERS



LUCK

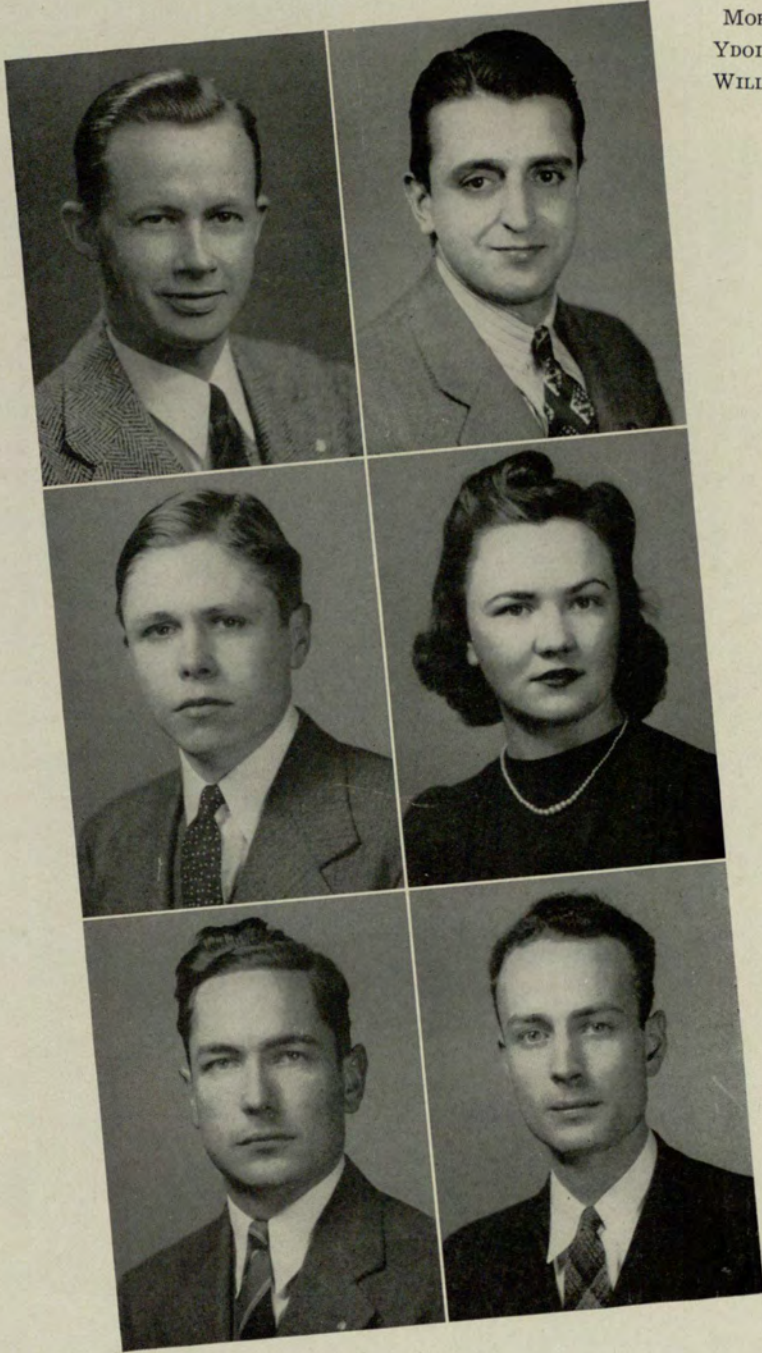


BOLEN

OFFICERS

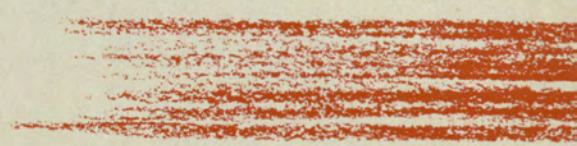
- | | | |
|---------------|-------|----------------|
| BRITT SANDERS | | President |
| TOM LUCK | | Vice-President |
| DORIS BROWN | | Secretary |
| ERNEST BOLEN | | Treasurer |

Juniors

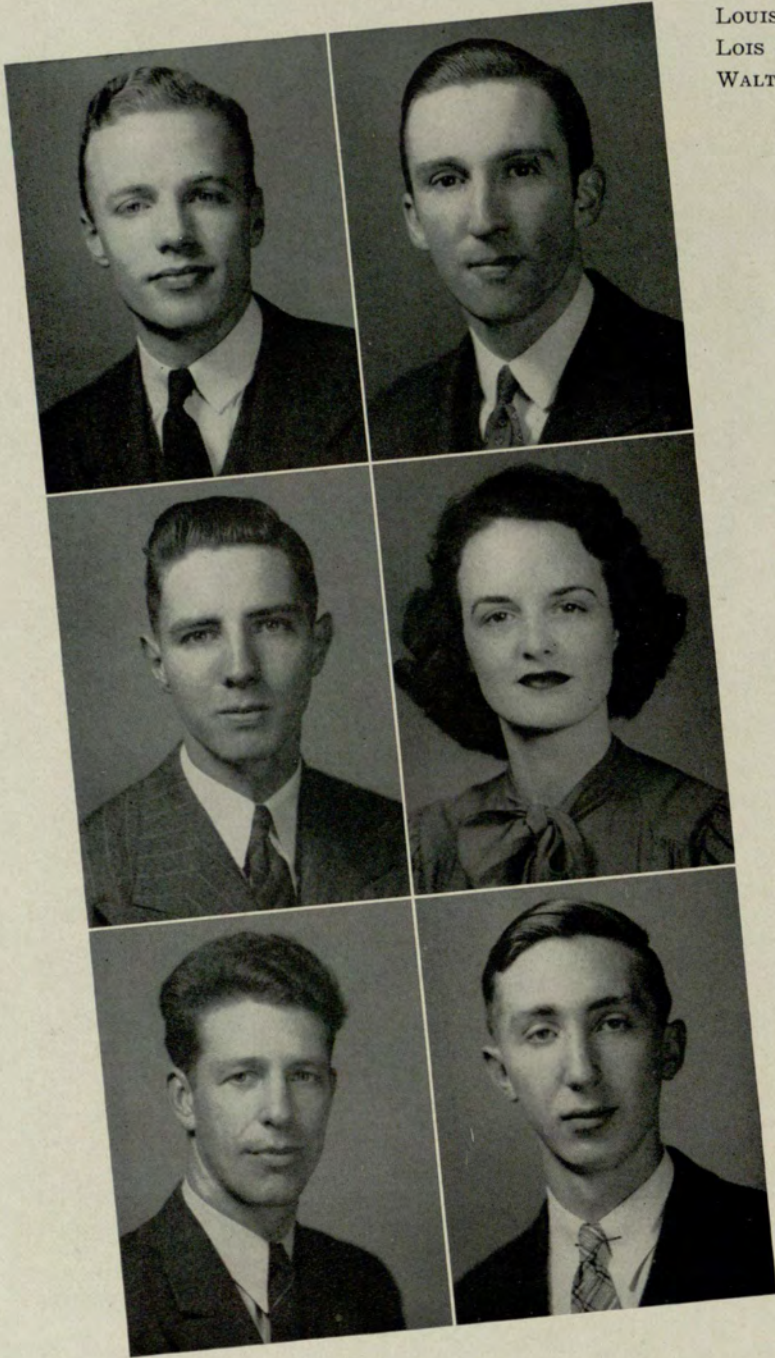


MORRIS AMATO
YDOINE BINFORD
WILLIAM LEWIS BOST

HOWARD ALLISON
JACK T. BALL
ROBERT ERNEST BOLEN



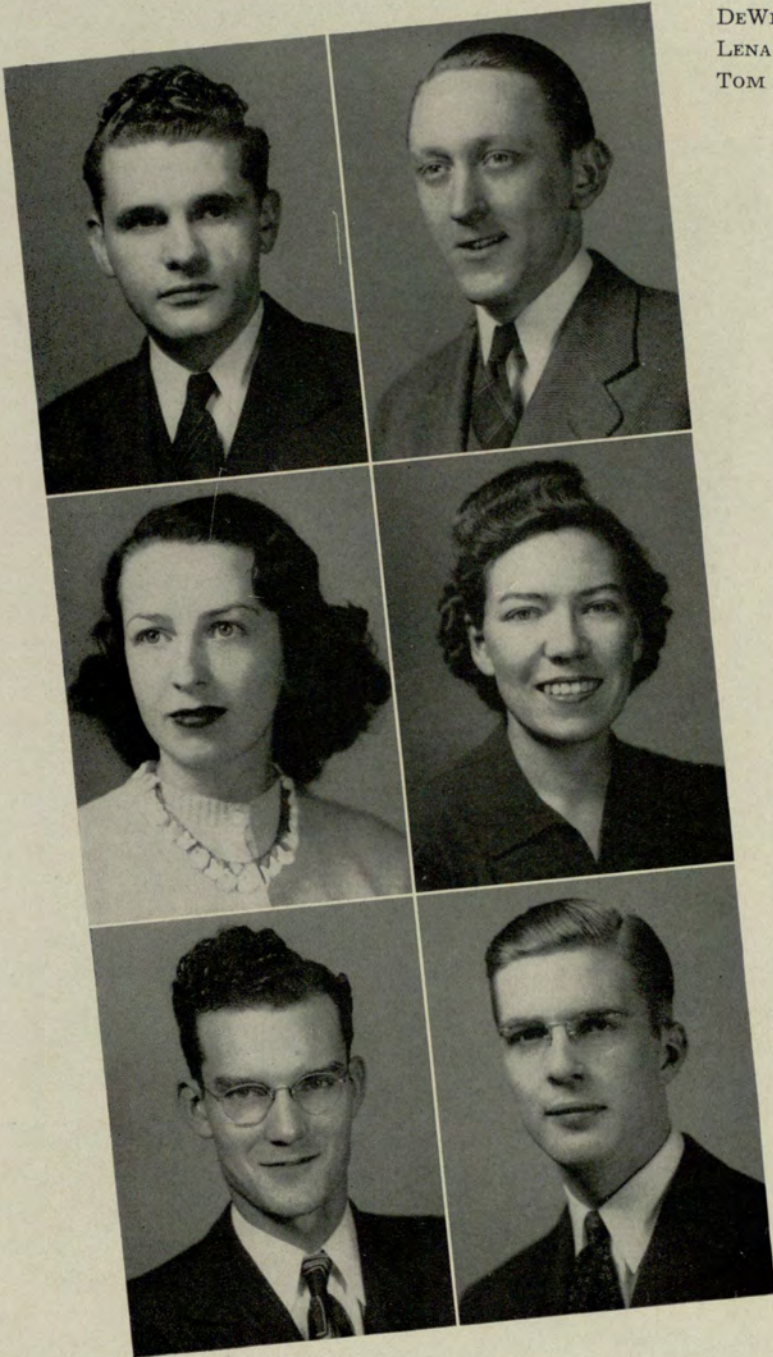
Juniors



LOUIS W. CORRIGAN
LOIS DOZIER
WALTER ASBURY FREEMAN, JR.

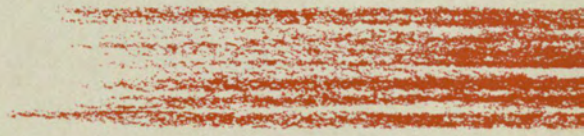
EDWIN M. CLARK
FRED HENRY DENDY, JR.
HAROLD OWEN DUNCAN

Juniors



DEWITT CLINTON HUNT, JR.
LENA RUTH LAWRENCE
TOM LUCK

J. NEIL HOPKINS
JEANE JOHNSON
J. RAYMOND LONG, JR.



Juniors



MRS. CLAIRE MANNERS
GENIEVER MURRIELLE
EMILY ROBERTS

OWEN H. MALCOLM
LOUISE F. MARCHMAN
GLENN FORD RIVES

Juniors



GEORGIA LOUISE SOWELL

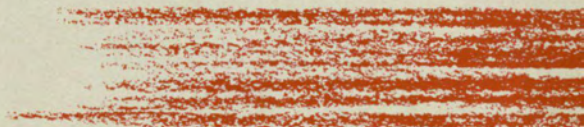
JULIETTE TODD

ERLENE WHEELER

JAMES BRITTON SANDERS

WILLIAM E. STRAYER

JAMES P. WELCH



Juniors



ALDO GARONI
FRANK INMAN
RAY REILLY

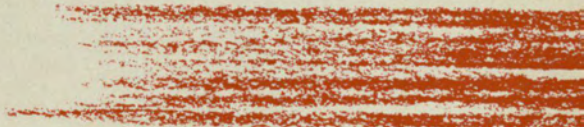
FRED BRANAN
FRANCES GIBBS
H. W. DERRETT

Juniors

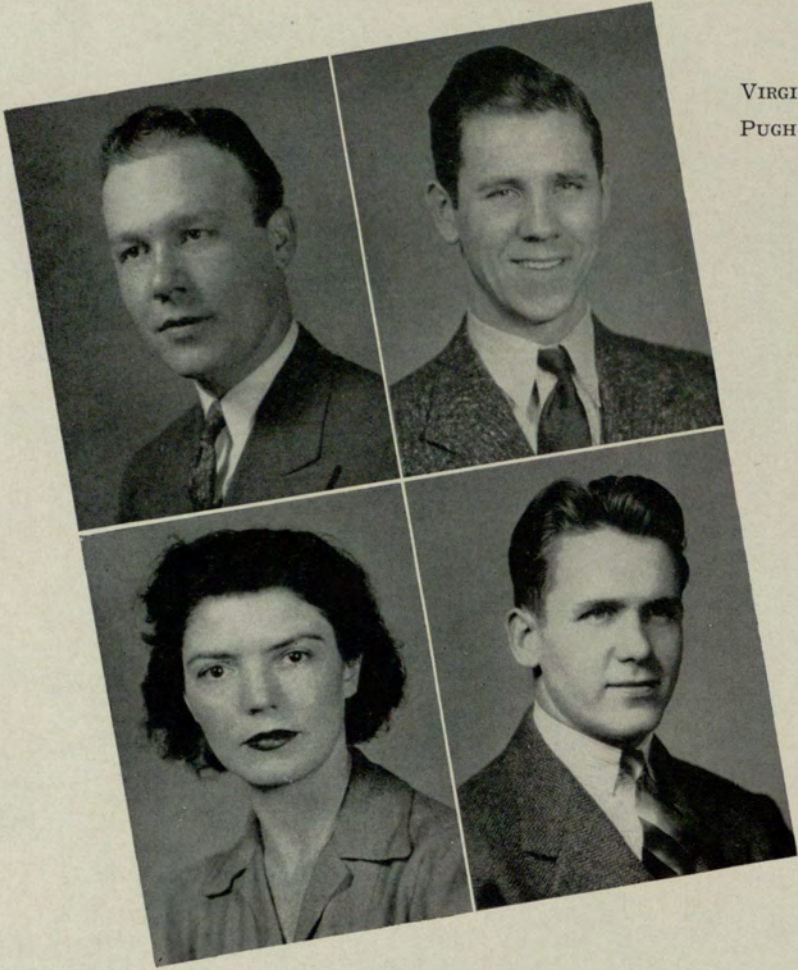


N. A. O'SHEA
DOROTHY STRANGE
ROBERT W. WINFREE

LOUISE ROGERS
NINETTE PAYNE
FRED WINDHAM



Juniors



VIRGIL ZINK
PUGH SMITH

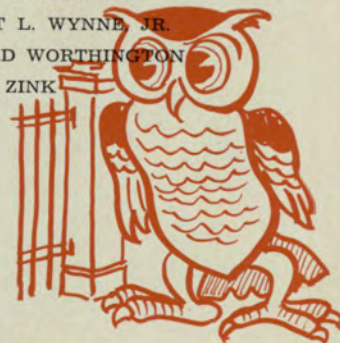
W. C. WOMBLE
LUCIE RUTH HOGUE

Junior Class Roll

REINALDO ABREW
A. ELIZABETH ALLEN
MORRIS AMATO
JACK T. BALL
EMMETT BARLOW
JOE NATHAN BASS
BUFORD DEAN BATTLE
CAROLYN VIRGINIA BELL
JESS GORDON BENEFIELD, JR.
YDOINE BINFORD
ARTHUR WARNER BISHOP
ROBT. ERNEST BOLEN
MRS. JEAN BRIGGS BORDEN
WM. LEWIS BOST
LOHRIENE LAVIN BOWMAN
WM. BROMBERG
DORIS MASON BROWN
FRANCES A. BROWN
HAROLD BROWN
JAMES T. BYRD
WILLIAM P. CAMPBELL
J. HAMILTON CARSWELL
MILDRED CHRISTIAN
EDWIN M. CLARK
I. PERRY COCKE
ANGELINE I. COLEMAN
MRS. EDNA PAYNE COOPER
EMMA GEORGE CORNWALL
HORACE VICTOR DAVIS
FRED HENRY DENDY, JR.
DOLORES DOSTER
E. LOIS DOZIER
ROGER DOZIER
HAROLD OWEN DUNCAN
HORACE WILSON DURRETT
ROYAL NEIL ELROD
THEODORE D. FENSTER
WALTER ASBURY FREEMAN, JR.
MARY FRIEDMAN
FRANCES ROSA GIBBS
MARY EUGENIA GIVENS
FRANK J. GRANT
HAROLD B. GUNBY

VERNELLE HAGAN
WILLIAM ROGER HAMMOND
CHARLOTTE CLAIRE HARDIN
F. VIOLA HARRIS
PHYLIS HARRIS
ELIZABETH ESTELLE HAYES
PATRICIA FRANCES HEAD
ANNIE BELLE HENRY
MRS. BIRDIE HENRY
VIRGINIA REBECCA HIATT
LUCIE RUTH HOAGE
J. NEIL HOPKINS
C. GORDON HUEY
DeWITT CLINTON HUNT, JR.
FRANK S. INMAN
JOE V. JACKSON
WM. COSGROVE JACOBS
WILL FRANK JOHNS
JEANE JOHNSON
CHARLIE A. JOHNSTON
CHARLES V. JONES
CURTIS R. KIRKLAND
MRS. FRANCES LAVROFF
LENA RUTH LAWRENCE
J. RAYMOND LONG, JR.
TOM LUCK
WARREN D. McCLAM
OWEN H. MALCOLM
MRS. CLAIRE MANNERS
LOUISE F. MARCHMAN
HOMER S. MERRILL
MRS. JOHN D. MITCHELL
THOMAS HIGH MOBLEY
MIRIAM CHARLOTTE MOOR
MRS. DOTTIE FREEMAN MOORE
JAMES COLEY MOORE
HELEN MORGAN
GENIEVER MURRIELLE
NICHOLAS ALOYSISU O'SHEA
NINETTE GILMER PAYNE
HELEN H. PITMAN
HAZEL PURDIE
VA. W. POTTS

ILMA RANTA
RAYMOND LEON REILLY
W. S. RESPESS
VITTORIA RIGHINI
GLEN FORD RIVES
EMILY ROBERTS
BETH ROGERS
MARY LOUISE ROGERS
ODESSA STROZIER ROUTH
H. GARTRELL SANDERS
JAMES BRITTON SANDERS
CARL SANDIFORD
RALPH SAYE
MABEL SCRUGGS
RICHARD CHARLES SEIGNIOUS
MARIE LOUISE SHERAM
BERNICE EZEKIEL SMITH
GEORGIA LOUISE SOWELL
FORREST C. SPURGEON
ANNE M. STICHA
GILBERT M. STOCKTON
WILLIAM E. STRAYER
DEWEY S. TEAGUE
WILLIAM C. THIBADEAU
DORIS THOMPSON
J. CARL THOMPSON
JULIETTE TODD
LESLIE P. TURNER
EMMALINE TWEDELL
MURDOCH WALKER
VICTOR H. WATTS
JAMES P. WELCH
ERLENE WHEELER
DONALD B. WILEY
MRS. L. A. WILLS
FRED WINDHAM
ROBERT W. WINFREE
W. C. WOMBLE
MACON O. WORTHEN
ROBERT L. WYNNE, JR.
DILLARD WORTHINGTON
VIRGIL ZINK



Pre-Junior Class



Stopped between classes: Hopkins, Jones, Brewer and Garoni. Brewer, wife of senior class leader, holds Garoni's hand, or vice-versa.



GARONI



JONES



BREWER



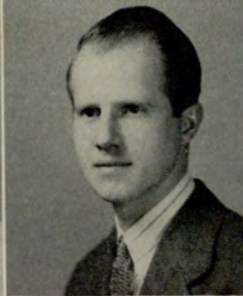
HOPKINS

OFFICERS

- | | | |
|---------------|-------|-----------------------|
| ALDO GARONI | | <i>President</i> |
| AL JONES | | <i>Vice-President</i> |
| LENORE BREWER | | <i>Secretary</i> |
| NEIL HOPKINS | | <i>Treasurer</i> |



MELROSE BLACK
BOB BOWEN
MRS. LENORE BREWER



JOHN A. CASON
LOUISE CAWTHON
CURTIS COOPER

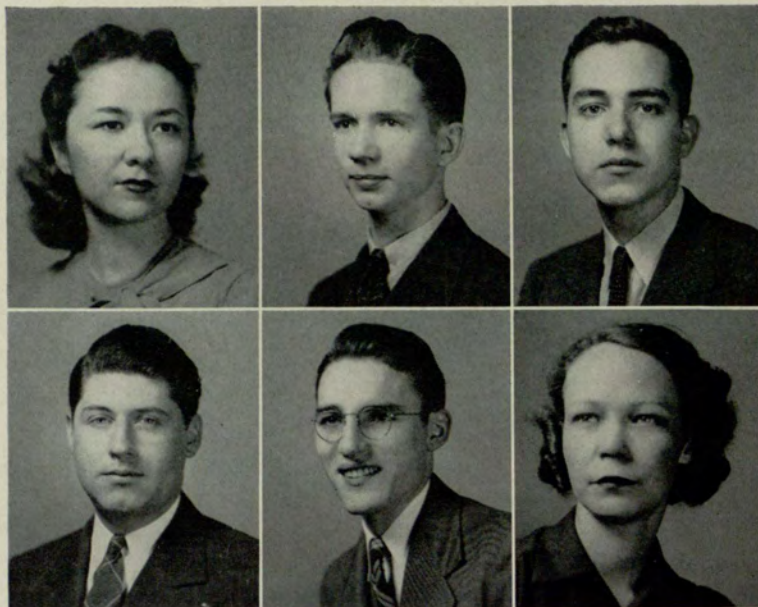
Pre-Juniors

WILLIAM MEINERT DELOAN



CHARLES MICHAEL DOBBINS





GENEVIEVE DUKE
GEORGE R. EDWARDS
STEVE PACE EHRHARDT

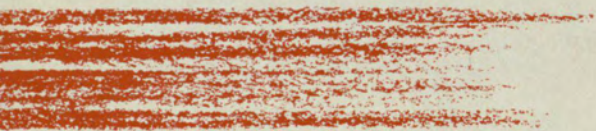
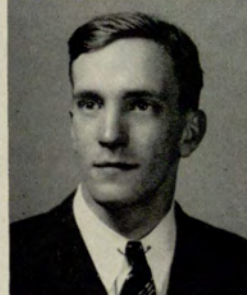
ALDO GARONI
WILLIAM R. GUERIN
CLAIRE ELIZABETH HAMMOND

Pre-Juniors

M. FRANCES HENDRICKS



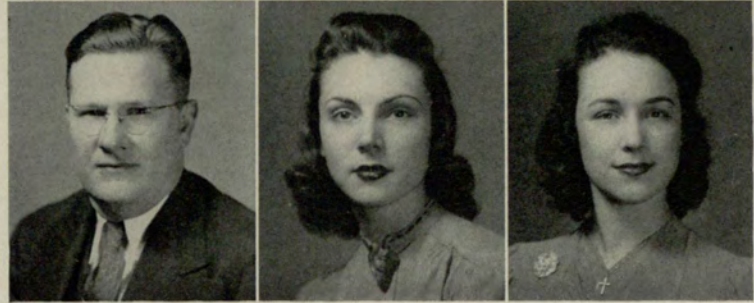
HUGH HOWELL, JR.



CLAIRE LOUISE JOHNSON
ALBERT LEE JONES
INEZ KITCHENS



HENRY HARRALSON LYCETT
EVELYN MATHIS
MARY LOUISE MAYES



Pre-Juniors



J. GRAHAM MOBLEY



VERA MAE MURRAY



EVELYN PEAVY
WILLIAM EDWIN PUCKETT
O. C. ROBBINS



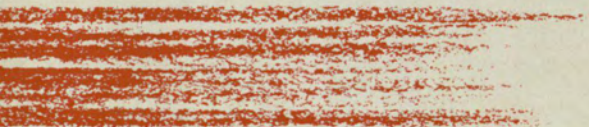
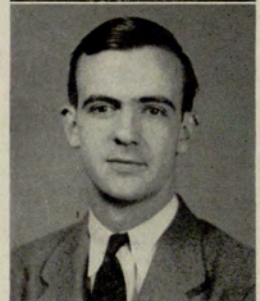
MARY ALICE SHELTON
ROBERT K. SIMS
LEO STILLMAN

Pre-Juniors

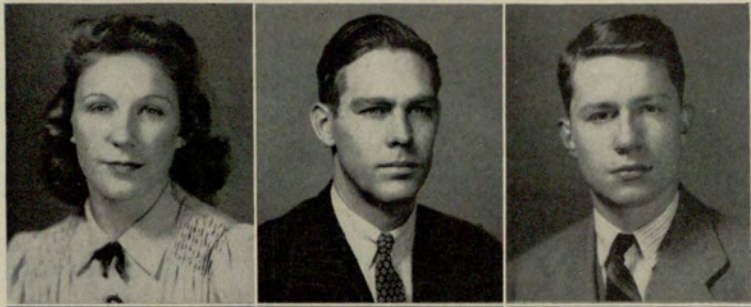
S. D. TANNER



WILLIAM J. THOMAS



MAE CASH
DON R. FLOYD
RICHARD O'CALLAGHAN



BILL SUTTLES
DORIS THOMPSON
ROY C. WICKER



Pre-Juniors



W. C. WINFREE



EDWARD W. WITHORN

Pre-Junior Class Roll

THOMAS JOSEPH ABRAHAM
JAMES SAMUEL ADAMS
WILLIAM CHAY ALFORD
FLORENCE ANDERSON
JAMES LEE BAGGOTT, JR.
BEN TAUNER BAKER
KATHLEEN BAKER
MARSHALL MARION BANKS
RALPH HAMILTON BELL
JAMES NEVILLE BLACK
MELROSE BLACK
BOB BOWEN
FRED H. BRANNON
MRS. LENORE BREWER
JACK TODD BROWN
TOWEY BRYANT
LUTHER PIERCE BURROUGHS
MARVIN O. BYRD
FRANK L. CARTER
MARY FRANCES CASH
MAY FRANCES CASH
JOHN A. CASON
LOUISE CAWTHON
SAMUEL CHEVES
DOROTHY CARLTON COOK
CAROLINE H. CROCKETT
WM. MEINERT DELOACH
CHARLES MICHAEL DOBBINS
PAT MOORE DOBBINS
JEANNETTE DOZKER
GENEVIEVE DUKE
LILLIAN MARTHA DURLING
GEORGE R. EDWARDS
STEVE PACE EHRHARDT
DAVID ROLAND ENLOW
LAWRENCE S. EVANS
SARA NELL FAGAN
SIDNEY HERBERT FELDMAN
JOHN R. FLOYD
SARA ELIZ. FOUNTAIN
ARTHUR GORDY FRENCH
BOB A. GARDNER
ALDO GARONI
ROBERT CALVIN GARVIN
MARY NORTON GRESHAM
WM. R. GUERIN
VERNELLE HAGAN
CLAIRE ELIZ. HAMMOND
MANLEY HAMRIC
ELIZ. DODD HARRIS
RUBY MAE HARPER
LILA MAE HARRISON
PHYLLIS HARRIS
M. FRANCES HENDRICKS
W. ARTHUR HASTY
GEORGIA HINTON HERBERT
HUGH HOWELL, JR.
EDITH HUFF
ROSE GARNETT HUNTER
SPENCER JACOBS
CLAIRE LOUISE JOHNSON
W. JEANNETTE JOHNSON
ALBERT LEE JONES

RUSS HARRIS JONES
EVELYN WILSON JUDGE
ALFRED RUSSELL KINNEY, JR.
INEZ KITCHENS
BESSIE MAE KNIGHT
IDA LANDAU
JACK ELLIS LEVY
HENRY HARRALSON LYCETT
JAMES HERSCHEL McALLISTER
FREDERICK R. McCOLL
SAMSON LAMAR MALLORY
JACK MALVERSON MARTIN
JAMES G. MASON
EVELYN MATHIS
ELLEN MATHEWS
MARY LOUISE MAYES
FRED LEE MEYER
J. GRAHAM MOBLEY
VA. LITTLE MURDOCK
VERA MAE MURRAY
GENEVIEVE MURRELLE
RICHARD HAYES O'CALLAHAN
WORTH O'DELL
JULIUS OELSNER
ADA ROSE O'QUINN
SARAH L. PARTEE
EVELYN PEAVY
WM. EDWIN PUCKETT
FLORENCE ELIZ. PURSELL
W. S. RESPESS
O. C. ROBBINS
ARTHUR LOUIS ROGERS, JR.
HENRY BASCOM SHANNON
DUMAS B. SHELLNUTT
MARY ALICE SHELTON
VIRGIL E. SIMPSON
ROBERT E. SIMS
ROBERT K. SIMS
BARTOW WYNN SMITH, JR.
EARLE PUGH SMITH
KATHERINE SMITH
WALDO B. STARR
LEO STILLMAN
GRACE ALLENE SUDER
RUFUS L. SUGGS
BETTY INGRAM SUTHERLAND
WM. M. SUTTLES
S. D. TANNER
WM. J. THOMAS
GEORGE E. TOMBERLIN
ALBERT ROY TRIPPE, JR.
JOHN W. WAGNON
KERMIT WARREN
EVELYN H. WATKINS
LUREESE ANN WATSON
JOHN E. WEST
JEROME WHATLEY
HILDA E. WHEELER
C. L. WHITE
ROY C. WICKER
SARA E. WILLIAMS
WALTER C. WINFREE
EDWARD W. WITHORN
HELEN ISHAM WYNNE
MARGARET B. YOUNG



Current Events: Sophomore officers pause at gates to read Evening News and talk of foreign situation. Only class to pick all-masculine leaders, it was last to furnish useable picture of officers. The camera, with a conscience, refused to lie.

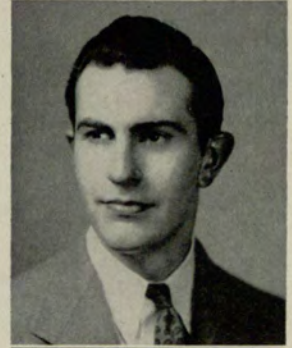
Sophomore Class



OFFICERS

- WALLACE E. NORRIS *President*
- JIMMIE McNABB *Vice-President*
- GEORGE BECKHAM *Secretary*
- SAM FRANKLIN *Treasurer*

NORRIS



McNABB

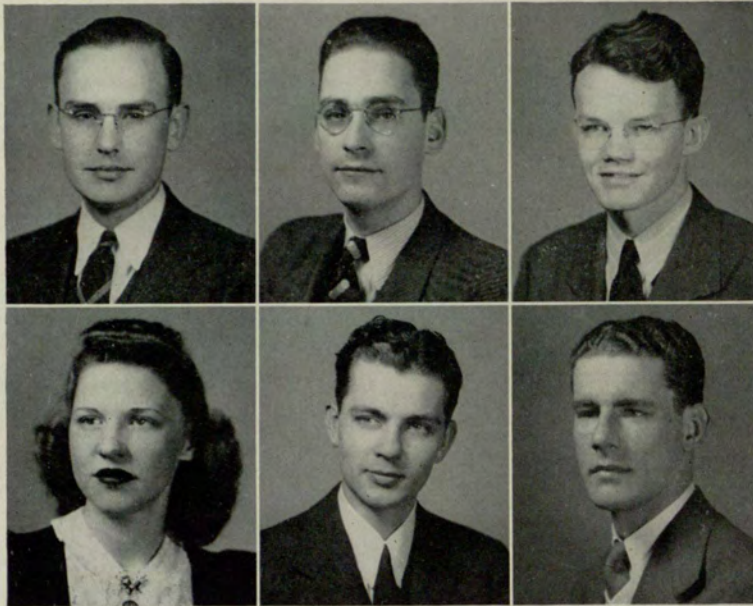


FRANKLIN



BECKHAM



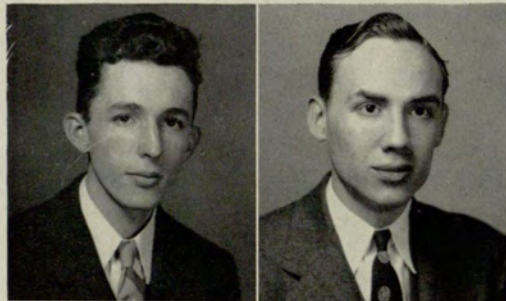


IRA R. ABERNATHY
 HOWARD LEE BAER
 ARCHER M. BAIRD

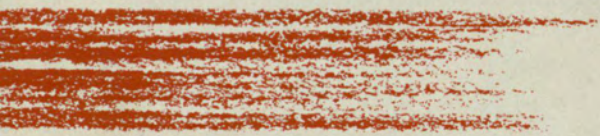
BETTY ANNE BEAVERS
 GEORGE BECKHAM
 D. RICHARD BENNETT

Sophomore Class

LAWRENCE BENTON
 WILLIAM HAROLD BRYAN



LESLIE C. BUCHANAN
 HARRY ALAN CANTRELL





FRANK WINFIELD CLOUDT
JIMMIE M. EDWARDS



JOSEPHINE ELARBEE
RUTH EARLES ELLIOTT

Sophomore Class

DOROTHY ESCOTT
HARRY TALBOT FENN
VADIE KATHRYN FLEMING



SAMUEL OWEN FRANKLIN
JAMES GASTON
BOBBIE GRIER



FRANCES GRIER
ROBERT LYLE HAMES
HIRAM JAMES HONEA



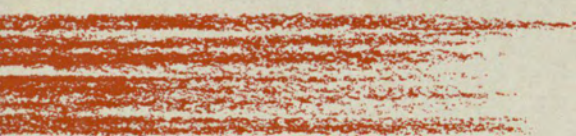
JEAN B. HOWELL
RUTH ISAKSON
CLYDE HOWARD JACKSON

Sophomore Class

JACK W. JUSTUS
MAE AGNES KESTLER



AL KUETTNER
JOHN BAYLIS McCOLLUM, JR.





SARA ANNETTE MCDANIEL

JAMES HARRIS MCNABB

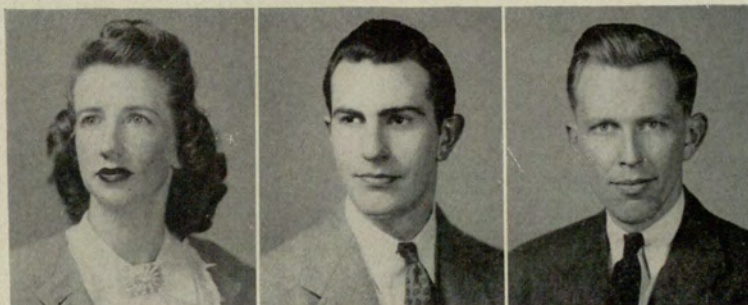


LYLE MILLIGAN

NIXIE NORRIS

Sophomore Class

THEONE NORRIS
WALLACE EWING NORRIS
RAYMOND O'KELLEY



BILL K. PARNELL
RUTH PITTARD
CECIL A. POOL





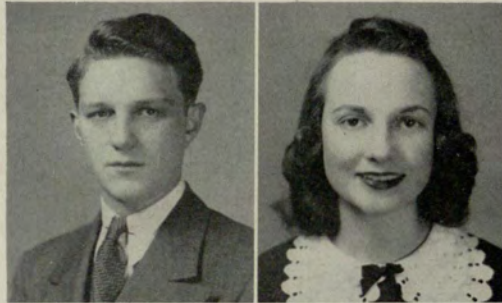
BILLY PUCKETT
 CAROLYN REID
 BONNIE GORDON ROWE



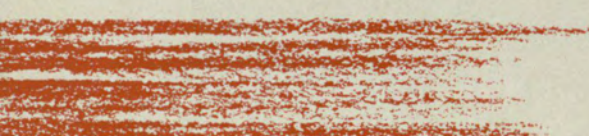
S. H. SHOCKLEY
 CARL N. SIMPKINS
 DOROTHY JEYNELLE STRANGE

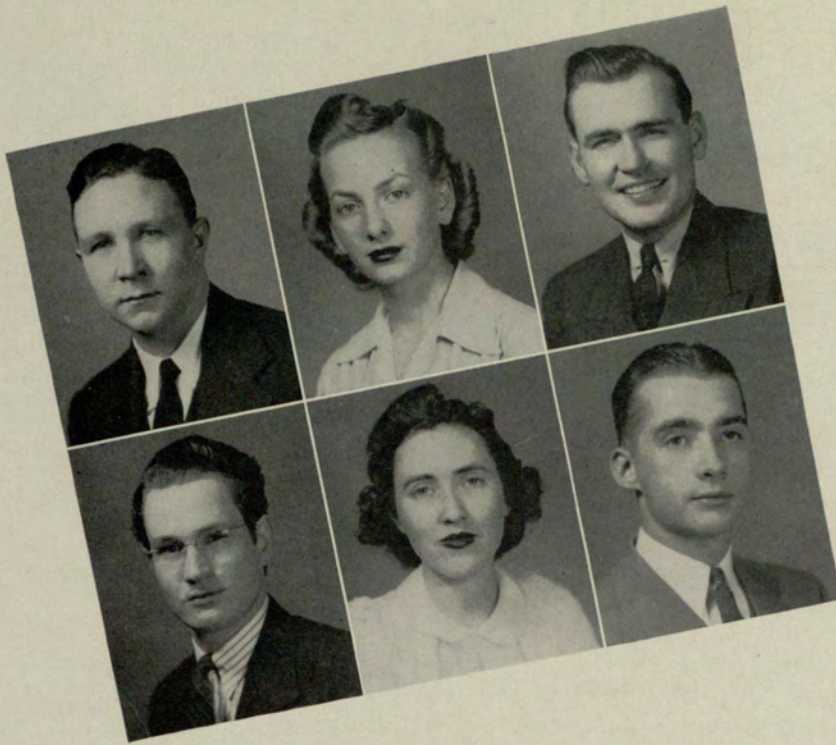
Sophomore Class

RAYMOND W. TILLER
 CAROLYN H. TODD



N. MCCOY WHITE
 HERRIET WILLIAMS





LEE BURGE
MARJORIE DEAN
HARVEY LIVINGSTONE

HAROLD MITCHELL
CAROLYN REID
CECIL WILLIAMS

Sophomore Class

BOB WILLIAMS



FRED O'KELLEY



VIRGINIA WISE



Sophomore Class Roll

MABLE CAMP ABERCROMBIE
IRA R. ABERNATHY
A. HARVEY ADAMS
DRUSILLA RHODES ADAMS
JAKE ALHADEFF
HELEN A. ALLEN
JAMES HOWARD ALLISON, JR.
GLENN MALCOLM ALSPAUGH, JR.
JOHN J. ASKEW
HOWARD LEE BAER
I. J. BAILEY
ARCHER M. BAIRD
BETTY ANNE BEAVERS
GEORGE S. BECKHAM
EMORY BOONE BELL
MERLE MARION BELLAMY
D. RICHARD BENNETT
BOB BICKFORD
JOHN HENRY BLAIR
CHARLES C. BOWLING, JR.
ROBERT ORRIN BRANDES
JAMES HARRY BRICE
MARY CATHERINE BROOKS
THOMAS WATSON BROOKS
SHERWOOD MERCER BROOME
FRANK A. BROWN
ISAAC CECIL BROWN
WM. HAROLD BRYAN
LESLIE C. BUCHANAN
DAVID ROY BUICE
WM. LEE BURGE
ODELL BURNETT
JOE H. BYRNES
HARRY ALAN CANTRELL
MARTHA GUARD CASON
EDNA H. CAWTHORN
ANNE E. CHANDLER
CLYDE W. CHANDLER
JAMES EMORY CHAPMAN
SAM D. CHERRY
MRS. SAM D. CHERRY
ALBERT LEE CLARKE
FRANK WINFIELD CLOUDT
FRANK PATTON COOKE
CURTIS NORMAN COOPER
NORMAN J. COWART
JOHN H. COX
H. ELIZABETH CRAIG
ROBT. M. DALE
ROBERT THOMAS DALTON
HELEN K. DAVIDSON
FRANK HENRY DeCHRISTINA
HUGH DUNNING
JOHN WILBER EAVES
GEORGE ROBERT EDWARDS
JIMMIE M. EDWARDS
STEVE ELRHARDT
JOSEPHINE ELARBEE
RUTH EARLES ELLIOTT
AUGUSTA ELLIS
BION GLOVER ENLOW
SARA M. ENTREKIN
ELIZABETH EPSTEN
DOROTHY ESCOTT
GUS T. EVANS
HENRY SIDNEY FARRAR
HARRY TALBOT FENN
ROBERT BENNETT FERRELL

VADIE KATHRYN FLEMING
JANIE T. FOWLER
SAMUEL OWEN FRANKLIN
LAWRENCE S. FREDERICK
WILBUR FREDERICK
MRS. MABLE JONES FRENCH
JAMES L. FREEMAN
ROBERT OLIN FRICKS
JAMES GASTON
FRANCES GRIER
ROBERT W. GRIFFITH
ISAAC NACE HABIF
ROBERT LYLE HAMES
FRANK EUGENE HAMILTON, JR.
WM. JACKSON HAMILTON
JOE M. HARRELL, JR.
INA C. HARRELL
LOUIS BENJAMIN HARRIS
CURTIS H. HARRISON
DOROTHY HARRISON
WM. HENRY HARTSFIELD, JR.
RAY V. HARTWELL, JR.
W. ARTHUR HASTY
GEORGE HERBERT
FLEWELLYN HOLT HERTWIG
FRED T. HIGGINS
REBECCA HILL
HIRAM JAMES HONEA
JEAN B. HOWELL
ROSEMARY HUGHES
CHARLES R. IRELAND
RUTH ISAKSON
CLYDE HOWARD JACKSON
JANE RUTH JACKSON
SUE B. JOHNSON
EMORY A. JOHNSTON
JACK W. JUSTUS
MAE AGNES KESTLER
EMORY KINNARD
MARTHA KIRVEN
EVERITT KNUDSON
AL KUETTNER
IRENE F. LAUGHLIN
CHARLES TURNER LEWIS
JIMMIE C. LAXSON
JOHN BAYLIS McCOLLUM
JACK ELLIS LEVY
SARA ANNETTE McDANIEL
HUBERT GRIFFITH McLUCAS
JAMES HARRIS McNABB
MABEL RUTH MARKOWITZ
ELLEN L. MATHEWS
LYLE MILLIGAN
ELBERT HAROLD MITCHELL
HAROLD MONTGOMERY
BEN GRAY MOORE
BILL F. MOORE
FRANK ANTHONY MORRIS, JR.
ANNE RITA MURPHY
E. LANSING MURPHY
VIRGINIA LOUISE MURRAY
ELSIE BLANCHE NELMS
NIXIE NORRIS
THEONE NORRIS
WALLACE EWING NORRIS
JACK ROWLAND NORTON
SIDNEY NOVECK
JULIUS OELSNER

FRED O'KELLEY
RAYMOND O'KELLEY
PAUL OTWELL
BILL K. PARNELL
SILAS OWEN PAYNE
H. KENNETH PECKHAM
JOE PENDERGRAST
CLAY W. PENICK, JR.
JOSEPH PEREZ
SARA ALICE PICKETT
THOMAS E. PIERCE
RUTH PITTARD
CECIL A. POOL
MARY ELIZABETH POOLE
JOE PRENDERGRAST
BILLIE M. PUCKETT
WM. PLENNIE RAMSDEN
BETTY JANE RAMSAUR
BESSIE G. RAVEN
JOEL C. REEVES
CAROLYN HOWARD REID
LOTTIE REID
MRS. EVELYN RICHARDS
FLETCHER G. RODGERS
VIRGIN ODELL ROGERS
BONNIE GORDON ROWE
MARJORIE FAY SANDERS
J. FRED SCARBROUGH, JR.
NATHAN RUSSELL SEWELL
GEORGE D. SHAFE
GEORGE W. SHELL
SIMON BALDWIN SHINGLER
S. H. SHOCKLY
CARL N. SIMPKINS
DWIGHT SMITH
KATHERINE SMITH
CHARLES C. SNOW
WALDO B. STARR
ROY E. STEINHAUER
E. HAROLD STILL
BETSY BELL STOCKBRIDGE
ARTHUR T. STRAIN
DOROTHY JEYNELLE STRANGE
GLENN H. STROTHER
CHESTER HOWARD SUMMERS, JR.
ERIN D. TAYLOR
RAYMOND W. TILLER
CRAIG A. TIPPINS
CAROLYN H. TODD
MORGAN D. VAUGHAN
MARY ANGELA VESELKA
ANNE H. WALKER
VALERIA WATKINS
THOMAS J. WEATHERLY
JULIA B. WEBB
JACOB D. WERBIN
TILLIE V. WEST
THOMAS W. WHEELER
N. McCOY WHITE
M. GRACE WILLARD
MARTHA A. WILKERSON
D. ANNE WILLIAMS
CECIL P. WILLIAMS
HERRIET WILLIAMS
ROBERT W. WILLIAMS
BILL WIMBISH
VIRGINIA WISE
JOHN C. YOUNG



The Dopes: Frosh officers pause at refectory counter for most refreshing drink. Elected in mid-year when original leadership was broken by withdrawals, these first-termers cleaned up year's activities in fine order.

Freshman Class



OFFICERS

- WARREN BLACKMON *President*
- JAN KELLER *Vice-President*
- BOBBIE GRIER *Secretary*
- LATRELLE HOFFMAN *Treasurer*

BLACKMON



KELLER



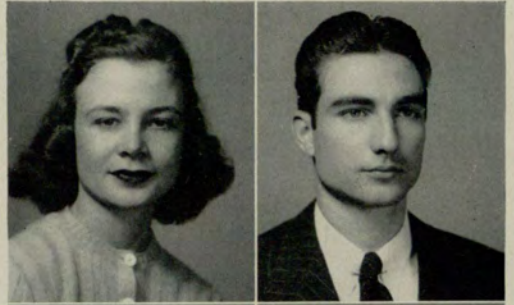
GRIER



HOFFMAN



GRACE ALLISON
ARNOLD ANDERSON



WILSON MASON AUSTIN
WARREN L. BLACKMON



Freshman Class

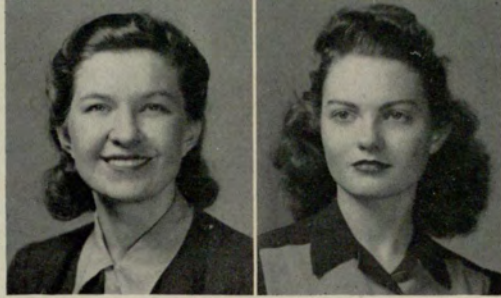
FORREST CAIN
MARY ELIZABETH CALLAWAY
FLORENCE CAMP



FRANCES ETHELYN CANTRELL
ELIZABETH CHEATHAM
VIVIEN CLOUDIS



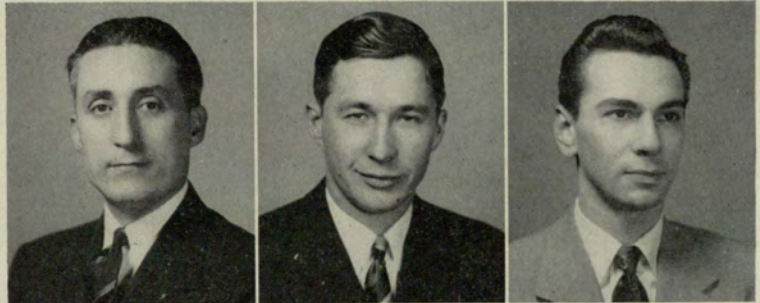
LOUIS H. CONE
GEORGE C. CORRIGAN



ELIZABETH CORY
KATHLEEN COX

Freshman Class

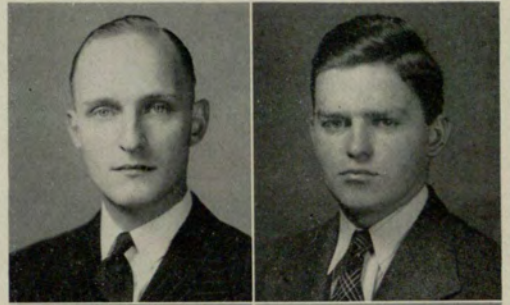
VICTOR L. DAVIS
JOHN PHILLIPS DIERCKS
PEDRO DODYS



ERNEST L. ELSNER
CHARLES MIKE ENGLISH
DAVID LESLIE ENGLISH



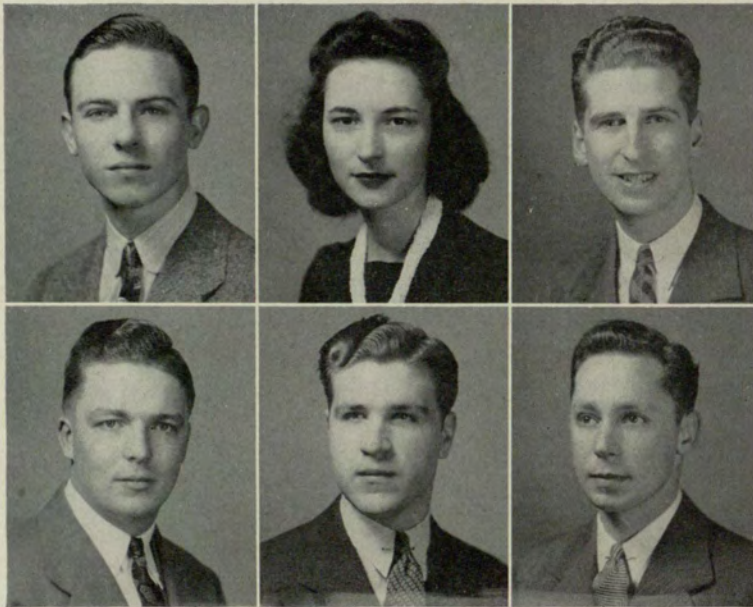
HUGO R. FRANZ, JR.
JOHN R. GILLILAND, JR.



LOUIS GREENE
JUNIUS PRESTON HILL

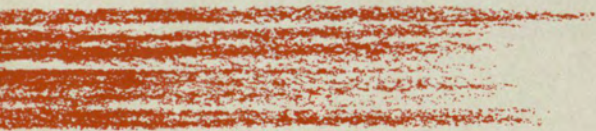


Freshman Class



WILLIAM MELVIN HOLT
ROSEMARY HUGHES
JOHN CHRISTIAN KLEIN

BILLY McWATERS
THOMAS MARR
JOHNNY MATRANGOS



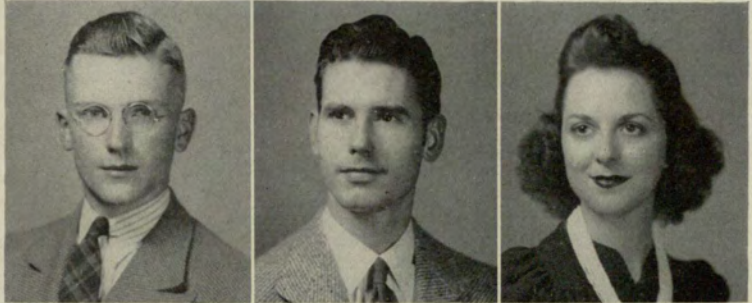


JEAN MILLARD
HENRY BASCOM MONTGOMERY

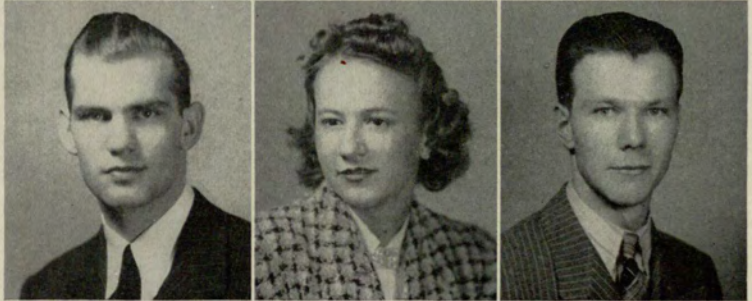
IDA MADGE MOORE
AZALIA MULKEY

Freshman Class

THOMAS N. NORMAN
MARION EDWARD PAFFORD
MARY JANE PARHAM



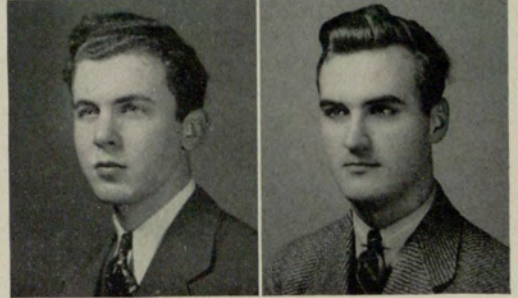
BEN FRANKLIN PERRY
LINDA PUCKETT
JOHN FRANCIS REILLY



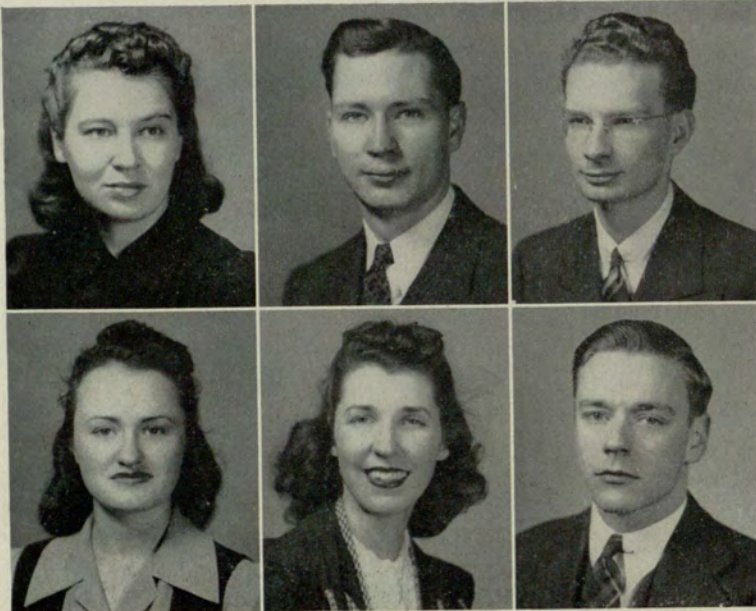
MARY ELIZABETH RHODES
MARIAN ROGERS



HENRY W. SATTERWHITE
ROBERT E. SIMMONS



Freshman Class



JACQUELIN SISK
LOUIS DANIEL SPECHT
BEN F. TUCK

BETTY L. WILLIAMS
KATHRYN E. WITT
ROBSON C. WRIGHT



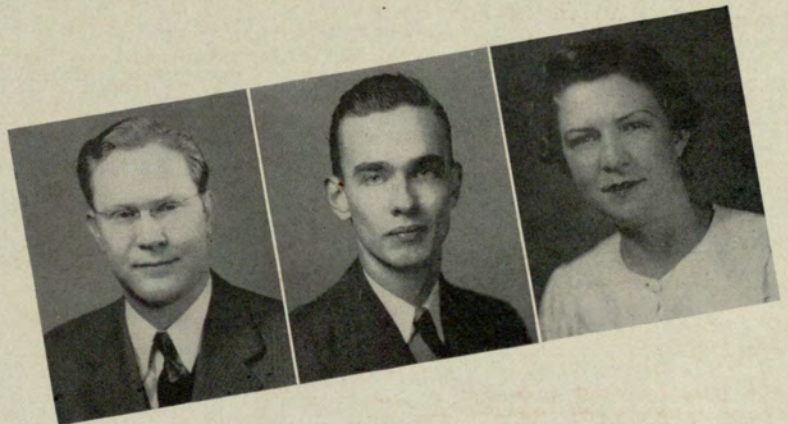
HOGAN BUFORD
JAN KELLER



GEORGE POPE
CLAUDINE STEWART

Freshman Class

CECIL TURNER
MORRIS WELLS
HOPE WILLIAMS



Freshman Class Roll

CHARLES EDWARDS ABERCROMBIE
MIRIAM T. ADAMS
CLARA EVANS ALEXANDER
HERMAN L. ALLEY
WILSON MASON AUSTIN
GEORGE J. AUTRY
HAROLD RICHARDS AYERS
WINFORD GRADY BANKS
MARGARET LUCILLE BARNES
MARY HELEN BARRON
ETHEL DEWELL BELL
JOHN WALKER BELL-ISLE
MRS. BOB BICKFORD
GEORGE N. BISHOP
WARREN L. BLACKMON
WILLIAM EDWARD BORDEN
JOHN W. BRACEWELL
PIERCE WESLEY BRISCOE
DONALD J. BRUNDAGE
HOGAN FORRESTER BUFORD
GERALD D. BULLOCK
GUILFORD M. BURDICK
FORREST H. CAIN
MARY ELIZABETH CALLAWAY
WILLIAM D. CALDWELL
FLORENCE E. CAMP
ARCHIE RICHARD CAMPBELL
WILLIAM D. CANNON
FRANCES ETHELYN CANTRELL
THOMAS D. CARLTON
MARCUS DOLVIN CARSON
B. PARKS CASTEEL
ROBERT P. CATLIN
SARA FRANCES CHELNA
LOUIS H. CONE
ROBT. ARTHUR CORLEY
WM. CHANEY CORLEY
WILLIAM PERRIN CORLEY
GEORGE C. CORRIGAN
ELIZABETH CORY
WARREN G. COSBY
CLAUDIA MARIE COUCH
KATHLEEN COX
VIRGINIA LEILA CRANE
MIKE O. CRAWFORD, JR.
SARA MAE CROCKETT
THORNTON ASKEW CRUMBLEY
WHIT S. CURBOW, JR.
JAMES A. DANIEL
VICTOR L. DAVIS
MARJORIE DEAN
JAMES CLEVELAND DeLAY
JOHN PHILLIPS DIERCKS
AMY DODD
PEDRO DODYS
WARREN A. DOUGLASS
ARTHUR R. DYER
THOMAS ARDELL EDWARDS, JR.
MRS. PAULA ELAM
ERNEST L. ELSNER
GRACE E. ELLIS
CHARLES MIKE ENGLISH
DAVID ENGLISH
EVELYN ENLOE
RALPH EUGENE ENLOW
ELIZABETH EPSTEN
JAMES M. ETHRIDGE
SAM EDWARDS FLORENCE
ARTHUR H. FOWLE
HUGO RUDOLPH FRANZ, JR.
CLYDE C. FREEMAN
WM. WILBURN FRITH

IDA MAE FROHMAN
LAURIE ELLA GANTT
MORTON LEE GILLESPIE
JACK GINN
ALBION H. GOLDEN
JACK GOLSON
C. L'ENGLE GRAHAM
CLARENCE LEON GREENE, JR.
PATRICIA McDANIEL GROW
JACK EDWARDS HALL
NENA FRANCES HAMBY
JAMES HAROLD HANCOCK
FLORENCE ANGELINE HANJARAS
KATHRYN HAYES
ROBT. J. HEAD
HENRY LUCIUS HILDERBRAND
GUELDA MAE HEAVEN
JUNIUS PRESTON HILL
THOMAS JACKSON HILL, JR.
ROBERT BURGE HOLDER
WILLIAM MELVIN HOLT
JUNE HOPKINS
SAM E. HOUSTON, JR.
GEORGE R. HOWELL
VELVA T. HUDGINS
BEN H. HUDGINS
ELOISE HUNTER
JAMES D. IRWIN
JIM T. HYDE
ANITA GLENDORA IVEY
PAUL P. JACKSON, JR.
JOHN BERNARD JACOBS
NEWMAN A. JACOBS, JR.
DIXON C. JAMISON
ALLEN ORMAND JERNIGAN, JR.
BOBA VILLA JOHNSON
JOHN S. JOHNSON
JOSEPH EARLE JOHNSTON
ARTHUR BUFORD JONES
W. JAN KELLER
CLARENCE L. KING
RUTH ELOISE KINNETT
CHARLES J. KINSEY, JR.
JOHN CHRISTIAN KLEIN
CHARLES C. KNIGHT
KAREN KRUPP
JAMES L. KNIGHT
ALLEN E. LANE, JR.
IRENE LAUGHLIN
RUTLEDGE LAURENS, JR.
VICTOR S. LEAF
JAMES RUSSELL McCLURE
ROBERT B. McCORD, JR.
SARA NELL McELREATH
MARY LOUISE McENTOSH
BRUCE A. McKINLEY
HUGH A. McMULLEN
BILLY McWATERS
JOHN W. MALOOF
WM. THOMAS MARR
DAVID LEE MASON
KENNETH W. MATHEWS
MAHLONE WALLACE MATTISON
HELEN MAYO
HIRAM LLEWELYN MIDDLEBROOKS
JEAN F. MILLARD
WM. C. MILLER
EDWARD E. MILLIGAN
CHARLIE MITCHELL
HENRY BASCOM MONTGOMERY, JR.
A. LAWRENCE MOORE
IDA MADGE MOORE
AZALIE MULKEY

JAMES MARVIN NICHOLSON, JR.
THOMAS HALL NORMAN
MARY MARGARET NORRIS
NICHOLAS ALOYSIU O'SHEA
CARL EDWARD OSTEEN
JOE OVERBY
HUGH CARL OWEN
L. ROY OWEN, JR.
MARION EDWARD PAFFORD
MARY JANE PARHAM
DOROTHY PARKER
ERNEST PAYTON
HOWARD V. PENDLEY
BEN FRANKLIN PERRY
HELEN PITMAN
LUCY DARDEN PITTMAN
GEORGE C. POPE
VERNON COKE PRICKETT
HENRY C. PUCKETT
LINDA PUCKETT
JOHN N. PUGMIRE
CLYDE QUIGLEY
JOEL C. REEVES
JOHN S. REID, JR.
JOHN FRANCIS REILLY
MARY ELIZ. RHODES
CARY GLENN RICHARDSON
HORACE RICHARDSON
JOHN DAVIS ROBERTS, JR.
MARIAN ROGERS
HENRY WEVER SATTERWHITE
HAROLD SCOTT
RALPH B. SCOTT
MARY ELIZABETH SHELTON
EDWARD SHIVER
SEWELL CY SILLMAN
ROBERT E. SIMMONS
WM. S. SIMMONS
JACQUELIN SISK
JETTY JO SMITH
LOUIS DANIEL SPECHT, JR.
EDWARD J. SPEIR
JAMES SPURLOCK
HOWARD F. STAKELEY
GEORGE STANFORD
EDYTHE ELINOR STEVENS
EDWARD STEWART
FLUKER G. STEWART
MARGARET L. STOW
ROLAND CORTEZ SUTTLES
HILDRETH S. TAYLOR
FRED D. TERRY
ESTELLE B. THEBAUT
GABRIEL L. THOMAS
JAMES D. TIMMIE
BEN F. TUCK
J. SINGLETON WALDROP
FRANK B. WARD
THOMAS L. WATERHOUSE
JAMES M. WELLS
ERNEST H. WEST
CHARLES L. WHALEY
ANN C. WHITE
VIRGINIA N. WHITE
MRS. BETTY L. WILLIAMS
HARRIET F. WILLIAMS
GEORGE W. WILLINGHAM
MARY ELIZABETH WILLINGHAM
KATHRYN E. WITT
GRACE D. WOOLEY
J. DOUGLASS WORLEY
ROBSON C. WRIGHT
MRS. ROSE S. YOUNG

These Next Pages



Are dedicated to the hundreds of students on the Georgia Evening College roll to whom our school is a precious fountain from which they can drink of the water of knowledge when they become thirsty.

Among them are teachers, mechanics, business men and many other professional and business people who are drawn into our classrooms because their jobs demand more preparation or because they feel a certain course will prepare them for work to come.

To them, Georgia Evening College is a beacon which cuts brightly through the haze of everyday life and toil, ever ready to guide them toward the safety of deep harbors.

Special Students



JOHN HOLLIS ALLEN

MARTHA LOUISE ALLEN



DOROTHY AILENE BARRON

EDWIN TAYLOR BECKHAM



DEAN BROOME

Laura Mae Campbell



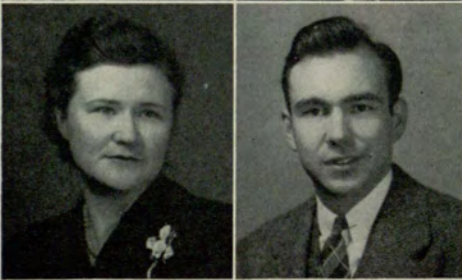
DAN L. CARMICHAEL, JR.

MARGIE ELIZABETH CHEATHAM



SARA ELIZABETH COCHRAN

KIMSEY WARE DAVIS



LOYCE DOUGLAS

JACK NORTON FENDER



MARION FLEWELLEN

DONALD FLOYD

RUTH FORTNER

Special Students

WILLIAM CLAUDE HATCHER

JACK F. HOFFMAN

LATRELLE HOFFMAN

BETTY JAMES HOLLIMAN

GRADY MILTON HUNT

KATHERINE HUTCHINSON

JASON N. JANOULIS

KENNETH P. KING

JOSEPHINE RUTH MCKAY

JAMES EDWIN MARTIN



NENA F. PAYNE

HELEN RHYNE

SARA JO RICE

DOYLE A. MYERS

BEN R. PADGETT, JR.

Special Students

LOUIS ROGERS

ANDREW R. SACKETT

THOMAS CARLYLE SAWYER

MYRTLE A. SECKINGER

FRIEDA ANN STRICKLAND

DORIS LAVERNE SULLIVAN

THOMAS D. TOLER

MARY JANE TURNER

J. SINGLETON WALDROP

WARREN A. WALKER

J. SINGLETON WALDROP

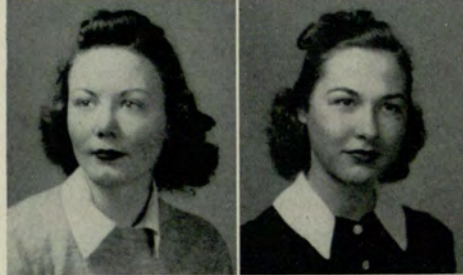
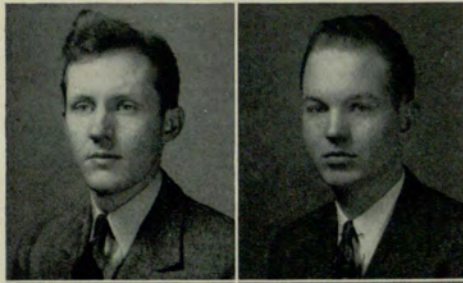
WARREN A. WALKER

J. SINGLETON WALDROP

WARREN A. WALKER

J. SINGLETON WALDROP

WARREN A. WALKER



VIRGINIA WALLACE

DOROTHY E. WATSON

LAURA RUTH WEBB

NELL WILLIAMS

HOPE WILLIAMS

KATHARINEE E. WILLIAMS
 MILDRED T. WILLINGHAM
 BRAD WOFFORD
 J. R. ZACHARY



Special Class Roll

ARMANDO ABREU
 ROBERT ACKERLY
 CHARLES McNEIL ADAMS
 SARAH LEE ADCOCK
 BETTY AKERS
 FRANCES LENORE AKINS
 MARY ELIZABETH ALEXANDER
 WALTER O'NEAL ALLANSON
 GRAHAM MacRAE ALLEN
 JOHN HOLLIS ALLEN
 MARTHA LOUISE ALLEN
 MILDRED ALLEN
 LORRAINE DORNA AMOS
 DOROTHY ELIZ. ARNOLD
 RUTH WINNER ASTIN
 JACK P. AUSTIN
 JOHN AYCOCK
 GEORGE BERNARD BABB
 HAROLD LAMAR BACCHUS
 JAMES WATSON BACCHUS
 DORIS BAILEY
 JAMES AUGUST BAILEY
 JAMES EMMETT BAIRD, JR.
 HERBERT KENNETH BALDRY
 CAROLYN VIRGINIA BALL
 JOHN JAMES BANDY
 FRANCES HARRIS BARNES
 LEON GOODMAN BARRETT
 BEATRICE B. BARRON
 DOROTHY AILENE BARRON
 CHOYCE BARROW
 FRED ANTHONY BARTON
 BETTY MAE BAUGHN
 MARION LOUISE BAUGHN
 JOHN MELVIN BEAN
 ANNE MARIE BECKER
 EDWIN TAYLOR BECKHAM
 EDWARD LEE BEDDINGFIELD
 SAM H. BENNETT, JR.
 CLARA BENNETT
 MARY LOUISE BENNETT
 FRANK LOUIS BENSON, JR.
 MARGUERITE AMELIA BERNAL
 JOE M. BEUTELL, JR.
 BOB BISHOP
 DOROTHY VIRGINIA BISHOP
 WM. REESE BLACK
 BILL H. BLACKSTONE
 WM. HUGH BLACKWOOD, JR.
 FLORA D. BLEDSOE
 BELER GRAYSON BLEVINS
 MRS. W. PHILLIPS BLISSITT
 EVELYN VIRGINIA BOGGS
 MRS. IRMA CLARK BOLING
 CLIFFORD M. BOOKER
 OLIVER JACKSON BOOKER
 CHARLES J. BOSSHARDT
 CATHLEEN PATRICIA BOWEN
 JONATHAN AVERY BOWMAN
 ETHEL VARA BRADEY
 LEJEUNE BRADLEY
 DOROTHY BRAGG
 CALVIN THORNTON BRAMBLETT
 ANNA LEROY BRANDON
 MARCUS ELI BREWSTER
 R. MARVIN BRIDGES
 MRS. RUBY LYNNE BRIGGS
 BERNICE ESTELLE BRINSFIELD
 FRANKIE LAVINA BRINSFIELD
 JOHN W. BRINSFIELD
 MRS. MARIETTA BRINSFIELD
 MARGARET RUSSELL BRINSON
 THOMAS HENRY BROADNAX
 JOHN LOUIS BROMBERG
 THOMAS GARRET BROOKS
 DEAN BROOME
 FLOYD WM. BROOME
 ALFRED E. BROWN
 HARRY O. BROWN
 INEZ E. BROWN
 MARGUERITE BROWN
 MARY CLARICE BROWN
 MARY EVELYN BROWN

NELL BROWN
 PETER J. BROWN, JR.
 ROBERT C. BRYAN
 SPEDE JOE BRYAN
 DORIS G. BRYANT
 ROBERT EUGENE BRYANT
 GERALD BOOTH BUFORD
 LILLIAN VIRGINIA BULLMAN
 ELIZABETH BUICE
 JAMES EDWIN BULLOCK
 MERLE IRENE BURKS
 H. P. BURNETT, JR.
 EUNICE BURSON
 MARY LOU BUSH
 CHARLES ANDERSON BUTT, JR.
 NAOMI BYRD
 CLARENCE W. CAIN
 MARK N. CALDWELL
 EDNA B. CALLAHAN
 EUGENIA CHANDLER CAMP
 MRS. R. T. CAMP
 DOUGLAS S. CAMPBELL
 LAURA MAE CAMPBELL
 WM. BOSTWICK CAMPBELL
 ELLEN H. CANNON
 ROBERT LEROY CARLSON
 DAN L. CARMICHAEL, JR.
 ROBERT LYONS CARMICHAEL
 WILLIAM MALINOUS CARMICHAEL
 JAMES C. CARROLL
 CLIFFORD A. CARTER
 MARJORIE E. CASH
 WILLIAM FRANK CASH, JR.
 JOSEPHINE A. CASTLEBERRY
 ELIZABETH ANN CATHCART
 WILLIE MAE CATHCART
 LOUTRELL CAUDELL
 HARRY CENKER
 MILDRED CHAFIN
 MARY E. CHAMBERS
 THOMAS WARREN CHANDLER
 WM. D. CHANDLER
 JAMES CHAPMAN, JR.
 MARGIE ELIZABETH CHEATHAM
 FRANK MARSHALL CHILDS
 BLAKE STEWART CHILTON
 NORMA L. CLINKENBEARD
 MRS. KATHLEEN M. COBB
 SARA ELIZABETH COCHRAN
 DON JAMES COFFEY
 J. W. COFFEY
 JOSEPH J. COHEN
 RAYMOND EDMUND COLE
 RUTH HELEN COLLEY
 C. V. COLLINS
 MRS. MARY W. COLLIER
 NAT FORREST COLLINS
 HENRIETTA J. COLQUITT
 MILDRED D. CONKLE
 GOBER CONNER
 MARGARET E. COOPER
 BEN W. COTTON, JR.
 CARTER M. COWART
 CLAIRE ELIZABETH COVINGTON
 HAROLD E. CRANFORD
 MARY NELL CREW
 LLOYD CROWE
 RICHARD H. CROWE
 JAY CUMBA
 MRS. BEVERLY C. CURBOW
 BUFORD DALTON
 MARY ROSE DALY
 TROY M. DASHER, JR.
 FRANK DAVENPORT
 KARL E. DARIEN
 MRS. BESSIE D. DAVIS
 ERNEST DAVIS
 GEORGE MARVIN DAVIS
 KIMSEY WARE DAVIS
 LYNN A. DAVIS
 BEAUMONT DAVISON
 ELIZABETH DAWSON

JAMES M. DAWSON
 THOMAS C. DEAN
 GEORGE HARVEY DENNIS
 WALTER KENNON DENNIS
 DOROTHY DENSMORE
 DOROTHY DENT
 VEORA DEWBERRY
 WERNER L. DICKINSON
 ROBERT WILLIS DICKSON
 GERALDINE GRACE DILLARD
 JAMES ALEXANDER DILLARD
 WILLIAM CARVER DIXON
 MRS. CARMEN H. DOBBS
 HAROLD PARKS DOBBS
 WILLIAM H. DODDS
 MARK FRANCES DOOM
 MILDRED T. DORRIS
 ALBERT RICH DORSEY
 LOYCE DOUGLAS
 SUZANNE DOUGHERTY
 HATTIE DOWLING
 WILMER A. DOZIER
 JOE L. DUKE
 ORMAN P. DULAC
 LYMAN C. DUNCAN
 CONSTANCE DUPEY
 ALBERT ERNEST DYCHE, JR.
 DRURY NATHAN DYER
 EDNA CLAIR EARNEST
 RAYMOND EUGENE EASTY
 ALBERT J. EDMONDSON
 JAMES THOMAS EDWARDS, JR.
 ELIZABETH C. EFURD
 ERNESTINE E. EGART
 GERTRUDE EHRlich
 EVELYN K. ELLIOTT
 MRS. LOIS McKNIGHT ELLIOTT
 WM. J. ELLIOTT
 LOUISE L. ELLIS
 MRS. MARY LEE EMERSON
 MRS. HAZEL W. ENGLISH
 SARA M. ENTREKIN
 VIRGIL HERMAN ERGLE
 ROBERT CHARLES EVANS
 WILLIAM JACK EWING
 MRS. RUBY C. FELKER
 JACK NORTON FENDER
 JOSEPH BENJAMIN FENNELL
 ROBERT H. FERGUSON, JR.
 J. FRANK FETZER
 HOWARD T. FEW
 WILLARD EARL FIELD
 MRS. ADELE J. FITTS
 FRANK L. FLEMING
 FRANCIS MARION FLEWELLEN
 DONALD FLOYD
 WHITFIELD FOLSOM
 ROBERT A. FORD
 WILLIAM GREY FOREMEN
 FRED W. FORRESTER
 JANIE T. FORTNER
 RUTH FORTNER
 FRANK P. FOWLER
 JAMES EDWARD FOWLER
 LOIS FOWLER
 KITTY FRAZIER
 JACK IRVING FRIEDMAN
 ROBERT D. FRISHMUTH
 BEATRICE E. GALLAHER
 MILLARD EDWIN GAMBRELL, JR.
 MIRIAM GARBER
 BERNARD CLAY GARDNER
 MRS. DELORES J. GARDNER
 C. GREENE GARNER
 EARLE ELLIS GARRARD
 JOHN W. GARRETT, JR.
 MANUEL ARTHUR GAUNAURD
 WILLIAM R. GHEESLING
 BILL GIBSON
 HERSHEL GILBERT
 JULIA LEE GILBERT
 JAMES THOMAS GILES

GRACE ELIZABETH GLASS
LEE GLEATON
JOHN D. GLOVER
LOUISE LOVE GLOVER
MARY J. GOGGANS
ROBERT T. GOODIN
CHAS. E. GORDON
JAMES DAVID GRAHAM
MRS. CHARLES T. GRAY
HARRIET GREENE
HUGH GRESHAM
JIM GRICE
WYOLINE GRIFFITH
C. E. GUERIN
CHARLES W. GULLEY
MARY OWEN HADLEY
EMORY J. HAGAN
SAM G. HAHS
CAROL HALE
JOHN R. HALL
MELBA C. HALL
JAMES WM. HALL
JOHN D. HALLSWORTH
BETTY HAM
JOHN L. HAMES
CHERRY HAMILTON
FRANCES V. HAMILTON
PAUL HAMMOND
PINSON HAMMOND
MRS. MABLE DOUGLAS HAMRICK
ARTHUR E. HANCOCK
HERBERT C. HANEY
MATHILDA HANSON
RALPH HARDEMAN
THEODORE W. HARDEMAN
LOIS MAREE HARDY
ELIZABETH LEA HARRALSON
MRS. JOE M. J. HARREL
RUBY HARRELSON
JAMES HARRIS
ROBERT HARRIS
THELMA ELIZABETH HARRIS
THOMAS WAYNE HARRIS
ROBERT H. HARRISON
KING HART
EDWIN DANIEL HARWELL
WILLIAM CLAUDE HATCHER
WILLIAM A. HAWKINS
JACK HUBBARD HAYES
MILLARD HAYES
ROBERT M. HEARN
WM. M. HEARN
GUELDA MAE HEAVEN
LEONARD HEMPERLY
ELIZABETH HENDERSON
MARY ANN HENDERSON
JOHN HERNDON
STEPHEN B. HEYBACH
WILMONT HEYWARD
MARY R. HILDERBRAND
THOMAS HILTON, JR.
ALEXANDER H. HIRSCH
JOHN A. HOCKENHULL
JACK F. HOFFMAN
LATRELLE HOFFMAN
JIMMIE HOFFORD
LEONARD W. HOGE
MRS. HELEN B. HOLLAND
BETTY JAMES HOLLIMAN
CHARLES G. HOLLINGSWORTH
RALPH GARMON HOLLINGSWORTH
CATHERINE HOLLOWAY
MALCOLM HOLLOWAY
NORMAN HOLLYFIELD
KURT HOMBERGER
GEORGE HOOKS
WILLIAM H. HOSCH
FLOYD HOWARD
MARY GENEVA HOWARD
NELLIE K. HOWARD
GEORGE HOWELL
JAMES D. HOWINGTON
EVELYN CHRISTINE HUDGINS
MRS. HENRIETTA RUTH HUFF
MELBA HUIE
JAMES H. HULSEY
EVELYN LOUISE HUGHES
SARA F. HUMPHRIES
GRADY MILTON HUNT
MRS. HELEN HUNSINGER
ELOISE E. HUNTER
JANE HUTCHINSON
KATHERINE HUTCHINSON
AARON O. INGRAM
LOU VERA IVEY
MARY JEAN IVEY
GUY JACKSON

JIMMIE R. JACKSON
SPENCER JACOBS
JASON N. JANOU LIS
RAYMOND LEE JAMES
FRED HARRIS JOBSON, JR.
RICHARD JOEL
FRANKLYN HAROLD JOHN
CHARLES JOHNSON
RAYMOND A. JOHNSON, JR.
RICHARD H. JOHNSON
ROBERTA STEWART JOHNSON
EDWIN R. JOHNSTON
JAMES L. JOHNSTON, JR.
RUTH A. JOHNSTON
WILLIAM I. JOHNSTON
CHESTER LAWSON JONES
FLORENCE E. JONES
HARRY JONES
JAMES D. JONES
MRS. JOHN L. JONES
JOHN PAUL JONES
WYLY KING JONES
CHARLES M. JORDAN
H. BRADY KEENEY
WM. CHRISTOPHER KEISLING
MRS. HORTENSE JONES KELLEY
THOMAS RAY KELLEY
CHARLES H. KEMP
MERLE KENNON
ALICE NELL KERN
ANNIE RUTH KESTLER
WALTER KIDD
C. ARTHUR KILLINGSWORTH, JR.
KENNETH P. KING
THOMAS R. KING
CURTIS R. KIRKLAND
LAVERNE KIRKLAND
MARIE LILLIAN KLEIN
CHARLES C. KNIGHT
JAMES L. KNIGHT
CHARLES S. KNOX
GEORGE OTIS KOEHERLEIN
MARSHALL S. KOVSKY
MERRISS AILLEN KOWN
SONIA HILDA KRUGER
SUSAN WELLS LAFRAGE
J. FRANK LANE
ELEANOR LANHAM
SARAH CAROLYN LANHAM
KATHERINE FRANCES LANIER
RENE PARKS LANIER
HELEN C. LAVENDER
LONNIE T. LAWSON
EDWIN BELL LAY
BOB LEACH
ELIZABETH F. LEDBETTER
WM. EDWARD LENNARD
HIRAM D. LESTER
MRS. MINNIE B. LETT
JUDITH MARY LEWIS
MARIAN E. LEWIS
THADDEUS M. LIEUPO
MRS. ANNE HURJA LINDAHL
PAUL A. LINDIG
MRS. ALWILDA LINDSEY
MRS. E. G. LIPPINCOTT
E. G. LIPPINCOTT
BOBBY HARRISS LLOYD
JACK HART LLOYD
LINTON M. LONGINO
JOHN HINTON LOVEJOY
GRADY LAMAR LOVERN
JOHN A. LUDDY
HENRY EUGENE McAULIFFE, JR.
THELMA L. McBRAYER
MAURICE J. McCABE
LAURA JEAN McCAIN
EDITH McCALLIE
MRS. EVANGELINE C. McCAY
BESS HALL McCLELLAND
TOMMIE L. McCLURE
BETH McCONNELL
GEORGE T. McCURDY
CURTIS A. McDANIEL
CLYDE O. McDONALD
FLORENCE D. McDONALD
HERBERT EDWARD McDONALD
HOWARD JOSEPH McDONALD
SARAH McDONALD
MARY McDOWELL
JAMES H. McELROY
BESS MARIE McGAHEE
ROBERT J. McGARITY
ELIZABETH McGEE
ROBERT McANDREW McGREGOR
JOSEPHINE RUTH McKAY
FRANCES C. McKIBBEN

LEWIS MARVIN McKNEELY
CHARLES A. McLAIN
WM. DUNCAN McLAUGHLIN
THOMAS McLEMORE
ANDREW H. McMAHON
WILMER LOIS McNEELY
JACK B. McNEIL
DONALD McRAE
DUNCAN LANGSTON McRAE
NEIL J. McRIMMON
JAMES L. McWILLIAMS
FRANKLIN MADDEN
DON J. MAFFETT
MURIEL ESTHER MAFFAHEY
I. V. MALONE
EDWARD J. MALOOF
JOHN W. MALOOF
J. MALCOLM MANLEY
LUCY BEN MANNING
WORTH F. MANUS
JOYCE I. MARCHMAN
MRS. ANNIE M. MARTIN
DOROTHY MARTIN
EARNEST J. MARTIN
FAY MARTIN
JAMES EDWIN MARTIN
MORTON C. MASON
ROY HARDEE MASSEY
ALMA REE MATHENY
MARY E. MAULKIN
MALVIN H. MAYER
JAMES RAYMOND MEEK
GEORGE A. MEDCALF
MRS. GLADYS T. MEDLOCK
MARGARET LOUISE MARGENS
JEROME MERLIN
CLIFFORD MILAM
MRS. EMILY C. MILBY
MRS. ANNE MILLER
ERNEST L. MILLER
FRANCES V. MILLER
MARTHA LUCILE MILLER
WILLIAM F. MILLER
CLARENCE W. MILLS
WM. D. MINER
BAME D. MITCHELL
BETTYE CAROLYN MITCHELL
RAYMOND C. MITCHELL
YANTIS CRAWFORD MITCHELL
BENJAMIN MIZE
MRS. DAISY EAVES MOBLEY
WILLIAM GROSS MOCK
DOROTHY MONTGOMERY
JOHN MONTGOMERY
LAWRENCE MONTGOMERY
MARY CECILE MONTGOMERY
FAIRY ANNETTE MOORE
ARCHIE L. MORGAN
MARGARET LOUISE MORGENS
ANNE PAULINE MORRIS
EVELYN G. MORRIS
GEORGE WITHERS MORRIS
MARION FLOYD MORRIS
W. THOMAS MORRIS
EMMA LOU MOSS
MARGARET SHAW MOSS
ROBERT WESLEY MOTE
SARA W. MOULDER
MARIAN MOULSON
ALEXANDER S. MURA
DILLARD MUNFORD
ELLEN F. MURRAY
DOYLE A. MYERS
ALEXANDER M. NADING
GEORGE P. NATIONS
ROBERT F. NAY
MARY C. NEFF
JAMES WILBUR NEWBERRY
ROBERT S. NEWLIN
CONNIE SUE NEWSOME
MARY NICHOLS
MABLE NOLAN
PATRICIA N. NOOT
JAMES MARSHALL NORMAN
ARTIE NORRIS
EDMUND DEWEY NORRIS
SADA F. NORRIS
DONALD G. NORTHEY
EDMUND P. NORTON
JACK ROWLAND NORTON
T. EDWARD OBERST
THEODORE P. O'CALLAGHAN
ROY LILBURN O'HOWELL
RAYMOND O'KELLEY
ELLEN OLDHAM
MARY E. OLIVER
ETHEL DOROTHY O'NEAL

ANNE O'NEIL
MILDRED J. PACK
BEN R. PADGETT, JR.
CARL P. PALMER
ROBERT B. PALMER
WM. B. PANTER
GENIE HEARN PARK
RAYMOND E. PARKER
WINSTON PARKER
SARA PARTEE
FRANCES E. PARSONS
PAUL W. PATE
CLIFFORD PATTILLO
NENA F. PAYNE
SIDNEY PAZOL
CECIL PEACOCK
ANNA ESTELLE PECK
HELEN PEEK
MARY PEEK
THERON G. PENDLEY
WOODROW W. PENN
MARGARET N. PENNINGTON
CLYDE PERSONS
MAURICE F. PETERSON
HAZEL PETERSON
LILLIAN PETREE
MARTHA PETTEY
MRS. DORIS PHELPS
FRED W. PHILIP
EDMUND PHILLIPS
MRS. EDMUND PHILLIPS
LULA PHILLIPS
ERNEST PIERCE
FRANCES L. PINKERTON
HELEN RUTH PITTARD
HARVEY HERBERT PLASTER
MARY G. PLUMB
PAUL POETTER
ROBERTA KATHLEEN POOSER
MILLARD JOHNSON POSEY
WM. BERNARD POURNELLE
HARRY M. PRATT
HAROLD MILTON PRESCOTT
JEWEL C. PRESLEY
VERNON RALSTON PRITCHARD
PAULINE BEATRICE PULLEN
HAZEL PURDIE
CARROL H. PURCELL
FLORENCE ELIZABETH PURSELL
MRS. EUGENIA HOOPER PYRON
WILLIAM JACOB PYRON, JR.
RUDOLPH R. QUINN
JEAN RAGSDALE
OTIS RAGSDALE
SIBYL V. RAINES
POPE W. RAMSEY
MARY KATHRYN RAULERSON
JAMES RAWLINS
LEOVOTTO DELPHINE RAY
SARA H. REAGIN
HELEN REDDING
ROSLYN M. REDMAN
EDWARD REEVES
EUGENE BOB REEVES
JULIA WELLS REEVES
J. HALL REID
CHARLES L. REYNOLDS
HELEN RHYNE
E. B. RICE
JOSEPH H. RICE
SARA JO RICE
MARTHA ROSE RICHARDS
FRANK RICHARDSON
LEE RICHARDSON
LEWIS M. RICHARDSON
THELMA E. RICKENBACKER
ROLAND E. RIEFF
HERNDON E. RISNER
WM. G. RIVERS, JR.
HOMER E. ROBBINS
DONNA LOUISE ROBERTS
E. WINN ROBERTS
JAMES SMITH ROBERTS
CLAYTON G. ROBERTSON
FREDERICK PRESTON RODDEY
LOUIS ROGERS
MARIAN ROGERS
PHONSO JAY ROGERS
VERA MILDRED ROWTON
ANN RUBIN
MRS. NANCY K. RUBLE
W. H. RUFF
VIRGINIA GUMPH
BERNEVA GERTRUDE RUSH
HAZEL RUSH
MARY RUSTIN
ANDREW R. SACKETT

LAWRENCE DARDEN SAGGUS
HAROLD RONALD SAMPLES
MAX SANSING
SYBIL E. SAVAGE
THOMAS CARLYLE SAWYER
LEON J. SAYER
MARY ELMA SCHELL
MARY L. SCHLEIF
MYRTLE A. SECKINGER
WM. LEE SEWELL
FRED MILTON SEYMOUR
JAMES ALVIN SHANNON
RUTH SHAPIRO
CHARLIE B. SHEATS
ANDREW THOMAS SHEELS
CLARENCE H. SHIRLEY
OLAUS JACKSON SHIRLEY
B. GUY SHIVERS
JOHN SHOAF
SEABORN HALL SHOCKLEY
WM. NICHOLAS SHRADER
MONROE SHROPSHIRE
JIM GORDON SHURBUTT
HUBERT O. SIBLEY
FRANK CHARLES SILL
JACK C. SIMMONS
WILLIAM S. SIMMONS
WARREN CREIGHTON SIMPSON
JEAN WINBURN SINCLAIR
JAMES FRANKLIN SINGLETON
JOHN H. SINGLETON
CHARLIE SIRMANS
MRS. EVELYN GRIER SISK
JACQUELYNN SISK
JAMES M. SITTON
THOMAS JEFFERSON SLADE
FLORENCE SLEDD
MARY LOUISE SLIFE
DOROTHY G. SMITH
JANIE NELLE SMITH
DICK SMITH
DORIS AGNES SMITH
ROBERT HOWREN SMITH
MRS. ROBERT EUGENE SMITH
MARY ELLEN SMITH
WILLENE EUGENE SMITH
MARTHA LOU SMITHWECK
EDWIN SPENCER
HOWARD B. SPROUSE
MRS. ADELAIDE P. SPURGIN
MURRAY S. SPURGIN
MRS. M. HIGHTOWER STALLUP
GEORGE B. STANFORD
KATHLEEN STARR
VIRGINIA STARR
REX DORSEY STEED
ROBERT L. STEED
BRUNO F. STEIN
FRANK STEINHEIMER
DOROTHY ANNE STEPHENS
BUSTER STEWART
CLAUDINE JEANNETTE STEWART
ROY STOCKARD
ELEANOR LOUISE STOCKDALE
FRANK STONE
KENNETH VASHTIE STORY
THOMAS STOVALL
EDITH STOVER
FREIDA ANN STRICKLAND
ROBERT LEE STRICKLAND
WM. C. STRICKLAND
FRANK P. STUBBS
DORIS LAVERNE SULLIVAN
WM. EVERETT SULLIVAN
FRANCES SUMMERLIN
FRANK SUTTON
FRED CYRIL SWELL
HILDRETH S. TAYLOR
JACKSON P. TEAGLE
DIXON M. THACKER
JOE R. THIGPEN
MRS. JOE THIGPEN
LON C. THOMAS
CHARLES D. THOMPSON
HAROLD THOMPSON
HUGH D. THOMPSON
JANE E. THOMPSON
MARY A. THOMPSON
DENTON THORNE
DOT L. THORNTON
CHARLES S. THORP
PERCY G. THRELKELD
JAMES D. TIMMIE
LONNIE TINSLEY
VIVIAN B. TODD
THOMAS D. TOLER
MRS. NELL YATES TOLLIVER

MARVIN R. TONEY
ANNA TOWNSEND
FORREST L. TRAYLOR
ALVA C. TRAYNHAM
ALBERT ROY TRIPPE, JR.
THOMAS C. TUCKER
ALBERT D. TURNER
BETSY A. TURNER
ELDRIDGE H. TURNER
JOEL O. TURNER
LEON D. TURNER
LESTER C. TURNER
MARY JANE TURNER
CLAUDIA TWIGGS
MRS. LUCRETIA P. ULMER
MARY I. UPWORTH
JOSEPH F. VALDEZ
MARY H. VAN OSDELL
JOE A. VAUGHN
CHARLES VINSON
EDWIN HALL WADDELL
ALVIN WAGNON
MARVIN B. WALDRIP
J. SINGLETON WALDROP
CHARLES R. WALKER
JOHN R. WALKER
MADELINE WALKER
WARREN A. WALKER
CHARLES H. WALL, JR.
CORNELIA WALLACE
PAUL D. WALLACE
VIRGINIA WALLACE
FRANK B. WARD
JACK B. WARD
MARION E. WARD
BARNEY T. WARE
BILLIE MAE WARREN
MRS. VELVA WARE
WALTER W. WATKINS, JR.
DOROTHY E. WATSON
LAURA RUTH WEBB
MRS. MATTIE M. WEBB
EDWARD S. WEEKS
ELOISE WEEKS
JAMES L. WEISIGER
VIRGINIA WELLBORN
ELIZABETH WESSINGER
MRS. E. W. WESTMORELAND
KATE WESTMORELAND
ANNA M. WHELCHER
HELEN M. WHELDON
JACK C. WHITE
JOHN M. WHITE
GRADY E. WHITNEY
CHARLES WHITWORTH
KATHRYN W. WICKER
HEDLEY B. WILCOX
CLAUD WILLIAMS
DOROTHY NELL WILLIAMS
EMILY H. WILLIAMS
HAROLD L. WILLIAMS
HAZEL J. WILLIAMS
HOPE WILLIAMS
KATHARINE E. WILLIAMS
RAYMOND WILLIAMS
ROY THOMAS WILLIAMS
RUTH I. WILLIAMS
MARY L. WILLIAMSON
C. WYLLY WILLINGHAM
CHARLES B. WILLINGHAM
MILDRED T. WILLINGHAM
MARGARET L. WILLIS
MRS. L. A. WILLS
HERBERT A. WILSON
JOSEPH WILSON
MRS. MARY G. WILSON
MARY I. WILSON
ROGERS WINTER
VALERIA WISE
HARVEY N. WITCHER
BRAD WOFFORD
JOSEPH H. WOLFE
CHARLES N. WOMACK
ALESON B. WOOD
L. HAZEL WOOD
WM. A. WOOD, JR.
MRS. BESSIE WOODRUFF
MARY A. WORLEY
O. ED WORLEY
MRS. CELESTE S. WRIGHT
CLIFFORD M. WRIGHT
FRANCIS P. WRIGHT
NORMAN J. WRIGLEY
JAMES B. YOWMANS
J. R. ZACHARY
EDGAR A. ZIMMERMAN



Organizations . . . Fraternities
. . . Sororities . . . Which way
is he going? . . . Check those
grades . . . Signal . . . Where's
your news . . . Nocturne . . .
Pictures . . . Dances . . . Im-
press those prospects . . . For-
mals . . . House Parties . . .
Oh, what a school.



O U R A C T I V I T I E S

TIME OUT FROM STUDY — ODD MOMENTS AND HOW THEY ARE SPENT



Student Council

JOE RHYNE President
 BRITT SANDERS ... Vice-President
 HOMER T. BREWER Secretary
 WALLACE NORRIS Treasurer

EXECUTIVE COUNCIL

| | | |
|-----------------|---------------|-------------|
| SENIORS | JUNIORS | PRE-JUNIORS |
| HOMER BREWER | BRITT SANDERS | ALDO GARONI |
| CHARLES DARNELL | TOM LUCK | AL JONES |

| | |
|----------------|-------------------|
| SOPHOMORE | FRESHMAN |
| WALLACE NORRIS | FRANK DiCHRISTINA |
| JIMMIE McNABB | FORREST CAIN |

Evening Signal: BOOTS HOAGE - GEORGE BECKHAM
 Nocturne: AL KUETTNER - CHARLES DARNELL



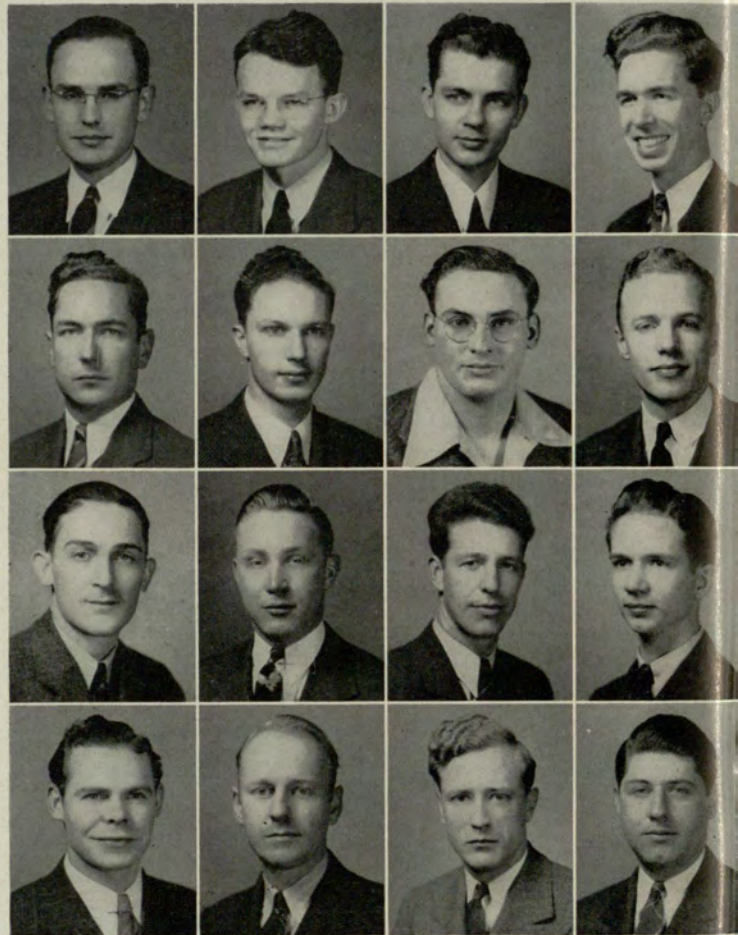
Top (left to right): Norris, Rhyne, Sanders and Brewer discuss pertinent student affairs. Below: S. D. Tanner points to results of Council's efforts to make school safer in case of fire. Brewer and Rhyne look on.

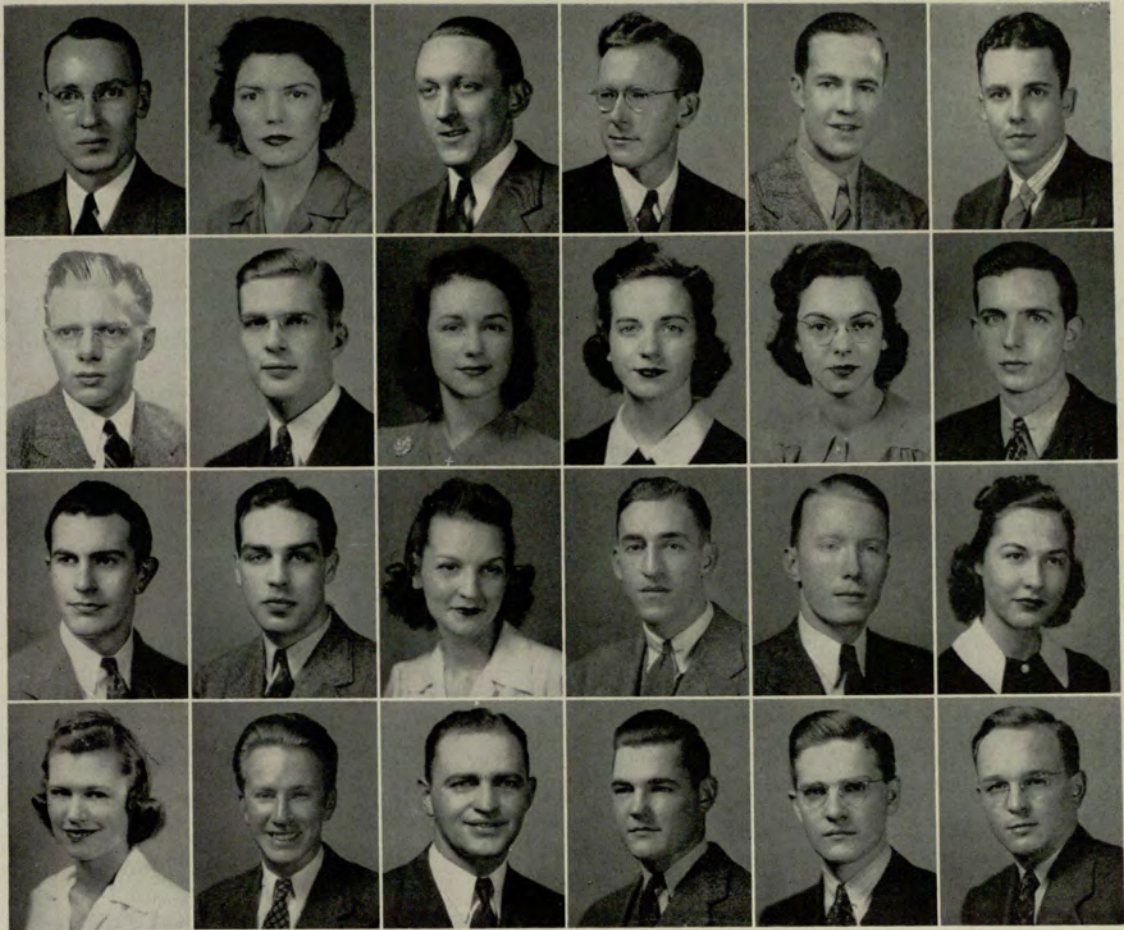
IRA ABERNATHY
 ARCHER BAIRD
 GEORGE BECKHAM
 HOMER BREWER

ERNEST BOLEN
 WALTER BUCHANAN
 FORREST CAIN
 EDWIN CLARK

CHARLES DARNELL
 FRANK DiCHRISTINA
 HAROLD DUNCAN
 GEORGE EDWARDS

DAVID ENGLISH
 HARRY FENN
 SAM FRANKLIN
 ALDO GARONI





Left to right: James Gaston, Boots Hoage, DeWitt Hunt, Al Jones, Bill Jordan, Jan Keller, Al Kuettner, Tom Luck, Mary Louise Mayes, Madge Moore, Vera Murray, James McNabb, Wallace Norris, Rex Pruitt, Mary Shelton, Britt Sanders, Bob Sims, Doris Sullivan, Kay Tabor, S. D. Tanner, Jr., McCoy White, Roy Wicker, Fred Windham, John Zachary.

Classroom Representatives

IRA ABERNATHY
 BILL ALLEN
 ARCHER BAIRD
 ERNEST BOLEN
 WALTER BUCHANAN
 FRANK CARTER
 EDWIN CLARK
 RUTH COLLEY
 CHARLES COTTON
 JAMES DAVIS
 HAROLD DUNCAN
 PETE EVES
 GEORGE EDWARDS
 DAVID ENGLISH
 HARRY FENN

SAM FRANKLIN
 JAMES FREEMAN
 JAMES GASTON
 JIM HALL
 DEWITT HUNT
 AL JONES
 ELIZABETH JONES
 WILEY JONES
 BILL JORDAN
 JAN KELLER
 MARY LOUISE MAYES
 MADGE MOORE
 VERA MURRAY
 REX PRUITT
 BILL RAMSDEN

LOUISE ROGERS
 MARY SHELTON
 CHARLES SILL
 BOB SIMS
 BETSY STOCKBRIDGE
 DORIS SULLIVAN
 KAY TABOR
 S. D. TANNER, JR.
 MCKOY WHITE
 ROY WICKER
 FRED WINDHAM
 JOHN YOUNG
 JOHN ZACHARY



Nocturne

S T A F F

AL KUETTNER Editor
WALLACE NORRIS . . Associate Editor
CHARLES DARNELL . . . Business Mgr.
LOUIS CORRIGAN . . . Advertising Mgr.
HAROLD TABOR Feature Editor
EVELYN MATHIS Picture Editor

Editorial and Business Assistants

CLAIRE HAMMOND
MARTHA KIRVEN
JIMMIE EDWARDS
BILL JORDAN
GEORGE POPE

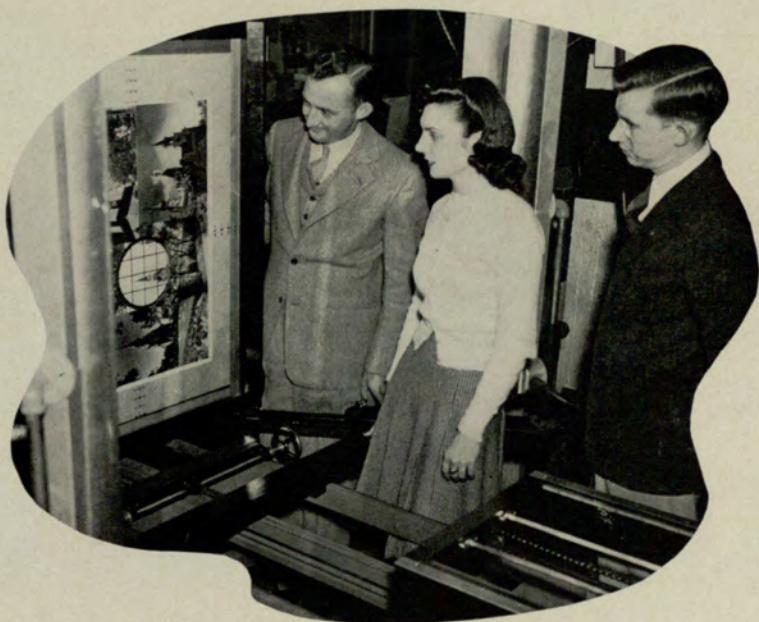


Editors Norris (left) and Kuettner burning midnight oil on layout and copy for 1941 yearbook.



Business Manager Darnell (left) and Advertising Manager Corrigan confer over prospective buyers of space. Both labored hard to raise funds to meet budget needed by editorial staff.

Pope, Mathis and Tabor
(left to right) stand at en-
graver's intricate camera as
copy is being "shot."



Whether this yearbook is a success to the extent we wish for it will not be decided today or tomorrow but in the after-years. If in that dim and distant future you occasionally thumb through its pages and gain pleasure and enjoyment from the memories it brings back to mind, then our job in 1941 has been a good one.



CORRIGAN
EDWARDS
JORDAN



KIRVEN
MATHIS
POPE



Under the jinx: The thirteen in this picture is significant, though accidental. The *Signal* staff worked many nights during the year, gave up numerous social affairs, in order to publish a good paper. Broome, Layton, Hoage and Blackmon (left to right) hard at work.

Early in the Spring Editor Dean Broome was forced to relinquish the job when he joined the editorial staff of an Atlanta newspaper. Publications Board elevated Boots Hoage to the editorship and named Warren Blackman associate editor and George Beckham business manager for the remainder of the year.

Issues under guidance of the new staff are already reflecting the same time and effort which characterized publications under the former staff's direction.

Publication of the *Evening Signal* is sponsored by Student Council and is directed by the Publications Board, composed of faculty and student leaders. The faithful reporting of student activities and the moulding of student opinion are to the *Signal* staff Duty and Purpose. Thus speaks the voice of a great student body through diligent effort and conscientious service.



BECKHAM



BROOME



HOAGE



LAYTON



ROBERT WINFREE
President



LAURA CAMPBELL
Secretary

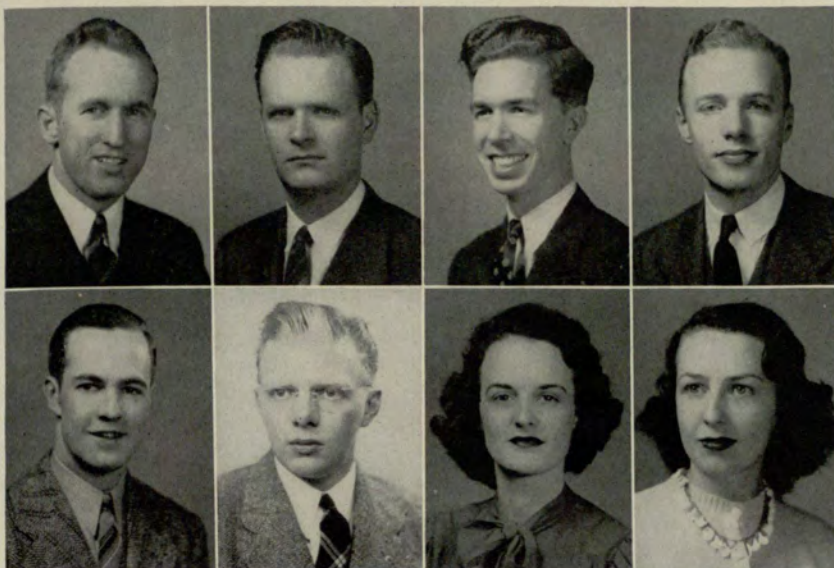
Inter-Fraternity Council

OFFICERS

ROBERT WINFREE *President*
AL KUETTNER *Vice President*
LAURA CAMPBELL .. *Sec. and Treasurer*



Kuettner, Winfree and Campbell at a typical Council meeting, granting dates for organization affairs.



STANLEY BOWDEN
 OTIS CHILDS
 HOMER BREWER
 ED CLARK

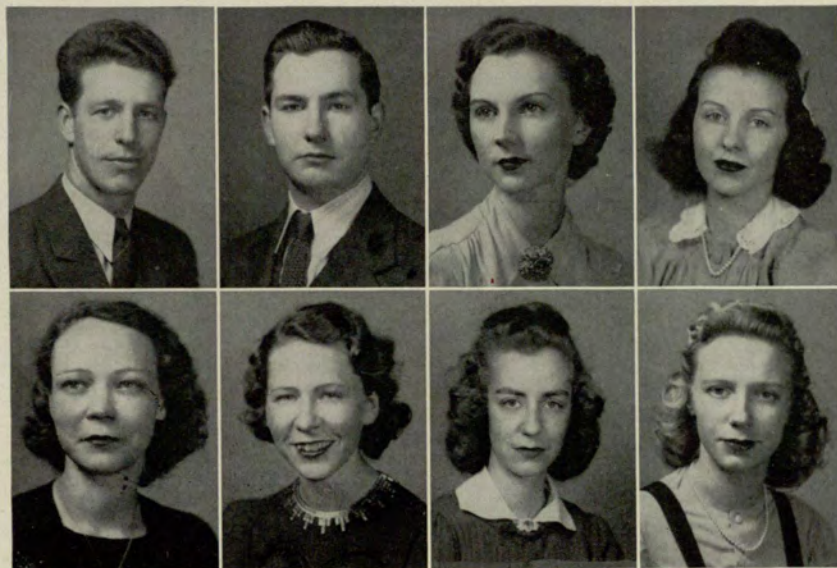
BILL JORDAN
 AL KUETTNER
 LOIS DOZIER
 JEAN JOHNSON

The sixteen members of Inter-Fraternity Council, representatives of eight member organizations, meet bi-monthly, work toward a closer harmony between fraternities, sororities and other groups in the school. Principal duties are the granting of meeting and social dates, control of pledging activity and general direction of organization functions.

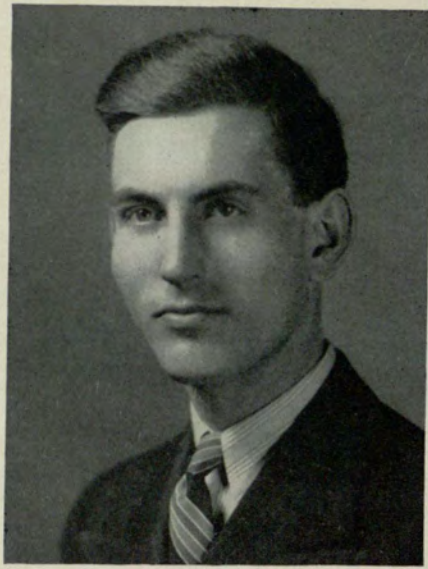
Representatives

- | | |
|-------------------------------|-------------------------------------|
| <i>Alpha Kappa Psi</i> | <i>Hilarian Club</i> |
| BILL JORDAN AL KUETTNER | MARY CALLOWAY DOROTHY ESCOTT |
| <i>Delta Kappa</i> | <i>Kappa Theta</i> |
| STANLEY BOWDEN OTIS CHILDS | LOUISE MARCHMAN JEAN MILLARD |
| <i>Delta Lambda Sigma</i> | <i>Phi Chi Theta</i> |
| LOIS DOZIER JEAN JOHNSON | CLAIRE HAMMOND FIDELIS KLOECKLER |
| <i>Delta Sigma Pi</i> | <i>Venetian Society</i> |
| HOMER T. BREWER ED CLARK | HAROLD DUNCAN CARL SIMPKINS |

HAROLD DUNCAN
 CARL SIMPKINS
 LOUISE MARCHMAN
 JEAN MILLARD



CLAIRE HAMMOND
 FIDELIS KLOECKLER
 DOROTHY ESCOTT
 MARY CALLOWAY



JACK ADAMS
President

Delta Mu Delta

OFFICERS

JACK ADAMS *President*

MRS. WILLATHEA JACKSON *Secretary*

THETA CHAPTER

Since the installation of Theta Chapter, June 9, 1931, Delta Mu Delta has done much to promote a higher standard of scholarship in the Evening College. This fraternity is to promote "higher scholarship in subjects set forth in the curriculum of the Evening College; to stimulate interest in the advancement of scholarly ideals; and to recognize and reward scholastic attainment in the studies as set forth above."

Through the Delta Mu Delta Honor Roll, published each quarter, the records of students of outstanding scholastic rating are acknowledged.

The election of members, selected from the Graduating Seniors, together with two undergraduates, honors those students who have successfully passed the rigid requirements for this, the only national scholarship fraternity in the Evening College.



MRS. WILLATHEA JACKSON
Secretary

1940

HANS BUTZON
MIRIAM CLARKE
FIDELES KLOECKLER
SARA FRANCES RAMSEY

KAY TABOR
MRS. KATE TAYLOR
EMILY ROBERTS

JAMES T. WILEY, JR.
ERNEST WRIGHT
EDWIN CLARK

1939

CATHERINE BAKER
TIMOTHY BULLARD
MAYMI WALKER CHANDLER
JAMES DAVIS

H. TALMADGE DOBBS
PICKETT HYNES
JAMES H. MCGUIRE
ORDRY PALMER

H. MAE TANKERSLEY
D. REBECCA WILLIAMS
HAROLD WILLINGHAM

1938

ELIZABETH ADAMS
E. W. ALDREDGE
ALBERT P. CLARK

ALICE S. DOWNING
MARY HAMMOND
ROBERT C. LOWE, JR.

THOMAS A. SEALS
H. EARL STRYING
M. CHRISTINE WING

1937

MARCIA BAKER
CLARENCE H. HILL
EWELL Y. JACKSON

ROBERT KIMSEY
T. M. MCCLELLAN
C. ED MARTIN

BEN OVERSTREET, JR.
HELEN TUCKER THOMPSON
R. DURWIN WHITE

1936

E. J. BARBER
TALLULAH DAVIS
LLOYD C. GINN

A. D. GREGORY, JR.
HILDA ISAKSON JACKSON
ROBERT JOHANN

SUSIE SUDDERTH
GEORGE WING

1935

LAMAR G. BAKER
REUBEN G. CRIMM
ELIZABETH CURTIS DEXTER

FRANCIS M. OSTEEN
MAURICE STRICKLAND

ROBERT STRICKLAND
TED J. WHITEHEAD

1934

MILDRED CHESNUT BROWN
FRANCIS DUGGAN

J. W. GOLDSMITH
M. D. HARPER, JR.

GEORGE MANNERS
ANTHA MULKEY

1933

F. C. BRANDES
N. E. BOSWELL

CATHERINE MARTIN DUGGAN

B. F. WELLS, JR.

1932

T. W. DUNCAN
MARGARET LLOYD

J. HARRY GAULT

RUTH ROGERS

1931

FAE ALLEN
W. W. AYCOCK
E. H. BISHOP
MARY CHEATAM BUCCHOLZ
L. C. EVANS
RICHARD A. HILLS
JOHN JANOU LIS

C. ROY MCCORMACK
H. C. KITCHENS
GEORGE E. PARKER
NORMAN E. PETTIS
JOHN M. REED, JR.
H. L. ROBINSON

C. S. SPINKS
BERNARD SUTTLES, JR.
M. GUY SWANSON
M. W. SWINT
C. Z. ZELLAR
J. W. ZUBER, JR.



HAROLD DUNCAN
President

Intramural Key

OFFICERS

| | |
|---------------|-----------------------|
| HAROLD DUNCAN | <i>President</i> |
| ED CLARK | <i>Vice-President</i> |
| FRANK CARTER | <i>Secretary</i> |
| MORRIS AMATO | <i>Treasurer</i> |

These Are Our Aims:

Intramural Key was founded in 1934 with the following purposes, found in the preamble to its Constitution:

1. A closer understanding and cooperative spirit among students, and between the student body and school administration;

2. An aspiration for greater intellectual achievement;

3. A study of student problems to the end that all student life may be enriched, and the progress and best interest of the Georgia Evening College, in which this organization is founded, may be stimulated and promoted.

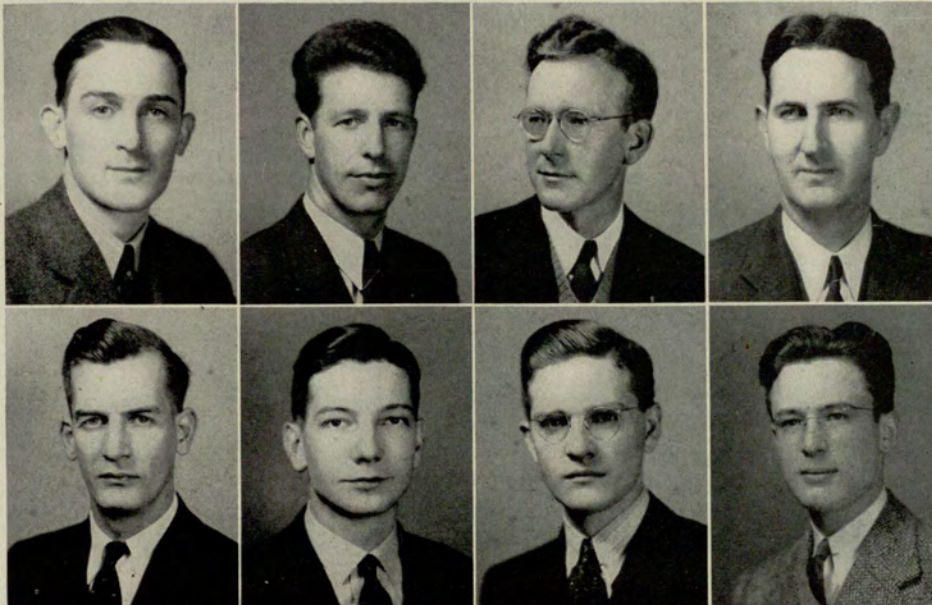
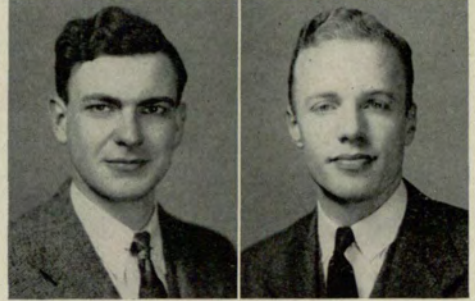
Freshman Orientation program. Carter talks to new students. Introduced Sparks, with back to camera in attitude of meditation.



MORRIS AMATO
HOMER BREWER



HANS BUTZON
ED CLARK



CHARLES DARNELL
HAROLD DUNCAN
AL JONES
T. M. MCCLELLAN

FORD RIVES
BILL SUTTLES
FRED WINDHAM
ED WITHORN

Crimson Key



EMMA BAIRD
RUBY CHAPMAN
LOIS DOZIER



BOOTS HOAGE
JEANNE JOHNSON
FIDELES KLOECKLER



LENA RUTH LAWRENCE
CLAIRE MANNERS
GENEVIEVE MURRELLE

OTHER MEMBERS: VIRGINIA HIATT, ELIZABETH ALLEN

VERA MURRAY
NELLE OSBORN
ELIZABETH RAMSDEN
EMILY ROBERTS



LOUISE SOWELL
KAY TABOR
ERLENE WHEELER
WILLATHEA JACKSON



OFFICERS

LOUISE MARCHMAN *President*
VIRGINIA HIATT *Vice President*
EMILY ROBERTS *Secretary*
ELIZABETH ALLEN *Treasurer*



To promote a closer understanding between Georgia Evening College students and the administration and to co-operate with faculty and organizations in the interest of scholarship, social activities and moral ideals is the aim of Crimson Key.

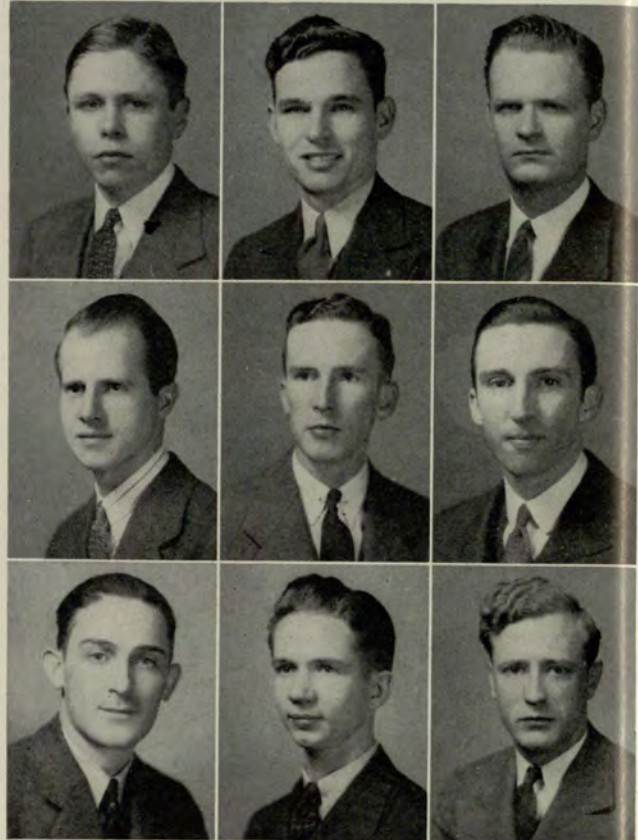


Scene at Freshman orientation, sponsored for women students by Crimson Key.



Dr. Sparks and President Jordan look over award won by Pi Chapter in efficiency contest during year. At top, A. K. Psi's football team, winner of annual Thanksgiving Day classic.

- OFFICERS**
- WILLIAM T. JORDAN *President*
 AL KUETTNER *Vice-President*
 CURTIS N. COOPER *Secretary*
 FRED O'KELLEY *Treasurer*
 LOUIS W. CORRIGAN. *Master of Rituals*
 JAMES GASTON *Chaplain*



FROM LEFT TO RIGHT—*Top row:* Jack Ball - Jack Cason - Otis Childs - Hugo Franz - James Gaston - Clyde Jackson - Bill Jordan - Jan Keller - Al Kuettner. *Second row:* Curtis Cooper - George Corrigan - Louis Corrigan - Billy McWaters - Wallace Norris - Fred O'Kelley - Ben Padgett - Cecil Pool - Robert Simmons. *Bottom row:* Charles Darnell - George Edwards - Sam Franklin - Carl Simpkins - Bob Sims - Harold Tabor - Bill Thomas - Ben Tuck - Virgil Zink. **OTHER MEMBERS:** John Cox - Joe Redwine - John Young.

Alpha Kappa Psi Fraternity

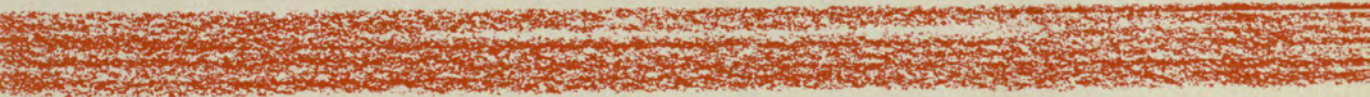
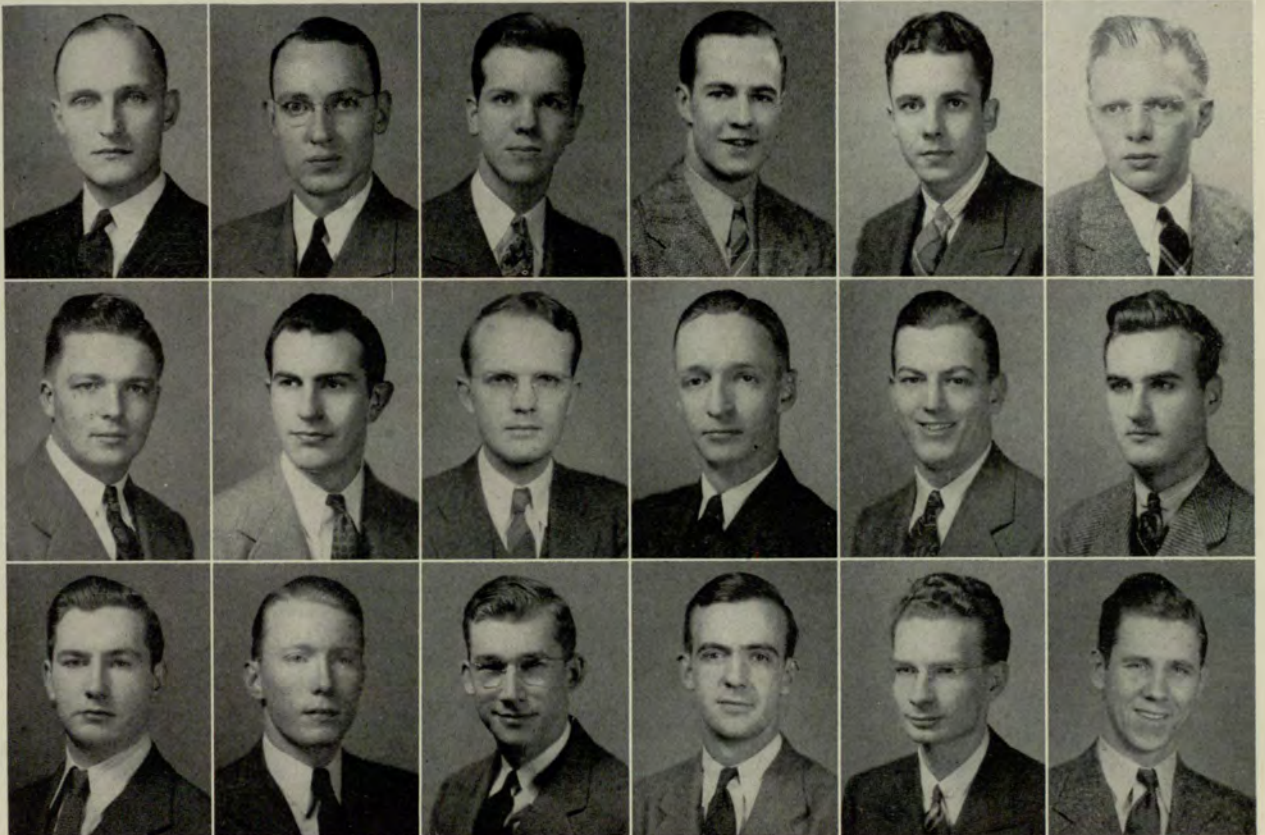


AT LEFT: Scene during annual Pi Chapter house party at Camp Rabun.

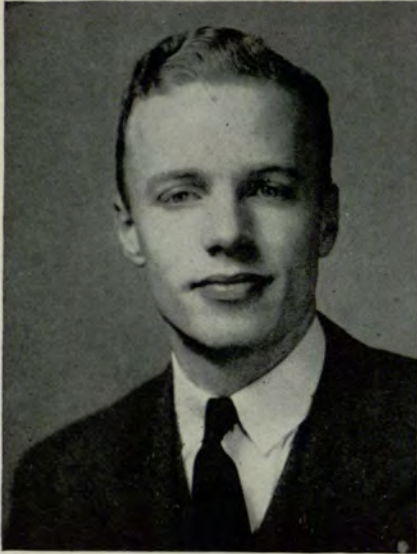
Pi Chapter of Alpha Kappa Psi Fraternity was installed November 27, 1917, as a professional fraternity in commerce and part of the national organization which was founded at New York University on October 5, 1904.



WILLIAM T. JORDAN
President



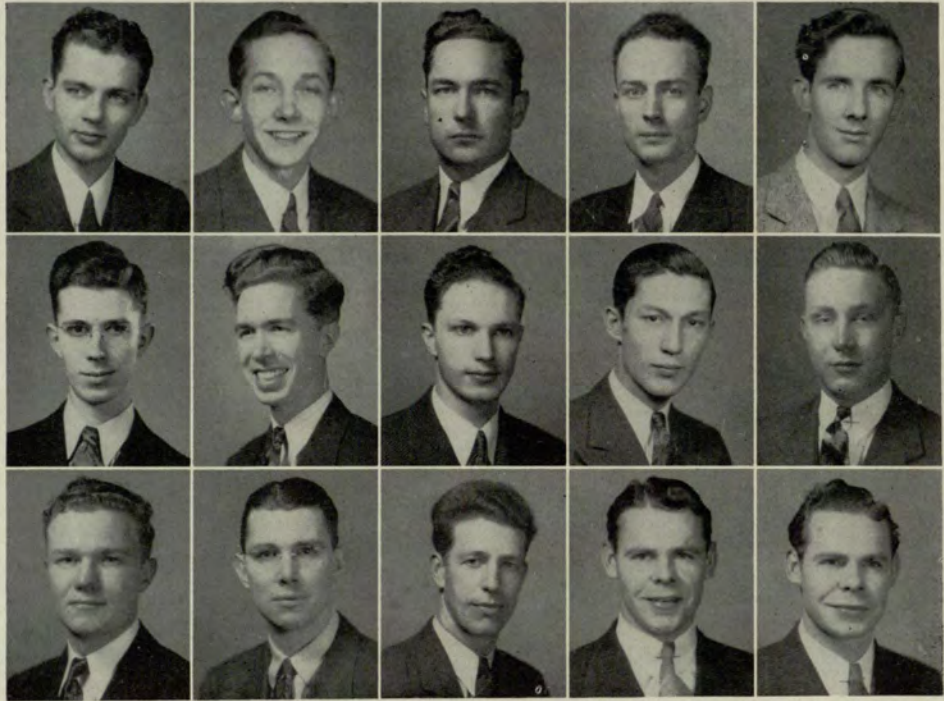
Alumnus Red Barron (right) cuts birthday cake at anniversary celebration. Below: Garoni (left) and Jones on the take-off.



EDWIN CLARK
President

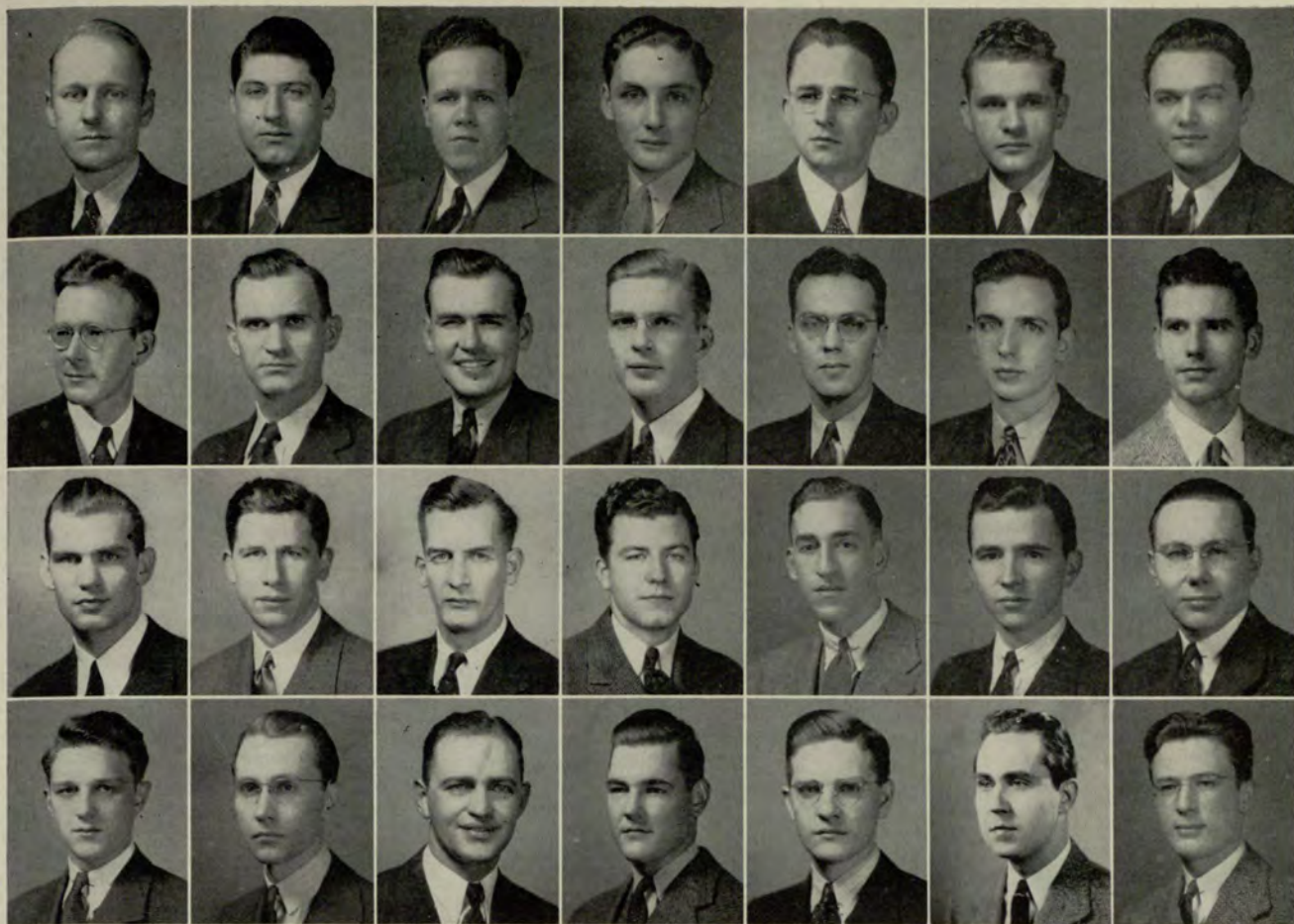
Kappa Chapter of Delta Sigma Pi Fraternity was installed March 12, 1921, a chapter of the international fraternity which was founded at New York University November 7, 1907.

FROM LEFT TO RIGHT—
Top row: George Beckham - Warren Blackmon - Ernest Bolen - Bill Bost - Charles Bowling. Middle row: Fred Branam - Homer T. Brewer - Walter Buchanan - Harry Cantrell - Frank DiCristina. Bottom row: William DeLoach - Charles Dobbins - Harold Duncan - Charles English - David English.



Delta Sigma Pi





FROM LEFT TO RIGHT, BEGINNING AT TOP: Harry Fenn - Aldo Garoni - Francis Gregory - Robert Hames - Hiram Honea - Neil Hopkins - Frank Inman - Albert Jones - Charles Leslie - Harvey Livingston - Thomas R. Luck - J. B. McCollum - James McNabb - M. E. Pafford - Ben Perry - Joe Rhyne - Ford Rives - O. C. Robbins - Britt Sanders - B. E. Smith, Jr. - Leo Stillman - Raymond Tiller - James T. Welch - McCoy White - Roy Wicker - Fred Windham - Robert Winfree - Edward Withorn.

OTHER MEMBERS: Luther Burroughs - James Byrd - Pat Dobbins - Roger Dozier - Wilbur Eaves - Robert Ferrell - Robert Griffith - Kenneth Peckham - Bill Ramsden - Charles Leslie - Lee Richardson - George Willingham - Emory Kinard - L. C. Duncan - Emory Johnson. FACULTY MEMBERS: H. E. Dennison - E. L. Floyd - G. E. Manners - William Lozier.

OFFICERS

EDWIN M. CLARK *Head Master*
 HOMER T. BREWER ... *Senior Warden*
 BILL BOST *Junior Warden*
 ALBERT JONES . *Master of Festivities*
 THOMAS R. LUCK . *Mas. of Ceremony*
 J. B. MCCOLLUM *Treasurer*
 FRANK CARTER *Historian*
 JOE RHYNE *Scribe*



Top: Two-story welcome to Delta Sig Lodge. LEFT: Doris Sullivan (left) and Ruth Pittard lead cheering section.



OTIS CHILDS
Governor




BOB WINFREE
Lieutenant Governor

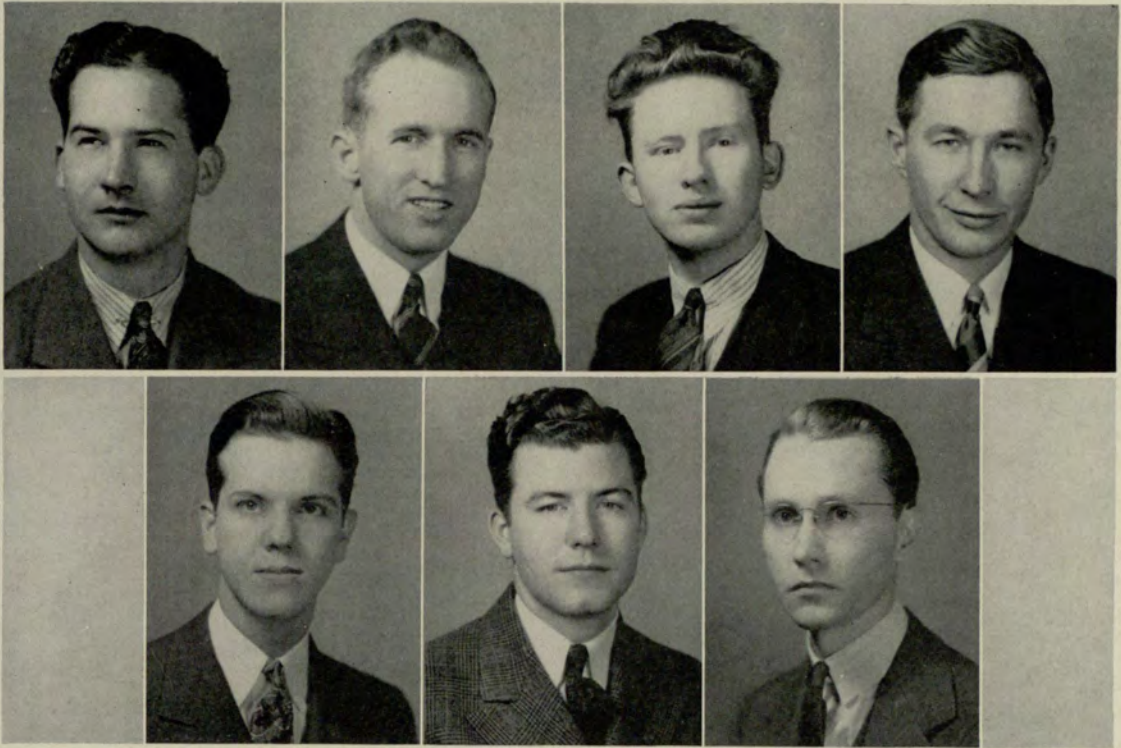
OFFICERS

| | | |
|----------------|-------|----------------------------|
| OTIS CHILDS | | <i>Governor</i> |
| BOB WINFREE | | <i>Lieutenant Governor</i> |
| BRUCE MCKINLEY | | <i>Treasurer</i> |
| ARTHUR FRENCH | | <i>Secretary</i> |
| STANLEY BOWDEN | | <i>Master of Rituals</i> |

The purpose of Delta Kappa Fraternity is to promote a close relationship among men, a better understanding between them as gentlemen and particularly brothers; to encourage a high code of moral conduct, constructive and ambitious activity, and to fulfill the ideals as set forth for each member of the Delta Kappa Fraternity.

Delta Kappa Fraternity





Top row: John Allen - Stanley Bowden - Frank Cloudt - Jack Diercks. *Bottom row:* Clyde Jackson - O. C. Robbins - James Welch.

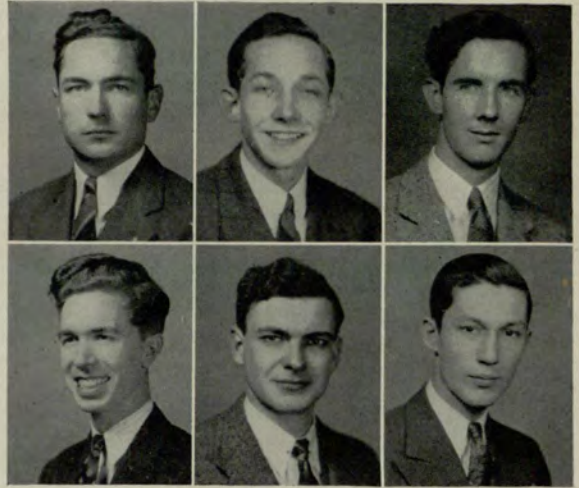
Other Members: Howard Allison - Mack Alspaugh - Bill Borden - Neil Crawford - Charles Kinsey - Fred Scarbrough - Bill Suttles. *Faculty Members:* J. H. McGuire - J. C. Brown - R. C. Moor.



Venetian Society

OFFICERS

ERNEST BOLEN *President*
AL KUETTNER *First Vice-President*
HAROLD DUNCAN *Second Vice-Pres.*
O. C. ROBBINS *Secretary*
BOB GRIFFITH *Treasurer*
LEO STILLMAN *Historian*

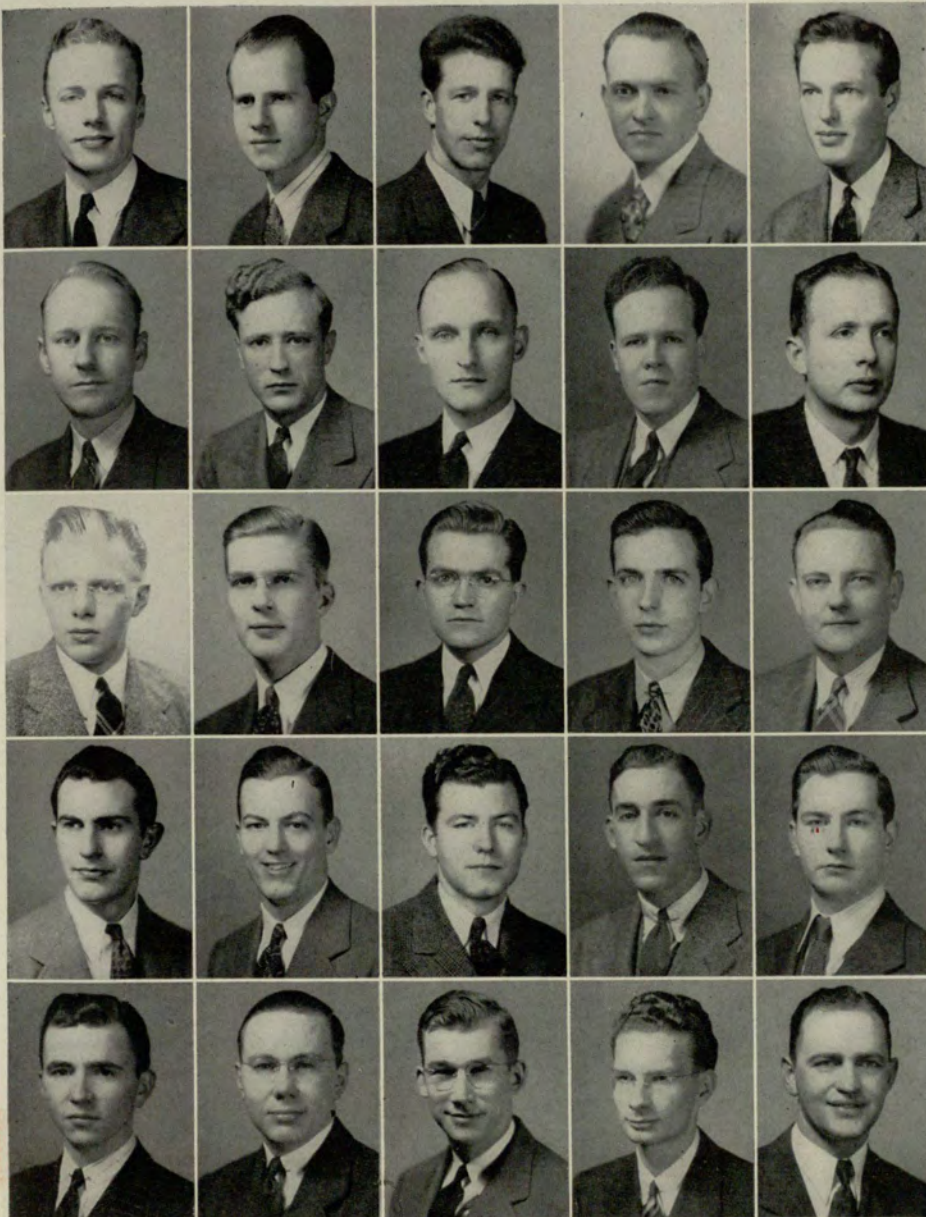


Top: Ernest Bolen - Warren Blackmon - Charles Bowling. *Below:* Homer T. Brewer - Hans Butzon - Harry Cantrell.



Pledges of Venetian Society are required to wear baby caps and provide members with adequate supply of buttermilk during school hours one week before their initiation into the society. At left are two groups of 1940-41 pledges, who wore funny head-pieces to classes and in the halls. *Below:* Big Chief Ernest Bolen, President, was snapped by the photographer while he (Bolen) was taking a moderate sun bath at one of the summer house parties.

Miss Jean Mozley, one of the society's sponsors, looks over the Venetian page, while Miss Betty Beavers (opposite page), other sponsor for the year, takes part in one of the society's traditions. Pajama-clad, she is receiving her invitation to the 1941 Buttermilk Ball from President Ernest Bolen.



Reading from left to right, beginning at top: Ed Clark - Curtis Cooper - Harold Duncan - Jimmie Edwards - Ernest Elsner - Harry Fenn - Sam Franklin - Hugo Franz - Francis Gregory - Harry Kent - Al Kuettnner - Tom Luck - Owen Malcolm - Jimmie McNabb - Lyle Milligan - Wallace Norris - Cecil Pool - O. C. Robbins - Britt Sanders - Carl Simpkins - B. E. Smith - Leo Stillman - Harold Tabor - Ben Tuck - McCoy White.

Other Members: Frank Carter - Bob Griffith - Tom Pierce.

Upsilon Chapter

INSTALLED APRIL 9, 1929
Founded Chicago, Illinois,
June 16, 1924

COLORS *Lavender and Gold*
FLOWER *Lavender Iris*
PUBLICATION *"The Iris"*



FIDELES KLOECKLER
President

OFFICERS

FIDELES KLOECKLER *President*
CLAIRE HAMMOND *Vice President*
LOUISE MARCHMAN .. *Recording Secretary*
EMMA BAIRD ... *Corresponding Secretary*
LENA RUTH LAWRENCE *Treasurer*

Here's a closeup and a far-away of "Upsiloj," country home of Phi Chi Theta. Serenades come natural in the beautiful setting of trees and the great out of doors.



Phi Chi Theta

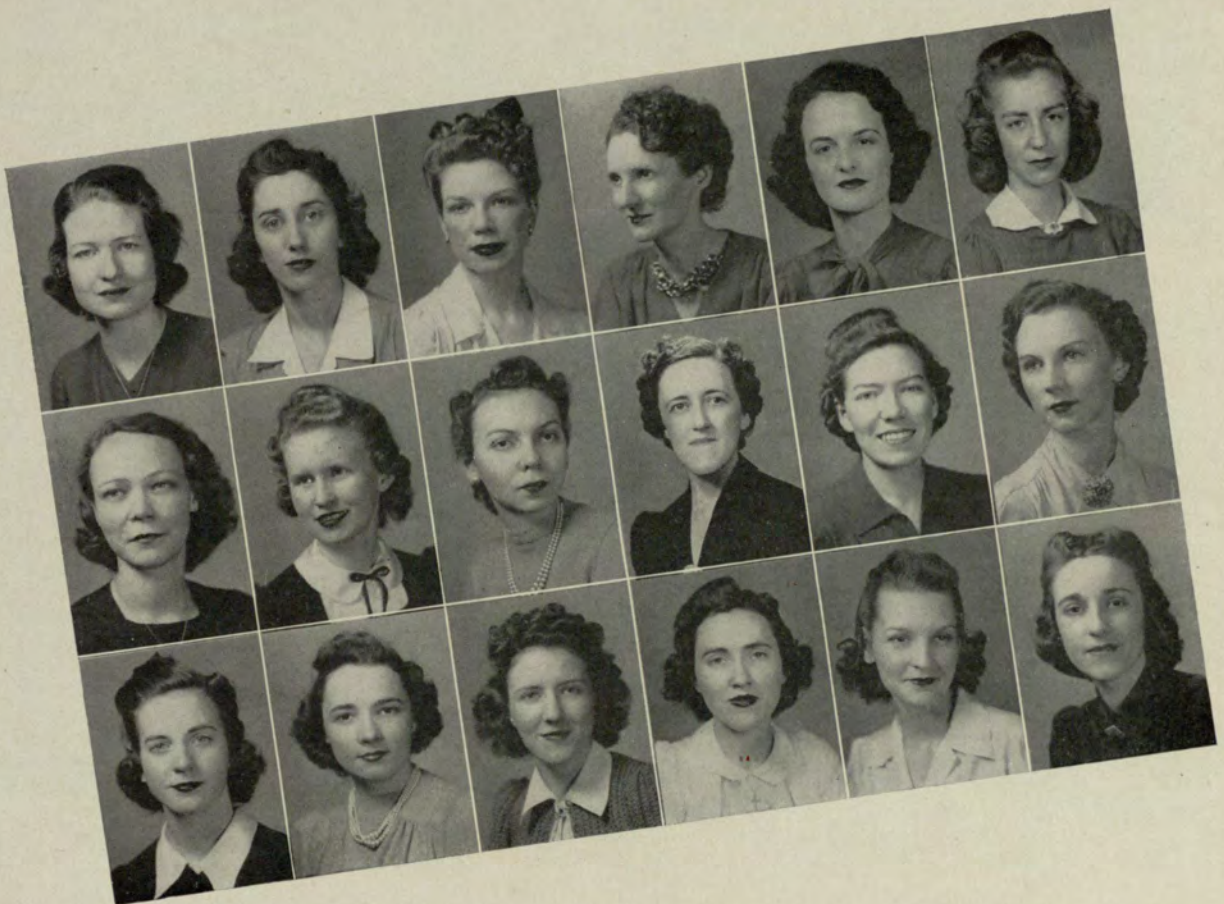
Upsilon Chapter stands in the forefront of this national sorority, carrying out the organization's purpose: to promote the cause of higher business education and training for all women, to foster high ideals for women in business careers, and to encourage fraternity and co-operation among women preparing for such careers.

In order by rows from left to right:

EMMA BAIRD
 PAULINE BERRY
 FLORENCE CAMP
 RUTH CHAPMAN
 LOIS DOZIER
 DOROTHY ESCOTT
 CLAIRE HAMMOND

RUTH ISAKSON
 WILLATHEA JACKSON
 INEZ KITCHENS
 LENA RUTH LAWRENCE
 LOUISE MARCHMAN
 MADGE MOORE
 GENEVIEVE MURRELLE

ELIZABETH RAMSDEN
 CAROLINE REID
 DOROTHY STRANGE
 MARY ELIZABETH SHELTON
Other Members:
 ANNE STICHA
 ANNE MURPHY





MARY CALLAWAY
President

OFFICERS

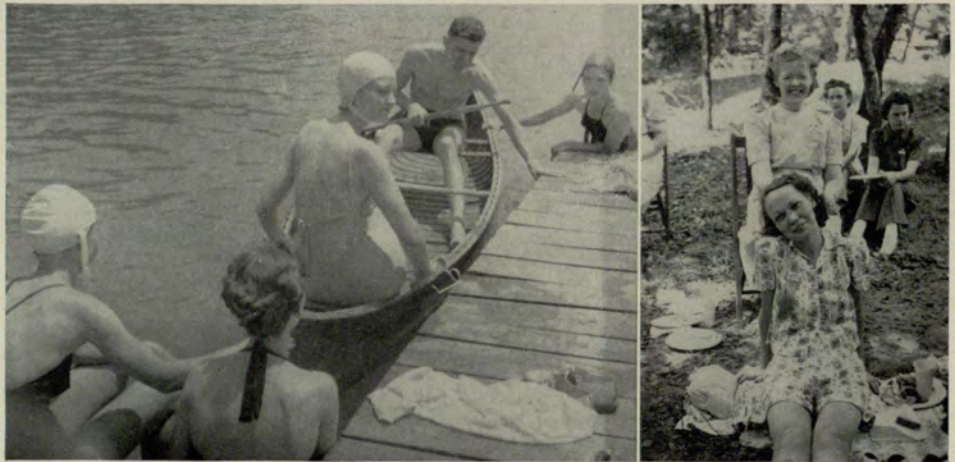
- MARY CALLAWAY *President*
LAURA CAMPBELL *Secretary*
DOT ESCOTT *Treasurer*
LILLIAN BLACK *Honorary Member*

The Hilarian Club

Founded At Georgia Evening College April, 1931

In this, the tenth birthday year of the Hilarian Club, the organization still adheres to its first principles: the blending of social and scholastic activities to the permanent benefit of each member.

Hilarian house parties are known throughout GEC for the pleasant memories they inspire, for the actual fun of being with a fine gang. Here are shots of last summer's.





From left to right: Betty Beavers - Laura Campbell - Florence Camp - Dorothy Escott - Frances Grier - Claire Hammond - Boots Hoage - Marion Kessler - Martha Kirven - Louise Marchman - Jean Millard - Vera Murray - Mary Shelton - Kay Tabor - Virginia Wise. Other members: Helen Davidson - Elizabeth Craig Crawford - Edna Cawthon - Mabel French.

The purpose of the Hilarian Club is to bring together those girls who are interested in social activities at the Evening College, as well as scholastic activities; to aid these girls in forming friendships that will continue to be a pleasure to them after their graduation, and most of all to enjoy school activities together; to have dances, parties, picnics, and get-togethers outside of school; to make our college days not only a memory of scholastic deeds well done, but of good times enjoyed in the company of congenial friends.



LOIS DOZIER
President

OFFICERS

| | |
|------------------------|--------------------------------|
| LOIS DOZIER | <i>President</i> |
| VIRGINIA POTTS | <i>Vice-President</i> |
| CAROLINE REID | <i>Recording Secretary</i> |
| MARJORIE DEAN | <i>Corresponding Secretary</i> |
| VERA MURRAY | <i>Treasurer</i> |
| VIRGINIA HEMRICK | <i>Assistant Treasurer</i> |
| VADIE FLEMING | <i>Sergeant-at-Arms</i> |

Iota Chapter of Delta Lambda Sigma Sorority was installed January 28, 1934, for the purpose of the development of the nobler qualities of the mind and the attainment of individual and social excellence among its members.



Delta Lambda Sigma



YDOINE BINFORD

ETHELYN CANTRELL

MARJORIE DEAN

VADIE FLEMING

VIRGINIA HEMRICK

JEANNE JOHNSON

LOUISE JOHNSON

CLAIRE MANNERS

MADGE MOORE

VERA MURRAY
GENEVIEVE MURRELLE
EVELYN PEAVY
CAROLYN REID

DOROTHY STRANGE
KAY TABOR
MARY SHELTON
CAROLYN TODD

Other members:
ELIZABETH ALLEN
HELEN DAVIDSON
ROSEMARY HUGHES
LUCY PITTMAN
MARY PITTMAN
VIRGINIA POTTS





JEAN MILLARD
President

BETTY BEAVERS

MELROSE BLACK

FLORENCE CAMP

GENEVIEVE DUKE

DOROTHY ESCOTT

FRANCES GRIER

RUTH ISAKSON

LOUISE MARCHMAN

OFFICERS

| | |
|-----------------|--------------------------------|
| JEAN MILLARD | <i>President</i> |
| BETTY BEAVERS | <i>First Vice-President</i> |
| DOROTHY ESCOTT | <i>Second Vice-President</i> |
| LOUISE MARCHMAN | <i>Recording Secretary</i> |
| MELROSE BLACK | <i>Corresponding Secretary</i> |
| THEONE NORRIS | <i>Treasurer</i> |



Kappa Theta



EVELYN MATHIS

MARY MAYES

SARA McDANIEL



NIXIE NORRIS

THEONE NORRIS

RUTH PITTARD



ELIZABETH RAMSDEN ERLENE WHEELER HARRIET WILLIAMS

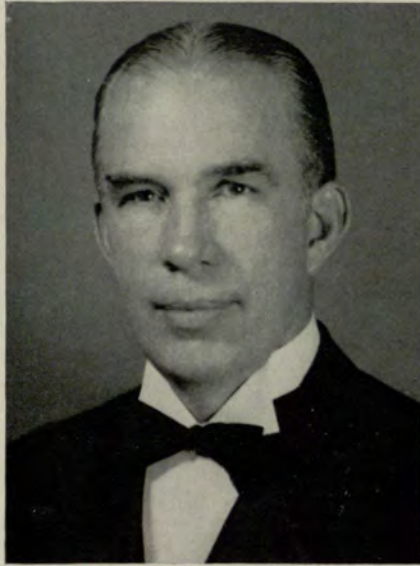
Other Member:
RUTH JACKSON

Founded at Georgia Evening College January 24, 1937, the purpose of this sorority is to aim as a sisterhood and as individuals to strengthen social ideals in their highest level, to secure the fullest in understanding and to enjoy the finest in fellowship.



Glee Club

MORRIS AMATO *President*
 JULIAN HEETH . *Vice-President*
 J. T. PITTMAN *Pianist*
 MACK ALSPAUGH . *Sec. & Treas.*
 JULIAN RAWLINS *Historian*



JOHN HOFFMAN
Director



MORRIS AMATO
President

Top row: Mack Alspaugh - Emory Bell - S. H. Benedict, Jr. - Victor Davis - R. W. Dickson - Hiram Honea. *Middle row:* Gene Howell - Wilbur J. Newberry - Robert Oliver - J. T. Pittman - Vernon C. Prickett - Julian Rawlins. *Bottom row:* Bill Rivers - Carl Sandiford - James Singleton - David Stallings - Bill Thomas - Gordon White. *Other members:* Julian Heeth - John Singleton.



True it is that honest effort brings its own reward, but it is no less true that each individual who took part in shaping the destinies of this year's Georgia Evening College Glee Club deserves the continuous plaudits of those who reaped the pleasure and benefit of the organization's great work. Every participant has worked faithfully and long, is due the praise of the entire student body.



Scenes from the Club's recent presentation of "The Vagabond King." Critics and audience for three nights hailed the annual operetta, given this year at Erlanger Theatre.



Speakers Club



IRA ABERNATHY
ED BECKHAM
GEORGE BECKHAM
WARREN BLACKMON
ERNEST BOLEN



BILL BOST
FRED BRANAN
HOMER BREWER
DEAN BROOME
WALTER BUCHANAN



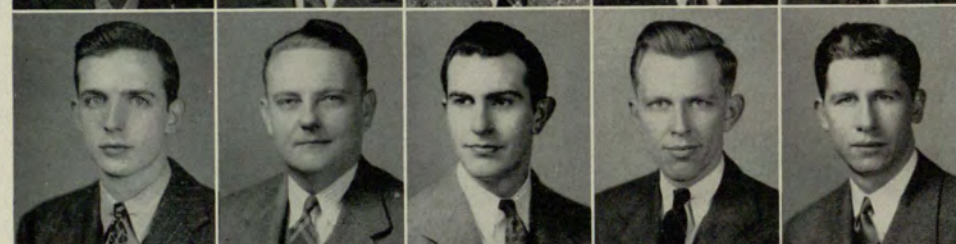
EDWIN CLARK
CHARLES DOBBINS
HAROLD DUNCAN
GEORGE EDWARDS
CHARLES ENGLISH



DAVID ENGLISH
HARRY FENN
ALDO GARONI
DR. R. R. HOLLINGSWORTH
CLYDE JACKSON



AL JONES
JOHN KLEIN
AL KUETNER
RAYMOND LONG
TOM LUCK



JIMMY McNABB
LYLE MILLIGAN
WALLACE NORRIS
RAYMOND O'KELLEY
JOE RHYNE



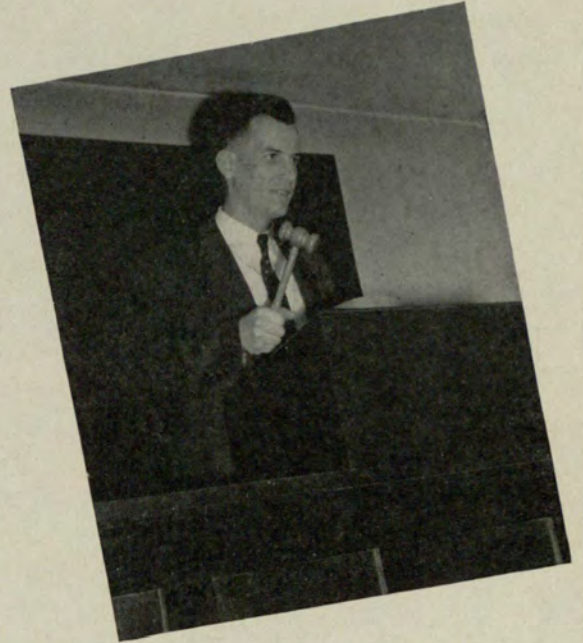
FORD RIVES
JIMMY WELCH
BOB WILLIAMS
FRED WINDHAM
ED WITHORN

The Speakers' Club in a world of strife, confusion and discouragement, assumes an even more significant role than ever before in GEC affairs. Through conscientious and thought-provoking discussions of controversial subjects, through encouraging the ability to think and speak in a convincing manner among its members, the Speakers' Club is making the most of America's great heritage—Free Speech.

OFFICERS

FORD RIVES *President*
 WALTER BUCHANAN *Vice-President*
 BILL RAMSDEN *Secretary*
 FRED BRANAN *Treasurer*
 LUTHER BURROUGHS *Historian*
 JAMES DAVIS *Alumni Advisor*
 DR. R. R. HOLLINGSWORTH *Faculty Advisor*

Ford Rives, President, raises gavel for order. Parliamentary law is carefully followed at all meetings.



A group in serious discussion of a weighty problem of the day. The club through forum, debate and address delves deep into local, state, national and world affairs, seeks a clearer understanding of man and his actions.

OTHER MEMBERS OF SPEAKERS CLUB

Reinaldo Abreu - I. J. Bailey - Marvin Byrd - Bob Dalton - L. C. Duncan - Robert Ferrell - James Freeman - Bob Griffith - Julius Oelsner - Carl Osteen - Bill Womble - Macon Worthen - Grady

Banks - Archer Baird - Charles Bowling - Bill DeLoach - Jim Dillard - Hiram Honea - Hugh Howell, Jr. - Wallace Norris - Britt Sanders - Bill Shrader - James Yeomans.



The Spur Club

On brisk Autumn afternoons, on balmy Spring mornings, and on full moonlight nights in between, members of GEC Spur Club can be found—you guessed it. Horseback riding. Here are members hanging and otherwise to the rail, waiting for their time in the saddle. Pines in background wave over smooth trails which have afforded riders many hours of keen pleasure.

Their clubroom is the great out-of-doors; their keenest desire is to swing into the saddle on a Saturday afternoon or a moonlight night; the sweetest music to their ears is the click of a horse's hoof on gravel, the squeak of saddle leather. With a powerful horse beneath them and the wind in their ears, members of the Spur Club are a contented lot.



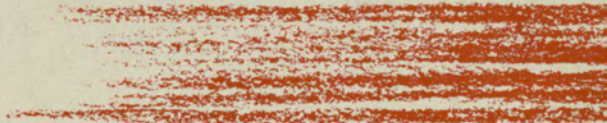
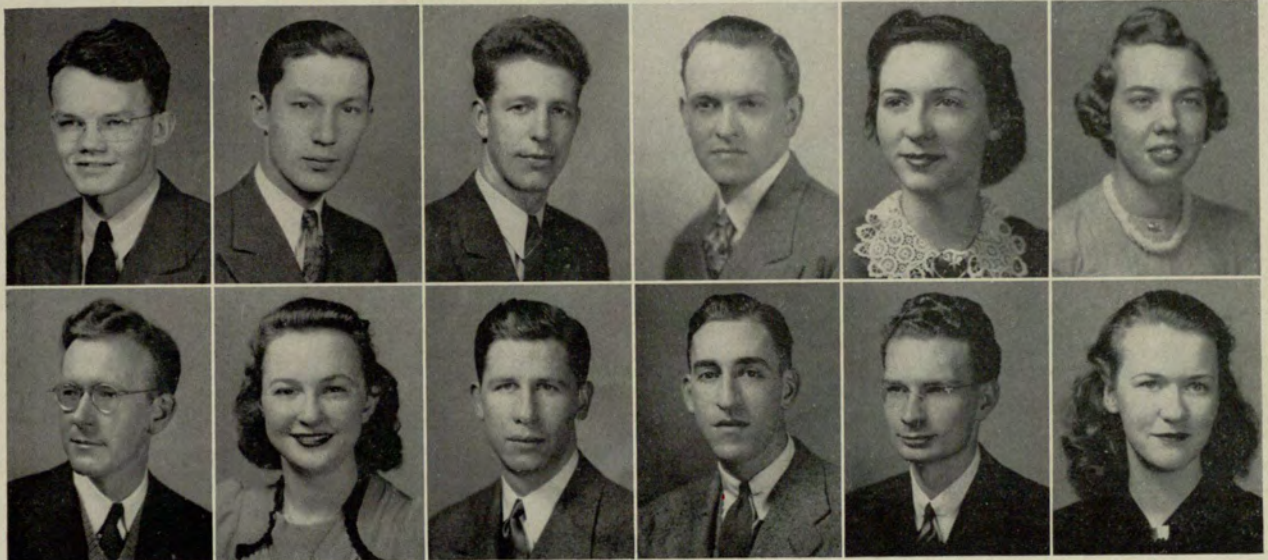
From left across: Upchurch, Ramsden, Baird, Edwards. These four, with Harold Duncan, direct club's activities.



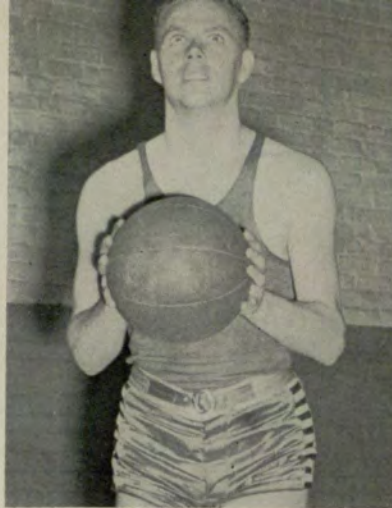
OFFICERS

ELIZABETH RAMSDEN *President*
 JIMMIE EDWARDS *Vice-President*
 INDIA UPCHURCH *Secretary*
 ARCHER BAIRD, HAROLD DUNCAN... *Treasurers*

From left to right, top: Archer Baird, Harry Cantrell, Harold Duncan, Jimmie Edwards, Vadie Fleming, Virginia Hemrick; bottom: Al Jones, Ruth Pittard, Joe Rhyne, Britt Sanders, Ben Tuck, India Upchurch. Other members: Verona Killingsworth, Bob Holder, Harriet Green, Hugh Howell.



Basketball



COACH MILLARD POSEY
PLUS ACTION



Coach Millard Posey's scarlet-clad basket-
eers of 1940-41 captured 16 victories against
9 losses.

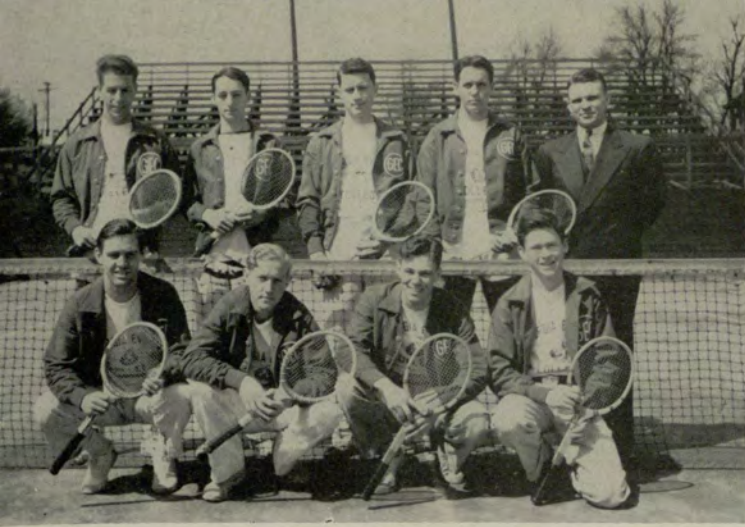
Outstanding players for the Owls were
diminutive Paul Hickman, who was elected
Captain at the Banquet given for the players
at the end of the season; Jack Teagle, lanky
center and high scorer; J. H. Carswell, sturdy
defensive face, and Posey, whose consistently
fine play stood out.

Complete roster follows: Jack Teagle, Paul
Hickman, J. H. Carswell, Millard Posey, Vic-
tor Leaf, Jim Dillard, Bion Enlow, Pugh
Smith, Billy Hatcher, Grice, Grist and Wal-
lace Norris. Renaldo Abrew served efficient-
ly as manager.



Upper: The Scarlet-Clads
on Sideline

Lower: Coach Bill Layton
poses with girls' team



Left: GEC netmen — champions all. Below: Donald Floyd and Florence Camp, captors of the 1941 Spring Tennis Tournament.

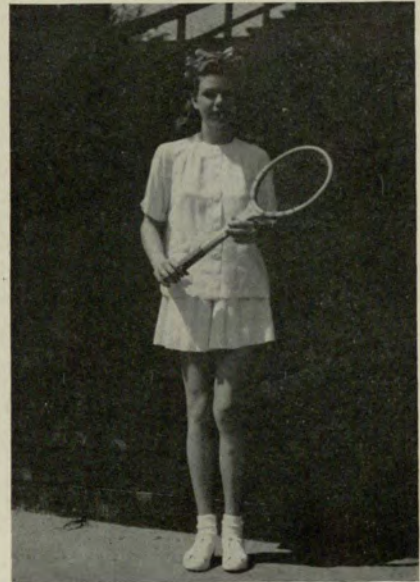
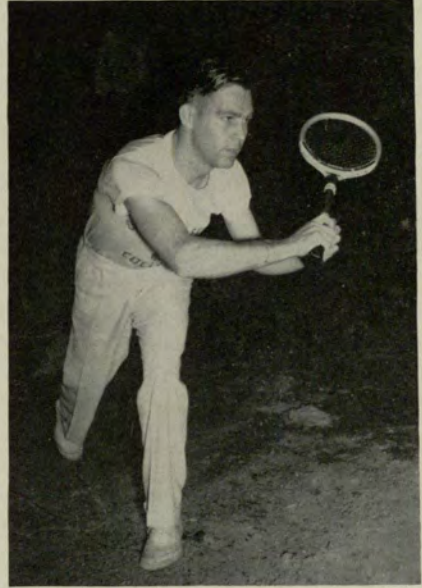
Tennis

An impressive 6-1 victory over the Davidson netmen gave the GEC racqueteters a typical beginning for the 1941 season. Coach Donald Floyd's Owls have not been defeated since Emory Junior College upset them in 1939.

In order of their ranking, the champion 1940 tennis stars were Donald Floyd, Malcolm Manley, Jack Bledsoe, Spencer Thompson, Pugh Smith and Sid Underwood. These players swept through an impressive schedule, including Alabama, South Carolina, Clemson, Mercer, Emory, Birmingham-Southern, Emory Junior College, Southern Dental College and West Georgia College.

Opening the current season against Davidson, GEC lined up Donald Floyd, Marvin Nicholson, Billy Miner, Pugh Smith and Harold Duncan. Other 1941 players are Richard O'Callaghan, Sid Underwood, Reid Brown and Clack Tucker, both of whom should see plenty of service.

Furman, Citadel and Mercer are among the strong list of opponents lined up for the 1941 season. Georgia Evening College has just reason to be proud of her impenetrable tennis titans.





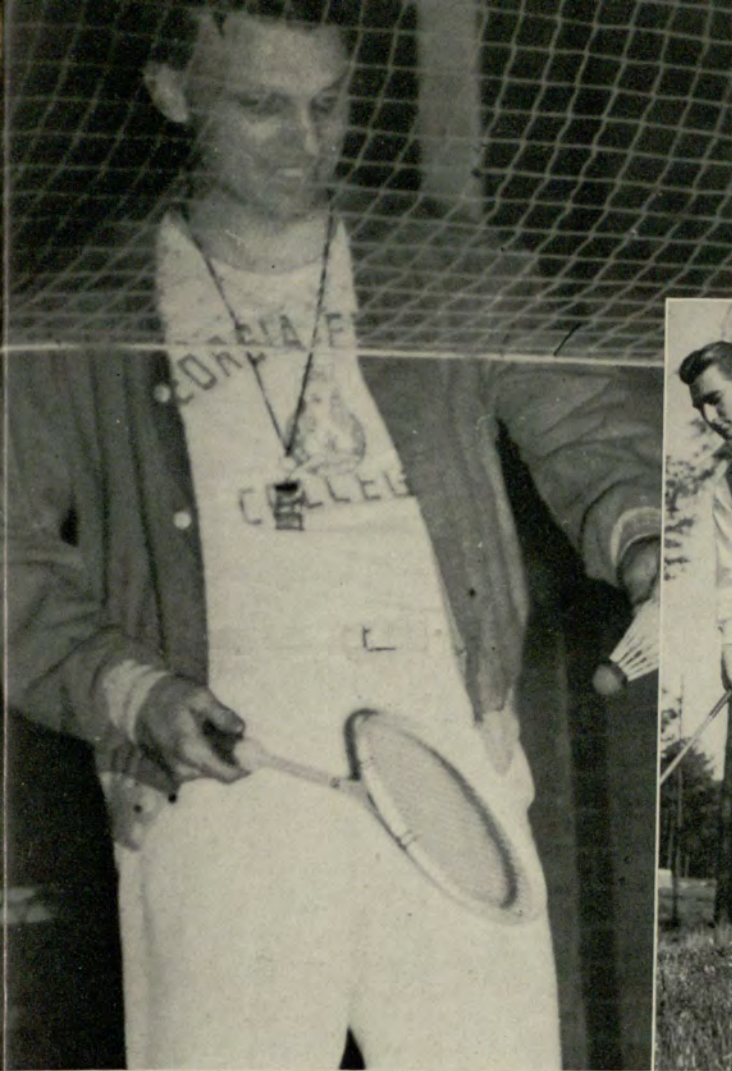
Bowling

Atlanta bowling alleys resounded this year to the spares and strikes of GEC bowlers. Here they are lined up for the play during a recent tournament. The sport has caught on in Evening College, has risen to high ranks of interest and experience.

Cook (on top) and Cooper stretch arms, legs and muscles in mat practice. *Below:* The team at ease. Cooper's shiner (first row left) took much explaining at out-of-school social affairs.



Wrestling

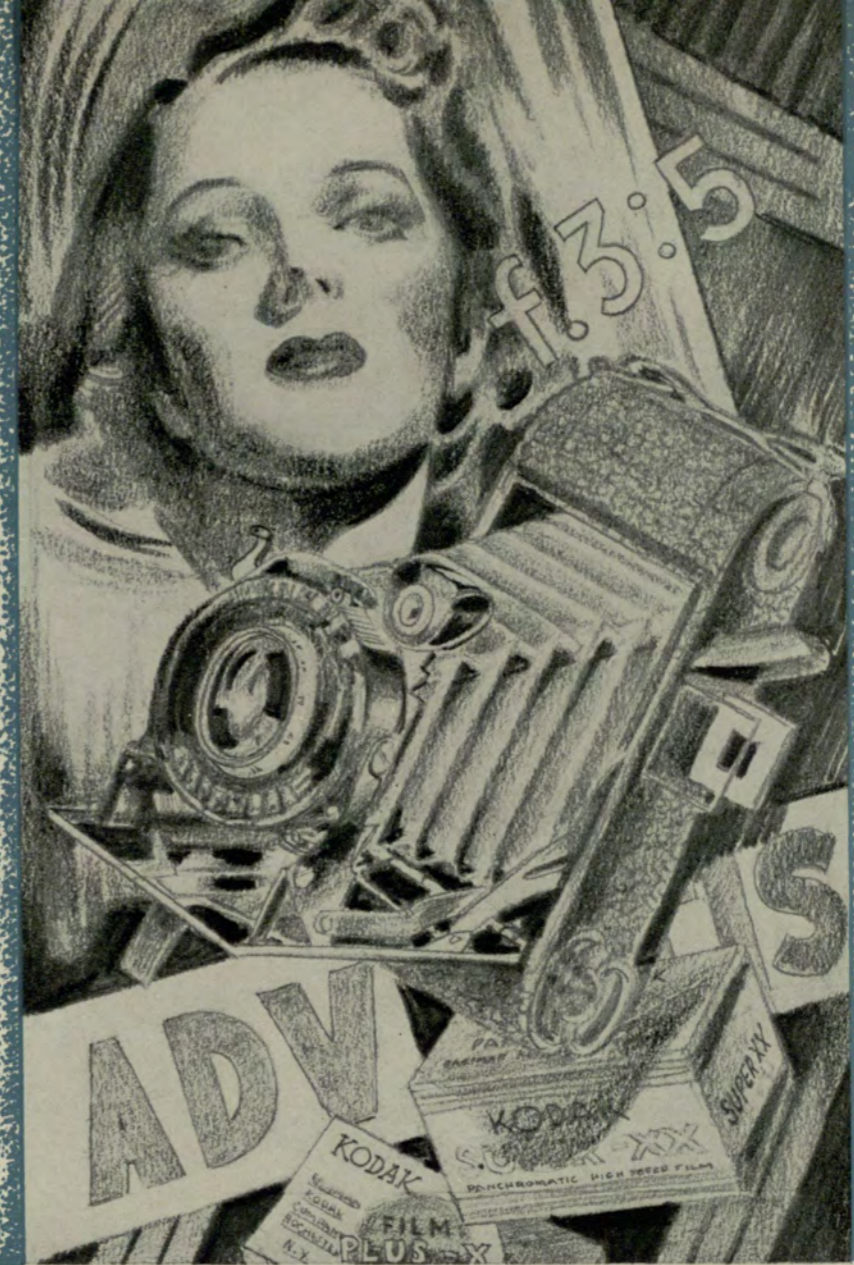


Recreation's the Thing . . .

With a full-time coaching staff, required physical education and a well-equipped gymnasium for either muscle building or just plain fun, it is no wonder GEC is breeding championship teams in many fields. The program of late has overflowed into the school's country home, Indian Creek Lodge, where interest is bounding . . . Coach Layton here demonstrates a badminton shot, all smiles, whistle and jersey . . . Arnold Anderson, up-and-coming golfer tees off on a local course in a practice game. This lad was plenty hot this Spring . . . top right is gym scene. The back is Bumstead's, class instructor and genuine sport . . . "Shimmy" machine and Indian Creek Lodge swimming pool complete series.

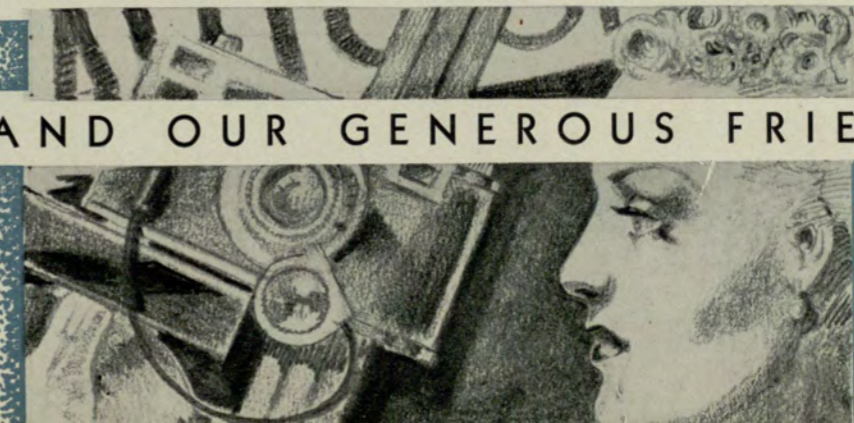


Click . . . Hold that pose . . .
Beauties . . . Who won the
popularity contest? . . . Boy,
what a Babe . . . Advertisers
. . . Beauty . . . How 'bout a
date . . . Hold it for another
shot . . . She's got everything
. . . Homecoming Banquet . . .
What a crowd . . . Ads . . . Ads
. . . Layouts . . . And so to
press.



T H E F E A T U R E S

CROSS SECTION OF BEAUTY, PERSONALITY AND OUR GENEROUS FRIENDS



★ *Mary Jane Parham*

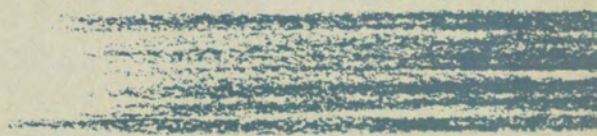


B E A U T I E S

Betty Beavers



Frances Grier





Marian Rogers



• • • *Matilda Ivy*

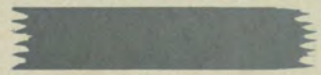


Louise Johnson

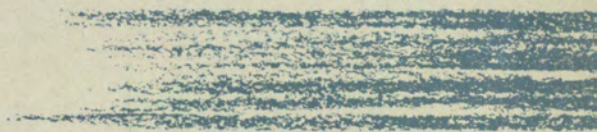


Louise Rogers

Mary Louise Mayes



Jean Millard





Sara McDaniel



Evelyn Mathis



Kitty Cox

Popularity Choices

Sponsored by Juniors, these are student body choices for Superlatives. *Reading from top down:* Tom Luck and Lois Dozier, Mr. and Miss Evening College; Frances Grier, most beautiful girl; Wallace Norris, most eligible bachelor; Lois Dozier, best secretary; Joe Rhyne, most likely to succeed; counting the ballots.



Buttermilk Ball

They came in every conceivable costume to the Venetian Buttermilk Ball in April. Party-goer at top didn't dance in this rig, nor did group in center of page pull out their lunch buckets in middle of dance floor until intermission. Below is crowd jammed at band stand as judges selected best costumes.



She said 'Open Good Bye' to 'With you'



Homecoming Banquet

Here are class presidents and dates, as they were in November when Homecoming Banquet was held. *From top:* Britt Sanders accepts light from date June Cash; Jim Freeman and Virginia McWhorter, now Mr. and Mrs., study program; Frank DiChristina, now in army, takes dollar tip from Sara McDaniel; Charlie Cotton, who left soon afterward for New York on business, is fed by Elsie Smith.





RCA Victor Radios

Goodrich Tires, Batteries, and over 2,000 items for the automobile and home
Bicycles, Toys, Sporting Goods, Oils, Seat Covers, Horns, etc.

ECONOMY AUTO STORES

Three Atlanta Stores

WHITEHALL STREET AT MITCHELL

741 MARIETTA STREET (Near Ponders Ave.)

811 GORDON STREET (West End)

Partners Forever . . . Holzman's and Ga. Evening School

May is "Anniversary Month" at Holzman's . . . 44 years of service to Atlanta and the South. We've many special items in stock for this event.

"Our" Christine Wing, Georgia Evening School honor graduate will be so happy to help you with your gift problems!

HOLZMAN'S

29 Broad St., S. W. ATLANTA

COMPLIMENTS

OF

J.P. ALLEN & CO.
Atlanta

BILL CLARK
and
ORCHESTRA

VE. 2672

JAMES E. GOODSON
Representing
GORDY TIRE CO.
Distributors
DAYTON - McCLAREN
TIRES
PEACHTREE & TWELFTH STREETS
VE. 3531
ATLANTA, GA.

Compliments of
**John Martin Service
Station**

WASHING



GREASING

Piedmont Road at Wesley Ave.
Cherokee 9780

Compliments of
JAMES G. WILCOX

GENERAL INSURANCE

313 Ten Pryor St. Bldg.

Walnut 4410

Compliments of

ROSE MARRE

FLORIST

PROMPT DELIVERY

Vernon 9371

OPENING EVENINGS

561 Peachtree Street, N. E.

ENJOY A DELICIOUS
LUNCHEON AT . . .

**ELLEN RICE
TEA ROOM**

63½ Poplar St. at Forsyth

JA. 4181

We Are Glad to Serve Evening
Parties, Dinners, Etc.

University System of Georgia

University System of Georgia Center, in Atlanta

EVENING COLLEGE

and

JUNIOR COLLEGE DAY CLASSES

CO-EDUCATIONAL

Day and evening classes are given to meet the needs of students as follows:

1. Those who wish to take work for University credit toward the degrees of Bachelor of Arts, Bachelor of Science in Commerce, Bachelor of Arts in Education, and Bachelor of Science in Education.
2. Students who wish to receive the degree of Bachelor of Commercial Science, through the Evening College, for work done entirely in the University Center in Atlanta.
3. Students who wish to complete work for a Junior College Diploma of graduation from the University System of Georgia in the fields of Bachelor of Arts, Bachelor of Science, Bachelor of Arts in Education, Bachelor of Science in Commerce, and Bachelor of Science in Education.
4. Students who wish to complete work for a Certificate in Business Administration or for a Certificate in Secretarial Training.
5. Special students taking selected courses and not having in view an extensive program of study.

Earn While You Learn..Learn While You Earn



GOLD SHIELD

Launderers and Cleaners

TRIO
AMERICAN
PIEDMONT

CAPITAL CITY
DECATUR
MAY'S

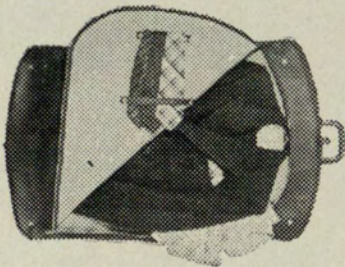
TROY
GUTHMAN
EXCELSIOR

ATLANTA, GEORGIA

GOING AWAY?

Then carry your extra suits in a

FULCO TRAV-L-BAG



Ideal for automobile travel. Plenty of room for three suits and assorted haberdashery. Easy to handle and carry. Economically priced from \$5.50 to \$7.50. See it at your favorite dealer.

Fulton Bag & Cotton Mills
ATLANTA

BELLE ISLE GARAGE

"AMERICA'S FINEST"



PEACHTREE AT LOEW'S



PARKING

PARKING

25c

ALL DAY

25c

ANSLEY HOTEL

Just around the corner from the Evening College. Ideally located for Fraternity, Sorority and other organization banquets dinners, etc.

L. S. TUCKER,
Manager.

**HIGH GRADE USED CARS
ALL MAKES AND MODELS**

AT
WHOLESALE PRICES

•
**Atlanta's Largest
Convertible Dealer**

•
Piedmont Motors, Inc.

285 Spring St., N.W.—at Baker St.

WA. 8998

Cash for Used Cars

Lincoln Discount Corporation

Automobile Financing

Time Sales -- Loans

Refinancing Low Rates

452 Peachtree St., N. E.

Main 8711

Compliments of

Frost-Cotton Motors,
INCORPORATED

SERVICE



SALES

452 Peachtree St., N. E.

WAlnut 9070

TWELVE OAKS

1879 Piedmont Road

Famous for
Southern Fried Chicken

UNIVERSITY GRILL

Across Street from School

BAKED HAM 10c
CHOPPED STEAK 10c
CHEESEBURGERS 10c

On Toasted Buns

HAMBURGERS and HOT DOGS

5c

Courteous Service at All Times

"Fashion Park Clothiers"

DEFOOR, INC.

121 Peachtree Street

CLOTHING
FURNISHINGS - SHOES

J. P. STEVENS ENGRAVING COMPANY

Wedding, Reception and
Visiting Cards

Personal Stationery

110 Peachtree St. Atlanta, Ga.

D. B. THORNTON COMPANY

BUILDING MATERIALS

THORNTON CONCRETE

CONCRETE READY-
MIXED MORTAR

THORNTON CONCRETE

Mixing Plants: WA. 7989

Office & Warehouse: WA. 6460

*All portraits in this book
made by*

GASPAR-WARE STUDIOS

30-32 FIFTH STREET, N. W.

Atlanta, Ga.

Official Photographers for

THE NOCTURNE

All Nocturne negatives are held in our files for several years and personal photographs can be obtained at any time.

Write us for information and special price list.

**EARL G. DOWDA
OPTICAL CO.**

OPTOMETRISTS

OPTICIANS

132½ Whitehall St., S. W.

Main 1010

ATLANTA

Make BRYANT Headquarters For
Your Entire Office Needs

Complete Line of
Office Supplies - Printing
Looseleaf Systems
Steel Filing Equipment
Posture Chairs

Exclusive Factory Distributor for
Old Town High Grade Ribbon
and Carbon Papers

**Bryant Lithographing
Company**

MA. 2800 136½ Marietta St.
ATLANTA, GA.

Evening College Students

recommend

Original Waffle Shop

"MEET THE GANG"

After Dances, Shows, and Even Get
a Delicious Steak After Studying

Excellent Food Reasonable Prices

62 PRYOR STREET

Johnny Chotas, *Manager*

B O W L

The Right Way at

BLICK'S

(3 Convenient Centers of Activity)

LUCKY STRIKE

28 Alleys 671 Peachtree St.

BOWLING PALACE

12 Alleys Briarcliff Plaza

BOWLING CENTER

52 Alleys 20 Houston St.

(Largest One-Floor Bowling Center
in the World)

100 N. D. P. B. C. Sanctioned
Alleys

Engravings by

Photo-Process
Engraving Company

ATLANTA

Success . . .

is an important factor in the life of every student, regardless of the field of occupation he may choose to enter.

We made our choice . . . *The Printing Industry* . . . Many years of concentrated efforts to succeed have accounted for our modern equipped plant with capable workmen to fulfill the requirements necessary for annual production.

Complete service coupled with the experience and cooperation of competent, expertly trained men is the formula for successful annuals.



The Stein Printing Company

161 LUCKIE STREET, N. W.

ATLANTA, GA.

WE wish to take this opportunity to thank our friends and patrons—the Advertisers—for their cooperation and loyalty to the Georgia Evening College. Their friendship and generosity is shown on these pages of advertising.

A student body, with a buying power of approximately \$50,000.00 a month, will show its appreciation to you through their business with you each day of the year. May your thoughtfulness build business and prosperity for you in the days and years to come.

The Nocturne Staff.

Autographs

RESERVE
LIBRARY OF CONGRESS

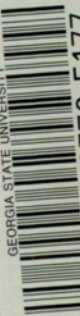
DATE DUE

XXXXXX
XXXXXX
XXXXXX

BRODART

Cat. No. 23-221

GEORGIA STATE UNIVERSITY



3 0785 00576 5177

