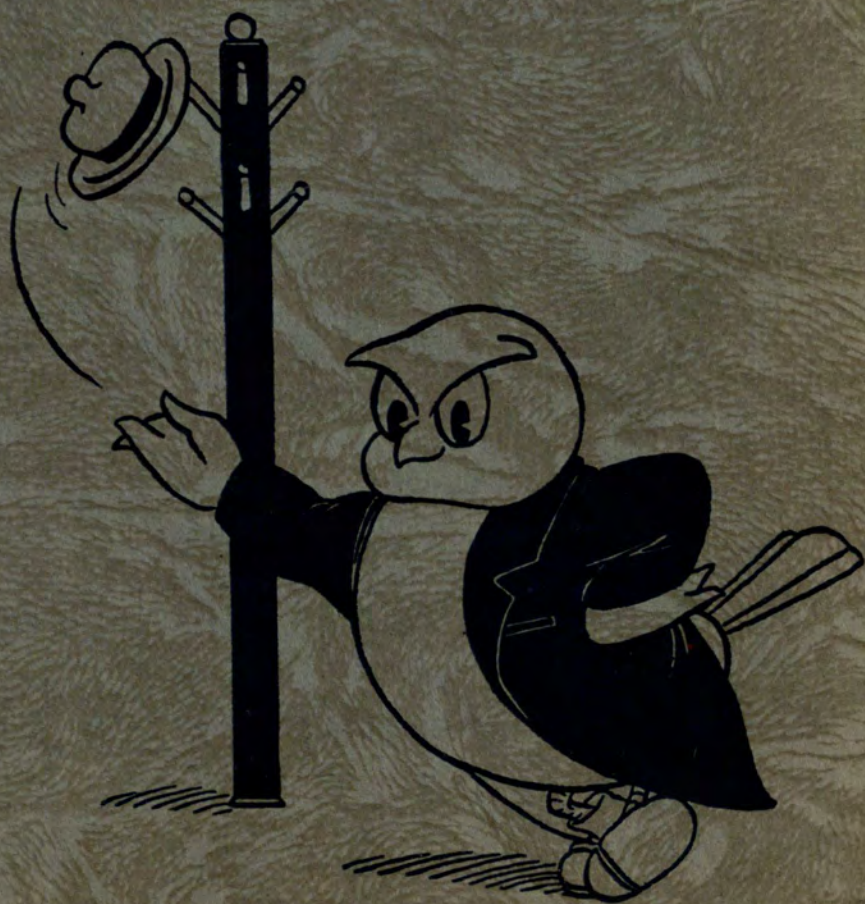


*The*

70-

# NOCTURNE

1942 - 44.



The  
*Nocturne*

1942

GEORGIA EVENING COLLEGE



... annual inventory ...

12378.73  
Nocturne  
1942

# Theme

In time of war, we know of no better way to keep up morale than to go on about our work as usual. This 1942 Annual follows business lines and uses business terms, which are what the GEORGIA EVENING COLLEGE students probably understand better than anything else.



## Contents

board of directors	—ADMINISTRATION
bonds of friendship	—CLASSES
partnerships	—ACTIVITIES
preferred stock	—FEATURES

*LD 1961*  
*G85 N6*  
*1942-44*

# Graduation Exercises

SUNDAY MORNING, MAY 24, 1942

DRUID HILLS BAPTIST CHURCH—11:00 A.M.

Baccalaureate Sermon.....*Dr. Louie D. Newton*  
 Processional..... *Played by Mrs. John Felder*

\* \* \* \*

MONDAY EVENING, MAY 25, 1942

ATLANTA WOMAN'S CLUB AUDITORIUM—8:30 O'CLOCK

Dr. George M. Sparks, Director, Presiding

Academic Procession  
 Processional..... *Played by James T. Pittman*  
 Invocation.....*Dr. Elmer G. Campbell*

MUSIC BY GLEE CLUB

Excerpts from "THE DESERT SONG," by Sigmund Romberg

*Directed by John D. Hoffman*

- |                                 |                                |
|---------------------------------|--------------------------------|
| "The Riff Song"                 | a. "Let Love Go"               |
|                                 | b. "One Flower in Your Garden" |
| "French Military Marching Song" | c. "One Alone"                 |

Literary Address.....*Dr. R. C. S. Young*  
 Conferring of Degrees.....*Dr. George M. Sparks*  
 Awarding of Diplomas  
 Announcements

\* \* \* \*

USHERS

Members of Delta Kappa Fraternity

\* \* \* \*

First Term of Summer Session Begins June 5  
 Second Term of Summer Session Begins July 10

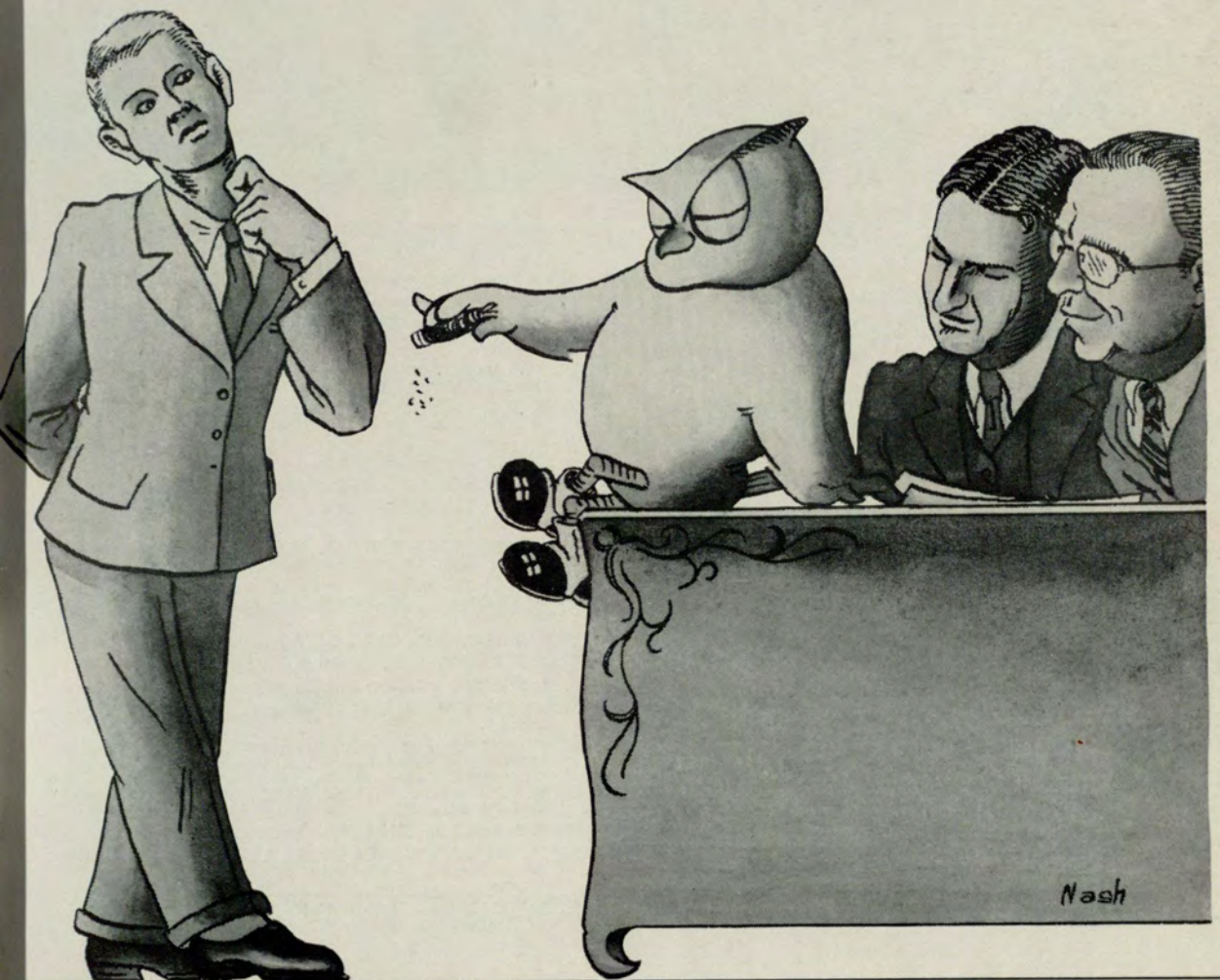


Stock in the Spotlight  
and Faculty Averages



LD 191  
G85 N6  
1942-44

# ADMINISTRATION



. . . . board of directors . . . .



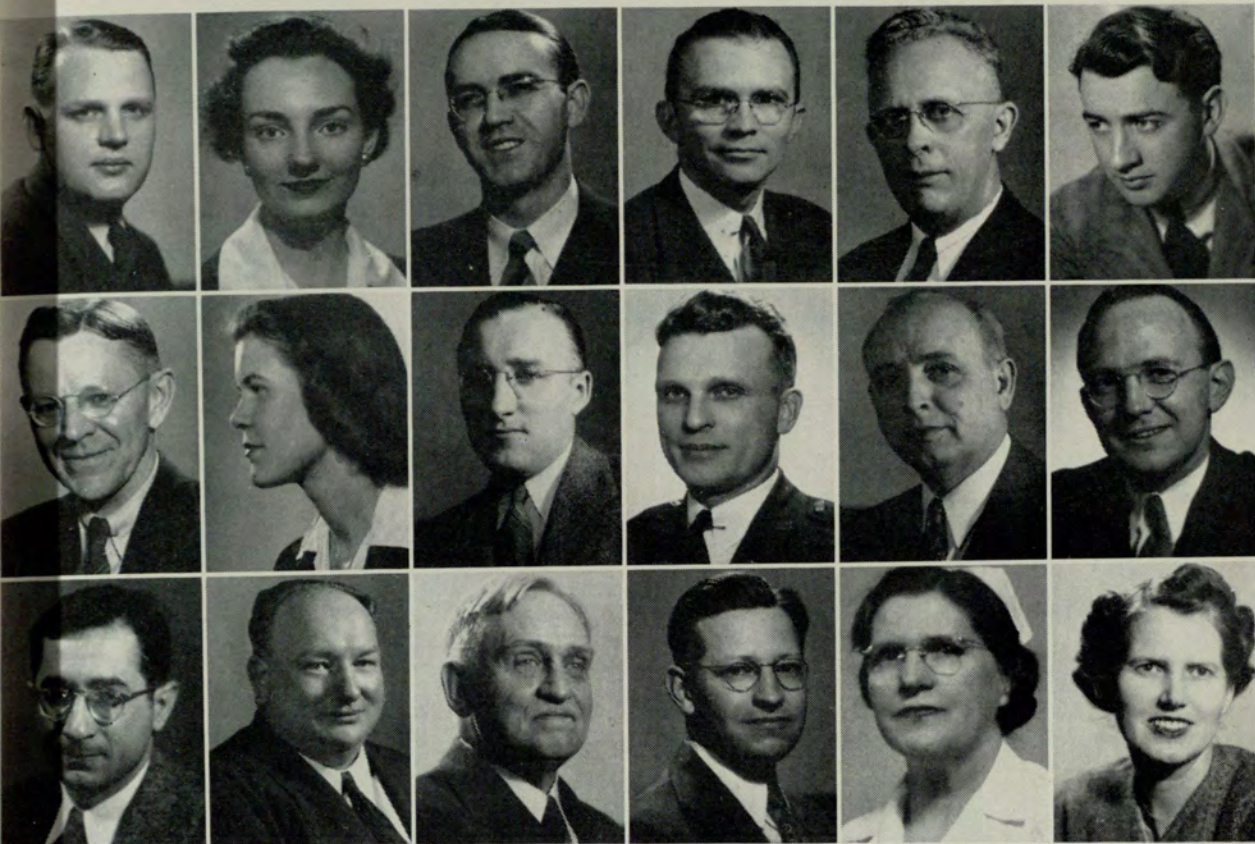
GEORGE M. SPARKS  
Director



THEODORE M. McCLELLAN  
Registrar

## FACULTY ROLL

- F. W. AJAX, A.B., M.A., Emory University, University of Chicago.
- L. T. BATES, A.B., M.A., Emory University.
- MISS MINNA BECK, B.S., Fine Arts, Columbia University; M.A., Fine Arts, Columbia University.
- R. C. BREWER, A.B., University of Kentucky, University of Wisconsin.
- MISS EUGENIA BRIDGES, A.B., Agnes Scott College.
- J. C. BROWN, B.S.E.E., B.C.S., Georgia School of Technology, Georgia Evening College.
- PROF. H. O. BURGESS, B.S., Alabama Polytechnic Institute; A.M., Emory University; Ph.D., George Peabody College for Teachers.
- E. G. CAMPBELL, A.B., M.S., Ph.D., Hiram College of Ohio, Perdue University, University of Chicago.
- W. C. CANTRELL, A.B., M.A., LL.B., University of Wyoming, Atlanta Law School.
- R. A. CHRISTOPHER, B.S.C., University of Georgia.
- D. B. COMER, A.B., M.A., Tulane University.
- B. O. COSBY, B.S., M.S., Emory University; Graduate Study, University of North Carolina and Johns Hopkins University.
- H. E. DENNISON, A.B., University of Tennessee; Graduate Work, University of South Carolina.
- E. H. EMORY, A.B., B.S., Mercer University, Georgia School of Technology.
- E. L. FLOYD, A.B., M.A., LL.B., University of Georgia.
- E. H. FOLK, JR., A.B., M.A., University of South Carolina, Princeton University.
- J. A. GRIFFIN, A.B., M.A., Emory University; Graduate Work, University of Wisconsin.
- R. A. HEFNER, B.S., S.M., Ph.D., Roanoke College, University of Chicago.
- J. D. HOFFMAN, Music Director, Atlanta Conservatory of Music, Musical College of Chicago; Franc Prochovski, New York; Robert Clark, St. Louis; Willford Watters, Atlanta; William Claire Hall, Chicago.
- L. R. HOGAN, A.B., M.A., LL.D., Mercer University, University of Chicago, Columbia University.
- R. R. HOLLINGSWORTH, A.B., M.A., Ph.D., Emory University, University of Chicago.
- MRS. J. B. HOSMER, A.B., Fine Arts Certificate, Washington University, St. Louis School of Fine Arts.
- HAL HULSEY, A.B., M.A., University of Georgia; Graduate Work, University of Georgia, Emory University.
- H. R. HUNTER, A.B., M.A., Ph.D., Duke University, Columbia University, Emory University, George Peabody College.
- MISS PICKETT HYNES, B.C.S., University System of Georgia Evening College.
- V. V. LAVROFF, Junior College, Harbin, China; B.S.C., M.A., Georgia School of Technology, Emory University.
- W. P. LAYTON, Director of Physical Education, B.Ph., Emory University.
- J. N. LECONTE, A.B., M.S., Ph.D., Emory University, University of North Carolina.
- B. E. LINDSEY, A.B., M.S.C., University of Kentucky, University of Georgia.
- W. F. LOZIER, A.B., LL.B., Columbia University.
- GEORGE MANNERS, B.S.C., C.P.A., University of Georgia.
- T. M. McCLELLAN, B.S.C., M.S.C., Georgia School of Technology; Graduate Work, New York University.
- CARL MAUELSHAGAN, A.B., M.A., Ph.D., University of Tennessee, University of Chicago, University of Minnesota.
- J. E. MAYO, A.B., M.A., C.P.A., Mercer University.
- WADE PERRY, A.B., Clemson College.
- J. E. ROUTH, A.B., Ph.D., Johns Hopkins University.
- WILLIAM SMITH, B.C.S., Georgia School of Technology.
- H. O. SMITH, A.B., M.A., Harvard University, Emory University; Graduate Work, University of Georgia Evening College.
- G. M. SPARKS, A.B., M.A., LL.D., Mercer University, Oxford, England.
- MRS. LINNIE B. TALLANT, Registered Nurse.
- NELL HAMILTON TROTTER, A.B., M.A., University of Arkansas, University of Wisconsin, Dean of Women.
- NOAH WARREN, B.S.C., M.A., C.P.A., Georgia School of Technology, Emory University.



R. C. Brewer  
Hal Hulsey  
George Manners

Miss Eugenia Bridges  
Miss Pickett Hynes  
J. E. Mayo

J. C. Brown  
V. V. Lavroff  
J. E. Routh

R. A. Christopher  
W. P. Layton  
W. S. Smith

E. L. Floyd  
B. E. Lindsey  
Mrs. Linnie B. Tallant

John A. Griffin  
W. F. Lozier  
Mrs. Nell H. Trotter

Brother Bates selling tickets for "The Desert Song"—Bridges directing the bubble bath in "The Women"—Tallant mopping the very sore throat—Young having us digging holes through to China—we are grateful to the G. E. C. Faculty for being more than just teachers.



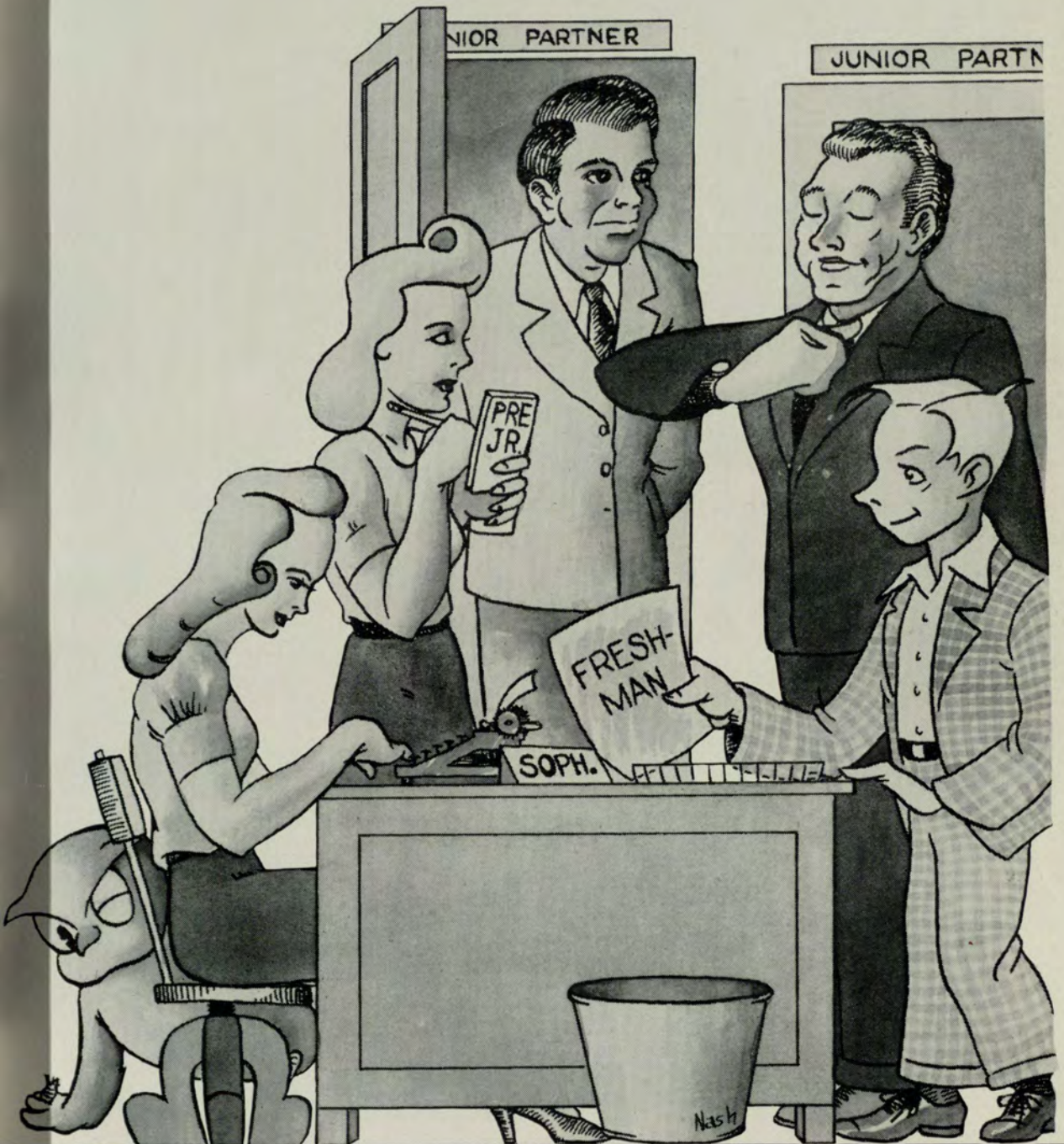


*Scenes shown here bring back to us—*

The Speakers' Club stag parties, seeing Garoni off, the courtyard, Nocturne dances, Crimson Key suppers, Delta Lambda Sigma house party, Venetian house party, A. T. & T. Club at Indian Creek, Henry and Rebecca in hall, posing for officers' picture, Charles and David (or David and Charles), Curtis home on leave, Lena in the refectory, the Alpha Kappa Psi-Delta Sig football game . . .snaps of a good year.



# CLASSES



. . . bonds of friendship . . .



OFFICERS

- ED CLARK ..... *Preside*
- LOIS DOZIER ..... *Vice-Preside*
- ELIZABETH RAMSDEN ..... *Secretar*
- JACK BALL ..... *Treasur*

The Secretary, who had to work the night the above picture was taken.



It was a short summer.

Ladder of Success. See who's highest!



Senior Class

REINALDO ABREU  
*Georgia Power Co.*

Entered from Georgia Tech. Speakers' Club '38-'42, Treasurer Speakers' Club '42, Manager Basketball Team '37-'42, President Pan-American Student Forum '41-'42, President Spanish-American Club '39.



ELIZABETH ALLEN  
*The Employers Group*

Entered from Wesleyan College. Delta Lambda Sigma '40-'42, Crimson Key '40-'41, Hilarian Club '40, Student Council '41, *Evening Signal Reporter* '41-'42, Delta Mu Delta '42, Treasurer Crimson Key '41, Sergeant-at-Arms, Delta Lambda Sigma, '41-'42.



REINALDO ABREU  
MORRIS AMATO

ELIZABETH ALLEN  
JACK BALL



PAULINE BERRY

BUFORD BATTLE

MORRIS AMATO  
*Fourth Corps Area, Signal Office,  
Fort McPherson, Ga.*

Entered from Commercial High School. Glee Club '37-'42, Vice-President Glee Club '39-'40, President Glee Club '40-'41, Intramural Key '40-'42, Treasurer Intramural Key '40-'41.

BUFORD BATTLE  
*Assistant to Mr. Richard C. Brewer,  
Georgia Evening College*

Entered from South Georgia College.

JACK TYUS BALL  
*Ivan Allen-Marshall Co.*

Entered from North Georgia College. Alpha Kappa Psi '41-'42, Venetian Society '41-'42, Interfraternity Council '41, Student Council '41, Treasurer of Senior Class '42.

PAULINE BERRY  
*Austell Public Schools—Teacher*

Entered from West Georgia. Phi Chi Theta '41-'42, Crimson Key '40-'42.



ELIZABETH BRANAM  
EDNA PAYNE COOPER

MILDRED CHRISTIAN  
HORACE V. DAVIS

ED CLARK  
LOIS DOZIER

ELIZABETH BRANAM  
*United States Department of Agriculture,  
Bureau of Agricultural Economics*

Entered from Georgia State College for Women.

MILDRED CHRISTIAN  
*Federal Deposit Insurance Corporation*

Entered from Atlanta Girls' High. Crimson Key '41-'42.

EDWIN MAURY CLARK  
*Hartford Fire Insurance Co.*

Entered from Boys' High School. Delta Sigma Pi '37-'42, Head Master '41, Senior Warden '40, '42, Junior Warden '39, Deltasig Lodge Director '42, Venetian Society '38-'42, First Vice-President '40, Secretary '39, Speakers' Club '39-'42, Delta Mu Delta '41-'42, President '42, Intramural Key '40-'42, First Vice - President '41, Vice - President Freshman Class, Treasurer Sophomore Class, Vice-President Pre-Junior Class, President Senior Class, Intra-Fraternity Council '40-'41, Student Council '37, '39, '40, '42, *Nocturne* staff '38, *Evening Signal* staff, '38, Chairman of Homecoming Banquet '41.

EDNA PAYNE COOPER  
*Twentieth Century-Fox Film Co.*

Entered from Girls' High. Phi Chi Theta (inactive), Crimson Key (inactive), Delta Mu Delta '42.

HORACE V. DAVIS  
*United States Army*

Entered from West Georgia.

LOIS DOZIER  
*Southern Wood Preserving Co.*

Entered from Thomson High School. *Evening Signal* staff '37-'39, '41-'42, Associate Editor '38-'39, Editor '41-'42, Delta Lambda Sigma '37-'42, Treasurer '38-'40, President '40-'41, Phi Chi Theta '41-'42, Crimson Key '38-'42, Vice - President '39-'40, Inter - Fraternity Council '38-'39, and '40-'41, Student Council '37-'38, '39-'40, '41-'42, Secretary Freshman Class '36-'37, Secretary Sophomore Class '37-'38, Secretary Pre-Junior Class '38-'39, Treasurer Junior Class '39-'40, Vice-President Senior Class '41-'42, Voted Biggest Flirt, '36-'37, Miss Evening College '40-'41, Best Secretary '40-'41, Most Intellectual Girl '41-'42, Awarded Delta Lambda Sigma trophy for "Most Ideal Woman Student '40-'41.

HAROLD OWEN DUNCAN  
*State Planning Board*

Entered from Georgia Southwestern College, Americus. Delta Sigma Pi '39-'42, Deltasig Correspondent '41-'42, Master of Festivities '42, Venetian Society '38-'42, Historian '38-'39, First Vice-President '39-'40, Second Vice-President '40-'41, President '41-'42, Interfraternity Council '39-'42, Student Council '39-'40, '41-'42, Speakers' Club '39-'42, Intramural Key, '39-'42, President '41, Basketball Team '38-'39, Tennis Team '39-'42, Spur Club '39-'42, Vice-President '39-'40, Treasurer '40-'41, Playcrafters '38-'39, Glee Club '38-'41 (Yeoman of the Guard, Student Prince, Vagabond King), *Evening Signal* '38-'40, Associate Editor '38-'39, Sports Editor '39-'40, Delta Mu Delta, '42.

ROY O'NEAL ELROD  
*City Comptroller's Office*

Entered from Georgia Tech. Basketball Team '40.

LOUISE FREE

*Mount and Carter, C.P.A.'s*

Entered from State Teachers' College, Livingston, Ala. Editorial Assistant *The Evening Signal* '42.

FRANK GRANT

*Atlantic Company*

Entered from Georgia Tech.

WILLIAM EDWARDS, JR.

*Teacher at School for Speech Correction*

Entered from Georgia Tech.

ROGERS HAMMOND

*Harvard University Graduate School*

Entered from Atlanta Junior College. Delta Mu Delta '42.

HAROLD DUNCAN  
 LOUISE FREE



WILLIAM EDWARDS  
 FRANK GRANT



ROY ELROD  
 ROGERS HAMMOND



VIRGINIA HEMRICK  
*Sears, Roebuck & Co.*

Entered from Young Harris College. Delta  
Lambda Sigma '39-'42, Assistant Treasurer  
'40-'41, Spur Club '40-'42, Treasurer '41-'42.



ESSIE MAE HOWSE  
*Agricultural Department, Courthouse*

Entered from Russell High. Dramatic Club  
'37-'38.



VIRGINIA HEMRICK  
FRANK INMAN

ESSIE HOWSE  
JOE JACKSON



W. F. JOHNS

BILL JACOBS

FRANK S. INMAN  
*Central of Georgia Railway*

Entered from University of Florida. Delta  
Sigma Pi '41-'42.

WILLIAM C. JACOBS  
*The Newbold Development Co.*

Entered from North Fulton High. Venetian  
Society '41-'42.

JOE V. JACKSON  
*Southern Bell Tel. and Tel. Co.*

Entered from Commercial High. Telephone  
Students' Club '42.

W. FRANK JOHNS  
*Sears, Roebuck & Co.*

Entered from Berea College.

**JEANNE JOHNSON**  
*Federal Reserve Bank*

Entered from Georgia State College for Women. Delta Lambda Sigma '40-'42, Treasurer '41-'42, Crimson Key '41-'42, Delta Mu Delta '42, Glee Club '41-'42, Interfraternity Council '40-'42, Vice-President '41-'42, *Evening Signal* staff '41-'42, Elected President Student Body for '42-'43.

**HARRY JONES**  
*Fourth C.C.C. Office, U. S. Government*

Entered from East Central Junior College, Decatur, Miss. Student Council '41-'42.

**LENA RUTH LAWRENCE**  
*Office of Inspector of Naval Material,  
U. S. Navy Department*

Entered from Bob Jones College, Cleveland, Tenn. Phi Chi Theta '39-'42, President '42, Treasurer '41, Crimson Key '40-'42, Interfraternity Council '41-'42.

**ERLENE WHEELER LOMINACK**  
*Plantation Pipe Line Company*

Entered from South Georgia College. Crimson Key '40-'42, Treasurer '41-'42, Kappa Theta '40-'42, Vice-President '41-'42, President '42, Interfraternity Council '42.

**TOM LUCK**  
*Hardware Mutual Casualty Co.*

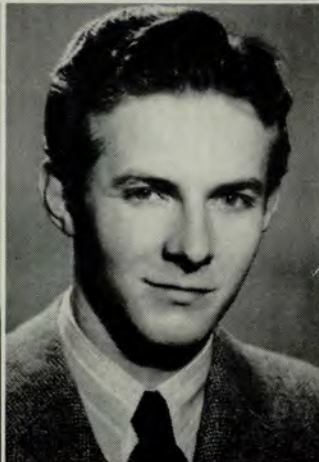
Entered from West Georgia College. Delta Sigma Pi '39-'42, Master of Ceremonies '40-'41, Junior Warden '41-'42, Student Council '39-'42, President Student Council '41-'42, President Student Body '41-'42, Vice-President Junior Class '40-'41, Venetian Society '40-'42, Second Vice-President '41-'42, Speakers' Club '39-'42, Chairman of Debates '40, '41, Voted Mr. Evening College '40-'41, Most Popular '41-'42, Most Likely to Succeed President Roosevelt '41-'42, Interfraternity Council '41-'42.

**WARREN McCLAM**  
*City of Atlanta*

Entered from Tech High School. Speakers' Club '40-'42, Intramural Key '40-'41.



JEANNE JOHNSON  
HARRY JONES  
LENA RUTH LAWRENCE



ERLENE LOMINACK  
TOM LUCK  
WARREN McCLAM





CLAIRE MANNERS  
MRS. JOHN D. MITCHELL

NELLIE MARET  
WORTH P. O'DELL

HOMER MERRILL  
HAZEL PURDIE

CLAIRE MANNERS

*Whiteford School—Public School Secretary*

Entered from Girls' High School. Delta Lambda Sigma '35-'42, Vice-President '39-'40, Delta Lambda Sigma Scholarship Pin two quarters, Spur Club '39-'42, Playcrafters '38-'40, Secretary '39-'40, Tapped with Playcrafters Key for Excellence in Dramatics, June '38, Student Council '39, '42, *Evening Signal* staff '39-'40, Crimson Key '39-'42, President, '41-'42, Honor Roll '39, '42, Delta Mu Delta '42.

MRS. JOHN D. MITCHELL

*Teacher in Smyrna Grammar School*  
Entered from Fulton High School. Playcrafters '36-'41.

NELLIE WILLIAMS MARET

*Diamond Match Co.*

Entered from Georgia State College for Women. Crimson Key '40-'42.

WORTH P. O'DELL

*U. S. Treasury Department*

Entered from Birmingham Law School. Delta Mu Delta '42.

HOMER MERRILL

*U. S. Army*

Entered from Putnam High School. Speakers' Club (inactive), Intramural Key (inactive).

HAZEL PURDIE

*Fulton County Department of Public Welfare*

Entered from Russell High School.

FORD RIVES  
General Electric Co.

Entered from Central Night School. Delta Sigma Pi '38-'42, Treasurer '39-'40, Head Master '41-'42, Speakers' Club '36-'42, Treasurer '37-'38, Vice-President, '38-'39, President '40-'41, Theta Xi Zeta '39-'42, Intramural Key '39-'42, Treasurer '39-'40, *Evening Signal* '39-'40, Associate Editor '39-'40, Student Council '38-'39, Classroom Representative '38-'39, Interfraternity Council '41-'42.

EMILY ROBERTS  
Social Planning Council

Entered from Girls' High School. Femartia Club '38, Crimson Key '39-'42, Secretary '40-'41, Student Council '41, Delta Mu Delta '41-'42, Secretary '41-'42, Delta Mu Delta Scholarship Key '39-'40, Robert R. Johnson Scholarship Key '40-'41.

RALPH SAYE  
Harbor Plywood Corporation

Entered from Draughon's School of Commerce. Venetian Society '41-'42, Alpha Kappa Psi '41-'42, Intramural Key '41-'42.

FLORENCE PURSELL  
American Bakeries Co.—Purchasing Dept.

Entered from Atlanta Junior College. Pledge of Delta Lambda Sigma Sorority '41.

ELIZABETH RAMSDEN  
Plantation Pipe Line Company

Entered from Girls' High School. Crimson Key '39-'42, President '39-'40, Phi Chi Theta '38-'42, Secretary '38, Grand Councillor '40-'42, Winner Phi Chi Theta Scholarship Key '40, Kappa Theta '37-'42, President '38-'39, Winner Kappa Theta Undergraduate Trophy '40, Spur Club '37-'42, President '40-'41, Student Council '38-'40, Interfraternity Council '38-'40, Playcrafters '37-'39, Secretary of Senior Class '42, Delta Mu Delta '42, Winner of Delta Lambda Sigma Trophy for "Most Ideal Woman Student" '42.

SARA JO RICE  
American Mutual Insurance Co.

Entered from Berry College, Rome, Ga.



FLORENCE PURSELL  
ELIZABETH RAMSDEN  
SARA JO RICE



FORD RIVES  
EMILY ROBERTS  
RALPH SAYE

DICK SEIGNIOUS  
*Southeastern Optical Co.*

Entered from Tech High School. Spanish Club.

REV. D. B. SHELNUTT  
*Pastor, Elizabeth's and Jay's Chapel,  
 Methodist Churches, Marietta, Ga.*

Entered from Young Harris College. Principal, Mt. Harmony Grammar School, Cobb County.



DICK SEIGNIOUS  
 LOUISE SOWELL

D. B. SHELNUTT  
 BILL SUTTLES

CARL THOMPSON

HAROLD TABOR

LOUISE SOWELL  
*Retail Credit Company*

Entered from Girls' High School. Kappa Theta '41-'42, Playcrafters '37-'42, Secretary '41, Crimson Key '40-'42, Vice-President '42.

HAROLD TABOR  
*U. S. Army*

Entered from Young Harris College. Alpha Kappa Psi, Venetian Society, Historian '40, Feature Editor of the NOCTURNE '40-'41, Alpha Kappa Psi Pi-Lot Staff '40-'41.

BILL SUTTLES  
*Tax Collector, Fulton County*

Entered from Mercer University. Alpha Kappa Psi '41-'42, Secretary Intramural Key '41-'42, Speakers' Club '41-'42, Student Council '41-'42, Editor of *Flambo* '39-'40.

CARL THOMPSON  
*Radio Station WSB*

Entered from Boys' High School.

JULIETTE TODD

*Employed by Georgia Evening College*

Entered from Shorter College. Crimson Key '40-'42.

WILBUR JAMES WHITE

*Standard Oil Company*

Entered from Marietta High School.

JAMES WELCH

*War Department*

Entered from Boys' High School. Delta Sigma Pi '38-'42. Speakers' Club '38-'42, Delta Kappa '40-'42. Playcrafters '37-'38, Student Council '38-'40.

MARGARET YOUNG

Entered from Oglethorpe University.

VIRGIL ZINK

*Atlanta Joint Terminal*

Entered from Commercial High School.



JULIETTE TODD

JIMMIE WELCH

W. J. WHITE

MARGARET YOUNG

VIRGIL ZINK

# Junior Class

Betty greets  
Sorority sisters—  
(plug)



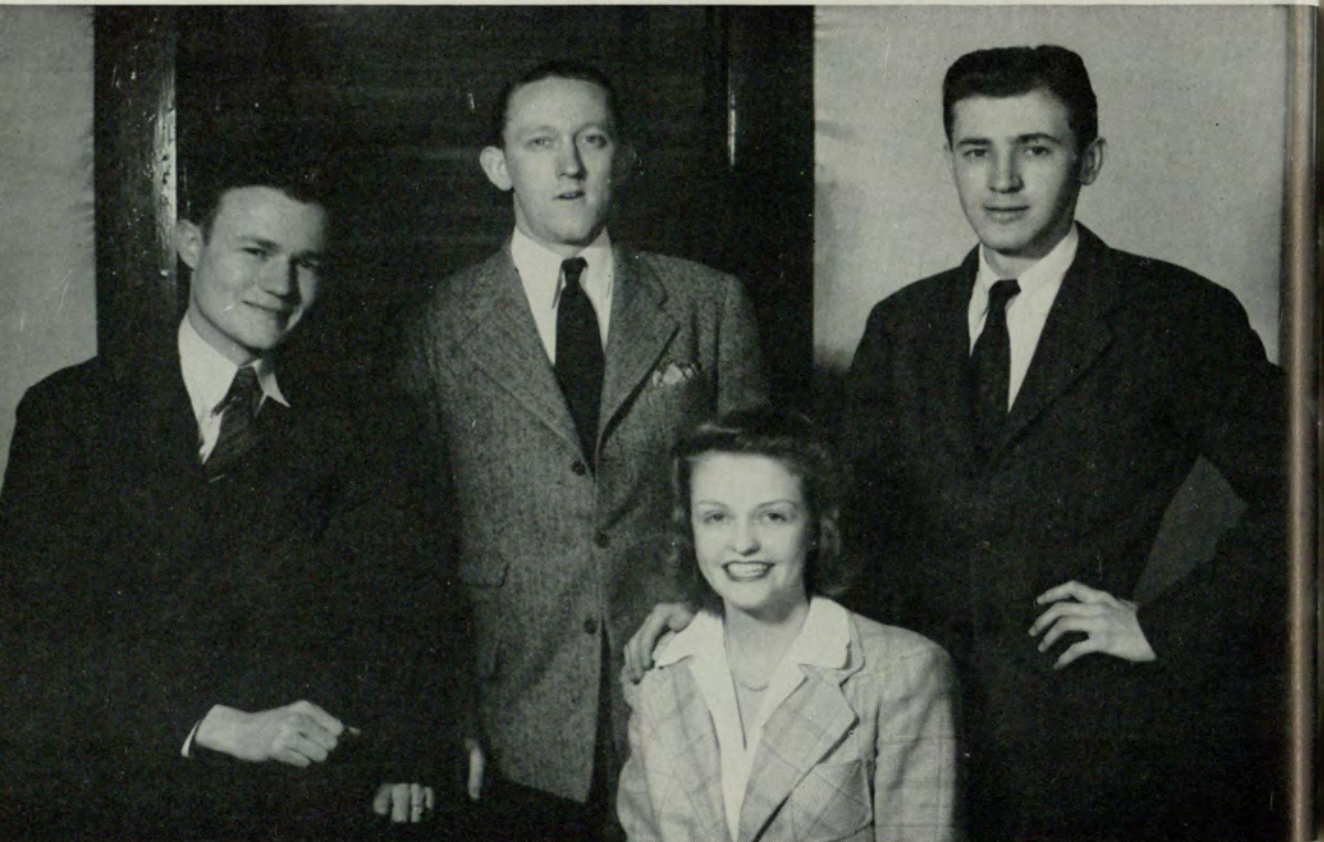
## OFFICERS

- DEWITT HUNT..... *President*  
 BILL DELOACH..... *Vice-President*  
 LOUISE JOHNSON..... *Secretary*  
 LARRY EVANS..... *Treasurer*



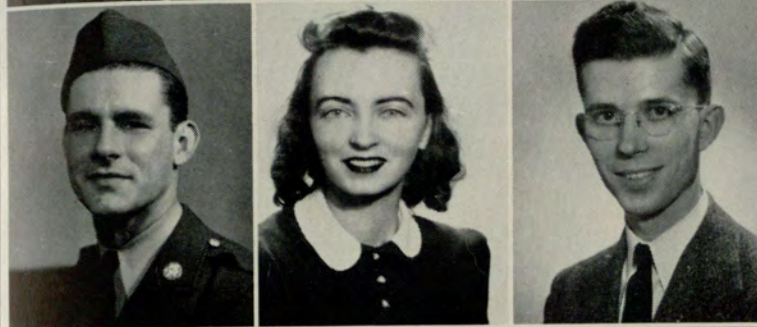
The Mighty One

Laxson and friend  
The paper's upside d

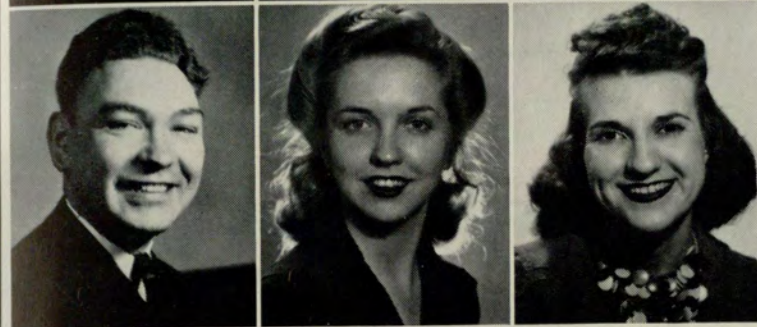




IRA ABERNATHY  
KATHLEEN BAKER  
ALLIE BARNES



D. R. BENNETT  
MELROSE BLACK  
FRED BRANAN



LUTHER BURROUGHS  
MIRIAM CALLAWAY  
MIMI CAPDEVIELLE

BARNEY CARNES  
FRANK PATTON COOK





BOB DALE  
 BILL DeLOACH  
 JEANETTE DOZIER  
 ROGER DOZIER



ELIZABETH EADDY  
 GEORGE EDWARDS  
 LARRY EVANS  
 BOB FARRAR

TOM FARRAR  
 LUTHER FITZGERALD  
 JOHNNY FORKNER



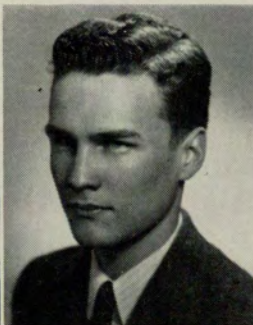


WALTER FREEMAN  
ANNABELLE HENRY

BOB GARNER  
DeWITT HUNT

PAT HEAD  
LOUISE JOHNSON

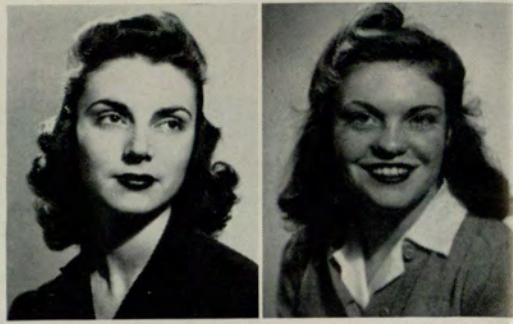
FRANCES HENDRICKS  
INEZ KITCHENS



JIMMIE LAXSON  
ANNA LYLE  
CHARLES McCLURE



EVELYN MATHIS  
ANN MURPHY



GENEVIEVE MURRELLE  
CAROLINE REID  
EVELYN RICHARDS



JESSE ROACH  
BETH ROGERS  
LEWIS SLATON



FORREST SPURGEON  
BILL THOMAS  
L. P. TURNER



Joseph H. Wolfe



Anne Walker  
Betty Williams

Evie Warlick  
June Wilson

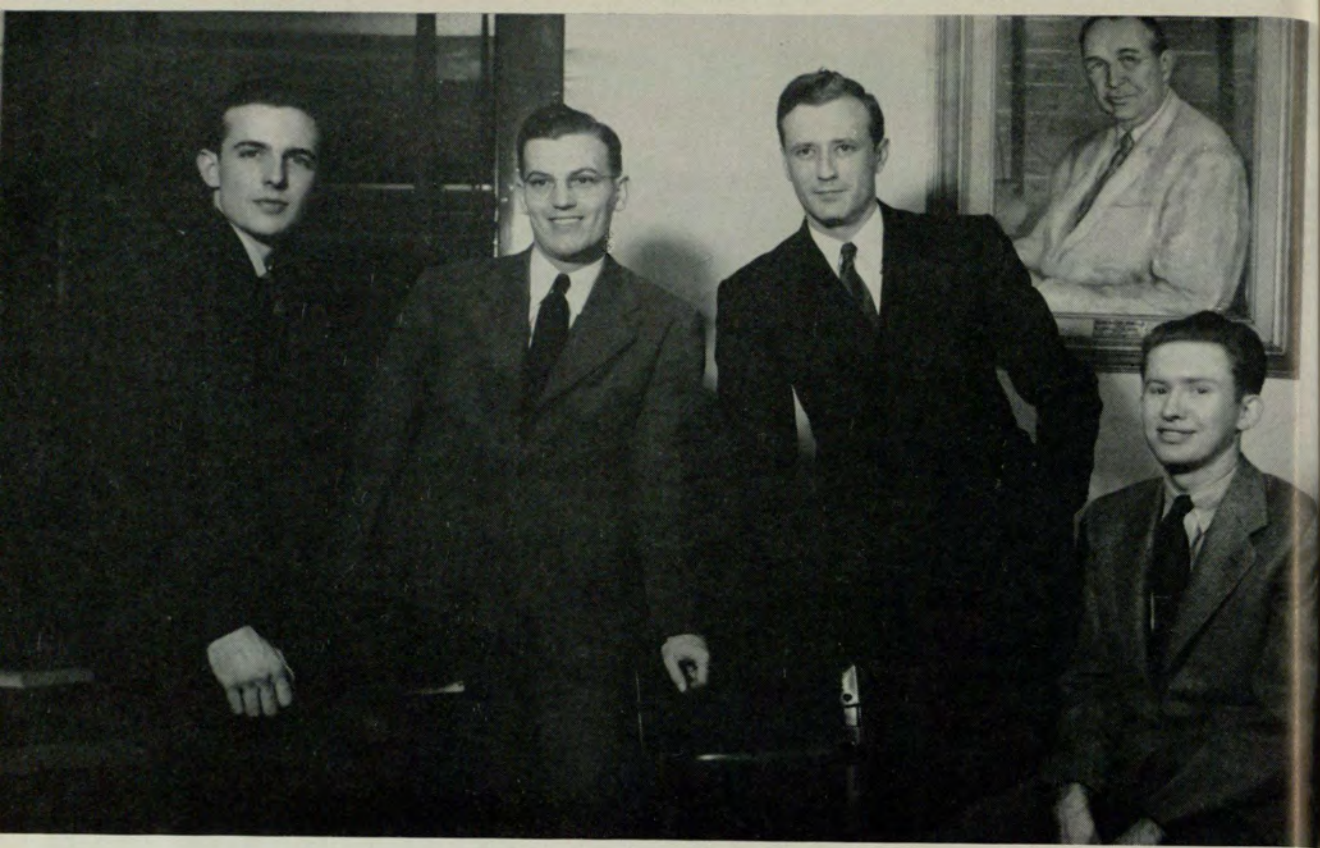
Mary Elizabeth Wells  
Fred Windham

## Those present and accounted for - - - fall and winter '41-'42

IRA R. ABERNATHY  
 MRS. OLIVIA FLOYD ANDERSON  
 KATHLEEN L. BAKER  
 ALLIE BARNES  
 D. RICHARD BENNETT  
 MELROSE BLACK  
 JOAN BRIGGS BORDEN  
 WILLIAM LEWIS BOST  
 ROBERT BOWEN  
 FRED H. BRANAN  
 MRS. HAROLD BROWN  
 LUTHER PIERCE BURROUGHS  
 MARY KATE BURRUS  
 JAMES TERRELL BYRD  
 MARIAN FRANCES CALLAWAY  
 HELENA MIRELLE CAPDEVIELLE  
 BARNEY EDWARD CARNES  
 PAUL FRANKLIN CLARK  
 ELIZABETH FRANCES COLLEY  
 MRS. DOROTHY CARLTON COOKE  
 FRANK PATTON COOKE  
 ROBERT M. DALE  
 WILLIAM MEINERT DeLOACH  
 FRED HENRY DENDY, JR.  
 JEANETTE DOZIER  
 ROGER DOZIER  
 GENEVIEVE DUKE  
 LILLIAN MARTHA DURLING  
 ELIZABETH WADDELL EADDY  
 GEORGE ROBERT EDWARDS  
 FLORRIE LEE ERB  
 LAWRENCE S. EVANS  
 ROBERT HENRY FARRAR  
 THOMAS LEE FARRAR  
 SIDNEY HERBERT FELDMAN  
 THRO. D. FENSTER  
 LUTHER CLARENCE FITZGERALD  
 JOHNNY FORKNER

HENRY ARTHUR FOSTER  
 SARAH ELIZABETH FOUNTAIN  
 WALTER ASBURY FREEMAN, JR.  
 BOB A. GARNER  
 CHARLOTTE CLAIRE HARDIN  
 ELIZABETH DODD HARRIS  
 LILA MAE HARRISON  
 MRS. ZEB HATCHER  
 T. WILLIS HAWKINS  
 PATRICIA FRANCES HEAD  
 M. FRANCES HENDRICKS  
 ANNABELLE HENRY  
 GEORGE HINTON HERBERT  
 VIRGINIA REBECCA HIATT  
 JOHN NEIL HOPKINS  
 CLARENCE GORDON HUEY  
 DEWITT CLINTON HUNT, JR.  
 ROSE GARNETT HUNTER  
 CLAIRE LOUISE JOHNSON  
 WILLIAM WASHINGTON JOHNSON  
 RUSS HARRIS JONES  
 INEZ KITCHENS  
 IDA LANDAU  
 ROSE LANDAU  
 JIMMIE CLINTON LAXSON  
 JACK ELLIS LEVY  
 ANNA RUTH LYLE  
 CHARLES A. McCLURE  
 MRS. YDOINE MARHOLEC  
 JOSEPH LOUIE MANN  
 JACK M. MARTIN  
 WILLIAM J. MARTIN  
 EVELYN MATHIS  
 FRED LEE MEYER  
 ANN RITA MURPHY  
 GENEVIEVE MURRELLE  
 THOMAS MONROE MURRAY  
 SARAH LUCY NORMAN

RICHARD HAYES O'CALLAGHAN  
 VIRLA AURELLE PATTILLO  
 RAYMOND RALSTON PRITCHARD  
 EUGENIA REDFERN  
 MARIANNA ROSLYN REDMAN  
 CAROLINE HOWARD REID  
 MRS. EVELYN H. RICHARDS  
 JESSE EUGENE ROACH, JR.  
 BETH ROGERS  
 CONRAD FISCHER ROUTH  
 H. GARTRELLE SANDERS  
 MABLE SCRUGGS  
 LEWIS ROGER SLATON  
 FOREST C. SPURGEON  
 EDWARD STOUT  
 DORIS RUTH STRICKLAND  
 RUFUS L. SUGGS  
 EVERETT G. SUMMERS  
 S. D. TANNER  
 WILLIAM COBB THIBADEAU  
 WILLIAM JAY THOMAS  
 LESLIE PAYTON TURNER  
 JOHN WESLEY WAGNON  
 ANNE HARELLSON WALKER  
 EVIE WARLICK  
 VICTOR H. WATTS  
 VIRGINIA WEAVER  
 MARY ELIZABETH WELLS  
 MRS. HAZEL WILDER WENGER  
 JEROME SILVEY WHATLEY  
 ANN COBB WHITE  
 SARAH ELIZABETH WILLIAMS  
 NORMA JUNE WILSON  
 FRED WINDHAM  
 JOSEPH H. WOLFE  
 BOSCOE V. WOLFE  
 GLENN RIVERS YARBROUGH, JR.



Dalton snapped at Woodings as he tries to balance his plate between two tables.

Boo!



# PRE-JUNIOR CLASS



Camera frightens shy students at supper in refectory.

## OFFICERS

- JIMMIE McNABB . . . . . *President*
- SAM FRANKLIN . *Vice-President*
- FRANK CLOUDT . . . . . *Secretary*
- CECIL POOL . . . . . *Treasurer*

Pre-Junior Crawford as a pledge

JAKE ALHADEFF  
 EMORY BELL  
 BOB BRANDES  
 ODIEL BURNETT



MARTHA CASON  
 FRANK CLOUDT  
 KATHRYN COFER  
 BOB DALTON



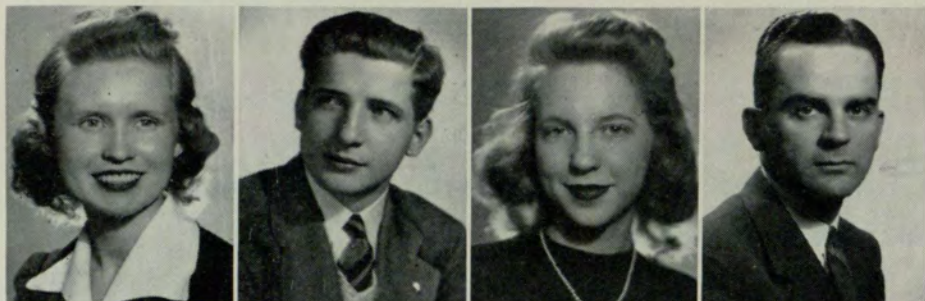
PAT DOBBINS  
 JOSEPHINE ELARBEE  
 HARRIET FISKE



VADIE FLEMING  
 SAM FRANKLIN  
 MARIE GODWIN



ISAAC HABIF  
 BOB HAMES  
 JOE HARRELL, JR.



RUTH ISAKSON  
 EMORY JOHNSTON  
 MARTHA JORDAN  
 EMORY KINARD



AL KUETTNER  
 HUBERT McLUCAS  
 LEONA McMICHAEL  
 CALVIN McMILLAN

JIMMIE McNABB  
 JUANITA MAILEY  
 VIRGINIA MURRAY



CECIL POOL  
 DONNA ROBERTS  
 FRANCES ROBERTS



MILDRED ROUTON  
 NELLE RUSTIN  
 HENRY SHARP



LENA WAGNON  
 CAROLYN TODD  
 DOROTHY STRANGE



CECIL WILLIAMS  
 McCOY WHITE  
 T. J. WEATHERLY



Those present and accounted for - - -  
 fall and winter '41-'42

THOMAS JOSEPH ABRAHAM  
 A. HARVEY ADAMS  
 EMORY LOVICK ADAMS, JR.  
 JAKE ALHADEFF  
 EMILY LUCILLE ARNETT  
 GRACE ELIZABETH BARTON  
 EMORY BOONE BELL  
 MERLE MARIAN BELLAMY  
 BILLIE LUCILLE BENNETT  
 JAMES NEVILLE BLACK  
 RUBY MAE BLISSITT  
 TOMMIE BLUE  
 FRED JOSEPH BORING  
 ORION ELIZABETH BOWDEN  
 ROBERT ORRIN BRANDES  
 MARY CATHERINE BROOKS  
 MARY GRANTT BUMSTEAD  
 ODIEL BURNETT  
 MARTHA LEE BURNS  
 HARRY ALAN CANTRELL  
 MARTHA GUARD CASON  
 JAMES EMORY CHAPMAN  
 MRS. MARY FARMER CHERRY  
 SAM D. CHERRY, JR.  
 MARGARET JANE CLARY  
 FRANK WINFIELD CLOUDT  
 JACK LEONARD CODDING  
 KATHRYN ELIZABETH COFER  
 TODD G. COLE  
 NELL COOK  
 CURTIS NORMAN COOPER  
 MARY JO CRANE  
 ROBERT PEYTON CUNNINGHAM  
 JAMES WISTER CURRY  
 ROBERT THOMAS DALTON  
 MARY LINDA DAWES  
 JEFFERSON DIXON  
 PAT DOBBINS  
 RUTH LUCILLE DOUGHERTY  
 MRS. WILHELMINA BLAIR DURHAM  
 JOSEPHINE ELARBEE  
 DAVID R. ENLOW  
 JESSE PRESTON ERVIN  
 DOROTHY ESCOTT  
 SARA NELL FAGAN  
 ROBERT B. FERRELL  
 HARRIET COLEGROVE FISKE  
 VADIE KATHRYN FLEMING  
 ALBERT PERRY FORD

NORMA LAVADA FOSTER  
 SAMUEL OWEN FRANKLIN  
 WILBUR WOOD FREDERICK  
 JAMES GEORGE GASTON  
 MARIE ELIZABETH GODWIN  
 LUELLA HIGGINS GUNN  
 ISAAC NACE HABIF  
 VERNELLE HAGAN  
 WILLIAM KILPATRICK HALL  
 ROBERT LYLE HAMES  
 BETTY PEARL HANNAH  
 RUBY MAY HARPER  
 JOE M. HARRELL, JR.  
 MILDRED ELSIE HARRIS  
 WILLIAM BERRY HARTSFIELD  
 WILLIAM HOWARD HIGGS  
 LYDIA ANNE HODGSON  
 MERLE ELIZABETH HOLCOMBE  
 HIRAM JAMES HONEA  
 JUNE EVELYN HUNT  
 KAY JANE HUTCHINSON  
 CHARLES R. IRELAND  
 RUTH ELIZABETH ISAKSON  
 EMORY A. JOHNSTON  
 MARTHA ELIZABETH JORDAN  
 MARY KARLICK  
 MAY AGNES KESTLER  
 EMORY KINARD  
 EVERETT KNUDSON  
 AL KUETTNER  
 ROBERT BEN LAWLER  
 JOHN E. LEE  
 JOHN W. LEE  
 CLYDE A. LINEBERGER  
 JAMES LEONARD LONG  
 FOREST EARL McCREADY, JR.  
 ELIZABETH HORTENSE McDONALD  
 EDNA C. McGRATH  
 HUBERT G. McLUCAS, JR.  
 MARTHA LEONA McMICHAEL  
 LEROY CALVIN McMILLAN  
 JAMES H. McNABB  
 WILLIAM HARRIS MALPASSE  
 DONALD HOPKINS MAHONEY  
 JUANTA MAILEY  
 MARY LOUISE MAYES  
 MRS. DOROTHY WARREN MILLER  
 HAROLD N. MILLER  
 WILLIAM FRANK MILLER

HAROLD ARCHER MONTGOMERY  
 BEN GRAY MOORE  
 VIRGINIA LOUISE MURRAY  
 ELSIE BLANCHE NELMS  
 JOHN DAY NUNNALLY  
 SIDNEY NOVECK  
 JULIUS OELSNER  
 HENRY BOYKIN PARKER, JR.  
 JOHN LEWIS PASCHAL  
 HENRY CABANISS PEOPLES  
 SUZANNE PEREDO  
 CECIL AUBREY POOL  
 CLARENCE MITCHELL RAINEY  
 LOUISE ROACH  
 DONNA LOUISE ROBERTS  
 FRANCES ERLINE ROBERTS  
 MARY GRACE RODGERS  
 A. LOUIS ROGERS, JR.  
 MARIAN ROGERS  
 VERA MILDRED ROUTON  
 SARAH WILLIFORD ROWAN  
 NELLE M. RUSTIN  
 HENRY WRIGHT SHARP  
 ELAINE SMITH  
 MARY ELLEN SMITH  
 CHARLES CARDEN SNOW  
 KATHLEEN STEELE  
 GEORGE MEREDITH STEWART  
 DOROTHY JEYNELLE STRANGE  
 JUNE STRICKLAND  
 GLENN H. STROTHER  
 ELIZABETH CAREY TAYLOR  
 WILLIAM ROBERT THOMPSON  
 CAROLYN TODD  
 WILLIAM RICHARD THURMAN  
 CHARLES A. TURNER  
 HUBERT GREGORY VEAL  
 MARY ANGELA VESLKA  
 LENA FRANCIS WAGNON  
 VALERIA WATKINS  
 THOMAS JEROME WEATHERLY  
 J. EDGAR WHATLEY  
 N. McCOY WHITE  
 MARTHA ANGELA WILKERSON  
 CECIL PERRY WILLIAMS  
 JAMES NUNNALLY WILLIAMSON  
 VALERIA CURTIS WISE  
 ETHELY YANCEY  
 JOHN C. YOUNG

# Sophomore Class

## OFFICERS

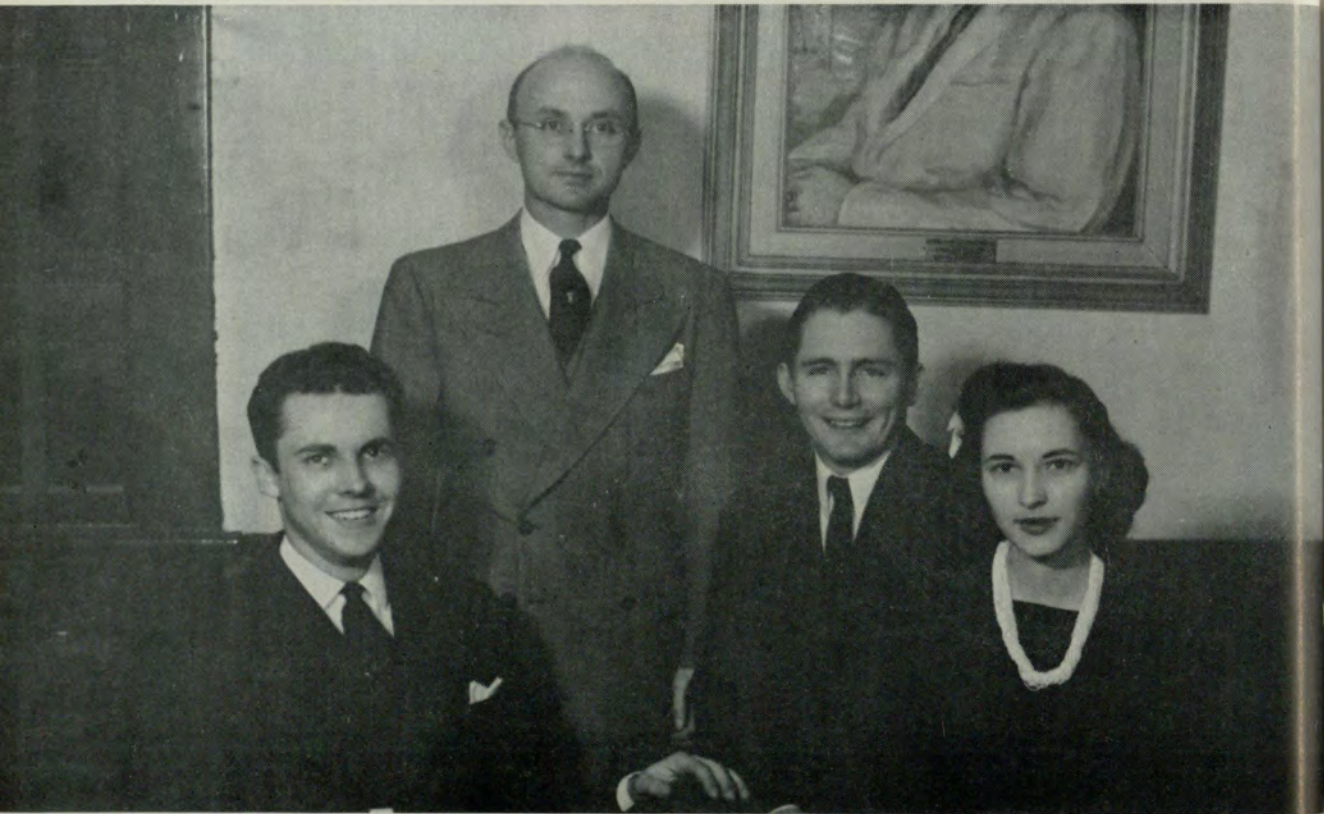
- JAN KELLER ..... *President*  
 GRADY BANKS ..... *Vice-President*  
 ROSEMARY HUGHES ..... *Secretary*  
 GEORGE SHELL ..... *Treasurer*



Hogan pays Soph. class Nocturne assessment at end of successful "Soph. Hop."

Pafford cuts a class.

Blackmon and Williams  
 take over Charleston  
 "Well, y'all come!"





FRANCIS AKINS  
MARY JANE BAKER  
GRADY BANKS  
ED BECKHAM

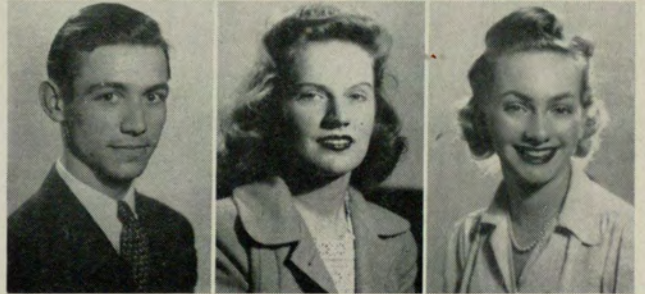


BILL BORDEN  
JOE BRYAN  
HOGAN BUFORD  
FLORENCE CAMP

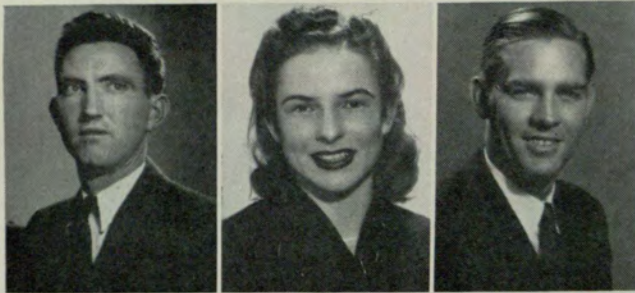
ETHELYN CANTRELL  
LUCY COBB  
SARA COCHRAN



LOUIS CONE  
SARA COOK  
MARJORIE DEAN







JIM DILLARD  
PAULA ELAM  
DON FLOYD



L'ENGLE GRAHAM  
LOUIS GREENE  
EMILY GREGORY

BOBBIE GRIER  
FRANK HAMILTON  
MRS. JOE HARRELL, JR.  
MILDRED HARRIS



LATRELLE HOFFMAN  
BOB HOLDER  
DOROTHY HUDGINS  
ROSEMARY HUGHES



MATILDA IVEY  
JAN KELLER  
MARY LASSITER



ELEANOR LEWIS  
JOHN LOVEJOY  
SARA McDANIEL



JACK MARBUT  
BILL MARR  
MARY LOUISE MERRIMAN  
BUCK MINOR



MADGE MOORE  
EMMA LOU MOSS  
JAMES MARVIN NICHOLSON  
TED O'CALLAGHAN

ED PAFFORD  
 BEN PERRY  
 C. N. PERRYMAN  
 MURIEL REDFERN



MARY RHODES  
 FRANCES SCREVEN  
 ANN ROSS  
 GEORGE SHELL



SEWELL SILLMAN  
 W. CREIGHTON SIMPSON  
 THELMA SORROW



BUSTER STEWART  
 DAVID STRIPLING  
 G. L. THOMAS



MILLIE TORBERT



BEN TUCK



MARY JANE TURNER



CECIL TURNER



LAURA RUTH WEBB



HARRIET WILLIAMS FRANCIS WRIGHT

## Those present and accounted for - - - fall and winter '41-'42

FRANCES AKINS  
 BARBARA ANN ALLEN  
 SARAH TALLULAH ATHEARN  
 FRANK YOUNG BAKER  
 MARY JANE BAKER  
 WINFORD GRADY BANKS  
 EDWIN TAYLOR BECKHAM  
 GEORGE S. BECKHAM  
 EMORY BOONE BELL  
 BENJAMIN W. BINFORD  
 WARREN L. BLACKMON  
 WILLIAM B. BONE, JR.  
 WILLIAM BORDEN  
 JONATHAN AVERY BOWMAN  
 PIERCE WESLEY BRISCOE  
 LAWRENCE M. BROWN  
 MORTON R. BROWN  
 HOGAN F. BUFORD  
 MORIE COOPER BURNS  
 FLORENCE CAMP  
 ETHELYN FRANCES CANTRELL  
 TOM DANIEL CARLTON  
 ROBERT LYONS CARMICHAEL  
 JAMES CAMPBELL CARROLL  
 MARTHA GUARD CASON  
 ROBERT PETER CATLIN, JR.  
 LUCY COBB  
 SARA COCHRAN  
 LOUIS H. CONE  
 SARA COOK  
 DALE A. CRITES  
 MRS. FRANCES GRIER CROCKETT  
 ROBERT THOMAS DALTON  
 LUKE JOHNSON DARNELL  
 MARJORIE ELOISE DEAN  
 JAMES CLEVELAND DeLAY  
 MARCEL GERMAIN DeLARUE, JR.  
 JAMES DILLARD  
 AMY DODD  
 MARY FRANKLIN DOOM  
 MARTHA ELIZABETH DOYLE  
 CALEY JONES EADY  
 MRS. PAULA ELAM  
 JOSEPH BENJAMIN FENNELL  
 FRANK J. FETZER  
 DONALD FLOYD  
 HUGO RUDOLPH FRANZ  
 KITTY FRAZIER  
 LAURENCE SWANSON FREDERICK  
 FRANCES ELIZABETH GIBSON  
 GEORGE E. GRAHAM  
 L'ENGLE GRAHAM  
 JIMMY THOMAS GREENE  
 LOUIS R. GREENE  
 EMILY ELIZABETH GREGORY  
 BOBBIE ELAINE GRIER

FRANK EUGENE HAMILTON  
 JAMES HAROLD HANCOCK  
 INA CATHERINE HARRELL  
 MRS. JOE HARRELL, JR.  
 MARY LOCKIE HARRINGTON  
 JAMES EUGENE HARRIS  
 MILDRED EVELYN HARRIS  
 DOROTHY JOSEPHINE HARRISON  
 EUNICE MARIE HAZEL  
 ROBERT JAMES HEAD  
 FLEWELLYN HOLT HERTWIG, JR.  
 LATRELLE HOFFMAN  
 ROBERT HOLDER  
 ROBERT LYNN HOLLEY  
 J. B. HOWELL  
 DOROTHY MARGUERITE HUDGINS  
 ROSEMARY HUGHES  
 CATHERINE MATILDA IVEY  
 LOIS JACKSON  
 JANIE RUTH JACKSON  
 DAVID S. JACOBS  
 ALLEN O. JERNIGAN  
 MARY BRITT JOHNSON  
 J. EARLE JOHNSTON  
 WALDO JAN KELLER  
 EDNA MAE KEENER  
 CHARLES JACOB KINSEY  
 AL KUETTNER  
 ELEANOR CAROLYN LAMOTTE  
 MARY LASSITER  
 ELEANOR LEWIS  
 MRS. MAGGIE CREASY LONG  
 J. H. LOVEJOY  
 ANNETTE SARA McDANIEL  
 MRS. ESTELLE T. McDERMIT  
 NETTIE MADDEN  
 JUANITA MAILEY  
 JACK MARBUT  
 WILLIAM THOMAS MARR  
 MABEL RUTH MARSHALL  
 JAMES ROY MARTIN, JR.  
 KENNETH WILLIAM MATHews  
 MARY LOUISE MERRIMAN  
 JEAN FLORENCE MILLARD  
 M. WILTON MINOR  
 MARY CECILE MONTGOMERY  
 ANNA MARIE MOORE  
 IDA MADGE MOORE  
 FRANK ANTHONY MORRIS, JR.  
 MARION FLOYD MORRIS  
 JOHN EDWARD NIRRUSIB  
 EMMA LOU MOSS  
 PERRY WESLEY MULLEN, JR.  
 JAMES MARVIN NICHOLSON  
 NIXIE NORRIS

THEONE NORRIS  
 THEODORE PETER O'CALLAGHAN  
 PAUL L. OTWELL  
 MARION EDWARD PAFFORD  
 CHARLOTTE QUILLIAN PASCHAL  
 W. CLIFFORD PATTILLO  
 ERNEST PAYTON  
 CLAY W. PENICK, JR.  
 BEN FRANKLIN PERRY  
 C. N. PERRYMAN  
 GEORGE CUSTER POPE  
 VERNON COKE PRICKETT  
 MURIEL REDFERN  
 ANN ROSS  
 VERA MILDRED ROUTON  
 NELLE M. RUSTIN  
 RUTH HENRIETTA SANE  
 MILDRED BLANCHE SAULT  
 FRANCES ELIZABETH SCREVEN  
 MILDRED SCOTT  
 WELDON RAYMOND SCROGGS  
 GEORGE D. SHAFE  
 GEORGE W. SHELL  
 MARY ELIZABETH SHELTON  
 JOSEPH DAVIS SHEPPARD  
 SIMON BALDWIN SHINGLER  
 SEWELL SILLMAN  
 LINTON HARRIS SMITH, JR.  
 MORGAN LEWIS SMITH  
 CALVIN C. STEED  
 ROY EUGENE STEINHAVER  
 ADNA S. STEWART, JR.  
 WILLIAM E. STREYER  
 GABRIEL LEE THOMAS  
 MELVIN DARDEN TINSLEY  
 MILLIE TORBERT  
 BENJAMIN TUCK  
 GLADYS KINGSLEY TURNER  
 MILFORD K. THURBER  
 CECIL TURNER  
 MARY JANE TURNER  
 LAURA RUTH WEBB  
 MARY ELIZABETH WELLS  
 BETTY LEE WILLIAMS  
 HARRIET FRANCES WILLIAMS  
 ROBERT WESLEY WILLIAMS  
 DAN WINGARD  
 VIRGINIA WISE  
 GARNETT O. WOOD  
 BESSIE LUCILLE WOODRUFF  
 O. ED WORLEY  
 FRANCIS PICKENS WRIGHT  
 WANDA AVOLYN WRIGHT  
 EDWARD CARSON YEARTY  
 CLIFFORD BOYD ZIMMERMAN

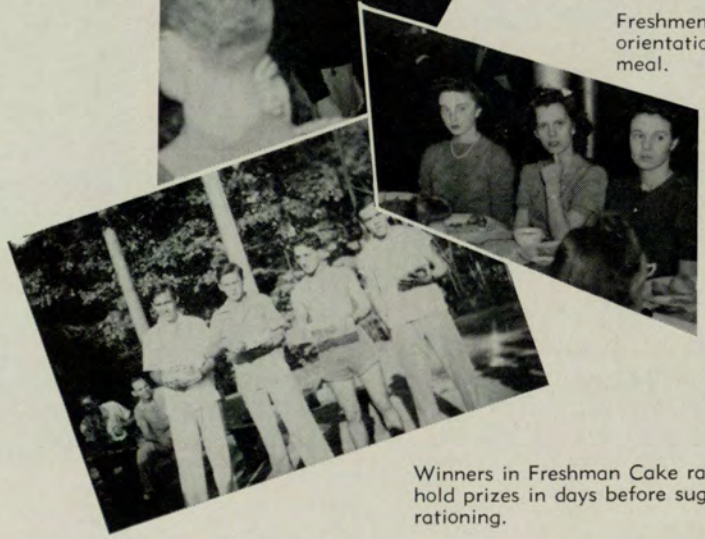


OFFICERS

- L. C. DUNCAN..... *President*  
 FRED O'KELLEY..... *Vice-President*  
 MIRIAM ROUSE..... *Secretary*  
 CONNIE BAILEY..... *Treasurer*



Manuel and friends at lodge.



Freshmen orientation meal.

FRESHMAN CLASS

Winners in Freshman Cake race hold prizes in days before sugar rationing.

LYNN ADAMSON, JR.  
CLAUDE ALLEN



KATHERINE AUTREY  
CHARLES BAILEY



CONNIE BAILEY  
FRANCES BAILEY



VICTOR BARRON  
ELOISE BEACHAM



VIC BERNHARDT  
DOROTHY BISHOP



JAMES BLISSIT  
JEWEL BLOUNT



HARRIET BOMAR  
CHARLES BROOME



RALEIGH BRYANS  
HENRY BURSON





EARL T. BYERS  
JUNE CANTRELL



MARCUS CARSON  
DAVID CASON



JANIE B. CHASE  
ROBERT L. CHILDS



HOWARD CLARK  
VIVIAN CLOWDIS



JIMMY COBB  
JOHN THOMAS COBB



TOM CONNELL  
DOROTHY COREAUX



EVELYN CRAWFORD  
M. O. CRAWFORD



MARY CRUMBLEY  
HOWARD DeFREESE

FRANCES DIGBY  
MARTHA DOYLE



L. C. DUNCAN  
R. H. ELLIOTT



CHARLES ENGLISH  
DAVID ENGLISH



VIRGINIA EWING  
MARY LOUISE FALLAIZE



ANNE FITZGERALD  
DORRIS FORBES



RUTH FORTNER  
NORMAN FRANKEL



GLENN FRICK  
BENJAMIN GINSBERG



THOMAS GULLY  
ROY HACKNEY







HELEN HACKNEY  
HUGH HALLMAN



JAMES HAMPTON  
MAXWELL HARRELL



RUBY HARRELSON  
EVELYN HARRIS



ROBERT HARRISON  
BILLY HATCHER



ERNEST HICKS  
SCOTT HUDGINS



NANCY HURLEY  
FRANKIE KIRKLAND



EUGENE KIRKMAN  
RALPH LATHEM



ED LINDBERG  
JOHN McCCHESNEY

BETH McCONNELL  
MURIEL McGRIFF



MARY JANE McGUIRE  
PHILLIP MAFFETT



DOYLE MARTIN  
MARY MAULDIN



FRANCES MAYO  
MARGARET MITCHELL



FLOYD MOON  
JACQUELIN MORRIS



MARTHA NALLEY  
DAVID NASH



CHARLOTTE NELSON  
FRED O'KELLEY



S. O'QUINN, JR.  
LINDA PERRY





JOE PHILLIPS  
VIRGIL RAINES



LAMAR RAY  
SARAH RAY



ESTELLE RHODES  
JAMES D'ORSEY ROWE



MARCELLE ROUSE  
MIRIAM ROUSE



RUBY SELLERS  
JAMES SHANNON



JEWEL SHELNUTT  
BOB SIMMONS



BOB SMITH  
ELIZABETH STRIBLING



DORIS SULLIVAN  
JOE SULLIVAN

LILLIAN UPSHAW

JAMES WALKER



PARKS WILLIAMS

BOB YOUNG

## Present and Accounted For - - - Fall and Winter '42

Lynn Mallory Adamson, Jr.  
Claude William Allen  
Harry Arthur Allen  
Louise Allen  
Arnold Anderson  
Robert Marion Arnold  
Marshall A. Asher, Jr.  
Paul R. Atherton  
Catherine Frances Autrey  
Ganelle Mobley Bacchus  
James Watson Bacchus  
Charles Howe Bailey  
Constance Anne Bailey  
Frances Marie Bailey  
Jane Dean Baker  
Martha Stewart Ballew  
Betty Bang  
Charles Edward Barron  
Victor Vinson Barron  
Eloise Beacham  
William Fletcher Bernhot  
Victor Wyndell Bernhardt  
Dorothy Bishop  
Raymond Bissinger  
Lillian Lois Black  
James Blissit  
Jewel Allie Blount  
Harriet Leslie Bomar  
Donald Leroy Bosshardt  
Joe Chandler Bostian  
Lois M. Bostick  
John Burke Bowling  
Lawrence Bernard Boyd  
Thomas Williams Bradley  
Sara Sue Brock  
Charles McKinne Broome III  
Doris Elizabeth Brooks  
Grace Lazelle Brooks  
James Robert Brooks  
James W. Brown, Jr.  
Spede Joe Bryan  
Raleigh Bryans  
Sara Anne Bryant  
Henry W. Burson  
Samuel Monroe Busch  
Fred Caswell Bush, Jr.  
Earl Taylor Byers  
Forrest Cain  
Jane Cantrell  
Marcus Dolvin Carson  
John Channing Carter  
David Augustus Cason, Jr.  
Harry Cenker  
Jack A. Chance  
Ralph Ogden Chapman  
Janie B. Chase  
John P. Cheney  
William Cole Childers  
Robert Littleton Childs  
Herbert D. Clark  
Howard Wood Clark  
Edward Clegg  
Otis E. Clotfelter, Jr.  
Vivian Parks Clowdis  
John Thomas Cobb  
Norma Jean Colee  
Leo Roy Coletti  
Elna Colquitt  
Thomas M. Connell  
Betty Cooper  
Dorothy Edna Coreaux

George C. Corrigan  
Elizabeth Cory  
Ben Williams Cotton, Jr.  
Sarah Miller Cotton  
Claudia Marie Couch  
John Howell Cox  
Kathleen Cox  
Evelyn Irene Crawford  
Mary Ruth Crumbley  
Henry R. Dailey, Jr.  
John Bartlett Dalton  
Ralph Avery Davis, Jr.  
Marguard Earl Debardeleben  
Warren Howard DeFreese  
Harry Edward Denman  
Paul Columbus Debeck, Jr.  
Frances Elizabeth Digby  
Frank Gibson Doerr  
Charles Lewis Douglas  
George F. Dowman  
L. C. Duncan, Jr.  
Frederick Eugene Dunn, Jr.  
Mary Lou Durham  
Arthur Mahlon Easterlin  
Frances Kathryn Edwards  
Thomas Ardell Edwards, Jr.  
B. Whit Ellis  
Charles Mike English  
David Leslie English  
Ralph Eugene Enlow  
Margaret Virginia Ewing  
William Jack Ewing  
Mary Louise Fallaize  
Albert Richard Feldman  
Robert Howell Ferguson, Jr.  
Richard Herrick Ferriter  
Anne Garner Fitzgerald  
Renee Marie Fletcher  
Sam Edward Florence  
Herbert Flowers  
Doris Marjorie Forbes  
Edna Ruth Fortner  
Norman Frankel  
Clyde C. Freeman  
Glenn Herman Frick  
Carroll Townsend Fugitt  
Charles E. Furbie  
Jack Walker Fussell  
Laurie Ella Gantt  
Manuel Arturo Gaunaurd  
Robert Lee Gilbreath  
Edwin Glenn Gilbert, Jr.  
Benjamin Zenith Ginsberg  
Edythe Elga Gloer  
Daniel Mack Goodlin  
Leland Lamar Goodson  
Walter Brewer Griffith  
Patricia McDaniel Grow  
Thomas Eugene Gulley  
Helen Marie Hackney  
Ernest Roy Hackney  
Jack E. Hall  
Hugh Jack Hallman  
James Hampton  
James Houston Hardy  
Martha Burns Hargrove  
Francis Maxwell Harrell  
Ruby Othell Harrelson  
Evelyn Harris  
Robert Edwin Harrison

William C. Hatcher, Jr.  
Ruth Hawkins  
Harry Byron Heard  
Emily Ruth Heege  
Louis William Heintz  
Olivia Herren  
Susan Lucy Hickman  
Ernest Lee Hicks  
Thomas Jackson Hill, Jr.  
Mary Ann Holcombe  
Charles H. Holman  
Carl Hood, Jr.  
Joseph Claude Howard  
Oscar Thomas Howse, Jr.  
Ben H. Hudgins  
Scott Hudgins  
Harriet Hamilton Hudson  
Mrs. Beulah Fort Hunt  
Nancy Cynthia Hurley  
Laura Janette Hutcheson  
James Daniel Irwin  
David Irons  
Paul P. Jackson, Jr.  
John Bernard Jacobs  
John Sidney Johnson  
Arthur Budolph Jones  
Elmer Rudolph Kirby  
Frankie Kirkland  
Eugene Kirkman  
Evelyn Frances Lancaster  
Ralph Lathem  
Victor S. Leaf  
John Phil Lee  
Hiram D. Lester, Jr.  
Fred Levy  
Edward Smith Lindberg  
Howard Stephen Love  
Hardy Franklin Luke  
James Elliott McBride  
John Allen McChesney  
James Russell McClure  
Beth McConnell  
Muriel Louise McGriff  
Mary Jane McGuire  
Melburne O. McLendon  
James E. McMullen  
Phillip Wayne Maffett  
Dasie Doyle Martin  
Johnny Chris Matrangos  
Mary Edna Mauldin  
Frances Elizabeth Mayo  
Sidney Perry Mendel  
Joe Howes Merrill  
Charlotte Irene Miles  
Ernest L. Miller, Jr.  
Frances Virginia Miller  
Harold Whitefield Minor, Jr.  
Charley Fred Mitchell  
Mrs. Margaret L. Mitchell  
Floyd J. Moon  
Alva Lawrence Moore  
Jack Emerson Morris  
Jacquelin F. Morris  
William Aven Morris  
Jeanne Ann Mullen  
Evelyn Gertrude Murphy  
William Wrigley Murphy  
Harry Murray  
Martha Nalley  
David Rice Nash  
Charlotte A. Nelson

Pauline Elizabeth Nichols  
Mary G. Nix  
Thomas Hall Norman  
Fred H. O'Kelley, Jr.  
S. O. Quinn, Jr.  
Carl Edward Osteen  
Hugh Carl Owen  
Evelyn Peavy  
Linda Lee Perry  
Joseph Eugene Phillips  
Frances Marie Pinyan  
Elgin Hartland Price  
Henry Carlos Puckett  
Clyde Quigley  
Gwendolyn Brown Ragan  
Virgil Clyde Raines  
James Lamar Ray  
Sarah Ernestine Ray  
Mrs. Estelle Smith Rhodes  
James Welby Rich  
Clyde Merritt Richardson  
Jesse Mack Robinson  
Frederic Michael Rosemore  
Eugenia Marcelle Rouse  
Miriam Rouse  
James D'Orsey Rowe  
Wilhelm William Sachs  
Joshua Lake Sappington, Jr.  
William Jasper Satterfield  
Henry Weber Satterwhite  
Ruby L. Sellers  
James Aldrid Shannon  
Robert Adair Shaw, Jr.  
Jewel Blanche Shelnut  
James Gordon Shurbutt  
Robert Ellsworth Simmons  
William Stephen Simmons  
Dorothy Elizabeth Simpkins  
Robert Eugene Smith  
William Jack Smith  
Louis Daniel Specht, Jr.  
Norman George Statham  
William Edward Stewart  
William Arthur Stovall  
Elizabeth Mariona Stribling  
James Nolan Strickland  
David Cain Sudan  
Doris LaVerne Sullivan  
Jerry Joe Sullivan  
George Harrison Swilling  
William Ambrose Swindell, Jr.  
Charles David Thompson  
Lillian M. Upshaw  
Otis M. Usery  
William Paul Van Hoy  
Vincent Vincini  
Louise Christine Vousden  
James Montgomery Walker  
Doris Jane Wells  
Marvin I. Wender  
Walker White, Jr.  
Robert Daniel Whiteford  
Parks Edwin Williams, Jr.  
Roy Thomas Williams  
Wesley Benjamin Williams  
Kathryn Elizabeth Witt  
Nelle Marie Womack  
Robert Young  
Walter Glenn Young  
Homer Gidd Youngblood, Jr.

# SPECIAL CLASS

Marshall Asher  
Dr. W. H. Butler  
Florence Hanjaras  
Mrs. J. E. Mayo

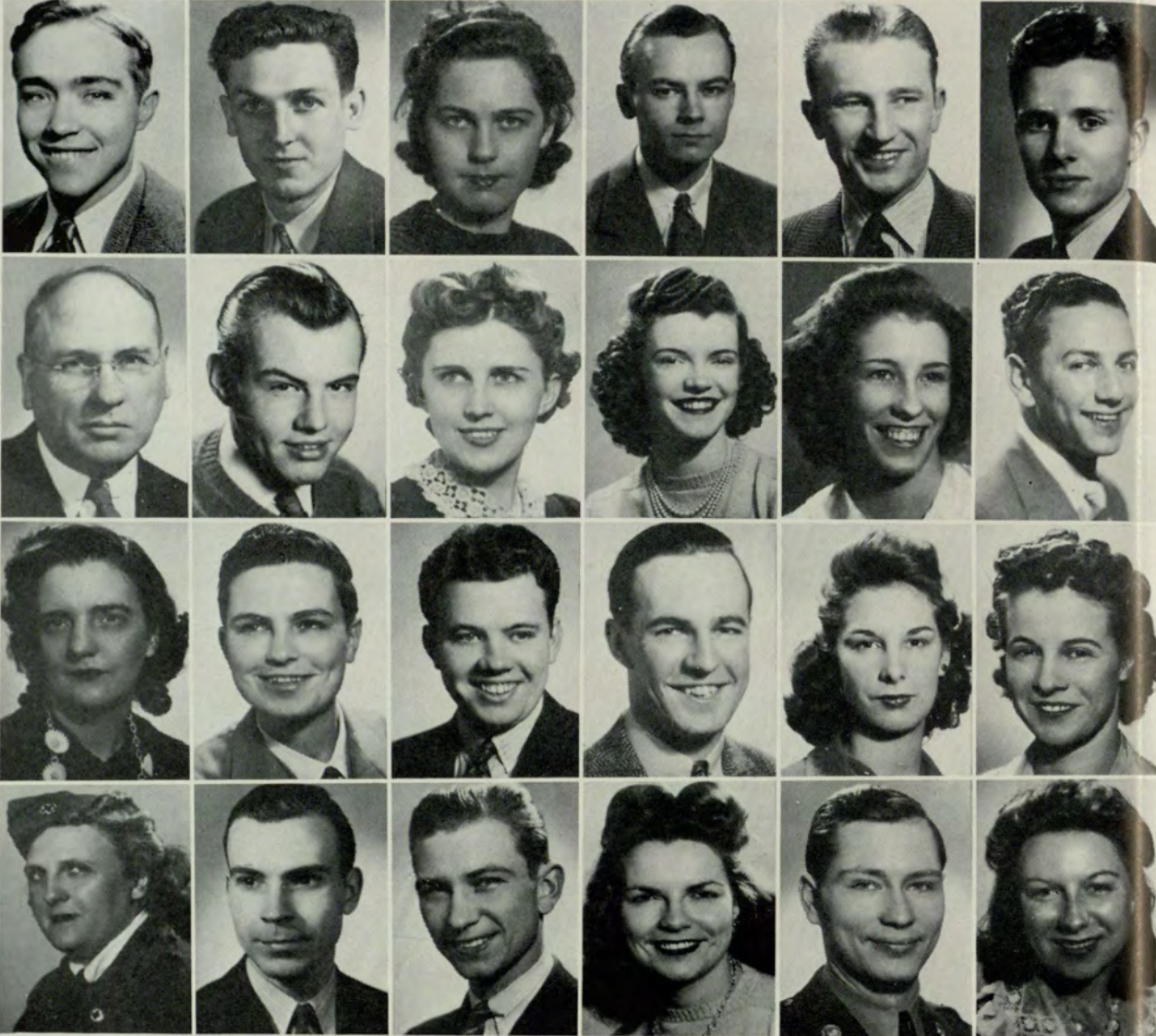
Paul Atherton  
Morgan DeFoor  
Paul Hickman  
Pierce Moore

Mary Barfield  
Lucille Demsey  
S. M. Johnson  
Robert Oliver

Charles Barron  
Ethel Fielder  
Bill Jordan  
Myrtle Seckinger

John A. Bips  
Lucille Fisher  
Della Malpasse  
Louis Specht, Jr.

Thomas Boone  
Harry Gernazian  
Lillian Manning  
Elizabeth Tatum



# SPECIAL CLASS

## Those Present and Accounted For - - - Fall and Winter 1941

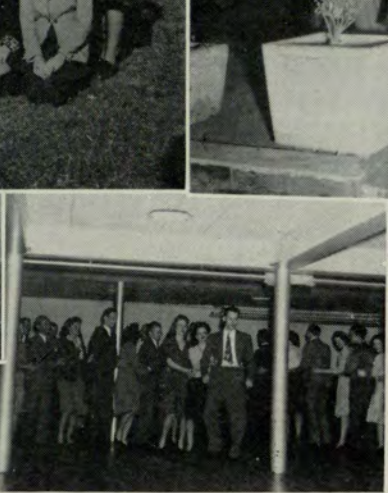
Roy Wilson Adams  
Elinche Adametz  
Martha Ann Akins  
John Hazel Alderman, Jr.  
Harry Blackwood Alderman  
Idella Rogers Allen  
Ralph Herman Allen  
Albert Monroe Allison  
Henry Grady Almand  
Henry Alman  
Glenn Pitts Amendola  
Marjorie Pitts Amendola  
Susan Elizabeth Ames  
Lila Amis  
Marion Athene Andrews  
Stanley Overton Andrews  
Georgia Angel  
Gwendolyn Anheir  
James Oscar Applewhite  
Elizabeth Arnold  
Hubert G. Arnold  
Ruth Ashe  
Carolyn Askew  
Mrs. Sally Powell Atkins  
Ben Harrison Atkinson  
Annie Grace Austin  
Betty Jeanne Aycock  
James Clyde Aycock  
John Aycock  
Thebert Grenoble Ayres  
Harold Lamar Baccus  
Clifford Ansel Baggett  
James W. Bailey  
Rose Geraldine Bailey  
Charles Otis Baird  
Elizabeth Means Baker  
George Edgar Baker, Jr.  
Malcolm Webb Baldwin  
James John Bandy  
Robert Lee Banks  
Mary Barfield  
James Garland Barnes  
Alice Eleanor Barrett  
Mrs. Ruth Barron  
Fred Anthony Barton  
Robert Leonard Barton  
Mrs. Edna Bearden Bass  
Walter Vernon Beasley  
Lamar B. Beckwith  
C. Ruth Bennett  
Lorraine Inez Bennett  
Lawrence Raymond Benton  
Frances Mary Berdelman  
Jack McDonald Berry  
John Anthony Bips  
Cecil Kendrick Black  
Mrs. Eva A. Black  
Mary Jayne Blackman  
Mary Helen Blackwood  
Beeler Grayson Blevins  
Anna Louise Boeckman  
Cornelia Inez Bolt  
George W. Bolton  
M. Jane Bolton  
Fred A. Bonner  
Thomas Edwin Boone  
Frances Elizabeth Booker  
Charles J. Bosshardt  
Emily Lou Boyd  
Marie Evelyn Boyd  
Charles Lee Brackett  
B. Ermeno Bradley  
Bejeune P. Bradley  
Galvin T. Bramblett  
Mrs. Elizabeth Ledbetter Branan  
Benjamin Hoyt Brinkley, Jr.  
Howell Gilmer Brock  
Mrs. Myrtis Hay Brock  
Sara Sue Brock  
George Howard Broodrick  
James Leon Brooks  
Mary Magdalene Brooks  
Weyman Ewell Brooks  
Frank Wilson Brown  
Mrs. Gladys R. Brown  
Harriet Brown  
Catherine Jeannette Brown  
Mrs. Josephine L. Brown  
Mildred Frances Brown  
Nell Sperry Brown  
Sadie Faith Brown  
Mary Charlotte Bruce

Mrs. Nina Vess Bryan  
Thomas Earle Bryant  
Harrison Kathleen Burke  
James Madison Burke  
Joseph Alfred Burton  
Wynn Burton  
Sarah Echols Bush  
Walter Hudson Butler  
Hans H. Butzon  
Nace A. Cadranal  
Mary Jean Callahan  
Eugenia Chandler Camp  
John Jefferson Camp  
Malcolm Murray Campbell  
Charles Austin Cannon  
Tina Mary Capossela  
Richard Albers Carpenter  
Marguerite Alice Carskadon  
Marie Elizabeth Carson  
Joseph Rodwell Carver  
William Frank Cash, Jr.  
John Ivy Catchings  
Charles O. Cates  
Samuel Truett Cathy  
Clara L. Caudell  
Harold Bedford Chadwick  
Fred Leroy Chaffin  
Dorothy Jean Chambers  
Helen Corn  
David Coleman Champion  
Thomas Warren Chandler  
Mrs. Rachel T. Chappell  
Edith Chesnut  
Gerald Franklin Childress  
Stewart Blake Chilton  
Eleanor Anderson Clark  
Gloria Ann Clark  
Rose Marie Clarke  
Wilburn Rucker Clarke  
Wallace M. Clayton  
Jean Bryant Cleveland  
Norma Lee Clinkinbeard  
Billy Clowdis  
Don James Coffee, Jr.  
J. W. Coffey  
Barbara Gertrude Cohnm  
Margaret Louise Collins  
Carolyn Tennie Collins  
George Wright Collins  
Grace Connelly  
Betty Vee Fay Converse  
Clarence Cook  
Tom Evins Cook  
Ann Copeland  
Harry N. Cordes  
Dorothy Edna Coreaux  
Allyn Lewis Corley  
Ann Cornwell  
James Albert Corwell  
Juanita Couch  
James Henry T. Couey, Jr.  
Ann Courtney  
Martha Ophelia Cowart  
Christine Grace Cox  
Hazel Lee Crane  
Mary Trowbridge Craft  
Morris C. Croft, Jr.  
Jack E. Crowder  
Annie May Crump  
Pat P. Cubine  
Whit S. Curbow, Jr.  
Martha Cecilia Curry  
Elmer Irving Darling  
Charles T. Darnell, Jr.  
Troy Marguis Dasher, Jr.  
William Cecil David  
Elizabeth Anne Davis  
George Marion Davis  
Kimsey W. Davis  
Ovid Raymond Davis  
Daniel Keith Day  
Morgan McNeel DeFoor  
Emily Deal  
Leon Alvin Dean  
Thomas C. Dean  
Joseph Cecil Delony  
Elsie Lucille Dempsey  
James Latimer Dendy  
William Gordon Denning  
Maureen Annie Denney  
George L. Denny

William Gordon Denning  
June Louise Denton  
Jackson Porter Dicks, Jr.  
Irene Miller Dickson  
Willie Gilbert Dobbins, Jr.  
William Keene Dobson  
Martha Dodd  
R. Cooper Dodson  
Nettie Mae Donald  
Roberta Jayne Donaldson  
Charles Earl Dorsey  
Grover Cleveland Doster, Jr.  
D. O'Connell Dougherty  
Robert Bruce Douglass  
Charles Pickett Dubois  
Eleanor Duffey  
Helen Elizabeth Duffy  
Jack Leonard Duncan  
Mrs. Mari Lynne Duncan  
Estes Dunham  
Virginia Arnold Durham  
Thelma Elizabeth Durrence  
Odell Thurman DuVall  
Mildred Eulalie Easley  
Raymond Eugene Easley  
Isabelle East  
Douglas Eavenson  
Charles William Echols  
Frances Elizabeth Edmondson  
Ross Irwin Edwards  
Preston David Ellington  
Sandra Marie Ellington  
Dixie P. Elliott  
Mrs. Lois McKnight Elliott  
George Randolph Elliott  
John Bowden Ellis  
Ann Embry  
Claire Enge  
Richard John Enlow  
George Ray Eubanks  
Clement Albert Evans  
Mary Mooney Everett  
Royce Fair  
Alfred Carey Faison  
Frances Florence Fechter  
Albert Parsons Feldman  
Jack N. Fender  
Joseph Benjamin Fennell  
Ruth Marie Fenger  
Dave Huie Ferrell, Jr.  
Ethel Morrison Fielder  
John James Fisher  
Lucille Fisher  
Francis M. Flewellen  
Harold Edward Flynn  
John Martin Forehand  
John Candler Forkner  
James R. L. Foster  
Jett Whatley Foster  
Inez Esta Fowler  
Louis Jennings Fowler  
Joe Richard Franklin  
William Farrow Fraser, Jr.  
Charles Ross Free  
Milton Oliver Freeman  
Carol Frink  
Harrison Lee Frozier, Jr.  
Barbara Louise Fullbright  
Frank Gabriel  
Beatrice Gaffchar  
Louise Myrtle Gagnon  
Beatrice Elizabeth Gallaher  
Charles S. Gallaher  
Edwin Galloway  
Regina June Gann  
C. Greene Garner  
Bernard Robert Gardner  
Fred Osmond Gearing  
Marjorie Grace Geoghagan  
P. L. Gerdine  
Leo Harry Gernazian  
Hugh M. Gibson  
Hoyt Ivey Giddings  
Eloise Gill  
Mary Jane Glenn  
Clarence Aaron Glover  
Camille Bianka Gowdin  
James H. Goldsmith  
Alex Goldstein  
Jacob H. Goldstein  
Goldie Goncher  
James Gordan Gould

Vernon Gould  
Leonard Richard Grace  
John Howell Green, Jr.  
Harriette Green  
T. Hugh Gresham  
James Woodie Grice  
John Spence Griffin  
H. Jeanne Griffith  
Mrs. Thelma Miller Griffith  
Guy Allen Groover  
Sidney V. Grose  
Luther Gordy Grubb  
L. K. Guymon  
Claude J. Haines  
Mary Armor Hale  
Mrs. Julia Hamilton  
Mary E. Hamme  
Jack Alton Hanes  
Richard Baldwin Hanes  
Florence Angelina Hanjaras  
John Henderson Harbin  
Morris Henderson Harbin  
James Carlton Hardeman  
Ralph N. Hardeman  
Nelle Erwin Hardy  
Harold Carter Harmon  
Hugh L. Harrell  
Dorothy Loretta Harrington  
James Hardy Harris  
Thomas Wayne Harris  
James Burren Harrison  
Lura Mae Harrison  
Harriet Elizabeth Hartwell  
Herschel R. Hawkins  
Buck Hay  
Jack Hubbard Head  
Laban Johnson Head, Jr.  
Nat S. Heath  
Mrs. Addye W. Hefner  
Leonard Melvin Hemperley  
Mary Ann Henderson  
Malcolm R. Henry  
Garland Durell Herring  
Grady Louis Herron  
Paul Roland Hickman  
Charlotte M. Hill  
Perrin Smith Hill  
Harry O'Neil Hoelscher  
Jack Firsner Hoffens  
Agnes Mae Hogue  
Betty Muriel Holland  
Henry A. Holland  
Jesse Hobart Holland  
Charles Gordon Hollingsworth  
Ralph Garmon Hollingsworth  
Catherine Holloway  
Eugenia Holston  
William Melvin Holt  
Helen Irene Holt  
Armand R. Honiker  
Carl Hood  
Oliver Sidney Hopkins  
Mirian Carolyn Horne  
Mrs. M. E. Houghens  
Marion Richardson Houston  
Floyd Webb Howard  
George R. Howell  
Venice Eula Huckabee  
Walter H. Huff  
Jack Huffman, Jr.  
Robert Lee Hughes  
James Willard Hughes  
Daniel Rayneford Hughes  
Alice Hull  
Marion Monroe Husley  
Joe Frank Humphries  
William Frederick Humphries, Jr.  
Elizabeth Hunt  
Helen Hunsinger  
Grady Milton Hunt  
James N. Hunt  
Mildred Beach Hutcheson  
M. Floy Hutcheson  
Lamar J. Hyde  
William Benjamin Hyde  
Elizabeth Read Irby  
Lova Vera M. Ivey  
Eleanor Jackson  
Florrie Mae Jackson  
Fred Ridley Jackson  
Lois Jackson  
Marian Jackson

(CONTINUED ON PAGE PRECEDING ADVERTISEMENTS)

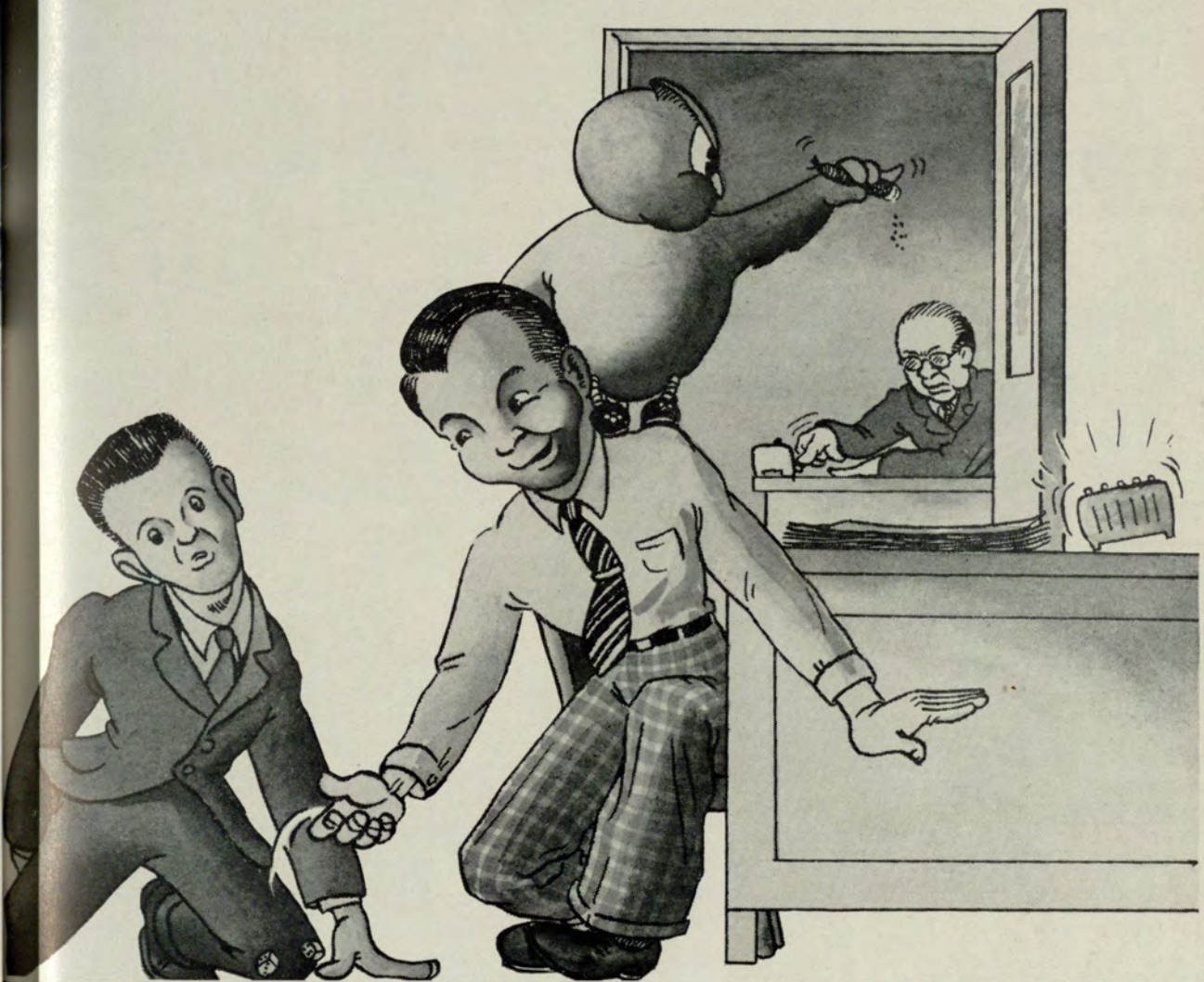


About the campus—Campbell holds hands, Billy jitterbugging, speed test, Joe and Myrt, Signal reader,

A. K. Psi's gather before classes, chrysanthemum girls, Fitzgerald bids Hogan good-bye, teacher laughs at own joke, Sunday dresses, Jan talks back to photographer, Conga line, Tom poses in sun, students go to library to make picture (leave immediately afterwards), North Jawjah, all-school meeting in refectory.



# ACTIVITIES



. . . partnerships . . .



# STUDENT COUNCIL

## OFFICERS

TOM LUCK.....*President*  
 JAN KELLER.....*Secretary*  
 DEWITT HUNT.....*Treasurer*

## EXECUTIVE COUNCIL

*Seniors*..... Ed Clark, Lois Dozier  
*Juniors*..... DeWitt Hunt, Bill DeLoach  
*Pre-Juniors*..... Jimmie McNabb, Sam Franklin  
*Sophomores*..... Jan Keller, Grady Banks  
*Freshmen*..... L. C. Duncan, Fred O'Kelley  
*Evening Signal*..... Lois Dozier, Ed Beckham  
*Nocturne*..... Louise Johnson, Joe Sullivan

## REPRESENTATIVES

Each class in the Evening College elects a representative to Council every quarter. These students attend Council semi-monthly meetings and help govern student body.



TOM LUCK  
President

ELIZABETH ALLEN  
MARSHALL ASHER

CHARLES BAILEY  
CONNIE BAILEY

JACK BALL  
GRADY BANKS

ED BECKHAM  
MELROSE BLACK

FRED BRANAN  
BOB BRANDES

CHARLIE BROOME  
HOGAN BUFORD



JUNE CANTRELL  
BARNEY CARNES  
ED CLARK  
LUCY COBB  
BOB DALE

BILL DeLOACH  
LOIS DOZIER  
L. C. DUNCAN  
HAROLD DUNCAN  
GEORGE EDWARDS

JOSEPHINE ELARBEE  
LARRY EVANS  
LUTHER FITZGERALD  
DON FLOYD  
SAM FRANKLIN

GLENN FRICK  
LOUIS GREENE  
LATRELLE HOFFMAN  
DeWITT HUNT  
LOUISE JOHNSON

HARRY JONES  
JAN KELLER  
ERLENE LOMINACK  
ANNA LYLE  
JIMMIE McNABB

CLAIRE MANNERS  
MARY LOUISE MERRIMAN  
MARTHA NALLEY  
FRED O'KELLEY  
ED PAFFORD

ELIZABETH RAMSDEN  
GEORGE SHELL  
JOE SULLIVAN  
BILL SUTTLES  
McCOY WHITE

# THE NOCTURNE



Mary Jane Baker



Ed Beckham  
Bill Marr



Bob Brandes  
Martha Nalley



Hogan Buford  
Ruby Sellers



Bill DeLoach  
David Stripling



Rosemary Hughes



## ASSISTANTS



DOROTHY COREAUX  
JAN KELLER



### STAFF

- LOUISE JOHNSON . . . . . *Editor*
- JOE SULLIVAN . . . . . *Business Manager*
- BOB DALE . . . . . *Associate Business Manager*
- DAVID NASH . . . . . *Art*
- DOROTHY COREAUX . . . . . *Publicity*
- JAN KELLER . . . . . *Snap-Shots*
- BILL LAYTON . . . . . *Director of Publications*



BILL LAYTON  
DAVID NASH





BOB DALE  
Associate Business Manager



LOUISE JOHNSON  
Editor



JOE SULLIVAN  
Business Manager

After Harold Tabor went away to the Army and George Pope had to leave school temporarily, the job of putting out a war-time annual was given over to Louise Johnson and Joe Sullivan. Then duty called again—and Joe entered the Navy. But a kind fate had left Bob Dale to get the ads and manage the other business. Through his diligence and patience, the annual, instead of suffering, received twice the advertisements believed possible. By making the 1942 NOCTURNE streamlined due to the shortage of paper and time, the staff was able to give it away instead of selling it, as in previous years.

Some of the Nocturne staff working late at night to get lists and copy typed. (Things were not usually this orderly.)



# EVENING SIGNAL



LOIS DOZIER



PAUL ATHERTON



ED BECKHAM



"The Evening Signal"

The aim of *The Signal* is to reflect the spirit of G. E. C. In 1941-1942 Editor Dozier brought up the standards of the paper by increased use of pictures of student activities and efforts to bring into the limelight students other than those connected with organizations.



WILLIAM P. LAYTON

STAFF

LOIS DOZIER ..... *Editor*  
 PAUL ATHERTON ..... *Associate Editor*  
 ED BECKHAM ..... *Business Manager*  
 LOUISE JOHNSON ..... *Feature Editor*  
 JEANNETTE DOZIER ..... *Society Editor*  
 G. L. THOMAS ..... *Sports Editor*  
 JEANNE JOHNSON ..... *Fashion Editor*  
 DOROTHY STRANGE ..... *Exchange Editor*  
 BOB GARNER ..... *Circulation Manager*

EDITORIAL ASSISTANTS

Anne Fitzgerald, Beth Rogers, Connie Bailey,  
 Mimi Capdevielle.

ADVERTISING ASSISTANTS

John Bips, Anne Fitzgerald, Louise Johnson.

REPORTERS

Bob Farrar, Emily Gregory, Josephine Elarbee,  
 Jan Keller, Rosemary Hughes, Elizabeth Ramsden,  
 Vivian Clowdis, Miriam Rouse, Ruby Sellers,  
 George Shell, Frank Cloudt, Elizabeth Allen.

WILLIAM P. LAYTON ..... *Director of Publications*  
 DR. JAMES E. ROUTH and DR. GEORGE M. SPARKS  
*Faculty Advisors*



At Top—Lois looks over copy for the next edition.  
 Bottom—Proofreading in Layton's office.



Jeannette Dozier



Bob Garner



Jeanne Johnson



Louise Johnson



Dorothy Strange



G. L. Thomas

# INTERFRATERNITY COUNCIL

## OFFICERS

AL KUETTNER.....President  
 JEANNE JOHNSON.....Vice-President  
 GENEVIEVE MURRELLE.....Secretary-Treasurer

## Representatives

**ALPHA KAPPA PSI**  
 Jack Ball  
 George Edwards

**DELTA LAMBDA SIGMA**  
 Mary Jane Turner  
 Caroline Reid

**DELTA SIGMA PI**  
 Ford Rives  
 Tom Luck

**PHI CHI THETA**  
 Lena Ruth Lawrence  
 Ruth Isakson  
 Inez Kitchens

**DELTA KAPPA**  
 Frank Cloudt  
 Neal Crawford

**KAPPA THETA**  
 Erlene Lominack  
 Evelyn Mathis



"I so move"

**VENETIANS**  
 Harold Duncan  
 Sam Franklin



AL KUETTNER  
 President

The Inter-Fraternity members are representatives of seven member organizations who meet bi-monthly and seek a closer harmony between sororities, fraternities, and other groups in the School. The Council grants meeting and social dates, and controls pledging activities of organizations.



JACK BALL  
FRANK CLOUDT  
NEAL CRAWFORD



HAROLD DUNCAN  
GEORGE EDWARDS  
SAM FRANKLIN

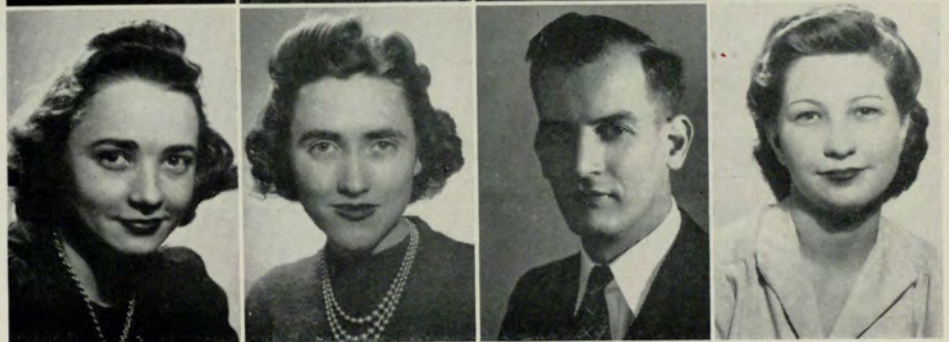


RUTH ISAKSON  
JEANNE JOHNSON  
INEZ KITCHENS

LENA RUTH LAWRENCE  
ERLENE LOMINACK  
TOM LUCK  
EVELYN MATHIS



GENEVIEVE MURRELLE  
CAROLINE REID  
FORD RIVES  
MARY JANE TURNER



# DELTA MU DELTA

## OFFICERS

EDWIN CLARK .....	<i>President</i>
EMILY ROBERTS .....	<i>Secretary</i>
JAMES DAVIS .....	<i>Vice-President</i>
FIDELES KLOECKLER .....	<i>Treasurer</i>

## ROLL

1941		
Elizabeth Allen William Bromberg Edna Payne Cooper	Lois Dozier Harold Duncan William Rogers Hammond	Claire Manners Worth P. O'Dell Elizabeth Ramsden
1940		
Hans Butzon Miriam Clarke Fideles Kloeckler Sara Frances Ramsey	Kay Tabor Mrs. Kate Taylor Emily Roberts	James T. Wiley, Jr. Ernest Wright Edwin Clark
1939		
Catherine Baker Timothy Bullard Maymi Walker Chandler James Davis	H. Talmadge Dobbs Pickett Hynes James H. McGuire Ordry Palmer	H. Mae Tankersley D. Rebecca Williams Harold Willingham
1938		
Elizabeth Adams E. W. Aldredge Albert P. Clark	Alice S. Downing Mary Hammond Robert C. Lowe, Jr.	Thomas A. Seals H. Earl Strying M. Christine Wing
1937		
Marcia Baker Clarence H. Hill Ewell Y. Jackson	Robert Kimsey T. M. McClellan C. Ed Martin	Ben Overstreet, Jr. Helen Tucker Thompson R. Durwin White
1936		
E. J. Barber Tallulah Davis Lloyd C. Ginn	A. D. Gregory, Jr. Hilda Isakson Jackson Robert Johann	Susie Sudderth George Wing
1935		
Lamar G. Baker Reuben G. Crimm Elizabeth Curtis Dexter	Francis M. Osteen Maurice Strickland	Robert Strickland Ted J. Whitehead
1934		
Mildred Chesnut Brown Francis Duggan	J. W. Goldsmith M. D. Harper, Jr.	George Manners Antha Mulkey
1933		
F. C. Brandes N. E. Boswell	Catherine Martin Duggan	B. F. Wells, Jr.
1932		
T. W. Duncan Margaret Lloyd	J. Harry Gault	Ruth Rogers
1931		
Fae Allen W. W. Aycock E. H. Bishop Mary Cheatam Buchholz L. C. Evans Richard A. Hills John Janoulis	C. Roy McCormack H. C. Kitchens George E. Parker Norman E. Pettis John M. Reed, Jr. H. L. Robinson	C. S. Spinks Bernard Suttles, Jr. M. Guy Swanson M. W. Swint C. Z. Zellar J. W. Zuber, Jr.



# THETA CHAPTER



EMILY ROBERTS  
Secretary



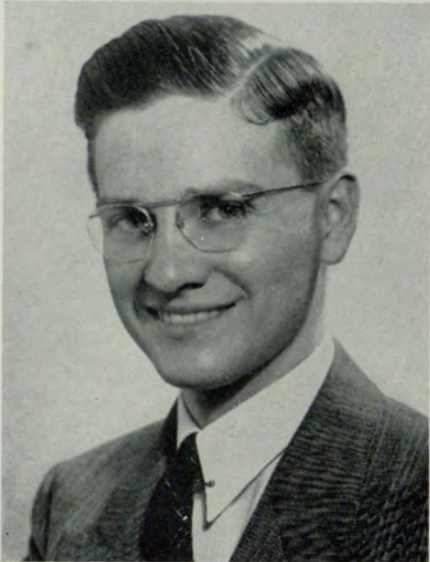
ED CLARK  
President

Since the installation of the Theta Chapter, June 9, 1931, Delta Mu Delta has done much to promote a higher standard of scholarship in the Evening College. This fraternity is to promote "higher scholarship in subjects set forth in the curriculum of the Evening College; to stimulate interest in the advancement of scholarly ideals; and to recognize and reward scholastic attainment in the studies as set forth above."

Through the Delta Mu Delta Honor Roll, published annually, the records of students of outstanding scholastic rating are acknowledged.

The election of members, selected from graduating Seniors, together with two undergraduates, honors those students who have successfully passed the rigid requirements for this, the only national scholarship fraternity in the Evening College.

# INTRAMURAL KEY



FRED WINDHAM  
President

## OFFICERS

FRED WINDHAM	President
IRA ABERNATHY	Vice-President
BILL SUTTLES	Secretary
BILL DELOACH	Treasurer

## AIMS OF INTRAMURAL KEY

—a closer understanding and cooperative spirit among students, and between the student body and school administration.

—an aspiration for greater intellectual achievement.

—a study of student problems to the end that all student life may be enriched, and the progress and best interests of the GEORGIA EVENING COLLEGE be stimulated and promoted.

Duncan, DeLoach and Clark cook up orientation program to end all orientation programs.





Ira Abernathy  
Roger Dozier

Morris Amato  
Harold Duncan

Ed Clark  
Jimmie Laxson

Bill DeLoach  
Warren McClam

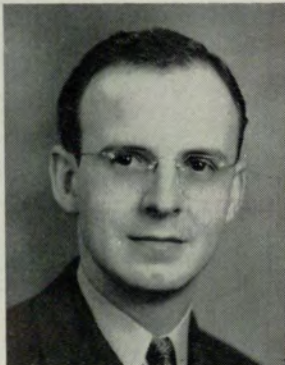
Chosen for all-around ability in scholastic and social lines, these boys seek cooperation between new men students and teachers.

Homer Merrill

Ford Rives

Ralph Saye

Bill Suttles



# CRIMSON KEY

Crimson Key was founded at GEORGIA EVENING COLLEGE in January, 1934. The purpose is to promote a closer understanding between Evening College students and the administration and to cooperate with faculty and organizations in the interest of scholarship, social activities, and moral ideals.



ELIZABETH ALLEN  
PAULINE BERRY  
FLORENCE CAMP  
MILDRED CHRISTA  
LOIS DOZIER



ANNABELLE HENRY  
JEANNE JOHNSON  
INEZ KITCHENS  
LENA RUTH LAWRENCE  
ERLENE LOMINACK



NELLIE MARET  
GENEVIEVE MURRELL  
ELIZABETH RAMSDSELL  
CAROLINE REID  
DONNA ROBERTS



EMILY ROBERTS  
BETH ROGERS  
LOUISE SOWELL  
DOROTHY STRANG  
JULIETTE TODD

. . . closer bond sought . . .



Crimson Key entertains new women students at one of their many suppers—held in the refectory.



Crimson Key girls eye camera and faculty eyes food.



President—  
CLAIRE MANNERS

#### OFFICERS

- CLAIRE MANNERS ..... *President*  
 LOUISE SOWELL ..... *Vice-President*  
 JULIETTE TODD ..... *Secretary*  
 ERLENE LOMINACK ..... *Treasurer*

# ALPHA KAPPA PSI



Meditation



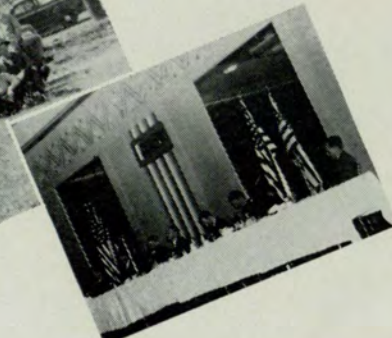
Gathering at the Howells'



Jan and George



Station wagon crowd



Party manners



AL KUETTNER  
President

## Fraternity Song

1

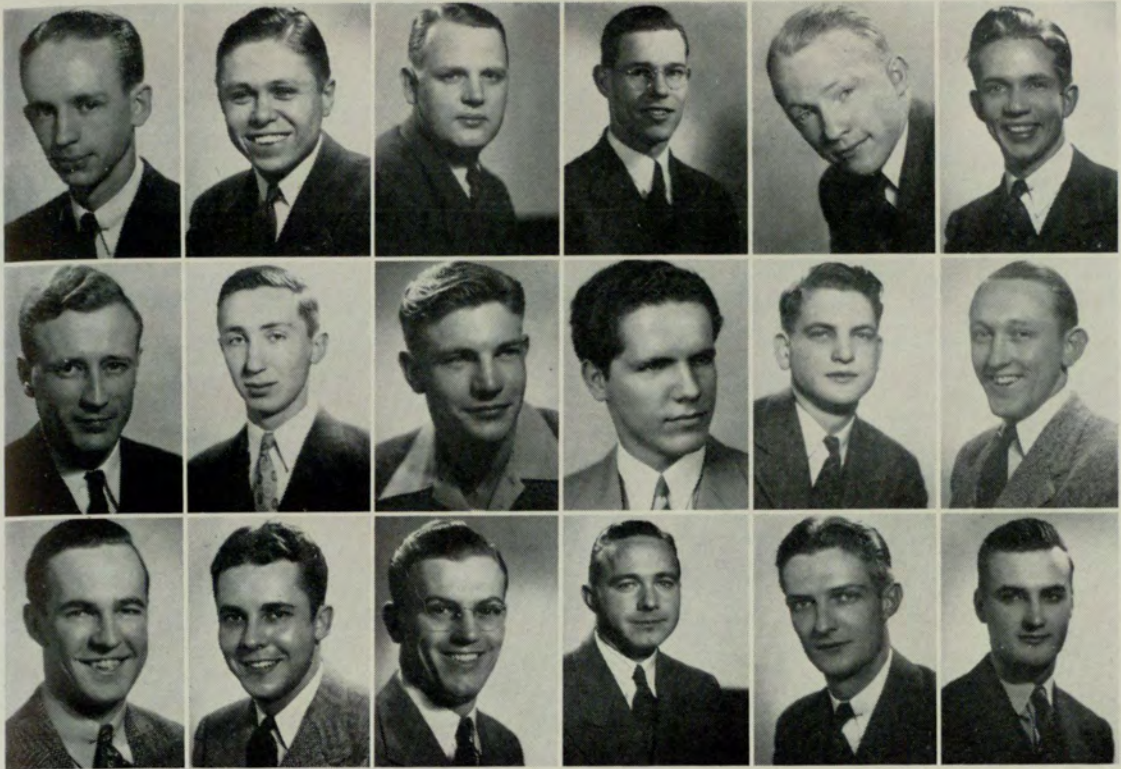
*Should auld acquaintance be  
forgot  
And Alpha Kappa Psi?  
Shall we pass slowly out of view  
Without regret or sigh?*

2

*We'll work with might and main  
to win  
Our mead of daily praise—  
And ne'er shall we in later years  
Forget fraternal days.*

CHORUS

*For Alpha Kappa Psi, my boy—  
For Alpha Kappa Psi—  
We'll bless the days that we have  
spent  
In Alpha Kappa Psi.*



Charles Bailey  
Sam Franklin  
Bill Jordan

Jack Ball  
Walter Freeman  
Jan Keller

R. C. Brewer  
Hugh Hallman  
Cecil Pool

David Cason  
Maxwell Harrell  
Ralph Saye

Pat Cooke  
Billy Hatcher  
Henry Sharp

George Edwards  
DeWitt Hunt  
Bob Simmons



Bill Suttles  
Harold Tabor  
Bill Thomas

Ben Tuck  
T. J. Weatherly  
Virgil Zink

Marshall Asher  
Luther Burroughs  
Roger Dozier  
Bob Hames  
John McChesney  
Jesse Roach

Grady Banks  
Ed Clark  
Harold Duncan  
Frank Hamilton  
Jimmie McNabb  
George Shell

Ed Beckham  
Howard Clark  
L. C. Duncan  
Frank Inman  
George Manners  
Buster Stewart

Fred Branam  
Bob Dale  
David English  
Emory Johnston  
Buck Minor  
Joe Sullivan

Bob Brandes  
Howard DeFreese  
Larry Evans  
Emory Kinard  
Ted O'Callaghan  
James Welch

Charles Broome  
Bill DeLoach  
H. E. Dennison  
Tom Luck  
Ed Pafford  
McCoy White

Hogan Buford  
Pat Dobbins  
Louis Green  
Bill Moore  
Ben Perry  
Fred Windham



... well sinks to all-time low ...



# DELTA SIGMA PI



Deltasig Lodge in mid-winter . . . Stag week-end . . . Snake Rives . . . Valentine Dance . . . putting up the flagpole in front of the lodge.

## *“Yours Fraternally”*

*Delta Sigma Pi!*  
*Delta Sigma Pi!*  
 What a meaning hath its name;  
 For it signifies  
 Every man would die  
 To uphold its rights and fame;  
 For we'll help one another—  
 We'll call each one a brother.  
 It's the spirit—  
 Yours fraternally,  
 In Delta Sigma Pi.



FORD RIVES  
 Headmaster

# DELTA KAPPA

## OFFICERS

BILL BORDEN ..... *Governor*  
BUD MCKINLEY ..... *Lieutenant Governor*  
NEAL CRAWFORD ..... *Master of Rituals*  
CHESTER PERRYMAN ..... *Treasurer*  
FRANK CLOUDT ..... *Secretary*



BILL BORDEN  
Governor

Delta Kappa Fraternity was founded March 13, 1935, with blue and gold for the colors and the rose for the fraternity flower.

The purpose of Delta Kappa is to promote a close relationship among men, a better understanding between them as gentlemen and particularly brothers; to encourage a high code of moral conduct, constructive and ambitious activity, and to fulfill the ideals as set forth for each member of the Delta Kappa Fraternity.

CHARLES BARRON



FRANK CLOUDT



NEAL CRAWFORD



TOM FARRAR



CHESTER PERRYMAN

**Other members**—Bud McKinley, Otis Childs, Bob Winfree, Tom Nalley, Joel Turner, James Welch, Arthur French, Stanley Bowden, Howard Allison, Tilden Brooks, John Cash, Ed Kilpatrick, O. C. Puckett, Macon Worthen, B. Beine, B. Cloud, F. Scarborough, B. Wehunt, C. Darby, K. Peckham, B. Guerin and M. Alspaugh.

Although the Delta Kappa Fraternity has lost more than its share of boys to the army, to jobs in other towns, and to wives, the remaining boys have shown ability to keep alive the Delta Kap spirit at Evening College.

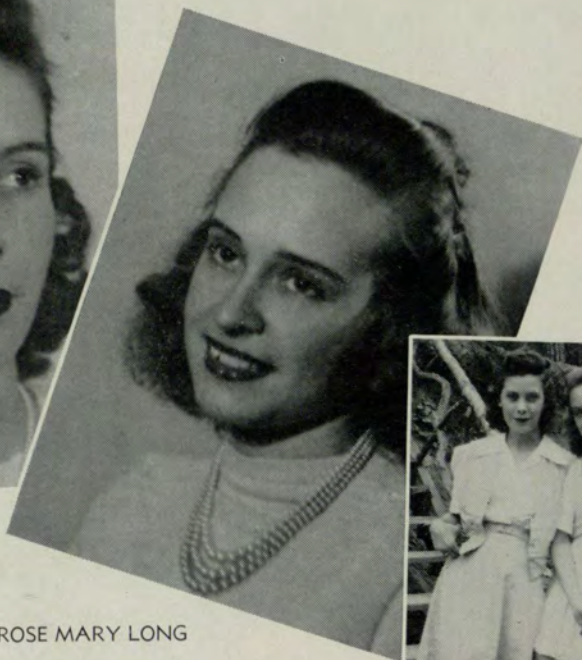
# VENETIAN SOCIETY

## OFFICERS

HAROLD DUNCAN	.....	<i>President</i>
SAM FRANKLIN	.....	<i>First Vice-President</i>
TOM LUCK	.....	<i>Second Vice-President</i>
HOGAN BUFORD	.....	<i>Secretary</i>
MCCOY WHITE	.....	<i>Treasurer</i>
BOB GARNER	.....	<i>Historian</i>



MARTHA PARRIS



ROSE MARY LONG



## Sponsors

According to tradition, Venetians take bottles of buttermilk at the early morning hour of 5:00 o'clock to the girls who are lucky enough to be their dates for the annual Buttermilk Ball. This is the official invitation. In 1942 Daisy Mae created a sensation by appearing in a long flannel nightgown with hair in braids.

The Ball was held at Peachtree Gardens with much success in '42. Prizes went to Charlie Broome and Bill Lozier (dressed as a cow, giving real buttermilk), Martha Nalley (old-fashioned costume), and Carl Osteen (Chinese costume). Osteen is a tradition, always wins a prize.



Harold Duncan



Sam Franklin



Tom Luck



Hogan Buford



McCoy White

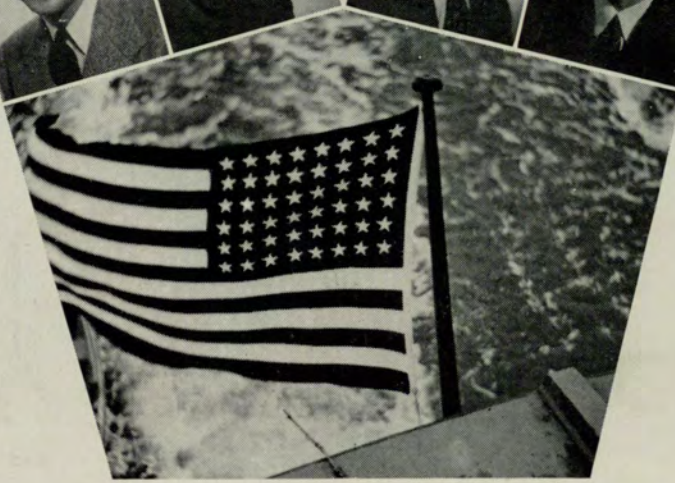


Bob Garner

... buttermilk soars ...

IN SERVICE

WARREN BLACKMON  
 HARRY CANTRELL    CURTIS COOPER  
 HUGO FRANZ  
 PAUL OTWELL    BRITT SANDERS  
 HAROLD TABOR    ERNEST BOLEN



First Row—  
 JACK BALL  
 TED BYERS

First Row—  
 AL KUETTNER  
 BILL LAYTON

Second Row—  
 R. A. CHRISTOPHER  
 ED CLARK

Second Row—  
 JIMMIE McNABB  
 T. M. McCLELLAN

Third Row—  
 L. C. DUNCAN  
 GEORGE EDWARDS

Third Row—  
 BILL MARR  
 ED PAFFORD

Fourth Row—  
 JOE HARRELL, JR.  
 BILL JACOBS

Fourth Row—  
 CECIL POOL  
 RALPH SAYE

Fifth Row—  
 JAN KELLER  
 EMORY KINARD

Fifth Row—  
 HAROLD TABOR  
 BEN TUCK

. . . Hogan misses out in last call . . .

# PHI CHI THETA



PAULINE BERRY  
FLORENCE CAMP  
LOIS DOZIER



ANNABELLE HENRY  
RUTH ISAKSON  
INEZ KITCHENS



MADGE MOORE  
ANN MURPHY  
GENEVIEVE MURRELLE

President  
LENA RUTH LAWRENCE



ELIZABETH RAMSDEN  
CAROLINE REID



THELMA SORROW  
DOROTHY STRANGE



# UPSILON CHAPTER

Upsilon Chapter was founded in Chicago, Illinois, on June 16, 1924. The colors chosen were lavender and gold, and the flower, the lavender iris. The publication was named "The Iris."

Phi Chi Theta at all times carries out the organization's purpose: to promote the cause of higher business education and training for all women, to foster high ideals for women in business careers, and to encourage fraternity and cooperation among women preparing for such careers.

## OFFICERS

- LENA RUTH LAWRENCE.....*President*  
GENEVIEVE MURRELLE.....*Vice-President*  
EDNA CAWTHON McGRATH.....*Recording Secretary*  
RUTH ISAKSON.....*Corresponding Secretary*  
INEZ KITCHENS.....*Treasurer*  
ELIZABETH RAMSDEN.....*Grand Councillor*



Who done it?



Ramsden and seasick pledge.



Elizabeth Allen, Ethelyn Cantrell, Martha Cason, Vivian Clowdis, Evelyn Crawford, Marjorie Dean, Jeannette Dozier, Lois Dozier, Josephine Elarbee, Anne Fitzgerald, Vadie Fleming, Ruth Fortner, Pat Head, Virginia Hemrick, Rosemary Hughes, Jeanne Johnson, Louise Johnson, Claire Manners, Mary Louise Merriman, Madge Moore, Emma Lou Moss, Genevieve Murrelle, Nelle Rustin, Thelma Sorrow, Dorothy Strange, Carolyn Todd, Mary Jane Turner, Betty Williams.

## Sorority Song

BY ETHELYN CANTRELL—1940

*That we may nobler, richer grow  
 In concepts of the mind—  
 That we may lend to all we know  
 A grace entirely thine.*

*That we may to each other show  
 A friendship never ending,  
 We dedicate ourselves to thee—  
 Our Delta, Lambda Sigma*

. . . Jordan retains soul ownership . . .



# DELTA LAMBDA SIGMA

## OFFICERS

- CAROLINE REID ..... *President*  
 MADGE MOORE ..... *Vice-President*  
 JEANNE JOHNSON ..... *Treasurer*  
 VADIE FLEMING ..... *Assistant Treasurer*  
 MARJORIE DEAN ..... *Corresponding Secretary*  
 LOUISE JOHNSON ..... *Recording Secretary*  
 ELIZABETH ALLEN ..... *Sergeant-at-Arms*



CAROLINE REID  
President

Madge and pledge



"Sustas"

The house party—oh, man!



Surprised at gossip



. . . hen parties on the rise . . .

# KAPPA THETA



ERLENE LOMINACK  
President

## OFFICERS

- ERLENE LOMINACK.....*President*  
 SARA COCHRAN.....*First Vice-President*  
 EVELYN MATHIS.....*Second Vice-President*  
 MATILDA IVEY.....*Corresponding Secretary*  
 DORIS SULLIVAN.....*Recording Secretary*  
 MELROSE BLACK.....*Treasurer*

- ALLIE BARNES  
 MELROSE BLACK  
 SARA COCHRAN



- KATHRYN COFER  
 LATRELLE HOFFMAN  
 RUTH ISAKSON



- MATILDA IVEY  
 MARY LASSITER  
 SARA McDANIEL





EVELYN MATHIS  
 ELIZABETH RAMSDEN  
 LOUISE SOWELL  
 DORIS SULLIVAN

LENA WAGON  
 ANNE WALKER  
 HARRIET WILLIAMS  
 JUNE WILSON

Kappa Theta was founded at GEORGIA EVENING COLLEGE January 24, 1937, for the purpose of aiming as a sisterhood and as individuals to strengthen social ideals in their highest level, to secure the fullest in understanding and to enjoy the finest in fellowship.

Their last  
 summer of  
 freedom



Sidewalk snoopers



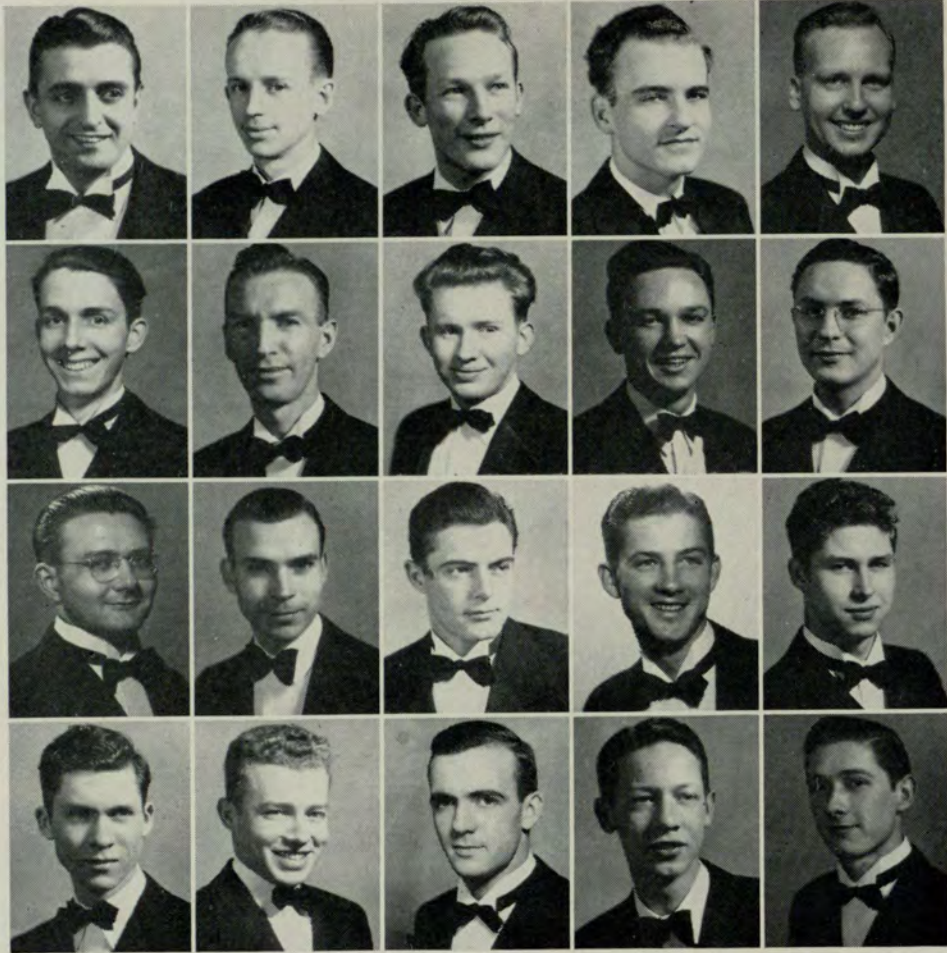
No enemy subs  
 in sight



House party at  
 Cherokee Lodge.  
 Evening scholars,  
 unused to sunlight,  
 squint at camera



# GLEE CLUB



Morris Amato  
John Bowling  
Wilfred Lacey  
John Singleton

Charles Bailey  
Wesley Briscoe  
Pierce Moore  
B. W. Smith

Sam Benedict  
Frank Cloudt  
James Newberry  
Bill Thomas

Vic Bernhardt  
Jack Hoffman  
Fred O'Kelley  
Walker White

Raymond Bissinger  
Eugene Kirkman  
James Singleton  
Robert Young

## GLEE CLUB MEMBERS

GLORIA ALLGOOD  
MORRIS AMATO  
C. H. BAILEY  
BEN BEALL  
RUTH BEALL  
VIC BERNHARDT  
CECIL BLACK  
KATHRYN BLACK  
JOHN BOWLING  
MARY CHARLOTTE BRUCE  
MRS. RAYMOND BROWN  
RAYMOND BISSINGER  
PIERCE WESLEY BRISCOE  
KATHLEEN BURKE  
EARL CAIN  
JANIE B. CHASE  
FRANK CLOUDT  
DOROTHY COREAUX  
AL CORLEY  
DURANT COUCH  
MRS. R. H. DOMINICK  
DOROTHY DURLING  
P. L. GERDINE  
REBECCA GERDINE  
IVEY GIDDINGS  
RUTH GOLDEN  
VERNON GOULD  
DOROTHY HARRISON

DONALD A. HAWKINS  
JACK B. HOFFMAN  
KATE JAMES  
JEANNE JOHNSON  
BERTHA JONES  
EUGENE KIRKMAN  
BETTY LAMONS  
WILFRED LACEY  
PIERCE MOORE  
MARCIA MALONE  
MARY MAULDIN  
FRANCES MAYO  
ROMA MAYO  
JEAN MCKANNY  
BETH MCCONNELL  
MARY JANE MCGUIRE  
ELIZABETH McDONALD  
ANNIE MESLOSKI  
CHARLOTTE METHVIN  
B. D. MITCHELL  
HAROLD MINOR  
MADGE MOORE  
JAMES W. NEWBERRY  
MARTHA NIBBACK  
BILL NICHOLS  
F. H. O'KELLEY

ROBERT OLIVER  
JANE PALMER  
MARTHA PATTERSON  
FRANCES PECK  
J. I. PITTMAN  
JULIAN RAWLINGS  
DONNA ROBERTS  
EVERETT ROBERTS  
FRANCES ROBERTS  
NEIL ROBERTS  
BERNEVA RUSH  
ANNIE RUTH SIMPSON  
JAMES SINGLETON  
JOHN SINGLETON  
MARY SINGLETON  
RUBY STRICKLAND  
VIRGINIA SIMS  
MAX THOMASON  
LYDIA TOMASETTI  
MILDRED TRUSSELL  
JAMES C. WHITE  
WALKER WHITE, JR.  
BILL WYATT  
EVIE WARLICK  
GEORGE WILKES  
OUIDA WILLIS  
JIMMY WITHERINGTON  
BOB YOUNG

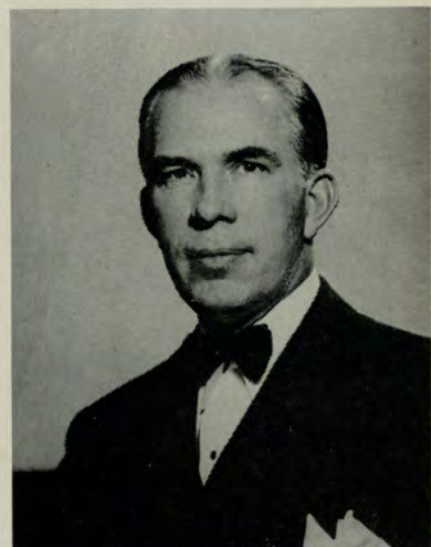
### OFFICERS

EMORY BELL..... *President*  
B. W. SMITH..... *Vice-President*  
BILL THOMAS.... *Secretary-Treasurer*  
SAM BENEICT..... *Historian*  
CHARLES SNOW..... *Librarian*



The girls' chorus of the Glee Club rendered music impressive and beautiful in "The Desert Song." The operetta was one annually presented by the Evening College Glee Club and sponsored by the Atlanta Optimist Club. It was held at the Erlanger Theater on May 7, 8, 9, 1942.

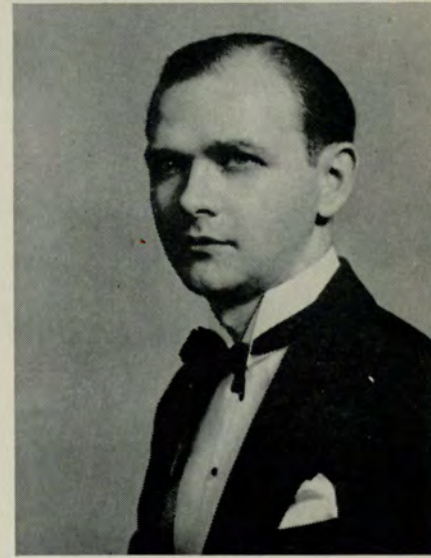
PROF. JOHN D. HOFFMAN  
Director



Prof. Hoffman giving last-minute instructions to Walter Cassel and Hazel Poss before "The Desert Song" while other leading members of the cast look on for pointers.



EMORY BELL  
President

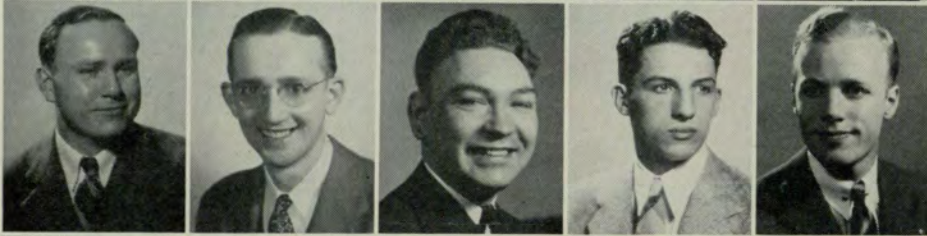


# SPEAKERS CLUB

The Speakers' Club was founded at the University System of Georgia Evening College, January 26, 1932, for the purpose of serving the school and better fitting the Speakers' Club members for successful life work; by promoting interest in public speaking among its members; by affording those already interested in public speaking an opportunity to improve their abilities; by encouraging participation in inter-collegiate debating; and, as a result, furthering the development of a high standard of education.



IRA ABERNATHY  
 REINALDO ABREU  
 PAUL ATHERTON  
 GRADY BANKS  
 ED BECKHAM



BOB BRANDES  
 HOGAN BUFORD  
 LUTHER BURROUGHS  
 ROBERT CHILDS  
 ED CLARK



HOWARD CLARK  
 BOB DALE  
 BOB DALTON  
 BILL DeLOACH  
 JIM DILLARD



HAROLD DUNCAN  
 L. C. DUNCAN  
 GEORGE EDWARDS  
 DAVID ENGLISH  
 LARRY EVANS



HARRY GERNAZIAN  
 BOB HAMES  
 ROBERT HOLDER  
 AL KUETTNER  
 JIMMIE LAXSON



ED LINDBERG  
TOM LUCK  
WARREN McCLAM

JIMMIE McNABB  
BILL MARR  
HOMER MERRILL

JAMES NICHOLSON  
ED PAFFORD  
FORD RIVES

BILL SUTTLES  
CECIL TURNER  
JAMES WELCH



FRED BRANAM  
President

OFFICERS

- FRED BRANAM . . . . . *President*
- BOB DALTON . . . . . *Vice-President*
- BOB DALE . . . . . *Secretary*
- REINALDO ABREU . . . . . *Treasurer*



Homer monopolizes conversation

Before the tire shortage

Stag party in the mountains—  
all the advantages of home and  
some not found at home.

. . . ko preferred—it says here . . .

# SPUR CLUB

Spur Club members' love of the outdoors is evidenced by the frequency with which the club meets. Summer or winter, early or late—whenever a member feels the urge to ride—there we have a meeting!

On a recent house party in the mountains of North Georgia, late sleepers were shocked to see Hiram, Vadie, Virginia and some of the others start out on the trail *before breakfast*—after having stayed up the night before until usual house party hours. This is the real Spur Club!



Hanging over the rail.

Before the chase.

Lady Godiva and escorts.





GRADY BANKS  
 HAROLD DUNCAN  
 VADIE FLEMING



VIRGINIA HEMRICK  
 BOB HOLDER  
 BILL LOZIER



CLAIRE MANNERS  
 ELIZABETH RAMSDEN  
 BEN TUCK



President of the '41-'42 Spur Club, India Upchurch stands with Archie Baird, former active member. India was not in school this quarter but has done a fine job as president of the organization.

# PLAYCRAFTERS



PAUL  
ATHERTON

RAWLEIGH  
BRYANS

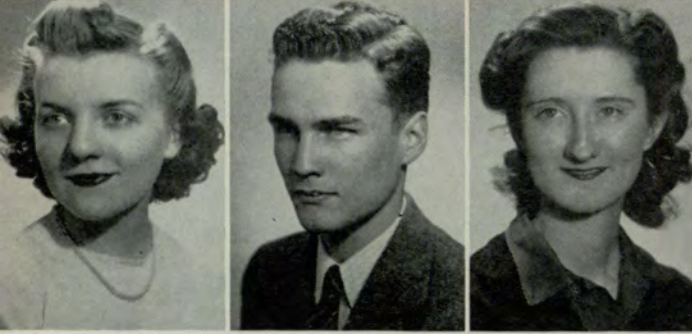
MARTHA  
CASON



TOM  
CONNELL

JEANETTE  
DOZIER

JOSEPHINE  
ELARBEE



ANNE  
FITZGERALD

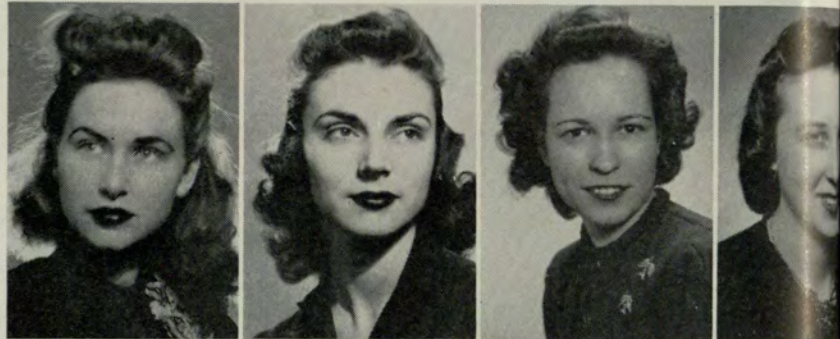
CHARLES  
McCLURE

MURIEL  
McGRIFF

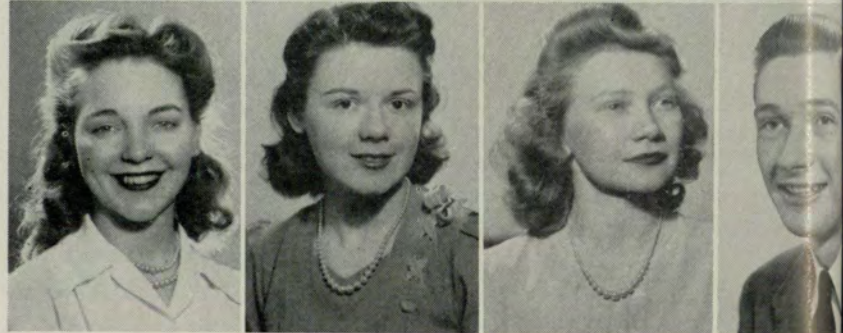


EUGENIA BRIDGES  
Director

JUANITA MAILEY  
EVELYN MATHIS  
EMMA LOU MOSS  
SARA RAY



MIRIAM ROUSE  
NELLE RUSTIN  
LOUISE SOWELL  
BOB YOUNG





Paul Atherton with Anne Fitzgerald and Martha Cason in scenes from the Playcrafters' successful mystery thriller, "Ladies in Retirement."



DONNA ROBERTS  
President



#### OFFICERS

- |                 |       |                |
|-----------------|-------|----------------|
| DONNA ROBERTS   | ..... | President      |
| ANNE FITZGERALD | ..... | Vice-President |
| MARTHA CASON    | ..... | Secretary      |
| TOM CONNELL     | ..... | Treasurer      |

Under the direction of Bridges, Playcrafters produced many fine plays—among the best, "Ladies in Retirement," "The Boor," and "Winterset." To President Donna Roberts went honors for best acting of year. To newcomer, Louise Gagnon, went very honorable mention.

# SPORTS

## EVENING COLLEGE ATHLETICS

During the session of 1941-42, the Evening College sponsored the most complete program of athletics ever given. Assisting Captain William P. Layton, Director of Athletics, were Coaches Millard Posey, Donald Floyd, Harold Duncan, Mary Bumstead, Tommy Phillips, Bill Holt, Bob Elliott, and Bill Lozier.

## BASKETBALL

The boys' basketball team was coached by Millard Posey for the second season and scored 16 victories against 10 defeats. Mary Bumstead, last year's star forward, coached the girls' basketball team and produced a very scrappy team that, with a 50-50 break in victories and defeats, earned an enviable reputation for the school. Both teams took a number of out-of-town trips. Members of the boys' basketball team were: Posey, Hickman, Gabriel, Roddy, Harmon, Dillard, Kent, Feldman, Leaf, Hatcher, Paradies and Abreu. The girls' team was composed of Mary Bumstead, Martha Hargrove, Julie Lambert, Sara Lowe, Lavinia Partee, Beverly Zerbst, Ruby Harrelson, Margie Blair and Nell Womack. Miss Pickett Hynes was chap-eron and manager.

## BOXING AND WRESTLING

Tommy Phillips, Southeastern Champion Boxer, coached the Evening College boxing team in its first year. Due to lack of experience, only one or two bouts were scheduled. Members of the boxing team were: Jack McNeil, Joe Thomas, Teddy Byers, Jack Duncan, Frank Hamilton, Ted O'Callaghan and Roy Hackney.

Bill Holt for the second year coached the G.E.C. wrestling team, and under his expert guidance the team won the Georgia State Championship. Members of the team were: Bill Holt, Frank Hamilton, Pete Devita, Pat Cooke and G. L. Thomas.

## TENNIS

Donald Floyd, number one Owl ace, started the tennis team on its fourth year of intercollegiate competition. He will be seeking to uphold only two defeats in three seasons. To date, the team has won four matches without any defeat. Members of the team are: Donald Floyd, Marvin Nicholson, Harold Duncan, Dick O'Callaghan, Millard Posey, Adrian Slaughter and Charles McClure. Their current schedule follows:

March 29:	Federal Prison . . . . .	There
April 2:	Clemson . . . . .	Here
April 4:	Davidson . . . . .	Here
April 11:	West Georgia . . . . .	There
April 22:	Alabama . . . . .	Here
April 25:	South Carolina . . . . .	There
April 27:	Citadel . . . . .	There
May 1:	Georgia Tech . . . . .	There
May 2:	Emory Junior . . . . .	There
May 9:	Open	
May 17:	Federal Prison . . . . .	There

## OTHER SPORTS

Other sports participated in this year were Bowling, under direction of Harold Duncan; Rifle competition, under the direction of Professor Bill Lozier, former star of the Columbia University Rifle Team, and Softball, under the direction of Coach Bob Elliott, who also assisted with a number of other sports.



Snaps on this page include:

- wrestling
- basketball—girls and boys
- rifle
- gym
- ping-pong
- boxing
- tennis



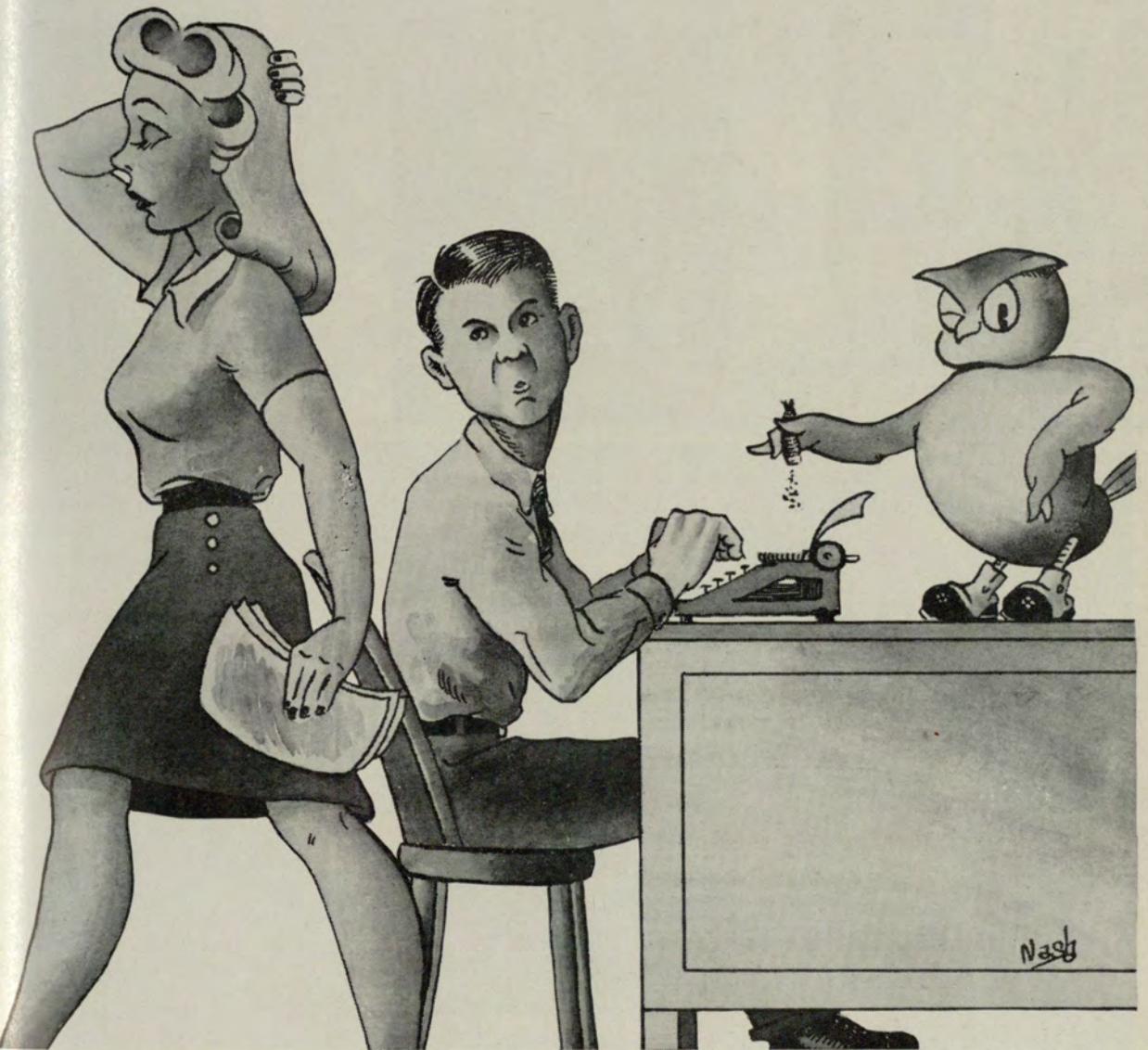
## Closing Deal

These pictures of dealings with friends and faculty including eating on the ping pong table at the lodge, joojing, Venetian house party, all classes, Chris plays music, where's the ride? Daytona Beach

combers, confab, grinning at camera, who'd you vote for? a dollar donation honors from Layton, Hogan Buffalo did he come, Louise? fast piece, Daytona tasig lake, and outside the cage.



# FEATURES



... preferred stock ...



LOIS DOZIER—Most Intellectual Girl.  
ED CLARK—Most Intellectual Boy.



TOM LUCK—Most Likely to Succeed  
President Roosevelt.



SARA McDANIEL—Most Dateable  
TOM LUCK—Most Popular Boy.



LOUIS BATES—Most Popular Teacher



GRADY BANKS—Best-Dressed Boy.  
EVELYN MATHIS—Best-Dressed Girl.



JAN KELLER—Boy I would rather  
caught in a black-out with. SARA  
McDANIEL—Girl I would rather  
caught in a blackout with.

## SUPERLATIVES OF G. E. C.

as chosen by Australian (?) bal-  
lot and announced at the Junior  
Popularity Dance—1942.



Well, don't ask me!

To left—  
Daisy Mae and Jan were  
justified in winning their  
honor.

... selected commodities ...





THE WOLVES AND THE  
LAMBS at:

Indian Creek Lodge

.....

Buttermilk Ball

.....

Homecoming Banquet and  
Dance



# BEAUTIES

For beauty, for grace, for charm—the following girls were chosen by Walter Neblett, the NOCTURNE photographer, to represent the 1942 Evening College:

NANCY HURLEY

ELIZABETH RAMSDEN

EVELYN MATHIS

JOSEPHINE ELARBEE

BOBBIE GRIER

ROSEMARY HUGHES

MATILDA IVEY

MARTHA NALLEY

EVELYN



ELIZABETH





JOSEPHINE



BOBBIE



ROSEMARY



MATILDA



MARTHA



NANCY



... quotations closed ...

SPECIAL CLASS (CONTINUED FROM PAGE 45)

Ralph James  
 Helen Mae Jeffries  
 Jimmie F. Jernigan  
 Carroll Carter Johnson  
 Charles E. Johnson  
 George K. Johnson  
 Mrs. Marie W. Johnson  
 Shelton M. Johnson, Jr.  
 Thomas George Johnson, Jr.  
 John Flynn Johnston  
 Margaret Eleanor Johnston  
 Sam Johnston  
 Mrs. Thelma Holbrook Johnston  
 Mrs. Candler Jones  
 Charles Eugene Jones  
 Harry Lee Jones  
 Herbert Candler Jones  
 Bill T. Jordan  
 Virginia Bernice Joutras  
 Maria Genge Kamack  
 Lillian Agnes Kamack  
 James Nicholas Kaness  
 Ruth Karlson  
 Charles Preston Keeter  
 Nannie Ella Kelley  
 Albert Lewis Kent  
 Edward Kessler  
 Mrs. Miriam Garber Kessler  
 William Bryan Kickliter  
 Euclid Loyd Kilday  
 Betty Kilgore  
 H. Gilbert King  
 Joe Cooper King  
 Lillian B. King  
 Julian Francis Kinnett  
 Edward Parker Kinsey  
 Travis Kirkland  
 Evelyn Barber Knight  
 Charles S. Knox  
 Milda Marie Koppe  
 Gilbert Arnold Koppin  
 John B. Kramer  
 Max Krieger  
 Woodrow Wilson Lacefield  
 Wilfred Earl Lacey  
 Eleanor C. LaMotte  
 Julie Lancaster  
 John A. Lance  
 Mrs. Sue Jackson Landers  
 J. Frank Lane  
 Eleanor Lanham  
 Rene Parks Lanier  
 Caroline M. Larendon  
 Dorothy Lynne Laremore  
 Elizabeth Larisey  
 Gloria B. LaRoche  
 Carol Latham  
 Ralph Latham  
 Hulon Thomas Lawson  
 Lester Lee, Jr.  
 Cenus Frances Levenette  
 Thomas Eugene LeVert  
 Bernard Lewis Levy  
 Ivah Margaret Lewis  
 Judith Mary Lewis  
 Mattie Mae Lewis  
 Ida Mildred Lietch  
 Paul A. Lindig  
 Edgar R. Lindsay  
 Mrs. Alwilda Lindsey  
 Eloise Conyers Lloyd  
 Jack H. Lloyd  
 Nick Long  
 Rose Mary Long  
 Walter Carode Long  
 William Leonard Long, Jr.  
 Young Hugh Longino  
 Lura M. Loring  
 Elinor Lewis Lowe  
 Sara Eller Lowe  
 W. Eugene Lowe  
 Guy Hollis Lowry  
 E. Jane Luckey  
 Michael John Lynch, Jr.  
 Henry Eugene McAuliffe, Jr.  
 Henry Jackson McBride, Jr.  
 Edward Exum McCaskill  
 Mrs. Evangeline C. McCay  
 Mildred McClelland  
 Martha Ophelia McCollum  
 Mary Edith McCollum  
 George T. McCurdy  
 John Paul McCurry  
 Howard Joseph McDonald  
 Mark L. McGlasson  
 Reba Roberts McGriff  
 Margaret Josephine McHan  
 Henry Ford McJenkins  
 Frances Catherine McKibben  
 Dorothy McKown  
 Leo McLaughlin  
 Margaret Ann McLucas  
 Jack M. McNeil

Hoyt Hamilton McPherson  
 Ossie Clay Mabry  
 Dossie E. Mabry  
 Roy C. Mabry, Jr.  
 Theodore Maddus, Jr.  
 Muriel Mahaffey  
 Stanford I. Makover  
 Mrs. Della Kingsley Malpasse  
 Mrs. Lillian E. Manning  
 Clyde Winstead Marable  
 Morris Albin Maret  
 Marvin B. Markey  
 Ruth Madeliene Marsh  
 James Edwin Martin  
 Bernice E. Mathews  
 Malvin Harold Mayer  
 Mrs. J. E. Mayo  
 Wade McCline Mayo  
 J. J. Medaries  
 James Raymond Meek  
 Jerone S. Merlin  
 Mrs. Charlotte Clements Miller  
 Ernest L. Miller  
 William G. Miller  
 Sara Elizabeth Milner  
 William Miner  
 Raymond Claude Mitchell  
 Francis Marion Mobley  
 William Gross Mock  
 William D. Montgomery  
 Nelle Moore  
 Pierce Moore  
 John Boyd Moon  
 Mrs. Lois Rowe Morgan  
 Simeon Ward Morgan  
 Betty Anne Morris  
 Jerry Lecourte Morris  
 Ralph Alton Murphy, Jr.  
 Joe Bob Murphy  
 Thomas Edward Murphy  
 Frances Elizabeth Myers  
 Laurie Neff  
 Mary Claudia Neff  
 Arthur Lewis Nelson  
 James Wilbur Newberry  
 Robert Edward Newman  
 William Trusslow Newman  
 Hugh Bradley Nolan  
 Clara Trimble Noland  
 Artie Norris  
 Edman Dewey Norris  
 Fred Andrew Norton  
 Thomas Richard O'Donnell  
 T. Edward Oberst  
 Elsie Odum  
 Raymond H. O'Kelley, Jr.  
 Ellen Lucille Oldham  
 Robert Joseph Oliver  
 Ethel Dorothy O'Neil  
 Hugh Clifford Oppenheimer  
 Ada O'Quinn  
 Mrs. Ruby Mae O'Rear  
 Virginia Mae Orr  
 Alvin J. Overby  
 William Paul Padgett  
 Marjorie Elaine Paesil  
 Mrs. Joe E. Palmer  
 Charlie Jack Parham  
 Dan Paradies  
 Genie Hearn Park  
 Raymond Estes Parker  
 Winston M. Parker  
 Bill Kemp Parnell  
 Katherine Emma Payne  
 Annie Ruth Papham  
 Sidney Pazol  
 Robbie Cannon Peele  
 Woodrow Wilson Penn  
 Mary Olga Perkins  
 Carl Benard Perry  
 Mary Frances Perryman  
 Martha K. Persons  
 Martha Barbara Peter  
 A. Elizabeth Phillips  
 Jack E. Phillips  
 Thomas Frank Phillips  
 Frances Louise Pinkerton  
 Mary G. Plumb  
 John R. Plunkett  
 Mrs. Ruth S. Plunkett  
 Doris Anastasia Poole  
 Herman Lee Poole  
 Annie Ruth Popham  
 Millard Johnson Posey  
 Lawrence Donald Potts  
 Elbert Henry Powell  
 Mary Drucilla Powell  
 Mrs. Signe Matson Powell  
 Lawson Milton Prather  
 Rubye Edith Prather  
 Audie A. Prescott  
 Harold Milton Prescott  
 Laura Evelyn Prescott

Hugh McNatt Price  
 Edgar E. Price  
 Ivan G. Prim  
 Reid Wilfred Puckett  
 James Gartrell Pugh  
 Troy Clifford Purvis  
 Richard C. Quinn  
 James Elliott Radway  
 Cora LaVancha Ragsdale  
 Nora Valana Ragsdale  
 Doris Carolyn Ramage  
 Helen Ramsey  
 Isabel Fitzgerald Rapier  
 Mary Kathryn Raulerson  
 Henry Burton Ray  
 William G. Reid  
 Olive Elizabeth Renney  
 Mildred Frances Rhodes  
 Russell Owen Rippin  
 Herndon Eldred Risner  
 Barron George Roberts  
 Mary Charlotte Robinson  
 Phonso Jay Rogers  
 Will W. Rogers  
 John Lee Robertson  
 Raymond Mitchell Roddy  
 Mary Anne Rose  
 William Porter Rosselle  
 Texana Georgie Ruff  
 Barbara Catherine Rush  
 Mary Isabelle Rustin  
 James Hines Rutherford  
 Mrs. Charlotte Stein Sacks  
 Robert Callaway Sanders  
 Rose Roberta Sanders  
 Willis W. Sanders  
 James Ernest Sarratt  
 Lizzabell Saxon  
 John Frank Scarborough  
 Edwin Elbert Scroggus  
 John F. Scruggs  
 William Swift Seamans  
 Myrtle A. Seckinger  
 Phillip E. Sellers  
 Bess Sentrell  
 Fred M. Seymour  
 Jimmie N. Shackelford  
 Mrs. Louise Dillard Shannon  
 Jeannette Sharp  
 Thomas W. Shaw, Jr.  
 Frances Ellen Shearer  
 Lillian Melrose Sheats  
 Andrew Thomas Sheils  
 Sandford Forrest Shell  
 Milton Thomas Shelnett  
 Isabel Shockley  
 Mrs. Mary Jerome Simmons  
 Sarah Redding Sims  
 James Franklin Singleton  
 John H. Singleton  
 Mrs. Evelyn Greer Sisk  
 Jacquelynn Sisk  
 Tom W. Simpson  
 Joyce Lee Slate  
 Belle L. Slider  
 Earl Ring Slider, Jr.  
 Mary Louise Slife  
 Lois Alta Smith  
 Dot Elizabeth Smith  
 Frank Chris Smith  
 George William Smith  
 Janie Nelle Smith  
 Linton H. Smith, Jr.  
 Mae Smith  
 Marie Smith  
 Robert Leonard Smith  
 Thomas V. Smith  
 William Vaughn Smith  
 Joe M. Solomon  
 Otis Waren Sommers  
 Aaron Sosnin  
 Robert Toombs Spearman  
 Louis Daniel Specht, Jr.  
 Robert Neil Springfield  
 William Burson Spurlock  
 Robert Lansing Stamper  
 George B. Standford  
 Julian Cecil Stanley, Jr.  
 Mrs. Mae C. Steed  
 Robert L. Steed  
 Albert Thomas Stephens  
 Harold B. Stephens  
 Mary Aline Stiff  
 Thomas Franklin Stocks  
 Frank C. Stone, Jr.  
 Jerry Stone  
 Mrs. Phyllis L. Stone  
 Earl Paschal Story  
 Fred Jack Stoughton  
 Joel Stowers  
 Clifford Ansel Strickland  
 Virginia Strickland  
 Frank Sule

William Oscar Suttles, Jr.  
 Bernard Finley Swafford  
 Dixie Sweet  
 Maggie Mabel Sweetman  
 Clyde Virgil Swofford  
 Robert Elmer Tanner  
 M. Elizabeth Tatum  
 Henry Coelton Taylor, Jr.  
 Estelle Elizabeth Thames  
 Lonie Campbell Thomas  
 Mary E. Thomas  
 Whitney Pembroke Thomas  
 William Ladd Thomas  
 Hugh Maxson Thomason  
 Harold Thompson  
 Nina Olivia Thompson  
 Denton Thorne  
 Jewel Katherine Thornton  
 James Oren Threlkeld  
 Ruth Jeanne Tiller  
 James Davis Timie  
 Adelaide Jean Todd  
 Mrs. Nan Clements Todd  
 William Hiram Todd, Jr.  
 Lydia R. Tomasetti  
 Marvin Raymond Toney  
 John A. Torrance  
 Sara Traynham  
 Susie Virginia Tribble  
 Thomas Clack Tucker  
 Alice Jane Turner  
 Ralph Clifton Tuxworth  
 Harold A. Tyler  
 Mary Idia Upchurch  
 Ben Edward Upshaw  
 Edward Burnette Van Voorhees  
 Joseph Berry Vandigriff  
 George Johnson Vandiver  
 William Monroe Vandiver  
 Lewis Carroll Varnedoe, Jr.  
 Jack Van Sandt  
 Margaret Jane Vaughan  
 Calvin Dennis Waddell  
 Guy William Wages  
 Alvin P. Wagoner  
 J. Singleton Waldrop  
 Jeanne Carolyn Walker  
 Margaret Walker  
 Roberta Valeria Walker  
 Luther R. Wallace  
 Virginia Nancy Wallace  
 Theodore Frank Walter  
 James Dixon Ward  
 Luther T. Ward  
 Charles Arthur Ware  
 Sarah Antoinette Waters  
 Glenn Gipson Watkins  
 Frank Ezell Watson  
 Wayne Milton Watson  
 George Valentine Weisz  
 Robert Hewitt Whartor, Jr.  
 Mrs. Alice S. Whatley  
 Rachel Whatley  
 Thomas Warren Wheeler  
 Cleo Whisant  
 Annie Frances White  
 Edna Earle White  
 James Gordon White  
 William A. White, Jr.  
 Martha Allen Whitehead  
 James Bryan Whitfield  
 James T. Wiley, Jr.  
 George Bryan Wilkes  
 James Richard Wilkinson  
 Joe B. Wilkinson  
 Carolyn Williams  
 Emily Hope Williams  
 Dorothy Neill Williams  
 Mrs. Rowan Anthony Williams  
 Charles B. Willingham  
 August Maurice Wilson  
 Robert Franklin Wilson  
 Jerome S. Wing  
 Mrs. Vura Davis Wingard  
 Wendell E. Wolfe  
 Mrs. Irene Wolfson  
 Jane Elizabeth Wood  
 L. Hazel Wood  
 Norman Ernest Wood, Jr.  
 Patricia Eulene Wood  
 Richard Snyder Wood  
 Ruby McNeilly Worcester  
 George Grover Wray  
 Daisy Ellen Wright  
 Ethyle Yancey  
 Barbara Carroll Yarn  
 Harlin Vance Yates  
 James Bryant Youmans  
 Robert Dorn Young  
 Dorothy Young  
 William Louis Young

## THE DRAUGHON SCHOOL OF COMMERCE

"IN QUEST OF QUALITY"

Entrance Requirements:

High School Graduation and Character References  
All Graduates Placed in 1941 and More Than 1,000 Calls Which Could  
Not Be Filled

PEACHTREE AT BAKER ST.

ATLANTA, GA.

COMPLIMENTS  
OF  
**CAPITAL CITY PHARMACY**

283 Peachtree Street

**PICTURE FRAMING . . .**

All Kinds

GREETING CARDS — GIFTS  
PHOTO FRAMES — BRIC-A-BRAC

**ART AND FRAME SHOP**

56 Broad St., N.W.

WA. 8219

**RIALTO THEATRE**

Corner Forsyth & Luckie Streets

HOME OF OUTSTANDING FIRST-RUN  
PRODUCTIONS

**THURSTON HATCHER**

Fine Photographs

WAlnut 2153

110 Forsyth St., N.W.

## Things for the Car and Home



### RCA Victor Radios

Parts, Accessories —  
Over 2,000 items for  
the automobile and  
home . . .  
Bicycles, Toys, Sport-  
ing Goods, Oils, Seat  
Covers, Horns, etc.

## ECONOMY AUTO STORES

THREE ATLANTA STORES:  
Whitehall Street at Mitchell  
741 Marietta Street (Near Ponders Ave.)  
811 Gordon Street (West End)

## Cordially Yours . . . HOLZMAN'S

"Yours" for the very best in jewelry  
and gift items—

"Yours" for the most reasonable  
prices—

"Yours" for courteous, friendly  
service—

On this, our 45th anniversary,  
Christine Wing, Evening Col-  
lege graduate, invites you to  
visit us and make Holzman's  
"Your" gift headquarters.

## HOLZMAN'S

29 Broad Street, S.W.



# GOLD SHIELD

## Launderers and Cleaners

TRIO  
AMERICAN  
PIEDMONT

CAPITAL CITY  
DECATUR  
MAY'S

TROY  
GUTHMAN  
EXCELSIOR

ATLANTA, GEORGIA



COMPLIMENTS

OF

J.P. ALLEN & CO.  
*Atlanta*



**Three-Hour Service  
Laundry and Dry Cleaning**

Cor. Luckie & Cone

JA. 3847

The Best Dressed Men Wear...



**SCHWOB CO.**

ALBANY

ATHENS

ATLANTA

COLUMBUS

LaGRANGE

MACON

SAVANNAH



ENJOY A DELICIOUS  
LUNCHEON AT . . .

**ELLEN RICE  
TEA ROOM**

63½ Poplar Street, at Forsyth  
JA. 4181

We Are Glad to Serve Evening  
Parties, Dinners, Etc.

---

MEET YOUR FRIENDS

AT THE

**MELBA CAFETERIA**

Luckie at Forsyth Street

Steaks                      Fried Chicken

The Real Mexican Chile

Tamales

Sandwiches—All Kinds

**Luckie Chile Parlor**

117 Luckie Street

---

**UNIVERSITY GRILL**

Across Street from School

Baked Ham . . . . . 15c

Chopped Steak . . . . 12c

Cheeseburgers . . . . 12c

(On Toasted Buns)

Hamburgers and Hot Dogs, 6c

Courteous Service at All Times

COMPLIMENTS  
OF

**WOODING'S  
CAFETERIA**

Serving Time:

7:15 to 9:30 A.M.

11:15 A.M. to 2:30 P.M.

5:00 to 7:30 P.M.

WE CATER  
TO BANQUETS

Nothing But Good Food  
at Low Prices

**DAVIS BROTHERS  
RESTAURANT**

104 Luckie Street, N.W.

ATLANTA

If you are not a Satisfied Customer,  
your check is on the House

# ANSLEY HOTEL

Just around the corner from the Evening College. Ideally located for Fraternity, Sorority and other organization banquets, dinners, etc.

L. S. TUCKER,  
Manager.

## Evening College Students

RECOMMEND

### Original Waffle Shop

"MEET THE GANG"

AFTER DANCES, SHOWS

And even get a Delicious Steak  
after studying

Excellent Food

Reasonable Prices

62 PRYOR STREET

Johnny Chotas, Manager

Reconditioned

## VENETIAN COUNTRY CLUB

SWIMMING — TENNIS  
DANCING, Etc.

SPECIAL  
SUMMER MEMBERSHIPS

Ideal Picnic Facilities  
CRYSTAL CLEAR STERILE WATER  
CHANGED EVERY DAY

## IVAN ALLEN- MARSHALL CO.

29 North Pryor Street  
WA. 0800

JACK BALL  
Representative

WA. 1463

## HORNE Desk & Fixture Co.

Commercial Furniture  
Desks — Chairs — Files  
Safes

47-49 Pryor Street, N.E.  
ATLANTA, GA.

## Make Your Dollars Travel Farther

In spite of all the talk  
about scarcities and ris-  
ing prices . . . your money  
actually buys more at  
MARCUS' than ever be-  
fore. Huge assortments  
of clothes and furnish-  
ings.

**MARCUS**  
62 PEACHTREE, THRU to BROAD

## EARL G. DOWDA OPTICAL CO.



OPTOMETRISTS

OPTICIANS



132½ Whitehall Street, S.W.

Main 1010

ATLANTA

## BOWL The Right Way at

## BLICK'S

(5 Convenient Centers of Activity)

### LUCKY STRIKE

28 Alleys . . . . . 671 Peachtree St.

### BOWLING PALACE

12 Alleys . . . . . Briarcliff Plaza

### BOWLING CENTER

52 Alleys . . . . . 20 Houston St.  
(Largest One-Floor Bowling Center in  
the World)

### QUEEN PIN

8 Alleys . . . . . 2143 Peachtree St.

### LAKEWOOD PARK

14 Alleys . . . . . Lakewood Park

100 N.D.P.B.C. Sanctioned Alleys

## GORDON'S



Fresh

POTATO CHIPS

SALTED PEANUTS

PEANUT BUTTER SANDWICHES

CAKES - NUTS - CANDIES

**Gordon Foods, Inc.**

TRUCKS SERVING THE SOUTH

## J. P. STEVENS

### ENGRAVING COMPANY

Wedding, Reception and  
Visiting Cards  
Personal Stationery

110 Peachtree St. Atlanta, Ga.

## HARRY BARFIELD COMPANY

MASTER PRINTERS

Telephone MAin 3430

142-4 Spring Street, N.W.

Atlanta, Georgia

## WALTER NEBLETT AND BILLY McLAUGHLIN

WHO MADE THE PORTRAITS FOR

*The 1942 Nocturne*

Will Be Happy to Finish Personal Pictures for You from the  
Negatives Taken for the Annual at Half the Regular Prices.

Call WALTER or BILLY at

VErnon 1528

No. 5 Baltimore Place, N.W.

University System of Georgia  
University System of Georgia Center, in Atlanta  
**EVENING COLLEGE**  
and  
**JUNIOR COLLEGE DAY CLASSES**  
**CO-EDUCATIONAL**

Day and evening classes are given to meet the needs of students as follows:

1. Those who wish to take work for University credit toward the degrees of Bachelor of Arts, Bachelor of Science in Commerce, Bachelor of Arts in Education, and Bachelor of Science in Education.
2. Students who wish to receive the degree of Bachelor of Commercial Science, through the Evening College, for work done entirely in the University Center in Atlanta.
3. Students who wish to complete work for a Junior College Diploma of graduation from the University System of Georgia in the fields of Bachelor of Arts, Bachelor of Science, Bachelor of Arts in Education, Bachelor of Science in Commerce, and Bachelor of Science in Education.
4. Students who wish to complete work for a Certificate in Business Administration or for a Certificate in Secretarial Training.
5. Special students taking selected courses and not having in view an extensive program of study.

*Earn While You Learn . . . Learn While You Earn*



Engravings by

*Atlantic  
Engraving  
Company*

253 Peachtree St.

Atlanta



. . . WE ARE

ORGANIZED TO SERVE  
YOU IN EVERY WAY THAT  
PRINTING AND LITHOGRAPHING  
CAN ASSIST IN MAKING YOUR  
SCHOOL ANNUALS EFFECTIVE . . .  
HERE THE CAPACITY TO PRODUCE  
AND THE SPIRIT TO SERVE ARE  
COORDINATED TO YOUR  
FULLEST ADVANTAGE.



*The Stein Printing Company*

161 Luckie Street, N. W.

ATLANTA, GEORGIA

To our shareholders—our friends in business who have so generously contributed their advertisements to this ANNUAL report—we wish to express the hope that, because of this book, future sales will be—not quiet, nor irregular—but moderately higher.

—THE NOCTURNE STAFF.



