

The

NOCTURNE

1943



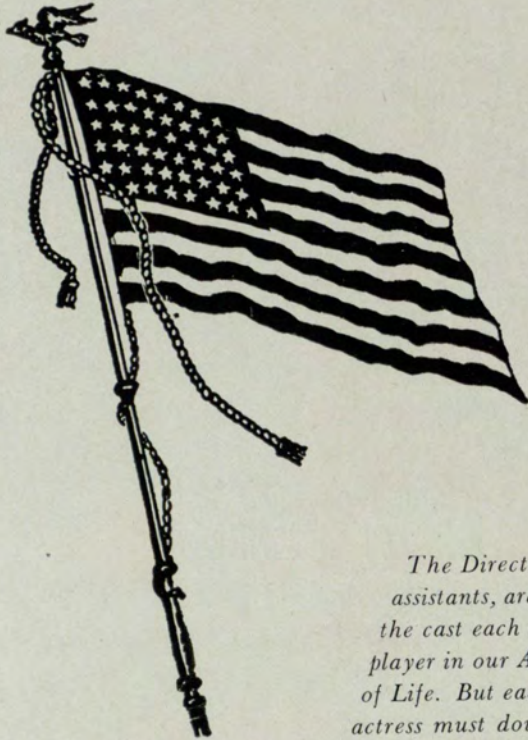
The
N O C T U R N E
for
1 9 4 3

We proudly present to you this, the 1943 war issue of the Nocturne. This year's book is not so large and elaborate as in past years, but we are sure you will realize that the things which are missing from its pages have gone to a more important task . . . that of participating in victory, a victory which can be nothing short of complete, all-out, and final if the existence of such American institutions as the Georgia Evening College is to be assured. The blank spaces in the 1943 Nocturne are symbolic of the void and emptiness left in the institution by the departure of so many of our fellow-students and co-workers to the armed forces.

To Editor Jim McNabb and Business Manager Cecil Turner, who were called into service on April 9, and to all our other friends in the service of our country, we pledge our every effort to preserve and maintain the things to which we know you will return after victory.

THE STAFF.

R 37873
Nocturno
1943



*Although many of our friends
and loved ones have gone to
war, and our student body
has diminished, that spirit
which has always been a
Georgia Evening College
tradition must live on.*

*As we look about us today,
the scene is very different
from that of two years ago.*

*Yes, the stage is the same,
but many of the characters
have left for roles in a
greater act—that of defending our
country and all that it stands for.*

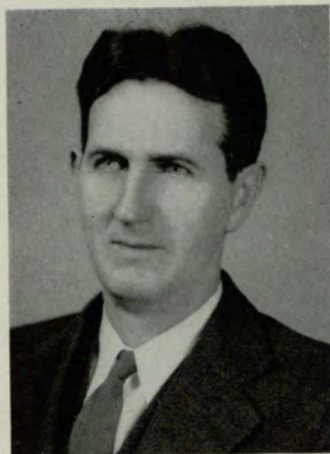
*The Director, and his
assistants, are still teaching
the cast each to be a leading
player in our American Way
of Life. But each actor and
actress must double his effort
to keep our spirit alive in order
to keep faith with our boys
away so that when they return
they may finish their education
in a setting much as they left it.*

*And so, the remaining players must
carry on with the 1943 theme . . .
“On with the Show” until the Grand Finale
when we shall all be together once again.*

ADMINISTRATION



DR. GEO. M. SPARKS
Director

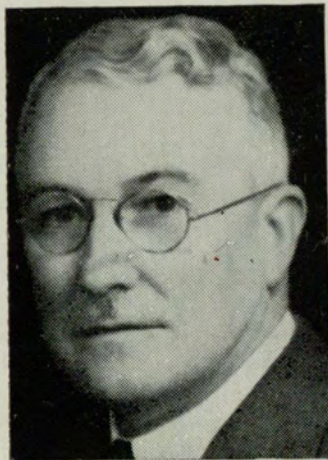


MR. T. M. MCCLELLAN
Registrar

For Dr. Sparks, whose inspiration and guiding hand has made the Evening College what it is, and for Mr. McClellan, the students' good friend and generous helper, we are very grateful.

GEC, however, as if the loss of most of its boys to the armed services was not enough, also sadly faced the loss last January of its beloved Mr. McClellan, who left to go to Florida to farm. It seems that priorities got in his hair though, and he is back in town and has made other connections. Here's wishing him the best of luck in everything!

We extend congratulations to Doctor Campbell, whom everyone knows and loves and who brings to mind thoughts of bugs and worms, and plants, and skeletons, but also smiles and a helping hand. He has taken over some of "Mr. Mac's" former duties and is now Dean of the Evening and Junior Colleges. Dr. Campbell will continue to conduct some of his biology classes.



DR. ELMER G. CAMPBELL
Dean

24470

FACULTY FOR YEAR 1943

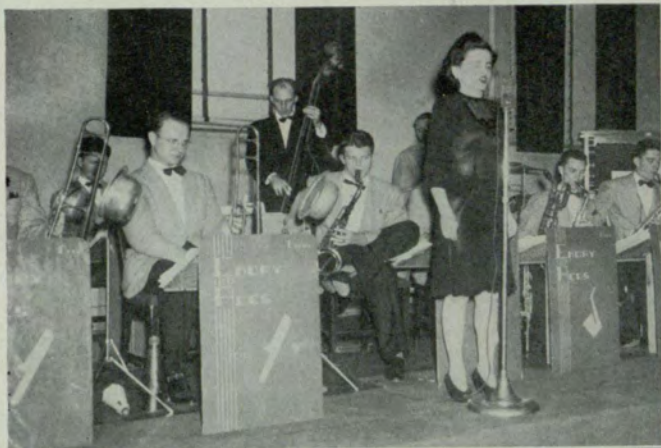
- FRED W. AJAX, A.B., M.A., Emory University, University of Chicago.
- LOUIS T. BATES, A. B., M.A., Emory University.
- C. R. F. BEALL, M.D., Vanderbilt University.
- HELEN BEAM, Librarian, A.B., Library of Science, University of Georgia, Emory University.
- LUCIAN BELL, A.B., Georgia Evening College, Graduate Work Emory and University of Tennessee Medical College.
- JAMES E. BOYD, A.B., M.A., Ph.D., University of Georgia, Duke University, and Yale University.
- RABUN L. BRANTLEY, A.B., M.A., Ph.D., Mercer University, George Peabody College for Teachers.
- R. C. BREWER, A.B., University of Kentucky, University of Wisconsin.
- EUGENIA BRIDGES, A.B., Agnes Scott College.
- ROBERT PRESTON BROOKS, A.B., M.A., Ph.D., University of Georgia, Oxford University, University of Wisconsin.
- JESSE CARLTON BROWN, B.S.E.E., B.C.S., Georgia School of Technology, University System of Georgia Evening College.
- MRS. NAN BRYAN, A.B., M.A., University of Illinois.
- H. O. BURGESS, B.S., A.M., Ph.D., Alabama Polytechnic Institute, Emory University, George Peabody College for Teachers.
- ELMER G. CAMPBELL, A.B., M.S., Ph.D., Hiram College of Ohio, Perdue University, University of Chicago.
- W. C. CANTRELL, A.B., M.A., LL.B., University of Wyoming, Atlanta Law School.
- LLOYD WALTER CHAPIN, A.B., M.A., Emory University, Harvard University, Graduate Work, University of Chicago, University of North Carolina.
- R. A. CHRISTOPHER, B.S.C., University of Georgia.
- BERTRAM OLIVER COSBY, B.S., M.S., Emory University, Graduate Study, University of North Carolina and Johns Hopkins University.
- H. E. DENNISON, A.B., University of Tennessee; Graduate Work, University of South Carolina.
- H. B. ELLIOTT, B.C.S., M.S.C., C.P.A., Georgia School of Technology, University of Georgia.
- ERNEST H. EMORY, A.B., B.S., Mercer University, Georgia School of Technology.
- ELMER R. ENLOW, deceased.
- E. L. FLOYD, A.B., M.A., LL.B., University of Georgia.
- EDWIN HENRY FOLK, JR., A.B., M.A., University of South Carolina, Princeton University.
- JOHN A. GRIFFIN, A.B., M.A., Emory University; Graduate Work, University of Wisconsin.
- RALPH A. HEFNER, B.S., S.M., Ph.D., Roanoke College, University of Chicago.
- JOHN D. HOFFMAN, Music Director, Atlanta Conservatory of Music, Musical College of Chicago, Franc Prochovski, New York; Robert Clark, St. Louis; Will-Ford Watters, Atlanta; William Claire Hall, Chicago.
- LUTHER R. HOGAN, A.B., M.A., LL.D., Mercer University, University of Chicago, Columbia University, deceased.
- R. R. HOLLINGSWORTH, A.B., M.A., Ph.D., Emory University, University of Chicago.
- MRS. R. R. HOLLINGSWORTH, B.S., M.A., Kansas State College, Teachers College, Columbia University, University of Wisconsin, University of California, University of Chicago.
- MRS. J. B. HOSMER, A.B., Fine Arts Certificate, Washington University, St. Louis School of Fine Arts.
- HAL HULSEY, A.B., M.A., University of Georgia, Graduate Work, University of Georgia, Emory University.
- H. REID HUNTER, A.B., M.A., Ph.D., Duke University, Columbia University, Emory University, George Peabody College.
- MISS PICKETT HYNES, B.C.S., University System of Georgia Evening College.
- MRS. WILLATHEA JACKSON, B.C.S., M.A., Georgia Evening College, Emory University.
- V. V. LAVROFF, Junior College, Harbin, China, B.S.C., M.A., Georgia School of Technology, Emory University.
- MAJOR WILLIAM P. LAYTON, Director of Physical Education, B.Ph., Emory University.
- JOSEPH N. LECONTE, A.B., M.S., Ph.D., Emory University, University of North Carolina.
- B. E. LINDSEY, A.B., M.S.C., University of Kentucky, University of Georgia.
- LIEUTENANT W. F. LOZIER, A.B., LL.B., Columbia University.
- LIEUTENANT GEORGE MANNERS, B.S.C., C.P.A., University of Georgia.
- CARL MAUELSHAGEN, A.B., M.A., Ph.D., University of Tennessee, University of Chicago, University of Minnesota.
- J. E. MAYO, A.B., M.A., C.P.A., Mercer University.
- CAPT. RALPH C. MOOR, B.C.S., University System of Georgia Evening College.
- MAJ. HENRY A. ROBINSON, A.B., M.A., Ph.D., University of Georgia, Johns Hopkins University.
- JAMES E. ROUTH, A.B., Ph.D., Johns Hopkins University.
- JAMES C. SHELOR, B.C.S., LL.B., Georgia School of Technology, University of Georgia, Graduate Work, Columbia University.
- H. O. SMITH, A.B., M.A., Harvard University, Emory University, Graduate Work, University System of Georgia Evening College.
- WILLIAM S. SMITH, B.C.S., Georgia School of Technology.
- GEORGE MCINTOSH SPARKS, A.B., M.A., LL.D., Mercer University, Oxford, England.
- WILLIAM M. SUTTLES, B.C.S., Georgia Evening College.
- MRS. D. B. TALLANT, Registered Nurse.
- MRS. NELL HAMILTON TROTTER, A.B., M.A., University of Arkansas, University of Wisconsin, Dean of Women.
- A. J. WALKER, A.B., M.A., Ph.D., Emory University, Harvard University.
- KNOX WALKER, A.B., A.M., Mercer University, Columbia University.
- MERLE WALKER, A.B., M.A., Ph.D., Hollins Institute, Radcliffe College, Harvard University.
- NOAH WARREN, B.S.C., M.A., C.P.A., Georgia School of Technology, Emory University.



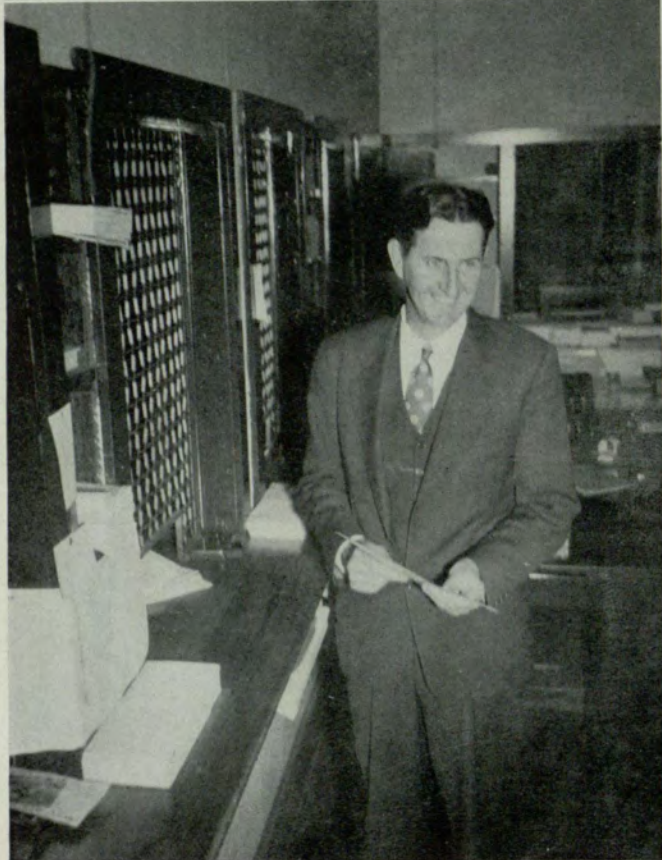
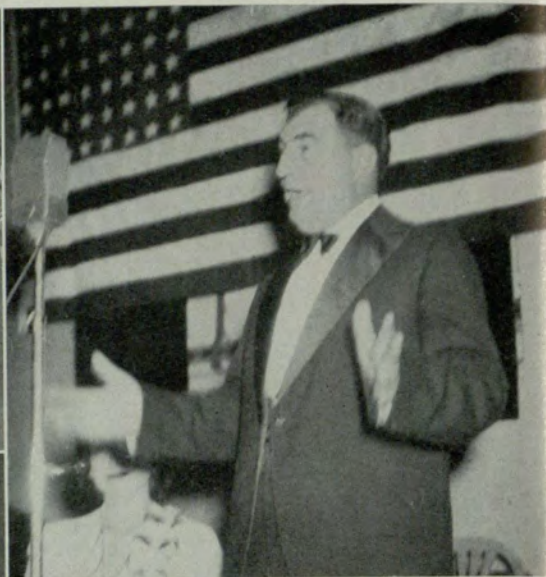
Reading From Top Left: Brewer, Bridges, Brown, Christopher, Floyd, Griffin, Hulsey, Hynes, Lavroff, Layton, Lindsey, Lozier, Manners, Mayo, Routh, W. S. Smith, Tallant, Trotter, Hollingsworth, Hosmer, Hunter, Mauelshagen, Warren, Bell, Suttles, Maddox, Bates, and Cantrell.

Snapshots

Emory Aces



Dr. Young Orates



Mr. McClellan, Students' Friend

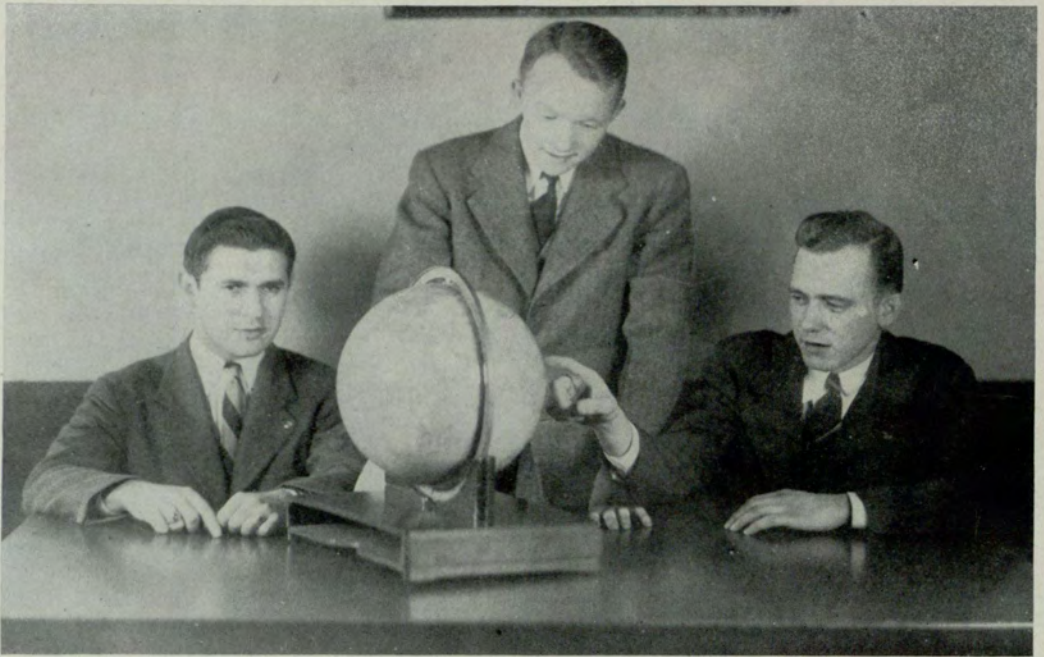
Sale of The First Home-Coming Banquet Ticket

C L A S S E S

Frosh . . . sophs . . . pre-juniors . . . juniors . . . seniors . . . have been fewer in number this year. But the spirit has been the same — a little intensified, maybe, because we have had to be closer-knit. Everyone knows everyone else a little better than ever before. And you can still spot a GEC man a block off.

Many of those whose pictures you see in these pages you have missed for several weeks. Men have been leaving by the score for the services. Occasionally you see them in new uniforms, dropping by to spend a few minutes in the lobby.

These hangouts they still love — the lobby, the Refec — and we still count them an integral part of the classes they served so well.



Senior Class Officers—Trying to guess whether they'll wind up in Ireland or the South Pacific.

SENIORS

OFFICERS

<i>President</i>	PAT COOKE
<i>Vice-President</i>	BOB DALE
<i>Secretary</i>	BERNARD FISHMAN
<i>Treasurer</i>	LILLIAN DURLING

Ira Abernathy



Jake Alhadeff



Melrose Black



Luther Burroughs



Claude Edward Caldwell



Robert Carpenter



Pat Cooke

IRA R. ABERNATHY
Fulton Supply Company

Entered from Central Night School. Nocturne staff '43, Business Manager '43, Intramural Key '42-'43, President '43, Speakers Club '41-'43, President '43.

JAKE ALHADEFF
Federal Prison Industries, Inc.

Entered from Commercial High School.

MELROSE BLACK
*War Department
Lawson General Hospital*

Entered from Atlanta Junior College. Kappa Theta '41-'43, Secretary '41, Treasurer '42, Vice-President '43, Femartia Club '41-'42, President '41, Student Council '42.

LUTHER PIERCE BURROUGHS
Gulf, Mobile & Ohio Railroad

Entered from Fulton High School.

CLAUDE EDWARD CALDWELL

Member faculty Austell Public Schools, entered from Emory University. Attended Gay-Oakland High School, Gay, Ga. (graduated).

ROBERT CARPENTER
Judge of the Civil Court of Fulton County

Entered from Emory University.

FRANK PATTON COOKE
United States Government

President Senior Class '43, Entered from Atlanta Junior College. Student Council '42, Alpha Kappa Psi, '41-'43.

Seniors

Seniors

ROBERT MERRIT DALE
*Air Express Division,
Railway Express Agency*

Entered from Knoxville High School, Knoxville, Tennessee. Student Council '39, '41-'43, Treasurer '43, Nocturne staff '42-'43, Business Manager '42, Inter-Fraternity Council '42-'43, Intramural Key '41-'43, Delta Sigma Pi '41-'43, Headmaster '43, Speakers Club '41-'43, Secretary '41-'42, Vice President Senior Class '42-'43, Ensign, U.S.N.R. Faculty Award '43.

LAWRENCE S. EVANS
Southeastern Underwriters Association

Entered from Clemson College. Delta Sigma Pi '41-'43, Speakers Club '41-'43, Student Council '41-'42, Treasurer of Junior Class '41-'42, Chairman of Homecoming Banquet '42, Inter-fraternity Council '41, Class V-7, U.S.N.R.

THOMAS LEE FARRAR
United States Army
Entered from Atlanta Junior College.

SIDNEY HERBERT FELDMAN
London Iron & Metal Co.
Entered from Boys' High School.

BERNARD FISHMAN
Atlanta Broom Company

Entered from Emory University. Secretary Senior Class '42-'43, Member of Marine Corps Reserve.

JOHN C. FORKNER
Ben S. Forkner Realty Company

Graduated from Young Harris Junior College. Student Council '42, Speakers Club '42-'43, Class V-7, U.S.N.R.

ISAAC NACE HABIF
Army, formerly connected with United States Government

Entered from Boys' High School, Atlanta, Ga. Member of staff of Evening Signal.

Bob Dale

Larry Evans

Thomas Lee Farrar

Sidney Feldman



Bernard Fishman

Johnny Forkner

Isaac Habif

Lila Mae Harrison



Patricia Head



Annabelle Henry



Wm. Howard Higgs



Kathleen Huck



Jeanne Johnson



Inez Kitchens

LILA MAE HARRISON

Atlanta Journal

Entered from David Lipscomb College, Nashville, Tennessee. Crimson Key '43.

PATRICIA HEAD

United States Marine Corps

Entered from Atlanta Junior College. Delta Lambda Sigma '42-'43, Treasurer '42-'43.

ANNABELLE HENRY

Georgia Department of Public Health

Entered from Atlanta Junior College. Phi Chi Theta '42-'43, Crimson Key '42-'43.

WILLIAM HOWARD HIGGS

The Warren Company, Inc.

Entered from Berry College, Mt. Berry, Ga. Graduated from Berry High, Mt. Berry, Ga.

KATHLEEN HUCK

*Fourth Service Command Laboratory
Fort McPherson*

Entered from Agnes Scott College.

JEANNE JOHNSON

Federal Reserve Bank

Entered from Georgia State College for Women. Delta Lambda Sigma '40-'43, Treasurer '41-'42, Crimson Key '41-'43, Delta Mu Delta '42-'43, Glee Club '41-'43, Inter-fraternity Council '40-'43, Vice President '41-'43, Evening Signal staff '41-'42, President Student Body '42-'43. Received Faculty Award '43, and Delta Lambda Sigma Sorority Award '43.

INEZ KITCHENS

Southern Bell Telephone and Telegraph Company

Entered from Kennesaw High School, Kennesaw, Ga. Inter-Fraternity Council '41-'43, Delta Mu Delta '42-'43, President '43, Crimson Key '41-'43, Secretary '43, Phi Chi Theta '41-'43, Treasurer '41-'42, Vice-President '42-'43, Charter Member Telephone Student Club '41-'42, Awarded Robert R. Johnson Scholarship Key '42. Received W. S. Kell Award '43 and Faculty Award '43. Awarded Crimson Key Cup '43.

Seniors

Seniors

BERNICE WANDA LAWRENCE
Retail Credit Company

Entered from Georgia Teachers' College, Statesboro. Student Council '42.

JAMES C. LAXSON
Associated Press

Entered from Tech High School. Intramural Key '42-'43, Alpha Kappa Psi '42-'43, Speakers Club '42-'43, Student Council '43. Officer Candidate, U.S.M.C.R.

RICHARD HAYES O'CALLAGHAN
Office for Emergency Management

Entered from Georgia Tech. Alpha Kappa Psi '41-'43, Tennis Team '41-'42, Intramural Key '43. Class V-7, U.S.N.R.

ANNIE RUTH POPHAM
Citizens & Southern National Bank

Entered from West Georgia College. Student Council '42, Pledge of Kappa Theta, '43.

CLARENCE MITCHELL RAINEY, JR.
Scott-Foresman and Company

Entered from Tech High School.

MRS. SUE R. RIDDLE
American Telephone & Telegraph Co.

Entered from Atlanta Junior College.

JESSE EUGENE ROACH, JR.
Bureau of Unemployment Compensation

Entered from Georgia Southwestern.

Bernice Wanda Lawrence

Jimmy Laxson

Richard O'Callaghan

Annie Ruth Popham



Clarence M. Rainey

Sue Riddle

Jesse Roach

Beth Rogers

Glenn Strothers

Everett G. Summers

Peyton Turner



John Wagon

Fred Windham

Joe Wolfe

BETH ROGERS
Armored Force News

Entered from Atlanta Junior College. Flambo '40-'42, Playcrafters '40-'41, Student Council '42-'43, Evening Signal '42-'43, Editor '42-'43, Crimson Key '41-'43.

GLENN H. STROTHERS
Gulf Oil Corporation

Entered from Monroe A and M, Monroe, Georgia.

EVERETT G. SUMMERS
DeKalb Board of Education

Entered from Oglethorpe University.

LESLIE PEYTON TURNER
City of Atlanta

Entered from Commercial High School, Atlanta, Ga. Graduate of Woodrow Wilson College of Law. Member of Georgia Bar.

JOHN W. WAGNON, JR.
Buckeye Cotton Oil Company

Entered from Middle Georgia College. Class V-7, U.S.N.R.

FRED L. WINDHAM
Mount and Carter, C. P. A.'s.

Entered from Boys' High School. Intramural Key '38-'43, President '42, Delta Sigma Pi '37-'43, Historian '38, Treasurer '43, Zeta Zeta Theta '39, Speakers Club '38-'43, Awarded Retail Credit Company Scholarship '37, Awarded Delta Sigma Pi Scholarship Key '43, Delta Mu Delta '43.

JOSEPH H. WOLFE
Secretary to Judge Paul S. Etheridge
Atlanta Judicial Circuit

Entered from Woodrow Wilson College of Law, LL.B. '40, Member of Georgia Bar, Speakers Club '42-'43, Playcrafters '42-'43, Treasurer '42-'43, Class V-7, U.S.N.R.

Seniors



JUNIORS

OFFICERS

<i>President</i>	SAM FRANKLIN
<i>Vice-President</i>	JIMMY McNABB
<i>Secretary</i>	LOU JOHNSON
<i>Treasurer</i>	CECIL POOLE

Juniors



Allie Barnes

Ruby Blissitt



Marian Frances Calloway

Frank W. Cloudt



Kathryn Cofer

Robert T. Davis



Jim Dillard

Jeanette Dozier



Sam Franklin

Bruce Hafley

Juniors

Wanda Juanita Hamby

Thomas J. Hurst



Louise Johnson

Emory A. Johnston



W. Jan Keller

Lou O. McClamroch



Martha Leona McMichael

James H. McNabb



Joe H. Merrill, Jr.

Anne Rita Murphy



Juniors



Sidney Noveck



Bill Parnell



Cecil A. Pool



Caroline Reid



Donna Louise Roberts



William Robert Scales



Charles C. Snow



Georgia Stone



Dorothy J. Strange



William J. Thomas

Juniors

Montie Elizabeth Tompkins

Lena Wagnon



Myrtle Lorraine Waldrip

Thomas Jerome Weatherly



N. McCoy White

Cecil Williams



Martha Ione Wilson

Norma June Wilson



ENLISTED RESERVE CORPS

ARMY

Adamson, Linton Mallory, Jr.
Aycok, Edward Lloyd
Barnwell, William Habersham, Jr.
Barron, Victor Vinson
Bell, Emory Boone
Benton, William Fletcher
Bosshart, Charles Jennings
Bowen, James Albert, Jr.
Burnette, Lawton Miller, Jr.
Busch, Samuel Monroe
Cain, Earl Lloyd
Campbell, John Frances
Causey, John Nathaniel
Chapman, Marvin Eugene
Chilton, Blake Stewart
Clark, Herbert Dearing, Jr.
Cloudt, Frank Winfield
Crites, Dale Albert
Crowe, Richard Henry
Davis, Ernest Burroughs
Douglas, Nathan Clarke
Farrar, Thomas Lee
Ferguson, Robert Howell, Jr.
Ford, Albert Perry
Franklin, Samuel Owen
Garner, Robert Andrew, Jr.
Garrard, Otis Deklynn
Gravenhorst, William B.
Habif, Isaac Nace
Hamilton, Frank Eugene, Jr.
Hancock, James Harold
Harrell, Francis Maxwell
Hemperley, Leonard Melvin
Higgs, William H.
Jackson, Fred Ridley
Jackson, Howard N., Jr.
Jernigan, James Fletcher
Johnston, Emory Asbury
Keller, Waldo Jan
Kirkman, Everett Eugene
Land, William Curtis
Lee, Fred Terry, Jr.
McCay, Raymond Clement
McNabb, James Harris
McNeil, Jack Beverly
Martin, Lorin Stewart
Minor, Marion Wilton
Mitchell, Raymond Claude
Morris, Page Tysinger
Moseley, George W., Jr.
Nash, Henry Otis, Jr.
Norman, Thomas Hall
Noveck, Sidney
O'Neal, Tracy Welborn, Jr.
Owens, George Clay
Parnell, Bill Kemp
Pazol, Sidney
Pearson, James Wallace, Jr.
Pool, Cecil Aubrey
Powell, James Edward

Powell, Joseph Clifford
Ragsdale, Jesse Bowden, Jr.
Rainey, Clarence Mitchell, Jr.
Reber, Sidney Craft, Jr.
Ruff, William Hugh
Roach, Jesse Eugene, Jr.
Smith, John Harold
Steinhauer, Roy Eugene
Tuck, Bennett Franklin, Jr.
Turner, Lester Cecil
White, Newton McCoy
White, Wallace Edmund
Williams, Cecil Perry
Williams, Woodrow Marbut

NAVY (V-1)

Banks, Robert Lee
Bosshardt, Donald
Edwards, T. A.
Grice, James Woodie
Vicker, James F., Jr.
Woodall, James Allen
Wright, Francis Picken

NAVY (V-5)

Banks, Marshall M.
Beckham, George
Bolen, Earnest
Brown, Frank A.
Duncan, Jack L.
Edwards, George R.
Farrar, Robert H.
Hames, Robert
Hill, John S.
Maffett, Phillip W.
Murphy, Lansing
Rogers, Arthur L., Jr.
Schell, George W.
Stanley, Raymond W.
Tiller, Ray
Winfree, Walter C.

NAVY (V-7)

Atkins, N.
Ball, Jack
Cantrell, Harry
Clarke, Ed
Duncan, Harold
Evans, Lawrence Salley
Feldman, Sidney Herbert
Forkner, John Candler
Inman, Frank S.
O'Callaghan, Richard Hayes
Rhyne, Joseph H.
Sartain, William F.
Seignious, Richard
Wagnon, John Wesley, Jr.
Wolfe, Joseph Harold



PRE-JUNIORS

OFFICERS

President VADIE HONEA

Vice-President FRANK HAMILTON

Secretary MARTHA CASON

Treasurer CECIL TURNER

Pre-Juniors



Ben W. Binford, Jr.

Martha Cason



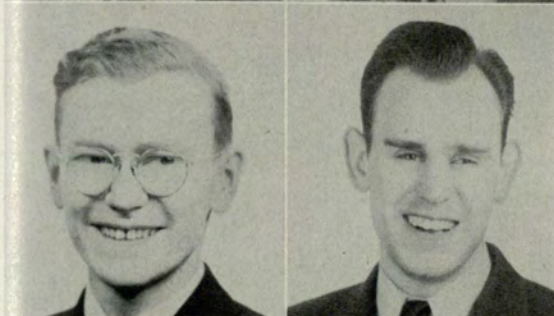
Herbert D. Clarke

Martha Elizabeth Doyle



Joseph N. Elliott

Donald Floyd



Frank E. Hamilton, Jr.

James H. Hancock



Mary Lockie Harrington

Robert C. Harris

Pre-Juniors

Bill Hartsfield

Mary Eloise Henry



Vadie F. Honea

Ruth Isakson



Catherine Matilda Ivey

Allen O. Jernigan, Jr.



Eleanor Carolyn LaMotte

Muriel Mahaffey



Jack B. McNeil

Buck Minor



Pre-Juniors



Madge Moore



Theodore P. O'Callaghan



William Clifford Pattillo



Thelma Sorrow



Louis D. Specht, Jr.



Gabriel L. Thomas



Cecil Turner



Mary Jane Turner



Laura Ruth Webb



Ed Williams



Francis Wright



SOPHOMORES

OFFICERS

<i>President</i>	WALLACE NORRIS
<i>Vice-President</i>	FRED O'KELLEY
<i>Secretary</i>	JANIE B. CHASE
<i>Treasurer</i>	MAXWELL HARRELL

Sophomores



Marshall Asher

Katherine Autrey

Ruth Barron



Victor Barron

W. F. Benton

Virginia E. Berry



Bette Broome

Hogan Buford

Marcus D. Carson



David Cason

Ralph Ogden Chapman

Janie Bee Chase



Vivian Clowdis

Lilian Elaine Cole

Juanita Couch

Sophomores

Evelyne Crawford

Luke Darnell

Jimmie DeLay



L. C. Duncan

Robert Ferguson, Jr.

Norman Frankel



Woodie Grice

Maxwell Harrell

Charlie Hollingsworth



Fred Ridley Jackson

Frankie Kirkland

Eugene Kirkman



Raymond McCay

Phillip Maffett

Lorin Stewart Martin



Sophomores



Thomas Hall Norman

Wallace Norris

Fred H. O'Kelley, Jr.



Tracy O'Neal

Sidney Pazol

Isabel Rapier



Ruby Sellers

Robert Smith

Tommy Stocks, Jr.



Robert Tabor

Minerva Torbett

Bennett Tuck, Jr.



Betty Lee Williams



FRESHMEN



*Available Jack and
Embracable Martha*

OFFICERS

<i>President</i>	JACK DUNCAN
<i>Vice-President</i>	MIRIAM ROUSE
<i>Secretary</i>	JIMMY JERNIGAN
<i>Treasurer</i>	PHELPS WOMBLE

Freshmen



Lynn Adamson, Jr.

William Anglin



James Arendall

Dorothy Arnall



Laura Astin

Bettie Bailey



Lillian Bennett

Marion Catherine Bentley



Doris Blackmon

Bill Baxter



Marie Antoinette Brusch

LaRue Bullard



George Camp, Jr.

Mary Carter

Freshmen

Betty Irene Chambers

Marvin Eugene Chapman



Blake Chilton

Margaret Jean Cochran



Betty Cooper

Mary Cox



Jewel Elizabeth Crawford

Willodean Crowell



Elaine Crump

Nathan Douglas



Jack Duncan

Lillian Elizabeth Dyal



Robert Edwin Baker

Margaret D. England



Freshmen



Mrs. Adelia W. Eubank

Josephine Eubanks



Ruth Fortner

Bayne Gibson



Vivian Juanita Green

W. O. Hammond



Anne Bradley Hoag

Martha Howell



H. N. Jackson

Jimmie Jernigan



Marian D. Jones

Doris Koppe



Ruth Lovern

Alberta Adams Loyd

Freshmen

Sara Louise McClam

Bernie McKeown



Captain Ralph Millsap

Floyd Moon



Martha Lois Murdock

Martha Nalley



H. O. Nash

Byron Pollitt



Millard Posey

Gwendolyn Brown Ragan



Jesse Bowden Ragsdale, Jr.

Sidney C. Reber



Miriam Rouse

William H. Sachs



Freshmen



Edward Clayton Settle III

Violet M. Shearwood



Betty Smith

Lucius Noell Smith, Jr.



Sarah Agnes Smith

Martha Couch Thomas



Frances R. Turner

Anna White



Wallace White

William Wiles



Edward C. Williams

Kathryn Williams



Sara Florence Williams

James A. Woodall

Special Students



Marie Boyd



John Francis Campbell



Curt Doernberg



Thomas C. Dozier



Ed Hartsfield



Ed Justice, Jr.



Mildred Burton Stansell



Mrs. Everett Summers



Dwight C. Swepton



Ben H. Troutman



Activities

TO THE EVENING COLLEGE STUDENTS
WHO WORK ALL DAY AND GO TO COL-
LEGE AT NIGHT, AND YET STILL FIND
TIME FOR HEALTHFUL EXERCISE AND
RECREATION, AND WARM SOCIAL
CONTACTS THROUGH GEC'S MANY
FINE ORGANIZATIONS AND EXTRA-
CURRICULA ACTIVITIES . . . TO THEM
THE FOLLOWING PAGES ARE DEDI-
CATED.





JEANNE JOHNSON, *President*

STUDENT COUNCIL

President JEANNE JOHNSON

Vice-President JIMMY McNABB

Secretary VADIE HONEA

Treasurer JACK DUNCAN

Miriam Rouse succeeded Vadie Honea as Secretary for the last quarter.

Bob Dale succeeded Jack Duncan as Treasurer after Jack left for the armed services.



Marshall Asher
Allie Barnes
Virginia Berry
Kathryn Cofer
Pat Cooke



Bob Dale
Jack Duncan
L. C. Duncan
Larry Evans
Donald Floyd



Johnny Forkner
Sam Franklin
Frank Hamilton
Mary Harrington
Vadie Honea



Jimmy Jernigan
Louise Johnson
Jan Keller
Bernie McKeown
Jim McNabb



Ralph Millsap
Buck Minor
Wallace Norris
F. H. O'Kelly, Jr.
Byron Pollitt



Cecil Pool
Annie Ruth Popham
Sue Riddle
Beth Rogers
Miriam Rouse



Louis Specht
Tom Stocks
Georgia Stone
Montie Elizabeth Tompkins
Cecil Turner



BILL HARTSFIELD, *Editor*



IRA ABERNATHY, *Business Manager*

THE NOCTURNE

STAFF

BILL HARTSFIELD	<i>Editor</i>
IRA ABERNATHY	<i>Business Manager</i>
RUTH BARRON	<i>Photography (Snap Shots)</i>
MAJOR WM. P. LAYTON	<i>Director of Publications</i>

ASSISTANTS

Jimmy Arendall	Wallace Norris
Bill Baxter	Beth Rogers
Jeannette Dozier	Miriam Rouse
Bruce Hafley	Jimmy Woodall
Jeanne Johnson	

Much of the credit for the 1943 Nocturne goes to the excellent ground-work done by Editor Jimmy McNabb and Business Manager Cecil Turner, who were called into service on April 9. Valuable assistance and advice was also given by Bob Dale, business manager for 1942, who is now Ensign Bob Dale, U.S.N.



Bob Dale



Jimmy McNabb



Cecil Turner

The Nocturne



Jimmy Arendall
Jeanne Johnson

Ruth Barron
Wallace Norris

Bill Baxter
Beth Rogers

Jeannette Dozier
Miriam Rouse

Bruce Hafley
Jimmy Woodall



Nocturne Photographer Gets a Line on "Vic" Barron

THE EVENING SIGNAL



BETH ROGERS, *Editor*

STAFF

- BETH ROGERS *Editor*
- DOROTHY STRANGE } *Associate Editors*
- FRED O'KELLEY }
- JEANNETTE DOZIER *Business Manager*
- BETTY SMITH *Associate Business Manager*
- MILLARD POSEY *Sports Editor*
- NELSON LOGAN *Make-Up Editor*
- RUTH BARRON *Photographer*

Major William P. Layton, *Director of Publications*

Dr. James E. Routh and Dr. George M. Sparks, *Faculty Advisors*

The Aim of the Signal is to record events of interest and importance in the school. In 1942-43 Editor Rogers played up pictures, instituted a cartoon-of-the-month and gave much of the limelight to students in the service.

The Evening Signal



Ruth Barron Jeannette Dozier Isaac Habif Bruce Hafley Anne Hoag Louise Johnson

REPORTERS . . . EDITORIAL ASSISTANTS . . . ADVERTISING ASSISTANTS . . . THESE ARE THE PEOPLE WHO BURN THE MIDNIGHT OIL TO SEE THAT THE EVENING SIGNAL COMES OUT ON TIME.



F. H. O'Kelley Sidney Pazol Millard Posey Betty Smith Dorothy Strange

INTERFRATERNITY COUNCIL



MARY JANE TURNER, *President*

OFFICERS

MARY JANE TURNER *President*

JEANNE JOHNSON *Vice-President*

JUNE WILSON *Secretary-Treasurer*

The representatives of the seven member organizations of Inter-Fraternity Council meet bi-monthly and seek close harmony between sororities, fraternities, and other groups in the school. The Council grants meeting and social dates, and controls pledging activities of organizations.

REPRESENTATIVES

ALPHA KAPPA PSI
William J. Thomas
Sam Franklin

DELTA LAMBDA SIGMA
Madge Moore
Louise Johnson

DELTA SIGMA PI
Bob Dale
Jimmy McNabb

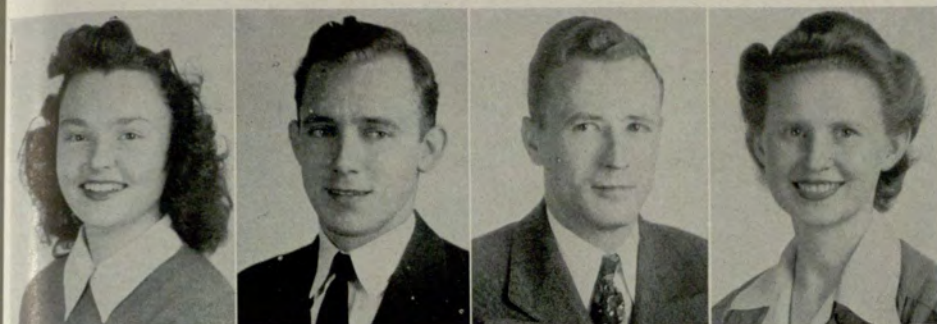
KAPPA THETA
Catherine Ivey
Lena Wagnon

PHI CHI THETA
Ruth Isakson
Inez Kitchens

STUDENT COUNCIL
Virginia Berry
Miriam Rouse

VENETIAN SOCIETY
Jan Keller
Wallace Norris

Interfraternity Council



Virginia Berry

Bob Dale

Sam Franklin

Ruth Isakson



Matilda Ivey

Jeanne Johnson

Louise Johnson

Jan Keller



Inez Kitchens

Jim McNabb

Madge Moore

Wallace Norris



Miriam Rouse

Bill Thomas

Norma June Wilson

Lena Wagnon



Thelma Sorrow

DELTA MU DELTA

OFFICERS

INEZ KITCHENS	<i>President</i>
LOIS DOZIER	<i>Vice-President</i>
JEANNE JOHNSON	<i>Secretary</i>
EMILY ROBERTS	<i>Treasurer</i>

ROLL

1943		
Fred L. Windham	Caroline Reid	Roger Dozier
1942		
Edna Cooper	Claire Manners	Elizabeth Ramsden
Worth P. O'Dell	Inez Kitchens	Lois Dozier
Harold Duncan	William Bromberg	Elizabeth Allen
	Jeanne Johnson	
1941		
Hans H. Butzon	Kay Tabor	Fideles Kloeckler
Miriam J. Clarke	E. Elwood Wright	Emily Roberts
Polly Ramsey	Edwin M. Clark	James T. Wiley, Jr.
1940		
Jack M. Adams	Willathea J. Jackson	Tilden L. Brooks
Agnes B. Barnett	Henry T. Smith	Mary Ford
John B. Clark	Kay Alling	Sidney K. Johnson
	Irene Strickland	
1939		
Catherine Baker	James Davis	James H. McGuire
Timothy Bullard	H. Talmadge Dobbs	Ordry Palmer
Maymi Walker Chandler	Pickett Hynes	H. Mae Tankersley
D. Rebecca Williams	Harold Willingham	
1938		
Elizabeth Adams	Alice S. Downing	Thomas A. Seals
E. W. Aldredge	Mary Hammond	H. Earl Strying
Albert P. Clark	Robert C. Lowe, Jr.	M. Christine Wing
1937		
Marcia Baker	Robert Kimsey	Ben Overstreet, Jr.
Clarence H. Hill	T. M. McClellan	Helen Tucker Thompson
Ewell Y. Jackson	C. Ed Martin	R. Durwin White
1936		
E. J. Barber	A. D. Gregory, Jr.	Susie Sudderth
Tallulah Davis	Hilda Isakson Jackson	George Wing
Lloyd C. Ginn	Robert Johann	
1935		
Lamar G. Baker	Elizabeth Curtis Dexter	Robert Strickland
Reuben G. Crimm	Francis M. Osteen	Ted J. Whitehead
	Maurice Strickland	
1934		
Mildred Chesnut Brown	J. W. Goldsmith	George Manners
Francis Duggan	M. D. Harper, Jr.	Antha Mulkey
1933		
F. C. Brandes	N. E. Boswell	B. F. Wells, Jr.
	Catherine Martin Duggan	
1932		
T. W. Duncan	J. Harry Gault	Ruth Rogers
1931		
Fae Allen	C. Roy McCormack	C. S. Spinks
W. W. Aycock	H. C. Kitchens	Bernard Suttles, Jr.
E. H. Bishop	George E. Parker	M. Guy Swanson
Mary Cheatam Buchholz	Norman E. Pettis	M. W. Swint
L. C. Evans	John M. Reed, Jr.	C. Z. Zellar
Richard A. Hills	H. L. Robinson	J. W. Zuber, Jr.

Delta Mu Delta



INEZ KITCHENS, *President*

DELTA MU DELTA

THETA CHAPTER

Since the installation of Theta Chapter, June 9, 1931, Delta Mu Delta has done much to promote a higher standard of scholarship in the Evening College. This fraternity is to promote higher scholarship in subjects set forth in the curriculum of the Evening College; to stimulate interest in the advancement of scholarly ideals; and to recognize and reward scholastic attainment in the studies as set forth above.

The election of members, selected from the Graduating Seniors, together with two undergraduates, honors those students who have successfully passed the rigid requirements for this, the only national scholarship fraternity in the Evening College.

Through the Delta Mu Delta Honor Roll, published each quarter, the records of students of outstanding scholastic rating are acknowledged.



JEANNE JOHNSON, *Secretary*

INTRAMURAL KEY



IRA ABERNATHY, *President*

OFFICERS

IRA ABERNATHY *President*

JIM McNABB *Vice-President*

McCOY WHITE *Secretary*

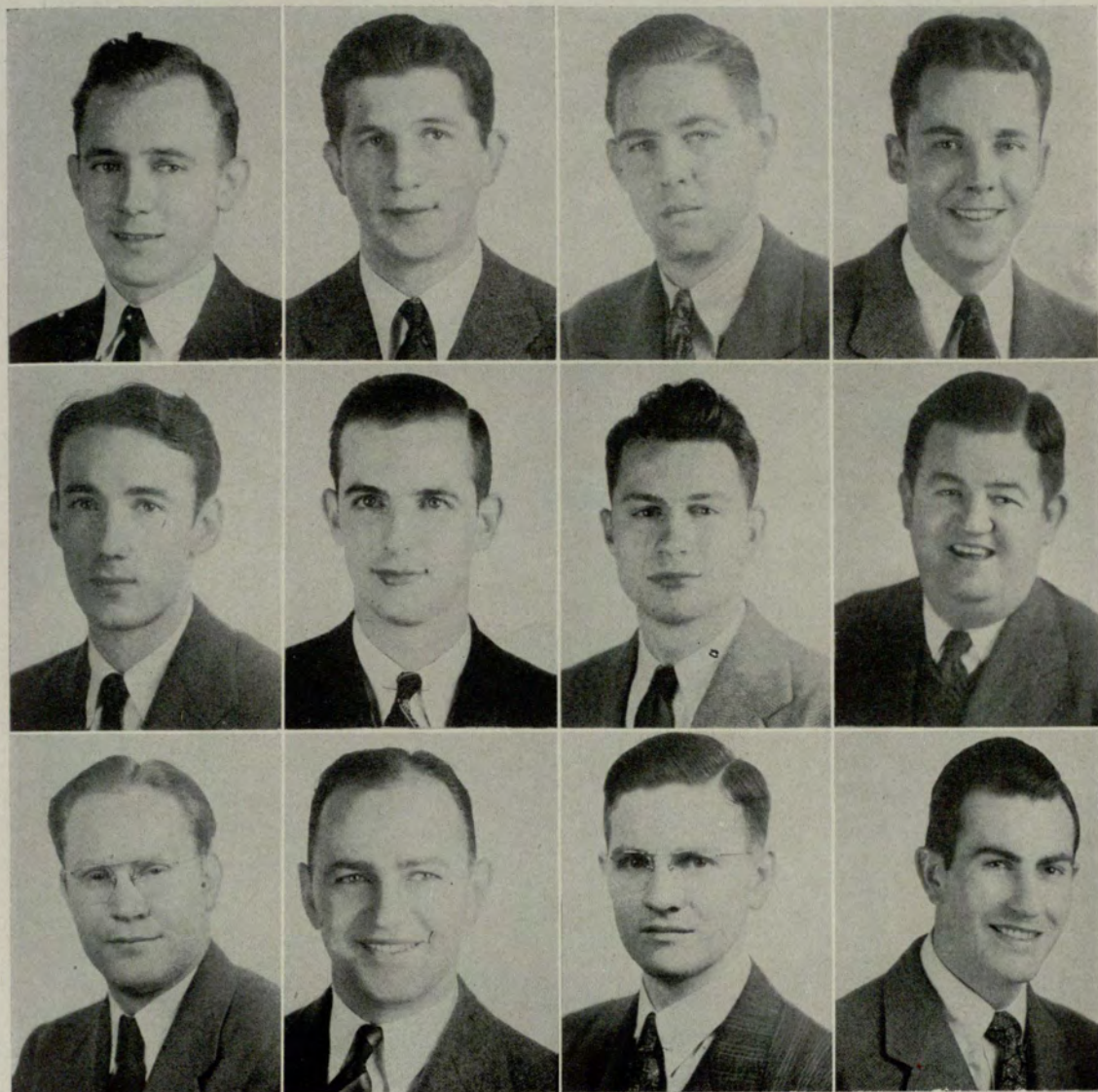
FRED WINDHAM *Treasurer*

AIMS OF INTRAMURAL KEY

- A closer understanding and cooperative spirit among students, and between the student body and the administration.
- An aspiration for greater intellectual achievement.
- A study of student problems to the end that all student life may be enriched, and the progress and best interests of the Georgia Evening College be stimulated and promoted.

Members of Intramural Key are chosen on the basis of all-round ability in scholarship, leadership and an interest in The Evening College. An organization of limited membership in ordinary times, Intramural Key was greatly affected by having most of its members called into the armed services. Activity was thus necessarily curtailed, and consisted chiefly in sponsoring the Orientation suppers, held once each quarter, and in helping the administration to register new students. Intramural Key looks forward to the return of its members, at which time the organization expects to take an active part in reorganizing those activities which have suffered because of the war.

Intramural Key



Bob Dale
Jimmie Laxson
Cecil Turner

Sidney Feldman
Jim McNabb
McCoy White

Donald Floyd
Richard O'Callaghan
Fred Windham

Jan Keller
Charles Snow
Wallace Norris

CRIMSON KEY



CAROLINE REID, *President*

OFFICERS

CAROLINE REID *President*

FLORENCE CAMP *Vice-President*

INEZ KITCHENS *Secretary*

ANNABELLE HENRY *Treasurer*

FOUNDED AT GEORGIA EVENING COLLEGE JANUARY,
1935

To promote a closer understanding between the Administration and the students of the Evening College, and to cooperate with the faculty and other organizations of the school to the end that there may be fostered and maintained the highest standards of scholarship, social activities, and moral ideals among the women students.

Crimson Key



Allie Barnes

Jeanette Dozier

Annabelle Henry

Jeanne Johnson

Inez Kitchens

Leona McMichael

Sue Riddle

Donna Roberts

Beth Rogers

Norma June Wilson

Dorothy Strange

Laura Ruth Webb

MEMBERS

Allie Barnes
 Mary Cherry
 Jeanette Dozier
 Lila Mae Harrison
 Annabelle Henry
 Eloise Henry
 Jeanne Johnson
 Inez Kitchens

Leona McMichael
 Sue Riddle
 Donna Roberts
 Beth Rogers
 Norma June Wilson
 Dorothy Strange
 Laura Ruth Webb

ALPHA KAPPA PSI



JAN KELLER, President

Fraternity Song

1

*Should auld acquaintance be forgot
And Alpha Kappa Psi?
Shall we pass slowly out of view
Without regret or sigh?*

2

*We'll work with might and main to win
Our mead of daily praise—
And ne'er shall we in later years
Forget fraternal days.*

CHORUS

*For Alpha Kappa Psi, my boy—
For Alpha Kappa Psi—
We'll bless the days that we have spent
In Alpha Kappa Psi.*



Beginning Top Left: George Camp, Jr., David A. Cason, Jr., Frank Patton Cooke, Luke J. Darnell, Robert T. Davis, Donald Floyd, Samuel O. Franklin, Maxwell Harrell, James C. Laxson, Raymond C. McKay, Joe H. Merrill, Jr., Floyd Moon, Thomas Hall Norman, Wallace E. Norris, Richard Hayes O'Callaghan, F. H. O'Kelley, Jr., Tracy O'Neal, Cecil A. Poole, Millard Johnson Posey, Lucius Noell Smith, Jr., William M. Suttles, Robert Tabor, Bill Thomas, Bennett F. Tuck, Jr., L. Cecil Turner, Thomas Jerome Weatherly, Jonathan Edward Williams, Joseph H. Wolfe.

Alpha Kappa Psi Members in the Armed Services

ARMY

1st Lieutenant Walter W. Aycock
 Private Chas. H. Bailey
 Captain Oscar Bergstrom
 Lt. Colonel Robt. H. Betts
 2nd Lieutenant Robt. C. Blair, Jr.
 Private James A. Blissit
 1st Lieutenant Harold P. Bloodworth
 Private Raleigh G. Bryans
 Captain Edward S. Bullock
 Corporal John D. Caraway, Jr.
 Private John E. Cash
 1st Lieutenant J. Wilson Cash
 2nd Lieutenant John A. Cason
 Private Otis L. Childs, Jr.
 Captain Newman Corker
 Private George C. Corrigan
 1st Lieutenant Louis W. Corrigan
 Corporal Chas. E. Cotton
 Aviation Cadet Norman J. Cowart
 2nd Lieutenant Chas. T. Darnell, Jr.
 Captain Wilbur von M. DeLoach
 Glider Pilot Cadet D. O'Connell Dougherty
 Private John R. Driskell
 Private Samuel O. Franklin
 2nd Lieutenant Hugo R. Franz, Jr.
 2nd Lieutenant Walter A. Freeman, Jr.
 2nd Lieutenant Robert Olin Fricks
 1st Lieutenant A. G. Garbutt, Jr.
 1st Lieutenant Karl E. Gemes
 Aviation Cadet Hugh J. Hallman
 Private F. Maxwell Harrell
 Private John B. Harris, Jr.
 1st Lieutenant Ray V. Hartwell, Jr.
 Sergeant David J. Harwell, Jr.
 Glider Pilot Cadet Wm. C. Hatcher, Jr.
 Major Louis A. Hawkins, Jr.
 1st Lieutenant Clarence H. Hill
 Staff Sergeant H. C. Huddleston
 Private C. Gordon Huey
 2nd Lieutenant DeWitt C. Hunt, Jr.
 Sergeant Clyde H. Jackson
 Private E. J. Jackson
 Technical Sergeant Millard A. Jenkins
 Captain S. K. Johnson
 Captain Chas. R. Jordan
 Major D. Donald Keller
 Private W. Jan Keller
 Staff Sergeant Chas. F. Kent
 2nd Lieutenant Richard E. Landis
 Warrant Officer Wm. Albert Lee
 Captain Samuel B. Ledbetter
 Sergeant Archie L. Lindsey
 Captain Littleton L. Little
 Private Wm. H. Mahone
 Private Floyd J. Moon
 Captain Ralph C. Moor
 Private John A. Moore
 1st Lieutenant Chas. B. Montgomery
 Private Ray McCay
 Aviation Cadet Chas. A. McClure
 Captain C. Roy McCormack
 1st Lieutenant Edwin G. McDonald
 Major Robt. M. McFarland, Jr.
 1st Lieutenant Stewart McGinty, Jr.
 Captain James H. McGuire
 Captain H. William Norman
 Private Thomas H. Norman
 2nd Lieutenant J. Fred O'Kelley
 Private Tracy W. O'Neal, Jr.
 Lt. Colonel Arthur Park
 1st Lieutenant Edgar J. Perkerson, Jr.
 Private Cecil A. Pool
 Private 1st Class Wm. A. Powell
 Sergeant Joseph Redwine, Jr.
 Captain Preston B. Seanor
 Staff Sergeant Henry W. Sharp

1st Lieutenant Philip J. Shuttleworth
 Private Robt. E. Simmons
 Private Wm. S. Simmons
 Private Arthur P. Stanton
 1st Lieutenant Gilbert M. Stockton
 2nd Lieutenant Harold L. Tabor
 Corporal Wm. J. Thomas
 2nd Lieutenant Craig A. Tippens
 Private Bennett F. Tuck, Jr.
 Private L. Cecil Turner
 2nd Lieutenant Donald K. White
 1st Lieutenant Thos. L. Wilson
 2nd Lieutenant John C. Young
 2nd Lieutenant Wm. T. Young
 2nd Lieutenant Kenneth R. Zimmerman
 Corporal Virgil D. Zink

NAVY

Lieutenant J. Cleve Allen
 Storkeeper 2/C Wm. H. Allen
 Seaman Dougald M. Avera
 Ensign Jack T. Ball
 Ensign Marshall M. Banks
 Lieutenant Tilden L. Brooks
 Ensign Frank A. Brown
 Lieutenant J. Culver Caraway
 Ensign Robt. H. Clark
 Ensign Geo. R. Edwards, Jr.
 Lieutenant Roy T. Fricks
 Lieutenant W. L. Gordy
 Chief Specialist T. W. Harrison
 Ensign Ollie E. Hickman, Jr.
 Lieutenant John S. Hill
 Ensign Robt. C. Lowe, Jr.
 Lieutenant (JG) Henry A. Maddox
 Lt. Commander Sam D. Murray
 Mach. Mate 1/C M. Louis McCormack
 Ensign Thos. L. Nalley
 Commander Thos. W. Noel
 Midshipman Richard H. O'Callaghan
 Lieutenant Alton H. Parker
 Lieutenant O. J. Parker, Jr.
 Lieutenant John F. Pidcock
 Lieutenant (JG) Edward A. Pierce, Jr.
 Storkeeper 2/C George C. Pope
 Seaman Millard J. Posey
 Lieutenant Robt. L. Reeves
 Ensign A. Louis Rogers, Jr.
 Midshipman Carl N. Simpkins, Jr.
 Seaman James G. Smith
 Aviation Cadet L. Noell Smith, Jr.
 Ensign Raymond W. Stanley
 Yeoman Cal C. Steed
 Yeoman 2/C Albert Roy Trippe
 Chief Yeoman Robert W. Weeks
 Yeoman 2/C Hugh B. Williamson
 Ensign Walter C. Winfree
 Av. Ord. Man 3/C Otis Ed Worley, Jr.

COAST GUARD

Ensign Walter R. Benson

MARINES

Captain Cecil A. Jamison
 Private 1st Class James C. Laxson
 Private 1st Class Wm. M. Suttles
 Private 1st Class Thos. J. Weatherly

CIVIL AIR PATROL

Clifford B. Zimmerman

HONORABLE DISCHARGE

Private 1st Class-OCS Wm. T. Jordan



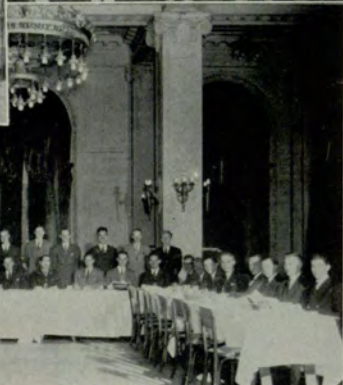
ROBERT M. DALE, *Headmaster*

DELTA SIGMA PI

Delta Sigma Pi is a professional fraternity organized to foster the study of business in universities; to encourage scholarship and the association of students for their mutual advancement by research and practice; to promote a closer affiliation between the commercial world and students of commerce; and to further a higher standard of commercial ethics and culture and the civic and commercial welfare of the community.

Officers

At the Lodge



They Serve

*Center
Deltasig Lodge*

Initiation Banquet



Jimmy Welch



McCoy White



Fred Windham



Jimmy Woodall



Francis Wright



Tom Abraham
 Jimmy Arendall
 Marshall Asher
 Victor Barron
 Bill Baxter



Ben Binford
 Hogan Buford
 LaRue Bullard
 Luther Burroughs
 Ted Byers



Howard Clark
 Don Coffee
 Jimmy DeLay
 Bill DeLoach
 Nathan Douglas



Jack Duncan
 L. C. Duncan
 Larry Evans
 Lewis Green
 Frank Hamilton



Jim Hardy
 Bill Hartsfield
 Ernest Hicks
 Frank Humphries
 Frank Inman



Jimmy Jernigan
 Emory Johnston
 Phillip Maffett
 Bill Marr
 John McChesney



Bernie McKeown
 Jimmy McNabb
 Jack McNeill
 Buck Minor
 Jack Morris



Ted O'Callaghan
 Ernest Pegram
 Byron Pollitt
 Jesse Roach
 Buster Stewart



WALLACE E. NORRIS, *President*

VENETIAN SOCIETY

WALLACE NORRIS *President*

JAN KELLER *Vice-President*

BEN TUCK *Secretary*

MCCOY WHITE *Treasurer*

The Venetian Society, under the able leadership of Wallace Norris, continued in its activities determinedly up until the very end of the school year, at which time, nearly all its members having gone into the armed services, it was decided that it would be in the best interests of the club to disband for the duration.

The purpose of the Venetian Society is to foster in every possible way an unwavering bond of fellowship among its members and the student body of the Georgia Evening College. It shall endeavor to create a better social, educational, and civic relationship among members and students.



LENA WAGON, *Sponsor*

Venetian Society



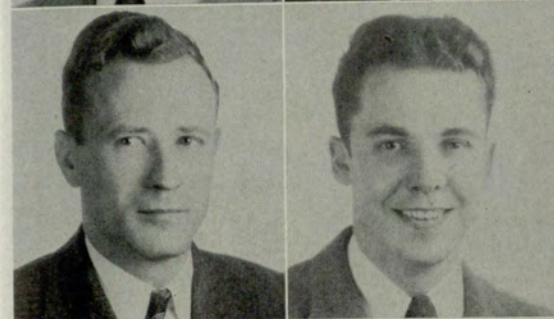
Hogan Buford

R. A. Christopher



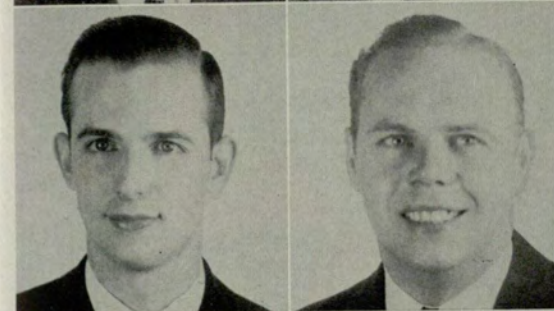
Jack Duncan

L. C. Duncan



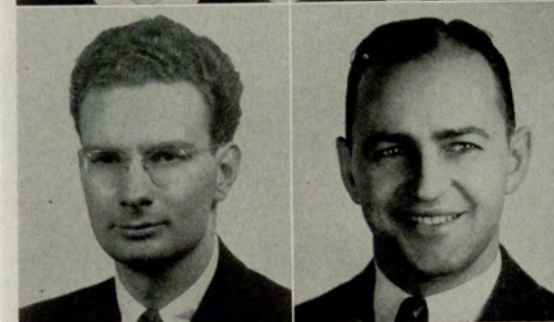
Sam Franklin

Jan Keller



Jim McNabb

Millard Posey



Ben Tuck

McCoy White

PHI CHI THETA



RUTH ISAKSON, *President*

OFFICERS

RUTH ISAKSON *President*
 INEZ KITCHENS *Vice-President*
 FLORENCE CAMP *Treasurer*
 MARTHA DOYLE . *Corresponding Secretary*
 MADGE MOORE . . . *Recording Secretary*

UPSILON CHAPTER

Installed April 9, 1929

Founded Chicago, Illinois, June 16, 1924

Colors LAVENDER AND GOLD
Flower LAVENDER IRIS
Publication "THE IRIS"

Upsilon Chapter and Alumna at Madison, Wisconsin



Six new sisters . . .

Phi Chi Theta



Martha Doyle
Anne Murphy

Annabelle Henry
Caroline Reid

Inez Kitchens
Thelma Sorrow

Muriel Mahaffey
Dorothy Strange

Madge Moore
Laura Ruth Webb

MEMBERS

Florence Camp
Elizabeth Cathcart
Martha Doyle
May Lou Durham
Ruby Harrelson
Annabelle Henry
Eloise Henry
Ruth Isakson
Inez Kitchens
Muriel Mahaffey
Edna C. McGrath

Johnnie Miller
Madge Moore
Anne Murphy
Virginia Murray
Genevieve Murrelle
Thelma Sorrow
Caroline Reid
Dorothy Strange
Elizabeth Tatum
Laura Ruth Webb
Rachel Whatley

PLEDGES

Frances Akins

Elizabeth Turner

Emily Webster

To promote the cause of higher business education and training for all women, to foster high ideals for women in business careers, and to encourage fraternity and cooperation among women preparing for such careers.

DELTA LAMBDA SIGMA



MADGE MOORE, *President*

OFFICERS

- MADGE MOORE *President*
LOUISE JOHNSON *Vice-President*
DOROTHY STRANGE *Recording Secretary*
MARTHA CASON *Corresponding Secretary*
PATRICIA HEAD *Treasurer*
BETTY WILLIAMS *Asst. Treasurer*
MARTHA NALLEY *Sergeant-at-Arms*

PURPOSE

For the development of the nobler qualities of the mind and the attainment of individual and social excellence among its members.

SORORITY SONG

By Ethel Cantrell, 1940

*That we may nobler, richer grow,
In concepts of the mind—
That we may lend to all we know
A grace entirely thine.*

*That we may to each other show
A friendship never ending,
We dedicate ourselves to thee—
Our Delta Lambda Sigma.*



Officers of Delta Lambda Sigma



*Hen Party, Georgia Power Company
Camp, Summer '42*



Virginia Berry
Tony Brusch
Marian Frances Callaway
Martha Cason



Vivian Clowdis
Betty Cooper
Mary Cox
Evelyne Crawford



Jeanette Dozier
Ruth Fortner
Patricia Head
Vadie Honea



Jeanne Johnson
Louise Johnson
Frankie Kirkland
Leona McMichael



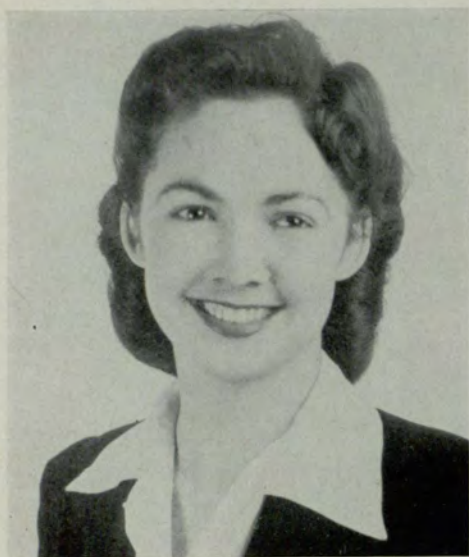
Martha Nalley
Isabel Rapier
Caroline Reid
Thelma Sorrow



Georgia Stone
Dorothy Strange
Mary Jane Turnet
Betty Williams

Not Shown:
Ruby Harrelson
Bobbie Turner

KAPPA THETA



MATILDA IVEY, *President*

OFFICERS

CATHERINE MATILDA IVEY . . . *President*

MELROSE BLACK . . . *First Vice-President*

JUNE WILSON . . . *Second Vice-President*

KATHRYN COFER . *Corresponding Secretary*

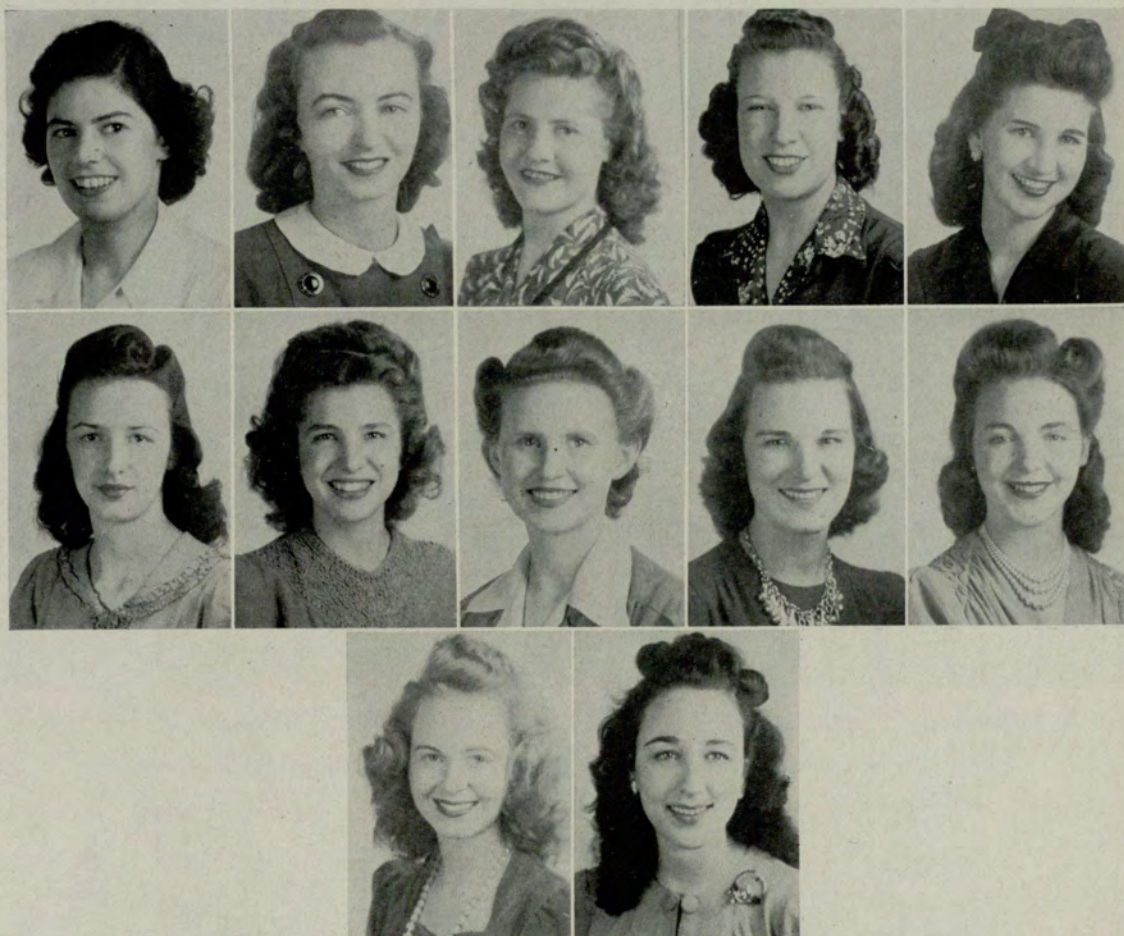
ALLIE BARNES . . . *Recording Secretary*

LENA WAGNON *Treasurer*

Kappa Theta was founded at Georgia Evening College January 24, 1937, for the purpose of aiming as a sisterhood and as individuals to strengthen social ideals in their highest levels, to secure the fullest in understanding and to enjoy the finest in fellowship.



Kappa Theta



Reading from top left: Allie Barnes, Melrose Black, Ruby Blissitt, Janie Bee Chase, Kathryn Cofer, Elaine Cole, Juanita Couch, Ruth Isakson, Annie Ruth Popham, Miriam Rouse, Lena Wagon, June Wilson.

SPEAKERS CLUB



PRESIDENT

OFFICERS

IRA ABERNATHY *President*

JIMMY DELAY *Vice-President*

BILL HARTSFIELD *Secretary*

MARSHALL ASHER *Treasurer*



Dr. R. R. Hollingsworth
Faculty Member



John McChesney



Frank Humphries



Bill DeLoach

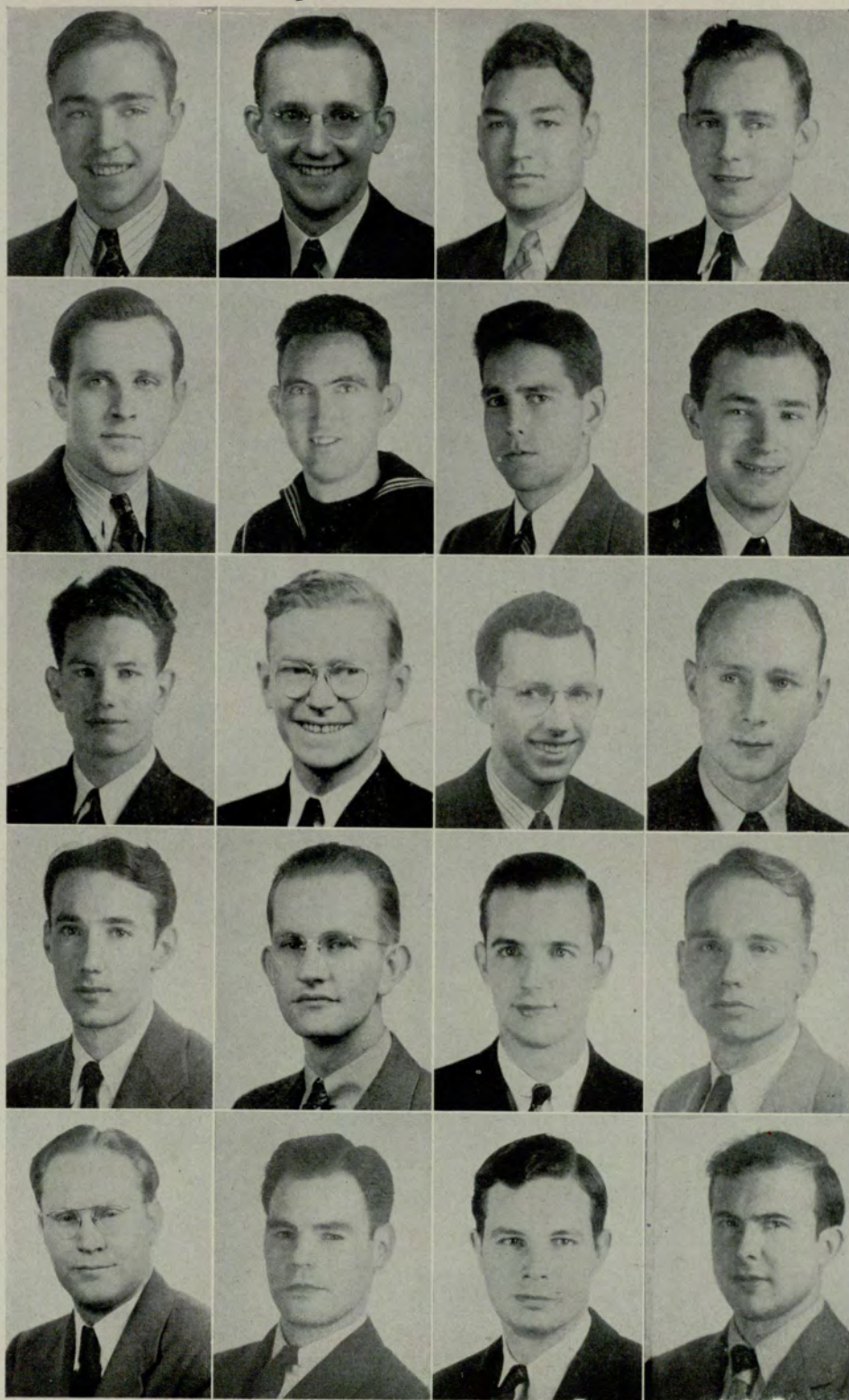


Phillip Maffett



MEETING

Speakers Club



Beginning top, left to right: Marshall Asher, Hogan Buford, Luther Burroughs, Bob Dale, James DeLay, Jim Dillard, L. C. Duncan, Larry Evans, Johnny Forkner, Frank Hamilton, Bill Hartsfield, Charlie Hollingsworth, Jimmy Laxson, Bernie McKeown, Jim McNabb, Ted O'Callaghan, Cecil Turner, Ed Williams, Joe Wolfe, Francis Wright.

Glee Club

The two-fold purpose of the Georgia Evening College Glee Club this year has been, first, to uphold the brilliant record of both artistic and financial successes of the past club years and, second, to keep alive the unusual spirit of camaraderie which has been the outstanding characteristic of the club since its organization.

In this spirit the Glee Club presented as its annual show, Romberg's superb operetta, "New Moon," starring our own Hazel Poss and Walter Russell, outstanding young American baritone. Under the inspiring musical direction of Mr. John D. Hoffman and the untiring dramatic leadership of Mrs. A. D. Gregory, a show of which the whole school can be proud, played for the entire week of April 12-16 at the Erlanger Theatre to packed and enthusiastic audiences.

Other activities of the year have centered about our bit in the war effort. The club made a trip to the Lawson General Hospital to give excerpts from the show for the men who were unable to see the downtown performances. Mention should also be made of the fact that the whole theater was turned over to service men and women for the opening night of "New Moon." The club will again this year, as in the past, be a part of the Evening School Commencement Program.

CHARLES SNOW, *President*

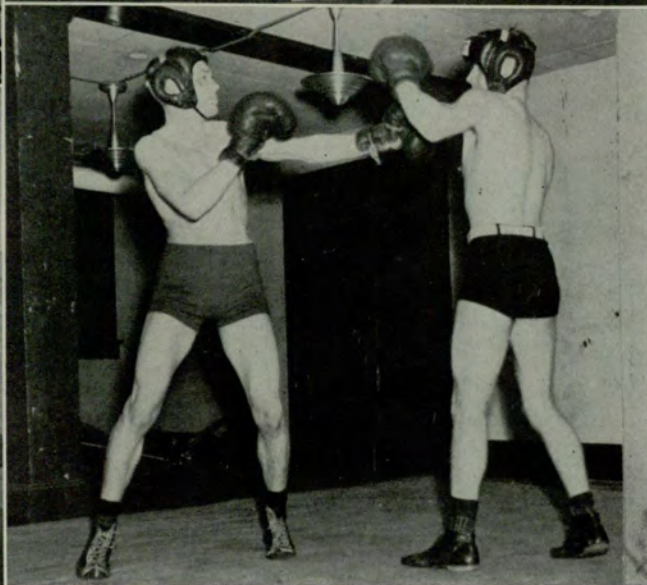
GLEE CLUB OFFICERS

CHARLES SNOW	<i>President</i>
FRED O'KELLEY	<i>Vice-President</i>
FRANK CLOUDT	<i>Secretary</i>
CHARLES BAILEY	<i>Treasurer</i>
JOHN BOWLING	<i>Historian</i>



Rehearsal

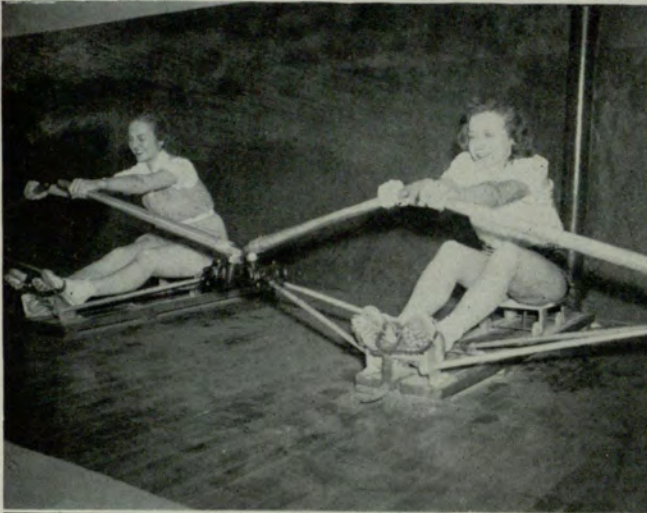
Sports



TOP: Major Layton, Gymnastic Supervisor.
MIDDLE: GEC Girls pedal to health.
BOTTOM: GEC Basketball Team, coached by Millard Posey.

TOP: Wallace White and partner practice tight-rope walking in Gym.
BOTTOM: Boxing emphasized at GEC.

Sports



TOP: Major Layton presents trophy for tennis championship to Donald Floyd.

MIDDLE: Gym Classes.

BOTTOM: Evening College Enjoys Rifle Range.

TOP: Boxing Class.

MIDDLE: GEC Girls Basket Ball Team.

BOTTOM: Girls Calisthenics Class in Gym.

Sports

One of the highlights of the year 1942-43 was the installation of an obstacle course used in the school's physical fitness program. The training given the Enlisted Reserve Corps men through the use of the obstacle course enabled these men to enter the armed forces in much better condition, since physical education was required of all the ERC boys. The gymnasium accommodated large groups of these boys each Monday night until they were called into active service in April. The departure of the ERC's left a serious gap in the athletic program of the school. However, there were some noteworthy items in the year, both before and after the ERC boys left us.

BASKETBALL

The Basketball team piled up an impressive record under the able leadership of Coach Millard Posey. The Owls finished the season with 10 wins out of 17 games, finishing third the first half of the season in the Walthour City League, and second the last half in the same league. In the City tournament, the Owls lost in the quarter-finals to the Cochran Field Fliers, by the score of 48 to 30. The Fliers then went on to win the tournament. The members of this year's team were: Thomas Norman, Sidney Feldman, Noell Smith, Millard Posey, Coach and Captain; Wallace Norris, Ed Williams, Tracy O'Neal, Charles Wood, Frank Fletcher, Al Kent, Paul Hickman, and Jan Keller, Manager. At the end of the school year, only Wallace Norris, Ed Williams and Al Kent remained in school, the rest having gone into the armed forces.

TENNIS

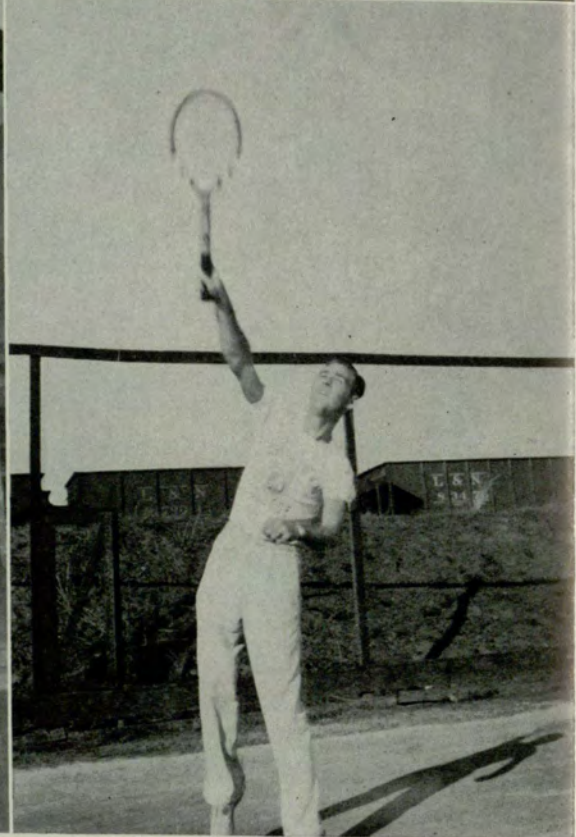
A tennis tournament was held in the fall quarter, and was won by Donald Floyd after a victory over Charles McClure. Floyd is 1942 State Champion. Due to the absence of so many star players, the tennis team did not have an extensive schedule, but hopes are high for the reorganization of the team after the war.

OTHER SPORTS

The game of ping-pong gained considerable headway during the year. Included in the varied program for the first time during the 1942-43 term, the game started with a single table in a small room in the physical education department, and grew so rapidly that it became necessary to place several tables in the refectory, where a game is usually found in progress. A tournament was held during the fall quarter, in which Richard O'Callaghan and Marvin Nicholson were the finalists. The final match, however, was never played because of the fact that Nicholson went into the armed service.

Bowling also enjoyed its usual popularity until the ERC boys left. A league was organized in the fall quarter and much keen competition was seen.

Snaps



TOP LEFT . . . *Seamen Salute.*
 BOTTOM LEFT . . . *Evening College, in the person
 of Hogan Buford, debates Mercer University.*

TOP RIGHT . . . *Thelma Sorrow conquers the
 obstacle course.*
 BOTTOM RIGHT . . . *Champion Don Floyd serves
 a sizzler.*

ANSLEY HOTEL

Just around the corner from the Evening College. Ideally located for Fraternity, Sorority and other organization banquets, dinners, etc.

L. L. TUCKER,
Manager.

A DINKLER HOTEL

We congratulate the

GEORGIA EVENING COLLEGE

**upon its splendid director, faculty
and student body, and wish for
all the continued success
so richly deserved.**

RIALTO THEATRE

Nothing But Good Food
at Low Prices

DAVIS BROTHERS RESTAURANT

104 Luckie Street, N.W.

ATLANTA

If you are not a Satisfied Customer,
your check is on the House

"You'll experience

That Extra Something!"

DRINK
Coca-Cola 5¢
TRADE-MARK



DON'T CUSS—PHONE US

PRIOR TIRE CO.

Peachtree and Pine Sts.

WA. 8866

WE NEVER CLOSE



COMPLIMENTS

AND BEST WISHES

FROM

WINECOFF HOTEL





GOLD SHIELD

Launderers and Cleaners

TRIO
AMERICAN
PIEDMONT

CAPITAL CITY
DECATUR
MAY'S

TROY
GUTHMAN
EXCELSIOR

ATLANTA, GEORGIA



MEET YOUR FRIENDS

at the

**MELBA
CAFETERIA**

Luckie at Forsyth Street



COMPLIMENTS

OF

J.P. ALLEN & CO.
Atlanta



More Snapshots



TOP: Jean Johnson, President of the Student Body
BOTTOM: Marshall Asher receives Retail Credit Company Award

Snaps

HOMECOMING BANQUET

Inevitable Speeches



Dancing



*John Hoffman leads
Glee Club Choir*



University System of Georgia

University System of Georgia Center, in Atlanta

EVENING COLLEGE

and

JUNIOR COLLEGE DAY CLASSES

CO-EDUCATIONAL

Day and evening classes are given to meet the needs of students as follows:

1. Those who wish to take work for University credit toward the degrees of Bachelor of Arts, Bachelor of Science in Commerce, Bachelor of Arts in Education, and Bachelor of Science in Education.
2. Students who wish to receive the degree of Bachelor of Commercial Science, through the Evening College, for work done entirely in the University Center in Atlanta.
3. Students who wish to complete work for a Junior College Diploma of graduation from the University System of Georgia in the fields of Bachelor of Arts, Bachelor of Science, Bachelor of Arts in Education, Bachelor of Science in Commerce, and Bachelor of Science in Education.
4. Students who wish to complete work for a Certificate in Business Administration or for a Certificate in Secretarial Training.
5. Special students taking selected courses and not having in view an extensive program of study.

Earn While You Learn . . . Learn While You Earn

You of G. E. C. will agree with us that these are not only busy days, but busy nights, too.

For, like us, you serve by day and far, far into the night.

It's tough going, sometimes, but it's worth while.



ENJOY A DELICIOUS
LUNCHEON AT . . .

ELLEN RICE TEA ROOM

63½ Poplar Street, at Forsyth

JA. 4181

We Are Glad to Serve Evening
Parties, Dinners, Etc.

FULTON SUPPLY CO.

INDUSTRIAL, TEXTILE,
CONTRACTORS' SUPPLIES
and MACHINERY

342 Nelson Street, S.W.

MAin 3400

ATLANTA, GEORGIA

GORDON'S



Fresh

POTATO CHIPS

SALTED PEANUTS

PEANUT BUTTER SANDWICHES

CAKES - NUTS - CANDIES

Gordon Foods, Inc.

TRUCKS SERVING THE SOUTH

Cordially Yours . . . HOLZMAN'S

"Yours" for the very best in jewelry
and gift items—

"Yours" for the most reasonable
prices—

"Yours" for courteous, friendly
service—

On this, our 46th anniversary,
Christine Wing, Evening Col-
lege graduate, invites you to
visit us and make Holzman's
"Your" gift headquarters.

HOLZMAN'S

29 Broad Street, S.W.

COMPLIMENTS
OF

WOODING'S CAFETERIA

Serving Time:

6:30 to 9:15 A.M.

10:45 A.M. to 2:15 P.M.

5:00 to 7:30 P.M.

WE CATER
TO BANQUETS

J. P. STEVENS ENGRAVING COMPANY

Wedding, Reception and
Visiting Cards
Personal Stationery

110 Peachtree St. Atlanta, Ga.

**Make BRYANT Headquarters for
Your Entire Office Needs**

Complete Line of
OFFICE SUPPLIES—PRINTING
LOOSELEAF SYSTEMS
STEEL FILING EQUIPMENT
POSTURE CHAIRS

**BRYANT LITHOGRAPHING
COMPANY**

136½ Marietta St.
ATLANTA, GA.

MA. 2800

HURST DANCING SCHOOL

594½ Peachtree Street, at North Avenue
HEmlock 9226

*An Institution Where Refinement
Prevails*

Established in Atlanta Over 43 Years

PRIVATE OR CLASS LESSONS

FREE SAMPLE LESSON BY APPOINTMENT

"WE KNOW HOW"

Regular dances Wednesday and
Saturday, 9 P.M.—"No Breaking"

Hall and Orchestra available for rental

Today Social Dancing Is Considered a Part
of Your Education

HARRY BARFIELD COMPANY

MASTER PRINTERS

Telephone MAin 3430

142-4 Spring Street, N.W.

Atlanta, Georgia

PICTURE FRAMING . . .

PHOTO FRAMES — BRIC-A-BRAC



Art & Frame Shop

56 BROAD ST., N.W.

WA. 8219

The delivering of Quality Apparel
by Marcus' for over 60 years
consistently cannot possibly
be accidental.



MARCUS CLOTHING COMPANY

Men's Wear Specialists

62 Peachtree St. 61 North Broad St.

ATLANTA, GA.



Compliments of

Louis Bates

NEW YORK LIFE

INSURANCE CO.





WE ARE ORGANIZED TO SERVE YOU
IN EVERY WAY THAT PRINTING
AND LITHOGRAPHING CAN ASSIST
IN MAKING YOUR SCHOOL AN-
NUALS EFFECTIVE . . . HERE THE
CAPACITY TO PRODUCE AND THE
SPIRIT TO SERVE ARE COORDI-
NATED TO YOUR FULLEST ADVAN-
TAGE.



The Stein Printing Company

161 Luckie Street, N. W.

ATLANTA, GEORGIA



THE DRAUGHON SCHOOL OF COMMERCE

"IN QUEST OF QUALITY"

Entrance Requirements:

High School Graduation and Character References

All Graduates Placed in 1942 and More Than 2,000 Calls Which Could
Not Be Filled

PEACHTREE AT BAKER ST.

ATLANTA, GA.

To our advertisers—our friends in business who
have so generously contributed their advertisements
to this ANNUAL report—we wish to express our
sincere appreciation.

—THE NOCTURNE STAFF

Compliments
of
A FRIEND

