

**N  
O  
C  
T  
U  
R  
N  
E**

**1945**







University System  
of Georgia

GEORGIA STATE COLLEGE

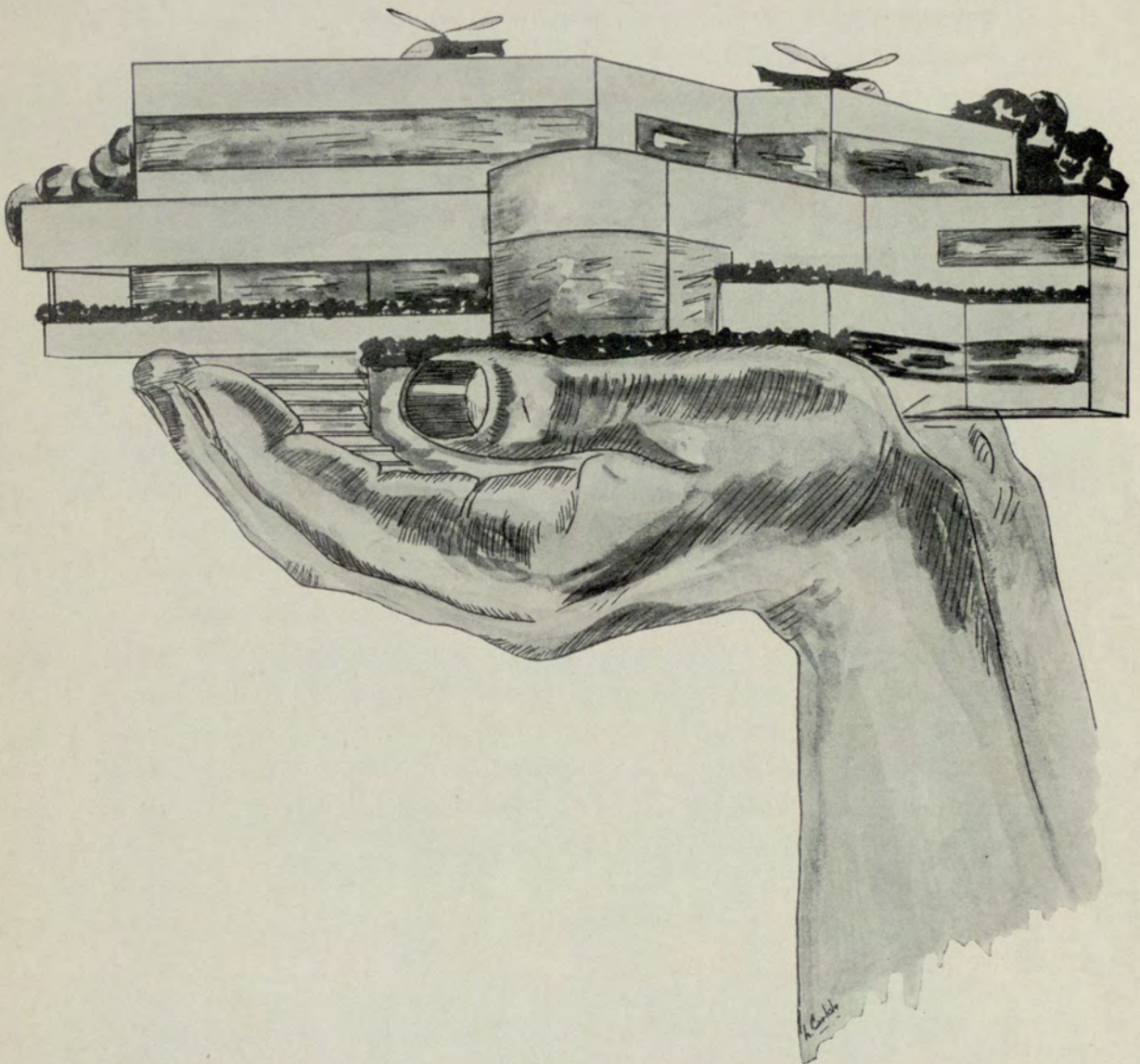
LIBRARY

---



**THE  
NOCTURNE  
1945**

**Dedicated to**



**THE FUTURE GEORGIA EVENING COLLEGE**



LD 1961  
G 85 N6  
1945  
C.2

## Foreword

For the past few years — these years of war — we have dedicated the Nocturne to our boys in service. This is as it should be. Our former classmates in Burma, on Luzon — in plane, sub, on foot — are winning our freedom and our praise! We don't mean to be overoptimistic but are gladdened to see some of the boys already coming home. Have they changed? Do they want to come back to the same friends, to the old school? Are they satisfied with conditions as they left them? If it was good enough for 1940, is it good enough for — well, whenever hostilities cease? We have talked to the veteran, and he has changed. He is older and stands straighter. He thinks more and laughs less. But should we be saddened by this new man — this stalwart serious product of the war machine? At first, we long for the carefree friend we knew. Then it dawns on us. He has lost many adolescent traits, but has gained physical and emotional strength. And on certain values he is firm. He remembers his old friends as the best. He wants to continue his education. He would like to return to the old school. But the school must meet his new requirements. He wants to specialize in new fields of which he has had a taste in the army, perhaps aerial photography or public relations work. We can help him. Already we are making steady progress toward a more adequate curriculum. We are giving him more specialized courses. And we have our eye on a college of the future — a beautiful building worthy of the educational benefits within its walls. It's going to be a memorial to the tireless efforts of those who understood. When the rest of the boys come home, they will see we are ready for the old friend and the new veteran.



Univ. Archives  
LD 1965  
.N63  
1945  
C.3



REGISTRATION



NOCTURNE DANCE



SORORITY SHIN-DIG



HOMECOMING BANQUET

173490



# FACULTY



DR. GEORGE M. SPARKS  
*Director*

- LOUIS T. BATES, A.B., M.A., Emory University.
- LUCIAN BELL, A.B., Georgia Evening College, Graduate Work Emory and University of Tennessee Medical College.
- RABUN L. BRANTLEY, A.B., M.A., Ph.D., Mercer University, George Peabody College for Teachers.
- R. C. BREWER, A.B., University of Kentucky, University of Wisconsin.
- EUGENIA BRIDGES, A.B., Agnes Scott College.
- JESSE CARLTON BROWN, B.S.E.E., B.C.S., Georgia School of Technology, University System of Georgia Evening College.
- ELMER G. CAMPBELL, A.B., M.S., Ph.D., Hiram College of Ohio, Perdue University, University of Chicago.
- W. C. CANTRELL, A.B., M.A., LL.B., University of Wyoming, Atlanta Law School.
- MRS. MYRTA THOMAS CARPER, A.B., M.A., Oglethorpe, Emory University Library School. Librarian.
- R. A. CHRISTOPHER, B.S.C., University of Georgia.
- BERTRAM OLIVER COSBY, B.S., M.S., Emory University, Graduate Study University of North Carolina and Johns Hopkins University.
- H. E. DENNISON, A.B., University of Tennessee, Graduate Work University of South Carolina.
- E. L. FLOYD, A.B., M.A., LL.B., University of Georgia.
- JOHN A. GRIFFIN, A.B., M.A., Emory University, Graduate Work University of Wisconsin.
- RALPH A. HEFNER, B.S., S.M., Ph.D., Roanoke College, University of Chicago.
- JOHN D. HOFFMAN, Music Director, Atlanta Conservatory of Music, Musical College of Chicago, Franc Prochovski, New York; Robert Clark, St. Louis; Will-Ford Watters, Atlanta; William Claire Hall, Chicago.
- R. R. HOLLINGSWORTH, A.B., M.A., Ph.D., Emory University, University of Chicago.
- MRS. J. B. HOSMER, A.B., Fine Arts Certificate, Washington University, St. Louis School of Fine Arts.
- HAL HULSEY, A.B., M.A., University of Georgia, Graduate Work, University of Georgia, Emory University.
- H. REID HUNTER, A.B., M.A., Ph.D., Duke University, Columbia University, Emory University, George Peabody College.
- MISS PICKETT HYNES, B.C.S., University System of Georgia Evening College.
- MRS. J. B. KINCAID, A.B., Wesleyan College, Assistant Librarian.
- V. V. LAVROFF, Junior College, Harbin, China, B.S.C., M.A., Georgia School of Technology, Emory University.
- MAJOR WILLIAM P. LAYTON, Director of Physical Education, B.Ph., Emory University.
- B. E. LINDSEY, A.B., M.S.C., University of Kentucky, University of Georgia.
- HARVEY LIVINGSTON, B.C.S., University System of Georgia Evening College.
- LIEUTENANT W. F. LOZIER, A.B., LL.B., Columbia University.
- WARREN C. MADDOX, A.B., M.A., Oglethorpe University.
- CAPTAIN GEORGE MANNERS, B.S.C., C.P.A., University of Georgia.
- CARL MAUELSHAGEN, A.B., M.A., Ph.D., University of Tennessee, University of Chicago, University of Minnesota.
- J. E. MAYO, A.B., M.A., C.P.A., Mercer University.
- HAZEL POSS, B.S., University of Georgia.
- JAMES E. ROUTH, A.B., Ph.D., Johns Hopkins University.
- G. N. SISK, A.B., M.A., University of Alabama.
- H. O. SMITH, A.B., M.A., Harvard University, Emory University, Graduate Work University System of Georgia Evening College.
- WILLIAM S. SMITH, B.C.S., Georgia School of Technology.
- GEORGE McINTOSH SPARKS, A.B., M.A., LL.D., Mercer University, Oxford, England.
- MRS. D. B. TALLANT, Registered Nurse.
- MRS. NELL HAMILTON TROTTER, A.B., M. A., University of Wisconsin, University of Arkansas, Dean of Women.



# FACULTY



Reading from Top Left: Brewer, Bridges, Brown, Christopher, Floyd, Griffin, Hulsey, Hynes, Lavroff, Layton, Lindsey, Lozier, Manners, Mayo, Routh, W. S. Smith, Tallant, Trotter, Hollingsworth, Hosmer, Hunter, Mauelshagen, Warren, Bell, Dennison, Cantrell, Maddox, Bates, Cantrell, Hefner, Brantley, Livingston.



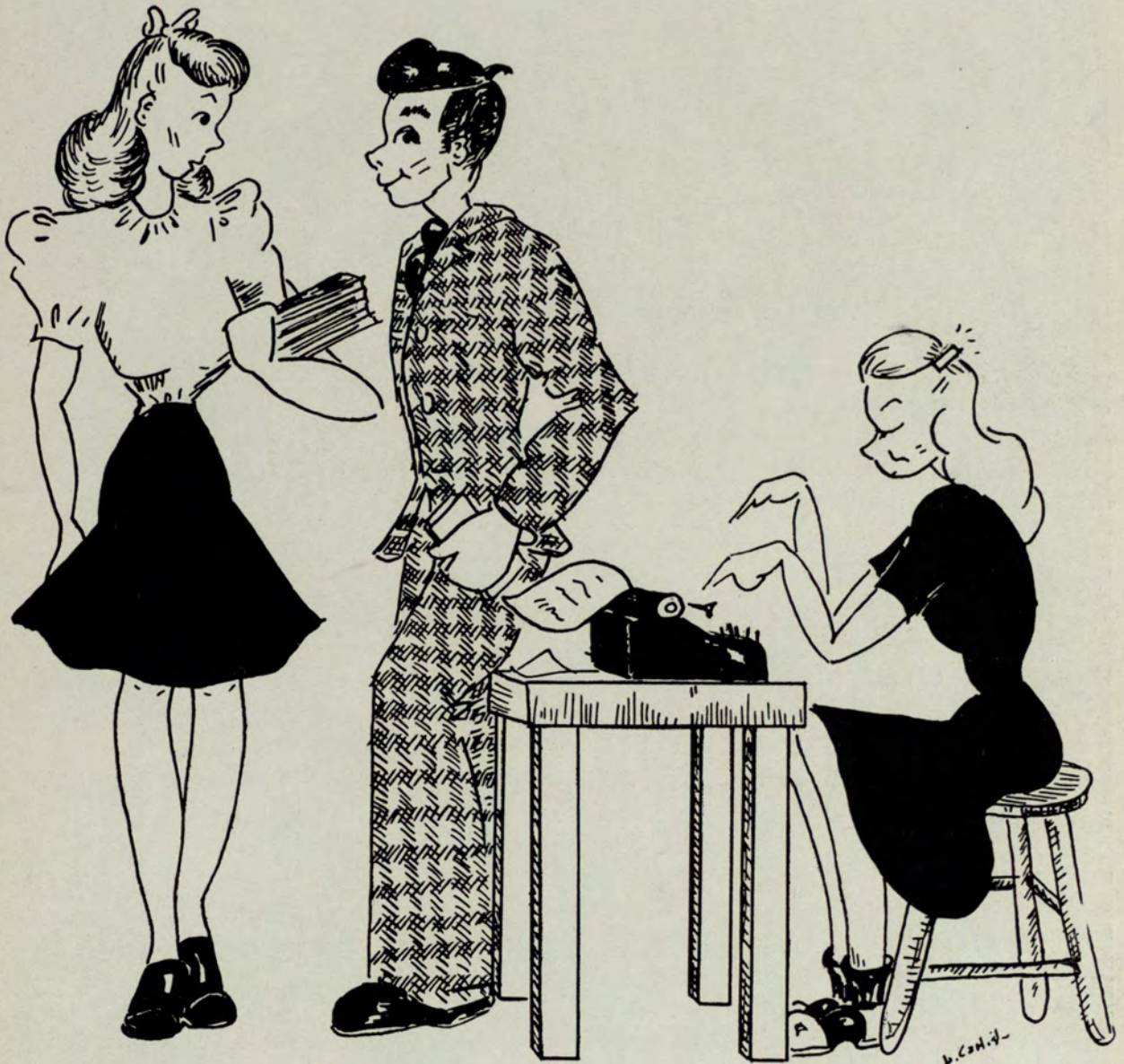




1. Hap, Pat, and Tommy — will they ever get out! 2. Refectory scene. 3. Lucy B. 4. Waiting (?) for the wolves. 5. Slipping out of class — Mark and Tommy. 6. Going our way? 7. Spur Club (Evelyn) 8. Ruby. 9. Effie and Emory — reminiscing. 10. That cute Evelyn Hyde. 11. When a girl's around Bill likes to help. 12. Eloise and Betty. 13. Don't you like shoes, Margaret? 14. Bates. 15. Party at the lodge. 16. Delta Lambda Sigma Hen Party. 17. Rose Marie, Ida, and Rachel. 18. The Creech sisters.



# CLASSES





# SENIOR CLASS OFFICERS

LENA WAGNON ..... *President*

WILLARD SHANK ..... *Vice-President*

LAURA RUTH WEBB ..... *Secretary*

ROLAND NEESON ..... *Treasurer*





# SENIORS

C. GLYNN CAPPS

*The Southeastern Optical Co., Inc.*

Entered from Newville High School, Newville, Alabama. Student Council '44.



C. GLYNN CAPPS



WILLIAM B. CARNES



LUCY COBB

WILLIAM B. CARNES

*Bell Aircraft Corporation*

Entered from Mercer University, Macon, Georgia.

KATHRYN ELIZABETH COFER

KΘ

*Federal Reserve Bank of Atlanta*

Entered from North Georgia College, Dahlonega, Georgia. Kappa Theta '42-'45, Treasurer '43-'45, Fermartia Club '42-'43, Student Council '42-'44.

LUCY COBB

KΘ

*Standard Feed Milling Company*

Entered from Agnes Scott College, Kappa Theta '43-'45, Vice-President '44-'45, Phi Chi Theta '44-'45, Crimson Key '43-'45, Secretary '44-'45, Student Council '42, Kappa Theta Cup '44, Delta Mu Delta Pre-Junior Key '44.

IDA CREECH

ΦΧΘ

*Sears, Roebuck & Company*

Entered from Georgia Teachers College, Collegeboro, Georgia. Phi Chi Theta '44-'45, Iris Bud Editor '44-'45, Crimson Key '44-'45, Interfraternity Council '44-'45, Student Council '44-'45.



KATHRYN COFER



IDA CREECH



C. L. DEADWYLER

C. L. DEADWYLER

*Remington Rand, Inc.*

Entered from Georgia School of Technology.



# SENIORS



JOSEPH B. FENNELL



MELBA HART



ELOISE HENRY

ELOISE HENRY  
KΘ

*War Manpower Commission*

Entered from Agnes Scott College, Kappa Theta '43-'45, Phi Chi Theta '43-'45, Crimson Key '43-'45, President of Junior Class '43-'44, Secretary of Student Council '43-'44, Interfraternity Council '44-'45, Associate Editor of Nocturne '43-'44, President of Student Body '44-'45, Intramural Key Award '43, Kappa Theta Pre-Jr. Cup '43, Phi Chi Theta Scholarship Key '44, Robert R. Johnston Scholarship Key '44, Most Intellectual '44, Most Likely to Succeed, '44, Miss Evening College '45, Best All-Round '45.

JOSEPH B. FENNELL

*American Art Metals Co.*

Entered from 2nd District A & M, Tifton, Georgia, Federal Credit Union, President '44-'45, Student Council '44-'45.

SYLVESTER INKS

*U. S. Penitentiary*

Entered from Springfield State Teachers College, Springfield, Missouri.

MELBA HART

ΦΧΘ

*Atlanta Goodwill Industries*

Entered from Atlanta Junior College, Crimson Key, '45, Phi Chi Theta '45.

JOHN E. LEE

*Gwinnett County Board of Education*

Entered from Snellville High School, Snellville, Georgia.

ALICE HULL

*Boys' High School*

Entered from Girls' High School, Crimson Key '45.



ALICE HULL



SYLVESTER INKS



JOHN E. LEE



# SENIORS

ROSE MARIE LUNSFORD

ΦΧΘ

*Georgia Evening College*

Entered from Georgia State College for Women, Milledgeville, Georgia, Phi Chi Theta '45, Crimson Key '45.



ROSE MARIE LUNSFORD



LOUISE McGUIRE



FANK McNABB

MRS. LOUISE MARCHMAN McGUIRE

KΘ

*The Amelia Corporation*

Entered from Girls' High School, Phi Chi Theta, '37-'41, Vice President '38-'39, Treasurer '39-'40, Rec. Secretary '40-'41, Kappa Theta '40-'42, Rec. Secretary '40-'41, President '41-'42, Crimson Key, Pres. '40-'41, Interfraternity Council '37-'38, '40-'42, Nocturne Staff '37-'38, Phi Chi Theta National Key, '41, Kappa Theta Cup '41.

FRANK McNABB

ΔΚΨ

*Sears, Roebuck & Company*

Entered from Berry College, Alpha Kappa Psi, '45, Intramural Key '45.

JOHNNIE MILLER

ΦΧΘ

*Division Engineers, Supply Division*

Entered from Young Harris College, Phi Chi Theta '43-'45, Grand Councillor '43-'44, Delta Mu Delta '44-'45, Secretary '44-'45, Crimson Key '44-'45, Interfraternity Council '44-'45.

THOMAS HIGH MOBLEY

*Federal Reserve Bank*

Entered from Shady Dale High School, Shady Dale, Georgia, Venetian Club '32-'33.

ROLAND NEESON

*Plantation Pipe Company*

Entered from Bowdon State College, Bowdon, Georgia, Senior Class Treasurer, '44-'45.



JOHNNIE MILLER



THOMAS HIGH MOBLEY



ROLAND NEESON



# SENIORS



ETHEL O'NEAL

ELIZABETH M. PARKER

ETHEL RANSOM

ETHEL RANSOM

*E. L. Johnston Auto Supplies*  
Entered from Middle Georgia College.

ETHEL O'NEAL

*The Cotton Insurance Association*

Entered from Georgia Industrial College, Barnesville, Georgia.

LOUIS D. SPECHT, JR.

*Tech. Sgt., United States Army*

Entered from Boys' High School, Student Council '43-'44, Secretary Junior Class '44, Intramural Key '45.

ELIZABETH MOORE PARKER

*Rich's, Inc.*

Entered from University of Georgia, Athens, Georgia.

MILDRED STANSELL

ΦΧΘ

*War Department, Fourth Service Command*

Entered from Birmingham-Southern College, Birmingham, Alabama. Phi Chi Theta '44-'45, Corresponding Secretary '44-'45, Crimson Key '44-'45.

WILLARD ATHERTON SHANK

ΔΚΨ

*Lieutenant, United States Army*

Entered from University of California, Alpha Kappa Psi '43-'45, Nocturne '44 Editor, Student Council '43-'45.



WILLARD A. SHANK

LOUIS D. SPECHT, JR.

MILDRED STANSELL



# SENIORS

LENA WAGNON  
KΘ

*Board of Regents*

Entered from Atlanta Junior College, Kappa Theta '41-'45, Treasurer '41-'42, Vice President, '42-'43, Alvinian Club '45, Interfraternity Council '42-'44, President '42-'43, Student Council '42-'45, Secretary '44-'45, Senior Class President '44-'45, Chairman Homecoming Banquet '44, Nocturne '43-'45, Best Dressed '42-'45, Most Popular '44-'45, Wittiest '43-'44.



LENA WAGNON



LOURAINE WALDRIP



LAURA RUTH WEBB

LOURAINE WALDRIP

*Charles A. Rawson and Associates*

Entered from Atlanta Junior College.

LAURA RUTH WEBB

KΘ

*First National Bank*

Entered from Cumming High School, Cumming, Georgia, Phi Chi Theta '42-'45, Corresponding Secretary '43-'44, Kappa Theta '43-'45, Corresponding Secretary '44-'45, Junior Class Treasurer '43-'44, Senior Class Secretary '44-'45, Student Council '44-'45, Crimson Key '42-'45.

RACHEL WHATLEY

ΦΧΘ

*Tech High School*

Entered from Georgia State College for Women, Milledgeville, Georgia. Phi Chi Theta '43-'45, Vice President '43-'44, Delta Mu Delta '44-'45, President '44-'45, Interfraternity Council '43-'44, Secretary and Treasurer '43-'44, Crimson Key '43-'45, Vice President '44-'45, Alvinian Club '45, Nocturne '43-'45.



RACHEL WHATLEY



NORMA JUNE WILSON

NORMA JUNE WILSON

KΘ

*Goodyear Tire Company, Inc.*

Entered from South Georgia College, Douglas, Ga., Kappa Theta '42-'45, Vice President '43-'44, Phi Chi Theta '42-'45, Crimson Key '42-'45, President '43-'44, Interfraternity Council, '42-'44, Secretary-Treasurer '42-'43, Playcrafters '44-'45, University Signal '44-'45, Student Credit Union, Vice President, Student Council '42-'43, Most Beautiful '43-'45, Wittiest Girl '44-'45.



# JUNIOR CLASS OFFICERS

EMORY JOHNSTON ..... *President*  
ELIZABETH BRANCH ..... *Vice-President*  
RUBY SELLERS ..... *Secretary*  
CECIL TURNER ..... *Treasurer*





# JUNIORS



Margaret Elmina Austin



Ruth Biles



Elizabeth Branch



Carolyn Brittingham



Marian Calloway



MARTHA



Elizabeth Cathcart



Ralph Chapman



Nettie Mae Donald



Mildred Dorris



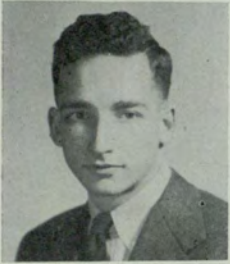
Martha Elizabeth Doyle



# JUNIORS



Judy Flynt



Guy Winfred Gupton



Wm. B. Hartsfield, Jr.



Mary Heeth



JEAN



LOU



Jean Heydon



Catherine Matilda Ivey



Louise Johnson



Emory Johnston



Charles Turner Lewis



# JUNIORS



CECIL

Leona McMichael



Muriel Mahaffey



Hugo Muenz



Anne Rita Murphy



Jeanne Rochelle



Ruby Sellers



Nedra Shockley



Georgann Tatman

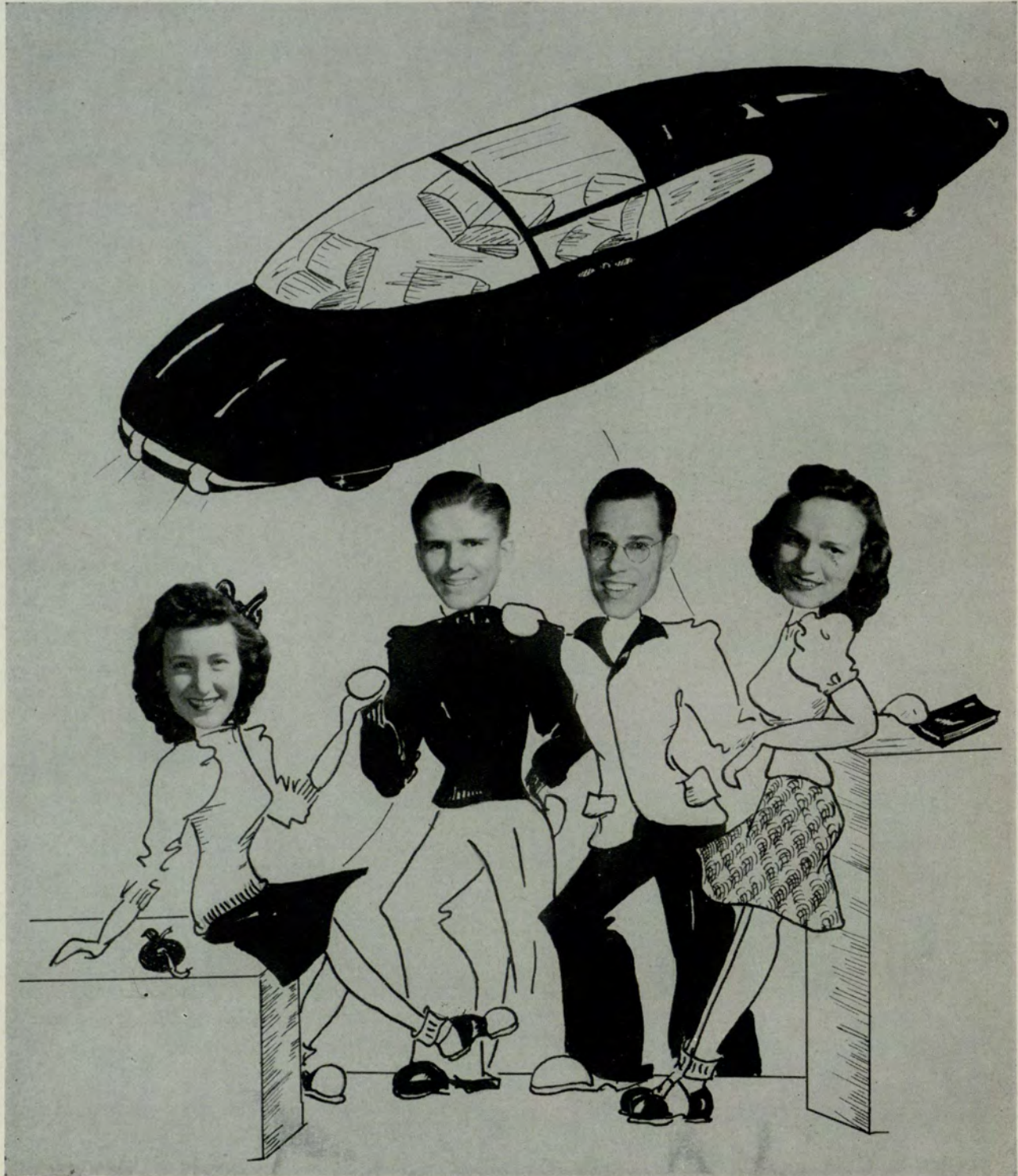


Lester Cecil Turner



# PRE-JUNIOR CLASS OFFICERS

DAVID CASON ..... *President*  
TOMMY STOCKS ..... *Vice-President*  
ELSA O'CALLAGHAN ..... *Secretary*  
EVELYNE CRAWFORD ..... *Treasurer*





# PRE-JUNIORS



VIVIAN & EVELYNE

Mae G. Acree



Mickey Bloodworth



Mary Inell Boling



David A. Cason, Jr.



Hope Childs



Vivian Clowdis



Evelyne Crawford



Elaine Crump



Luke Darnell



# PRE-JUNIORS



Virginia Darnell



Grace Downie



Marilyn Ginn



Christine Hansard



Ruby Harrelson



RUBY, TOMMY, & LUKE



C. G. Hollingsworth



E. C. Howell, Jr.



Harold Jackson



Mary Louise Jones



Clifford Lunsford



# PRE-JUNIORS

Rose Mary McCallie



Rounelle Martin



Ida Madge Moore



Pierce Moore



Elsa O'Callaghan



MADGE



Robert Eugene Smith



Sarah Smith



Thomas F. Stocks



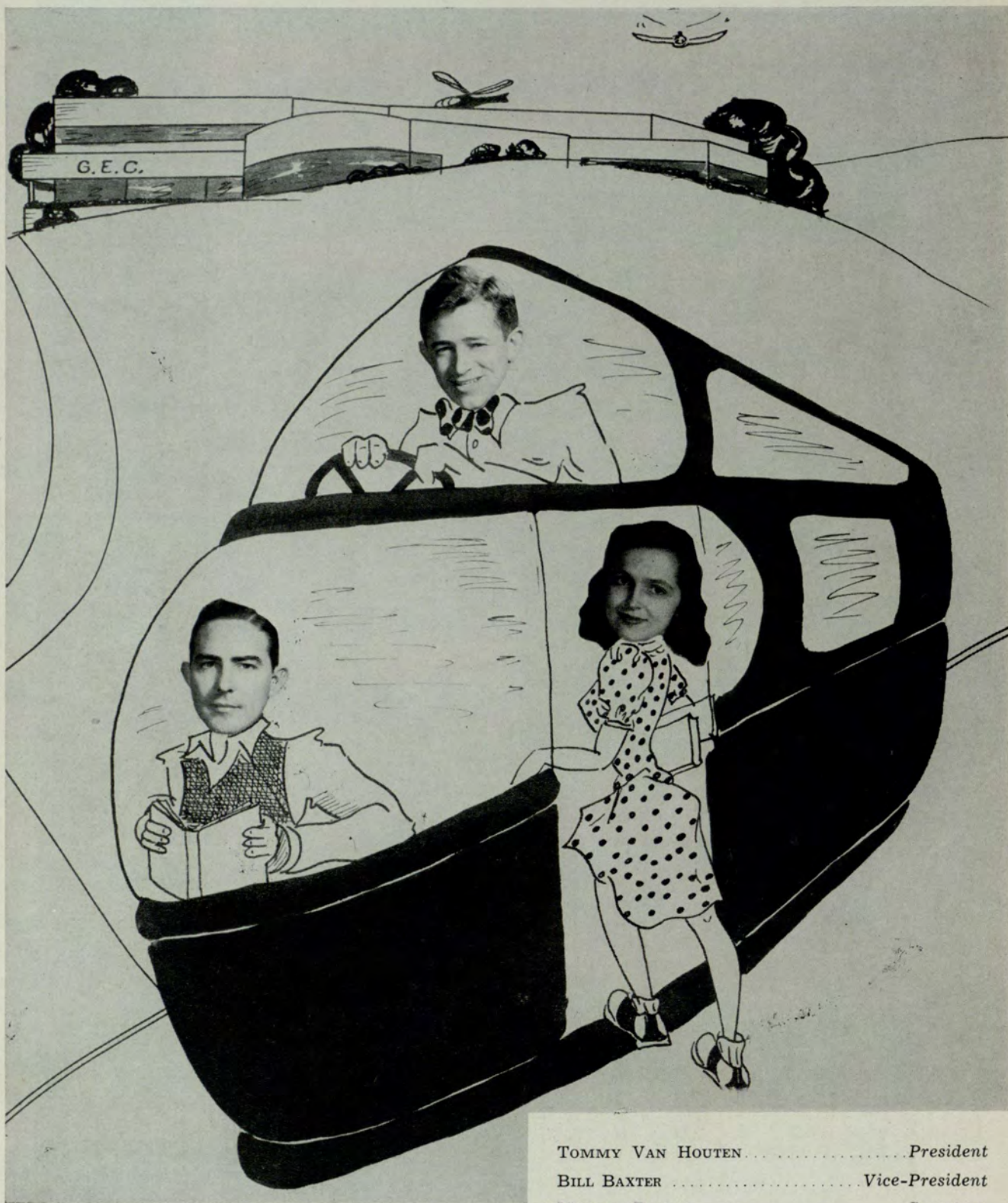
Julia White



Betty Lee Williams



# SOPHOMORE CLASS OFFICERS



TOMMY VAN HOUTEN ..... *President*  
BILL BAXTER ..... *Vice-President*  
MARTHA RHODES ..... *Secretary*  
BETTY COOPER ..... *Treasurer*



# SOPHOMORES

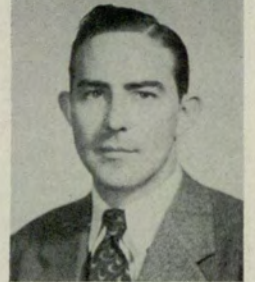


MARY & VIRGINIA

Edith Anderson



William Baxter



Mary Brazell



Mary Louise Cobb



Betty Cooper



Claudia Crusselle



Julia B. Grizzell



Mary E. Jarrett



Jimmy Knight



# SOPHOMORES



Doris Koppe



William Lathem



Katherine Lay



Alberta Loyd



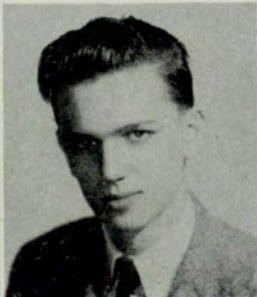
ALBERTA & ELOISE



Fran McKee



LaRose Manderson



Robert J. Morris, Jr.



Orman Flynt Nobles



Pat Nowell



# SOPHOMORES



TOMMY

Rosemon Pepper



Evelyn Perry



Evangeline Thomas



Thomas E. Van Houten, Jr.



Julian Wall



Virginia White



Louise Whitmire



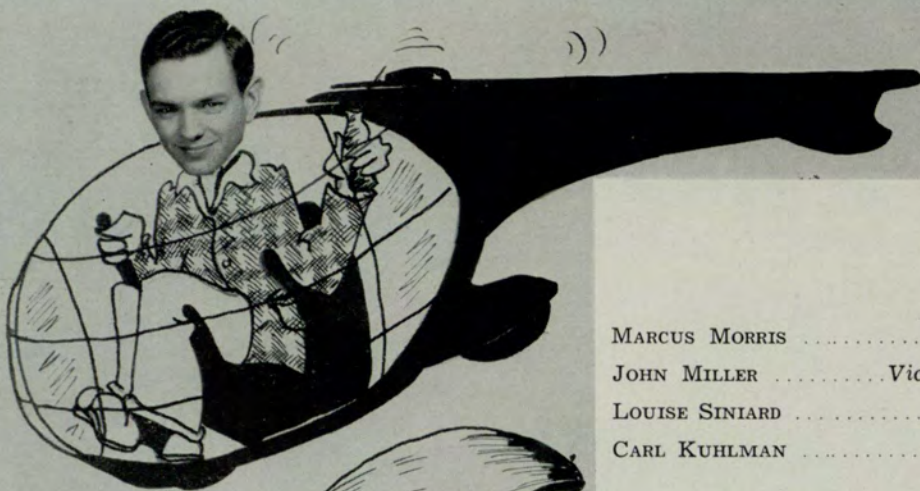
Dorothy Wilson



Avolyn Wright



# FRESHMAN CLASS OFFICERS



MARCUS MORRIS ..... *President*  
JOHN MILLER ..... *Vice-President*  
LOUISE SINIARD ..... *Secretary*  
CARL KUHLMAN ..... *Treasurer*



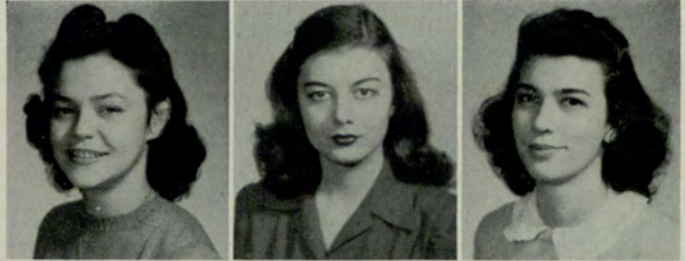


# FRESHMEN

Jewel Abt

Eloise Adkins

Mary Anne Alexander



Evelyn Anderson

Bettie Patricia Andrews

J. V. Athon, Jr.



Blanche Ayres

Keith G. Bates

Virginia Dare Bell



Anna Jean Biles

K. Collins Blackmarr

Frances Blackmon



Carolyn Blue

Betty Briley

Joyce Brown



Gilbert Bryan

Margaret Buchanan

Jean Buck





# FRESHMEN



Joy Burks

Helen Lucille Caldwell

Marie Cathcart



Sarah Louise Cobb

Edna Colquitt

Hazel Combs



Ethel Beatrice Cooper

Anna Lucile Cowart

Gwendolyn Cox



Mrs. Ann Craig

Gloria Creech

Barbara Dailey



Juanita Danial

Marjorie Davis

Nancy Dobbins



Alice Dozier

Lilian Dyal

Barbara Ann Evans



# FRESHMEN

Lucile Nelle Flanders

Wm. Jabez Galt

Robert J. Gibson



Lillie Clara Gilley

Jean Gordon

Elizabeth Grier



R. James Hager

Sara G. Harris

Alice Haskins



Carolyn Hayes

William H. Hembree

Rose Marie Henley



Isabell Herzberg

Edna Higgins

Barbara Anne Hill



Emily Horne

Dorothy Juanita Hughes

Elizabeth Hunter





# FRESHMEN



Fay Hunter

Evelyn J. Hyde

Don Ingram



Camille Jackson

Sarah Jones

Juanita Kerley



Wm. Carl Kuhlman

Billie Leary

Elaine Levy



Jean McClure

Patricia McCready

Betty McCroskey



Jean McElroy

Helen McGarity

Janie McMichael



Richard T. McRae

Ruth Maddox

John Mahl



# FRESHMEN

Jimmye Miller  
 John P. Miller  
 Carolyn Sockwell Moore



Cordelia Moore  
 Hiram W. Moore  
 Marcus M. Morris



Martha Nalley  
 Margaret Norman  
 R. Lowman Oglesby



L. Carle O'Quinn  
 Martha Pace  
 Mary Pace



Virginia Pace  
 Ruth Parkman  
 Betty Anne Perrin



Eva Poolos  
 Gloria E. Reed  
 Nellie Jean Richardson





# FRESHMEN



Martha Virginia Rodgers

Edna Rowland

Blanche Salmond



Betty Sharp

Anne Simmons

Louise Siniard



Margaret Slocum

Lucy B. Smith

Vivian Smith



William A. Smith

Alfred F. Snedgen

Estelle Snow



Pvt. Jack Sparrer

Marjorie Lee Stone

Katherine Thompson



Wyles L. Thompson

Bobbie Tillander

O. T. Walz, Jr.



# FRESHMEN

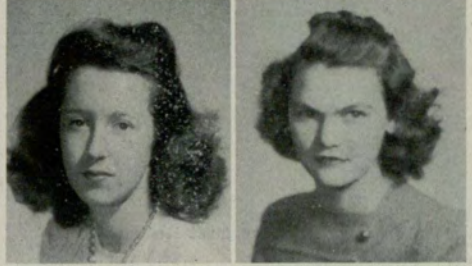
Eddie Lou Warr

Charles W. Williams



Eloise Williams

Louise Claire Williams



Jack Willoughby

Doris Willson



Vivian Estelle Winkles

Martha Winn



Joe Woods

Evelyn B. Woolf (Mrs.)



Clarice Yancey

Earle Etelle Young

Dick Zylman







# SPECIAL CLASS



Margaret Ruth Allen



Helen Citron



Grace Anderson



Richard Carver



James Morgan Anderson, Jr.



Lurline Carlisle



Zania Anderson



Albert W. Bubbice



De Jan Awtry



Miriam Barnett



Alice Benator



Tommie Blue



Bob Booth, Jr.



Lois Brooks



# SPECIAL CLASS



Calphrey Clinton Clark, Jr.



Nathan Cohen



Nettie Pearl Coleman



Marie Cooper



Willodean Crowell



Marjorie Clair Davis



Martha Ellis



Martha K. Fling



Ruth Fortner



Sybil Rose Gillman



Alice Goncher



Mary Lee Hammond



Mrs. Mardrie Harris



Mary Lee Hawkins



Lois Holbrook



# SPECIAL CLASS

Jeannette Dale King



H. Clyde Kitchens



Louise Johnstone



Marylee Jenkins



Helen Jeffries



Katherine Lesesne



Dan Kimsey McNally, Jr.



FOUR CHUMS



Martha Jane Martin



LENA & BILL



Helen Mayer



Newell Moon



Doris Nash



Margaret Phillips



Martha Pounds



Margaret Rankin



# SPECIAL CLASS

Cameron Reaud



Thelma M. Sills



Edna K. Smith



Jaunita Smith



Lida Smith



Martha Smith



Eloise Sprayberry



Mary Sullivan



Mrs. Elsie J. Thacker



LURLINE



Elsie Nell Yeager



Marie Whiteside



James Leland Webb



William A. Walsh, Jr.



Anthony J. Trocone

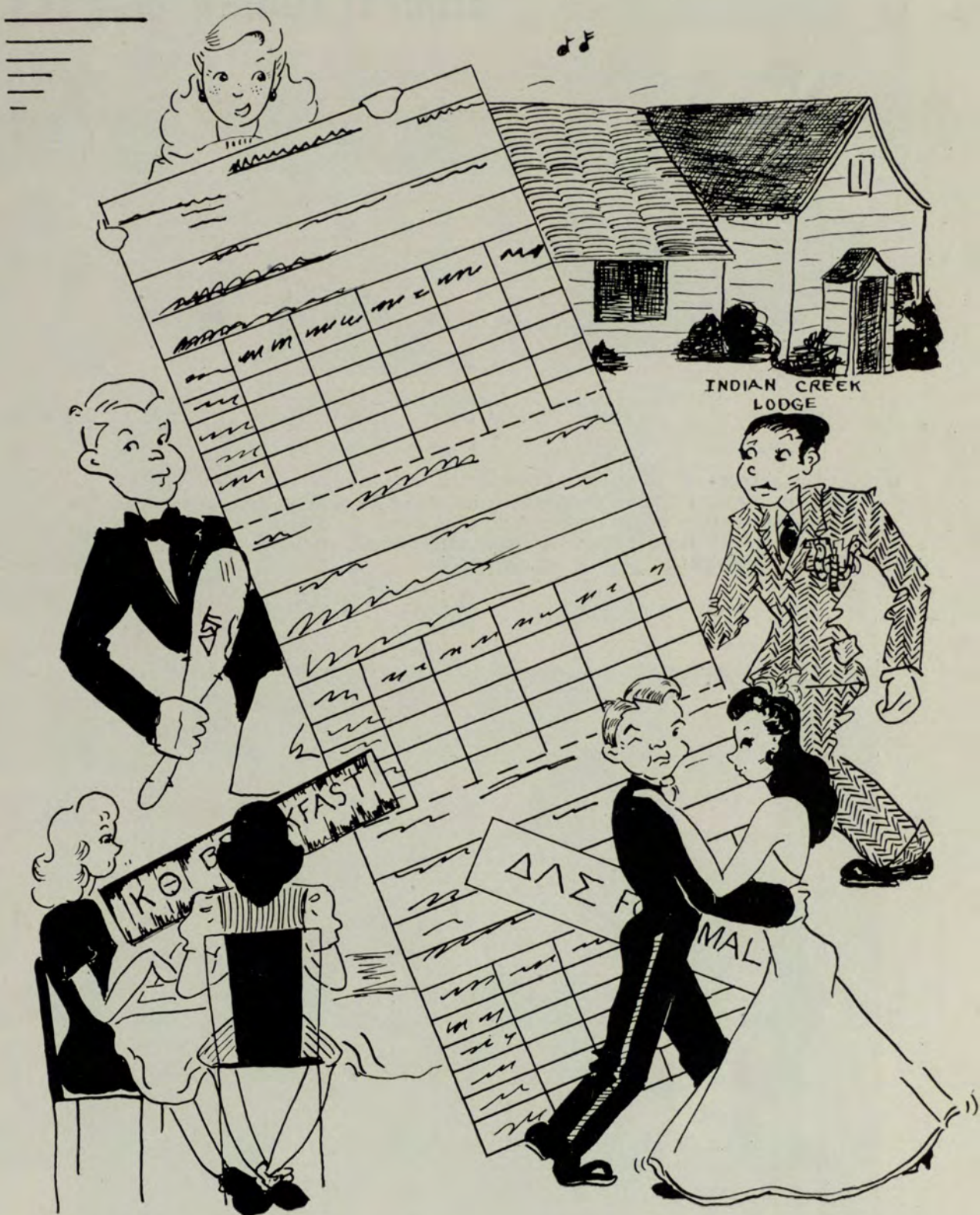




1. Purple Heart line at Homecoming Banquet 2. Kappa Thetas 3. They're neither too young nor too old (say Evelyne and Lucy) 4. G.E.C. Wolves 5. Spring swinging 6. Nice! 7. Solution of manpower shortage by Miller & Stansell 8. Gym class 9. Louise and that beautiful smile 10. McNally on the prowl 11. Ping Pong in Refectory—Bill and Lena 12. It's a "Hap," hap, happy day 13. Ida 14. Jean and John—Chemistry Lab 15. Virginia 16. Hallowe'en party at lodge 17. Trash—oh, yeah! 18. Mark 19. Rosemon 20. Delta Lambs 21. Who goes there? (Ruby & Jean) 22. Lena—H.C. Banquet Chairman 23. Mary 24. Relaxing—Lena, Evelyn and Kitty



# ACTIVITIES







ELOISE HENRY

## STUDENT COUNCIL OFFICERS

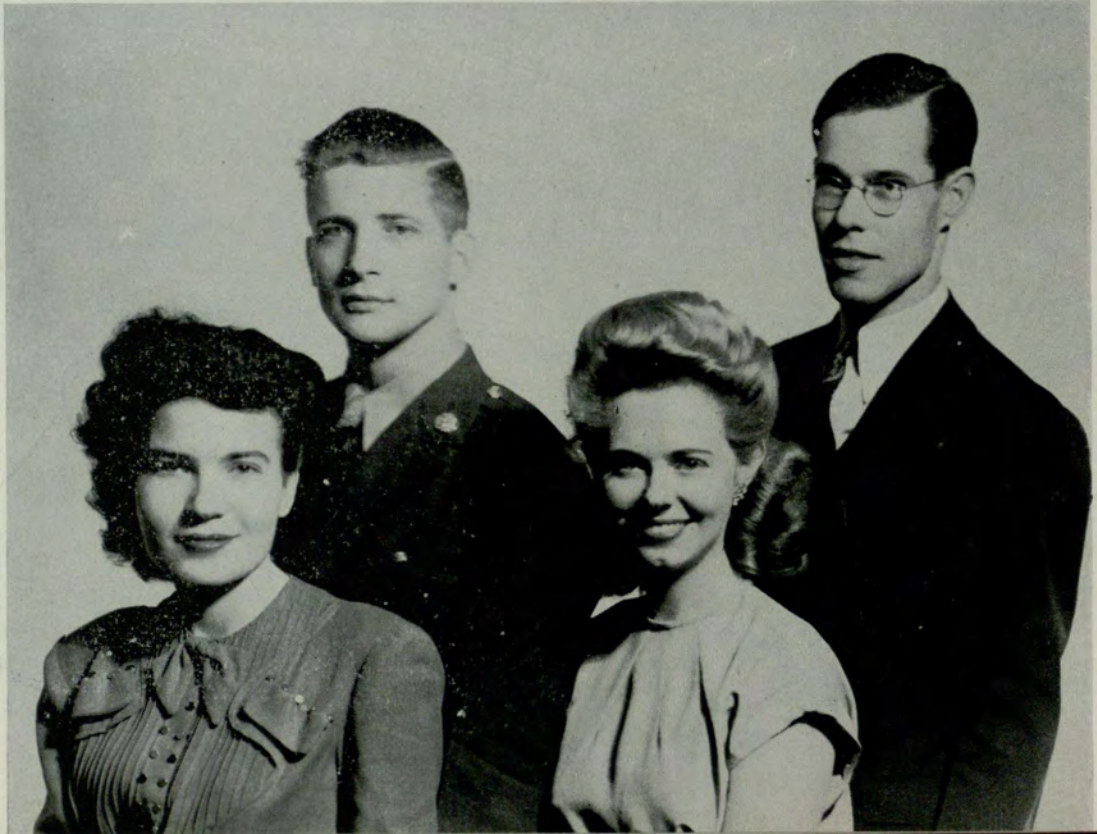
ELOISE HENRY ..... *President*

EMORY JOHNSTON ..... *Vice-President*

LENA WAGNON ..... *Secretary*

DAVID CASON ..... *Treasurer*

The purpose of the Student Council is to express the will of the majority of the Student Body through the guidance of Student Activities; to strive toward an ever closer understanding between the Faculty and Students, and to work toward the betterment and growth of the Evening College and its students.





# STUDENT COUNCIL



Jewel Abt  
 Bill Baxter  
 Lurline Carlisle  
 David Cason  
 Ralph Chapman



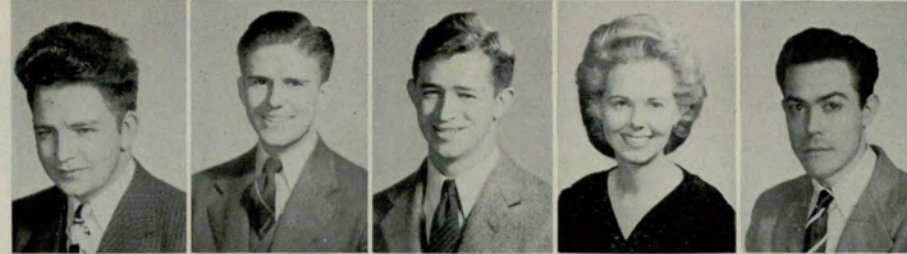
Evelyne Crawford  
 Ida Creech  
 Joseph Fennell  
 Robert Gibson  
 Louise Johnson



Emory Johnston  
 Fran McKee  
 Richard McRae  
 John Miller  
 Carolyn Moore



Marcus Morris  
 Lowman Oglesby  
 Willard Shank  
 Lucy Smith  
 Martha Smith



Alfred Snedgen  
 Thomas Stocks  
 Thomas E. Van Houten, Jr.  
 Lena Wagnon  
 Julian Wall

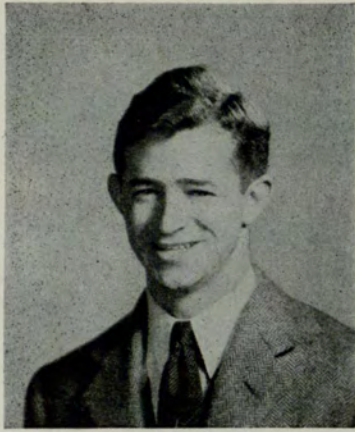


William A. Walsh  
 Laura Ruth Webb  
 Virginia White  
 Betty Lee Williams  
 Dorothy Wilson



# THE NOCTURNE

## THE STAFF



TOMMY

THOMAS E. VAN HOUTEN, JR. .... Editor  
EVELYNE CRAWFORD ..... Associate Editor  
MARGARET SLOCUM ..... Picture Editor  
LURLINE CARLISLE ..... Art Editor  
RICHARD J. HAGER ..... Business Manager  
NATHAN COHEN ..... Business Manager



Evelyne



Margaret



Lurline



Jim

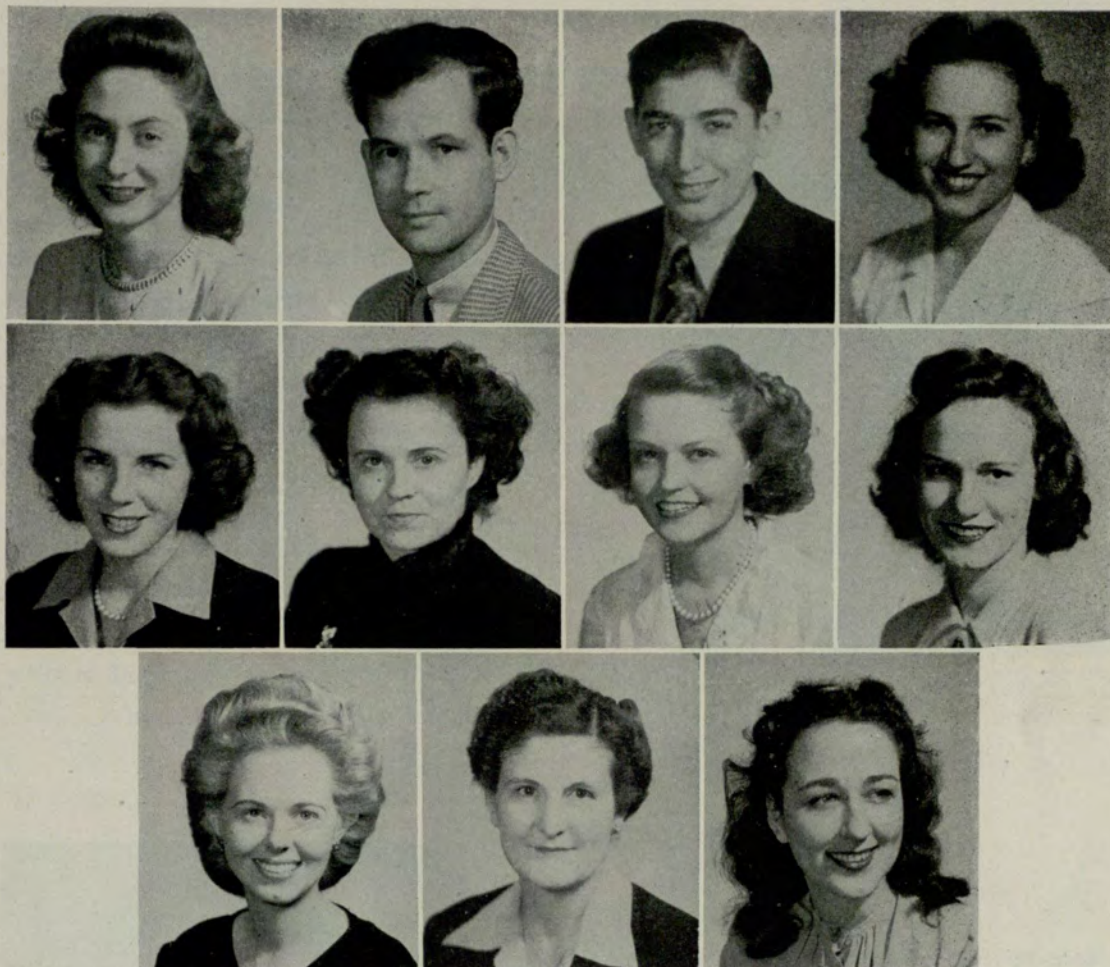


Nathan





# THE NOCTURNE ASSISTANTS



*First Row*—Ruth Biles, Bob Booth, Albert Bubbico, Claudia Crusselle

*Second Row*—Nancy Dobbins, Mary Jarrett, Louise Johnson, Elsa O'Callaghan

*Third Row*—Lena Wagon, Rachel Whatley, June Wilson

*Our hearty thanks to these people who also did much to make this Nocturne a success.*

KEITH G. BATES  
JEAN HEYDON  
HAROLD JACKSON  
MARY JARRETT  
CARL KUHLMAN  
CHARLES T. LEWIS  
FRANK McNABB  
ROUNELLE MARTIN  
JOHN MILLER  
ARTHUR MONTGOMERY  
LUCY SMITH

OUR ADVERTISERS



# FLAMBO



M. HOPE CHILDS  
*Editor*

## STAFF

Margaret Blincoe, Susanne Donaldson,  
Editorial Staff Assistants.

Louise Mansfield, Neona Smith, Busi-  
ness Staff Assistants.

Dr. James E. Routh, Faculty Advisor  
to the Editorial Staff.

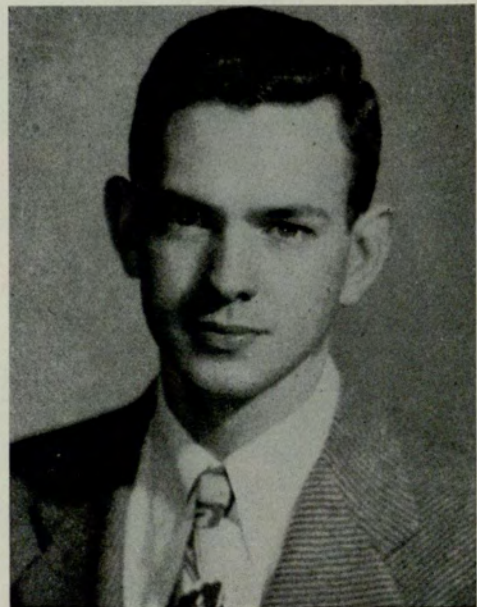
Major Wm. P. Layton, Faculty Advisor  
to the Business Staff.

## FLAMBO . . .

is the literary magazine published quarterly by the students of the Evening College and the Junior College. It carries poetry, short stories, articles and editorials contributed by students of both the Evening and Day Schools.

## FLAMBO . . .

is the measuring rod of the School's literary talent. The first requisite for Flambo 'pieces' is that they be well-done from a structural point of view, but a secondary and as important quality is that they have 'meat' on their bones.



MARCUS MORRIS  
*Business Manager*



# THE UNIVERSITY SIGNAL

Published by the students of the Georgia Evening College and the Atlanta Junior College in Atlanta, 162 Luckie St., Atlanta, Ga. Advertising rate upon request.

National advertising handled by National Advertising Service, 420 Madison Avenue, New York, N. Y.

## EDITORIAL STAFF

BARBARA SIKES { ..... Co-Editors  
HELEN COX {

MARY LOUISE COBB ..... Associate Editor

BOB ALDEN { ..... Co-Feature Editors  
BOB WATSON {

JO FORRESTER { ..... Co-Art Editors  
GLADYS MOCK {

Reporters: Emory Johnston, Carolyn Moore, Virginia Darnell, Kay Woodman, Norma Jane Rader, Marian Hine, Bill Bargren, June Wilson and Bill Richardson.

## BUSINESS STAFF

MARY JARRETT ..... Business Manager  
JACKIE GRACE ..... Advertising Manager

DR. JAMES E. ROUTH AND  
DR. GEORGE M. SPARKS ..... Faculty Advisers



Barbara Sikes  
Helen Cox

The University Signal is the publication of the Georgia Evening College and the Georgia Junior College, a combination of the Junior Collegiate and the Evening Signal.

Students of the two colleges write the stories, read the copy, correct the proofs, and get the ads which make the paper a reality.



Mary Jarrett



Mary Louise Cobb



Jackie Grace



# INTERFRATERNITY COUNCIL



David Cason



Bill Baxter



Evelyne Crawford

## OFFICERS

DAVID CASON ..... *President*  
 BILL BAXTER ..... *Vice-President*  
 EVELYNE CRAWFORD ..... *Secretary-Treasurer*

## REPRESENTATIVES

### ALPHA KAPPA PSI

Luke Darnell  
 Cecil Turner

### DELTA LAMBDA SIGMA

Vivian Clowdis  
 Lucy Smith

### DELTA SIGMA PI

Tommy Van Houten  
 Emory Johnston

### KAPPA THETA

Jean Heydon  
 Margaret Slocum

### PHI CHI THETA

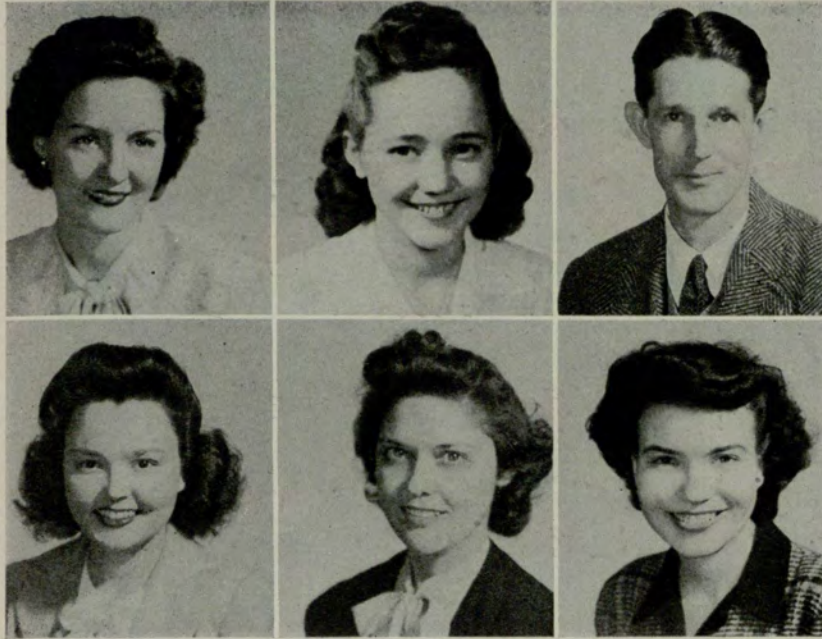
Virginia Darnell  
 Mildred Dorris

### STUDENT COUNCIL

Ida Creech  
 Eloise Henry







Vivian Cloudis

Ida Creech

Luke Darnell

Virginia Darnell

Mildred Dorris

Eloise Henry

The representatives of the six member organizations of Interfraternity Council meet bi-monthly and seek close harmony between sororities, fraternities and other groups in the school. The Council grants meeting and social dates, and controls pledging activities of organizations.

Jean Heydon

Emory Johnston

Margaret Slocum



Lucy Smith

Cecil Turner

Tommy Van Houten





# CRIMSON KEY HONOR SOCIETY



MARTHA DOYLE  
*President*

## OFFICERS

MARTHA DOYLE ..... *President*  
RACHEL WHATLEY ..... *Vice-President*  
LUCY COBB ..... *Secretary*  
LEONA McMICHAEL ..... *Treasurer*

Crimson Key was founded at Georgia Evening College in January, 1934. The purpose of the organization is to promote a closer understanding between Evening College students and the Administration, and to cooperate with the faculty and other organizations in the interest of scholarship, social activities and moral ideals.







Elizabeth Branch  
Elizabeth Cathcart  
Lucy Cobb  
Ida Creech



Virginia Darnell  
Mildred Dorris  
Melba Hart  
Eloise Henry



Alice Hull  
Rose Marie Lunsford  
Muriel Mahaffey  
Louise McGuire



Leona McMichael  
Johnnie Miller  
Ruby Sellers  
Sarah Smith



Mildred Stansell  
Laura Ruth Webb  
Rachel Whatley  
Julia White



Betty Williams  
June Wilson



# DELTA MU DELTA



RACHEL WHATLEY  
*President*

## THETA CHAPTER

Since the installation of Theta Chapter, June 9, 1931, Delta Mu Delta has done much to promote a higher standard of scholarship in the Evening College. This fraternity is to promote higher scholarship in subjects set forth in the curriculum of the Evening College; to stimulate interest in the advancement of scholarly ideals; and to recognize and reward scholastic attainment in the studies as set forth above.

The election of members, selected from the graduating seniors, together with two undergraduates, honors those students who have successfully passed the rigid requirements for this, the only national scholarship fraternity in the Evening College.

Through the Delta Mu Delta Honor Roll, the records of outstanding scholastic ratings are acknowledged.



JOHNNIE MILLER  
*Secretary*



# DELTA MU DELTA

## OFFICERS

RACHEL WHATLEY .....	<i>President</i>
CLAIRE MANNERS .....	<i>Vice-President</i>
JOHNNIE MILLER .....	<i>Secretary</i>
INEZ KITCHENS .....	<i>Treasurer</i>

## ROLL

	1945	
Alice Hull	Mildred Stansell	Lucy Cobb
Eloise Henry	George H. Herbert	
	1944	
Mary Farmer Cherry	Dorothy Strange	Johnnie Miller
Georgia Stone	Frances E. Summerlin	Rachel Whatley
	1943	
Fred L. Windham	Caroline Reid	Roger Dozier
	1942	
Edna Cooper	Claire Manners	Elizabeth Ramsden
Worth P. O'Dell	Inez Kitchens	Lois Dozier
Harold Duncan	William Bromberg	Elizabeth Allen
W. R. Hammond	Jeanne Johnson	
	1941	
Hans H. Butzon	Kay Tabor	Fideles Kloeckler
Miriam J. Clarke	E. Elwood Wright	Emily Roberts
Polly Ramsey	Edwin M. Clark	James T. Wiley, Jr.
	1940	
Jack M. Adams	Willathea J. Jackson	Tilden L. Brooks
Agnes B. Barnett	Henry T. Smith	Mary Ford
John B. Clark	Kay Alling	Sidney K. Johnson
	Irene Strickland	
	1939	
Catharine Baker	James Davis	James H. McGuire
Timothy Bullard	H. Talmadge Dobbs	Ordry Palmer
Maymi Walker Chandler	Pickett Hynes	H. Mae Tankersley
D. Rebecca Williams	Harold Willingham	
	1938	
Elizabeth Adams	Alice S. Downing	Thomas A. Seals
E. W. Aldredge	Mary Hammond	H. Earl Strying
Albert P. Clark	Robert C. Lowe, Jr.	M. Christine Wing
	1937	
Marcia Baker	Robert Kimsey	Ben Overstreet, Jr.
Clarence H. Hill	T. M. McClellan	Helen Tucker Thompson
Ewell Y. Jackson	C. Ed Martin	R. Durwin White
	1936	
E. J. Barber	A. D. Gregory, Jr.	Susie Sudderth
Tallulah Davis	Hilda Isakson Jackson	George Wing
Lloyd C. Ginn	Robert Johann	
	1935	
Lamar G. Baker	Elizabeth Curtis Dexter	Robert Strickland
Reuben G. Crimm	Francis M. Osteen	Ted J. Whitehead
	Maurice Strickland	
	1934	
Mildred Chestnutt Brown	J. W. Goldsmith	Antha Mulkey
Francis Duggan	M. D. Harper, Jr.	Robert L. Rivers
	George Manners	
	1933	
F. C. Brandes	Catherine Martin Duggan	B. F. Wells, Jr.
N. E. Boswell	Howard B. Johnson	
	1932	
T. W. Duncan	J. Harry Gault	Ruth Rogers
	Margaret Lloyd	
	1931	
Fae Allen	John Janoulis	C. S. Spinks
W. W. Aycock	C. Roy McCormack	Bernard Suttles, Jr.
E. H. Bishop	H. C. Kitchens	M. Guy Swanson
Mary Cheatham Buchholtz	George E. Parker	M. W. Swint
R. G. Carlsen	Norman E. Pettis	C. T. Zellner
L. C. Evans	John M. Reed, Jr.	J. W. Zuber, Jr.
Richard A. Hills	H. L. Robinson	



# INTRAMURAL KEY



L. CECIL TURNER  
*President*

## AIMS OF INTRAMURAL KEY

... a closer understanding and cooperative spirit among students, and between the student body and school administration.

... an aspiration for greater intellectual achievement.

... a study of student problems to the end that all student life may be enriched, and the progress and best interests of the GEORGIA EVENING COLLEGE be stimulated and promoted.



David Cason



Harold Jackson



Frank McNabb



Pierce Moore



Louis D. Specht





BILL HARTSFIELD  
*President*

# THE SPEAKERS CLUB

The Speakers' Club was founded at the University System of Georgia Evening College, January 26, 1932, for the purpose of serving the school and better fitting the Speakers' Club members for successful life work; by promoting interest in public speaking among its members; by affording those already interested in public speaking an opportunity to improve their abilities; by encouraging participation in inter-collegiate debating; and, as a result, furthering the development of a high standard of education.

William Baxter



David Cason



Robert Gibson



Charlie Hollingsworth



Marcus Morris



Ribert Morris



Thomas Stocks



Cecil Turner



Tommy Van Houten



# THE ALVINIAN CLUB

Organized February, 1945

## OFFICERS

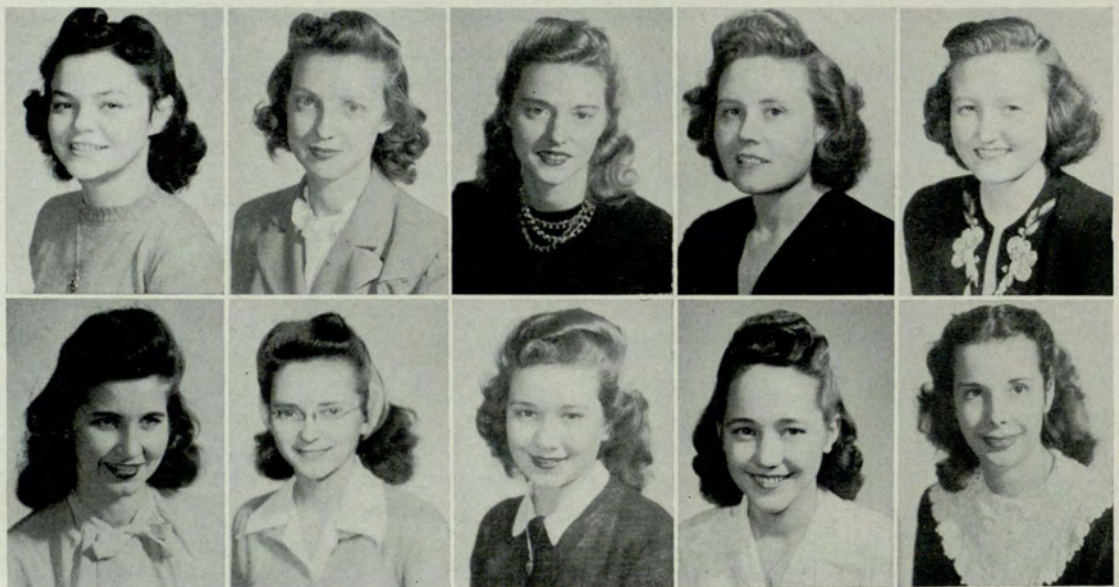
JULIA WHITE ..... *President*  
BILLIE KETTERINGHAM ..... *Vice-President*  
ROUNELLE MARTIN ..... *Secretary*  
CARROLL McMAHON ..... *Treasurer*



JULIA WHITE  
*President*

The object of this club is to encourage friendliness among women students of the Evening College.

Any woman student registered in the Georgia Evening College is eligible for membership.



Jewel Abt  
Kathryn Cofer

Bettie Andrews  
Gwendolyn E. Cox

Joyce Brown  
Gloria Creech

Elizabeth Cathcart  
Ida Creech

Marie Cathcart  
Willodean Crowell





Elaine Crump  
 Nettie Mae Donald  
 Martha Doyle  
 Barbara Anne Evans  
 Julia Bee Grizzell



Eloise Henry  
 Isabell Herzberg  
 Evelyn J. Hyde  
 Mary Jarrett  
 Sarah E. Jones



Juanita S. Kerley  
 Katherine Lay  
 Rounelle Martin  
 Helen Mayer  
 Jimmye Miller



Johnnie Miller  
 Cordelia Moore  
 Patricia McCready  
 Ethel O'Neal  
 Martha Pace



Mary Pace  
 Elizabeth Parker  
 Evelyn Perry  
 Ethel Ransom  
 Ruby Sellers



Anne Simmons  
 Lucy Smith  
 Martha Smith  
 Mildred Stansell  
 Katherine Thompson



Lena Wagnon  
 Laura Ruth Webb  
 Rachel Whatley



# PI CHAPTER

*Installed November 17, 1917*

The objects of Alpha Kappa Psi are to further the individual welfare of its members; to foster scientific research in the fields of commerce, accounts, and finance; to educate the public to appreciate and demand higher ideals therein; and to promote and advance in institutions of collegiate rank courses leading to degrees in business administration.



LUKE DARNELL  
*President*



HALLOWEEN



STAG PARTY



NORRIS RETURNS



# ALPHA KAPPA PSI



Gilbert Bryon



David Cason



Jabez Galt



Bill Jordan



Harold Jackson



Jimmy Knight



Frank McNabb



Willard Shank



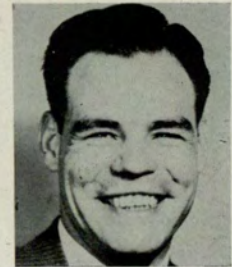
Cecil Turner



Al Kuttner



Frank Tuggle



Ed Williams



# DELTA SIGMA PI

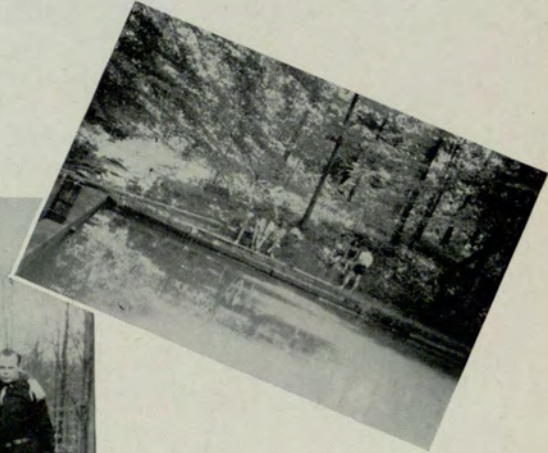


WILLIAM BAXTER  
*Headmaster*

A fraternity organized to foster the study of business in universities; to encourage scholarship and the association of students for their mutual advancement by research and practice; to promote closer affiliation between the commercial world and students of commerce, and to further a higher standard of commercial ethics and culture and the civic and commercial welfare of the community.



DELTASIG  
LODGE IN SPRING



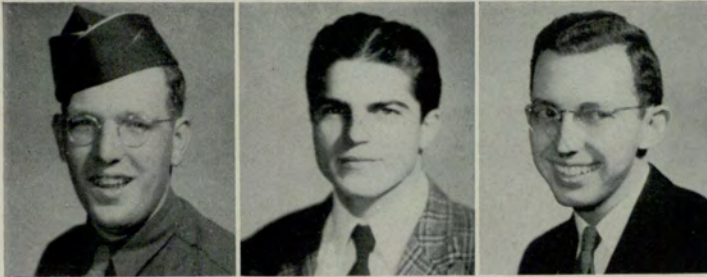
DELTASIG  
POOL



STAG PARTY



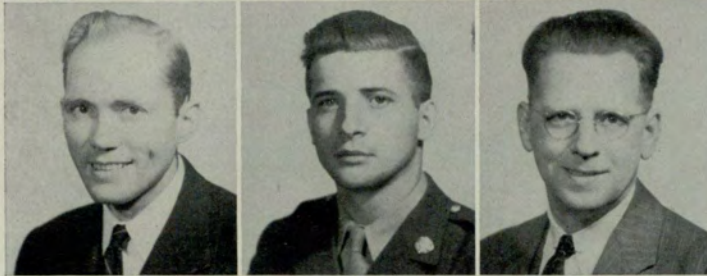
# DELTA SIGMA PI



J. V. Athon

Robert Gibson

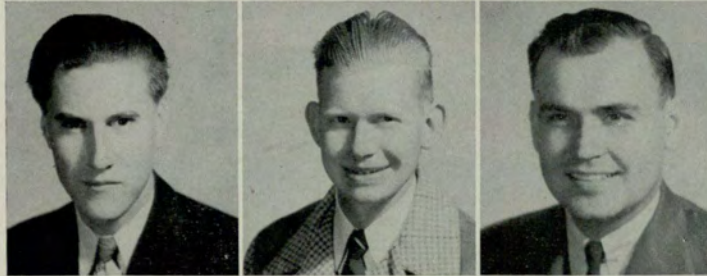
William B. Hartsfield, Jr.



Wilbert H. Hembree

Emory A. Johnston

H. Clyde Kitchens



Carl Kuhlman

John H. Mahl

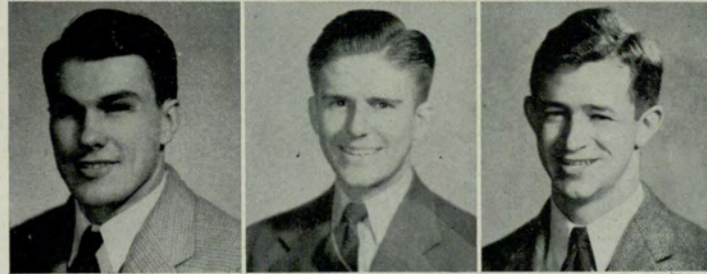
Harvey Livingston



John P. Miller

Marcus M. Morris

Robert J. Morris, Jr.



Lowman R. Oglesby

Thomas F. Stocks

Thomas E. Van Houten, Jr.



# DELTA LAMBDA SIGMA SORORITY



VIVIAN

## OFFICERS

VIVIAN CLOWDIS	President
LUCY SMITH	Vice-President
BETTY WILLIAMS	Recording Secretary
FLORENCE WILLIAMS	Corresponding Secretary
LILLIAN DYAL	Treasurer
BETTY COOPER	Assistant Treasurer
LEONA McMICHAEL	Sergeant-at-Arms

## PURPOSE

For the development of the nobler qualities of the mind, and the attainment of individual and social excellence among its members.

## SORORITY SONG

By Ethelyn Cantrell, 1940

*That we may nobler, richer grow  
In concepts of the mind —  
That we may lend to all we know  
A grace entirely thine.*

*That we may to each other show  
A friendship never ending  
We dedicate ourselves to thee —  
Our Delta Lambda Sigma.*





Eloise Adkins

Blanche Ayers

Joyce Brown

Marian Calloway

Lurline Carlisle

Betty Cooper

Evelyne Crawford

Vivien Crawford

Virginia Darnell

Lallie Dozier

Lillian Dyal

Ruth Fortner

Mary Louise Frick

Isabel Harleston



Lucy



Eloise

Blanche



Joyce

Marian

Lurline

Ruby Harrelson

Louise Johnson

Alberta Loyd

Leona McMichael

Madge Moore

Martha Nalley

Louise Siniard

Carolyn Stone

Lucy Smith

Estelle Snow

Bobbie Turner

Gwen Tweedy

Betty Williams

Florence Williams



Betty

Evelyne

Virginia

Lallie



Lillian

Ruth

Ruby

Louise

Alberta



Leona

Madge

Martha

Louise

Estelle

Betty





JEAN HEYDON  
President

### CREED

*Let us aim as a sisterhood and as individuals to strengthen social ideals in their highest levels, secure the fullest in understanding and enjoy the finest in fellowship.*



# KAPPA THETA SORORITY

1st Vice Pres.

2nd Vice Pres.

Cor. Secy

Rec. Secy

Treas.



LUCY COBB



RUBY SELLERS



LAURA RUTH WEBB



DOROTHY WILSON



KATHRYN COFER





Barbara Dailey



Carolyn Hayes



Eloise Henry



Evelyn Hyde



Jean McClure



Anna Jean Biles  
Elizabeth Branch  
Mary Brazell  
Willodean Crowell



Catherine Ivey  
Lena Wagnon  
Virginia White  
June Wilson

### KAPPA THETA ACTIVITIES

*If you don't think we've had fun,  
Take a peep at what we've done.  
From Miami to St. Simons we hail,  
Hitting the coast like a gale.  
Next event in which to rub,  
Was a swimming party at the Woman's Club.  
Early one morning we did shine.  
And at the Georgian Terrace dined.  
The Paradise Room with all its grace  
For the lovely dance was just the place.  
The week-end at Athens and the Tech-Georgia game.  
Well! we weren't at all lame.  
Then the Christmas Party with all the holly.  
And the dinner, Oh! golly.  
To North Fulton Park let's give a toast  
To the wonderful wiener roast.  
We had one party we called Rush  
With more boys than girls, to that we'll say hush  
This ends another year  
With memories we'll always hold dear.*



Betty McCrosky



Louise McGuire



Carolyn Moore



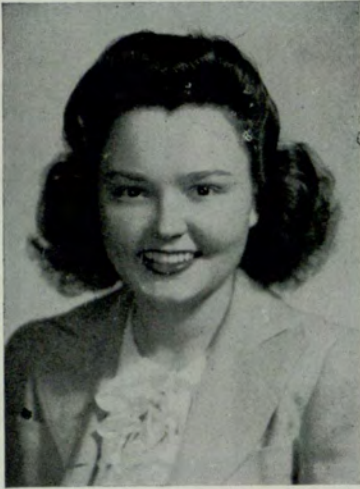
Rosemon Pepper



Margaret Slocum



# PHI CHI THETA



VIRGINIA DARNELL  
*President*

## OFFICERS

VIRGINIA DARNELL .....	<i>President</i>
RUBY HARRELSON .....	<i>Vice President</i>
ELIZABETH CATHCART .....	<i>Treasurer</i>
RUBY SELLERS .....	<i>Corresponding Secretary</i>
MILDRED STANSELL .....	<i>Recording Secretary</i>
MARTHA DOYLE .....	<i>Grand Councillor</i>

## OUR PURPOSE

To promote the cause of higher business education and training for all women, to foster high ideals for women in business careers, and to encourage fraternity and cooperation among women preparing for such careers.







Mary Brazell  
Elizabeth Cathcart  
Lucy Cobb  
Evelyne Crawford  
Ida Creech



Nettie Mae Donald  
Mildred Dorris  
Martha Doyle  
Ruby Harrelson  
Melba Hart



Mary Heeth  
Eloise Henry  
Evelyn J. Hyde  
Mary Jarrett  
Rose Marie Lunsford



Ruth Maddox  
Muriel Mahaffey  
Louise McGuire  
Johnnie Miller  
Anne Murphy



Ruby Sellers  
Margaret Slocum  
Sarah Smith  
Vivian Smith  
Mildred Stansell

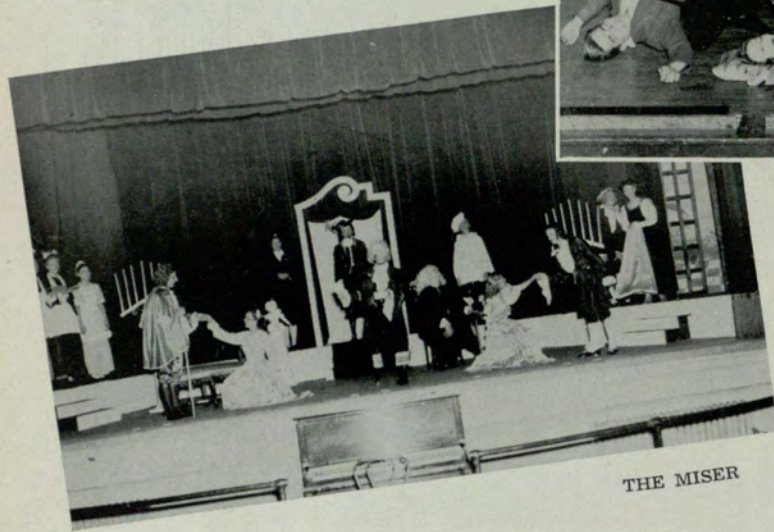


Laura Ruth Webb  
Rachel Whitley  
Virginia White  
Louise Whitmire  
Dorothy Wilson  
June Wilson





"OUT OF THE FRYING PAN"



THE MISER

# PLAY — — CRAFTERS



MISS HAZEL POSS, Director

President

Vice President



Jack Willoughby



Pat Nowell

Secretary



Mickie Bloodworth

Stage Manager

Treasurer



Elbert J. Woods



Sybil Gillman

Zania Anderson

Carolyn Brittingham

Nettie Pearl Coleman



- Stowell Fielding Abbott
- Sara George Alford
- Thomas F. Doster
- Mrs. Ruby Drew
- Wayman Gower
- Mrs. Annie Laura Hall

Helen E. Mayer Hiram W. Moore Elsa O'Callaghan



- Melvin Herman
- Mrs. Alice Latham
- Martha Littlefield
- Lee L. Pozza
- Jerome Whatley



Mary Lee Hammond



Carolyn J. Hayes



Barbara Anne Hill



Mary Jarrett



Elaine Levy



Martha Martin



Nedra Shockley



Louise Siniard



Estelle Snow



Louis Whitmore



William Walsh



June Wilson



Dick Zylman



# GLEE CLUB



JOHN D. HOFFMAN  
*Director*

## OPERETTAS

"Rose Marie".....*Rudolph Friml*  
"The Vagabond King".....*Rudolph Friml*



CAST OF "ROSE MARIE"



# FEATURES





# SPONSORS

*Selected by Dunn Studios not only for beauty and photogenic qualities but mostly for the personality shown in their photographs.*



*Evelyn Hyde*

*By Kappa Theta*

*Evelyne Crawford*

*By Pre-Jr. Class*







*Kitty Cofer*

*By Delta Sigma Pi*

*Lena Wagnon*

*By Senior Class*







*Jean McClure*

*by Freshman Class*

*June Wilson*

*by Phi Chi Theta*





# SNAPSHOTS



1. Tommy and Bill 2. Barbecue 3. Posing 4. Dan and Bob 5. LaRose 6. Waves 7. Between Classes 8. Kitty and Ruby 9. A chip off the old block—Ruth and Tommy 10. Bathing beauties 11. Bit 12. Ruby and Alton 13. Deltasig Houseparty 14. Lou and Vivian 15. Wading 16. St. Simons 17. Tennis fan—Ida 18. Margaret, Lena, and Evelyn 19. Betty and Evelyne—nice beach! 20. Cigarette shortage 21. Struck by a thought 22. Phi Chi Thetas.



# SUPERLATIVES

*Chosen by the Student Body and announced at  
the Junior Popularity Dance*



ELOISE HENRY  
*Miss Evening College*

EMORY JOHNSTON  
*Mr. Evening College*



LENA WAGNON  
*Best-Dressed Girl*

MARCUS MORRIS  
*Best-Dressed Boy*



ELOISE HENRY  
*Best All-Around Girl*

TOMMY VAN HOUTEN  
*Best All-Around Boy*



LUCY SMITH  
*Biggest Wolfess*

BILL BAXTER  
*Biggest Wolf*  
*Out "wolfing" when pictures  
were made*



# SUPERLATIVES



LENA WAGNON—*Most Popular Girl*  
TOMMY VAN HOUTEN—*Most Popular Boy*



VIRGINIA DARNELL  
*Most Versatile Girl*  
RALPH CHAPMAN  
*Most Versatile Boy*



TOMMY STOCKS—*Wittiest Boy*  
JUNE WILSON—*Wittiest Girl*



JEAN HEYDON—*Most Reliable Girl*  
CECIL TURNER—*Most Reliable Boy*



BILL WALSH—*Most Handsome Boy*  
JUNE WILSON—*Most Beautiful Girl*



*We, the Editors and Staff of the 1945  
NOCTURNE, wish to express our sincere ap-  
preciation to our friends in business who  
have so generously contributed to the  
success of this Annual through their  
advertisements.*



“Have a Coke”



It's the  
friendly  
high-sign

BOTTLED UNDER AUTHORITY OF THE COCA-COLA COMPANY BY  
THE ATLANTA COCA-COLA BOTTLING COMPANY



**ORIGINAL WAFFLE SHOP**

Famous  
For Delicious Steaks, Seafood,  
Chicken Dinners  
62 Pryor St. MA. 1552

FOR PRIVATE BANQUETS  
**THE CASABLANCA**  
99½ Peachtree St. JA. 8232

COMPLIMENTS

OF

**A FRIEND**

FINE PORTRAITS

AND

PHOTOGRAPHS FOR  
EVERY PURPOSE

**WILLIAM DUNN STUDIOS**

120 SPRING ST., N.W.

"Friend of Georgia Evening College"

COMPLIMENTS

Of

**FOREMOST DAIRIES**

WA. 6508

125 ELLIS ST.

WE NOT ONLY TRY TO MAKE  
CUSTOMERS OF OUR FRIENDS,  
BUT ALSO FRIENDS OUT OF OUR  
CUSTOMERS.

**MARCUS CLOTHING CO.**

62 Peachtree Street

Thru To Broad





FROM HAYBURNER TO DIESEL  
THE ATLANTA AND WEST POINT RAILROAD,  
AS A PUBLIC SERVANT, HAS TRANSPORTED SEEKERS OF  
KNOWLEDGE TO SEATS OF LEARN'NG  
SINCE 1847

LEARN THE LESSON  
OF THRIFT  
AND GRADUATE TO  
GREATER SAVINGS  
AT  
BIG STAR—LITTLE STAR  
ROGERS STORES



QUALITY—  
At No Extra Cost

EAT  
**MRS. HILL'S  
SANDWICHES**

FRESH—DELICIOUS—  
SATISFYING

Sold In  
THE REFECTORY

**DONT CUSS — PHONE US**

**PRIOR TIRE CO.**

**Peachtree and Pine Streets**

WA. 8866

**WE NEVER CLOSE**

**WOODING'S CAFETERIA**

**40c, 45c, and 50c  
DINNERS**

*SERVING TIME:*

Breakfast . . . . . 6:45 to 9:15 A. M.  
Lunch . . . 11:00 A. M. to 2:15 P. M.  
Dinner . . . . . 5 to 7:30 P. M.

YOUR BLOOD MAY SAVE THE  
LIFE OF A FIGHTING MAN!  
CALL THE RED CROSS BLOOD  
BANK, WA. 9635 FOR AN  
APPOINTMENT!

Main 9233

Res. VE. 3736

**CAPITAL PLUMBING AND  
HEATING CO.**

L. F. McDONALD

PLUMBING & HEATING CON-  
TRACTORS

Commercial and Residential Work

166 HUNTER ST., S.W.



**J. P. STEVENS**

**ENGRAVING COMPANY**

Wedding, Reception, and  
Visiting Cards

Personal Stationery

110 Peachtree St.      Atlanta, Ga.

COMPLIMENTS

OF

**CAMPBELL COAL CO.**

238 MARIETTA ST., N.W.

JA. 5000

FOR BETTER SHAVES

Use

**LEE RAZOR BLADES**

(Double Edge)

THEY'RE KIND TO TENDER  
SKIN

ON SALE AT LEADING STORES

Distributed By

**LEE PRODUCTS CO.**

437 Whitehall St., S.W.  
Wa. 3583



**FROST MOTOR CO.**

AUTOMOTIVE SPECIALISTS

Everything For The Motorist Under  
One Roof

450 PEACHTREE STREET  
WA. 9070



★ ★ ★

***For Gifts of Distinction***

# Maier & Berkele

JEWELERS TO THE SOUTH SINCE 1887

***111 PEACHTREE***

★ ★ ★

## The Best Tread Is A Hawkinson Tread

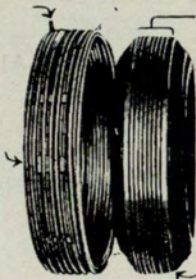
**GREATER MILEAGE  
AND LONGER LIFE GUARANTEED**

Heat goes  
in here

Comes out  
Here

Only  
This  
Simple  
Ring

Nothing  
More



No Heat  
Touches  
the  
Sidewalls  
of Your  
Tire

Patented

*Only The Tread Surface is Renewed  
One-Day Service by Appointment*

**HAWKINSON TREAD SERVICE**

*Distributors of Mohawk Tires*  
457 Peachtree, N. E. HE. 3141

Phonograph Records  
Radios and Radio Service

**BAME'S, INC.**

60 Broad St., N.W. WA. 5776  
ATLANTA

---

**MILTON BRADLEY CO.  
Of Ga., Inc.**

Educational Materials  
Toys — Games

384 FORREST AVE., N.E.



*Compliments of*

**THE LOVABLE BRASSIERE CO.**

845 SPRING ST., N. W.

FRANK GARSON

MAJOR ARTHUR GARSON

S/SCT. DAN GARSON

**GORDY TIRE CO.**

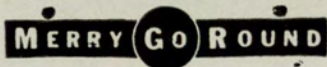
Can Keep 'Em Rolling



EXPERT TIRE REPAIRING AND  
RECAPPING

COMPLETE SERVICE STATION

119 Ponce De Leon Ave.  
VE. 3531 VE. 3531



COMPLIMENTS  
OF





*Compliments of*

**A FRIEND**

*Congratulations to ambitious students  
who are willing to sacrifice their  
leisure time for self-improvement.*

**LAWRENCE FURNITURE CO.**



You of G. E. C. will agree with us that these are not only busy days, but busy nights, too.

For, like us, you serve by day and far, far into the night.

It's tough going, sometimes, but it's worth while.

# YELLOW CABS

**WA 0200**

The Best Dressed Men Wear . . .



**SCHWOB CO.**

Albany

Atlanta

Columbus

LaGrange

Macon

Savannah

## REWEAVING

**IT IS TRUE WHAT THEY SAY  
ABOUT DIXIE REWEAVERS**

America is calling for preservation of woolen garments. We reweave any garment damaged by moths, burns or tears, restoring it's original appearance.

**Atlanta's Only Genuine Reweavers**

Runs in Nylon Hose Repaired

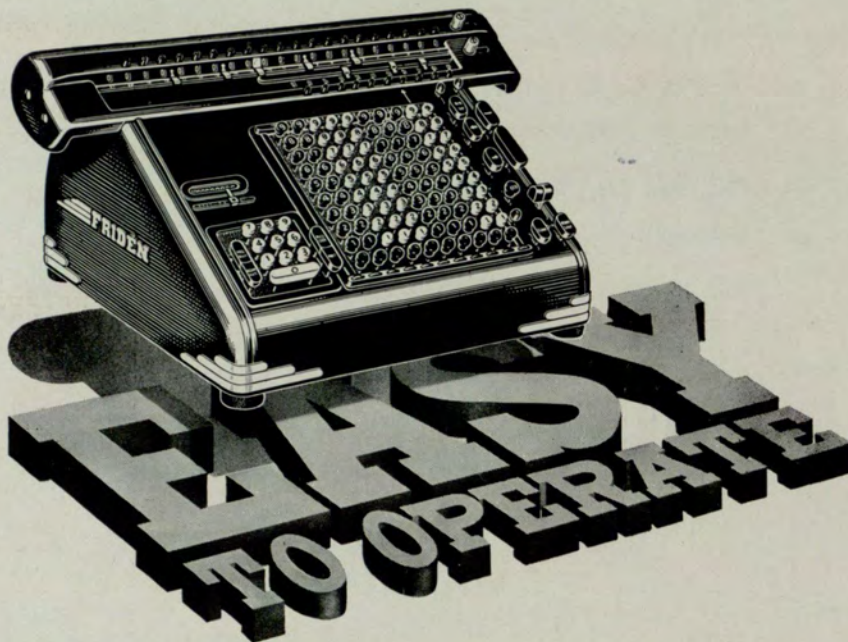
TELEPHONE: JA. 3886

DIXIE REWEAVERS

*Pioneer Reweavers in Dixie*

88 Broad ST., N. W.





**FRIDEN . . . High-Speed Automatic Calculators,**

offer the solution of the problems in business today, created by the critical shortage of competent clerical help. FRIDEN FULLY-AUTOMATIC CALCULATORS are available when the applications to obtain deliveries have been approved by the War Production Board. Telephone your local Friden Representative for information.

Friden Mechanical and Instructional Service is available in approximately 250 Company controlled Sales Agencies throughout United States, Canada.

**FRIDEN**  
CALCULATING MACHINE CO., INC.

EXECUTIVE OFFICES AND PLANT • SAN LEANDRO, CALIFORNIA, U. S. A.

171 LUCKIE STREET

ATLANTA, GA.





Compliments Of

ATLANTA'S OLDEST  
FORD DEALERS

**ERNEST G. BEAUDRY, INC.**

143 Cone St.

JA. 0445

ENJOY A FINE LUNCH  
Or A  
DELICIOUS STEAK DINNER  
BEFORE SCHOOL

At the

**LUCY WOOD CAFETERIA**

"Famous for Chicken  
Pan Pie"

64 MARIETTA ST.

Across From the Georgia Power  
Co.



Compliments of

**Louis Bates**

Agency Director

NEW YORK LIFE  
INSURANCE CO.



24 YEARS OF  
DEPENDABLE SERVICE

To the

MOTORIST

We Appreciate Your Patronage

**SAM MARTLIN**  
**U. S. TIRE SUPPLY CO.**

603 W. PEACHTREE ST.  
AT NORTH AVE.  
VE. 5836



CORDIALLY YOURS . . . .

## *Holzman's*

"Yours" for the very best in jewelry  
and gift items—

"Yours" for the most reasonable  
prices—

"Yours" for courteous, friendly  
service—

Christine Wing, Evening College  
graduate, invites you to visit us and  
make Holzman's "Your" gift Head-  
quarters

## **Holzman's**

One of America's *Finer* Jewelers

29 BROAD ST., S.W.

## **RANDALL BROS., INC.**

COAL—LUMBER  
FURNACES—STOKERS

WA. 4711

---

For the best CHOP SUEY or  
STEAKS in Atlanta . . .

We recommend

## *The Shangri-la*

106½ Luckie Street, N.W.  
ATLANTA

Interwoven Sox Van-Heusen Shirts  
Mallory Hats

## **ZIMMERMAN'S**

108 PEACHTREE ST.  
Piedmont Hotel  
JA. 6037

---

### **ADAMSON PRINTING COMPANY**

Serving the South for More than  
Thirty-Five Years

25 WARREN PLACE — MA. 2867

ASK YOUR GROCER

FOR

## **AGEN**

FRESH FROZEN  
FRUITS AND VEGETABLES

Distributed By

## **CAPITOL FISH CO.**

455 WHITEHALL ST., S.W.



## GORDON'S



Fresh  
POTATO CHIPS  
SALTED PEANUTS  
PEANUT BUTTER SANDWICHES  
CAKES - NUTS - CANDIES

### Gordon Foods

Trucks Serving the South



"Clothes don't have  
to be new to be smart.  
They do have to be  
Clean"

## GOLD SHIELD

Launderers—Cleaners

CONGRATULATIONS

**CRISWELL BAKING CO., LTD.**

128 PINE ST. N.E.  
AT. 5757 Atlanta, Ga.

---

**JOHN JARRELL, INC.**

Distinctive Men's Wear  
Sporting Goods

84 BROAD ST., N.W.



MEET YOUR FRIENDS

at the

## MELBA CAFETERIA

Luckie at Forsyth Street





**BUY WAR BONDS**

then invest in

**STODDARD**

**DRY CLEANING**

TO KEEP FINE CLOTHS  
IN FINE SHAPE

Phone VE. 6601

713 West Peachtree (Main Plant)  
2933 Peachtree Road  
136 Peachtree Street  
1168 Euclid Ave.  
620 Lee Street

COMPLIMENTS

Of

**SHIP-A-HOY  
RESTAURANT**

"The Symbol of Fine Food"

95 LUCKIE ST., N.W.

SPEND YOUR OFF NIGHTS  
AT THE

**ROLLERDROME**

ATLANTA'S PALATIAL SKATING  
RINK

Enjoy An Evening Of Fun and  
Healthful Recreation

Plan A Private Party

Class Or Private Instruction If  
Desired

PENN AND PONCE De LEON  
AVES.



COMPLIMENTS

OF

A FRIEND





COMPLIMENTS OF

**HARRY BARFIELD CO.**

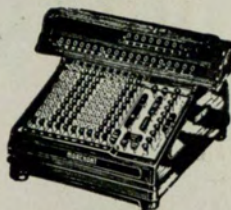
*Master Printers*

142-4 SPRING ST., N.W.

**MARCHANT**

*SILENT SPEED*

CALCULATORS  
NOT AVAILABLE



ALL ELECTRIC      FULL AUTOMATIC  
Reduce Errors, Speed Figure Production  
Save Valuable Office Hours  
No Need for Skilled Operators  
No Training Required

SEE THE

**MARCHANT**

**A. T. DAVIS**

DISTRICT AGENT

Suite 211 Bona-Allen Bldg.      WALNUT 6731

**J. P. ALLEN & CO.**  
*Atlanta*

THE FASHION

AUTHORITY OF THE

SOUTHEAST

**SICKNESS-ACCIDENT  
HOSPITALIZATION  
INSURANCE for  
Everyone!**

**MUTUAL BENEFIT**  
HEALTH-ACCIDENT  
ASSOCIATION  
OMAHA

WORLD'S LARGEST  
EXCLUSIVE HEALTH &  
ACCIDENT CO.

515-524 William-  
Oliver Bldg.  
WA. 9577



# University System of Georgia

University System of Georgia Center, in Atlanta

## EVENING COLLEGE

and

## JUNIOR COLLEGE DAY CLASSES

CO-EDUCATIONAL

Day and evening classes are given to meet the needs of students as follows:

1. Those who wish to take work for University credit toward the degrees of Bachelor of Arts, Bachelor of Science in Commerce, Bachelor of Arts in Education, and Bachelor of Science in Education.
2. Students who wish to receive the degree of Bachelor of Commercial Science, through the Evening College, for work done entirely in the University Center in Atlanta.
3. Students who wish to complete work for a Junior College Diploma of graduation from the University System of Georgia in the fields of Bachelor of Arts, Bachelor of Science, Bachelor of Arts in Education, Bachelor of Science in Commerce, and Bachelor of Science in Education.
4. Students who wish to complete work for a Certificate in Business Administration or for a Certificate in Secretarial Training.
5. Special students taking selected courses and not having in view an extensive program of study.

*Earn While You Learn... Learn While You Earn*



DATE DUE

XXXXXX	



GEORGIA STATE UNIVERSITY  
  
3 0785 00576 5201



