

THE  
**RAMPWAY**

**1947**



**University System  
of Georgia**

GEORGIA STATE UNIVERSITY  
LIBRARY

---



# The Rampway



WILLIAM T. MARR, *Editor-in-Chief*  
ELBERT W. WOODS, *Associate Editor*  
WILLIAM E. BURKE, *Business Manager*

LIBRARY  
UNIVERSITY EXTENSION  
CENTER - ATLANTA

R 378.73  
Rampway  
1947

LIBRARY  
UNIVERSITY EXTENSION  
CENTER - ALBANY

~~LD 1961  
G85 R3  
1947~~

LD 1965  
.R35  
1947

**LIBRARY**  
**University Extension**  
**Center - Atlanta**

With the belief that through unity we shall find the strength for future progress, and with the hope that the 1947 Rampway, the consolidated annual of the Day and Evening Divisions, will be remembered as the initial step toward the ultimate goal of unified spirit and endeavor . . . .

the Editors and Staff dedicate the 1947 Rampway to the University System of Georgia Center, its students, faculty, activities, organizations, and all things which make it an outstanding institution in the field of education.



OUT FRONT



"QUIET PLEASE"



"BIOLOGY LAB"



"AROUND 'THE JUKE'"



"REGISTRATION"



"DOWN 'THE RAMP'"





DR. GEORGE M. SPARKS  
DIRECTOR  
UNIVERSITY SYSTEM OF  
GEORGIA CENTER  
AB., MA., LL.D.  
MERCER UNIVERSITY  
OXFORD, ENGLAND

# ADMINISTRATION

PROF. HAL HULSEY  
DEAN OF MEN



MISS PICKETT HYNES  
DEAN OF WOMEN



DR. NEWTON S. HEROD  
DEAN OF CENTER



PROF. V. V. LAVROFF  
TREASURER



DR. WILLIAM M. GOLDSMITH  
DEAN OF DAY DIVISION



PROF. ERNEST H. EMORY  
REGISTRAR



COL. CHARLIE MORGAN  
VETERAN'S ADMINISTRATOR



MRS. WILLIAM C. CANTRELL  
SECRETARY

# DEPARTMENT CHAIRMEN



DR. JAMES E. ROUTH  
English



PROF. HAL HULSEY  
Modern Languages



PROF. V. V. LAVROFF  
Mathematics



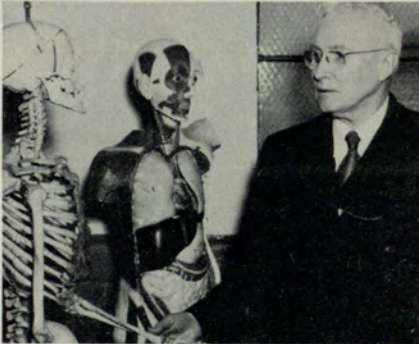
PROF. M. D. DUNLAP  
Economics



DR. NEWTON S. HEROD  
Physics



PROF. LUCIAN BELL  
Chemistry



DR. ELMER G. CAMPBELL  
Biology



DR. CARL MAUELSHAGEN  
History



DR. R. R. HOLLINGSWORTH  
Education and Sociology



DR. WILLIAM E. HINRICHS  
Psychology



... *"His words burned like a lamp"*

# FACULTY

- HOWELL B. ANDERSON, B.S., B.D.  
MARGARET ACREE, A.B., LL.B., M.S.C.  
ROSCOE ARANT, B.A., M.A., Ph.D.  
LLOYD E. BAUGHAM, B.A., M.A.  
LUCIAN R. BELL, A.B.  
FRANK C. BOLSER, A.B., M.A.  
PAUL G. BLOUNT, A.B., M.A.  
DANA E. BRANTLEY, JR., B.S.  
MALCOLM A. BRENNER, B.C.S., C.P.A.  
JAS. CHRISTOPHER BROWN, A.B., M.A.  
HERBERT BURGESS, B.S.  
JAMES C. CAMP, A.B., M.A.  
ELMER G. CAMPBELL, A.B., M.S., Ph.D.  
FRANCIS X. CARBERRY, B.S., M.B.A.  
MYRTA T. CARPER, A.B., M.A.  
RUTHERFORD A. CHRISTOPHER, B.S.C.  
JOHN T. COCUTZ, B.A., M.A., D.T.  
LEONARD H. COLEMAN, B.S., M.S.  
BERTRAM O. COSBY, B.S., M.S.  
JAMES H. DAVIS, B.C.S.  
CORLYSS L. DEADWYLER, B.C.S.  
C. JULES DOUGLAS, A.A., B.S.  
DEAN E. DRYER, B.S., M.A.  
MILES D. DUNLAP, B.S., M.A.  
ERNEST H. EMORY, A.B., B.S.  
EDWARD L. FLOYD, A.B., M.A., LL.B.  
LINDLE E. FREEMAN, A.B., M.A.  
ELBERT E. GIBBONS, B.S.  
WILLIAM M. GOLDSMITH, B.Pd., A.B., A.M., Ph.D.  
REMBERT A. GREEN, A.B., M.A.  
VANN GROOVER, A.B., LL.B.  
WILLIAM R. HAMMOND, B.S.C., M.B.A.  
MARY R. HEETH, B.C.S.  
NEWTON S. HEROD, B.A., M.A., Ph.D.  
MAX L. HIBBS, B.S., M.A.  
HENRY L. HILLS, B.C.S.  
WILLIAM E. HINRICHS, B.S., Ph.D.  
JOHN D. HOFFMAN, MUSIC DIRECTOR  
ROBERTSON R. HOLLINSWORTH, A.B., M.A., Ph.D.  
LINTON C. HOPKINS, SPECIAL LECTURER  
HARRY H. HUDSON, A.B., M.A.  
HENRY M. HUIE, A.B.  
HAL HULSEY, A.B., M.A.  
HENRY R. HUNTER, B.S., M.A., Ph.D.  
PICKETT HYNES, B.C.S., M.A.  
OLLIE G. KINCAID, A.B.  
HINTON E. KINNEY, B.S., M.A.  
CHARLES C. MORGAN, SR., B.Phg.  
VIACHESLAV V. LAVROFF, B.S.C., M.A.  
ELDRED R. LEDBETTER, B.S.  
JACK A. LEE, B.S., M.S.  
ALTON B. PARKER LILES, A.B., B.S., M.A.  
B. E. LINDSEY, B.S., A.B., M.S.C.  
WYMAN C. LOWE, B.Ph., A.M.  
WILLIAM F. LOZIER, A.B., LL.B.  
GEORGE E. MANNERS, B.C.S., C.P.A.  
WARREN C. MADDOX, A.B., A.M.  
CARL MAUELSHAGEN, B.S., M.A., Ph.D.  
JAMES E. MAYO, A.B., M.A., C.P.A.  
WILLARD R. MERRELL, A.B., LL.B.  
ELLENE W. MORSE, B.S.  
CLARKE OLNEY, Ph.B., A.M., Ph.D.  
WADE B. PERRY, B.S.  
WILLIAM B. PIRKLE, A.B., A.M.  
ERNEST PLAMBECK, B.S., M.B.A., LL.B.  
JAMES R. POLK, B.S.  
JAMES E. ROUTH, A.B., Ph.D.  
ROBERT S. SCHARF, Ph.D.  
GLENN N. SISK, A.B., M.A.  
HERBERT O. SMITH, A.B., M.A., LL.D.  
WILLIAM M. SUTTLES, B.C.S., B.D., Th.M.  
JULIA E. SWINEY, B.S.  
MARY M. TALLANT, R.N.  
CHARLES T. TAYLOR, B.S., M.A., Ph.D.  
NELL L. TROTTER, B.A., M.A.  
LESTER C. TURNER, LL.B., B.B.A.  
FRANCES E. TURNER, B.A.  
JOHN R. WALKER, A.B., A.M., M.A.  
GAINES W. WALKER, A.B., M.A., Ph.D.  
NOAH WARREN, B.S.C., M.A., C.P.A.  
WILLIAM H. WILLSON, A.B., M.B.A.  
JOSEPH H. WOLFE, B.S.C., LL.B.  
GRIGSBY H. WOOTEN, B.S.C., LL.B.  
CHARLES B. WRAY, B.B.S., M.B.A., C.P.A.  
RONALD C. S. YOUNG, A.B., D.D.  
J. LINDEN YADEN, A.B., M.A., Ph.D.

PROF. WALTER G. ALLEN  
DR. ROSCOE ARANT

PROF. LOYD E. BAUGHAN  
PROF. F. C. BOLSER

PROF. DANA E. BRANTLEY, JR.  
PROF. MALCOLM BRENNER

PROF. FRANCIS X. CARBERRY  
MRS. CARPER



PROF. R. A. CHRISTOPHER  
PROF. JOHN T. COCUTZ

PROF. JAMES H. DAVIS  
PROF. DEAN DRYER

PROF. VANN GROVER  
PROF. WILLIAM R. HAMMOND

PROF. MAX L. HIBBS  
PROF. H. M. HUIE



PROF. WYMAN C. LOWE  
PROF. WILLIAM F. LOZIER

PROF. WARREN C. MADDOX  
PROF. JAMES E. MAYO

PROF. W. R. MERRELL  
PROF. WADE B. PERRY

PROF. WILLIAM B. PIRKLE  
PROF. ERNEST PLAMBECK



DR. ROBERT S. SHARF  
PROF. GLENN N. SISK



DR. H. O. SMITH  
PROF. WILLIAM B. SUTTLES



MISS JULIA SWINEY  
MRS. LINNIE TALLANT

MISS FRANCIS E. TURNER  
PROF. C. B. WRAY





... *"With years a richer life begins"*



# SENIORS



## OFFICERS

EMORY JOHNSTON . . . . . *President*  
NEIL HOPKINS . . . . . *Vice President*  
VIRGINIA DARNELL . . . . . *Secretary*  
TED O'CALLAGHAN . . . . . *Treasurer*

MILDRED BLOODWORTH

Δ Δ Σ

Spalding, Sibley, Troutman, and Kelley

Entered from Bob Jones College, Cleveland, Tenn.; Phi Chi Theta 46-47, National Counselor 46-47; Delta Lambda Sigma 46-47, Corresponding Secretary 46-47; Playcrafters 44-45, Secretary 43-44, President 44-45; Crimson Key 46-7, Vice President 46-47; Playcrafters Key 45.



ROBERT E. BUTTOLPH

Vaughan Textile Corp.

Entered from Syracuse University.



JOHN WILSON CASH

McKesson and Robbins, Inc.

Entered from Russell High School; Alpha Kappa Psi 34-47; President Freshman Class 34.

ROBERT LAMAR CHAFFIN

Entered from Georgia Junior College; Debate Club 45-47, Vice-President 46-47; Phi Sigma Alpha 45-47; International Relations Club 45-47; Demos Club 46-47.



EVELYNNE CRAWFORD COCHRAN

Δ Δ Σ

A. B. Dick Company.

Entered from Girls High School; Delta Lambda Sigma 42-47, Recording Secretary 42-43, President 43-44; Phi Chi Theta, 45-47, Corresponding Secretary 46-47; Interfraternity Council 43-46, Secretary 44-45, Vice President 45-46; Student Council 44-46, Secretary 45-46; Crimson Key 45-46; Nocturne 43-46, Asst. Editor 44-45; Co-Editor 45-46; Treasurer Pre-Jr. Class 44-45; Vice President Junior Class 45-46; Nocturne Beauty Section 45; Kappa Theta Cup 45; Delta Lambda Sigma Cup 46; Most Popular Girl '46.



**MARVIN WAYNE COOPER**  
Entered from Georgia Junior College; Debate Club 45-47, Assistant Secretary General 45-46; International Relations Club 45-47; Demos Society 46-47.



**ELAINE CRUMP**  
Internal Revenue U. S. Government.  
Entered from Franklin High; Alvinian Club; Student Council 45-46.

**LUKE J. DARNELL**  
ΑΚΨ

Georgia State Department of Labor  
Entered from Tech High School; Alpha Kappa Psi 41-47, President 43-44, Secretary 44-45; Venetian Society 45-46; Student Council 38-39, 45-46; Interfraternity Council 43-46.

**VIRGINIA BERRY DARNELL**  
ΔΔΣ

Board of Regents - Agriculture Committee  
Entered from Atlanta Junior College; Delta Lambda Sigma 42-47, President 45-46; Phi Chi Theta 42-47, President 44-45; Crimson Key 44-47; Interfraternity Council 42-43, 44-47, Secretary and Treasurer 46-47; Student Council 42-43; Secretary Sophomore Class 43-44; Secretary Pre-Jr. Class 44-45; Secretary Junior Class 46-47; Secretary Senior Class 46-47; Phi Chi Theta Award 46; Beauty Section Nocturne 46; Most Versatile 44-45; Best All-Round 45-46; Miss Evening College 46-47.

**PATMAN MOORE DOBBINS**  
ΔΣΠ

Ford Motor Company.  
Entered from Marietta High School; Delta Sigma Pi; Delta Mu Delta 46-47, Vice President 46-47; Venetian Society; Intramural Key.



DIXIE DRAKE

Powell, Goldsmith, Frazer & Murphy.

Entered from University of Georgia, Athens, Georgia.



HEBB EASTERLING

ΦΧΘ

Army Audit Agency.

Entered from Flora McDonald College, Red Springs, (N. C.); Phi Chi Theta 45-46, Treasurer 46-47; Student Council 44-45.



JOHN EAVES

ΔΣΠ

Southern Bell Telephone & Telegraph Company.  
Entered from Boys' High School; Delta Sigma Pi 39-47;  
Intramural Key 46-47, Vice President 46-47.



LURLINE MARTIN EVERITT

U. S. Public Health Service.

Entered from Peabody College,  
Nashville, (Tenn.).

TOM FARRAR

Entered from North Georgia College,  
Dahlonega, (Ga.).

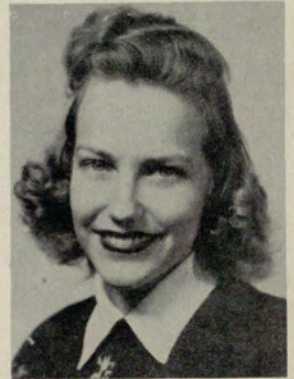


JOHN L. GRAY  
Stevens Pictures, Inc.  
Entered from University of Virginia.



LONETTE B. GREGORY  
K Θ  
A. J. Gocking Company.  
Entered from Cedartown High School; Phi Chi Theta  
42-47, Vice President 45-46, President 46-47; Kappa Theta  
46-47; Delta Mu Delta 46-47, President 46-47; Crimson Key  
45-47; Interfraternity Council 45-47; Student Council 46-47;  
Kappa Theta Cup '46; Intramural Key '46.

SARA MCDANIEL GREGORY  
K Θ  
U. S. Treasury Department (Internal Revenue).  
Entered from South Georgia Teachers College;  
Kappa Theta.



FRANCES HICKS  
First National Bank.  
Entered from G. S. C. W., Milledge-  
ville, (Ga.).

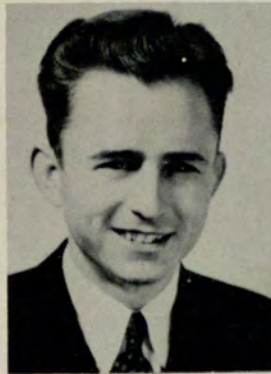
MIRIAM HINE  
Entered from Avondale High School;  
Glee Club; Dramatic Club; Flambo.



HIRAM J. HONEA  
Δ Σ Π

Esquire Cleaners.

Entered from Marble Hill High School; Delta Sigma Pi 39-47, Junior Guide; Student Council President, 46-47; Glee Club; Speakers Club; Intramural Key 46-47.



JOHN NEIL HOPKINS  
Δ Σ Π

Western Venetian Blind Company.

Entered from Tech High; Delta Sigma Pi 40-47, Master of Festivities 40-41, Senior Warden 41-42; Student Council 38-39; Treasurer Pre-Junior Class 40-41; Vice President Senior Class 46-47.



BILL HUMPHRIES

Entered from Americus High School

HAROLD F. JACKSON  
Α Κ Ψ

A & P Tea Company.

Entered from Georgia Tech; Alpha Kappa Psi 44-47, President 45-46, Master of Rituals 46-47; Venetians 46-47, Historian 46-47; Intramural Key 45-47, Vice President 45-47; Masonic Club 46-47; Student Council 45-47; President Junior Class 45-46; Associate Editor Signal 46-47; Nocturne Staff 45-47; Most Reliable Boy 45-47.



FRED H. JOBSON, JR.

Jobson Manufacturing Company.  
Entered from Georgia Tech.



MARTHA JOHNSON  
Veterans Administration.  
Entered from Martha Berry College.



EMORY A. JOHNSTON  
Δ Σ Π  
The American Thread Company.  
Entered from Tech High; Delta Sigma Pi 41-47; Master of Ceremonies 42-43; Junior Warden 43-46; Venetian Society 46-47; Student Council 43-47; Interfraternity Council 43-44; Homecoming Banquet 43-44, 46-47; President Junior Class 43-44; President Senior Class 46-47; Vice President of Student Council 44-45; Mr. Evening College 44.

W. JAN KELLER.  
Α Κ Ψ

Brown Distributing Company.  
Entered from North Fulton High; Alpha Kappa Psi 40-47, Secretary 41-42, President 42-43, Associate Editor AKPsi "PI-LOT" 40-42, Editor AKPsi "POLIT" 42-43, Trustee, AKPsi Bldg. Corp. 42-43, 45-47, Treasurer AKPsi Bldg. Corp. 42-43, Vice-Chairman, Board of Trustees, AKPsi Bldg. Corp. 45-47; Venetian Society 41-47, 1st Vice-President 42-43; Interfraternity Council 42-43; Picture Editor of Nocturne 41-42; Manager "Owls" Basketball Team 42-43; Student Council 40-43, 46-47, Secretary of Student Council 41-42; Vice President of Freshman Class 40-41; President of Sophomore Class 41-42; Finance Chairman of 9th Annual Homecoming Banquet '42; Signal Staff 41-42; Intramural Key 42-47, President Intramural Key 46-47; Mr. Evening College 42-43; Most Popular Boy 46-47.



CHARLES F. KENT  
Α Κ Ψ

State Military Department.  
Entered from Emory University;  
Alpha Kappa Psi 38-47; Venetian Society 38-47.



VERONA KILLINGSWORTH  
U. S. Public Health Service.

Entered from Martha Washington College; Spur Club 39-47, President 45-47; Interfraternity Council 46-47; Fermatia Club 38-39.



ROGER A. LORRAIN

Α Κ Ψ

Davison-Paxon.

Entered from Georgia Junior College; Alpha Kappa Psi 46-47; Student Council 45-46; Glee Club 44-45; Dramatic Club 44-45; International Relations Club 44-45.



MARTHA LEONA McMICHAEL

Δ Λ Σ

Retail Credit Company.

Entered from Atlanta Junior College; Delta Lambda Sigma 44-47, Sergeant-at-Arms 44-45; Crimson Key 44-47; Treasurer 44-45.



JAMES HARRIS McNABB

Δ Σ Π

The Red Rock Company.

Entered from Boys' High School; Delta Sigma Pi 39-47, Scribe 40-41, Junior Warden 41-42, Senior Warden 42-43, Headmaster 46-47; Intramural Key 41-47, Vice President 42-43; Student Council 40-43, 46-47, Vice President 42-43; Venetian Society 42-47; Speakers Club 40-43; Editor Nocturne 42-43; President of Sophomore Class 40-41; President of Pre-Junior Class 41-42; Vice President of Junior Class 42-43; Delta Mu Delta Scholarship Key '42; Alpha Kappa Psi Medalion '43.



LOUISE NICHOLSON

ELSA O'CALLAGHAN





THEODORE PETER O'CALLAGHAN  
Δ Σ Π

Southern Bell Telephone & Telegraph Company.  
Entered from Boys' High School; Delta Sigma Pi 42-47;  
Veterans Club 45-47, 1st Vice President 45-46, President  
46-47; Speakers Club 42-47; Student Council 45-46; Inter-  
fraternity Council 45-46.



CECIL A. POOL  
Α Κ Ψ

Fireman's Fund Insurance Company.  
Entered from Boys' High School; Alpha Kappa Psi 40-47;  
Venetian Society 40-47; Intramural Key 46-47; Treasurer  
of Pre-Junior Class 41-42; Treasurer of Junior Class 42-43;  
Student Council 42-43.

LINING SANDERS  
Federal Public Housing Authority.  
Entered from University of South Carolina.

CARL SANDIFORD  
W. T. Durban Company.  
Entered from Commercial High.

HENRY W. SHARP  
Α Κ Ψ  
Sears Roebuck & Company.  
Entered from Boys' High School;  
Alpha Kappa Psi, Treasurer 42-43.



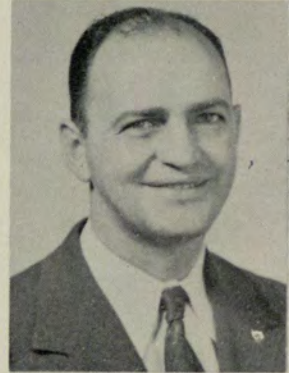
WILLIAM J. THOMAS  
Α Κ Ψ  
Rich's Inc.

Entered from Russell High; Alpha Kappa Psi, President 42-43, 46-47, Vice President 40-41; Venetian Society; Glee Club 37-43; Student Council 43-44; Interfraternity Council 42-43.



MCCOY WHITE  
Δ Σ Π

Otis Elevator Company.  
Entered from 7th A & M High School, Powder Springs, (Ga.); Delta Sigma Pi 39-47; Treasurer 31-42, Historian 40-41; Venetian Society 40-47, Treasurer 42-43; Intramural Key 41-47.



LOUISE WHITMIRE  
Δ Δ Σ

Lederle Laboratories, Inc.  
Entered from South Business University, Atlanta; Phi Chi Theta 44-47, Recording Secretary 46-47; Delta Lambda Sigma 46-47; Playcrafters 44-47, Treasurer-Business Manager 45-46; Crimson Key 45-47, Secretary 45-46, President 46-47; Alvinian Club 45-47.



CECIL P. WILLIAMS  
Α Κ Ψ  
Sears Roebuck & Company.  
Entered from Fulton High; Alpha Kappa Psi 46-47; Venetian Society 46-47; Student Council 46-47.

ELBERT W. WOODS  
Δ Σ Π  
Entered from Georgia Junior College; Delta Sigma Pi 46-47; Venetian Society 46-47; Student Council 46-47; Co-Editor of RAMPWAY 46-47; Playcrafters 44-46, Stage Manager 45-46.

# JUNIORS



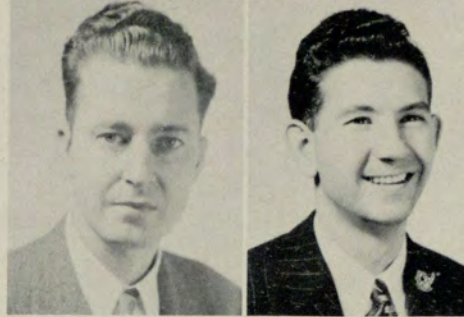
## OFFICERS

AL KUETTNER . . . . . *President*  
BEN BINFORD . . . . . *Vice President*  
ANDY FRANKLIN . . . . . *Secretary*  
JACK CASON . . . . . *Treasurer*

JEWEL ABT  
LAVERNE ADAMSON



ROBERT F. ANTHONY  
BEN BINFORD, JR.



FRED BRANAN  
BILL BURKE



JOHN A. CLASON  
MRS. JEAN CLARK



BETTY COOPER  
ANNABELLE COX



CLARENCE M. COX

SUE DONALDSON



VIVIAN EAVES

JIMMIE EDWARDS



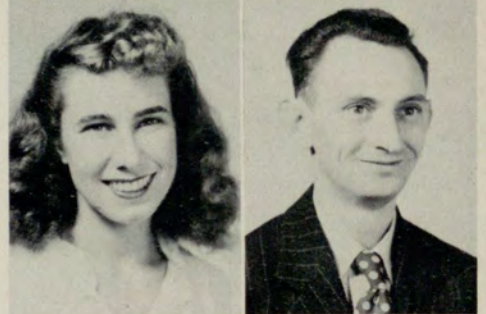
DONALD FLOYD

ANN FOSTER



SAM FRANKLIN

JULIA B. GRIZZELE



WANDA HAMBY

W. O. HAMMOND

RUBY HARRELLSON

ROBERT J. HEAD



LOUIS HEALD

ED HOWELL



THOMAS J. HURST

MARY E. HUNT



DIXON JAMISON

DON JOHNSON



AL KUETTNER

THELMA PHYLISS LEWIS



JOHN PAUL McCURRY

JACK McNEIL

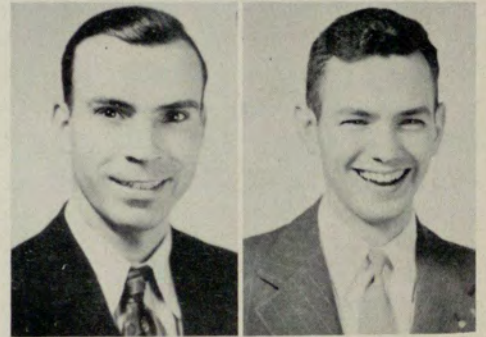


CHARLES MABRY

ROUNELLE MARTIN

PIERCE MOORE

MARCUS MORRIS



ANN MURPHY

ORMAN FLINT NOBLES



TRACY O'NEAL

ROSEMON PEPPER



LUCILE RUPPERSBURG

VIRGINIA SCOTT



GEORGE SHELL

ADNA STEWART



GABRIEL THOMAS



JACK TIPTON

JUNE VAN SICKLE



EVELYN WINFREE

CARL J. WOOLF



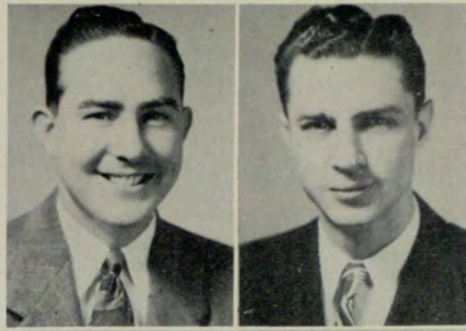
# PRE-JUNIORS



## OFFICERS

BILL BAXTER . . . . . *President*  
MARGARET SLOCUM . . . . . *Vice President*  
KAY LAY . . . . . *Secretary*  
EVELYN HYDE . . . . . *Treasurer*

BILL BAXTER  
 JACK T. BECKHAM  
 CLYDE T. BOWEN  
 TONY W. BRYANT  
 HOWARD CLARK  
 FRANK T. DAVIES

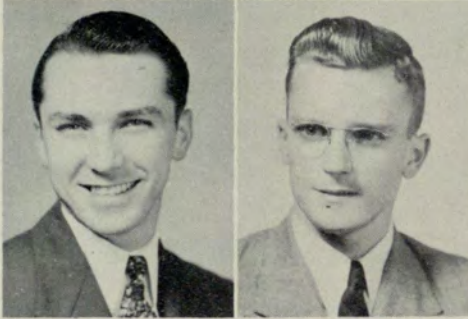
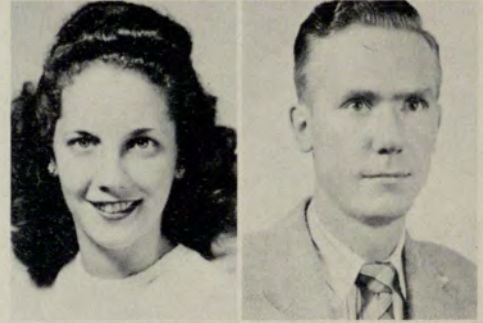


FRANK H. DeCHRISTINA  
 JO ANN FOSSETT  
 ALFRED FRANKLIN  
 JABEZ GALT  
 CAROLYN HAYES  
 JOHN M. HOLDER  
 EVELYN HYDE  
 KAY LAY

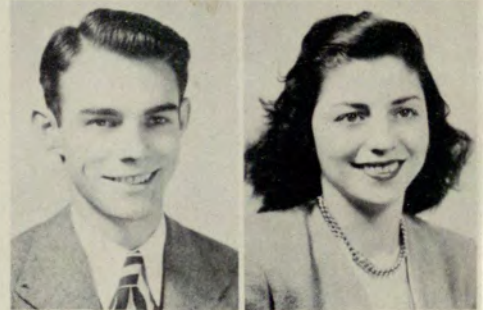




EDWARD S. LINDBERGH  
 KATHERINE LORRAIN  
 ALBERTA LOYD  
 BILL MARR  
 BUCK MINOR  
 THOMAS H. NORMAN



PAT NOWELL  
 DOYLE NUNNELLY  
 PAUL L. OTWELL  
 MARTHA PACE  
 MARY PACE  
 JOHN T. PAPAGEORGE  
 ERNEST W. PEGRAM, JR.  
 MARY PERRYMAN

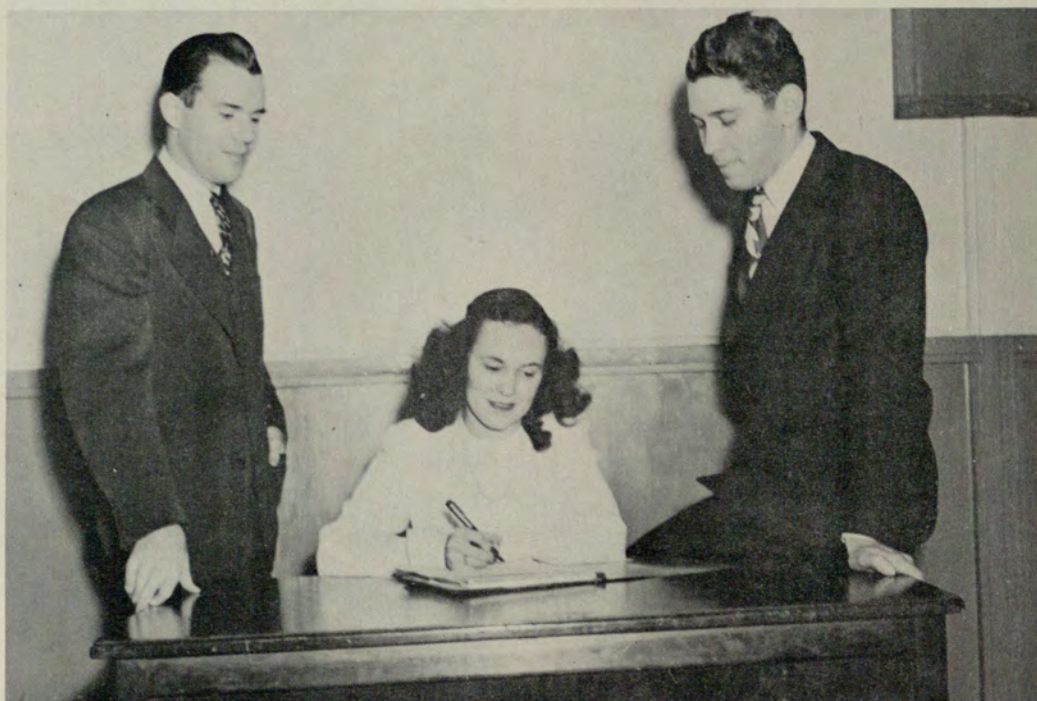


JIMMY PRESLEY  
 WILLIAM E. PUCKETT  
 BILL SACKS  
 LAWRENCE D. SAGGUS  
 TONI SAWYER  
 HUGH SCHUTTE



MARGARET SLOCUM  
 ROBERT W. THOMAS  
 ELDRIDGE H. TURNER  
 DORIS VAN SICKLE  
 LESTER WATSON  
 JOHN A. WILLIAMS  
 BERNICE WREN  
 JOHN C. YOUNG

# SOPHOMORES



## OFFICERS

- JACK MORRIS . . . . . *President*  
JAMES BLISSITT . . . . . *Vice President*  
BETTY MOORE . . . . . *Secretary*  
DICK NEIL . . . . . *Treasurer*



ELOISE ADKINS  
MORGAN ANDERSON

ROBERT ANGLIN  
BETTY ANN BATEMAN

HENRIETTE BARNETT  
BETTY VIRGINIA WEAVER

JACK BELLE ISLE  
ALICE BENATOR

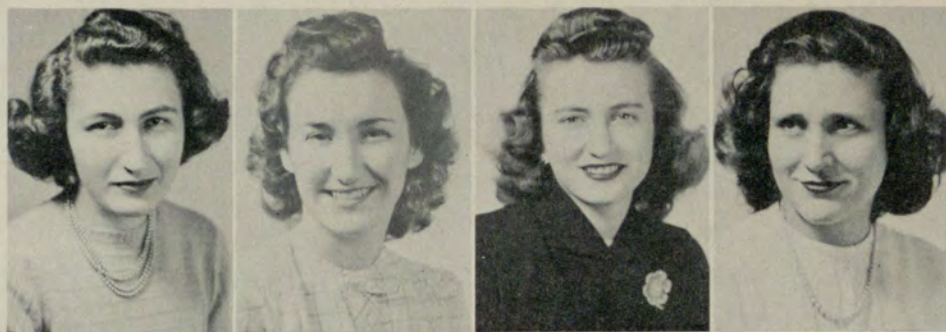
LOUISE BENJAMIN  
LAWRENCE BENTON

CHARLES W. BLACKSTOCK  
JAMES A. BLISSIT

DOT BROOKS  
JOYCE BROWN

GILBERT BRYAN  
RANDALL CARNES





HELEN G. CITRON  
J. MORRIS CLACKLER

MARTHA CLAYTON  
LEE CRAIG

VIVIAN CRAWFORD  
BARBARA DAILEY

BETTY DAILEY  
MARGARET ANNE DAVIS

VICTOR DAVIS  
JACK DUNCAN

MARGARET ENGLAND  
CHARLES B. FARMER

SUSANNA FRANCO  
RUTH GRAVES

GENE GULLY  
GEORGE K. HAMILTON





B. FRED HEDGES, JR.  
LLOYD S. HILL

JULIAN W. HOGAN  
LOUISE HOLLIS

FRANK HUMPHRIES  
JOE JONES

GEORGE KIRKLAND  
GENE KYSER

WILL G. LENOIR  
JOHNNY LOVEJOY

PHILLIP MAFFETT  
ANN MALCOM

JULIA MANSTON  
JUANITA MARTIN

JACK MARBUT  
MARVIN L. MAXEY







KATHRYN MILLER  
BETTY MOORE

CLAUDE E. MORRIS, JR.  
JACK MORRIS

ROBERT J. MORRIS, JR.  
RICHARD NEILL

LELAND O'CALLAGHAN  
R. LOWMAN OGLESBY

EDITH JACQUELIN PARKER  
BARBARA LEE PERRIN

HERSHEL L. PLESS  
ANNE RABUN

GREY REEVES  
BILL RICE

LILLIAN L. RICH  
H. MELVIN RICHARDSON





LINDA ROBERTS  
JEANNETT ROBINSON

BLANCHE SALMOND  
AL SNEDGEN

FRANK M. SPATH  
CAROLYN STONE

M. E. STRINGFELLOW  
CARL B. TANKSLEY

VIRGINIA TAYLOR  
SHIRLEY THOMAS

LOUISE TINSLEY  
THOMAS CLACK TUCKER

FRANK TUGGLE  
LOIS TYROFF

NORWOOD WAYE  
LOUISE CLAIR WILLIAMS

MADGE WILLIAMS  
GORDON YARBROUGH



# FRESHMEN



## OFFICERS

DAVID NELSON . . . . . *President*  
PEGGIE MORRIS . . . . . *Vice President*  
LILL NELSON . . . . . *Secretary*  
BETTY ANN KEMP . . . . . *Treasurer*

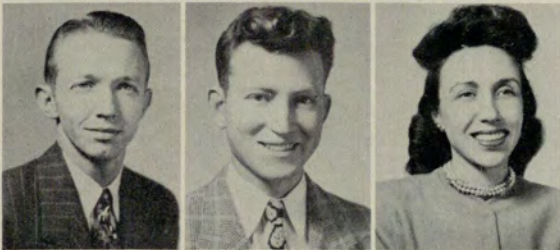
CHARLES M. ADAMS  
 MAVIS ADAMSON  
 LAURA AKINS  
 EVELYN ANDERSON



MARTHA L. ASHBY  
 RUTH SAMMY ASHER  
 JULIAN ATHON  
 JERRI AUSTIN



ELVIE BARWICK  
 EARL S. BEAN  
 MARY BEASLEY



BOB BISHOP  
 BILL BORN  
 DORA BOYD



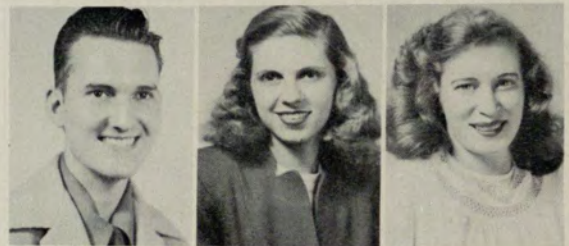
LAWRENCE BOYD  
 MELBA FAY BOYD  
 MARY BRADFORD



H. CLAYTON BREAZEALE  
 BETTY BRILEY  
 CAROLYN BROWN  
 MARY W. BURKS

FRANCES P. BUTTOLPH  
 TED BYERS  
 HELEN CALDWELL  
 LURLINE CARLISLE

HAROLD P. CARMICAL  
 MARY CAPOSELLO  
 VIRGINIA CAWTHON



KATE CHEEK  
 EVELYN CLODFELTER  
 ERNEST VESTA COLE, JR.



MARVIN COLE  
 A. R. COLLINS  
 AL CORLEY



THOMAS E. CRAWFORD  
 LAWRENCE DAILEY  
 MARJORIE DAVIS  
 GEORGE W. DENSON



NELL DOBBS  
 MILDRED SMITH DUNCAN  
 REX EDMONDSON  
 HAZEL EMORY



MARY JOAN ETHERIDGE  
 JAMES R. FARMER, JR.  
 MARY RUTH FITZGERALD



LOUISE FLATLEY  
 DE LORA FOSTER  
 EVELYN FOSTER



MATTIE LOU FRASER  
 DORIS GILLENINE  
 JAMES H. GOLDSMITH



LILLIAN GORDON  
 JOSE FERNANDEZ GRAU  
 JACK GRAVELY  
 HILDA GRIFFETH

HENRIETTA GUNN  
 JAMES F. GUNTER  
 FRANCES L. HARPER  
 W. T. HAYES, JR.

WALTER T. HEIST  
 LORRAINE HOPKINS  
 CARMEN A. HOTTELL

ANNE ITTNER  
 CAROLYN JAMES  
 JANIE T. JHONES

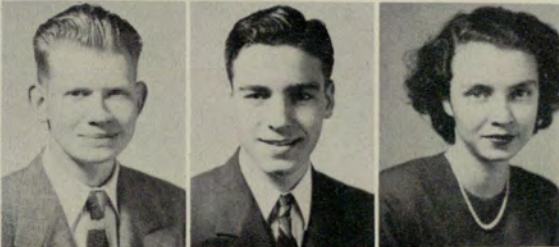
CLYDE D. JOHNSON  
 JAMES HUGH JOHNSTON  
 LILLY M. KELLNER



BETTY ANN KEMP  
 HAROLD O. KNIGHT  
 JOHN WILBURN KNIGHTON  
 BERNARD L. KOBRES



JAMES R. LEE  
 WILLIAM B. LONG  
 BOYD G. LYON  
 PEGGY MAFFETT



JOHN H. MAHL  
 ALVIN RAY MALONEY  
 MARGARET REBECCA MARTIN



MARILYN MARTIN  
 VIRLYN P. MARTIN  
 PAT McCLOSKEY



DOT McCLURE  
 MARIANNA McCOY  
 BEN C. McEWEN





PEGGY McINTYRE  
 MARTHA MILES  
 CAROL ALLEN MINOR  
 JAMES W. MITCHELL

H. B. MONTGOMERY, JR.  
 DORIS ANN MOORE  
 PEGGIE MORRIS  
 KATHLEEN MURPHY

NELL H. MYLIUS  
 DAVID D. NELSON  
 LILLOUISE GREEN NELSON

MILTON F. NENGEL  
 JESSE C. NORMAN, JR.  
 DICK O'BARR

FRANK A. O'NEAL  
 RALPH PAGE  
 SARA FRANCES PAGE



GEORGE W. PARKER, JR.  
 RICHARD C. PIERCE  
 AL PITMAN  
 BOB PITMAN



LOUISE PITTARD  
 MINNIE LEE PITTMAN  
 G. A. POMROY  
 JOHN C. POSS



JOE D. PRESTON  
 JOHN V. PRILES  
 G. L. PRUITT



ALICE C. REDWINE  
 GLORIA REID  
 WALLACE S. RILEY



BILL ROBINS  
 MRS. ROBERT F. ROESER  
 PEGGIE ROGERS

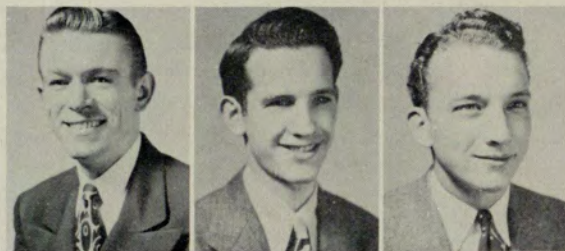


ROBERT F. ROSS  
SAM C. SANDERS  
DOROTHY SAWYER



MARGARET SILVA  
AL SIMMONS  
BENNIE SMITH

ROBERT N. SMITH  
BERNARD SPECTOR  
DONALD B. STEWART



TOM C. TABOR  
ANNE TANPLY  
LEONARD P. THOMAS



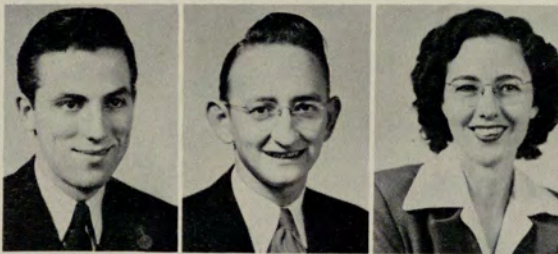
MARTHA THOMPSON  
LELIA S. VANNESON  
KATHERINE WARE



ROY WEBSTER  
GEORGE WHEELER  
VIRGINIA WHITTINGTON



LARRY WILLIAMS  
THOMAS M. WISE  
BETTY WITHERS



ROYCE E. WITHERS  
JAMES L. WOOD  
EVELYN B. WOOLF



JAMES B. WOOTEN  
CARLTON L. YANCEY  
CLARICE YANCEY



MARTHA YORK  
RAYMOND P. YOUNG  
TONY ZACHOS



# SPECIAL

REBA ADAMS  
GRACE ANDERSON  
POLLY ANDERSON

ROBERT V. ARTOLA, M.D.  
MELVIN T. AYCOCK  
FRED E. BELL

LOUISE BENNETT  
MILDRED BERRY  
HUGH D. BISHOP

JOHN A. BRETZ  
RALPH CHAPMAN  
KITTY COFER

CHARLES CUDD, JR.  
RACHEL DIXON  
LARRY EVANS

HARRIETT GASKILL  
MARIE HARRIS  
CARLTON JENSEN



# STUDENTS

BERNICE JENSEN  
LOUISE JOHNSON  
JAMES C. JONES

ROBERT N. KUETTNER  
CLARA MANER  
GEORGE P. MASSEY

J. ADAIR McCORD  
WILLIAM L. McDONALD  
N. WEBSTER NEWBANKS, JR.

RALPH J. O'NEAL



RALPH J. O'NEAL

JULIA PARIS  
WILLIAM H. PITTS, JR.  
ROBERT F. ROESER

EDNA ROWLAND  
KATHRYN RUTLEDGE  
LOUISE SINIARD

EDWIN WILLARD STEELE  
RUBY WILKINS  
TROY WOODALL

# 13th ANNUAL HOMECOMING BANQUET



BLANCHE SALMOND  
Winner of Annual Name Contest;  
Ann Johnson and Donald Higgins,  
runnersup.



Banquet committee blushing over "Smut Sheet"



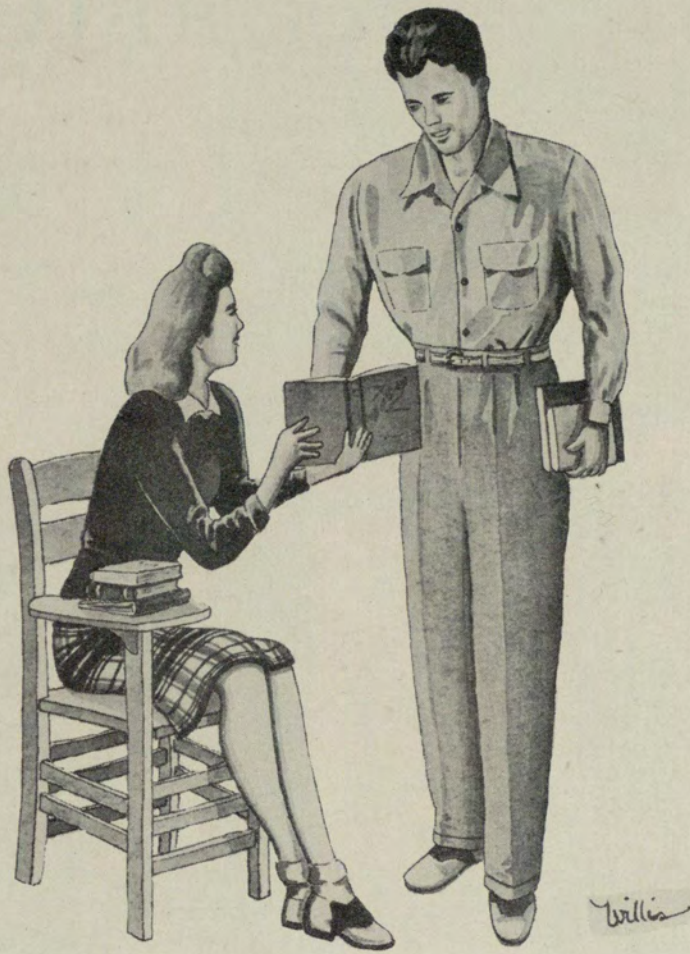
Intermission Jam-session



Those after-dinner speeches



"Let's Dance."



... *"Fame is the thirst of youth"*

# SOPHOMORE CLASS OFFICERS



ANN JOHNSON



JESSE BURKS



AL PENNINGTON

ANN JOHNSON . . . . . *President*  
JESSE BURKS . . . . . *Vice President*  
AL PENNINGTON . . . . . *Secretary-Treasurer*



**BILL M. BAILEY**  
 President Student Body, '46-'47; President Student Council, '46-'47; Debate Club, '45-'47; Phi Sigma Alpha, '45-'47; Superlatives '46-'47.



**LINDA BAILEY**  
 Tri Beta, '46-'47; Masque and Wig, '45-'46.

**LEWIS BALL**  
 Phi Sigma Alpha, '46-'47.



**WILLIAM B. BONE**  
 Student Council; Interfraternity Council, '46-'47; Phi Sigma Alpha, President '47.



**ROY F. BRANCH**  
 Baptist Student Union.

**M. JEAN BOWERS**  
 Delta Alpha Delta, '47.



**LOUISE BREWER**  
 Sigma Pi Alpha, '46-'47.

**BARBARA ANN BURCH**  
 Delta Alpha Delta, '47.



JESSE ARNOLD BURKS  
Student Council, '46-'47; Sigma Pi Alpha, '46-'47; Phi Sigma Alpha, '45-'47.

ELLEN CARROLL  
Chi Rho Sigma, '45-'47.



KATHERINE "KAY" CARROLL  
Interfraternity Council, '46-'47; Assistant Lay-out Editor Rampway, '46-'47; Wesley Foundation '45-'46; Delta Alpha Delta, '45-'46, President, '46-'47; Ga. Tech Band Sponsor, '46-'47; Sweetheart of Phi Sigma Alpha, '46-'47.

WILLIAM CARR  
University Signal, '46-'47.

JOEL W. CHANDLER

LYLE C. CLARK



ROBERT B. CLIFFORD  
Phi Sigma Alpha, '45-'47.

BOBBIE COHN  
Chi Rho Sigma, '45-'47, Vice President, '46-'47.



MILDRED DANIEL  
Baptist Student Union; Chi Rho  
Sigma, '46-'47.



ROBERT DAVIE  
Phi Sigma Alpha, '45-'47.

PEGGY DUERST

THELMA FIELD  
Delta Alpha Delta, '45-'46; Masque and  
Wig, '45-'46; Dramatic Club, '46-'47.



RUTH GASKIN  
Chi Rho Sigma, '45-'47; Superlatve '46-  
'47; Masque and Wig, '45-'46.

GEORGE GLEESON  
Baptist Student Union; Phi Sigma Al-  
pha, '45-'47.



MARY GREEN  
Sigma Pi Alpha.

NORMA J. HAASL



LILLOUISE HATCHELL

BOB HAZELRIG  
Superlative, '46-'47.



MARY EVELYN HENDERSON  
Delta Alpha Delta, '46-'47.

ROBERT LEE HENSON

JEAN HESS

Chi Rho Sigma, '46-'47; Bit and Bridle  
Club, President, '46-'47.

MARY ELLEN HOSCH

Tri Beta, Secretary '46-'47.



JEAN HOVIS

Student Council, '45-'46; Baptist Stu-  
dent Union, '45-'46; Masque and Wig,  
'45-'46; Delta Alpha Delta, '45-'47;  
Superlative '46-'47.

IRIS HOWELL

Home Economics Club, '45-'46; Delta  
Alpha Delta, '45-'47.



**EARLE R. HUGHEY**  
Flambo, '46-'47; Masonic Society,  
'46-'47.

**ROBERT R. HUMPHREYS**  
University Signal, '45-'47.

**ANN JOHNSON**  
Student Council, '45-'47; Sophomore  
Class Pres., '46-'47; University Signal,  
'46-'47; Interfraternity Council, Vice  
Pres., '46-'47; Rampway, '46-'47; Chi  
Rho Sigma, '45-'47, Pres., '46-'47; Cheer  
Leader, '46-'47; Athletic Association  
Secretary, '46-'47; Superlatives '46-'47.

**EVELYN JONES**  
Home Economics Club, '45-'46; Delta  
Alpha Delta, '45-'47.



**MARY KELLEY**  
**JOHN W. KENNEDY**



**JUNE H. KIRKLAND**  
Flambo, '46-'47.

**LaFAYE LEAKE**  
Student Council, '45-'46; Student Offi-  
cer, '45-'47; Sigma Pi Alpha, '45-'47;  
Masque and Wig, '45-'46; Delta Alpha  
Delta, '45-'47, Secretary '46-'47; Super-  
latives, '45-'47.



BEVERLY LEAK  
Chi Rho Sigma, '46-'47.

DOT LEMON  
Interfraternity Council, '46-'47; Baptist  
Student Union; Tri Beta, '45-'47, Pres-  
ident, '46-'47.



SARAH ELLEN LEVY  
Christian Club, '46-'47; Friendliest Girl,  
'46-'47; Delta Alpha Delta, '45-'47.

ERNEST LUTHER

JO ANN MARTIN  
Glee Club, '45-'47; Baptist Student  
Union, '45-'47; Delta Alpha Delta, '45-  
'47, Chaplain, '46-'47.

VIRGINIA MILLER  
Tri Beta, '46-'47.



JAMES MOLLESON  
Sigma Kappa Chi, '46-'47.

FREDERICK N. MOORE



JO LOUISE MOORE

JIMMY MORRISON



JUNE McDANIEL

International Relations Club; Baptist Student Union, '45-'47; Sigma Pi Alpha, '46-'47; Delta Alpha Delta, '46-'47.

GRACE McGAHEE

Weslyn Foundation, '46-'47; Delta Alpha Delta, '46-'47.



MILDRED McGRAW

International Relations Club, '45-'47; Baptist Student Union, '45-'47; Sigma Pi Alpha, '46-'47.

GEORGE NASH

Interfraternity Council Pres., '46-'47; Phi Sigma Alpha, '45-'47, President, '46-'47.



MALCOLM M. NEEL, JR.  
Sigma Kappa Chi, '46-'47.

BETTY NESBITT  
Sigma Pi Alpha, '46-'47.



JAMES D. ODUM  
Phi Sigma Alpha, '45-'47.

FARRICE OWENS  
Delta Alpha Delta, '46-'47.



JO ANN O'NEAL  
Delta Alpha Delta, '46-'47.

BILL R. PARKER  
Student Council, '46-'47; Interfraternity  
Council, '46-'47; Phi Sigma Alpha,  
'45-'47.

NELL PECK  
Delta Alpha Delta, '45-'47.

AL PENNINGTON  
Student Council, '46-'47; Student Offi-  
cer, '46-'47; Phi Sigma Alpha, '45-'47.



HARRIETT PERRY  
Glee Club, '45-'46; Chi Rho Sigma,  
'45-'47, Secretary, '46-'47.

HERSCHEL L. PLESS  
Phi Sigma Alpha, '45-'47.





MADELINE POSS

SHERIDAN PUTNAM

Student Council, '45-'47; Interfraternity Council, '46-'47; International Relations Club, '45-'47; Masque and Wig, '45-'46; Cheer-Leader, '46-'47; Delta Alpha Delta, '45-'47, President, '46-'47.



BARBARA SCHEELER

Most Studious Girl, '46-'47; Delta Alpha Delta, '46-'47.

DUDLY R. SEGARS, JR.



CAROL SHEATS

Delta Alpha Delta, '45-'47.

RICHARD R. SIMS

Flambo; Phi Sigma Alpha, '43-'47, Treasurer, '46-'47.



BOYD T. SMITH

ELLEN SOAST

Sigma Pi Alpha, '46-'47; Chi Rho Sigma, '45-'47, Treasurer, '46-'47.



**NORMA SOUTHARD**  
Glee Club, '45-'47; Student Council,  
'45-'46; International Relations Club,  
'45-'46; Cheerleader, '46-'47; Delta Al-  
pha Delta, '45-'47, Sgt.-at-Arms, '46-'47.

**ANTOINETTE SOWELL**  
Delta Alpha Delta, '45-'47.



**CHARLENE SPARKS**  
Student Council, '45-'47, Secretary, '46-  
'47; Baptist Student Union, '45-'47;  
Delta Alpha Delta, '45-'47.

**FRANK J. SPARTI**

**EVELYN STEWART**  
Tri Beta, '46-'47.



**BARBARA THOMAS**  
Chi Rho Sigma, '45-'47.



**FRANCES VARNER**

Sigma Pi Alpha, '46-'47; Basketball Team, '46-'47.

**DOT WARLICK**

Glee Club, '46-'47; Baptist Student Union, '46-'47; Delta Alpha Delta, '46-'47.



**BOB WATSON**

University Signal '45-'46; Superlatives, '44-'47.

**BETTY FRANCES WILLIAMS**

Baptist Student Union, '46-'47; Delta Alpha Delta, '46-'47.



**CHARLINE WILLIAMS**

Flambo; Glee Club, '45-'46; International Relations Club, '45-'47; Tri Beta, '45-'47.

**LUCY JO WHITMIRE**

Baptist Student Union, '46-'47; Tri Beta, '46-'47.



**ELBERT W. WOODS**

President Student Body, '45-'46; Student Council, '44-'46, President, '45-'46; Interfraternity Council, '44-'45; Rampway Editor, '46-'47; International Relations Club, '44-'45; Masque and Wig, '44-'45; Glee Club, '46-'47; Phi Sigma Alpha, '44-'47, Secretary, '44-'45, Vice President, '45-'46, Editor Phi Sig "Weakly" '45-'46; Superlatives '44-'47.



PAT RIGGS  
*President*



DONALD BROOME  
*Vice President*



SHIRLEY MALLOY  
*Secretary-Treasurer*

# FRESHMAN OFFICERS

SAM ADAMS

EDA MAE KATHERINE AHRENS

FRANK M. ALFORD



DOT ALLEN

ROBERT ANDERSON

GEORGE E. ANDREWS



PAUL MYRON BAKER

MILTON BAME

LEE NEAL BARNETT



NANCY MARIE BASS

BERTHA "BUFFIE" BENNING

LOUISE BENNING



MARGARET BENNING

HORACE B. BIBB, JR.

BETTY ANN BISHOP



DON BORN  
 EDWARD S. BOWEN  
 VIRGINIA BRADLEY

MRS. BURNIE PERRY BRANNON  
 DONALD BROOME  
 DOLORES QUEBE BROOKS

KATHERYN BRADLEY  
 JUNE BRINKLEY  
 MARY LOUISE BROCK



HARLEY N. BROWN, JR.  
 MARVIN M. BURELL  
 FRANKIE BURNS



JEAN BYERS  
 BETTY CALLAWAY  
 PAUL T. CARROLL, JR.



ROBERT E. CARROLL

MILDRED CHEEK

ELIZABETH CLARK



EUGENIA "JENX" CLARKE

JOHN E. CLAYTON

LAMAR COCHRAN



PERRY COKER

AUSTIN C. CRAWFORD

MARCIA CUNKLE



HUGO M. DAVIS, JR.

BENJAMIN H. DEHAY

BETHEL DELOCIS



HILDA LA RUE DOSTER

JOAN DUNHAM

EUGENE ELBSON



BRUCE E. ELLARS, JR.

DOTTY ENNIS

DOLORES ETHERIDGE

JERRY B. ETHERIDGE

MARGARET A. EVERETT

CHRISTINE WINSLOW FLAKE

CECIL PARK FLOYD, JR.

JOHN FRANKLIN

H. B. FULLER

CHARLES GIBSON

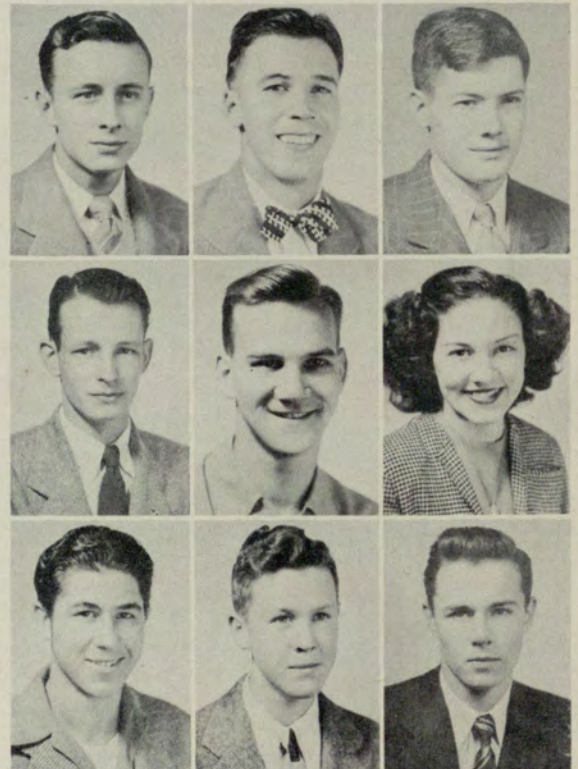
DAVID M. GILLON

ELOISE GODBY

JOHN GODBY

FRED WM. GRAF, JR.

JOHN F. GRAVES





MYRTLE GROSS  
MILDRED GRUBB  
BARBARA GWIN



JOSEPH M. HALE  
BEVERLY JANE HICKS  
DONALD P. HIGGENS



BILLY HODGENS  
JEANNE HOLCOMBE  
CHARLOTTE HOLDEN

CAROLYN ISABELLE HUDGINS  
EDITH HUIET  
SELENE HUNT

WILLIAM F. JACK, JR.  
C. VIRLYN JOHNSON  
ANN "TINY" JONES

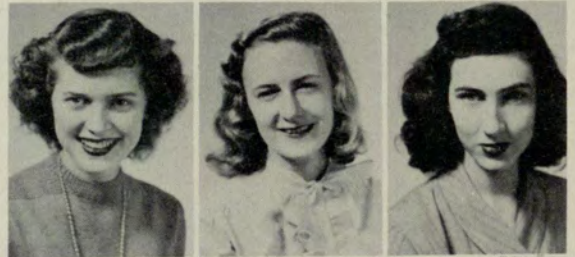


MIRIAM LAMSON  
JEANNINE LANFORD  
MAMIE LEWIS



OMER JOE LOOPER  
ANNE LOVVORN  
SHIRLEY NELDA MALLOY

RUTH MARLING  
FRANCES MAYFIELD  
SHIRLEY MERCHANT



"PAT" MOON  
SARA MOORE  
SARA JEAN MITCHELL



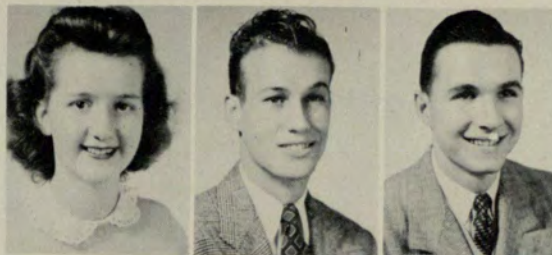
HARRIETT MORROW  
FRANCES MURPHY  
JOHN McDONALD



MARY JO McKENNEY

WILEY McGARITY

WILLIAM A. NIX



BETTY NUNNALLY

BABY JEWEL OAKES

BILL OLIVER



ROBERT L. PAINE, JR.

PLEDGER "BUCK" PHILPOT

ROBERT L. PORTER



HARRIET POWELL

WILLIAM W. POWERS

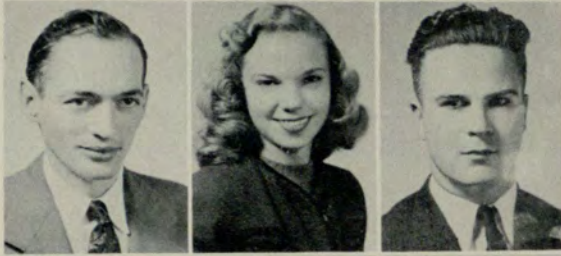
BARBARA H. PRUITT



JOHN QUEEN

VIVIAN REAGIN

GWEN RICE



PAT RIGGS  
 PAT SCHRINER  
 ROBERT E. SHARPTON



RAY D. SOSEBEE  
 RUTH SPRAGGINS  
 JOHNNIE LOU STEPHENS

DONALD W. STILL  
 JEANNE STOKES  
 WILLIAM STORY  
 DORIS STROTHER



CLARENCE H. THOMAS  
 WAYNE THOMPSON  
 WENDALL W. TROY  
 BEN L. TUCKER



RICHARD D. TURNER, JR.  
 CONNIE UPCHURCH  
 CHARLIE H. VAUGHN, JR.  
 WILLIS VanFRANK



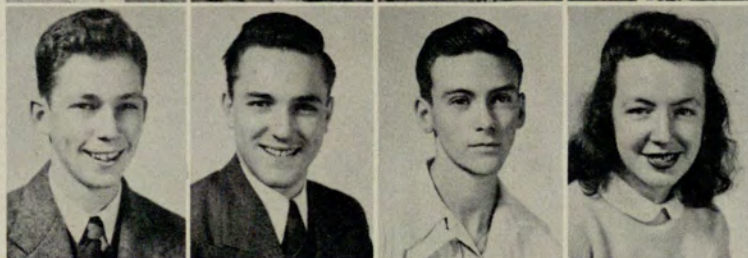
SCOTT WALTERS, JR.  
 GEORGE G. WARD, JR.  
 WILLIAM A. WATERS, JR.



ED WATKINS  
 CARL WELDEN  
 BETTY WHITE



BETTY WILFORD  
 GEORGE H. WHITING  
 WILLIAM W. WILLIS, JR.  
 JAMES SCOTT WILSON



GENE WOOD  
 JIMMY WOODWARD  
 WADE WOODWARD, III  
 BARBARA WRIGHT



NILES WYATT  
 KYLE YANCEY  
 ROBERT EARL YARBROUGH, JR.  
 ANITA ZIMMER



# SNAPS



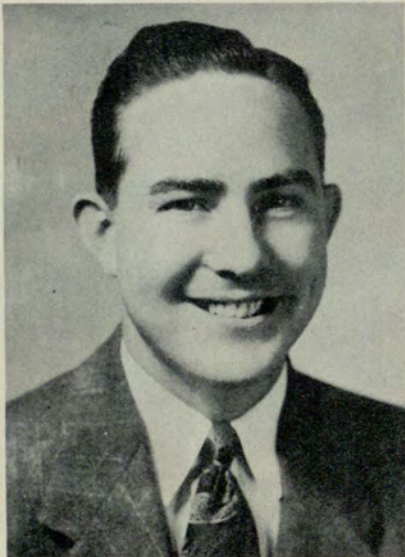


... "Pursue worthy aims"

# EVENING DIVISION STUDENT COUNCIL



**BILL BAXTER**  
*Chairman*  
 13TH ANNUAL  
 HOMECOMING  
 BANQUET



## OFFICERS

HIRAM HONEA . . . . .	<i>President</i>
AL KUETTNER . . . . .	<i>Vice President</i>
PEGGIE MORRIS . . . . .	<i>Secretary</i>
JACK MORRIS . . . . .	<i>Treasurer</i>

It's MEMBERS... The presidents and vice presidents of Freshman, Sophomore, Pre Junior, Junior, and Senior Classes; one representative from each six o'clock class; editors of school publications; President of Inter-fraternity Council.

It's AIMS... To meet regularly for the discussion of all student affairs; to act in the interest of all students on matters concerning their welfare; to serve as the liaison between students and the school administration; to sponsor the annual Homecoming Banquet; to supervise with a watchful eye the various college publications and general activities.





Eloise Adkins  
 Jimmy Blissett  
 Alfred Franklin  
 Harold Jackson  
 Bill Marr  
 David Nelson  
 Blanche Salmond  
 Katherine Ware

Bill Baxter  
 Bill Burke  
 Wanda Hamby  
 Emory Johnston  
 Verlyne Martin  
 Elsa O'Callaghan  
 Louise Siniard  
 George Wheeler

Earl Bean  
 Lurline Carlisle  
 Ruby Harrelson  
 Jimmy Jones  
 Kathryn Miller  
 Leland O'Callaghan  
 Margaret Sloucm  
 Cecil Williams

Mildred Berry  
 Luke Darnell  
 Neil Hopkins  
 Al Kuettner  
 Roger Lorrain  
 Buck Minor  
 Tracy O'Neal  
 Don Stewart  
 E. W. Woods

Ben Binford  
 Mildred Duncan  
 Ed Howell  
 Roger Lorrain  
 Marcus Morris  
 G. A. Pomroy  
 Bill Thomas  
 Carlton Yancey

Bob Bishop  
 Jimmie Edwards  
 Evelyn Hyde  
 Boyd Lyon  
 Richard Neil  
 G. L. Pruitt  
 Eldridge Turner  
 Martha York

# STUDENT COUNCIL



# DAY DIVISION

BILL BAILEY  
*President*



SHERIDAN PUTMAN   CHARLENE SPARKS   LA FAYE LEAKE  
*Vice President   Secretary   Treasurer*



ANN JOHNSON   JESSE BURKS   AL PENNINGTON



PAT RIGGS   DONALD BROOME   SHIRLEY MALLOY   GEORGE NASH

# SNAPS



# THE RAMPWAY 1947



BILL MARR  
*Editor-in-Chief*



"JOE" WOODS  
*Associate Editor*



MARR, WOODS, MAFFETT AND SLOCUM AT WORK

BILL BURKE  
*Business Manager*



BILL WILLIS  
*Art Editor*



MARGARET SLOCUM  
*Staff Consultant*



PEGGY MAFFETT  
*Layout Editor*



KAY CARROLL  
*Associate Layout Editor*



JIMMIE EDWARDS  
*Research and Composition*

The task of producing THE 1947 RAMPWAY has not been an easy one. The consolidation of the Day and Evening Division Annuals greatly increased the work and responsibilities.

In accordance with the theme of this, the first RAMPWAY, we have endeavored to bring all the aspects of the College into one memorable picture. Our task completed, we hope you will like it.

#### STAFF ASSISTANTS

PAUL OTWELL    SHIRLEY THOMAS    BETTY ANN KEMP    MADGE WILLIAMS    ANN JOHNSON



# THE SIGNAL

## THE STAFF:

AL KUETTNER  
*Editor*

HAROLD JACKSON  
*Associate Editor*

BILL ALLEN  
*Business Manager*

PEGGY MAFFETT  
*Associate*

KITTY COFER  
*Society Editor*

TOM NORMAN  
*Sports Editor*

During the 1946-47 school year, the SIGNAL was published twice monthly by a staff that that conscientiously sought to give the students of the University Center adequate coverage of the news of their school. During the year, several projects were launched by the paper and others were boosted in the hope that through the activities of the paper, a better University Center resulted.



AL KUETTNER  
*Editor*



SIGNAL staffers Peggy Maffett, Harold Jackson, Al Kuettner and Shirley Thomas look over the finished product.



HAROLD JACKSON  
*Associate Editor*



KITTY COFER  
*Society Editor*

The University Signal is the bi-monthly publication of the Day and Evening Divisions of the University System Center. Students of the two Divisions write the articles, read the copy, correct proofs, and secure the ads. All this combined makes the Signal a reality.

MYRTA CARPER  
THOMAS NORMAN

REX EDMONDSON  
JOHN POSS

ANN JOHNSON  
ROBERT W. THOMAS

BETTY ANN KEMP  
SHIRLEY THOMAS

PEGGY MAFFETT  
GORDON WARD





KIRKLAND



WILLIAMS



EDMONDSON



THOMPSON

# FLAMBO LITERARY MAGAZINE

## STAFF:

SUSANNE DONALDSON . . . . . *Editor*  
 PHYLLIS LEWIS . . . . . *Art Editor*  
 FRANK TUGGLE . . . . . *Photographer*  
 SHIRLEY THOMAS . . . . . *Exchange Editor*  
 W. J. WHITE . . . . . *Business Manager*

## EDITORIAL STAFF:

Marian Hine, Bobby Powell, Rex Edmondson,  
 Auburn E. Thompson, Wm. V. de la Palme,  
 Bruce Eller.

## BUSINESS STAFF:

Charlene Williams, Marian Hine, June Kirkland,  
 Earl Hughey

## FACULTY ADVISORS

Dr. James E. Routh, Dr. Clark Olney.



DONALDSON



LEWIS

The FLAMBO is the school's literary magazine, representing both the efforts of the Junior College and the Evening College. Published once a quarter, it contains short stories, poems, jokes, essays, true experiences, editorials, and anecdotes written by the students, along with original cartoons and photos.

The FLAMBO was originally organized in 1938 and has since grown to be one of the most popular publications in the University System.



HUGHEY



THOMAS



HINE



TUGGLE





GEORGE NASH  
*President*



ANN JOHNSON  
*Vice President*

DAY  
DIVISION

INTER-FRATERNITY COUNCIL



KATHERINE "KAY" CARROLL



LA FAYE LEAKE



DOT LEMON



SHIRLEY MERCHANT



SHERIDAN PUTMAN



EVELYN STEWART



ED WATKINS



GORDON WARD

# INTER-FRATERNITY COUNCIL EVENING DIVISION



EVELYN HYDE  
*President*



JIMMY McNABB  
*Vice President*



VIRGINIA DARNELL  
*Secretary-Treasurer*

The representatives of the seven member organizations of Inter-fraternity Council meet bi-monthly and seek close harmony between sororities, fraternities and other groups in the school.

The Council grants meeting and social dates and controls pledging activities of organizations.

## REPRESENTATIVES:

### ALPHA KAPPA PSI

Luke Darnell  
Tracy O'Neal

### DELTA LAMBDA SIGMA

Eloise Adkins  
Alberta Loyd

### DELTA SIGMA PI

Ben Binford  
Al Snedgen

### KAPPA THETA

Katherine Lorrain  
Shirley Thomas

### PHI CHI THETA

Margaret Slocum  
Lonette Gregory

### SPUR CLUB

Verona Killingsworth  
Don Stewart

### STUDENT COUNCIL

Hiram Honea

### VENETIAN SOCIETY

Marcus Morris  
Jimmie Edwards



ELOISE ADKINS

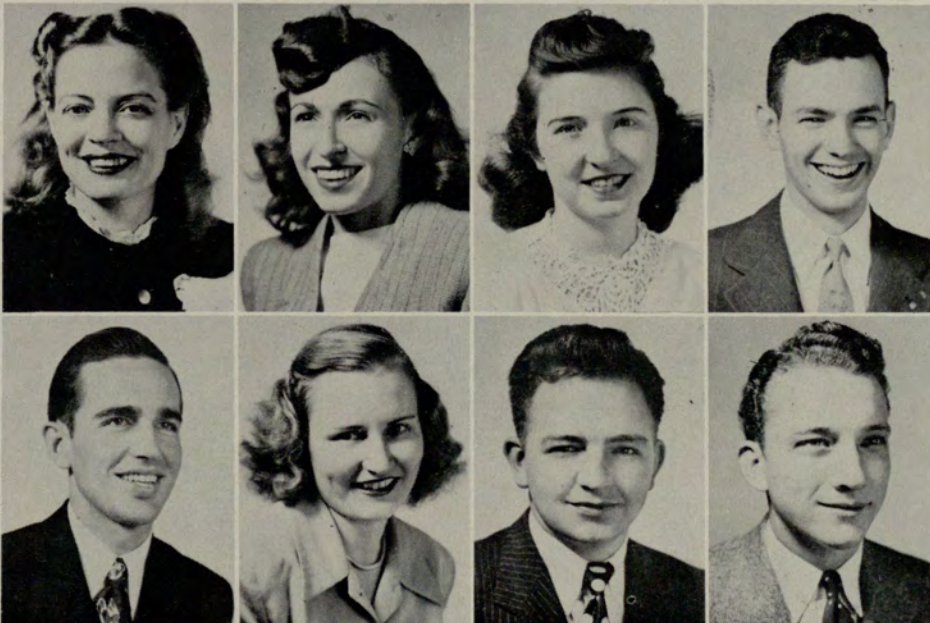
BEN BINFORD

LUKE DARNELL

JIMMIE EDWARDS

LONETTE GREGORY

HIRAM HONEA



VERONA KILLINSWORTH

KATHERINE LORRAIN

ALBERTA LOYD

MARCUS MORRIS

TRACY O'NEAL

MARGARET SLOCUM

AL SNEDGEN

DON STEWART

# SNAPS





*willis*

... "And better friends I'll not be knowing"

# ALPHA KAPPA

# PSI FRATERNITY



Above... President Bill Thomas (left), congratulates past-President Harold Jackson on award to fraternity of national Efficiency Contest; right: scene at informal party, Alpha Kappa Psi Country Club; opposite page: summer house party scene on Lake Burton. Informal pictures by Frank Tuggle, member.



**OFFICERS:**

- BILL THOMAS . . . . . *President*
- TRACY O'NEAL . . . . . *Vice President*
- ANDY FRANKLIN . . . . . *Secretary*
- JOHN THOMAS . . . . . *Treasurer*
- HAROLD JACKSON . . . . . *Master of Rituals*

- Charles F. Kent
- W. Jan Keller
- Marvin L. Maxey
- Pierce Moore
- Thomas Norman
- Tracy O'Neal
- Cecil A. Pool
- Joe Preston
- Hugh Schutte
- Henry W. Sharp
- Bill Thomas
- Gabriel L. Thomas
- E. Frank Tuggle
- Lester Watson
- Cecil P. Williams
- John C. Young



- Jack Belle Isle
- Lawrence Benton
- Bob Bishop
- James A. Blissit
- Gilbert Bryan
- Randall Carnes, Jr.
- J. Wilson Cash
- John A. Cason
- Al Corley
- Luke J. Darnell
- Donald Floyd
- Alfred Franklin
- Samuel Franklin
- Jabez Gault
- Robert J. Head
- Harold F. Jackson
- Courtney Jamison
- Al Kuettner



BETA  
BETA  
BETA



FRANCES TURNER  
*Sponsor*

OFFICERS

DOT LEMON  
*President*

EVELYN STEWART  
*Vice President*



VIRGINIA MILLER  
*Secretary-Treasurer*

JO WHITMIRE  
*Scribe*

MADELINE POSS  
*Sergeant-at-Arms*



LINDA BAILEY

BETTY BISHOP

CONNIE UPCHURCH

MARY ELLEN HOSCH

CHARLINE WILLIAMS





# CHI RO SIGMA

BOBBIE COHN  
*Vice President*



ANN JOHNSON  
*President*

HARRIETT PERRY  
*Secretary*



ELLEN SOAST  
*Treasurer*



DOT ALLEN



FRANKIE BURNS



JEAN BYERS

MARTHA CUNKLE

MILDRED DANIEL

DOTTY ENNIS

RUTH GASKIN

JEAN HESS

CAROLYN HUDGINS

ANN JONES



BEVERLY LEAK



SHIRLEY MERCHANT





KAY CARROLL  
*President*



SHERIDAN PUTMAN  
*Vice President*



LaFAYE LEAKE  
*Secretary*



SARA ELLEN LEVY  
*Pledge Captain*



NORMA SOUTHARD  
*Sergeant-at-Arms*

# DELTA ALPHA DELTA

*Not Pictured*

Betty Anne Boone, Treasurer  
Peggy Eberhart, Scribe



JO ANN MARTIN  
*Chaplain*

*Not Pictured*

Mary Anne Foster, 2d V. Pres.  
Mergie Hoffman



Eda Mae Aherns



Nancy Bass



Bertha Benning



Louise Benning



Margaret Benning



Jean Bowers



Katherine Bradley



Virginia Bradley



June Brinkley



Quebe Brooks



Barbara Ayn Burch



Betty Callaway



Mildred Check



Eugenia Clarke



Joan Dunham

# DELTA ALPHA DELTA



Top Row (left to right): Christine Flake, Myrtle Gross, Barbara Gwin, Mary Evelyn Henderson, Beverly Hicks, Marian Hine. 2d row: Iris Howell, Jeanne Holcombe, Charlotte Holden, Jean Hovis, Selene Hunt, Evelyn Jones. 3d row: Miriam Lamson, Mannie Lewis, Ann Lovvorn, June' McDaniel, Grace McGahee, Frances Mayfield. 4th row: Shirley Malloy, Betty Nunnally, Jo Ann O'Neal, Farrice Owens, Nell Peck, Vivian Reagin. 5th row: Gwen Rice, Barbara Scheeler, Pat Schriener, Carole Sheats, Antoinette Sowell, Charlene Sparks. 6th row: Johnnie Lou Stephens, Doris Strother, Dot Warlick, Betty White, Betty Williams, Barbara Wright

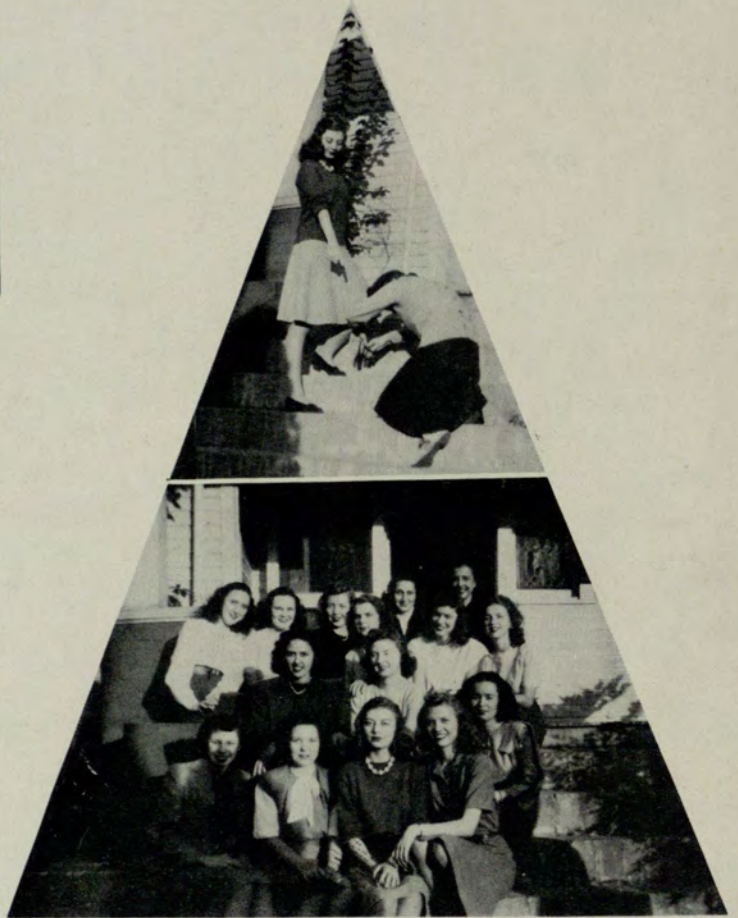
# DELTA LAMBDA SIGMA

*PURPOSE . . .*

. . . for the development of the nobler qualities of the mind, and the attainment of individual and social excellence among its members.



ELOISE ADKINS  
*President*



ALBERTA LOYD  
*Vice President*



ANNE FOSTER  
*Corresponding  
Secretary*



VIVIAN CRAWFORD  
*Recording  
Secretary*



LINDA ROBERTS  
*Treasurer*



BETTY MOORE  
*Assistant  
Treasurer*



RUTH ASHER  
*Sergeant-at-Arms*



Betty  
Beavers



Dorothy McClure  
Belle Isle



Mickie  
Bloodworth



Joyce  
Brown



Lurline  
Carlisle  
Ruby  
Harrelson



Evelyn Crawford  
Cochran  
Rounell  
Martin



Betty  
Cooper  
Martha Leona  
McMichael



Virginia  
Darnell  
Louise  
Sinard



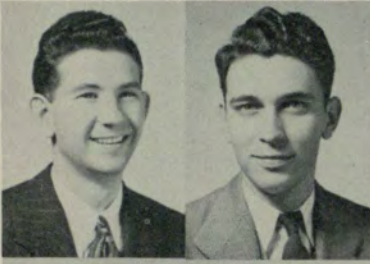
Vivian  
Eaves  
Carolyn  
Stone



Mary Joan  
Etheridge  
Louise  
Whitmire



# DELTA SIGMA PI



BEN BINFORD  
*Senior Warden*

JACK MORRIS  
*Junior Warden*

FRANK HUMPHRIES  
*Scribe*

MORGAN ANDERSON  
*Treasurer*



JIM McNABB  
*Headmaster*



RALPH PAGE  
*Master of Ceremonies*

AL SNEDGEN  
*Master of Festivities*

ERNEST PEGRAM  
*Historian*

FORD RIVES  
*Chancellor*

## KAPPA CHAPTER



"DELTA SIG' LODGE"



"FOUNDERS DAY BANQUET"



"FRESHMAN CAKE RACE"

... to  
foster the  
study of business  
in universities; to encour-  
age scholarship and the asso-  
ciation of students for their mutual  
advancement by research and practice ...



Julian Athon  
 Bill Burke  
 Frank Davies  
 Larry Evans  
 Jack McNeil  
 David Nelson  
 Lawrence Saggus  
 Joe Woods

Bill Baxter  
 Ted Byers  
 Sam Denmark  
 Hiram Honea  
 Phillip Maffett  
 Dick Neill  
 L. C. Sanders

Jack Beckham  
 Ralph Chapman  
 Frank Di Cristina  
 Neil Hopkins  
 John Mahl  
 Leland O'Callaghan  
 George Shell

Bill Born  
 Howard Clark  
 Pat Dobbins  
 Ed Howell  
 Bill Marr  
 Ted O'Callaghan  
 Leonard Slaughter

Don Bosshardt  
 Marvin Cole  
 Jack Duncan  
 Emory Johnston  
 Buck Minor  
 Lowman Oglesby  
 Buster Stewart

Fred Branan  
 M. L. Conner  
 John Eaves  
 John Lovejoy  
 Marcus Morris  
 Grey Reeves  
 Don Stewart

Harold Bryan  
 John Crumbly  
 Jimmie Edwards  
 Boyd Lyon  
 Bob Morris  
 Bill Rice  
 McCoy White  
 Gordon Yarbrough



# KAPPA



# THETA

The Kappa Theta Sorority was founded January 24, 1937, by Mrs. Nell H. Trotter, who, realizing the need for another social organization for women, banded together a small group of girls and formed the sorority which is now in its tenth year.



EVELYN HYDE  
*President*

### CREED

Let us aim as a sisterhood and as individuals to strengthen social ideals in their highest levels, secure the fullest in understanding, and enjoy the finest in fellowship.



MARGARET SLOCUM  
*1st Vice President*



BETTY BRILEY  
*2nd Vice President*



BARBARA DAILEY  
*Treasurer*



KAY LAY  
*Corresponding Secretary*



KATHRYN MILLER  
*Recording Secretary*





Jewel  
Abt  
Betty  
Dailey  
Sara  
Gregory  
Peggy  
Maffett

Evelyn  
Anderson  
Margaret Ann  
Davis  
Carolyn  
Hayes  
Peggie  
Morris  
Shirley  
Thomas

Louise  
Benjamin  
Mildred  
Duncan  
Ann  
Ittner  
Lill  
Nelson  
Lee  
Vannerson

Mary  
Caposella  
Doris  
Gillentine  
Betty Anne  
Kemp  
Rosemon  
Pepper  
Madge  
Williams

Kitty  
Cofer  
Lonette  
Gregory  
Katherine  
Lorrain  
Louise  
Pittard

# PHI CHI THETA



LONETTE GREGORY

## OFFICERS:

- LONETTE GREGORY . . . . . *President*
- CAROLYN HAYES . . . . . *Vice President*
- HEBB EASTERLING . . . . . *Treasurer*
- EVELYNE COCHRAN . . . . . *Corresponding Secretary*
- LOUISE WHITMIRE . . . . . *Recording Secretary*
- MICKIE BLOODWORTH . . . . . *National Counselor*



CAROLYN HAYES



HEBB EASTERLING



EVELYN COCHRAN



LOUISE WHITMIRE



MICKIE BLOODWORTH

## OUR PURPOSE:

To promote the cause of higher business education and training for all women, to foster high ideals for women in business careers, and to encourage fraternity and cooperation among women preparing for such careers.





Joyce Brown    Barbara Dailey    Virginia Darnell    Doris Gillentine    Ruby Harrellson

Evelyn Hyde    Kay Lay    Katherine Lorrain    Rounelle Martin    Ann Murphy

Martha Pace    Mary Pace    Rosemon Pepper    Margaret Slocum



LUNCHEON AT THE PARADISE ROOM

# PHI SIGMA ALPHA



JAMES ODUM  
*Vice President*



GEORGE NASH  
*President*



ED WATKINS  
*Secretary*



CHARLES GIBSON  
*Treasurer*



GEORGE GLEASON  
*Chaplain*



ROBERT CLIFFORD  
*Scribe*



WAYNE THOMPSON  
*Sergeant-at-Arms*



Bill Bailey  
Lewis Ball

Bill Bone  
Don Born

Jesse Burks  
Bob Davie



KATHERINE CARROLL  
*'Sweetheart of Phi Sig'*

Herschel Pless  
Billy Powers

Bill Parker  
Al Pennington

Dick Sims  
"Joe" Woods



Cecil Floyd  
John Godby  
Billy Hodgins  
John McDonald





ORCHID BALL



# SIGMA KAPPA CHI FRATERNITY ALPHA CHAPTER



PAT RIGGS  
*President*



GORDON WARD  
*Vice President*



PROFESSOR HULSEY  
*Faculty Advisor*



WILLIAM A. NIX  
*Secretary*



JAMES WILSON  
*Treasurer*



*"A Pause for a Pose"*



*"Hey, fellas', we're incorporated."*



DONALD BROOME  
*Sergeant-at-Arms*



BOB THOMAS  
ADVISOR



GEORGE ANDREWS  
*Pledge Master*



Fred Graff  
Jimmy Woodward



Clarence Thomas  
Joseph Hale  
Ray Sosebee



Dorothy Ward  
Charlie Vaughn  
John F. Graves  
Richard Turner



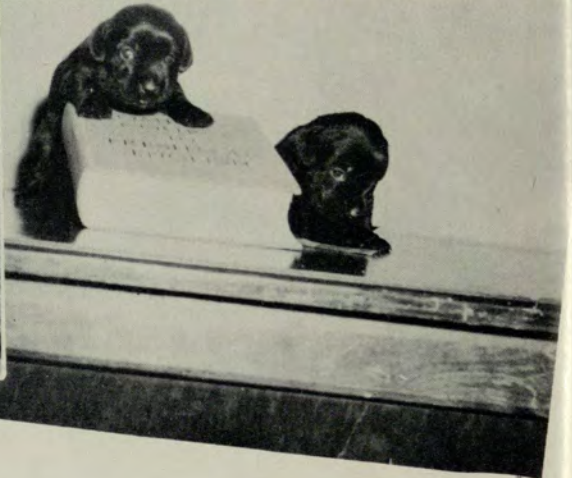
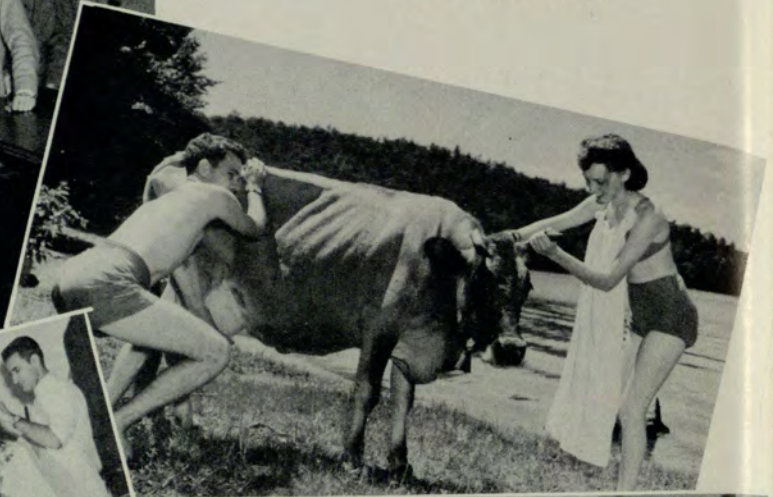
James Molleson  
Gene Wood  
Wendell Troy



Malcolm Neel  
Wiley McGarity



# SNAPS





... "Honor lies in honest toil"

# CRIMSON KEY HONOR SOCIETY



LOUISE WHITMIRE  
*President*

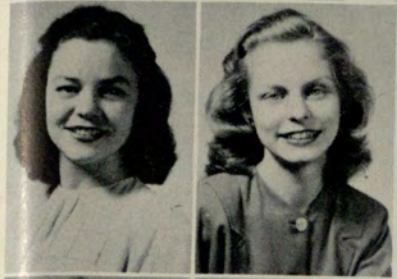
## OFFICERS

- LOUISE WHITMIRE . . . . . *President*  
MILDRED BLOODWORTH . . . . . *Vice President*  
SARA SMITH . . . . . *Secretary*  
ROUNELLE MARTIN . . . . . *Treasurer*

CRIMSON KEY was founded at Georgia Evening College in January, 1934. The purpose of the organization is to promote a closer understanding between Evening College students and the Administration, and to cooperate with the faculty and other organizations in the interest of scholarship, social activities and moral ideals.



# CRIMSON KEY



JEWEL ABT

MILDRED BLOODWORTH



EVELYN C. COCHRAN

KATHRYN COFER



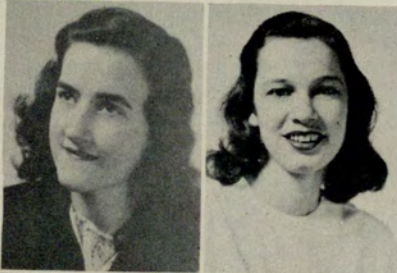
ANNABELLE COX

VIRGINIA DARNELL

LONETTE B. GREGORY

RUBY HARRELSON

KAY LAY  
ROUNELLE MARTIN



MARTHA L. McMICHAEL  
ROSEMAN PEPPER



# DELTA MU DELTA

## OFFICERS

- LONETTE GREGORY . . . . . *President*  
MARY HEETH . . . . . *Vice President*  
PAT M. DOBBINS . . . . . *Secretary*  
ARNOLD D. GREGORY, JR. . . . . *Treasurer*



LONETTE GREGORY  
*President*

## THETA CHAPTER

Since the installation of Theta Chapter, June 9, 1931, Delta Mu Delta has done much to promote a higher standard of scholarship in the Evening College. This fraternity is to promote "higher scholarship in subjects set forth in the curriculum of the Evening College; to stimulate interest in the advancement of scholarly ideals; and to recognize and reward scholastic attainment in the studies as set forth above."

Through the Delta Mu Delta Honor Roll, published annually, the records of students of outstanding scholastic rating are acknowledged.

The election of members, selected from the Graduating Seniors, together with two undergraduates, honors those students who have successfully passed the rigid requirements for this, the only national scholarship fraternity in the Evening College.



PAT DOBBINS  
*Secretary*

# DELTA MU DELTA ROLL

1947

James McNabb  
Harold Jackson

Mary C. Brooks  
Virila Pattillo

Verona Killingsworth  
Frances Kocher

Marion Houston  
Horton Hickerson

1946

Lois Elliott  
Lonette B. Gregory

Mary Heeth

Miriam Jenkins

Hugh Muenz  
Pat Dobbins

1945

Alice Hull  
Lucy Cobb

Eloise Henry

Mildred Stansell

George Herbert

1944

Mary Farmer Cherry  
Johnnie Miller

Georgia Store

Dorothy Strange

Frances Summerlin  
Rachel Whatley

1943

Fred L. Windham

Caroline Reid

Roger Dozier

1942

Edna Cooper  
Claire Manners  
Elizabeth Ramsden

Worth P. O'Dell  
Inez Kitchens  
Lois Dozier

Harold Duncan  
William Bromberg  
Elizabeth Allen

W. R. Hammond  
Jeanne Johnson

1941

Hans H. Butzon  
E. Elwood Wright  
James T. Wiley, Jr.

Miriam J. Clarke  
Edwin M. Clark

Polly Ramsey  
Fideles Kloeckler

Kay Tabor  
Emily Roberts

1940

Jack M. Adams  
Henry T. Smith  
Mary Ford

Agnes B. Barnett  
Kay Alling

John B. Clark  
Irene Strickland

Willathea J. Jackson  
Tilden L. Brooks  
Sidney K. Johnson

1939

Catherine Baker  
James Davis  
James H. McGuire

Timothy Bullard  
H. Talmadge Dobbs  
Ordry Palmer

Maymi W. Chandler  
Pickett Hynes  
H. Mae Tankersley

D. Rebecca Williams  
Harold Willingham

1938

Elizabeth Adams  
Mary Hammond  
M. Christine Wing

E. W. Aldredge  
Robert C. Lowe, Jr.

Albert P. Clark  
Thomas A. Seals

Alice S. Downing  
H. Earl Strying

1937

Marcia Baker  
T. M. McClellan  
R. Durwin White

Clarence H. Hill  
C. Ed Martin

Ewell Y. Jackson  
Ben Overstreet, Jr.

Robert Kimsey  
Helen T. Thompson

1936

E. J. Barber  
Hilda I. Jackson

Tallulah Davis  
Robert Johann

Lloyd C. Ginn  
Susie Sudderth

A. D. Gregory, Jr.  
George Wing

1935

Lamar G. Baker  
Maurice Strickland

Reuben G. Crimm  
Robert Strickland

Elizabeth C. Dexter  
Ted J. Whitehead

Francis M. Osteen

1934

Mildred C. Brown  
George Manners

Francis Duggan  
Antha Mulkey

J. W. Goldsmith  
Robert L. Rivers

M. D. Harper, Jr.

1933

F. C. Brandes  
B. F. Wells, Jr.

N. E. Boswell

Catherine M. Duggan

Howard B. Johnson

1932

T. W. Duncan

Margaret Lloyd

Ruth Rogers

J. Harry Gault

1931

Fae Allen  
R. G. Carlsen  
C. Roy McCormack  
John M. Reed, Jr.  
M. Guy Swanson

W. W. Aycock  
L. C. Evans  
H. C. Kitchens  
H. L. Robinson  
M. W. Swint

E. H. Bishop  
Richard A. Hills  
George E. Parker  
C. S. Spinks  
C. T. Zellner

Mary C. Buchholtz  
John Janoulis  
Norman E. Pettis  
Bernard Suttles, Jr.  
J. W. Zuber, Jr.

# INTRAMURAL KEY

## AIMS OF INTRAMURAL KEY

. . . . A closer understanding and cooperative spirit among students, and between the student body and school administration.

. . . . An aspiration for greater intellectual achievement.

. . . . A study of student problems to the end that all student life may be enriched, and the progress and best interests of the Georgia Evening College be stimulated and promoted.

## OFFICERS



DONALD FLOYD  
*President*



BEN BINFORD, JR.



PAT M. DOBBINS



JABEZ GALT



ROBERT J. HEAD

HIRAM HONEA

HAROLD F. JACKSON

W. JAN KELLER

JAMES H. McNABB

BUCK MINOR

PIERCE MOORE

CECIL A. POOLE

BILL SACS

GABRIEL THOMAS

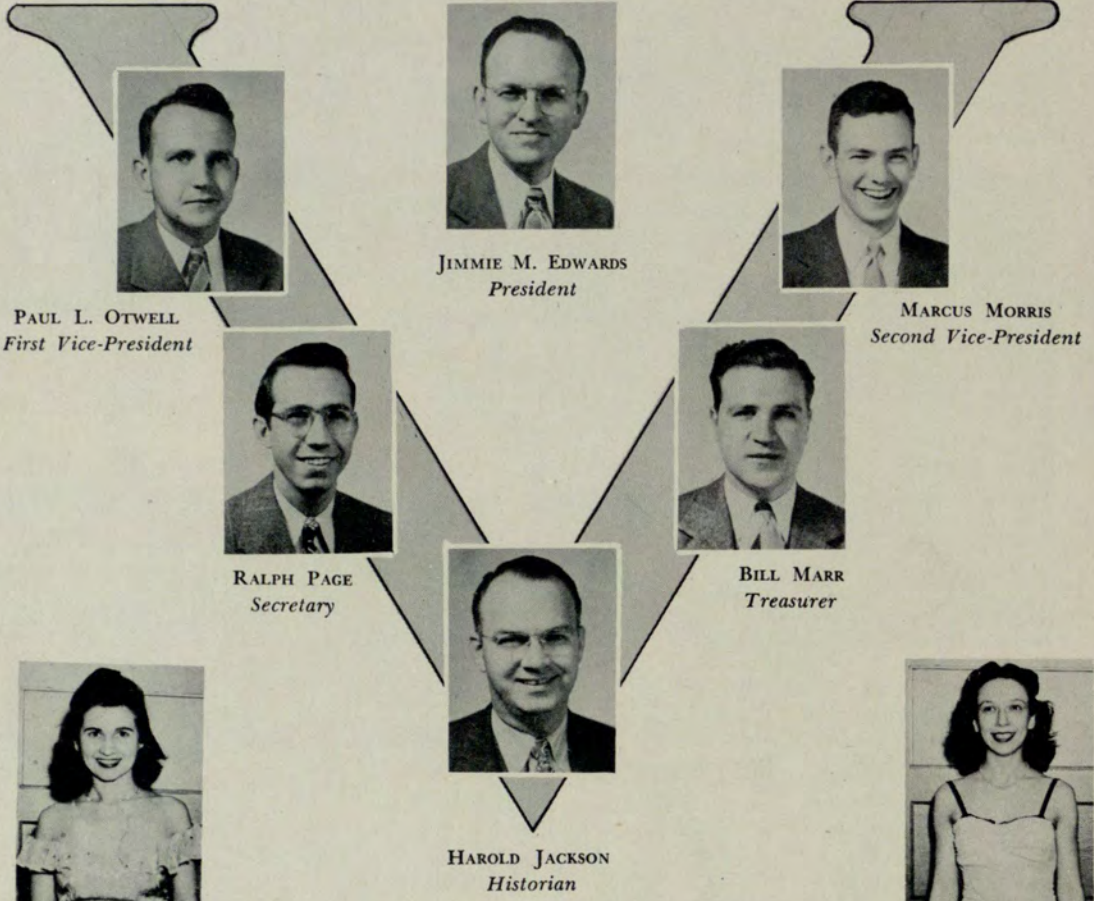
MCCOY WHITE







*"Friendship always benefits"*



PAUL L. OTWELL  
*First Vice-President*

JIMMIE M. EDWARDS  
*President*

MARCUS MORRIS  
*Second Vice-President*

RALPH PAGE  
*Secretary*

BILL MARR  
*Treasurer*

HAROLD JACKSON  
*Historian*

KATHRYN COFER

LILLOISE G. NELSON

**OFFICERS**

- President* . . . . . JIMMIE M. EDWARDS
- First Vice-President* . . . . . PAUL L. OTWELL
- Second Vice-President* . . . . . MARCUS MORRIS
- Secretary* . . . . . RALPH PAGE
- Treasurer* . . . . . BILL MARR
- Historian* . . . . . HAROLD JACKSON

The Venetian Society was organized in 1926 by a group of Georgia Tech evening students. Its sole purpose was to foster in every possible way an unwavering bond of fellowship; to create a better social, educational, and civil relationship, first among its members, second, the student body. Its members endeavor always to better themselves, and to help those with whom they come in contact.

1946-1947 Highlights - August - House party at Lake Burton, Ga. September - host at the first "Get Acquainted" dance in the new college building. October - smoker at Paul Otwell's Mountain Retreat, Roswell, Ga. December - Our Sponsors entertained the Society with a date party at Murray's Lake. February - Rushee date party at the college lodge during Valentine week. March - Initiation and Banquet. April - Buttermilk Ball at Peachtree Gardens.



Jack Belle Isle      Ben Binford      Bob Bishop      James A. Blissit      Bill Burke      Ted Byers      Randal Carnes      Ralph Chapman



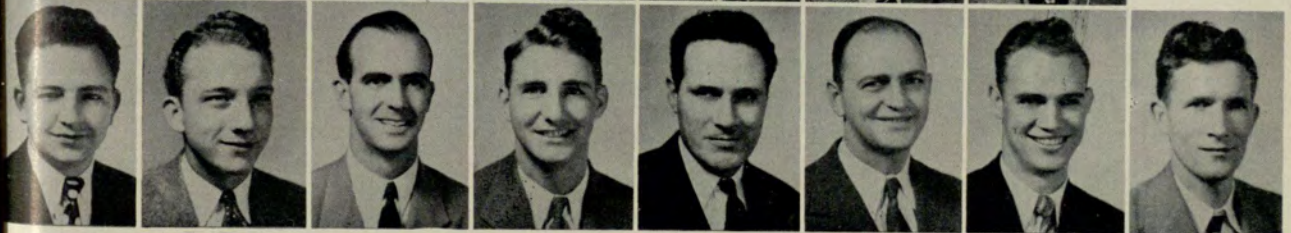
R. A. Christopher      Luke Darnell      Pat Dobbins      Jack Duncan      Sam Franklin      Gene Gully      Frank Humphries



Emory Johnston      Jan Keller



Charles Kent      Al Kuettner      Jimmy McNabb      Jack Morris



David Nelson      Tracy      Ernest W. Pegram, Jr.      Cecil Poole      Joe Preston      Hugh Schutte

Al Suedgen      Don Stewart      Bill Thomas      Thomas C. Tucker      Lester H. Watson      McCoy White      E. W. "Joe" Woods      Gordon Yarbrough

# THE WILLIAM H. MANLEY VETERANS' CLUB

## OFFICERS

*President*

CLIFF CHAPMAN

*1st Vice President*

THEODORE P. O'CALLAGHAN

*2nd Vice President*

HENRY R. DAILEY, JR.

*Secretary*

JAMES McDONALD

*Treasurer*

TOM WELCH

*Chairman, Board of Directors*

ALFRED FRANKLIN

*Member, Board of Directors*

MISS KATE CHEEK

*University System Center Veterans Counselor*

MAJOR CHARLIE MORGAN



THEODORE P. O'CALLAGHAN  
*1st Vice President*



KATE CHEEK  
*Member of Board of Directors*

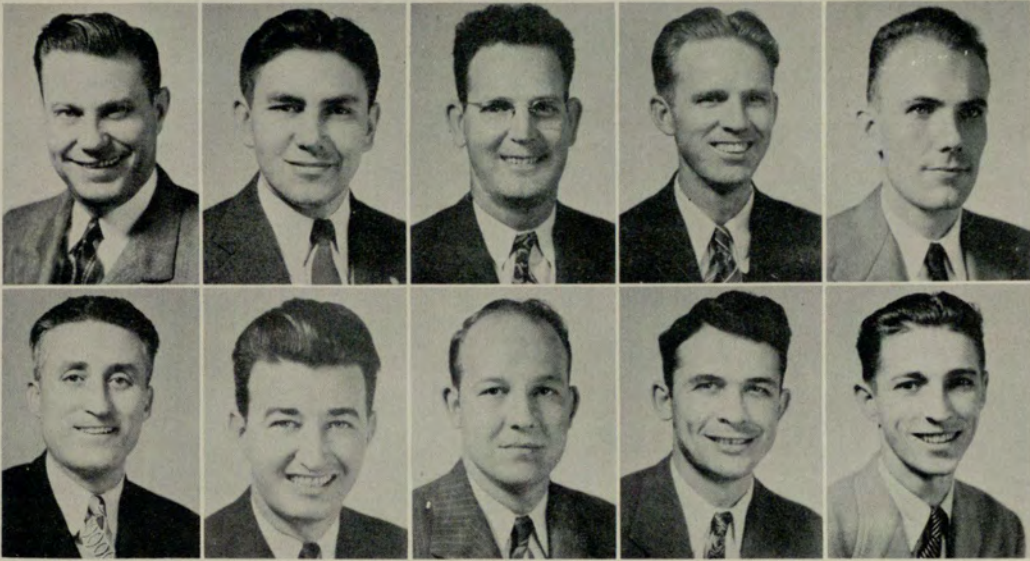


ALFRED FRANKLIN  
*Chairman, Board of Directors*

With the influx of hundreds of Veterans to the University System Center the Veterans Club found an opportunity to serve Vet-students of both the Junior College and the Evening College. It became the purpose of the Club to keep the Veterans informed of the benefits and privileges available to them as well as provide a common fellowship for former comrades in arms.

The William H. Manley Veterans Club was named in honor of the first Atlantian killed in action in World War II. William H. Manley, a student here from 1939 to 1941, died at Pearl Harbor, T. H., on December 7, 1941.

# VETERANS' CLUB



W. ROBERT ANGLIN   CHARLES W. BLACKSTOCK   HUGH D. BISHOP   RANDALL CARNES, JR.   J. MORRIS CLACKLER

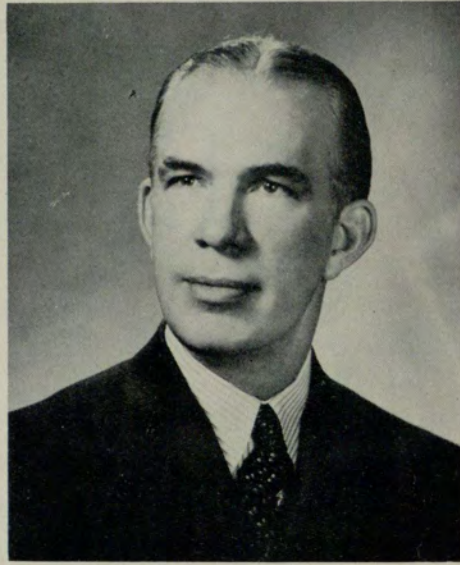
VICTOR L. DAVIS   CHARLES B. FARMER   TOM FARRAR   JAMES F. GUNTER   W. T. HAYES, JR.



ED HOWELL   JAMES C. JONES   JACK MARBUT   PIERCE MOORE   ORMAN F. NOBLES

LELAND O'CALLAGHAN   JIMMY PRESLEY   FRANK M. SPATH

# GLEE CLUB



JOHN D. HOFFMAN  
*Director*



OMER JOE LOOPER  
*President*



WILLIAM WATERS  
*Vice President*



ELSA O'CALLAGHAN  
*Librarian*



MIRIAM LAMSON  
*Publicity Chairman*



**"IN REHEARSAL"**



Bertha  
Benning

Louise  
Benning

Martha  
Benning

Lee  
Craig

Marjorie  
Davis

Hilda  
Doster

Jo  
Whitmire

Dolores  
Etheridge

Sara Ellen  
Levy

Jo Ann  
Martin

M. Webster  
Newbanks, Jr.

Al  
Snedgen

Norma  
Southard

Richard  
Turner

Dot  
Warlick

Elbert  
Woods

James B.  
Wooten

Robert  
Yarbrough

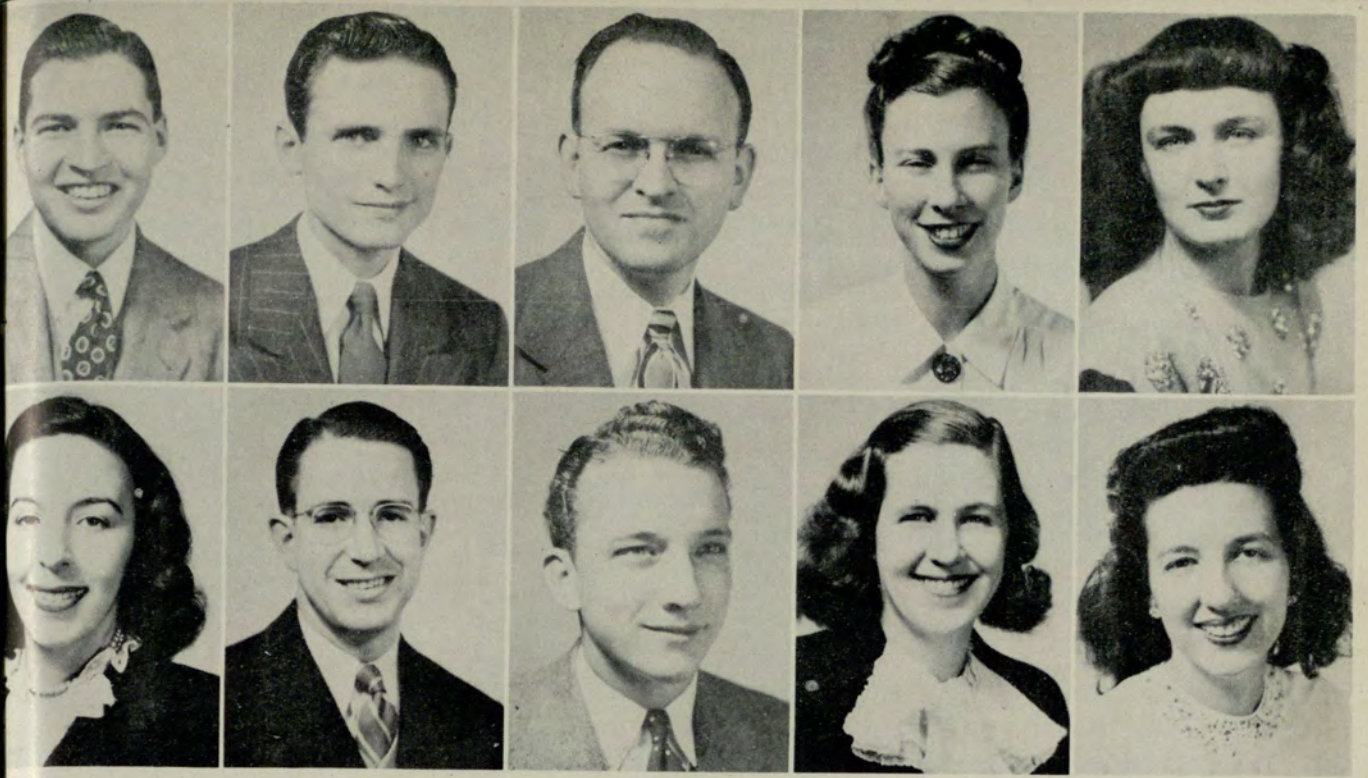


# SPUR CLUB



## OFFICERS

VERONA KILLINGSWORTH . . . . . *President*  
 MARY HEETH . . . . . *1st Vice-President*  
 AL SNEDGEN . . . . . *2nd Vice-President*  
 JULIA PARIS . . . . . *Secretary*  
 LOUISE TINSLEY . . . . . *Treasurer*  
 PROF. V. V. LAUROFF . . . . . *Faculty Advisor*



MEMBERS

EARL T. BYERS  
 RALPH CHAPMAN  
 JIMMIE M. EDWARDS  
 JO ANN FOSSETT  
 JULIA MANSTON

ANN MATTINGLY  
 WILLIAM (ED) PUCKETT  
 DON STEWART  
 CONNIE WALLER  
 ANTHONAE ZACHOS





JOHNNY VANN  
*President*

# DRAMATIC CLUB

1946-47



CHARLENE WILLIAMS  
*Vice President*



THELMA FIELD  
*Secretary*



REX EDMONDSON



FRANCES WINN



BUNNY RUSSELL



BOB WALL



JIMMY WOODWARD



BARBARA MERRITT



BEVERLY MILLER



JACK LITTLE



BOB LAMMIMAN  
*President*

OFFICERS

- BOB LAMMIMAN . . . . . *President*
- GENE KYSER . . . . . *Vice President*
- BILL BAXTER . . . . . *Secretary*
- HOWARD CLARK . . . . . *Treasurer*
- BOB MORRIS . . . . . *Historian*
- FORD RIVES . . . . . *Alumni Advisor*

**S**erve our school

**P**romote interest in public speaking

**E**ncourage intercollegiate debating

**A**fford an opportunity for improvement in public speaking

**K**eep forever in sight the light of wisdom and understanding

**E**xercise our right of inheritance, free speech

**R**esults in furthering a high standard of education

**S**atisfaction in our achievements



**C L U B**

Fred Brannon



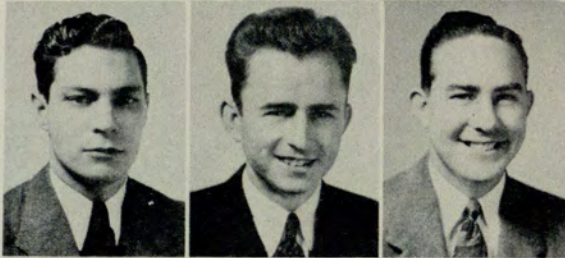
Larry Evans



Gene Kyser

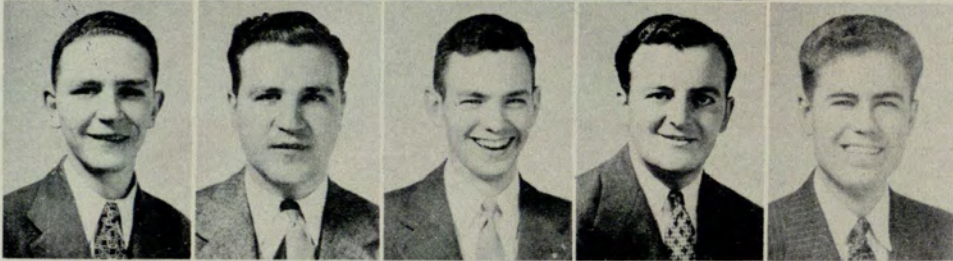
Frank Humphries

Hiram Honea



Bill Baxter

Bob Thomas



Howard Clark

Norwood Wayne

Bill Marr

Marcus Morris

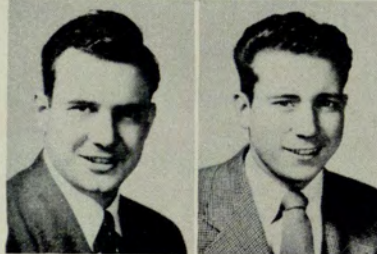
Ford Rives

Bob Morris



Alex Carter

Sam Denmark



Buey Roberts

Jack Beckham





... "To love the game above the prize"

# GIRLS' BASKETBALL TEAM

## EVENING DIVISION

BACK ROW: Frances Varner, Jewel Abt, Ann Morton, Donald Floyd, Manager; Madge Williams, Shirley Thomas, Charlotte Morgan. FRONT ROW: Ginger Taylor, Beth DeLockas, Viola Emley, Dot Williamson.



# BOYS' BASKETBALL TEAM

## DAY DIVISION

BACK ROW: Pat Riggs, Julius Silverman, Jim Richardson, Jim Hale, Dan Cooper, Jim Gullett,  
"Stoney" Burgess. FRONT ROW: John DeBorde, Benny Edelstein,  
George Russell, Robert Hayes, Lefty Hancock.





# SNAPS





... "And blest be beauty that enchants"

# BEAUTIES



*Queen of University Center*

PAT TATE

*Representing Day Division*

EVELYN HYDE

*Representing Pre-Junior Class*

*Evening Division*



EVELYN WINFREE  
*Representing Junior Class  
Evening Division*





PEGGIE MORRIS

*Representing Delta Sigma Pi Fraternity*

*Evening Division*



SARA GREGORY  
*Representing Senior Class  
Evening Division*

DOT ENNIS

*Representing Freshman Class*

*Day Division*

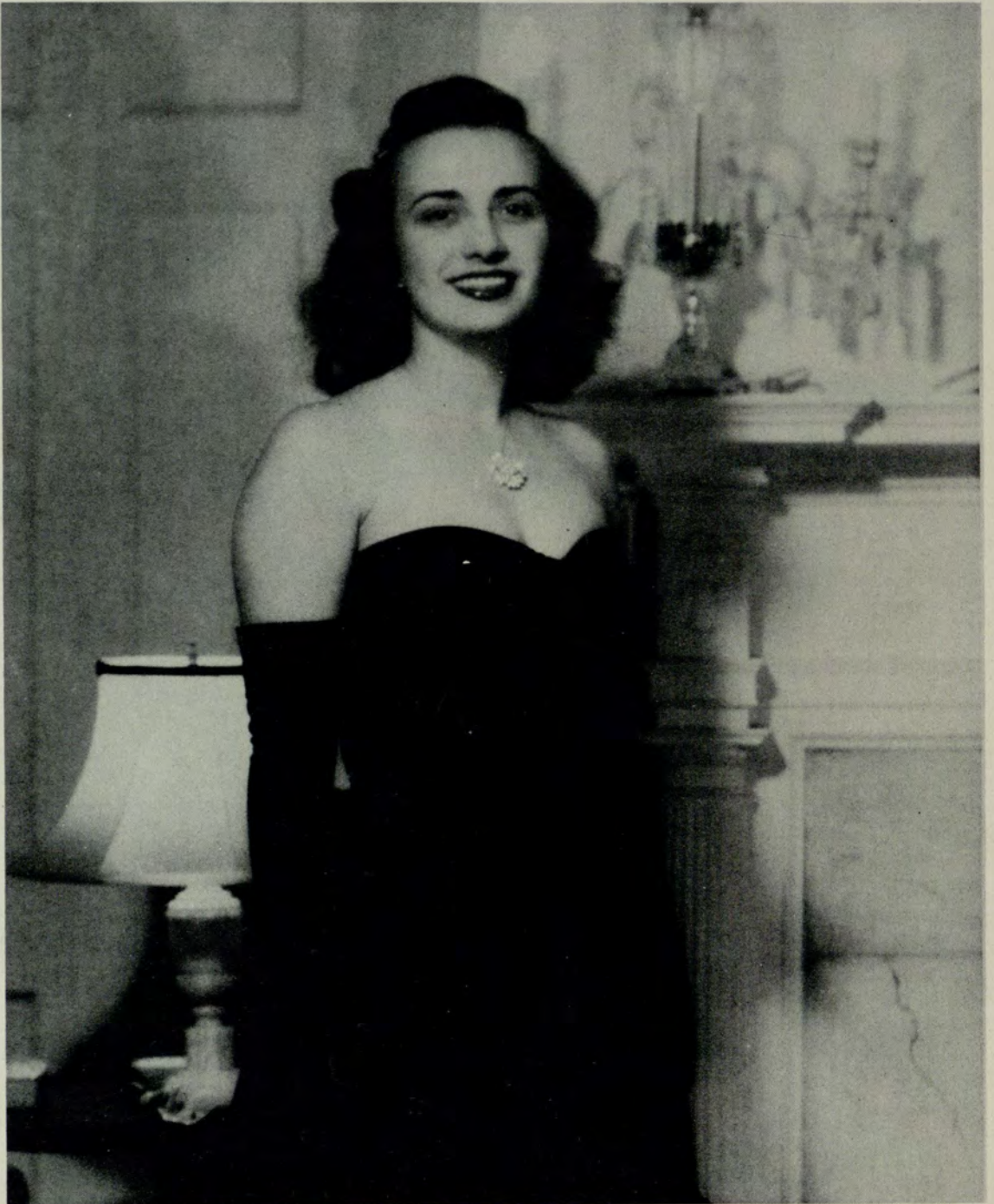


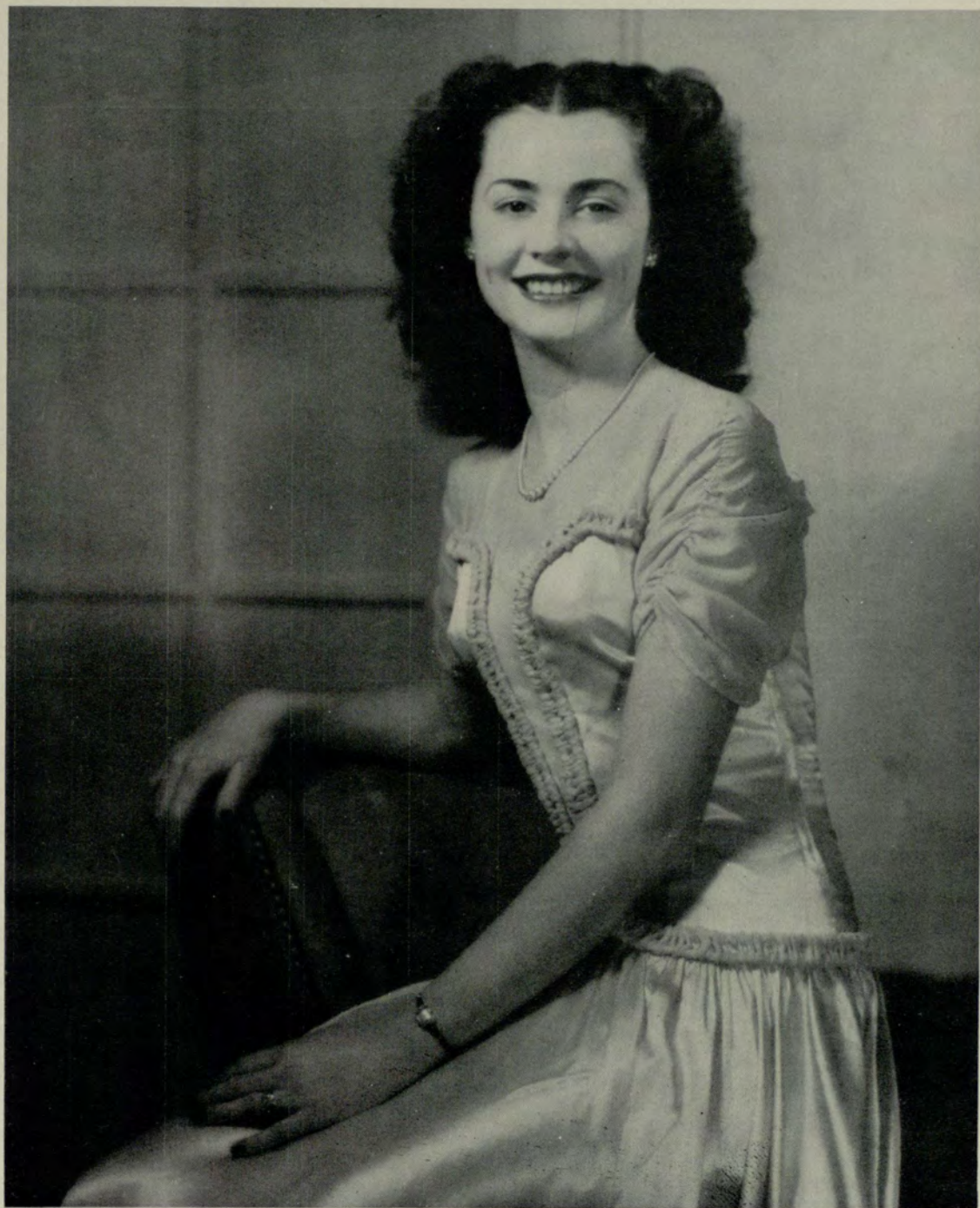


DOT LEMON

*Representing Tri Beta Sorority*

*Day Division*





CAROL MINOR

*Representing Freshman Class  
Evening Division*



HARRIET PERRY

*Representing Chi Rho Sigma  
Day Division*

GRACE ANDERSON

*Representing Evening Division*



ANN JOHNSON  
*Representing Day Division*

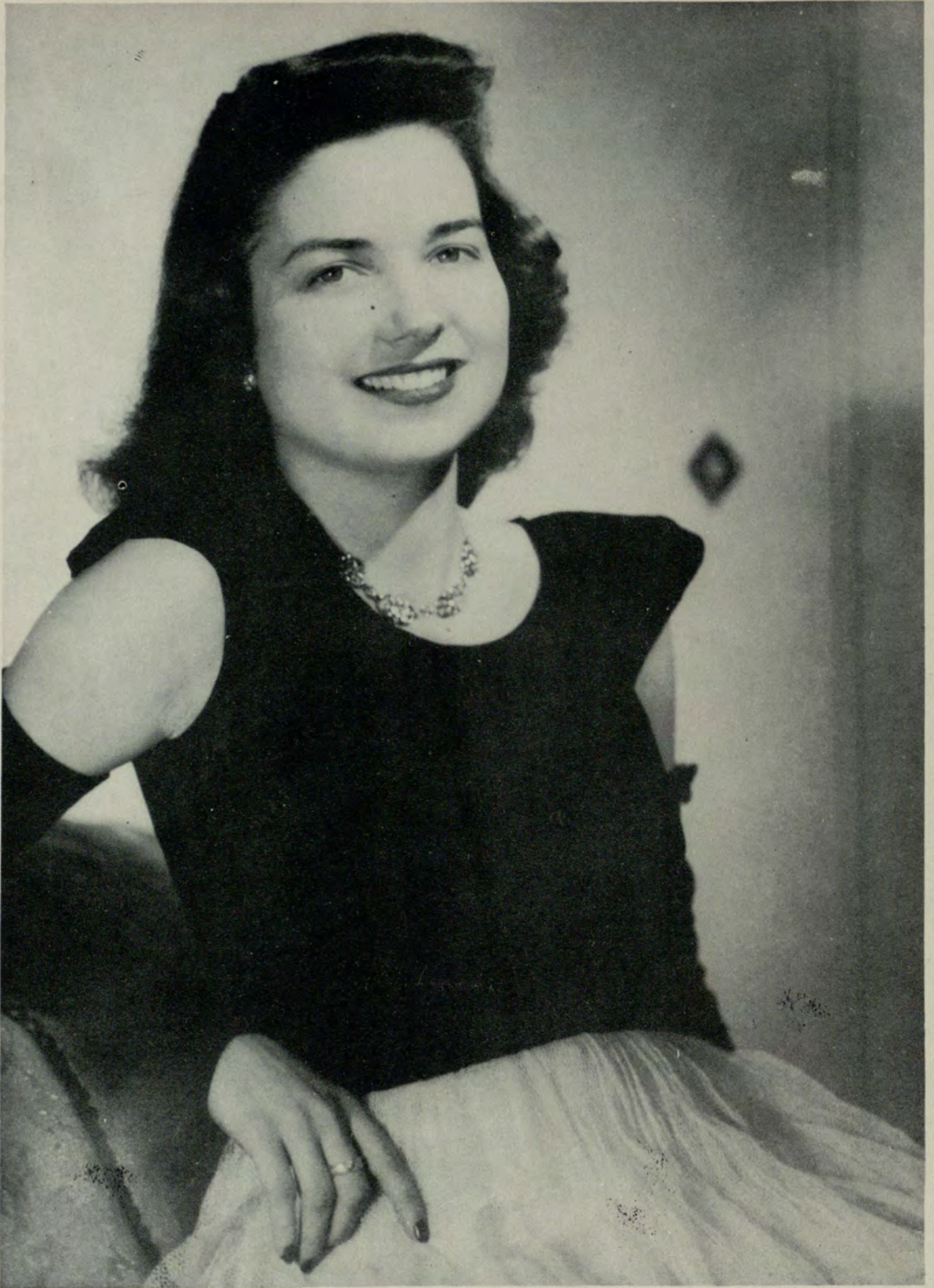




CAROLYN HAYES

*Representing Kappa Theta Sorority*

*Evening Division*



MARTHA YORK  
*Representing Evening Division*

VERA HILL

*Representing Freshman Class*

*Evening Division*





# RAMPWAY BEAUTY REVUE



Band Leader Sammy Kaye crowns Rampway Beauty Queen Pat Tate while Editor Bill Marr presents flowers, at The Rampway Beauty Revue, Shrine Mosque, January 23, 1947.

Below: Sammy Kaye jitterbugs with Queen.





Beauty Judges Léonard V. Skvirsky, Barbara Wood, Sammy Kaye, Mike Benton, Enid Day, and Margaret McLemore go into huddle while Rampway Staff Consultant Margaret Slocum looks on.



Research & Composition Editor Jimmie Edwards, Editor Bill Marr, Staff Consultant Margaret Slocum, and Rampway Dance Chairman Paul Otwell pose for camera with Band Leader Sammy Kaye.







*Willis*

... "I know what pathway leads to popularity"



Mr. and Miss Junior College  
 BILL BAILEY and ANN JOHNSON



Most Outstanding Freshman  
 PAT RIGGS



*Most Attractive*  
BOB HAZELRIG and SHIRLEY PURCELL



*Most Versatile Boy and Girl*  
BOB WATSON and LAFAYE LEAKE



*Most Popular Boy and Girl*  
BOB WATSON and ANN JOHNSON

*Most Studious Boy and Girl*  
JOHNNIE JOHNSON and BARBARA SCHEELER





*Most Dependable Boy and Girl*  
"JOE" WOODS and VIRGINIA MILLER



*Friendliest Boy and Girl*  
GEORGE NASH and SARA ELLEN LEVY





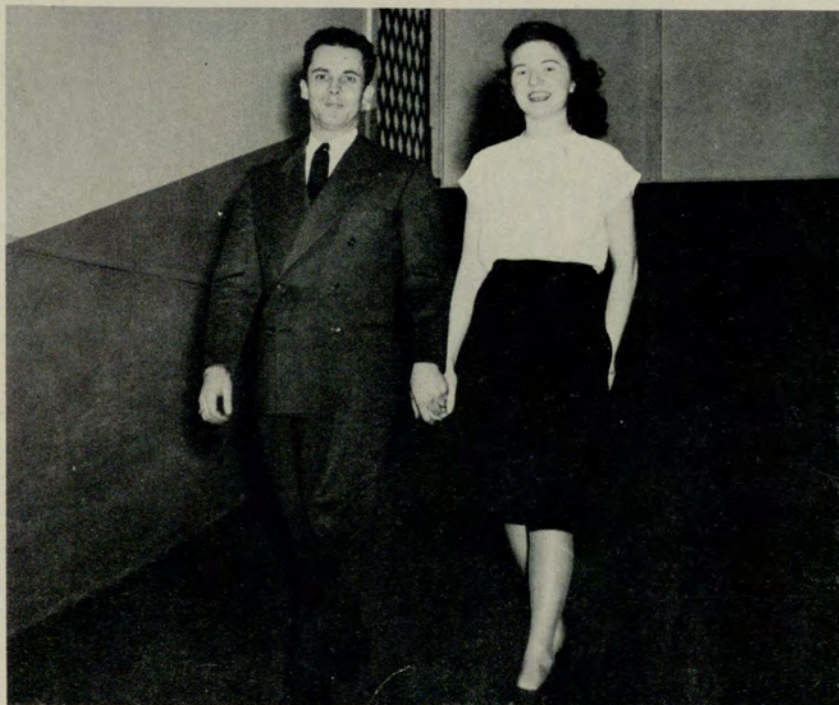
*Wittiest Boy and Girl*  
CHARLIE CARROLL and JEAN HOVIS



*Most Athletic Boy and Girl*  
WILLIS VANFRANK and RUTH GASKIN



*Mr. and Mrs. Evening College*  
AL KUETTNER and VIRGINIA DARNELL



*Most Popular*  
JAN KELLER and ALBERTA LOYD



*Most Dependable*  
HAROLD JACKSON and MARGARET SLOCUM



*Most Attractive*  
TRACY O'NEAL and BETTY MOORE



*Cutest*  
MARCUS MORRIS and LURLINE CARLISLE



*Wittiest*  
BILLY YOUNG and JOYCE BROWN



*Best Dressed*  
LUKE DARNELL and TONY SAWYER



*Biggest Wolf and Wolverine*  
BILL BAXTER and PEGGY MAFFETT

LIBRARY  
University Extension  
Center - Atlanta

The Faculty and Students of the  
University Center express their appreciation to the public-spirited citizens who  
have purchased space in the  
following pages.

THE BEST DRESSED MEN WEAR



"SCHWOBILT SUITS THE SOUTH"

**A GREAT NAME IN CLOTHING**

**here's a Lesson in  
Quality and Thrift**

For your homework today, visit  
your neighborhood A & P  
for  
QUALITY FOODS AND  
THRIFTY PRICES

**A & P SUPER MARKETS**



## “Have a Coke”

There's friendliness in the simple phrase, “Have a Coke”. It turns strangers into friends . . . Coca-Cola stands for *the pause that refreshes*—has become the high-sign of people of good will.

Bottled Under Authority of The Coca-Cola Company by

**THE ATLANTA COCA-COLA BOTTLING CO.**

*Compliments of*

ATLANTA'S OLDEST FORD  
DEALER



**ERNEST G. BEAUDRY, INC.**



143 Cone Street

CYpress 3424

*“Meet me at the*



***Cotton Patch***

*and we'll have a good  
old fashioned Barbecue”*



PORTRAITS  
GLAMOUR PHOTOGRAPHS  
WEDDINGS AND COLOR PHOTOGRAPHY



# SILLAY PHOTO COMPANY

62½ Lee Street

AMherst 4577

*"Your Rampway Photographer"*

Compliments of



**Economy**  
AUTO STORES

J. P. STEVENS  
ENGRAVING COMPANY



Wedding, Reception, and  
Visiting Cards

Personal Stationery



110 Peachtree St.

Atlanta, Ga.



# IN THE SHADOW OF THE HURT BUILDING...

. . . THE STATE OF GEORGIA is now operating one of the outstanding COLLEGE CENTERS in the country, where VETERAN-STUDENTS may work in the day and receive government benefits for doing college work in the evening.

. . . *Day Division* — 9 to 5, each day, Monday through Friday. Schedules arranged so students may work in the morning or in the afternoon.

. . . *Evening Division* — Workers in GREATER ATLANTA AREA attend classes from 5:15 to 9:00 Mondays, Wednesdays, and Fridays, or Tuesdays and Thursdays.

## . . . NEW FACILITIES

An AUDITORIUM-GYMNASIUM, the second unit in the building program, will provide an enlarged recreational program for the more than 4,000 students and their friends . . . this in addition to the six-story million and a half dollar building, with its 46 classrooms, 6 laboratories, cafeteria, library, clinic, snack shops, and parking lot.

Address Registrar

**UNIVERSITY SYSTEM CENTER**

Downtown Atlanta

Atlanta, Georgia

LEARN THE LESSON  
OF THRIFT  
AND GRADUATE TO  
GREATER SAVINGS

AT

**BIG STAR            LITTLE STAR**  
**ROGERS STORES**

*Kitchens by* **DEL-MAR**

**DEL-MAR CABINET CO., INC.**

ATLANTA, GEORGIA

•

Another Relocated Industry  
Serving the Nation from Georgia

*THE VARSITY*

**FRESH FOODS**

•

**CURB SERVICE**

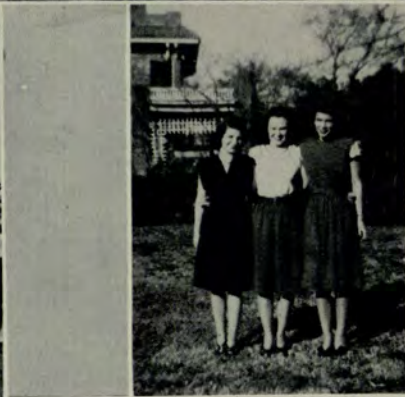
**AMERICAN  
SAVINGS  
BANK**

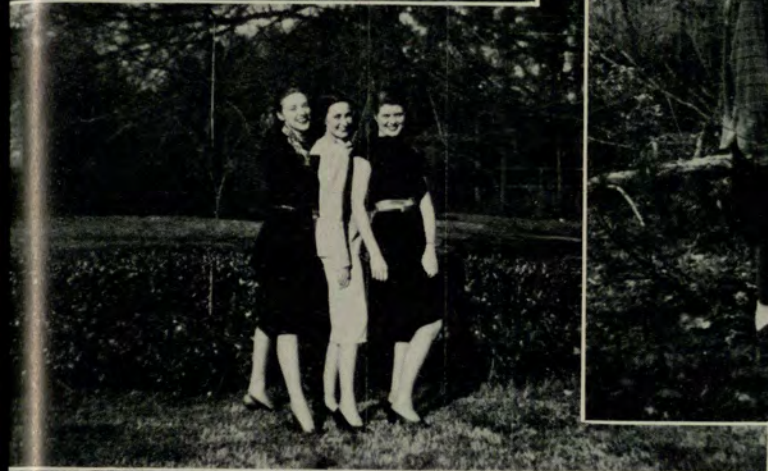
140 Peachtree Street

•

"Truly American Since 1887"

Member of F.D.I.C.





# MAX NEWS STORE

BOOKS, MAGAZINES, TOBACCO  
CANDY

OUT OF TOWN NEWSPAPERS



16 Walton Street

Best Wishes

From

**FOREMOST DAIRIES**



2711 Piedmont Road, N. E.

CHerokee 9431

Atlanta, Ga.

**QUALITY**

At No Extra Cost

EAT

**MRS. HILL'S  
SANDWICHES**

FRESH — DELICIOUS  
SATISFYING

SOLD IN  
THE REFECTORY



**HOLZMAN'S**

*One of America's Finer Jewelers*

29 Broad Street, S. W.

If you're young . . . you're "219"



## ADAMSON PRINTING CO.

Serving the South for More Than  
Thirty-five Years

25 Warren Place

MA. 2867

## BINDERS

EXPERT PICTURE FRAMING, PICTURES,  
MIRRORS, GIFTS, GREETING CARDS

Let Us Frame Your Diploma

74 Broad St.

WAlnut 1477

## DUMAS ENTERPRISES

Operating

COLLEGE GRILL  
COLLEGE CAFETERIA  
McARTHUR STEAK HOUSE  
HAMBURGER HEAVEN  
HOLSUM CAFETERIA

All Over Atlanta

## COX MUSIC SHOP

Phonograph Records

Sheet Music

Radio Repair

"All the Latest Hits FIRST"

161 Peachtree St.

MAin 2378

## ROSE MARRE FLORIST

Open Evenings and Sundays



516 Peachtree St.

AT. 4225

ATLANTA, GA.

## MILTON BRADLEY CO. OF GA., INC.

Educational Materials

Toys — Games

384 Forrest Ave., N. E.

## ORIGINAL WAFFLE SHOP

Famous for

Delicious Steaks, Seafood, Chicken Dinners

62 Pryor St.

MA. 1552



*Compliments of*

A FRIEND

RADIOS — PHONOGRAPH RECORDS  
ELECTRICAL APPLIANCES

BAME'S INC.

60 Broad St., N. W.

MA. 5776

Where the newest fashion is an old tradition



MARCUS CLOTHING CO.

62 Peachtree St.

Thru to Broad

**80 WHITEHALL**

**REGENSTEINS**

**209 PEACHTREE**

BILL TODD

*Re-tir-ing-ly Yours*

GORDON'S



Fresh

POTATO CHIPS

SALTED PEANUTS

PEANUT BUTTER SANDWICHES

CAKES — NUTS — CANDIES

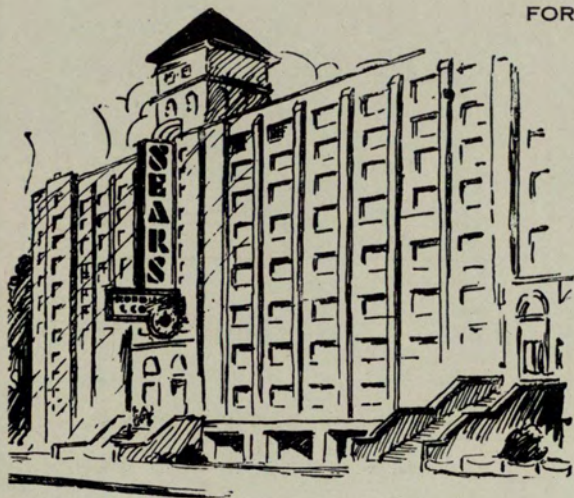
**GORDON FOODS**

*Trucks Serving the South*

**RIALTO THEATER**

Corner Forsyth and Luckie

Wishes the student body of Georgia Evening School and Junior College the goal they aspire to.



FOR THE GOLDEN TREASURE CHEST OF VALUES

"X" MARKS

THE SPOT

And the "Spot" is Sears, Roebuck and Co! This year Sears is celebrating it's 60th Anniversary of continuous, helpful service to Atlanta and the surrounding community. . . . Visit us tomorrow . . . on the street car . . . drive out—parking facilities in our own back yard . . . or, if you wish, call our Telethrift Department for prompt, efficient shopping by telephone!

SEARS, ROEBUCK AND CO.

## *The Ellen Rice*

TEA ROOM

DELICIOUS MEALS  
AT REASONABLE PRICES

JOHN D. HOFFMAN

*Teacher of Singing*

MRS. L. D. KING, Associate  
MISS MARY LOU BOLLINGER, Accompanist



PATRONIZE  
OUR  
ADVERTISERS

Two and One-half Auburn Ave.

Telephone JAckson 0674



**THE REFECTORY  
TERRACE ROOM**

FOR YOUR  
PLEASURE AND CONVENIENCE

WE SELL

ICE COLD COCA-COLA  
CLOVERDALE MILK                      GORDON'S POTATO CHIPS  
DR. PEPPER — "7" UP  
JONES' PURE FRUIT JUICE              DORTCH BAKING PRODUCTS  
CRISWELL'S PIES AND CAKES              HILL'S SANDWICHES  
CANADA DRY GINGER ALE                  WILSON ICE CREAM  
J. N. HIRSCH CANDY                      J. B. WITHERS CIGARS

CIGARETTES — CIGARS

*We Recommend These Products to Our Students*

PATRONIZE  
  
OUR  
  
ADVERTISERS

***When Did You Have Your  
Last Blind Date?***

FOR FIVE STAR VENETIAN BLIND SERVICE . . .  
MAKE A BLIND DATE WITH US

- ★ HIGHEST QUALITY  
CUSTOM MADE BLINDS
- ★ 24 HOUR AUTOMATIC LAUNDRY  
SERVICE
- ★ EXPERT REFINISHING
- ★ RUSCO ALL METAL VENETIAN  
AWNINGS
- ★ LIFETIME METAL SCREENS

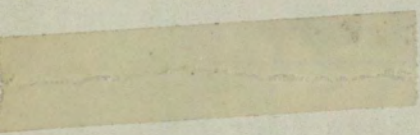
Call HEmlock 4523



2116 Peachtree Road

Atlanta, Ga.

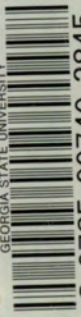
13



1  
B 394



GEORGIA STATE UNIVERSITY



3 0785 00740 2845

