



THE
SURVEY



1937

LD 1965
.S86
1937



University System
of Georgia

UNIVERSITY SYSTEM
CENTER LIBRARY
ATLANTA

~~R378.93~~
~~Survey~~
~~1937~~

THE SURVEY



PUBLISHED BY THE STUDENTS
OF
ATLANTA JUNIOR COLLEGE

223 WALTON STREET, N. W.

ATLANTA, GEORGIA

LIBRARY
UNIVERSITY EXTENSION
CENTER - ATLANTA

LD 1965

.586

1937

~~AD 1961~~

~~G85 58~~

~~1937~~

T H E S U R V E Y

FOREWORD » » » »

IF by chance in future years you look upon your college days, and in so doing, review this book with pleasure, the staff will have accomplished its task and its work will not have been in vain.

24422

T H E S U R V E Y



DR. GEORGE M. SPARKS

The students of the Atlanta Junior College are indeed grateful to the Board of Regents of the University System of Georgia for designating Dr. George M. Sparks as director of the Atlanta Junior College.

We, the students, know Dr. Sparks as a man who puts his words into action. It is through his efforts that a new building has been secured for the College and also that the appropriation from the state to our school has been increased.

Dr. Sparks has worked with young people for the last twenty years. He knows their likes, dislikes; their wants as well as their needs.

The Junior College is fortunate to have as its director a man whose experience makes him the true leader that he is.

May we hold high the spirit which he has created and continue to work with him in his efforts to secure for Atlanta the Educational Facilities which, as a city, she deserves.

T H E S U R V E Y

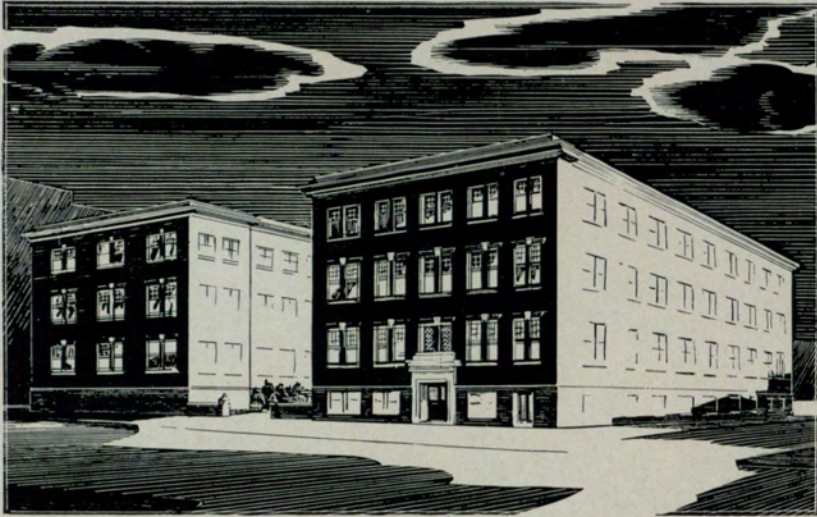
DEDICATION » » » »

TO the man whose invaluable understanding and assistance has made the publication of this annual possible and has greatly lessened the gravity and frequency of our mistakes—We, the staff, dedicate this, the first volume of the Survey.



MR.
THEODORE
M. McCLELLAN

T H E S U R V E Y



NEW HOME OF THE
ATLANTA JUNIOR COLLEGE

161 LUCKIE STREET, N. W.

ATLANTA, GEORGIA

T H E S U R V E Y

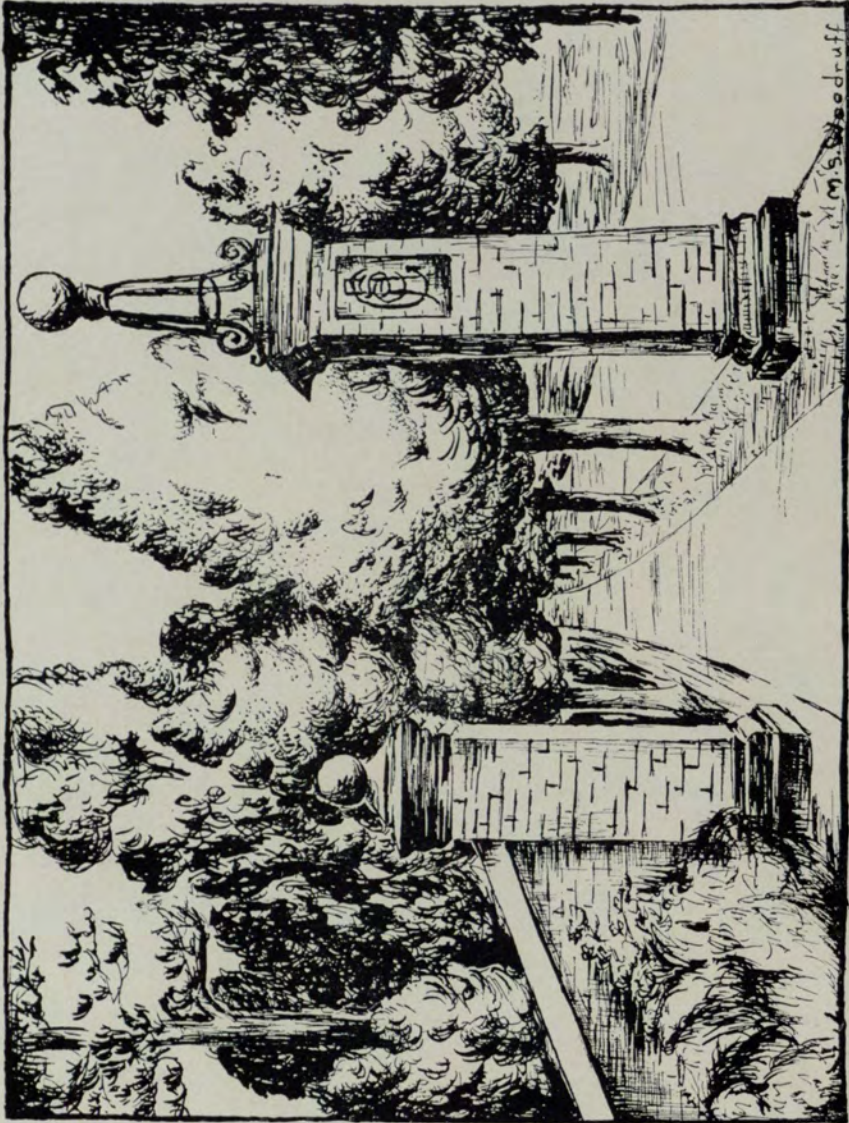
THE ATLANTA JUNIOR COLLEGE

The establishment of the Atlanta Junior College as an accredited unit in the University System of Georgia, has given to the City of Atlanta the chance to become the Educational Center of the South.

We as students of the Atlanta Junior College are deeply grateful to our directors, instructors, and friends for the interest which they have shown in aiding us to establish a school which we will be proud of in the years to come.

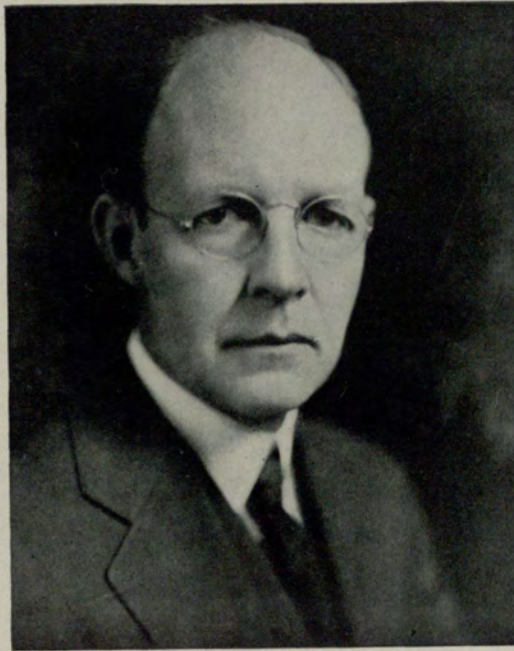
We sincerely hope that not very far hence, we will see the establishment of the senior college years in Atlanta.

T H E S U R V E Y



T H E S U R V E Y

BOARD OF REGENTS



HON. MARION SMITH

MARION SMITH *Chairman*
MILLER S. BELL *Vice-Chairman*
LEONARD R. SIEBERT *Secretary*
WILSON NOYES *Treasurer*

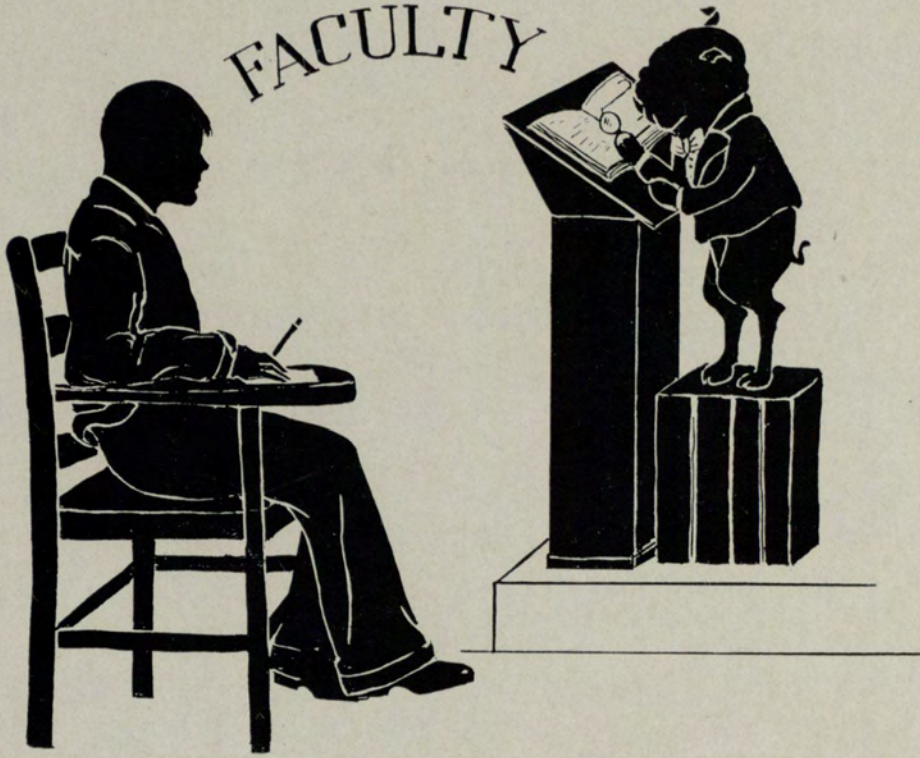
E. D. RIVERS, Ex-Officio
Governor of Georgia
MARION SMITH, Atlanta
State-at-Large
E. O. HUNTER, Savannah,
First Congressional District
JOHN MONAGHAN, Pelham,
Second Congressional District
GEORGE C. WOODRUFF, Columbus,
Third Congressional District
CASON J. CALLAWAY, LaGrange,
Fourth Congressional District

CLARK HOWELL, JR., Atlanta,
Fifth Congressional District
MILLER BELL, Milledgeville,
Sixth Congressional District
CHARLES M. MILAM, Cartersville
Seventh Congressional District
M. D. DICKERSON, Douglas,
Eighth Congressional District
SANDY BEAVER, Gainesville,
Ninth Congressional District
R. P. BURSON, Monroe,
Tenth Congressional District

T H E S U R V E Y



FACULTY



T H E S U R V E Y

FACULTY



T H E S U R V E Y

F A C U L T Y

ELMER G. CAMPBELL, B.S., M.S., Ph.D.

B.S. Hiram College of Ohio

M.S. Purdue University

Ph.D. University of Chicago

Professor of Biology

E. L. FLOYD, A.B., M.A., LL.B.

A.B. University of Georgia

M.A. University of Georgia

LL.B. University of Georgia

MRS. A. D. GREGORY, A.B., B.M.

A.B. Centenary College

B.M. Centenary College

LUTHER R. HOGAN, A.B., M.A., LL.D.

A.B. Mercer University

M.A. University of Chicago

LL.D. Meridian College

Professor of Psychology and Education

MRS. J. B. HOSMER, A.B., Fine Arts Certificate

A.B. Washington University

Fine Arts Certificate St. Louis School of Fine Arts

Professor of Art

T H E S U R V E Y

F A C U L T Y

HAL HULSEY, A.B., M.A.

A.B. University of Georgia

M.A. University of Georgia

Professor of Foreign Languages

MRS. W. S. KELL, B.S.

B.S. Emory University

Professor of Home Economics

V. V. LAVROFF, B.S.C.

B.S.C. Georgia School of Technology

Professor of Mathematics and Accounting

JOSEPH N. LECONTE, A.B., M.A., Ph.D.

A.B. Emory University

M.A. Emory University

Ph.D. University of North Carolina

Professor of Chemistry and Natural Sciences

CARL MAUELSHAGEN, B.S., M.A., Ph.D.

B.S. University of Tennessee

M.A. University of Chicago

Ph.D. University of Minnesota

Professor of Histories

T H E S U R V E Y

F A C U L T Y

WINSLOW PORTER, A.B., M.B.A., LL.D.

A.B. Boston University

M.B.A. Harvard University

LL.D. University of Missouri

Professor of Economics

JAMES E. ROUTH, A.B., Ph.D.

A.B. Johns Hopkins University

Ph.D. Johns Hopkins University

Professor of English and Humanities

RAYMOND A. STYLES, B.S.C.

B.S.C. University Extension Center Night Division

Professor of Typewriting

DR. MERLE WALKER, A.B., M.A., Ph.D.

A.B. Hollins College

M.A. Radcliffe

Ph.D. Radcliffe

Professor of English and Humanities

MRS. H. W. WALKER, A.B.

A.B. Oglethorpe University

Professor of Shorthand and Typewriting



T H E S U R V E Y

SOPHOMORE CLASS

OFFICERS

TOM EIDSON
President

LOUISE KING
Vice-President



SIDNEY WATKINS
Treasurer

RUTH SANDERS
Secretary

T H E S U R V E Y

MEMBERS OF SOPHOMORE CLASS



CATHERINE PAULINE
BAKER

Graduate of Russell High, East Point; President Art Club, Honor Society, Interfraternity Council, Annual Staff, Dramatic Club, Pledge Captain—Delta Alpha Delta Sorority.



KATHERYN BAYNES

Attended University of Georgia, Athens; Graduate of Girls High, Atlanta; Glee Club, Honor Society.



MELROSE BLACK

Graduate of Avondale High, Avondale Estates; Glee Club, Debating Club.



MARGARET BLACKWELL

Graduate of Central High, Memphis, Tenn.; Interfraternity Council, Secretary and Treasurer Delta Alpha Delta Sorority.



EARLENE RUBY BLAIR

Graduate of Fulton High, Atlanta; Delta Alpha Delta Sorority.



WILLIAM B. BROWN

Graduate of Tech High, Atlanta; Debating Club, Sargent-at-arms Lambda Mu Chi Fraternity.

T H E S U R V E Y

MEMBERS OF SOPHOMORE CLASS



GERTRUDE E. CAIN

Graduate of Fulton High, Atlanta; Honor Society, Winter Quarter 1937.



ANNE LEE CASTLES

Attended the University of Georgia, Athens; Graduate of Decatur Girls High, Decatur; President Home Ec. Club, Interfraternity Council.



EUGENIA A. COLLINS

Graduate of Commercial High, Atlanta; Dramatic Club, Home Ec. Club, Delta Alpha Delta Sorority.



EVELYN COMBS

Graduate of Russell High, East Point; Dramatic Club, Home Ec. Club, Delta Alpha Delta Sorority.



TOM EIDSON

Graduate of Boys High, Atlanta; Interfraternity Council, Honor Society, Winter Quarter 1937, President Sophomore Class, President Lambda Mu Chi Fraternity.



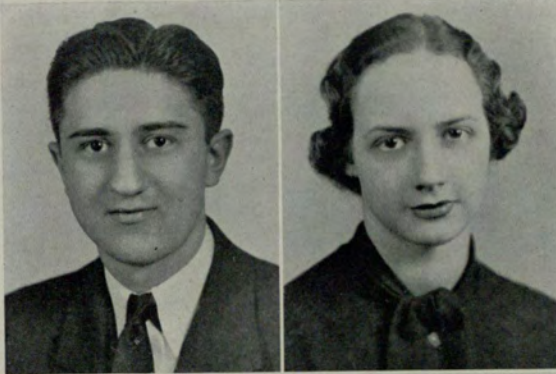
SARAH GILLILAND

Attended Cox College, College Park; Graduate of Russell High, East Point; Delta Alpha Delta Sorority.

LIBRARY
UNIVERSITY EXTENSION
CENTER - ATLANTA

T H E S U R V E Y

MEMBERS OF SOPHOMORE CLASS



SOL GREENBERG

Attended Emory University, Atlanta; Graduate of Boys' High, Atlanta; Honor Society, Spring 1937.

BETTY HAYS

Graduate of Decatur Girls High, Decatur; Home Ec. Club.



MONA CAROLINE JACKSON

Graduate of Girls High, Atlanta; President of Delta Alpha Delta Sorority, Editor of Annual, Interfraternity Council.

LOUISE KING

Attended Emory University, Atlanta; Graduate of Druid Hills High, Atlanta; Secretary of Dramatic Club, Secretary of Interfraternity Council, President of Chi Rho Sigma Sorority, Vice-President of Sophomore Class.



DON MAHONEY

Attended Emory University, Atlanta; Graduate of Boys High, Atlanta.

MARIE MERCK

Graduate of Stone Mountain High, Stone Mountain, Georgia; Art Club.

T H E S U R V E Y

MEMBERS OF SOPHOMORE CLASS



ELEANOR MORRIS

Graduate of Handley High, Roanoke, Ala.; Interfraternity Council, Secretary of Chi Rho Sigma Sorority, Secretary of Student Government.

NETTIE ROSE O'NEAL

Attended Cox College, College Park, Ga.; Graduate of Jackson High, Jackson, Ga.; Glee Club.



ROBERT M. PARKER

Attended North Georgia College, Dahlonega; Graduate Campbell High, Fairburn; Interfraternity Council, Lambda Mu Chi Fraternity.

ELIZABETH PIERCE

Graduate Decatur Girls High, Decatur; Chi Rho Sigma Sorority.



RUTH SANDERS

Graduate of Edison High, Edison, Ga.; Glee Club, Secretary of Sophomore Class.

SIDNEY WATKINS

Graduate of Tech High, Atlanta; Debating Club, Treasurer of Sophomore Class, Interfraternity Council, Lambda Mu Chi Fraternity.

T H E S U R V E Y



ANNE GLENN HAGOOD

Whose gentle, happy nature is, even yet, an inspiration and comfort to those who knew and loved her;

Whose warm friendliness and simple sincerity made her master of the enviable art of making friends;

Whose steady courage in the face of uncompromising odds is a daily reminder that God can fortify for every need,

We affectionately and appreciatively dedicate this page.

T H E S U R V E Y

SOPHOMORE CLASS ROLL

Baker, Catherine Pauline
Blackwell, Margaret Elizabeth
Blair, Earlene Ruby
Brown, William Bruce
Cain, Gertrude Eleanor
Collins, J. Eugenia
Combs, Evelyn
Eidson, Tom M.
Gilliland, Sarah
Greenberg, Sol
Hughey, Edith

Jackson, Mona Caroline
Jenkins, Lois Edith
King, Louise
Merck, Marie
Morris, Mary Eleanor
O'Neal, Nettie Rose
Parker, Robert M.
Pierce, Elizabeth Hogan
Sanders, Ruth
Watkins, Sidney Johnston
Williams, Nellie



T H E S U R V E Y

FRESHMAN CLASS

OFFICERS

JACK STERRETT
President



EDNA POWER
Vice-President



EDWIN WALKER
Secretary



FRANCES KEYES
Treasurer

T H E S U R V E Y

MEMBERS FRESHMAN CLASS



JOE ALEXANDER

KAY ALLING



JULIAN ASHER

RUTH BACON



JAMES P. BAKER, JR.

RICHARD BATEMAN



R. A. BAXTER

HELEN BEAM



CHARLOTTE BEHM

LUCILLE BOSWELL



RUTH BOYD

CHARLES D. BROWN



GERALDINE FARRAR CHAMBERS

NANCY CHAMBERS

T H E S U R V E Y

MEMBERS FRESHMAN CLASS



HELEN CRAIG

PAUL E. CRANE



MARGARET EWING

SARAH EVERETTE



SIDNEY FARRAR

DOROTHY FRANKEL



CHARLES OSKAR FRASCH

THELMA GIBSON



WILLATHEA INEZ GOODMAN

BETTY GORDON



MARY GORMAN

FRANCES GORMAN



EDITH GREENE

NANCY ELIZABETH HAMILTON

T H E S U R V E Y

MEMBERS FRESHMAN CLASS



LOUISE HAMMACK

JOHN PRYOR HAYS, JR.



FRANCES KEYES

GAYNELLE McDONALD



NEIL JOSEPH McRIMMON, JR.

EUGENIA O'BRYAN



GENE PALMER

JIM PANTELLO



MARGARET PERRIN

EDNER POWER



MEREDITH RICE

JULIETTE SIMS



ELOIS LUNELLE SMITH

ANDREW HORACE SPARKS, JR.

T H E S U R V E Y

MEMBERS OF FRESHMAN CLASS



JACK STERRETT



HELEN TERRELL



MAE LYNN TUCKER



NETTIE BELLE VAUGHAN



HELEN VENEV



ROBERT EDWIN WALKER



ALICE WALLACE



DOROTHY WHELCHER



JANELLE WILLOUGHBY



WINIFRED WINGO



WOODROW WOOD



EUGENIA ZACHARY



HELEN FARMER

T H E S U R V E Y

FRESHMAN CLASS ROLL

Alexander Joe	Gorman, Mary
Alling, Katherine Willis	Greene, Edith
Asher, Julian	Hamilton, Nancy Elizabeth
Askew, Mable Elizabeth	Hammack, Louise
Bacon, Ruth	Hays, John Pryor
Baker, Lathrope	Honliker, Armond
Barlow, Barbara	Keyes, Mary Frances
Baxter, Reuben Augustus	McDonald, Gaynelle
Beam, Helen	McRimmon, Neil J.
Behm, Charlotte	O'Bryan, Eugenia
Black, Melrose	Palmer, Gene
Boswell, Lucille	Pantello, Jim George
Boyd, Ruth	Reghini, Vittoria Mary
Brown, Charles D.	Rice, Meredith
Chambers, Geraldine Farrar	Sims, Juliette
Chambers, Nancy Eleanor	Smith, Eloise Lunelle
Craig, Helen Hiers	Sparks, Andrew Horace, Jr.
Crane, Paul Edgar	Sterrett, J. H.
Everette, Sarah Elizabeth	Terrell, Helen Marie
Ewing, Margaret Evangeline	Tucker, Onita Maelynn
Farmer, Helen Lorraine	Vaughn, Nettie Belle
Farrar, Sidney Henry	Veney, Helen F.
Frasch, Charles Oskar	Walker, Robert Edwin
Gibson, Frances Elizabeth	Wallace, Alice Lee
Gibson, Thelma Irene	Whelchel, Dorothy
Goodman, Willathea Inez	Willoughby, Janelle
Gordon, Betty	Wingo, Winifred Edna
Gorman, Frances	Zachary, Eugenia A.

T H E S U R V E Y

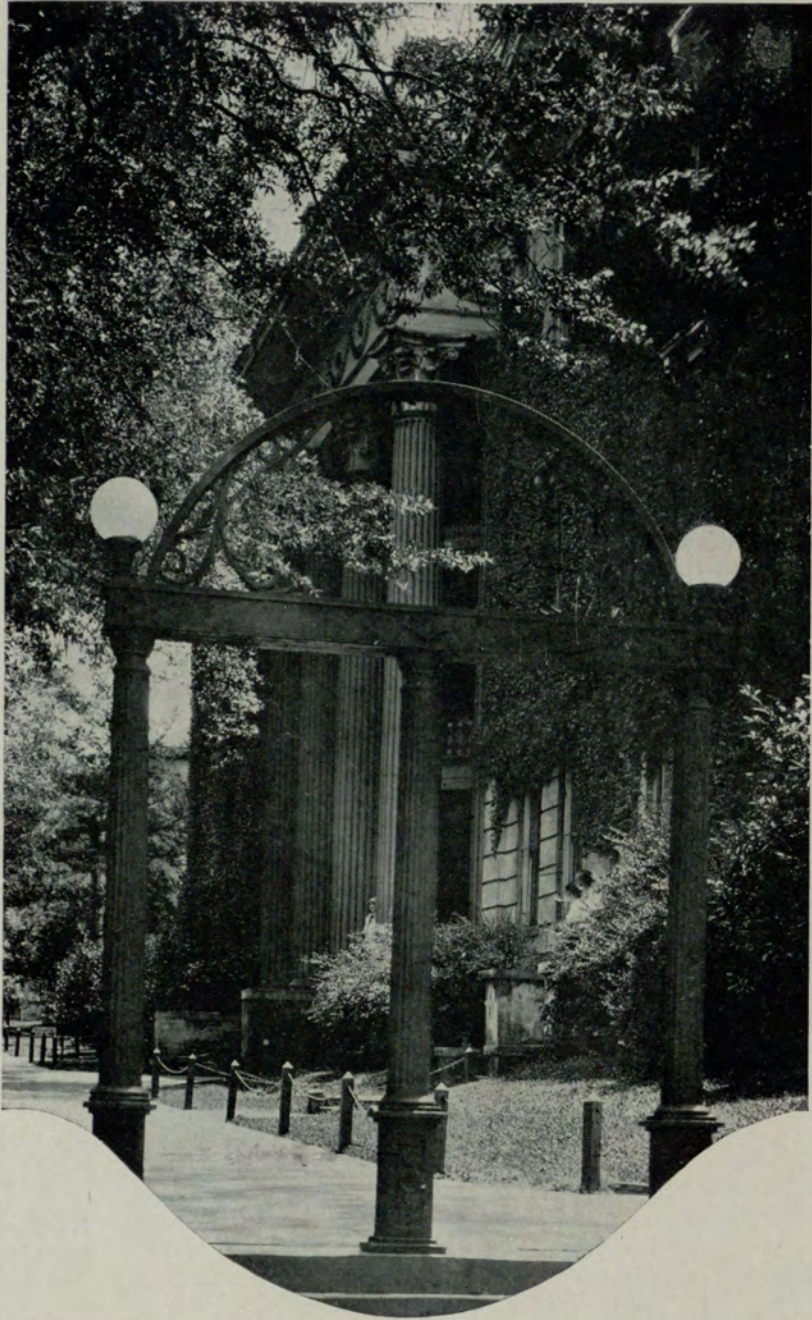
SPECIAL STUDENTS

Allan, Homer Wilson
Baker, James P., Jr.
Barden, Maxie
Bateman, James Richard
Baynard, Jesse Lee
Black, Charles Everett
Bogar, Richard Albert
Burnette, DeWitt Max
Cain, Wilmer
Casey, Herman D, Jr.
Cassels, Robert Q.
Castles, Annie Lee
Christian, Clare
Christian, Mildred
Claxton, Mrs. Marie
Clegg, Cynthia
Cornwell, Emma
Dial, Ralph Pryor
Frankel, Dorothy

Fraser, Frank
Goldstein, Sam
Johnson, George Roberts
Lewis, Joseph Sheppard
McCain, George
McKinney, William Wingo
Mahoney, Don Hopkins
Miller, Harold
Murillo, Ignacio R.
Norman, Lavinia
Peacock, Marion
Perrin, Margaret Pope
Redding, James Frank
Rodgers, Roy
Routh, Conrad
Taylor, Boyce Arthur
Wells, Mrs. Woodward
Whit, Rebecca
Wright, William H.



T H E S U R V E Y



T H E S U R V E Y

STUDENT GOVERNMENT

OFFICERS

MARGARET EWING
President



JOE ALEXANDER
Vice-President



ANDREW SPARKS
Treasurer



ELEANOR MORRIS
Secretary

T H E S U R V E Y

INTER-FRATERNITY COUNCIL

OFFICERS



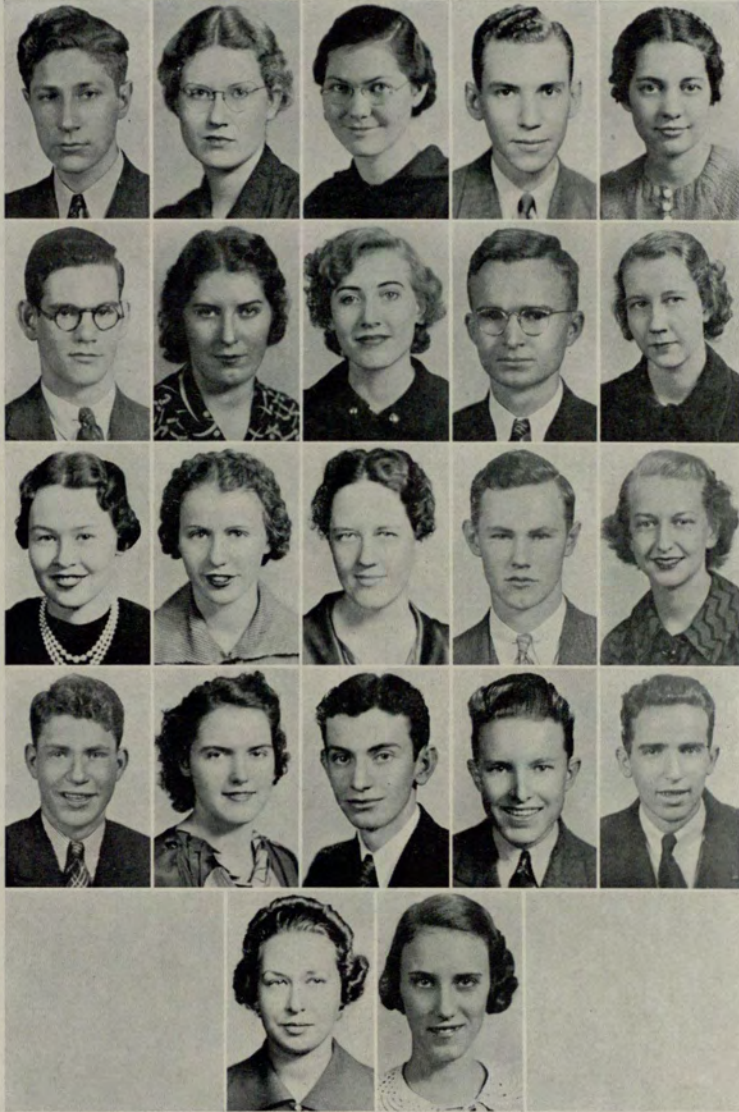
EDNER POWER
President



LOUISE KING
Secretary

T H E S U R V E Y

INTER-FRATERNITY COUNCIL MEMBERS



ALEXANDER	ALLING	BAKER	BATEMAN	BLACKWELL
BROWN	CASTLES	CHAMBERS	EIDSON	EVERETTE
EWING	HAMMACK	JACKSON	McRIMMON	MORRIS
PARKER	RICE	SPARKS	WALKER	WATKINS
	WILLOUGHBY	WINGO		

T H E S U R V E Y

CELEBRITIES

EWING
Miss Jr. College



STERRETT
Mr. Jr. College



JACKSON
Most Representative



ALEXANDER



CHAMBERS
Most Intellectual



WALKER



PIERCE
Most Attractive



BAXTER
Most Handsome

T H E S U R V E Y

CELEBRITIES

WILLOUGHBY

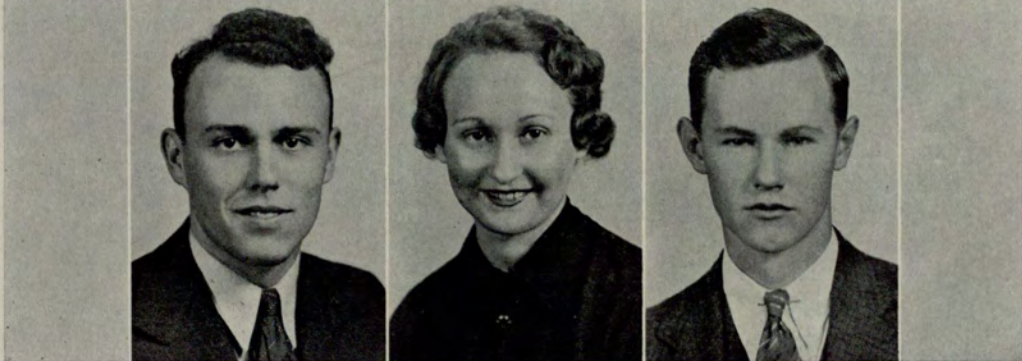
Best Sports

BROWN

MORRIS

Most Popular

EIDSON



BAKER

Biggest Ladies Man

POWER

McRIMMON

Cutest

T H E S U R V E Y

SIGMA PI ALPHA FRATERNITY



CHAMBERS

GOODMAN



BAKER

HONORARY MEMBERS



DR. MERLE WALKER

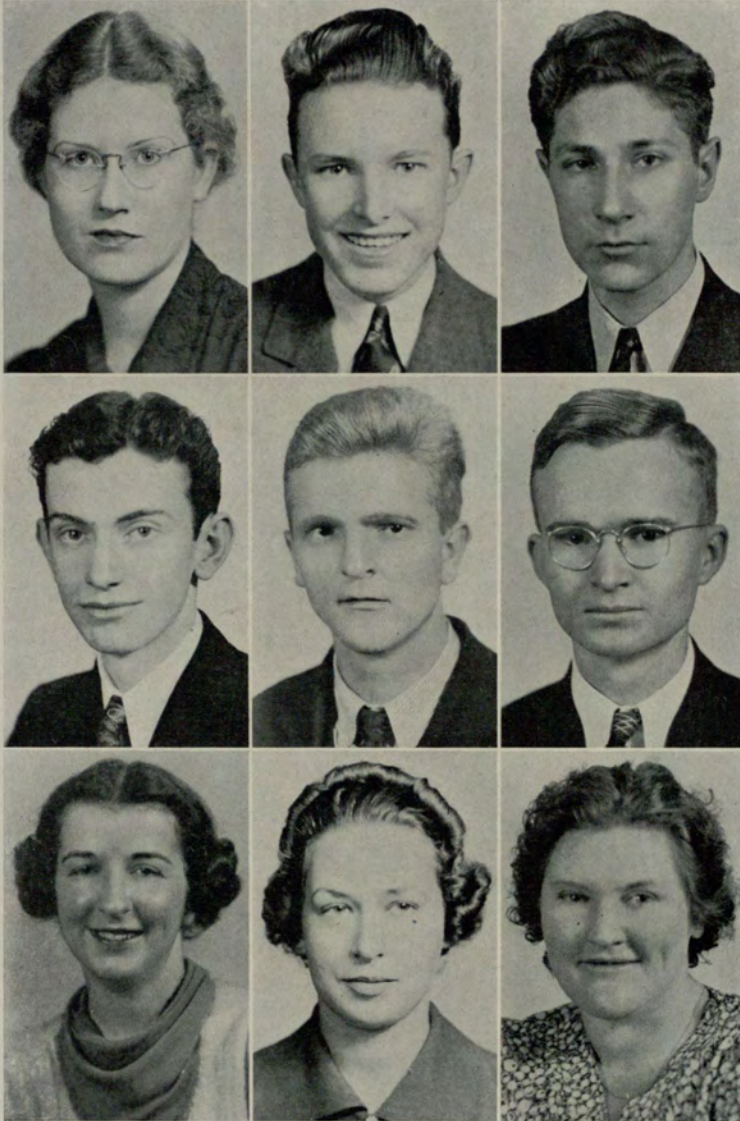
DR. JAMES ROUTH

T H E S U R V E Y

SIGMA PI ALPHA FRATERNITY

OFFICERS

EDWIN WALKER, *President*
WILLATHEA GOODMAN, *Vice-President*
CATHERINE BAKER, *Secretary*



ALLING
SPARKS
BAYNES

WALKER
HAYS
WILLOUGHBY

ALEXANDER
EIDSON
CAIN

T H E S U R V E Y

NEW MEMBERS

SPRING, 1937

RUTH BOYD
BETTY HAYES

SOLOMON GREENBERG
VITTORIA REGHINI

ELIZABETH HAMILTON
ALICE WALLACE

PUBLICATIONS



T H E S U R V E Y

ANNUAL STAFF

CAROLINE JACKSON, *Editor*
JANELLE WILLOUGHBY, *Business Manager*

MEMBERS

JOE ALEXANDER
NEIL McRIMMON
JACK STERRETT

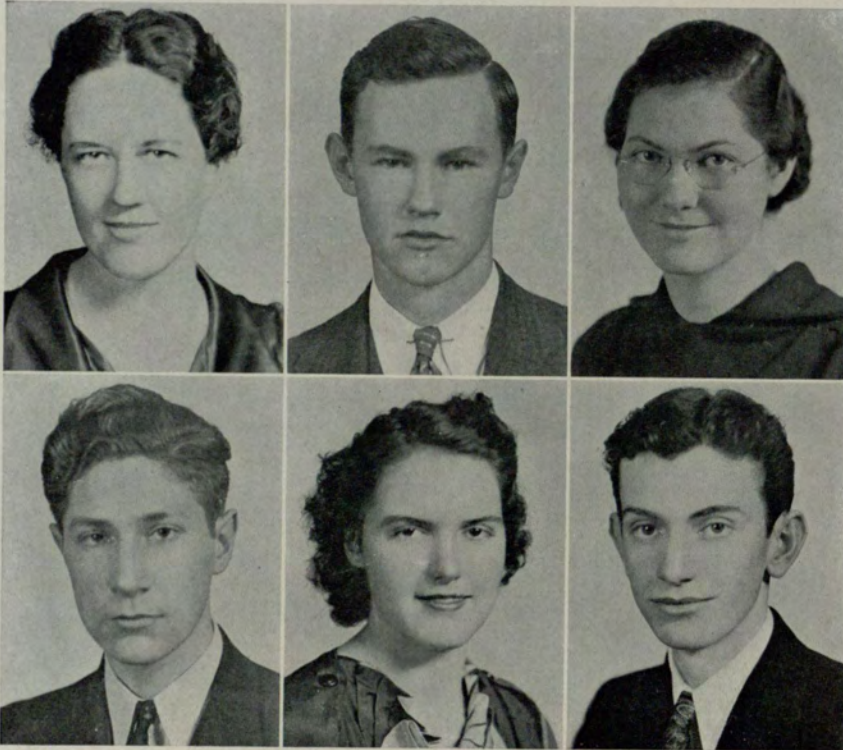
GERALDINE CHAMBERS
MEREDITH RICE
HELEN VENNEY

OSKAR TRASCH
ANDREW SPARKS
EDWIN WALKER

JACKSON

McRIMMON

BAKER



ALEXANDER

RICE

SPARKS

T H E S U R V E Y

ANNUAL STAFF

WILLOUGHBY



STERRETT



VENEY



WALKER



CHAMBERS



FRASCH

JUNIOR COLLEGIATE

THE STAFF

Dean Broome, editor of the Collegiate.

Kay Alling, second in command, feature writer, news gatherer, editorialist. Kay's column "The Question Is" kept 'em guessing as to her identity. Her earnest ambition in journalism has made her a most valuable member of the Collegiate staff.

Tom Eidson, sports writer. His column "Sport Shots" covers a wide field of sports. Tom's intense interest in the school and in sports has done much for the promotion of Junior College athletics.

Also: Joe Alexander, Margaret Ewing, Geraldine Chambers, Sidney Watkins, Janelle Willoughby, Edith Hughey, and Dr. Sparks, faculty adviser.

The Collegiate was revived this year after a lapse in publication which followed its appearance in 1936. After the first issues it improved, by trial and error, in typography and editorial character, and became established in style. It has been circulated in high schools and colleges all over the state and has been widely quoted.

The highest aim of the 1937 Collegiate was the promotion of the Junior College. It has striven to present news in an interesting, clear, and constructive manner, and has been a definite step upward in quality of Junior College publications.



MUSIC *and* DRAMATICS

T H E S U R V E Y

DRAMATIC CLUB

OFFICERS

JOE ALEXANDER, *President*
OSKAR FRASCH, *Vice-President*

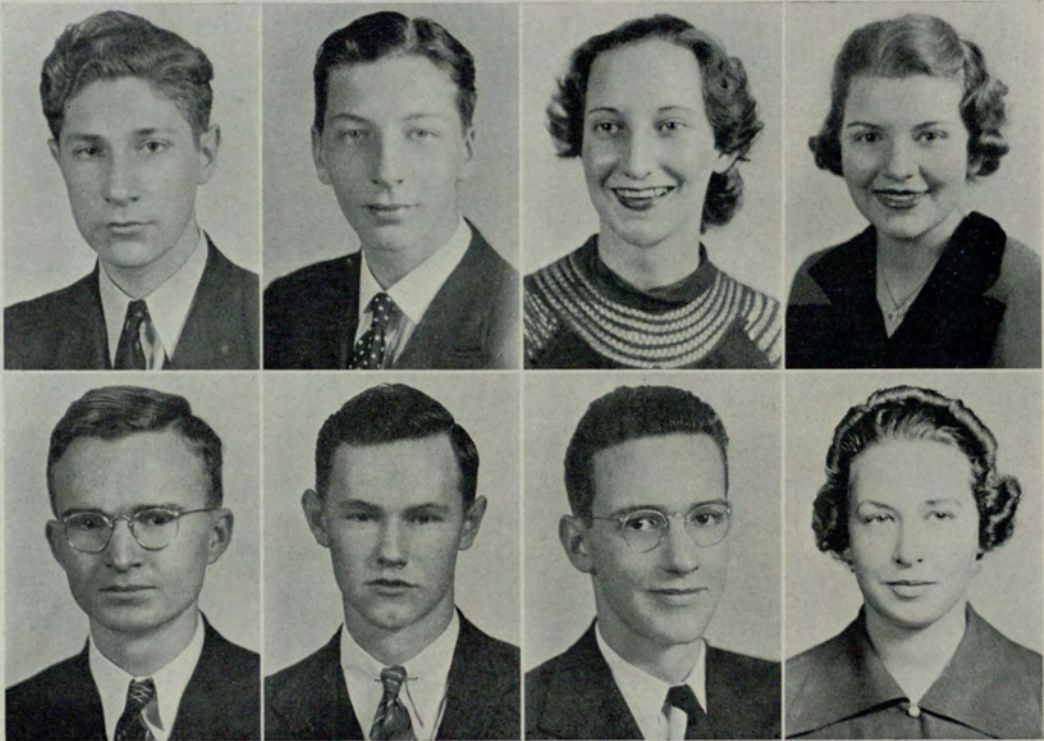
LOUISE KING, *Secretary*
FRANCES KEYES, *Treasurer*

ALEXANDER

FRASCH

KING

KEYES



EIDSON

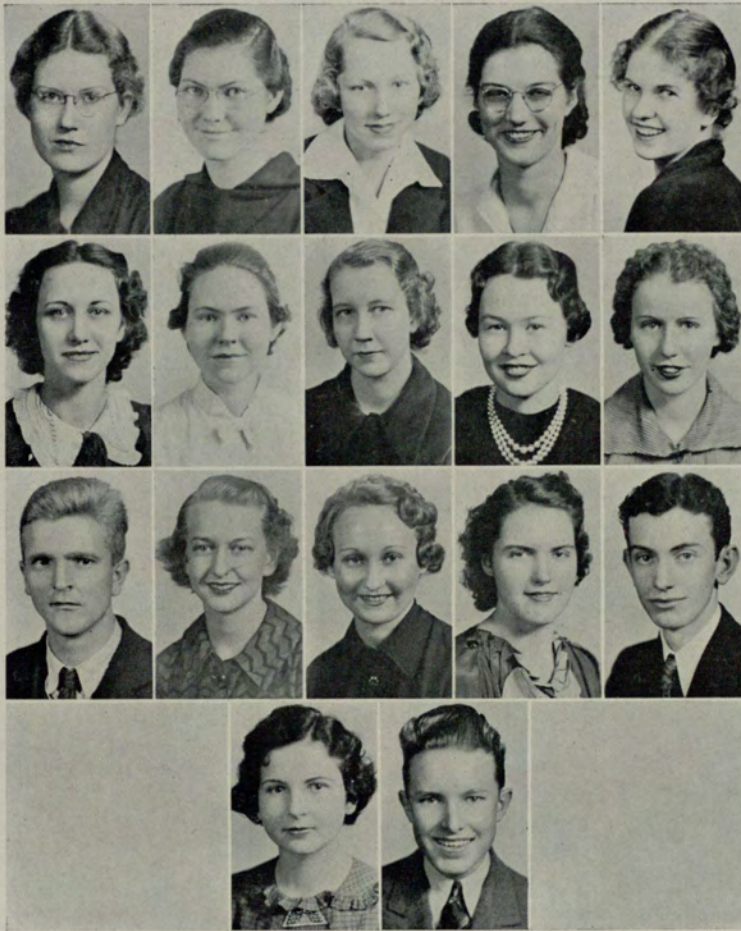
McRIMMON

STERRETT

WILLOUGHBY

T H E S U R V E Y

DRAMATIC CLUB



ALLING
COLLINS
HAYS

BAKER
COMBS
MORRIS

BEHM
EVERETTE
POWER
VENEY

BLAIR
EWING
RICE
WALKER

BOYD
HAMMACK
SPARKS

T H E S U R V E Y

GIRLS GLEE CLUB

OFFICERS

FRANCES KEYES, *President*

SARAH EVERETTE, *Vice-President*

MEMBERS

MARGARET PERRIN
KATHERYN BAYNES
GERALDINE CHAMBERS
MARGARET EWING
WILLATHEA GOODMAN

EDITH GREENE
NETTIE ROSE O'NEAL
MEREDITH RICE
RUTH SANDERS
DOROTHY WHELCHER



KEYES
CHAMBERS
O'NEAL

EVERETTE
EWING
RICE

PERRIN
GOODMAN
SANDERS

BAYNES
GREENE
WHELCHER

T H E S U R V E Y

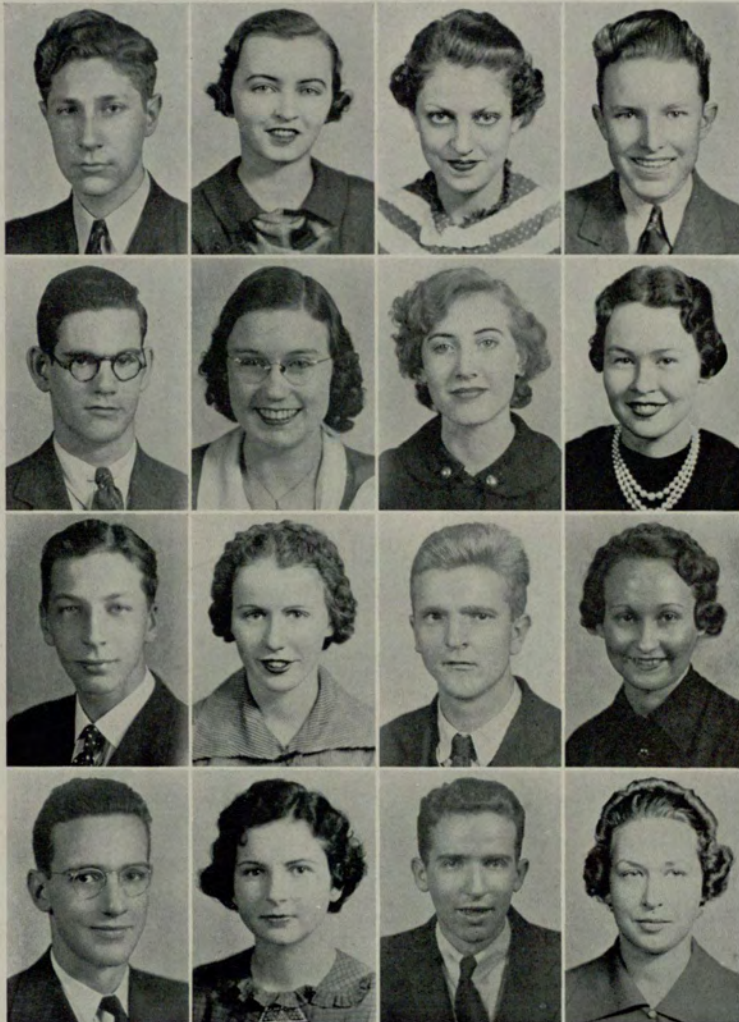
DEBATING CLUB

OFFICERS

JOE ALEXANDER, *President*

DOROTHY FRANKEL, *Secretary*

EDWIN WALKER, *Corresponding Secretary*



ALEXANDER
BROWN
FRASCH
STERRETTE

BLACK
CHAMBERS
HAMMACK
VENEY

FRANKEL
CHAMBERS
HAYS
WATKINS

WALKER
EWING
POWER
WILLOUGHBY

T H E S U R V E Y

CHI RHO SIGMA SORORITY

OFFICERS

LOUISE KING, *President*

ELEANOR MORRIS, *Secretary*

LOUISE HAMMACK, *Vice-President*

EDNA POWER, *Treasurer*



KING
WILLOUGHBY
EWING
PIERCE

HAMMACK
FARMER
HAMILTON
SIMS

MORRIS
BOSWELL
McDONALD
VAUGHAN

POWER
CRAIG
O'BRYAN
ZACHARY

T H E S U R V E Y

DELTA ALPHA DELTA SORORITY

OFFICERS

CAROLINE JACKSON, *President* RUTH BOYD, *Vice-President*
MARGARET BLACKWELL, *Secretary and Treasurer*

MEMBERS

SARAH EVERETTE
RUBY BLAIR

EDITH GREENE
EUGENIA COLLINS
MEREDITH RICE

CATHERINE BAKER
EVELYN COMBS

NEW MEMBERS

MABLE ASKEW
FRANCES GORMAN
LAVINIA NORMAN

GERALDINE CHAMBERS
ALICE WALLACE
MARY GORMAN
WINIFRED WINGO

NANCY CHAMBERS
SARAH GILLILAND
DOROTHY WHELCHER



JACKSON
GREENE

BOYD
BAKER
COMBS

BLACKWELL
BLAIR
RICE

EVERETTE
COLLINS

T H E S U R V E Y

ART CLUB

CATHERINE BAKER, *President*



BAKER
CAIN
MERCK

BACON
COLLINS
SMITH
VENEY

BEAM
GIBSON
TERRELL
WHELCHER

BLACKWELL
GREENE
VAUGHAN
WINGO

T H E S U R V E Y

HOME ECONOMICS CLUB

ANNE LEE CASTLES, *President*

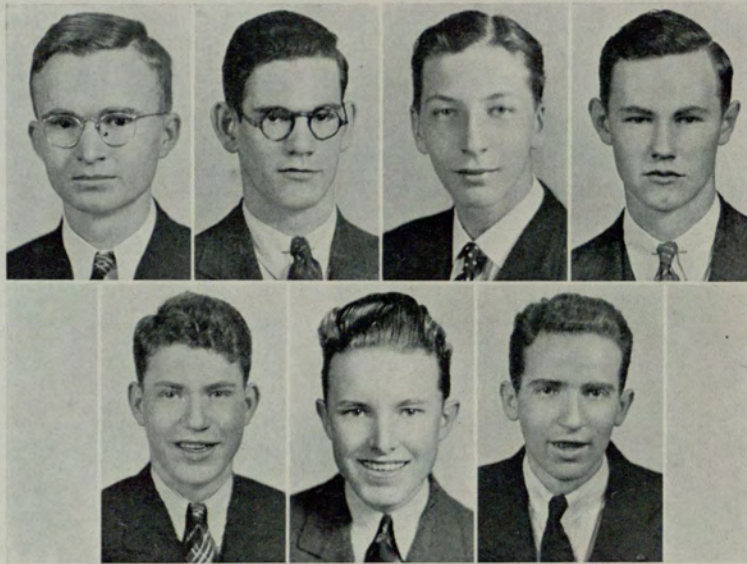


CASTLES	BEHM	BOSWELL	CHAMBERS
COLLINS	COMBS	GOODMAN	
HAMILTON	HAYS	PALMER	TUCKER
VAUGHAN		WINGO	

T H E S U R V E Y

LAMBDA MU CHI FRATERNITY

TOM EIDSON, *President*



EIDSON

BROWN

FRASCH

McRIMMON

PARKER

WALKER

WATKINS

T H E S U R V E Y

ACTIVITIES

The readers of this book have seen pictures of the student organizations in the Atlanta Junior College.

These organizations are classed as Major and Minor Organizations. In the Major, membership is open to the student body. Anyone may join the Debating Club, the Dramatic Club, either of the Glee Clubs, and the Art Club. It does not matter if you cannot act, write, or draw. Join these clubs and learn to do any one or all three.

Membership in the Interfraternity Council is limited to organizations. Each organization with a membership of fewer than ten is allowed one representative on this council, and each organization the membership of which is more than ten is allowed two. These members are elected or appointed according to the by-laws of the organizations.

The Interfraternity Council controls the scheduling of dates for social functions.

Minor organizations are those the membership of which is elective. Included in this category are the sororities and fraternities.

To become a member of the "Sigma Pi Alpha Fraternity", the honor organization, one must have a scholastic average of "B" with this average falling in the upper third division of grades, and must take an active part in extra-curricula activities.

T H E S U R V E Y

Members of other social organizations must fill the requirements set up by individual groups.

The staffs of the Annual and the college paper are made up of students who are serious in their endeavor to edit worthwhile publications.

All organizations are run by and for the students of the Atlanta Junior College.



ADVERTISEMENTS



JUNIOR COLLEGE
UNIVERSITY SYSTEM OF GEORGIA

Offers two-year program in work leading to the degrees:

- Bachelor of Arts
- Bachelor of Science
- Bachelor of Science in Commerce
- Bachelor of Arts in Journalism
- Bachelor of Science in Home Economics
- Bachelor of Science in Education
- Pre-law program

The Junior College Courses are so correlated with those of the Evening College that in the event the Junior College student (day classes) secures a business connection in Atlanta he may immediately transfer to the Evening College without the loss of "even one chapter in the book."

THE JUNIOR COLLEGE
223 Walton Street, N. W., Atlanta, Georgia.

BOARD OF REGENTS

UNIVERSITY SYSTEM OF GEORGIA

Has enlarged Atlanta's educational facilities
for Atlanta graduates

You may enter the Junior College for day classes

or the

Evening College for classes after business hours

UNIVERSITY CENTER

223 Walton Street, N. W., Atlanta, Ga.

50 college faculty members, 1500 students

EVENING COLLEGE
UNIVERSITY SYSTEM OF GEORGIA

Now offers:

Bachelor of Commercial Science Degree

College Certificate in Business Administration

College Certificate in Secretarial Training

Three years accredited work leading to any degree

50 College faculty members, 1500 students from 600 business houses

UNIVERSITY CENTER
223 Walton Street, N. W., Atlanta, Georgia

UNIVERSITY SYSTEM OF GEORGIA
ATLANTA EXTENSION CENTER

STUDENT CREDIT UNION

A convenient way to finance yourself through college.

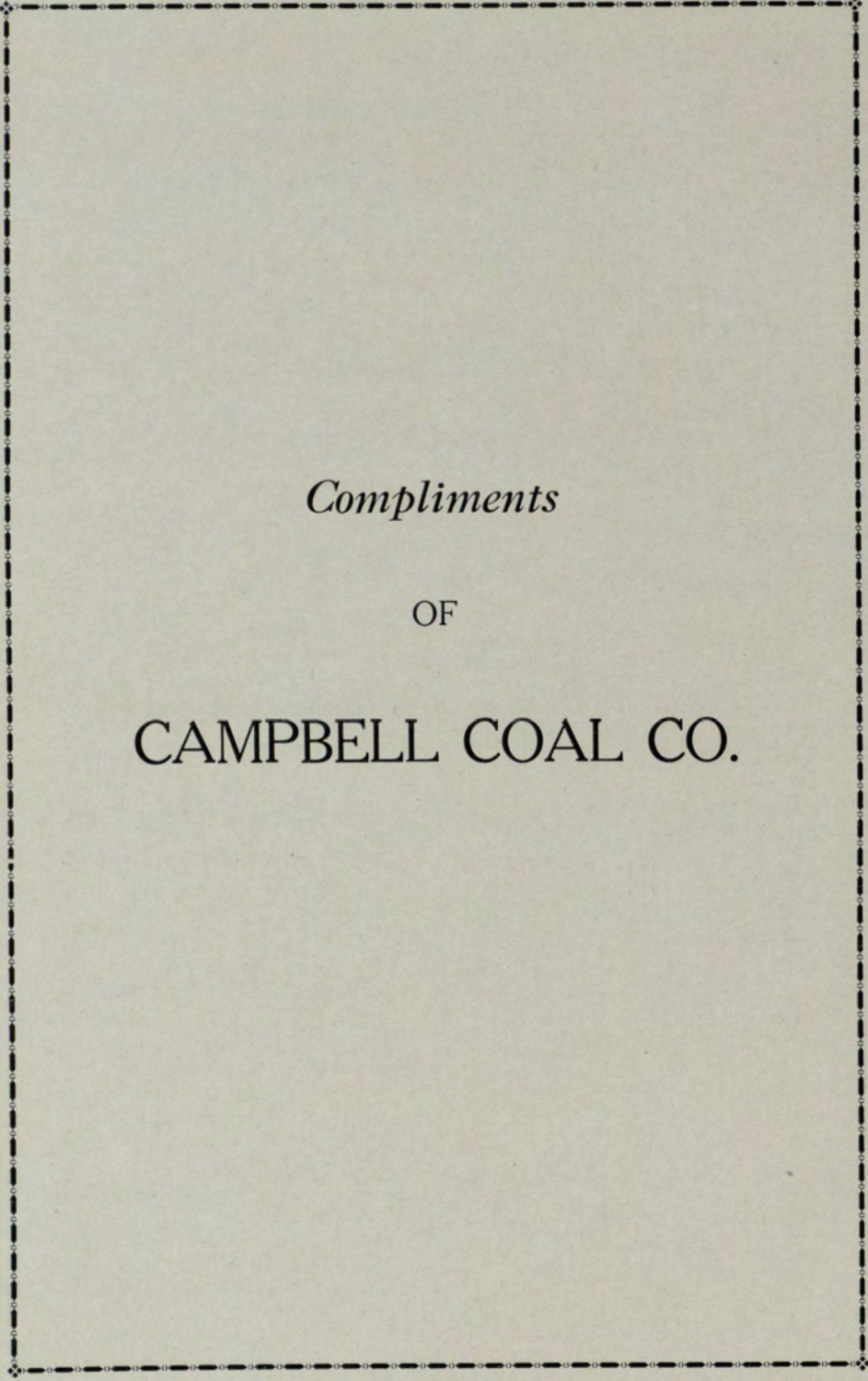
Incorporated for students within the laws of the state of Georgia.

The Student Credit Union has been established to assist those without scholarships and with little money to finance their college training.

The Credit Union advances the money for your tuition and books and allows you to repay them in small monthly payments.

This is the first institution to lead out in this progressive direction.

Atlanta business men and bankers endorse this program for students.



Compliments
OF
CAMPBELL COAL CO.

THE DIVISION OF GENERAL EXTENSION
OF THE
UNIVERSITY SYSTEM OF GEORGIA
ANNOUNCES THE INAUGURATION OF AN
AUDIO-VISUAL AIDS EXTENSION SERVICE
THROUGH WHICH
EDUCATIONAL MOTION PICTURES
MAY BE OBTAINED AT REASONABLE COST FOR USE IN THE
SCHOOLS AND COLLEGES
AND BY LOCAL ORGANIZATIONS THROUGHOUT THE SOUTHEAST

TO MEET the needs of those unable to attend college two types of courses are offered by the Division of General Extension of the University System of Georgia. In one, members of the faculties of the several institutions of the University System of Georgia doing extension work meet groups in their home towns once a week for lectures and discussion. In the other, correspondence courses are offered for those who cannot meet with extension groups in home study.

THE Division of General Extension cooperates with all institutions of the University System of Georgia doing extension work either by correspondence or in extension classes. These institutions offer through the Division of General Extension instruction in a large number of courses by which credit may be earned to meet both degree requirements and professional standards. Several hundred courses are available in more than one hundred subjects in

Agriculture	Journalism
Art	Landscape Gardening
Commerce	Latin
Economics	Mathematics
Education	Music
English	Philosophy
Forestry	Physical Education
French	Political Science
Geography	Psychology
Health	Science
History	Sociology
Home Economics	Spanish

A student may register for correspondence instruction at any time. Extension classes

may be organized anywhere in the state during the school year.

A student may apply through the Division of General Extension for enrollment in the institution of his preference, for any course offered by that institution which he may be qualified to pursue with profit.

SPECIAL plans and terms have been arranged by the Division of General Extension in cooperation with the State Department of Education for validation of curriculum study under local leadership in home communities, and for aiding graduates of high schools who may not be able to attend college, details concerning which may be had upon request.

THE Division of General Extension announces the inauguration of several forms of community service:

1. Community Forums for non-partisan discussion of public affairs
2. Visual Instruction Aids Service
3. Supervised Correspondence Study
4. Reading Courses for Women's Clubs and other local organizations

For information concerning any phase of extension work of any institution of the University System of Georgia, or bulletin, application form, etc., write directly to the institution concerned, or address:

J. C. Wardlaw, Director of General Extension
Room 10, 223 Walton Street, N. W., Atlanta, Georgia
Telephone WALnut 6771

SCHOOLS IN THE UNIVERSITY SYSTEM

UNIVERSITY OF GEORGIA, Athens

HARMAN W. CALDWELL, *President*

GEORGIA SCHOOL OF TECHNOLOGY, Atlanta

MARION L. BRITTAIN, *President*

UNIVERSITY EXTENSION CENTER, Atlanta

GEORGE McINTOSH SPARKS, *Director*

SCHOOL OF MEDICINE, Augusta

G. LOMBARD KELLY, *Dean*

GEORGIA STATE COLLEGE FOR WOMEN, Milledgeville

GUY H. WELLS, *President*

GEORGIA STATE WOMAN'S COLLEGE, Valdosta

FRANK R. READE, *Dean*

SOUTH GEORGIA TEACHER'S COLLEGE, Statesboro

M. S. PITTMAN, *President*

THE ABRAHAM BALDWIN AGRICULTURAL COLLEGE, Tifton

G. H. KING, *President*

NORTH GEORGIA COLLEGE, Dahlonega

J. C. ROGERS, *President*

GEORGIA SOUTHWESTERN COLLEGE, Americus

PEYTON JACOB, *President*

MIDDLE GEORGIA COLLEGE, Cochran

L. H. BROWNING, *President*

SOUTH GEORGIA STATE COLLEGE, Douglas

J. M. THRASH, *President*

WEST GEORGIA COLLEGE, Carrollton

I. S. INGRAM, *President*

UNIVERSITY SYSTEM OF GEORGIA

The state supported institutions of higher learning in Georgia were integrated into the University System of Georgia by legislative enactment at the regular session of the General Assembly in 1931. Under the articles of the Act all existent boards of trustees were established, and control of the System was vested in a board of regents which has all the powers and rights of the former governing boards of the several institutions. Control of the System by the Board of Regents became effective January 1, 1932.

UNIVERSITY SYSTEM OF GEORGIA

STEADMAN VINCENT SANFORD, A.B., LITT.D., LL.D., *Chancellor*
University System of Georgia

CHAS. MERCER SNELLING, A.B., Sc.D., *Chancellor Emeritus*
University System of Georgia

GEORGE McINTOSH SPARKS, A.B., M.A., LL.D., *Director*
University Extension Center

T. M. McCLELLAN, B.S., M.S., *Secretary and Registrar*
University Extension Center

Southern College of Pharmacy

ATLANTA, GEORGIA

In continuous operation for thirty-four years.

Co-educational. Entrance requirement, High School graduation.

Four-year course leading to degree of Bachelor of Science in Pharmacy
(B. S. Phar.)

Fall term begins September 14.

For catalog containing complete information, address

R. C. Hood, Dean

223 Walton Street, N. W.

Atlanta, Georgia

What Makes A University?

Calling a group of buildings a University doesn't make it a University.

A University must have money, men, ideals, and standards. Money for buildings, equipment, and operating expenses. Scholarly men—men whose love of learning is animated by an even greater love of God and man—for a faculty. Ideals of character and conduct which tend to develop the higher and nobler side of the student's nature. Standards of training which insure that its students will receive what a University purports to give: instruction of the quality accepted and approved by the highest accrediting agencies.

You can get but one College education. Be sure that it is one which will stand the test of time.

EMORY UNIVERSITY

ATLANTA

GEORGIA



Pure
refreshment

LEWIS STUDIO

57½ Peachtree Street

Walnut 3656

Official Annual Photographer

Photographs of Distinction

Geo. Muse Clothing Co.

THE STYLE CENTER OF THE SOUTH

Dear Mary:

I certainly want to thank you for my beautiful stationery.

I wonder why more people do not give a girl who is going away to school monogrammed stationery from Stevens. I cannot think of a more acceptable gift. We all have boy friends to whom we want to write, and smart stationery makes a good impression on even the most unobservant male. Then, too, Dad might get letters upon occasion other than when money is needed.

I know it is bad form to read other people's mail, but you may let anyone you like read letters from me, I am that proud of my new monogrammed stationery from Stevens. Thanks a lot.

Sincerely,

Jane

J. P. STEVENS
ENGRAVING COMPANY
103 Peachtree Street
ATLANTA

Flowers for All Occasions

Two Stores to Serve You

The C. A. Dahl Co.

167 Peachtree Street

150 Ponce de Leon

Phones: WALnut 2935-2937

COMPLIMENTS OF

J. N. HIRSCH

Wholesale Candies and Tobaccos

144 Marietta Street, N. W.

JA. 2976-78

MEET YOUR FRIENDS

AT

MINER & CARTER

DRUGGISTS

PHONE WA 4900

Peachtree and Ellis Streets

Atlanta, Ga.

MRS. BURK'S PIES

Lodge & Church Suppers
Our Specialty

427 Atlanta Avenue

1146 Euclid Avenue

MAin 0672

Let Us Frame Your Diplomas

CLASS PICTURES PHOTOGRAPHS

Special Prices to Graduates

BINDER'S

117 Peachtree Street

J. R. MORRIS

Groceries and Feeds

Exclusive Dealer for

TUXEDO FEEDS

309 Peters Street, S. W. MA. 2660

*"The best feed for
every need"*

HAVERTY'S



For 52 Years Atlanta's Leading
Home Furnishers!



*"It's Easy to Pay the
Haverty Way"*

HIGHLAND
Service Station

532 Highland at Cleburne Ave.

FRANK WILLIAMS, *Manager*

JA. 8752

TEXCO PRODUCTS

CAWTHON & HOLLUMS

*South Side Most Complete
Service Station*

Serberling Tires U S L and
Willard Batteries

CAL 9220

Abbot Furniture Co.

207 Marietta St., N. W.

Meet your friends across the
street.

Owen Drug Company

Phone JACKSON 0762
221 Marietta Street

CHAS. R. CAMPBELL
OPTOMETRIST

WATCHES — DIAMONDS
JEWELRY

FINE WATCH REPAIRING

WATCH INSPECTOR
N. C. & ST. L. RWY. ATLANTA, GA.

Compliments of

Lucy Wood Cafeteria

73-75 Walton Street

Mitchell Motors, Inc.

330 Peachtree, N. E.
Wa 5255

OLDSMOBILE

Used Cars

Trailers

The staff wishes to thank one and all for their splendid boosting and cooperation in supporting this the Atlanta Junior College "Survey" for the year of 1937.

Dr. Sparks aided us greatly by securing certain cuts of pictures which saved us a great amount of work and worry.

The publication of this book was also greatly assisted by the merchants of this community through their generous giving of advertisements. Let us patronize them.

DATE DUE

GEORGIANA

GEORGIA STATE UNIVERSITY

3 0785 00576 5946

