

The Signal

GEORGIA STATE UNIVERSITY

JUN 18 1974

LIBRARY

The Newspaper of the South's Progressive Urban University

VOLUME 33

GEORGIA STATE UNIVERSITY, ATLANTA, GEORGIA, JUNE 14, 1974

NUMBER 1



Summer with GSU

GSU's Private Resort: Indian Creek Lodge

Scramble over to the parking decks, throw your unopened books in the back seat and take off for an afternoon in the country-at Georgia State University's Indian Creek Recreation Area.

MARTA exhaust fumes and strips of sidewalk may surround the 44 urban acres of GSU, but they don't invade the pine-scented air and sloping grounds of Indian Creek. The GSU student's tranquil haven is near Clarkston, detached from downtown rush-hour traffic.

About 25 minutes from

Georgia State, you can bask in the late afternoon sun, splash in the pool or curl up under an oak tree with a good book. Bring along your red-checked tablecloth, family, friends, and spread a picnic supper under the cool pines.

Plans for this summer include setting up areas for badminton, volleyball, basketball and winding a jogging course through wooded areas, according to Martha Bullard, director of activities at Indian Creek.

The Indian Creek lodge, edged by a stone patio and built

overlooking an inviting swimming pool, is a two-story wood and granite structure. A driveway curves from the lodge through shaded picnic areas to the swimming pool and bathhouse.

Georgia State faculty, alumni, clubs and organizations may reserve the lodge by contacting Alice Young, director of the GSU Student Center. Containing spacious rooms, a kitchen and fireplace, the rustic building takes on a mountain-cabin atmosphere. The lodge is reserved as often in the winter

as in the summer, said Ms. Young.

Since 1939, GSU students have enjoyed recreational facilities at Indian Creek. When GSU was still Georgia Evening School of Atlanta, the Indian Creek area was part of Durham Park Golf Club. Between 1939 and 1947 about 14.2 acres were pieced together and purchased to form an outdoor recreation area for GSU.

For students, faculty and staff with ID cards, the swimming pool admission is 25 cents. A season ticket may be purchased

for \$35. The regular admission for alumni is 50 cents and \$45 for a season ticket. The pool is open Mondays 12 to 7 p.m., Tuesdays through Saturdays 10 a.m. to 7 p.m. and Sundays 12 to 6 p.m..

The Indian Creek Recreation Area is located off S. Indian Creek Drive, less than two miles from the intersection of N. Decatur Road and Memorial Drive in Clarkston. Contact Ms. Young at the Student Center for a map or call the Recreation Department.

Athletic Diversions

A dreary weather forecast dampens your swimming and tennis-playing spirits. It's Friday afternoon and you've spent this week's and next month's pay check. What's left for a Georgia State University student to do? Plenty.

Sunny skies and riches aren't prerequisites for swimming a brisk lap around the indoor pool or for knocking off a game of handball or a few sets of tennis in the GSU Physical Education complex. Facilities for physical education, intercollegiate and intramural athletics are available for GSU students with ID cards.

Too clumsy to hit a tennis ball? No problem. Free swimming and tennis lessons will be offered for GSU students this summer. And if you dread lugging a wadded up towel and swimsuit downtown, rent a towel for a diem and a swimsuit for 15 cents from the Recreation Department.

Lockers and towels are \$3 per quarter.

The two-building complex, located on the corner of Decatur Street and Piedmont Avenue across from the Student Center, is less than two years old. The corner building contains a swimming pool, diving well and lockers.

Between the structures are four new one-wall handball courts used for playing handball, paddle ball, racquet ball, volleyball and practice tennis. A sundeck area is adjacent to the handball courts.

To try out the tennis court, located on the fourth floor of the west wing, reservations are necessary. The four-story west wing also houses the gym, wrestling room, a dance studio, badminton courts and the weight room.

Drop by the Athletic Department for summer quarter schedules of pool and gym hours.

Outdoor Recreation Programs

Backpacking Nancy Drew 658-3440
day hikes: Amicolola Falls (N. Ga.)
Woodys Gap to Neels Gap (N. Ga.)

Little River Canyon (central Ala.)

overnight hikes: Shining Rock Wilderness (N.C.)
Bartram Trail (N. Ga.)
Jacks River (N. Ga.)

Bicycling
day trips: Washington County (S. Ga.)
Monticello, Ga. (S. Ga.)
Lake Lanier

Weekend trips: Jekyll Island
Savannah

Mountain climbing Bob Kelley 875-8944

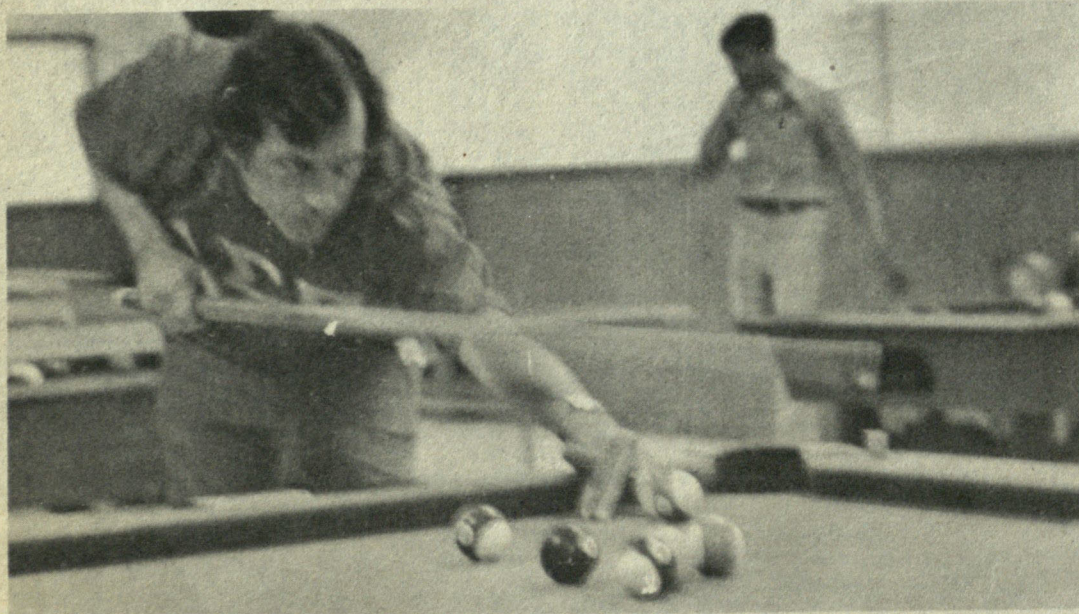
Sailing Martha Bullard 658-3440
one trip a month at Lake Lanier

Scuba Diving Bob Jackson 658-3444

White Water canoeing and rafting Frank Jernigan 658-3440
canoe trip: July 13 on the Chattooga River
raft trip: June 29 on the Chattooga River
August 19-23 - New and Obed Rivers in W. Va.

raft, canoe and kayak trip on the Nantahala River - July 27-28.

Check the Touch the Earth bulletin board (second floor PE building) for additional information.



*Recreation Room Offers
Opportunity To Improve
One's Skill at Table
Tennis or Billiards*



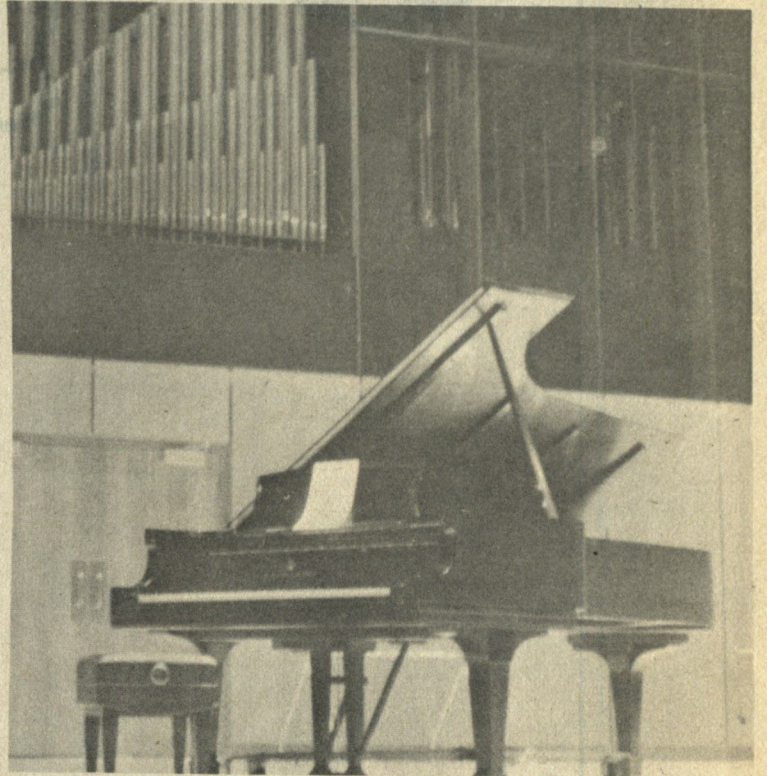
GSU Entertainment

With the coming of summer, activities in the Georgia State University art gallery have slowed down, but two showings are scheduled.

On June 7-28, there will be a GSU faculty show with a

student show July 21-31. The gallery will be closed the entire month of August.

The gallery is located on the first floor of the Art and Music Building at the corner of Gilmer and Ivy Streets.



And Relaxation

Two student recitals will be presented by the Music Department during the summer quarter.

On Saturday, June 15, there will be a joint senior voice recital with Don Wilson and Donna Cowart.

Monday, July 1, pianist Susan

Embry will perform with a string ensemble.

In addition, two faculty concerts will be presented with dates to be decided later.

All performances, free to the public, will be in the Recital Hall of the Art and Music Building. Performances begin at 8:15 p.m.



Relaxation comes easier for some students when they study.

If you have grown weary of wandering around campus looking for something to do during your spare time, or if you find it virtually impossible trying to study on a MARTA bus as it goes bouncing its way down the street, you can take heart. Georgia State University does offer places to spend spare time or study other than the plaza or refectory.

While waiting for that next class to start, you might try the student lounge in the Student Center. There you can relax and watch color television. Or, if you are among the musically inclined, you might play the piano. Also, it's a good place to meet with friends.

For studying, you might try the General Classroom Building. Lounges open to all

students are located on the third, fourth, sixth and seventh floors. The ninth floor is reserved for graduate students and the tenth for faculty members. All lounges have carpeting and furniture.

If a conference isn't in session, you could go to the lounge on the second floor of the Urban Life Conference Center. The building is usually quiet, enabling you to sit and study or simply enjoy the piped in "soft" music.

Still another lounge, of sorts, is the entrance to Sparks Hall from the plaza. Although it is a much-used passageway during certain times of the day, studying is possible.

If you still aren't pleased, you could resort to wandering around campus.



Georgia State

General Classroom

Dean's Office	Philosophy
Chemistry	Political Science
English	Sociology
Foreign Languages	Speech
History	

Business Administration

Dean's Office
Accounting
Information Systems
Real Estate

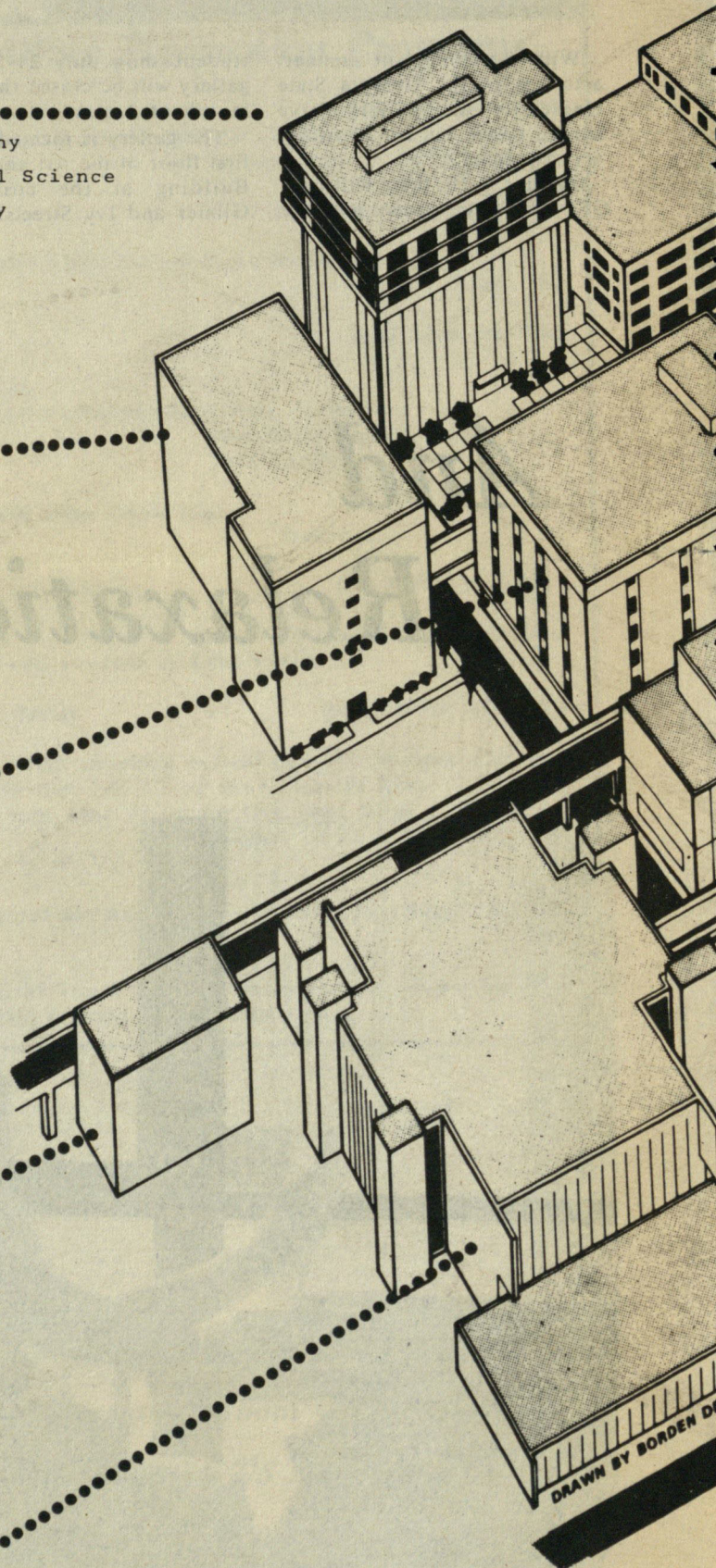
Library

Courtland Building

Military Science
Maintenance & Receiving

Physical Education

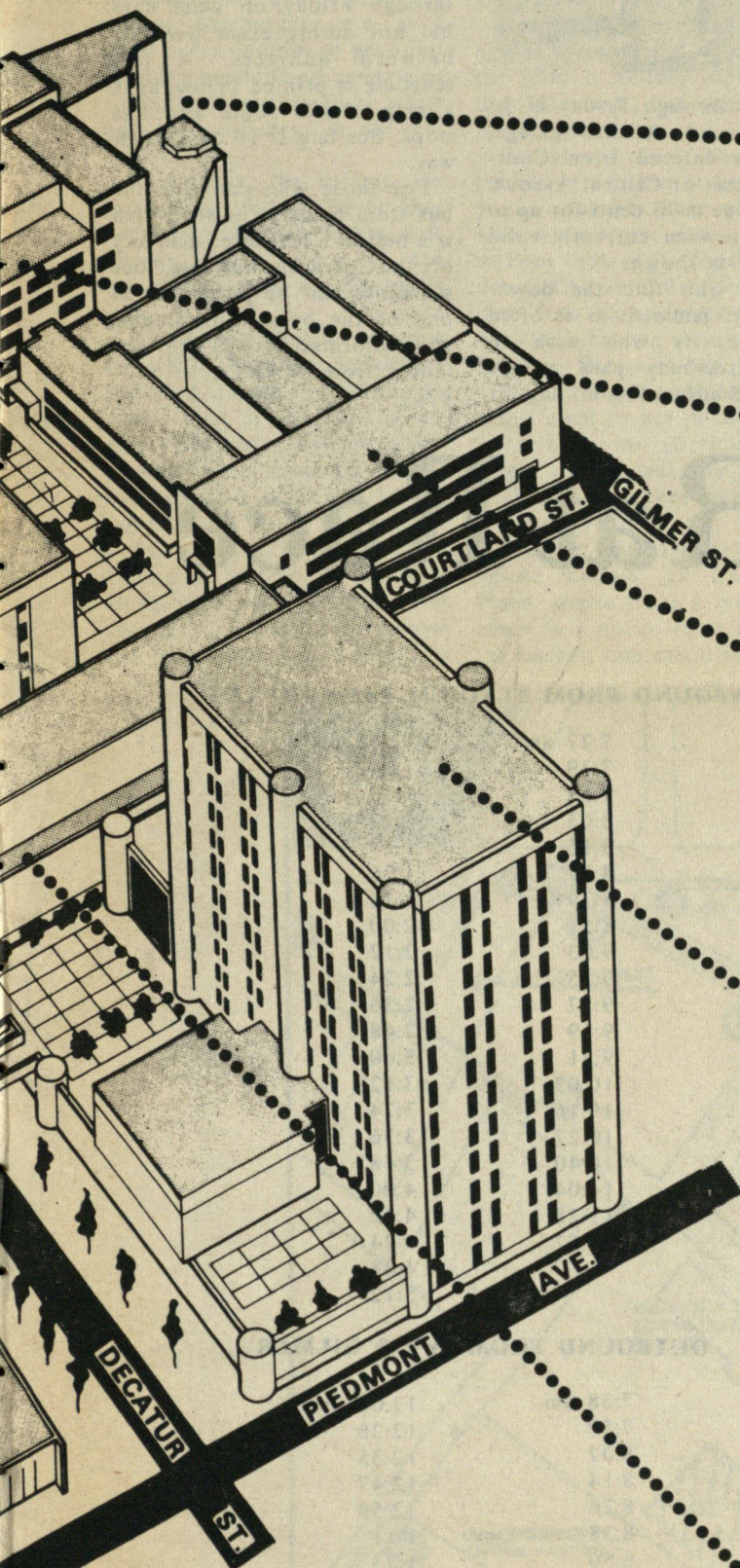
Health
Physical Education
Recreation
Safety



DRAWN BY BORDEN D.



State University



Art and Music

Art
Music
Music Library
Recital Hall
Art Gallery

Kell Hall

Respiratory Therapy	Biology
Refectory	Geology
Post Office	Physics
ID Validation	Psychology
Physical Therapy	Medical Technology

Sparks Hall

Special Studies	Student Accounts
General Administration	Dean's Office
President	Hotel/Motel Administration
Vice-President	Registrar

Urban Life

Pediatric's Assistants	Allied Health Sciences
Auditorium	Dean's Office
Conference Center	Community Health Nutrition
Buffet Dining Room	Mental Health Assistants
Geography	Nursing
Journalism	
School of Education	

Student Activities

B&D Cafeteria	Placement Office
Bookstore	Game Room
Student TV Lounge	Theater
Signal	Infirmary
WRAS	Dean of Students, Men, Women, & Assistant Deans
Fraternities	SGA Office
Sororities	Chapel

Student parking is available at the university lots operated by Apcoa, at the Central Parking Co. garage between Courtland Street and Central Avenue and in the Atlanta Stadium lot.

Campus parking space is found when you can find it, in the university decks entered from Piedmont Avenue or Butler Street from 6:30 a.m. to 10 p.m. In addition, the F and J lots are opened to students at 4:30 p.m. and the A, C, E and G lots are opened at 6 p.m. (See the map on page 7 for locations.)

Fees are divided into three periods charging 30 cents each for an all-day maximum of 90 cents. The periods are 6:30 a.m. to 1:30 p.m., 1:30 to 4:30 p.m. and 4:30 to 10 p.m. There are grace periods from 1:15 to 1:45 p.m. and from 4:15 to 4:45 p.m. so that students entering or leaving the lots 15 minutes before or after the 1:30 and 4:30 deadlines will not be charged an extra 30 cents. Currently validated GSU ID must be shown at the parking lots.

The decks are closed weekends, but students have access to lots F and J. These lots open not later than 8 a.m. and lot C is opened to faculty and

staff at the same time. The C lot closes about 2 p.m. and F and J lots close between 4 and 6 p.m. Students can always let themselves out of the student lots after hours.

Students must pay the usual parking fees as long as there is an attendant present at the lot. Parking is free when there is no attendant; lots F and J are open at no charge on Sunday.

Lot H is only for university service vehicles and is closed on weekends. Lot G will be closed for the summer.

A fee may be charged to the general public and students during special events at the Municipal Auditorium and other meeting places in the vicinity.

Central Parking Co. offers students a special all-day rate

Monday through Friday at its Underground Atlanta garage, which is entered from Courtland Street or Central Avenue. The charge is 75 cents for up to 24 hours when currently valid GSU ID is shown.

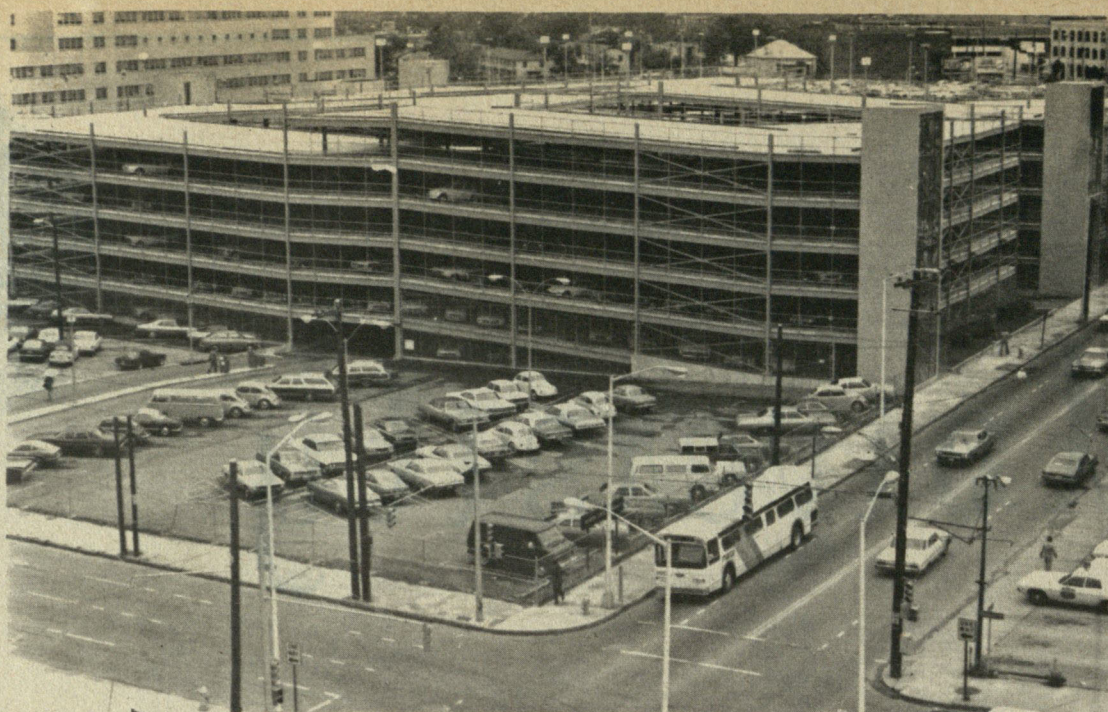
Those who find the downtown lots jammed, as is often the case, or who wish to economize, may park at the Atlanta Stadium lots all day for

25 cents. The lot is open 6:30 a.m. to 5:30 p.m. Monday through Friday every class day but not during exam week or between quarters. There is no security protection at the lot after 5:30 p.m.; in addition, those who park there later may conflict with evening stadium events.

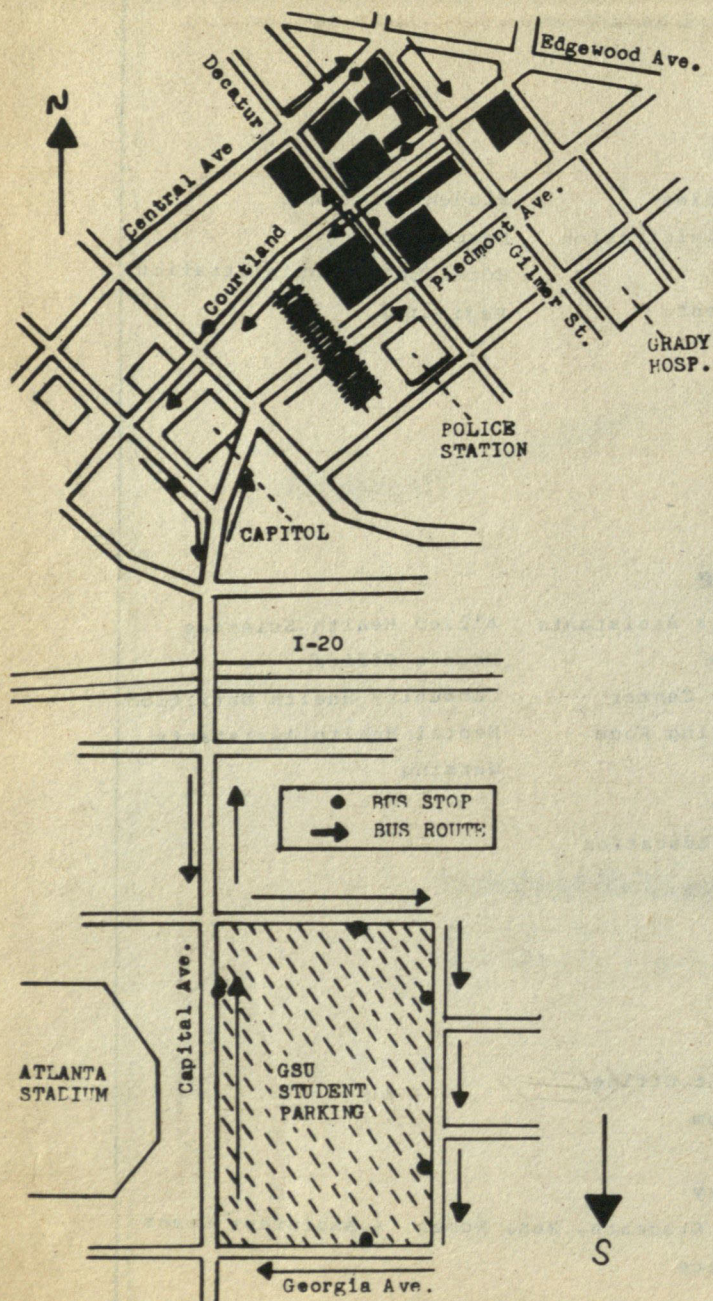
Students may purchase a stadium parking decal each quarter for \$10. This decal does not, however, entitle students to park in any reserved faculty and staff spaces on campus for which GSU decals are required; the stadium and campus lots are two entirely separate operations.

The lot at the stadium can be reached on foot (by the athletic) or by GSU shuttle buses, which run every 12 minutes or so from 7:27 a.m. to 5:23 p.m. Monday through Friday on class days but not during exam week or between quarters. A bus schedule is printed below, as is a map of the route and bus stops. Bus fare is 10 cents each way.

For those who can ride the bus from home to town, which is a hell of a lot easier than any of this parking business, bus schedules can be picked up at one of the boxes on campus, and information can be obtained from MARTA at 522-4711.



The Big Parking Rat Race



INBOUND FROM STADIUM PARKING LOT

7:27 am	12:15 pm
7:39	12:47
7:51	1:00
8:03	1:12
8:15	1:24
8:27	1:36
8:39	1:48
8:51	2:00
9:03	2:12
9:15	2:24
9:27	2:36
9:39	2:48
9:51	3:00
10:03	3:12
10:16	3:24
10:27	3:36
10:40	3:48
11:04	4:00
11:28	4:12
11:52	4:24
	4:48
	5:12

OUTBOUND FROM IVY & GILMER

7:38 am	12:03 pm
7:50	12:26
8:02	12:35
8:14	12:47
8:26	12:59
8:38	1:11
8:50	1:23
9:02	1:35
9:14	1:47
9:26	1:59
9:38	2:11
9:50	2:23
10:03	2:35
10:14	2:47
10:27	2:59
10:38	3:11
10:51	3:23
11:15	3:35
11:39	3:47
	3:59
	4:11
	4:23
	4:35
	4:59
	5:23



Meals Around GSU

As long as he has money in his pocket, a student at Georgia State University need never worry about finding somewhere convenient to eat lunch.

One of the most common choices for lunch by GSU students, faculty and staff is the B & D Cafeteria, located on the third floor of the Student Center, where one can order sandwiches, hamburgers, etc. at a short order counter or get a full cafeteria meal. There's plenty of room to sit, and the food, while not extraordinary, is not expensive.

Next door, the hall to the third floor student center connects with the new Urban Life Dining Room, where you can get a good meal for \$3, buffet style.

Across Edgewood Avenue from Hurt Park is the Hartford Building. Inside the Hartford's main floor at the rear is the Davis Brothers Cafeteria, where another good meal for a not-too-expensive price can be obtained.

The Brackett House Cafeteria, located in the Hurt Building across Ivy Street from Georgia State and right across the hall from C & S Bank, is

another alternative to eating lunch at the B & D.

At the Brackett House, one can get a good stable meal at prices comparable to, if not lower than, that served at the B & D. It doesn't hold as many people as does the B & D or Davis Bros., but it serves lunch until 2:30 p.m. and there is generally no line after 1:30.

Drawbacks are that the service is sometimes slow and that the food is neither piping hot nor lukewarm, but somewhere in between.

But if you don't have slow service in a cafeteria line, then you'll probably have someone who doesn't give you a chance to even look at the food before demanding an order. So taking that into consideration, one can't say that the service in the Brackett House is bad.

If you're not in the mood for a full meal or are in too much of a hurry to sit down and linger or just feel like a sandwich, there are even more alternatives for lunch.

There's "Sandwich Alley," better known as Exchange Place, where from a mere pittance to a not-so-large drop in the bucket, one can dine at the

likes of Stan's Sandwich Shop, the Skillet Restaurant, Blimpies, and soon McDonald's.

All are fairly quick, with the exception of Stan's, where the service is sometimes poor and usually slow; but it is open all afternoon and is the most convenient to GSU (just across Ivy from Kell Hall).

On Decatur Street, on the opposite side of the block, you can take a ride on Ollie's trolley, another super-hamburger stand. Just down the street from Ollie's, going toward Five Points, is a superb sandwich shop known as Harold's.

Although Harold's is crowded at lunch time and closes at 2 p.m., the line moves quickly, and the sandwiches are

good and not too highly priced.

Then there's Underground Atlanta, located up Central Avenue from Georgia State. You just go down the entrance steps and you can be treated to everything from sandwiches to chicken to pizza to expensive meals, depending on your hunger, your time and your coin purse.

To wash down those delights, you will find available, at a modest price, of course, just about anything you can think of to drink, except the staples of wines, Sterno, lighter fluid and Polly Peachtree.

Places like the Steak Place, Grandma's Biscuits and the Bucket Shop serve good food quickly and with a smile. The

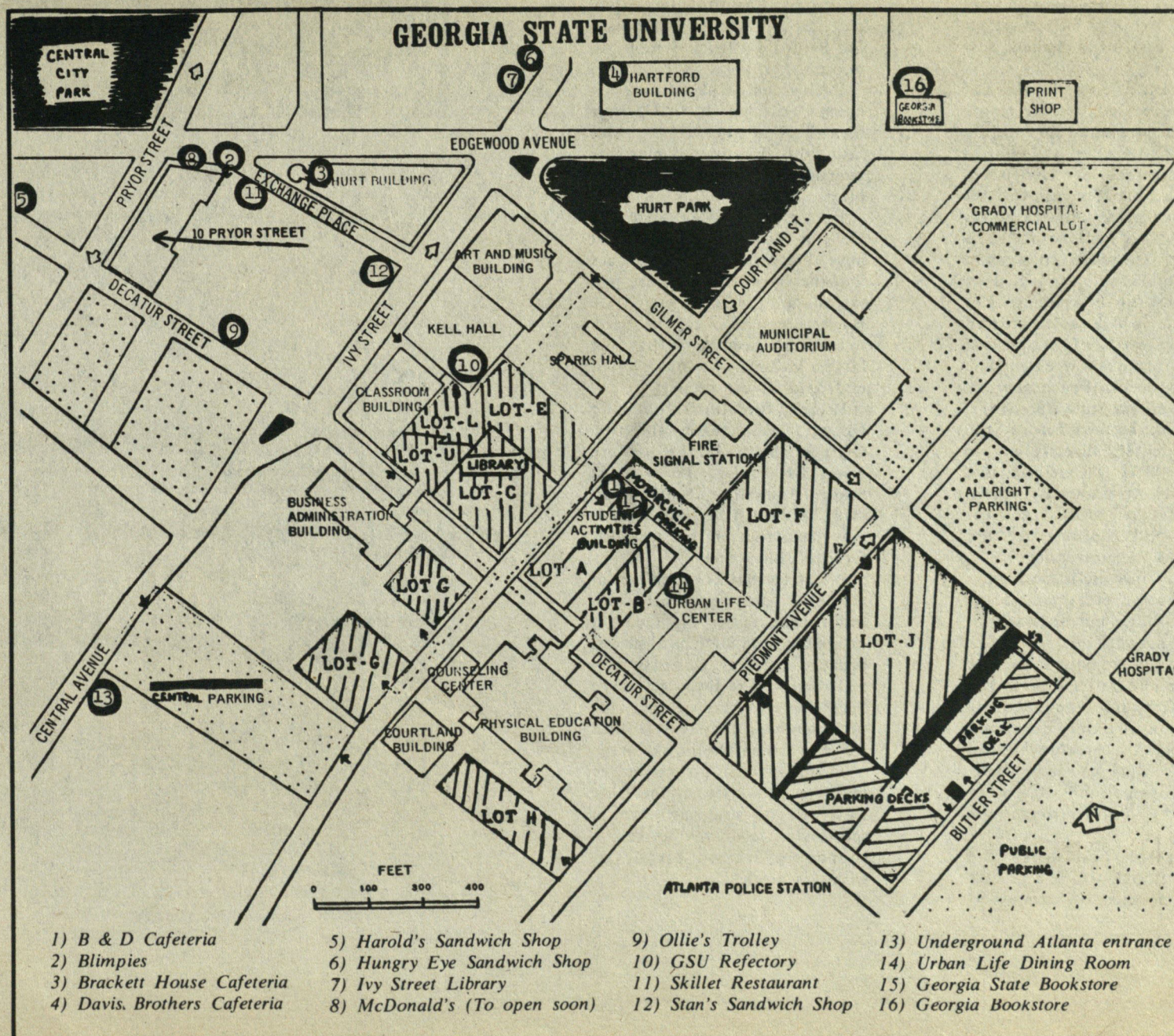
Hurt Park Provides an Excellent And Convenient Place for Eating Snacks and Meals

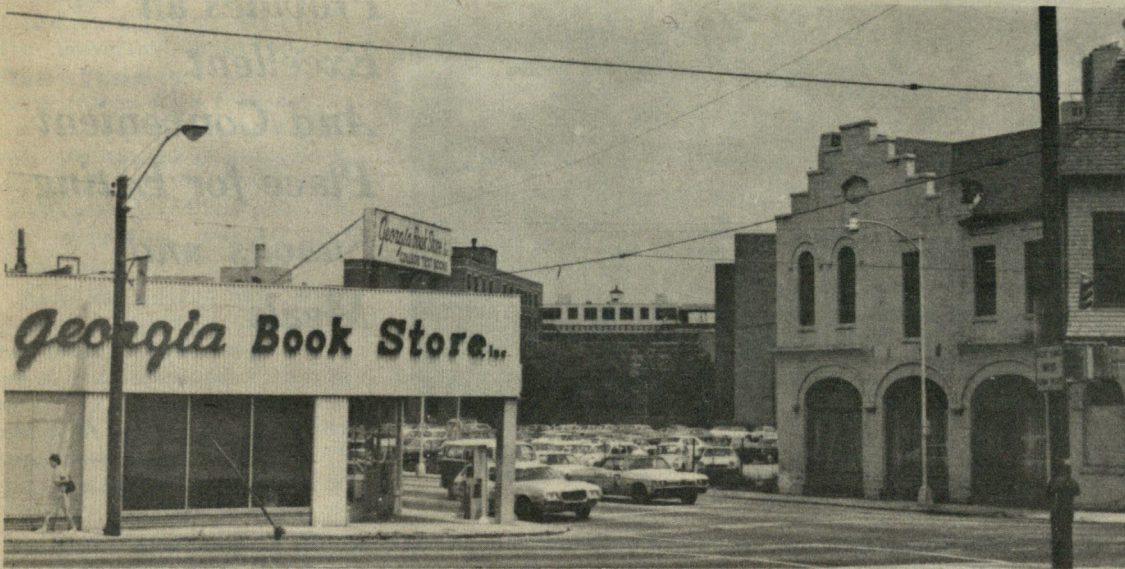


whole atmosphere of Underground is much lighter as well. Most of Underground is open until 2 a.m.

Above ground, about a half block up Ivy from GSU, is the Ivy Street Library, a gathering place for many students at Georgia State where good food, drinks and conversation are served. At lunch time, however, the office workers from the area invade and the line sometimes stretches to the sidewalk.

A few more steps up Ivy is the Hungry Eye Sandwich Shop, and around the corner to the left is the Pewter Mug, where for around \$3 and up you can generally get more than you can eat.





Georgia Bookstore commercially owned is located within one block of the University Campus.

Books Sought, Bought, Sold At 3 Locations Near GSU

There are three places on or near the Georgia State University campus where a student may buy and sell textbooks, only one of which is in business strictly as a non-profit student service.

The Blue Key Book Exchange, located in the game room on the second floor of the gsu Student Center, sells books on consignment for students.

At the Blue Key, students set their own prices for textbooks they wish to have sold. When sold, an exchange spokesman said, the student is notified to come pick up his money. The exchange, which sold around \$17,000 worth of books last year, is open exam week and the first two weeks of each quarter.

The Georgia State Bookstore, located on the third floor of the Student Center, directly across from the B & D Cafeteria, is a profit-making university organ, although the profits go for salaries and the rest are fed back into the university.

It not only sells and buys textbooks for every course offered at GSU, but sells school supplies as well.

Used texts are bought back by them for one-half the price last sold. Although the Georgia State Bookstore only buys back books during a three-day period sometime during exam week, they are open from 8:30 a.m. to 7:45 p.m. daily through the quarter.

The third bookstore, the Georgia Bookstore, is a private business located off campus at

the corner of Edgewood Avenue and Courtland Street north of Hurt Park and the Municipal Auditorium, open daily from 9 a.m. to 6 p.m. and on Saturdays from 9 a.m. to noon.

It also deals with all texts for courses carried at GSU, buys them back at one-half the price last sold any time during the quarter, and carries school supplies.

If the Blue Key and the Georgia State Bookstore do not have a certain text, chances are that the Georgia Bookstore will (although the Georgia State Bookstore will place the book on order) because it has the largest volume of books carried and sold of the three.

Prices for books at the Georgia Bookstore and the Georgia State Bookstore are generally similar, the Georgia State Bookstore spokesman said, "although he added there may be a five or ten cent difference either way.

Prices for books purchased at the Blue Key generally run lower than either the Georgia or the Georgia State bookstores, because although students who sell their books there get more back than at either of the other two, they won't try to sell them for more than the bookstores.

There is also no guarantee that the books left at the Blue Key will be sold, although a spokesman said that books for courses in demand usually go within a week.

incept

welcomes all new students to
Georgia State University for

summer quarter

Inceptors will conduct tours of the campus for new freshmen and transfer students during the first two weeks of the quarter.

Go to 201 Student Center or call 658-2221 to sign up.

